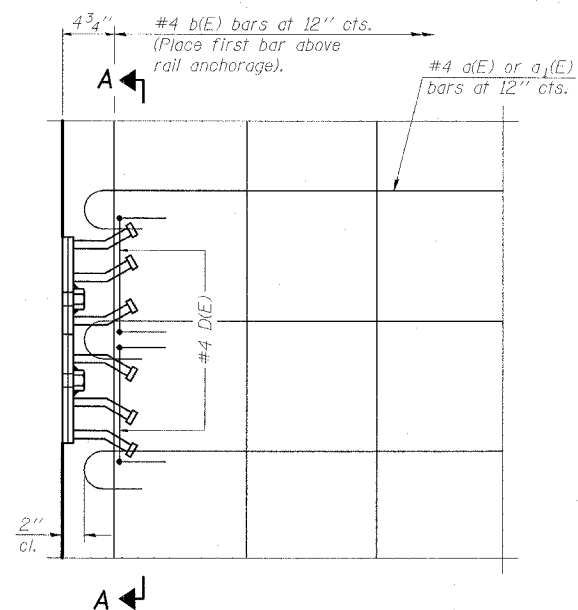


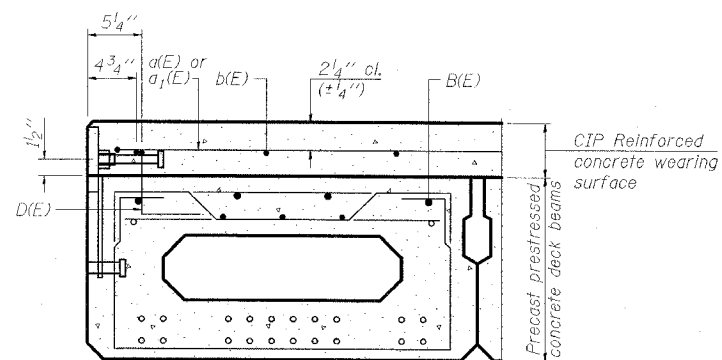
STATE OF ILLINOIS
DEPARTMENT OF TRANSPORTATION

ROUTE NO.	SECTION	COUNTY	STATION	SHEET NO.	SHEET TOTAL
FAS 899	8BR-1	SALINE	75	23	13 SHEETS
FED. ROAD DIST. NO. 7	ILLINOIS	FED. AID PROJECT			

78028

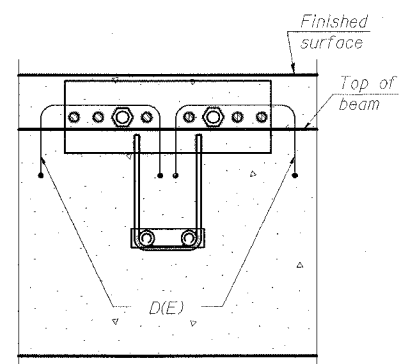


PLAN

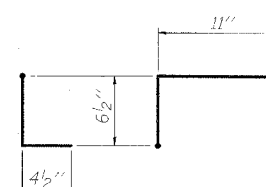


FASCIA BEAM CROSS SECTION

See Typical Section on Dwg. 6 of 13 for strand pattern, dimensions and bar call outs.

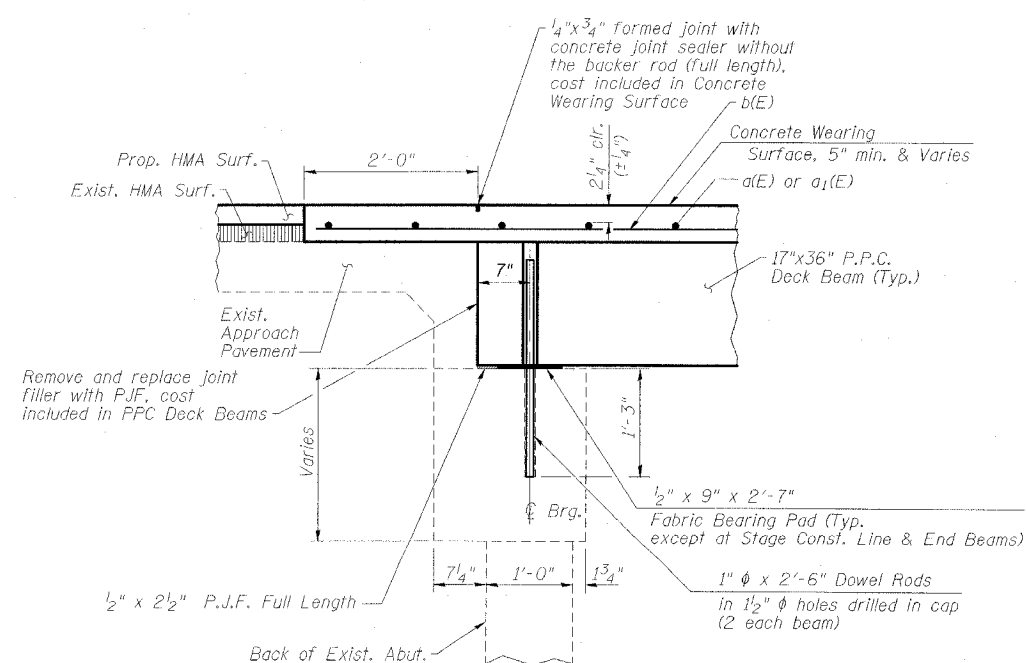


SECTION A-A



BAR D(E)

CONCRETE OVERLAY MODIFICATIONS FOR RAIL ANCHORAGE



SECTION THRU ABUTMENT

(@ Rt. L to skew)

NOTES

After beams have been erected, holes shall be drilled into substructure and dowels rods placed. Dowel holes shall be filled with non-shrink grout to top of beam and allowed to cure min. 24 hrs. prior to grouting the shear keys.

Concrete wearing surface to be poured after grouting the shear keys.

Dowel rods drilled in cap are included in the cost of Precast Prestressed Concrete Deck Beams (17" Depth).

The rail anchorage shall be cast with the beam and the wearing surface shall be cast in the field. Formwork necessary for the wearing surface may be secured utilizing the bottom rail anchorage inserts and/or additional inserts cast into the beam. Drilling into the beam will not be permitted.

ESCA
CONSULTANTS, INC.

DESIGNED BY:	JMS	09/07
DRAWN BY:	CJ/HAS	09/07
CHECKED BY:	DAJ/ELH	01/08
APPROVED BY:	RDP	01/08

SUPERSTRUCTURE DETAILS
OLD IL 13 OVER POSSUM TAIL BRANCH
FAS ROUTE 899 - SECTION 8BR-1
SALINE COUNTY
STATION 664+15.00
STRUCTURE NO. 083-0035