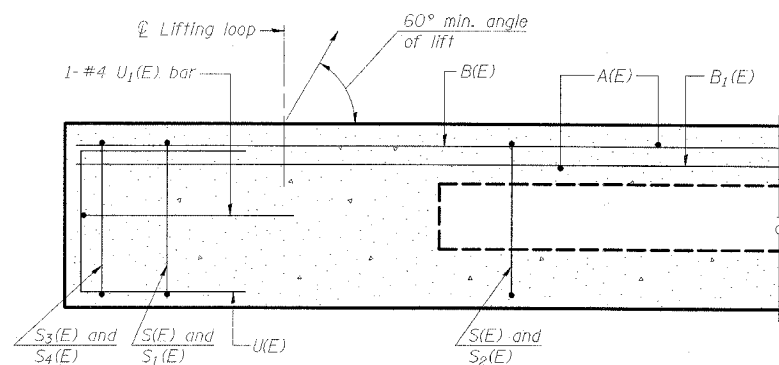


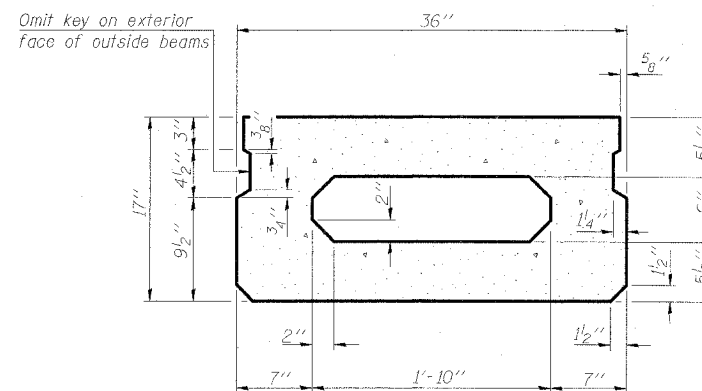
STATE OF ILLINOIS
DEPARTMENT OF TRANSPORTATION

ROUTE NO.	SECTION	COUNTY	STATION	SHEET NO.	SHEET NO. 6 13 SHEETS
FAS 899	BBR-1	SALINE	75	21	
FED. ROAD DIST. NO. 4	ILLINOIS	FED. AID PROJECT-			

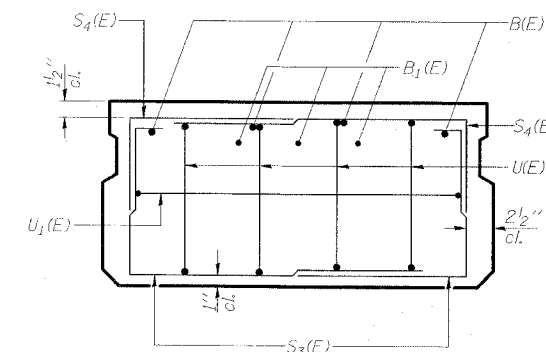
78028



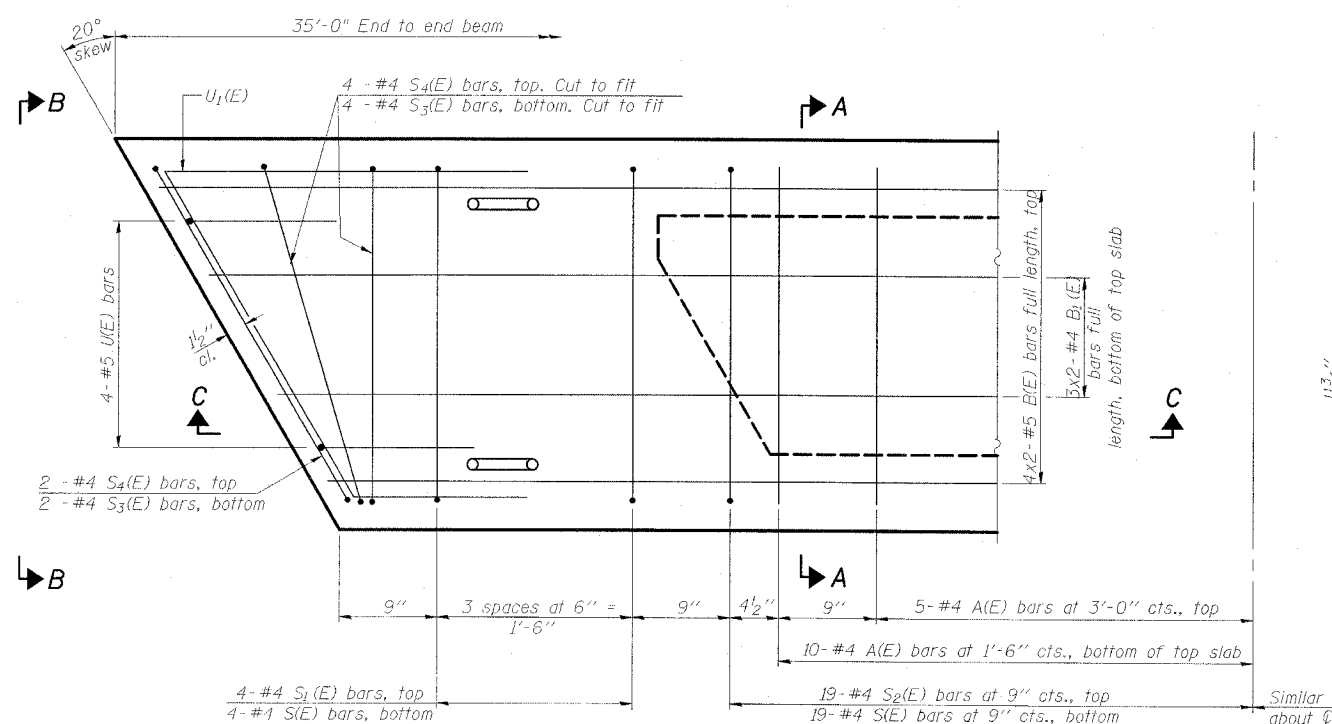
SECTION C-C



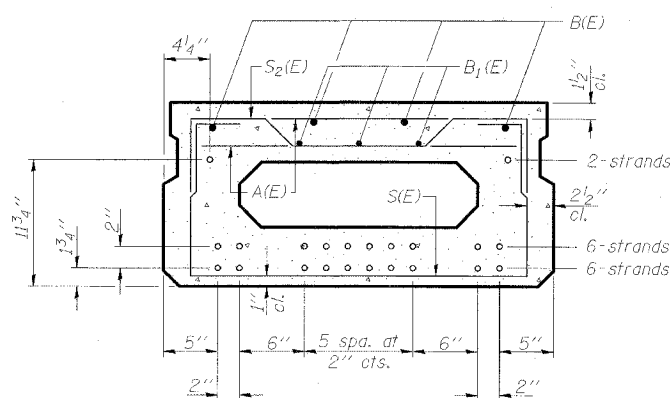
SECTION A-A
(Showing dimensions)



VIEW B-B



PLAN VIEW



SECTION A-A
(Showing reinforcement and permissible strand locations)

14 - 1/2" strands, each strand stressed to 30,900 lbs.
Note: Place the number of strands specified in each row symmetrically about the centerline of beam in the permissible strand locations shown.

BAR LIST
ONE BEAM ONLY
(For information only)

Bar	No.	Size	Length	Shape
A(E)	30	#4	2'-7"	—
B(E)	8	#5	19'-7"	—
B1(E)	6	#4	19'-1"	—
S(E)	46	#4	5'-9"	U
S1(E)	8	#4	4'-11"	U
S2(E)	38	#4	5'-2"	U
S3(E)	6	#4	4'-4"	U
S4(E)	6	#4	3'-11"	U
U(E)	8	#5	3'-8"	U
U1(E)	2	#4	6'-1"	U

Note: See Sheet No. 7 of 13 for additional details and Bill of Material

MIN. BAR LAP
#5 bar = 2'-2"

- Notes:
1. Spacing of S1(E) and S2(E) bars may be adjusted up to 4" in the immediate area of the transverse tie diaphragms to miss the block outs for the transverse ties.
 2. Adjust reinforcement locations to clear dowel holes at fixed ends.

ESCA
CONSULTANTS, INC.

DESIGNED BY:	JMS	09/07
DRAWN BY:	CJ	09/07
CHECKED BY:	DAJ/ELH	01/08
APPROVED BY:	RDP	01/08

SUPERSTRUCTURE DETAILS
OLD IL 13 OVER POSSUM TAIL BRANCH
FAS ROUTE 899 - SECTION 8BR-1
SALINE COUNTY
STATION 664+15.00
STRUCTURE NO. 083-0035