

F.A.I. RTE.	SECTION	COUNTY	TOTAL SHEETS	SHEET NO.
270	DIST 8 ITS 2009-2	MADISON	24	1
FED. ROAD DIST. NO. -		ILLINOIS	CONTRACT NO. 76B54	

**INDEX OF SHEETS**

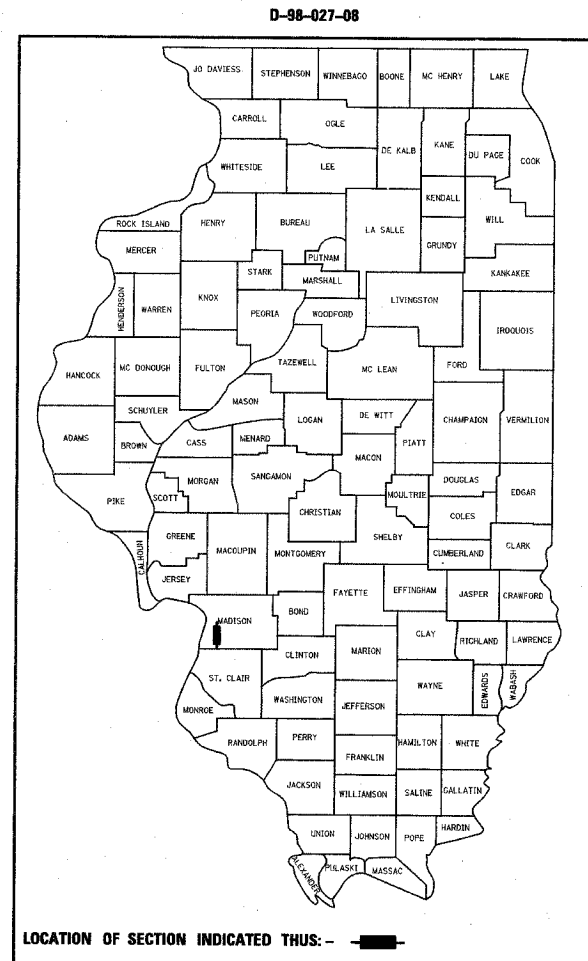
1. TITLE SHEET
2. PLAN SHEET LAYOUT / VOLUME SCHEDULE
- 3-4. SUMMARY OF QUANTITIES
5. GENERAL NOTES, LEGEND AND SPECIFICATIONS
- 6-7. STORM WATER POLLUTION PREVENTION DETAILS
8. RADAR VEHICLE DETECTION DETAILS
9. LIGHT POLE FOUNDATION DETAILS
- 10-11. POLE MOUNTED CCTV DETAIL WITH CAMERA LOWERING DEVICE SHEETS 1 & 2 OF 2
- 12-19. ITS PLAN SHEETS 1 - 8 OF 8
20. TERMINATION-SPLICES TOTALS & SWITCH SCHEDULE
21. COMMUNICATION SYSTEM COVER SHEET
22. COMMUNICATION SHEET MP027004.5 CABINET TO MP027005.9 CABINET
23. COMMUNICATION SHEET MP027005.9 CABINET TO MP025530.9 CABINET
24. BORING LOGS

**STATE OF ILLINOIS**  
**DEPARTMENT OF TRANSPORTATION**  
**DIVISION OF HIGHWAYS**  
**PROPOSED**  
**HIGHWAY PLANS**

**F.A.I. ROUTE 270**  
**SECTION DIST 8 ITS 2009-2**  
**PROJECT: CMI-270-5(083)010**  
**MADISON COUNTY**

**ITS COMMUNICATION, DETECTION AND SURVEILLANCE**  
**DEVICES FROM I-270 STA. 307+00 THEN EAST TO**  
**I-255 STA. 1619+00**

**C-98-019-08**



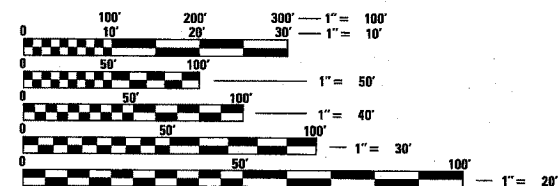
**STANDARDS**

000001-05	280001-04	701101-01
701106-04	701400-02	701406-04
701446	701901	814001-01
814006-01	878001-06	

027004.5A.28C(EX.)  
027004.5A.70R(EX.)  
**STA. 327 + 30**  
**CHOUTEAU TOWNSHIP**

027005.9A.29C(EX.)  
027005.9A.71R(EX.)  
**STA. 399 + 20**  
**CHOUTEAU TOWNSHIP**

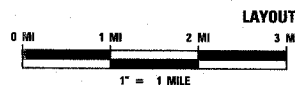
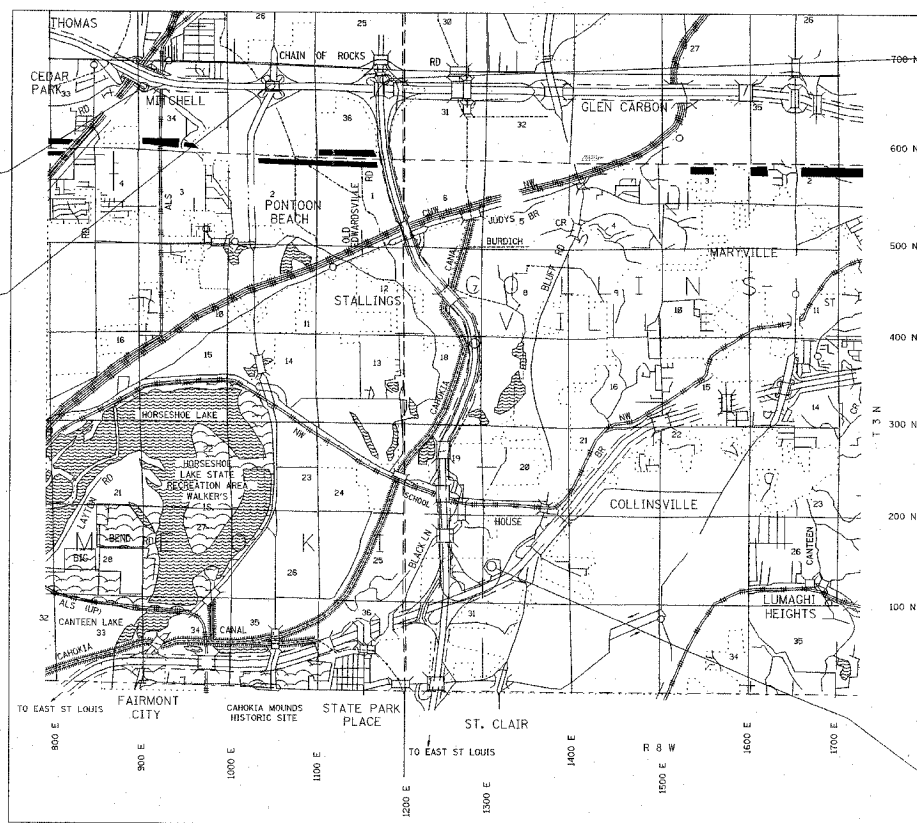
025530.9A.80C(RELOCATED)  
025530.9A.52R  
**STA. 1619 + 00**  
**CHOUTEAU TOWNSHIP**



FULL SIZE PLANS HAVE BEEN PREPARED USING STANDARD ENGINEERING SCALES. REDUCED SIZED PLANS WILL NOT CONFORM TO STANDARD SCALES. IN MAKING MEASUREMENTS ON REDUCED PLANS, THE ABOVE SCALES MAY BE USED.

J.U.L.I.E.  
JOINT UTILITY LOCATION INFORMATION FOR EXCAVATION  
1-800-892-0123  
OR 811

**PROJECT ENGINEER: PATTI LeBEAU (618)-346-3179**  
**SQUAD LEADER: MICHAEL PRESTON (618) 346-3143**  
**LIAISON ENGINEER: BRIAN SNEED (618) 346-3118**  
**CONTRACT NO. 76B54**



TMC  
D8 OFFICE  
COLLINSVILLE  
TOWNSHIP

STATE OF ILLINOIS  
DEPARTMENT OF TRANSPORTATION  
DIVISION OF HIGHWAYS

SUBMITTED March 18 20 08

Mary Jamie  
DEPUTY DIRECTOR OF HIGHWAYS, REGION ENGINEER

May 9, 20 08  
Eric E. Harn  
Interim ENGINEER OF DESIGN AND ENVIRONMENT

May 9, 20 08  
Christina M. Reed  
DIRECTOR OF HIGHWAYS, CHIEF ENGINEER

**PRINTED BY THE AUTHORITY**  
**OF THE STATE OF ILLINOIS**

PLOT DATE = 3/17/2008  
PLOT SCALE = 1"=100'  
REFERENCE = #REF\*