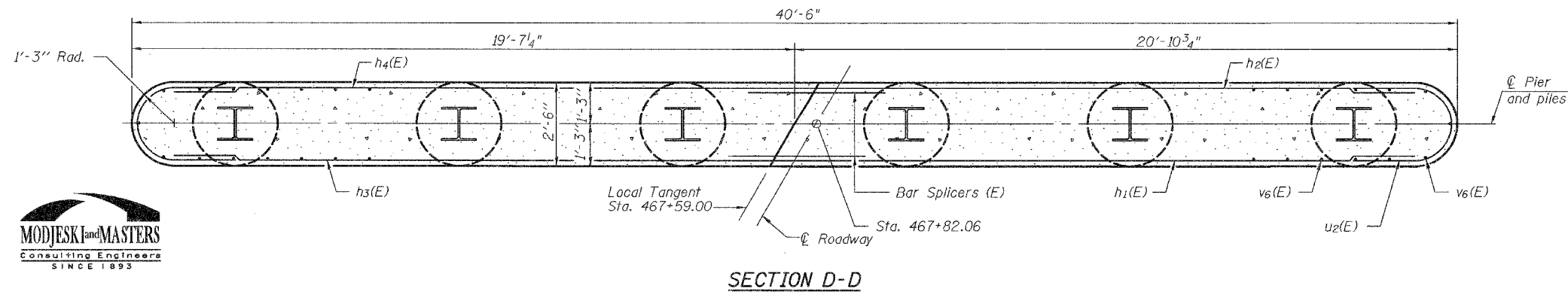
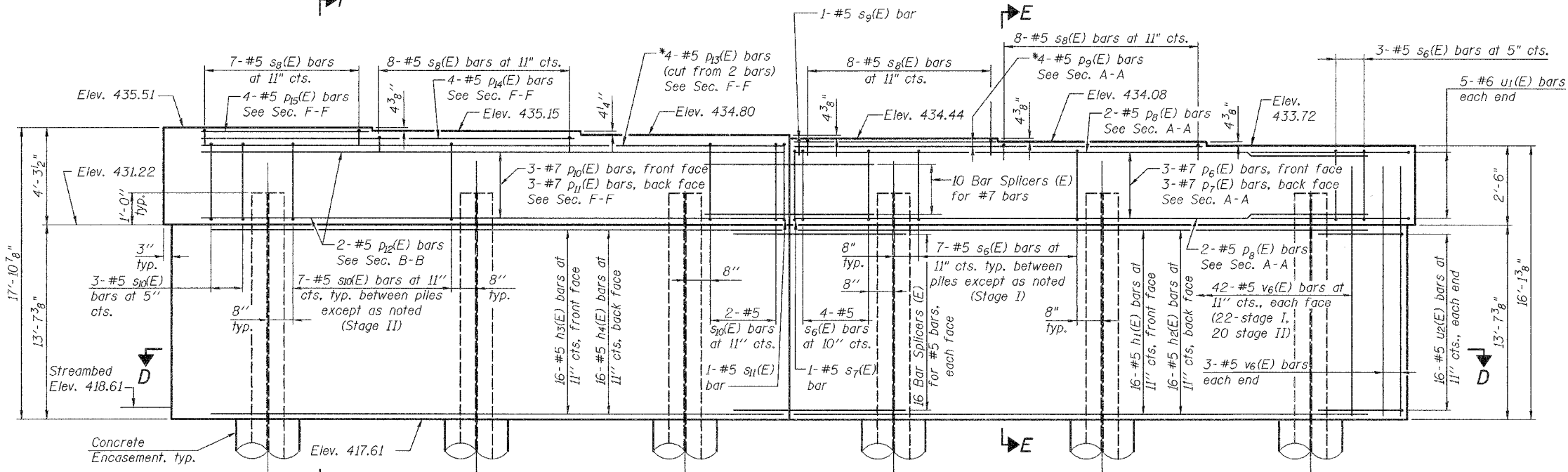
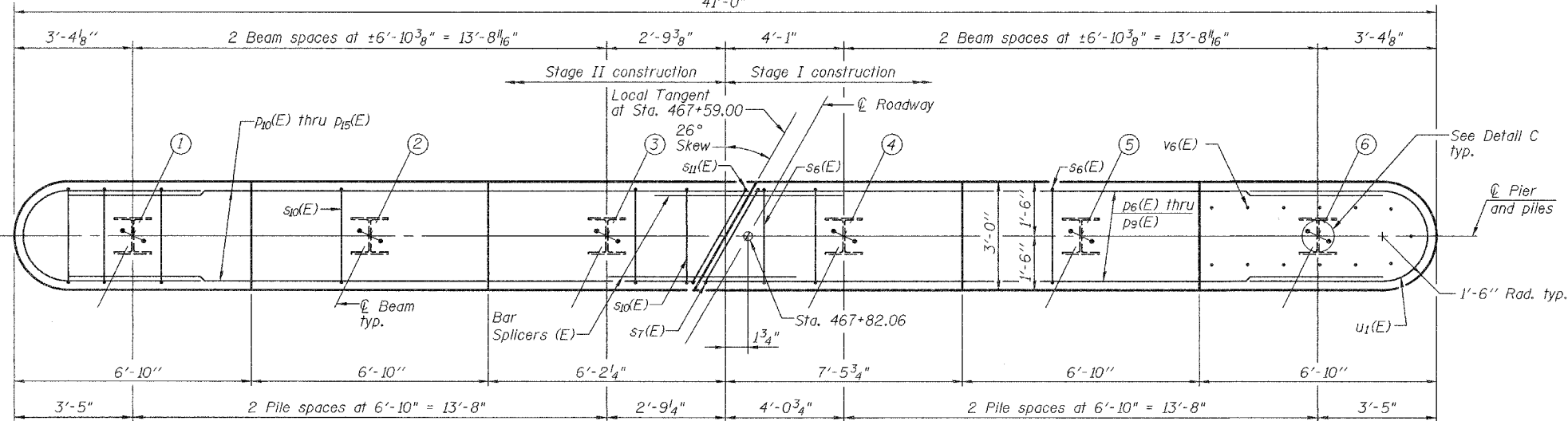
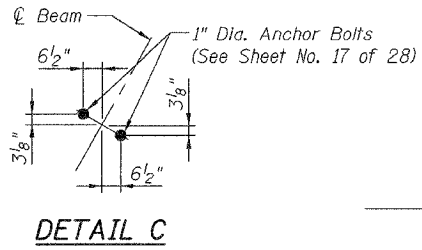


STATE OF ILLINOIS
DEPARTMENT OF TRANSPORTATION
41'-0"

ROUTE NO.	SECTION	COUNTY	SHEET NO.	SHEET	SHEET NO.
F.A.P. 304	5BR-2	CALHOUN	68	45	28 SHEETS
FED. ROAD DIST. NO. 7		ILLINOIS	FED. AID PROJECT-		

Contract #76948

Notes:
Pour steps monolithically with cap.
Space reinforcement in cap to miss anchor bolts.



BILL OF MATERIAL

Bar	No.	Size	Length	Shape
h ₁ (E)	16	#5	20'-0"	
h ₂ (E)	16	#5	19'-0"	
h ₃ (E)	16	#5	17'-9"	
h ₄ (E)	16	#5	18'-9"	
p ₆ (E)	3	#7	20'-1"	
p ₇ (E)	3	#7	18'-11"	
p ₈ (E)	4	#7	19'-4"	
p ₉ (E)	*4	#5	21'-4"	
p ₁₀ (E)	3	#7	17'-7"	
p ₁₁ (E)	3	#7	18'-10"	
p ₁₂ (E)	4	#7	18'-0"	
p ₁₃ (E)	*2	#5	36'-5"	
p ₁₄ (E)	4	#5	12'-1"	
p ₁₅ (E)	4	#5	5'-3"	
s ₆ (E)	21	#5	10'-7"	
s ₇ (E)	1	#5	11'-3"	
s ₈ (E)	31	#5	7'-0"	
s ₉ (E)	1	#5	7'-4"	
s ₁₀ (E)	19	#5	12'-9"	
s ₁₁ (E)	1	#5	13'-5"	
u ₁ (E)	10	#6	11'-1"	
u ₂ (E)	32	#5	10'-7"	
v ₆ (E)	90	#5	15'-1"	
Structure Excavation	Cu. Yd.		37	
Concrete Structures	Cu. Yd.		65.6	
Reinforcement Bars, Epoxy Coated	Pound		4,950	
Furnishing Steel Piles HP 14x89	Foot		310	
Driving Piles	Foot		310	
Test Pile Steel HP 14x89	Each		1	
Concrete Encasement Underwater Structure Excavation Protection-Location #2	Cu. Yd.		3.3	
	Each		1	

For details of bar splicer, see Sheet No. 24 of 28.
For details of piles and concrete encasement, see Sheet No. 23 of 28.
For details of Section E-E and F-F, see Sheet No. 22 of 28.
For bar dimensions, see Sheet No. 22 of 28.

PILE DATA

Type: Steel HP 14x89
Nominal Required Bearing: 600 kips
Allowable Resistance Available: 240 kips
Est. Length: 62 ft
No. Production Piles: 5
No. Test Piles: 1

PIER 2 DETAILS
IL. ROUTE 100 OVER
CRAWFORD CREEK

F.A.P. ROUTE 304 - SECTION 5BR-2
CALHOUN COUNTY
STATION 467+59.00
STRUCTURE NO. 007-0027

DESIGNED	YSS
CHECKED	RLM
DRAWN	AEC
CHECKED	RLM



02/27/08