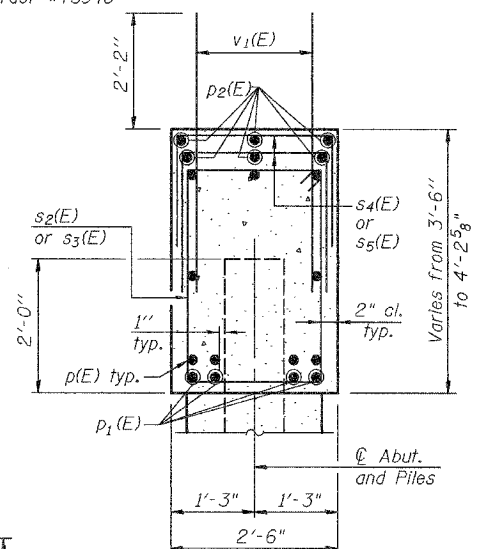
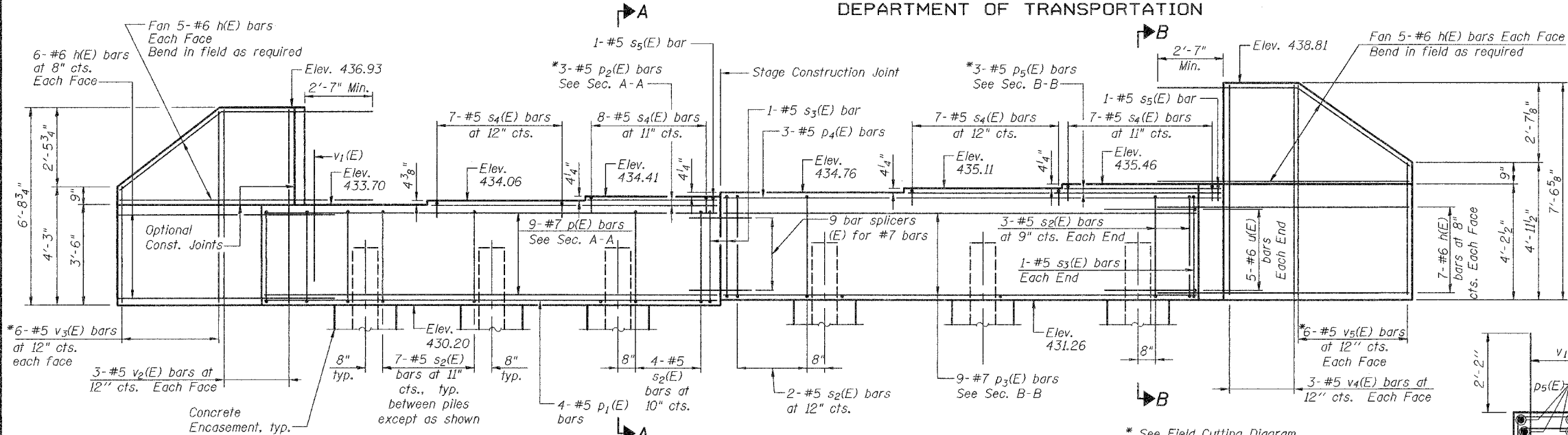


Notes: Four steps monolithically with cap.
Space reinforcement in cap to miss anchor bolts.

STATE OF ILLINOIS
DEPARTMENT OF TRANSPORTATION

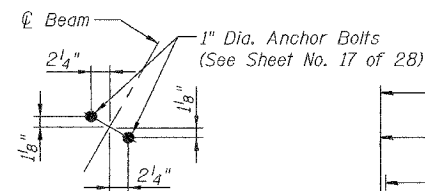
ROUTE NO.	SECTION	COUNTY	TOTAL SHEETS	SHEET	SHEET NO.
F.A.P. 304	5BR-2	CALHOUN	68	42	28 SHEETS
FED. ROAD DIST. NO. 7	ILLINOIS	FED. AID PROJECT			

Contract #76948

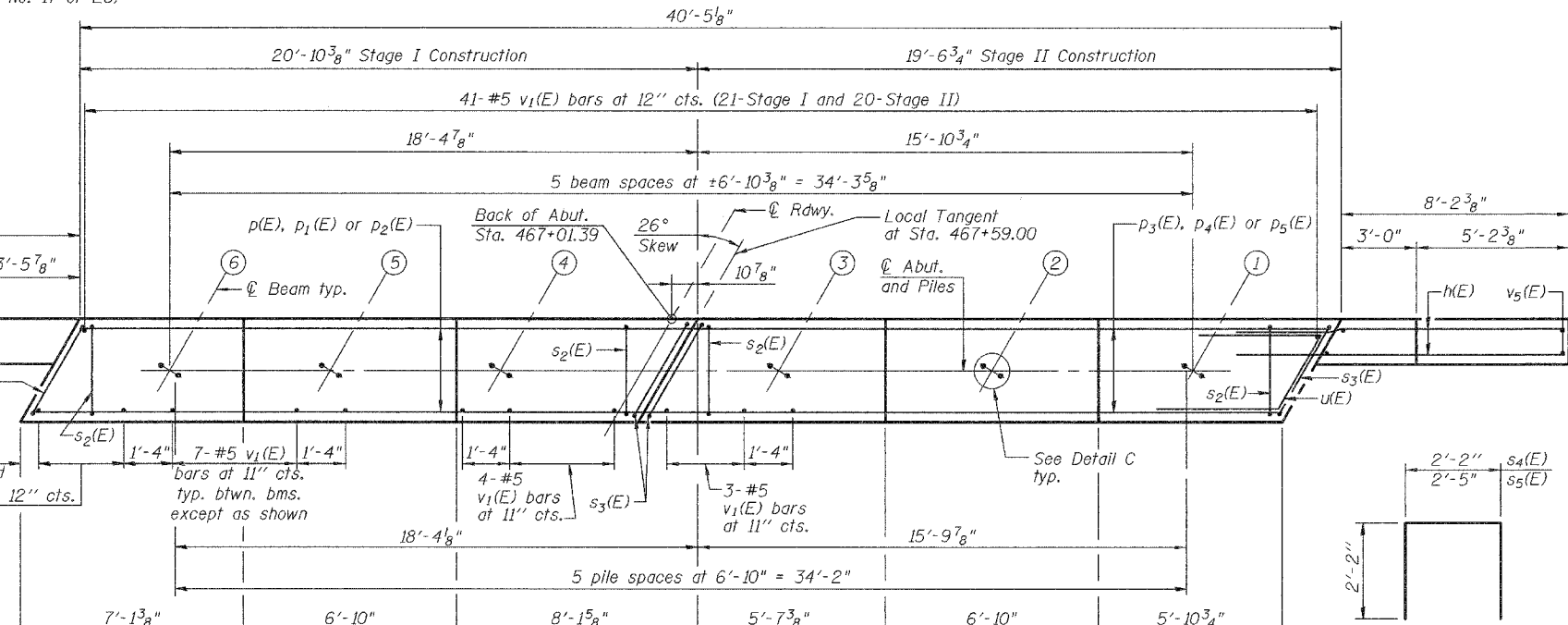


ELEVATION

* See Field Cutting Diagram



DETAIL C



PLAN

(s4(E) and s5(E) not shown for clarity.)

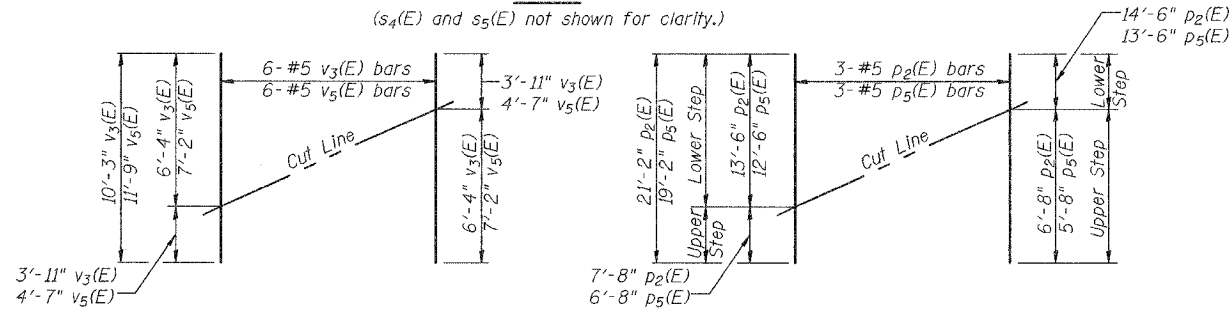
PILE DATA

Type: Steel HP 12x53
Nominal Required Bearing: 340 kips
Factored Resistance Available: 170 kips
Est. Length: 53 ft
No. Production Piles: 5
No. Test Piles: 1

DESIGNED	YSS
CHECKED	RLM
DRAWN	AEC
CHECKED	YSS



02/27/08



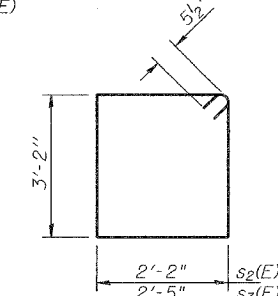
Order v3(E) and v5(E) full length. Cut as shown and use remainder of bars in opposite face.

Order p2(E) and p5(E) full length. Cut as shown and use remainder of bars in top layer.

FIELD CUTTING DIAGRAM

BARS s4(E) & s5(E)

14'-6" p2(E)
13'-6" p5(E)



BARS s2(E) & s3(E)

SEC. B-B

BARS s4(E) & s5(E)

BAR u(E)

BILL OF MATERIAL

Bar	No.	Size	Length	Shape
h(E)	46	#6	11'-7"	
p(E)	9	#7	20'-6"	
p1(E)	4	#5	20'-6"	
p2(E)	3	#5	21'-2"	
p3(E)	9	#7	19'-3"	
p4(E)	3	#5	19'-3"	
p5(E)	3	#5	19'-2"	
s2(E)	40	#5	11'-7"	
s3(E)	4	#5	12'-1"	
s4(E)	29	#5	6'-6"	
s5(E)	2	#5	6'-9"	
u(E)	10	#6	9'-5"	
v1(E)	82	#5	4'-4"	
v2(E)	6	#5	6'-5"	
v3(E)	6	#5	10'-3"	
v4(E)	6	#5	7'-3"	
v5(E)	6	#5	11'-9"	
Structure Excavation	Cu. Yd.	159		
Concrete Structures	Cu. Yd.	18.4		
Reinforcement Bars, Epoxy Coated	Pound	3,290		
Furnishing Steel Piles HP 12x53	Foot	265		
Driving Piles	Foot	265		
Test Pile Steel HP 12x53	Each	1		
Concrete Encasement	Cu. Yd.	2.1		

For details of Bar Splicers, see Sheet No. 24 of 28.
For details of piles and Concrete Encasement, see Sheet No. 23 of 28.

SOUTH ABUTMENT DETAILS

IL. ROUTE 100 OVER
CRAWFORD CREEK
F.A.P. ROUTE 304 - SECTION 5BR-2
CALHOUN COUNTY
STATION 467+59.00
STRUCTURE NO. 007-0027