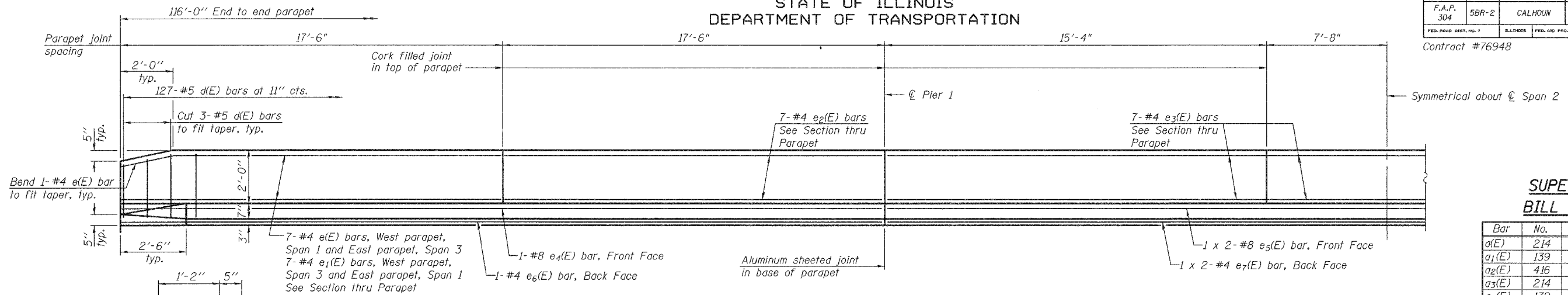


STATE OF ILLINOIS
DEPARTMENT OF TRANSPORTATION

ROUTE NO.	SECTION	COUNTY	TOTAL SHEETS	SHEET NO.
F.A.P. 304	5BR-2	CALHOUN	68	37
FED. ROAD DIST. NO. 7		ILLINOIS	FED. AID PROJECT	

SHEET NO. 13
28 SHEETS

Contract #76948

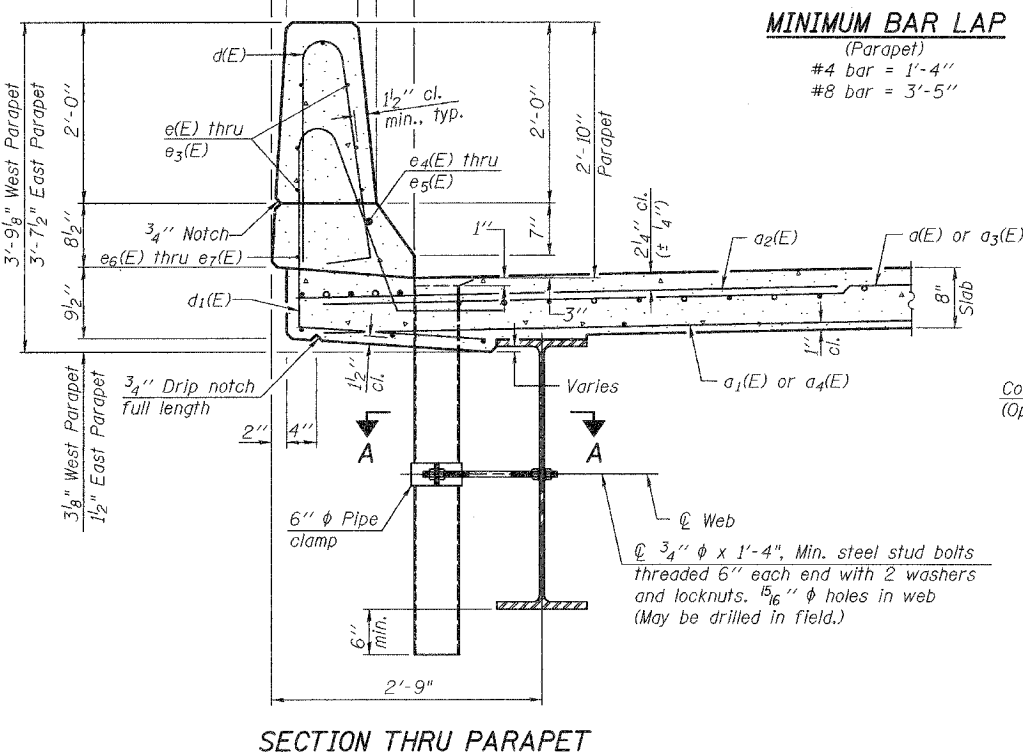


INSIDE ELEVATION OF PARAPET

SUPERSTRUCTURE
BILL OF MATERIAL

Bar	No.	Size	Length	Shape
d(E)	214	#5	18'-2"	—
a1(E)	139	#5	17'-5"	—
a2(E)	416	#6	6'-0"	—
a3(E)	214	#5	16'-11"	—
a4(E)	139	#5	16'-2"	—
a5(E)	4	#5	19'-5"	—
a6(E)	4	#5	18'-0"	—
b(E)	156	#5	30'-3"	—
b1(E)	72	#6	25'-3"	—
b2(E)	155	#5	24'-6"	—
d(E)	254	#5	5'-7"	—
d1(E)	254	#5	7'-7"	—
e(E)	14	#4	17'-8"	—
e1(E)	14	#4	16'-10"	—
e2(E)	28	#4	17'-3"	—
e3(E)	42	#4	15'-1"	—
e4(E)	4	#8	34'-9"	—
e5(E)	4	#8	24'-7"	—
e6(E)	4	#4	34'-9"	—
e7(E)	4	#4	23'-7"	—
m(E)	4	#6	19'-5"	—
m1(E)	6	#6	20'-7"	—
m2(E)	12	#6	8'-9"	—
m3(E)	8	#6	6'-6"	—
m4(E)	4	#6	2'-9"	—
m5(E)	2	#6	3'-9"	—
m6(E)	4	#6	18'-1"	—
m7(E)	6	#6	19'-4"	—
m8(E)	12	#6	8'-4"	—
m9(E)	2	#6	2'-5"	—
s(E)	72	#5	6'-9"	—
s1(E)	62	#4	8'-4"	—
v(E)	70	#5	3'-4"	—
Reinforcement Bars, Epoxy Coated		Pound		35,670
Concrete Superstructure		Cu. Yds.		155.4

Bars indicated thus 1 x 2-#4 etc. indicates 1 line of bars with 2 lengths per line. For details of bar splicers, see Sheet No. 24 of 28.

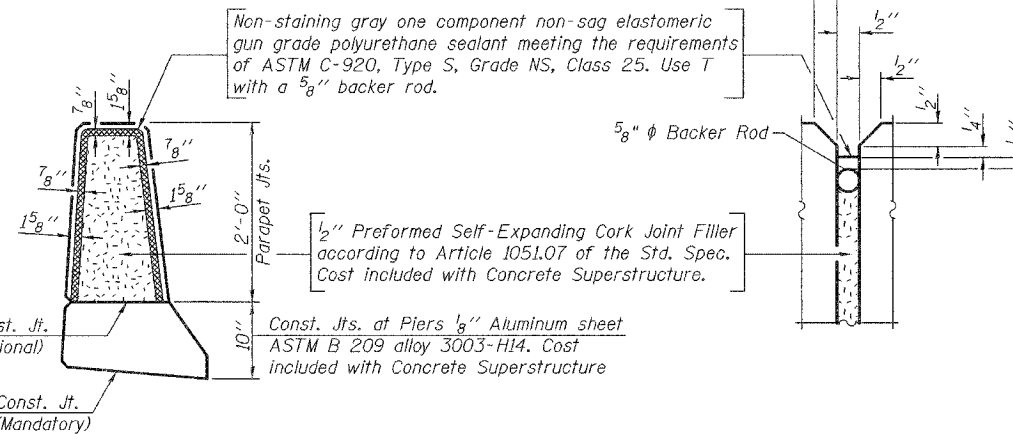


SECTION THRU PARAPET

MINIMUM BAR LAP

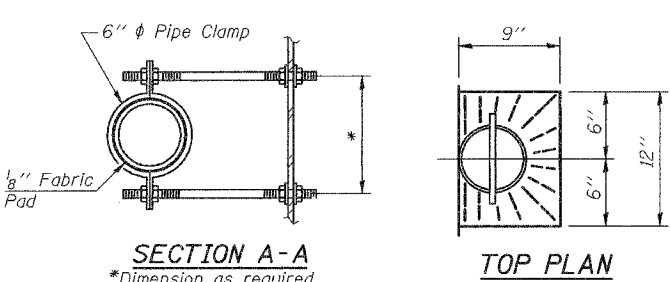
(Parapet)
#4 bar = 1'-4"
#8 bar = 3'-5"

Const. Jt. (Optional)
Const. Jt. (Mandatory)

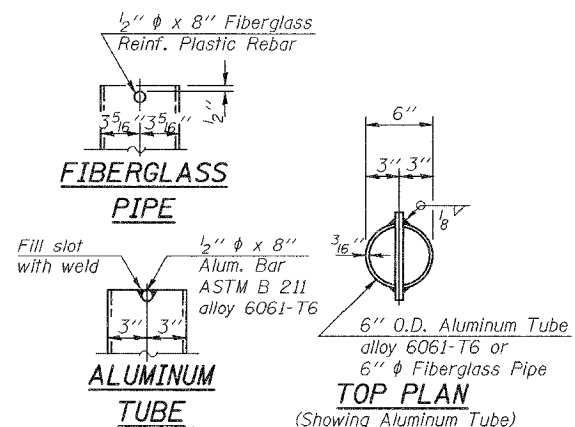


PARAPET JOINT DETAILS

Notes:
All edges of concrete structures shall have a standard 3/4" chamfer, except as noted.
The exterior surfaces of the floor drains shall be painted with the finish coat as specified in the special provisions for Cleaning and Painting New Metal Structures. The exterior surfaces of the drains shall be cleaned according to Steel Structures Painting Council's Spec. SSPC-SPI prior to painting.
Fiberglass pipe shall conform to ASTM D 2996, with short-time rupture strength hoop tensile stress of 30,000 p.s.i. minimum.
The clamping device and inserts shall be galvanized according to AASHTO M 232.
For concrete parapet slipforming option, see Sheet No. 26 of 28.

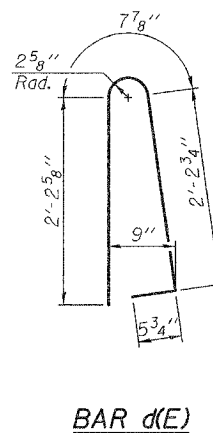


SECTION A-A
*Dimension as required by Pipe Clamp

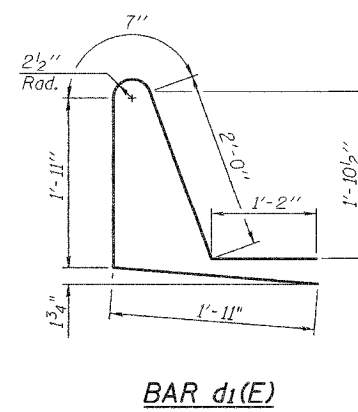


ALUMINUM TUBE

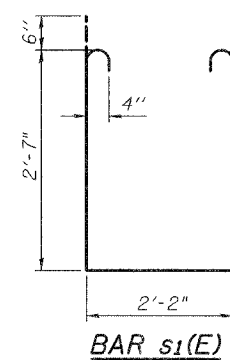
TOP PLAN (Showing Aluminum Tube)



BAR d(E)

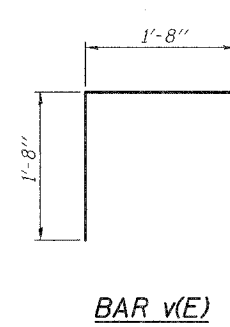


BAR d1(E)



BAR s(E)

BAR s1(E)



BAR v(E)

SUPERSTRUCTURE DETAILS

IL. ROUTE 100 OVER
CRAWFORD CREEK
F.A.P. ROUTE 304 - SECTION 5BR-2
CALHOUN COUNTY
STATION 467+59.00
STRUCTURE NO. 007-0027

DESIGNED	YSS
CHECKED	RLM
DRAWN	PRC
CHECKED	RLM



02/27/08