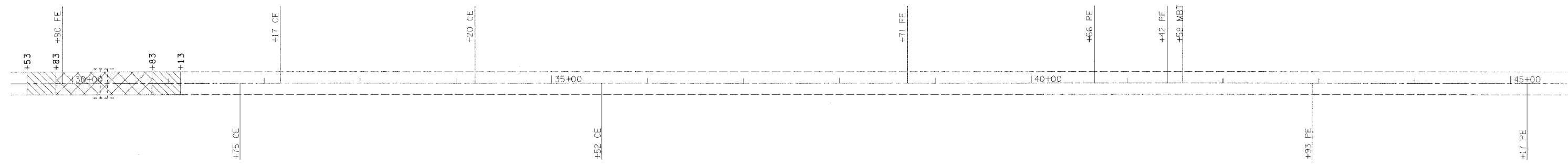


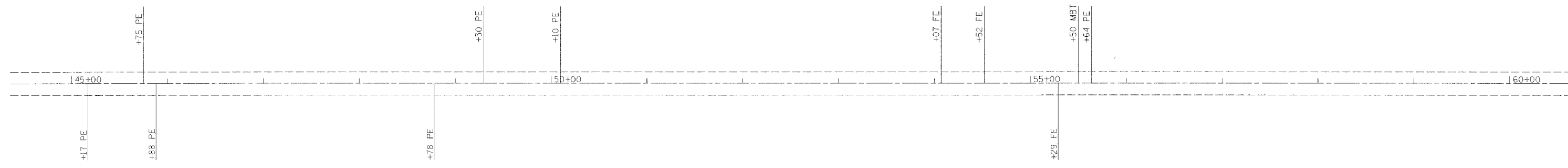
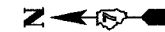


F.A.P. RTE.	SECTION	COUNTY	TOTAL SHEETS	SHEET NO.
776	(10)RS-1	WAYNE	21	8
STA.		TO STA.		
FED. ROAD DIST. NO.		ILLINOIS FED. AID PROJECT		



 HOT MIX ASPHALT SURFACE REMOVAL 1 1/2"  
 PAVEMENT TRANSITION (See Detail Sheet # )



REVISIONS	
NAME	DATE

ILLINOIS DEPARTMENT OF TRANSPORTATION

**STA 30 + 00**  
**TO**  
**STA 60 + 00**

SCALE: VERT. \_\_\_\_\_  
HORIZ. \_\_\_\_\_

DATE \_\_\_\_\_ DRAWN BY \_\_\_\_\_  
CHECKED BY \_\_\_\_\_

teasleyck  
1/17/2008  
c:\projects\74081\400605pa.dgn  
PS 2

PLOT DATE = 1/17/2008  
PLOT SCALE = 50.0000' / IN.  
USER NAME = teasleyck