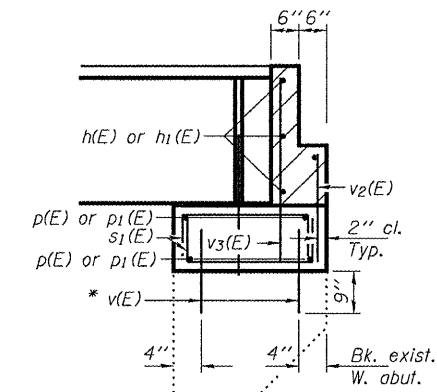
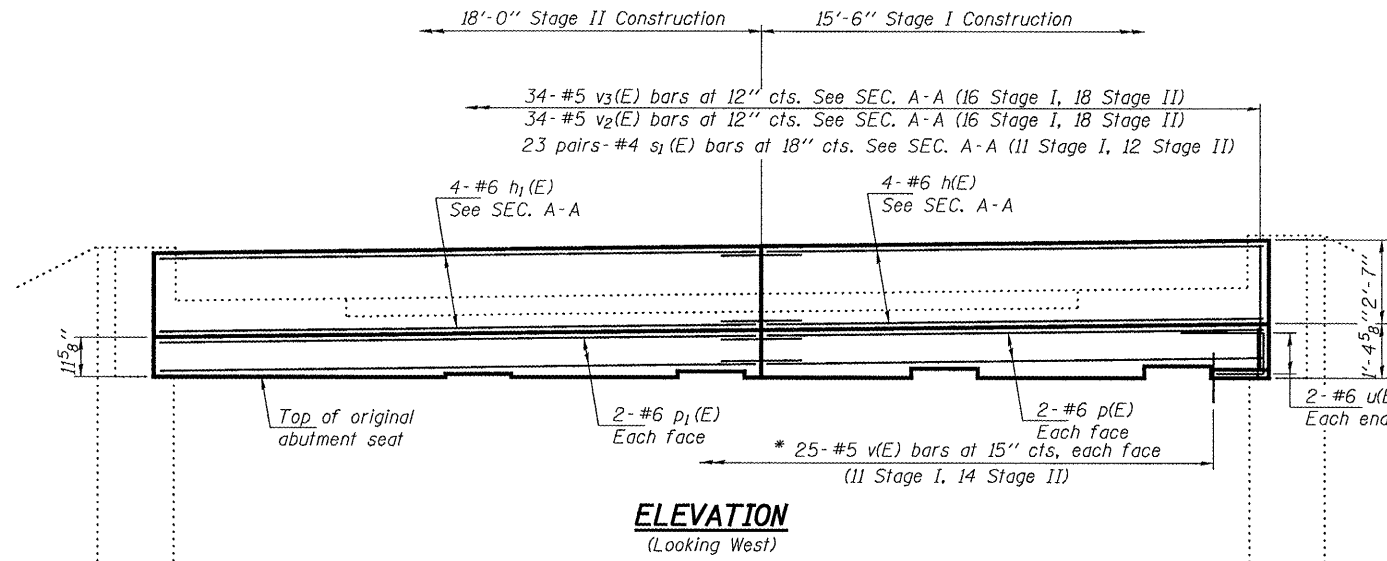
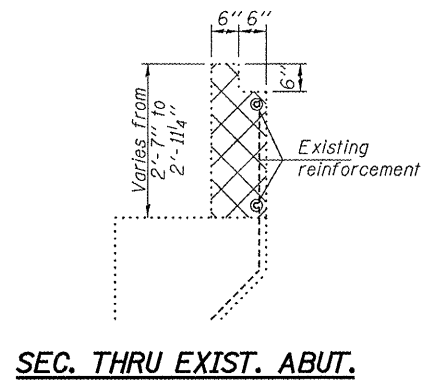


STATE OF ILLINOIS
DEPARTMENT OF TRANSPORTATION

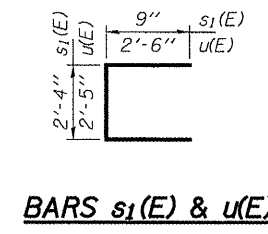
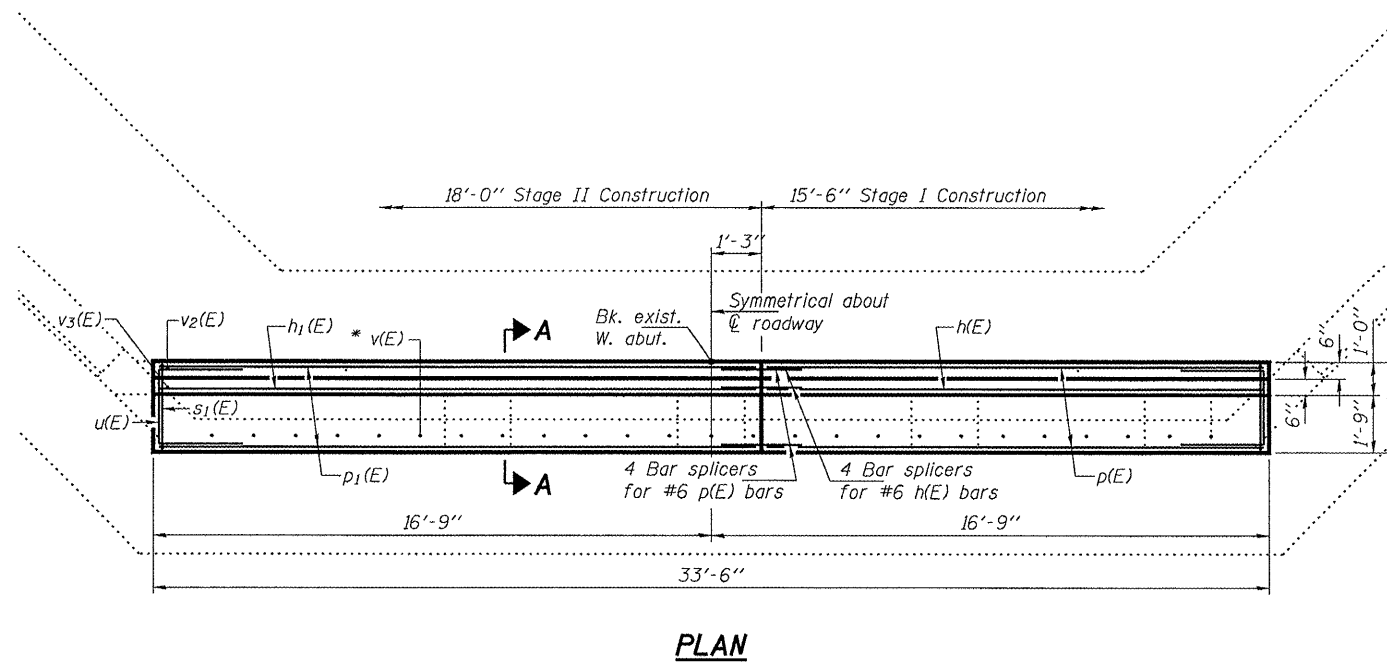
ROUTE NO.	SECTION	COUNTY	TOTAL SHEETS	SHEET NO.
IL 97		SANGAMON	29	20
FED. ROAD DIST. NO. 7	ILLINOIS	FED. AID PROJECT		

SHEET NO. 7
8 SHEETS

Contract Number: 72B70



* Epoxy grout v(E) bars in 9" min. holes according to Article 584 of the Standard Specifications.



BILL OF MATERIAL

Bar	No.	Size	Length	Shape
$h(E)$	4	#6	15'-2"	—
$h_1(E)$	4	#6	17'-8"	—
$p(E)$	4	#6	15'-2"	—
$p_1(E)$	4	#6	17'-8"	—
$s_1(E)$	46	#4	3'-10"	□
$u(E)$	4	#6	7'-5"	C
$v(E)$	50	#5	1'-6"	—
$v_2(E)$	34	#5	2'-0"	—
$v_3(E)$	34	#5	3'-1"	—
Concrete Removal			Cu. Yd.	3.1
Concrete Structures			Cu. Yd.	4.0
Concrete Superstructure			Cu. Yd.	2.4
Reinforcement Bars, Epoxy Coated			Pound	820

WEST ABUTMENT
IL. 97 OVER PRAIRIE CREEK
SANGAMON COUNTY
SN 084-0046

Notes:
Hatched area to be poured after beams are in place.
Cost of concrete included with Concrete Superstructure.
Cross hatched area indicates Concrete Removal.
All edges shall have standard $\frac{3}{4}$ " chamfers except as noted.
Removal of concrete between T-girder stems at abutments is included with Removal of Existing Superstructures.

DESIGNED	VHV
CHECKED	ATH
DRAWN	ballva
CHECKED	VHV ATH

APRIL 30, 2008
EXAMINED *Carl Prosser*
ENGINEER OF STRUCTURAL SERVICES
PASSED *Ralph E. Anderson*
ENGINEER OF BRIDGES AND STRUCTURES