

STATE OF ILLINOIS
DEPARTMENT OF TRANSPORTATION

ROUTE NO.	SECTION	COUNTY	TOTAL SHEETS	SHEET NO.	SHEET NO. 1 8 SHEETS
IL 97		SANGAMON	29	14	
FED. ROAD DIST. NO. 7	ILLINOIS	FED. AID PROJECT			

Contract Number: 72B70

GENERAL NOTES

Reinforcement bars shall conform to the requirements of ASTM A 706 Gr 60 (IL Modified). See Special Provisions.

Reinforcement bars designated (E) shall be epoxy coated.

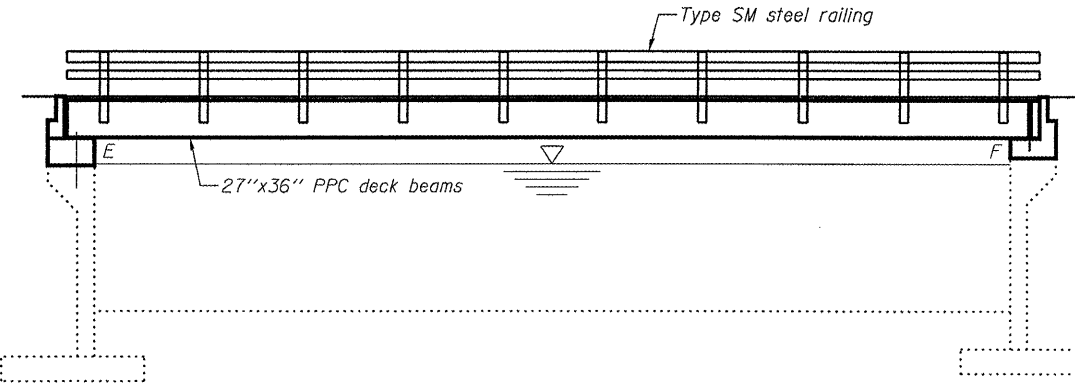
Plan dimensions and details relative to existing plans are subject to routine variations. The Contractor shall field verify existing dimensions and details affecting new construction and make necessary approved adjustments prior to construction or ordering of materials. Such variations shall not be cause for additional compensation for a change in scope of the work, however, the Contractor will be paid for the quantity actually furnished based upon the unit price bid for the work.

Existing reinforcement bars extending into the removal area shall be cleaned, straightened and incorporated into the new construction. Any reinforcement bars that are damaged during concrete removal shall be replaced with an approved bar splicer or anchorage system. Cost included with Concrete Removal.

Attach new name plate to the backside of 8" Rail element. Existing name plate is to be removed, cleaned and relocated adjacent to new name plate. Cost included in the cost of Name Plates.

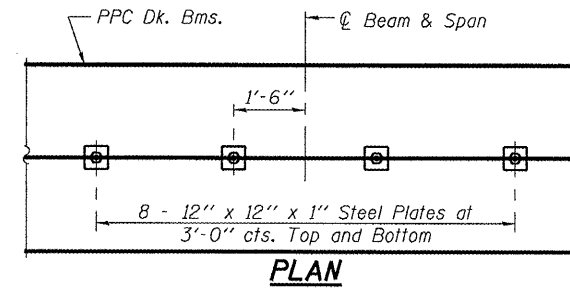
All structural steel shall be shop painted with the inorganic zinc rich primer per AASHTO M300, Type 1. Cost included with HMA Surface Course.

Temporary concrete barrier shall only be anchored into overlay and not into the PPC deck beams.

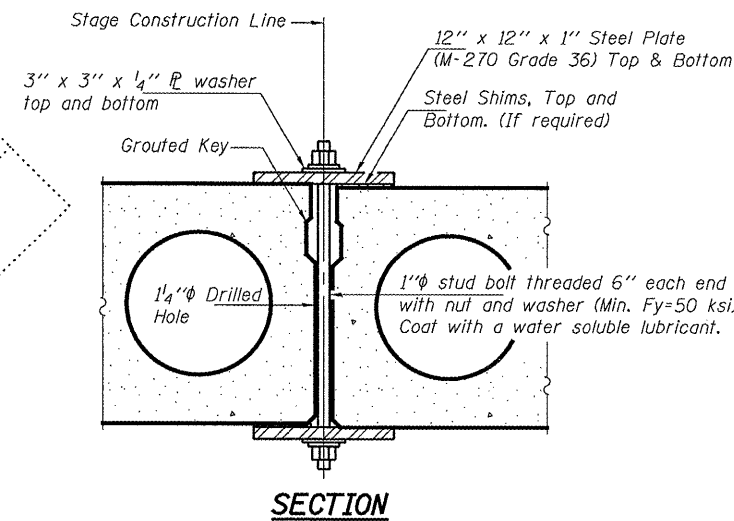


ELEVATION

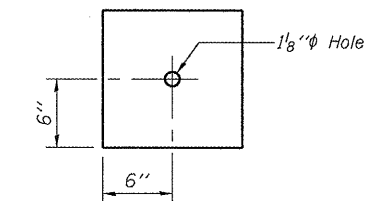
* To be installed prior to switching traffic over for Stage I. Steel beams to be salvaged. See Special Provision for Erecting Structural Steel.



PLAN



SECTION



CLAMPING PLATE

Notes:
See Special Provisions for Stage Construction Precast Prestressed Concrete Deck Beams.
See Stage Construction Detail for traffic lane.
Cost is included with Erecting Precast Prestressed Concrete Deck Beams.

TOTAL BILL OF MATERIAL

ITEM	UNIT	SUPER	SUB	TOTAL
Concrete Removal	Cu. Yd.	6.8		6.8
Concrete Structures	Cu. Yd.		9.6	9.6
Concrete Superstructure	Cu. Yd.	4.8		4.8
Name Plates	Each	1		1
Erecting Precast Prestressed Concrete Deck Beams (27" Depth)	Sq. Ft.	1927		1927
Reinforcement Bars, Epoxy Coated	Pound		1680	1680
Removal of Existing Superstructures	Each	1		1
Steel Railing, Type SM	Foot	121		121
Waterproofing Membrane System	Sq. Yd.	214		214
Erecting Structural Steel	Pound		26060	26060
Silicone Joint Sealer	Foot	33		33
Hot-Mix Asphalt Surface Course, Mix "D", N70	Tons	36		36
Polymer Concrete	Cu. Ft.	1.2		1.2
PC Mortar Fairing Course	Foot	584		584
Bar Splicers	Each	8	8	16

LOADING HS20-44

DESIGN SPECIFICATIONS
2002 AASHTO Standard Specifications

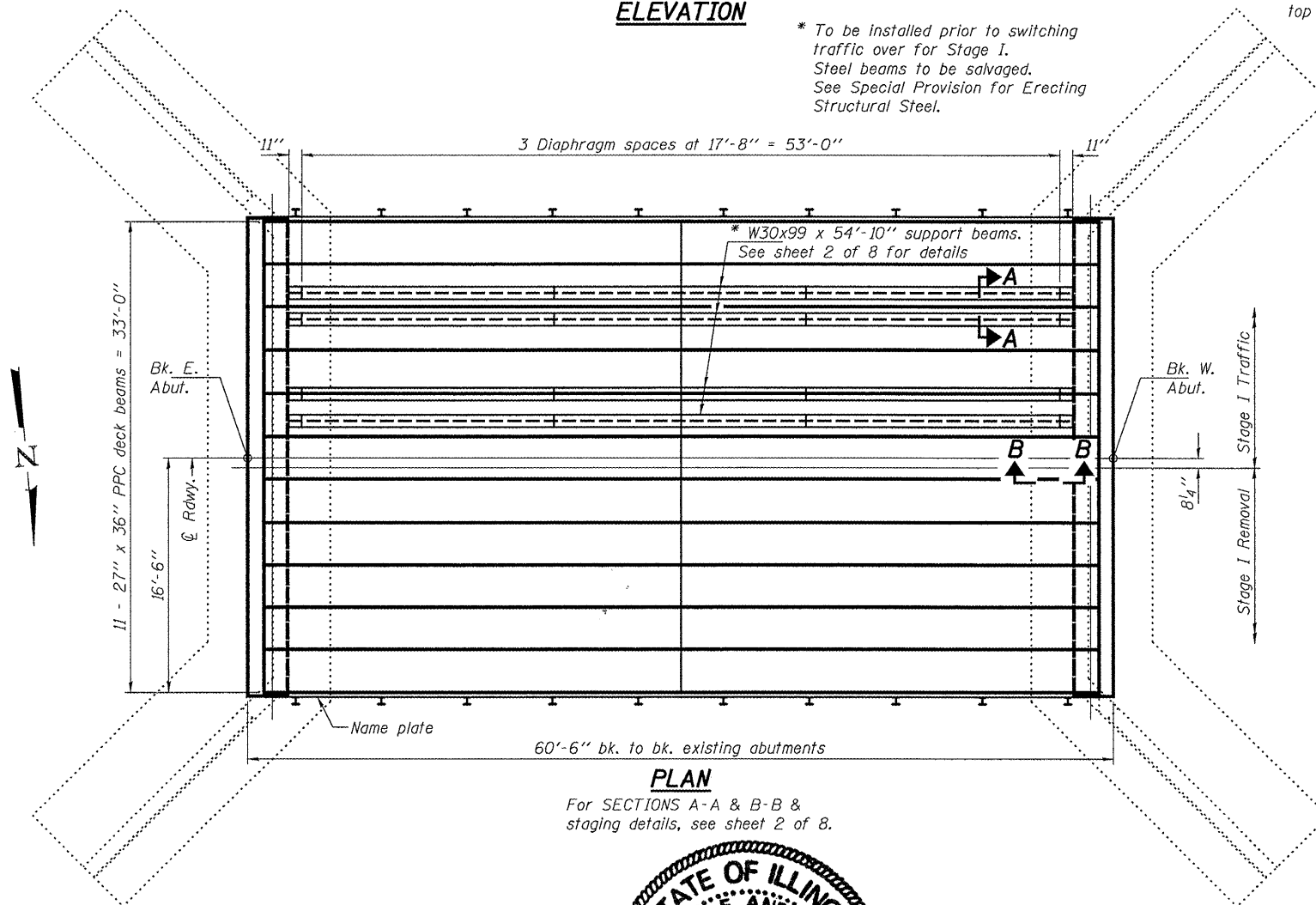
DESIGN STRESSES

FIELD UNITS
f'c = 3,500 psi
fy = 60,000 psi (Reinforcement)

PRECAST PRESTRESSED UNITS

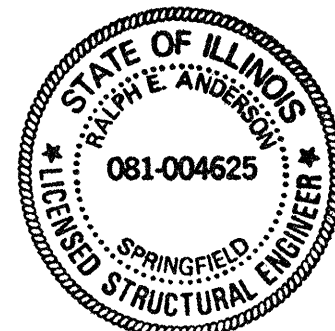
f'c = 5,000 psi
f'ci = 4,000 psi
f's = 270,000 psi (1/2" low lax strands)
f'si = 201,960 psi (1/2" low lax strands)

PLAN AND ELEVATION
IL. 97 OVER PRAIRIE CREEK
SANGAMON COUNTY
SN 084-0046



PLAN

For SECTIONS A-A & B-B & staging details, see sheet 2 of 8.



STATION 270+33
REBUILD 2008 BY
STATE OF ILLINOIS
LOADING HS20
STRUCTURE NO. 084-0046

NAME PLATE
See Std. 515001

DESIGNED	Vic for H. Veliz	APRIL 30, 2008
CHECKED	Adrian J. Holloway	EXAMINED
DRAWN	boliva	PASSED
CHECKED	VHV ATH	