

F.A.I. RTE.	SECTION	COUNTY	TOTAL SHEETS	SHEET NO.
72	D5 PATCHING	CHAMPAIGN	17	1

STATE OF ILLINOIS
DEPARTMENT OF TRANSPORTATION
DIVISION OF HIGHWAYS

**PROPOSED
HIGHWAY PLANS**

F.A.I. ROUTE 72 (I-72)
SECTION D5 PATCHING
CHAMPAIGN COUNTY

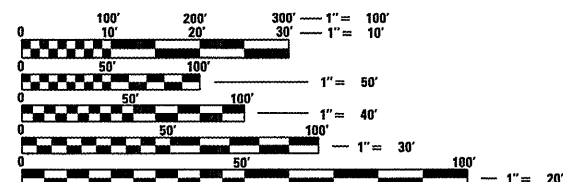
C-95-013-07

PATCHING FROM PIATT COUNTY LINE TO I-57

FOR INDEX OF SHEETS, SEE SHEET NO. 2
FOR SUMMARY OF QUANTITIES, SEE SHEET NO. 5

CURRENT ADT = 13,900 (2005) I-72 FROM PIATT CO. LINE TO IL 47
CURRENT ADT = 14,900 (2005) I-72 FROM IL 47 TO I-57
CURRENT ADT = 13,200 (2005) I-72 FROM I-57 TO PROJECT END

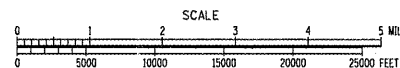
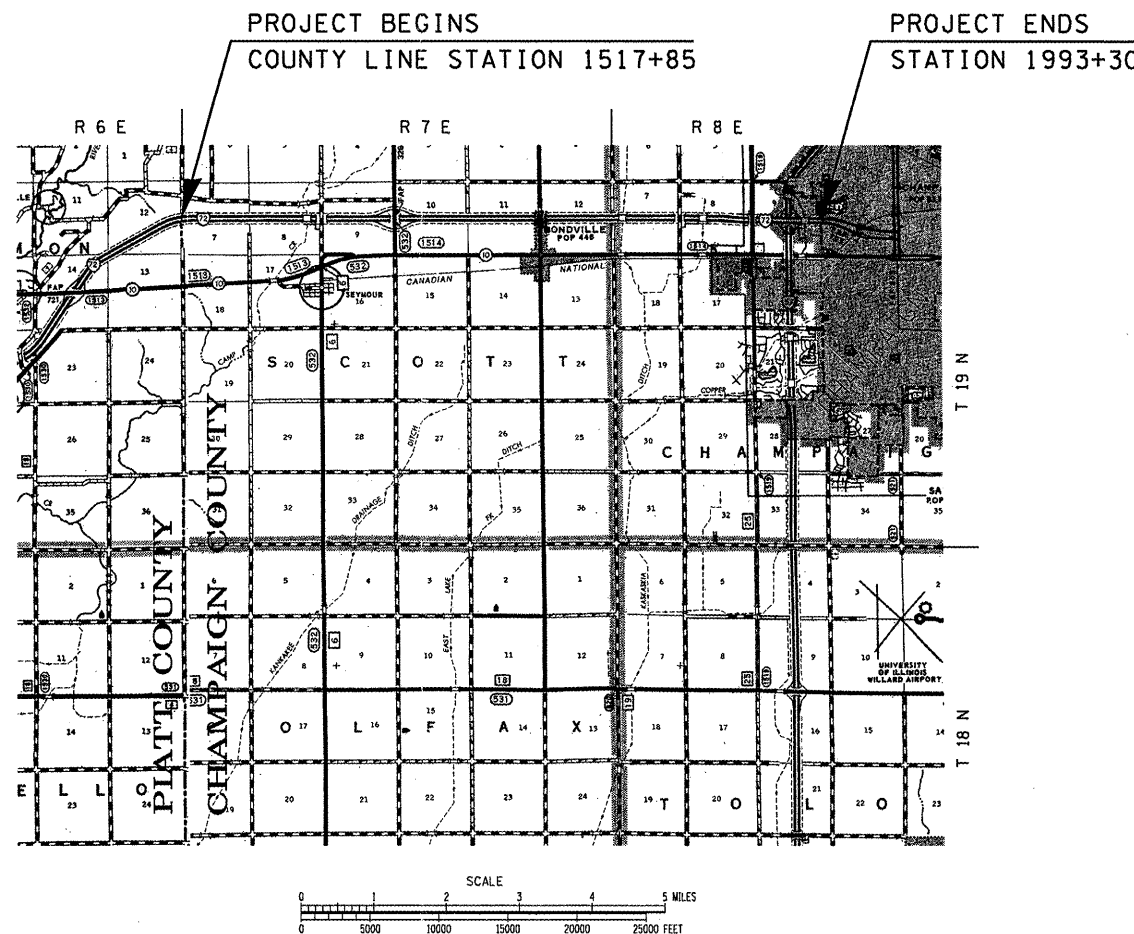
DESIGN DESIGNATION
N/A



FULL SIZE PLANS HAVE BEEN PREPARED USING STANDARD ENGINEERING SCALES. REDUCED SIZED PLANS WILL NOT CONFORM TO STANDARD SCALES. IN MAKING MEASUREMENTS ON REDUCED PLANS, THE ABOVE SCALES MAY BE USED.

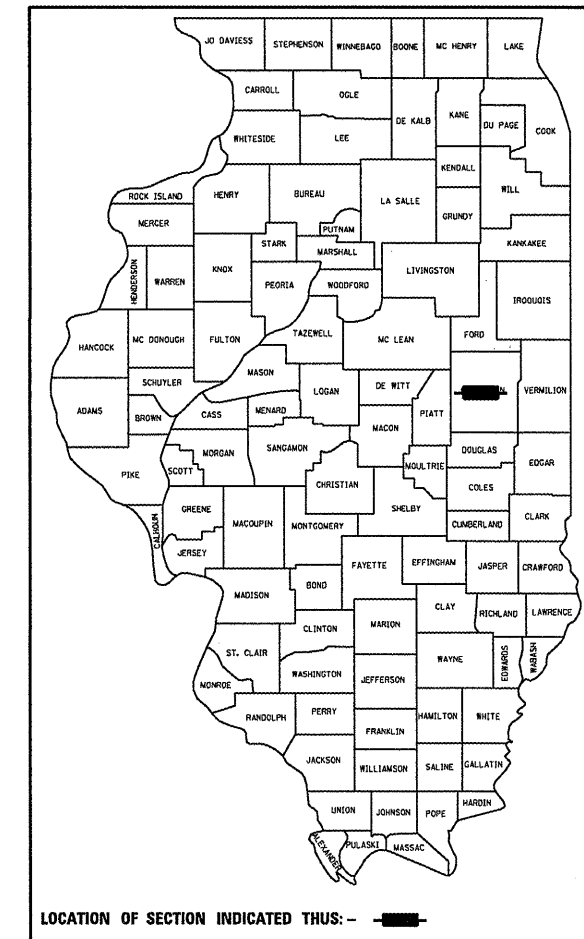
J.U.L.I.E.
JOINT UTILITY LOCATION INFORMATION FOR EXCAVATION
1-800-892-0123

CONTRACT NO. 70646



TOTAL LENGTH OF SECTION & PROJECT = 47,545.00 FEET = 9.005 MILES
NET LENGTH OF SECTION & PROJECT = 47,103.27 FEET = 8.921 MILES

D-95-013-07



STATE OF ILLINOIS
DEPARTMENT OF TRANSPORTATION
DIVISION OF HIGHWAYS

SUBMITTED 3/13 20 08
Frank E. Crouse
DEPUTY DIRECTOR OF HIGHWAYS, REGION THREE ENGINEER

May 9, 20 08
Eric E. Harms
ENGINEER OF DESIGN AND ENVIRONMENT

May 9, 20 08
Christine M. Reed
DIRECTOR OF HIGHWAYS, CHIEF ENGINEER

PRINTED BY THE AUTHORITY
OF THE STATE OF ILLINOIS

(217)465-4181

PROJECT ENGINEER: NANCY FASIG

DESIGNER: TODD BLACK