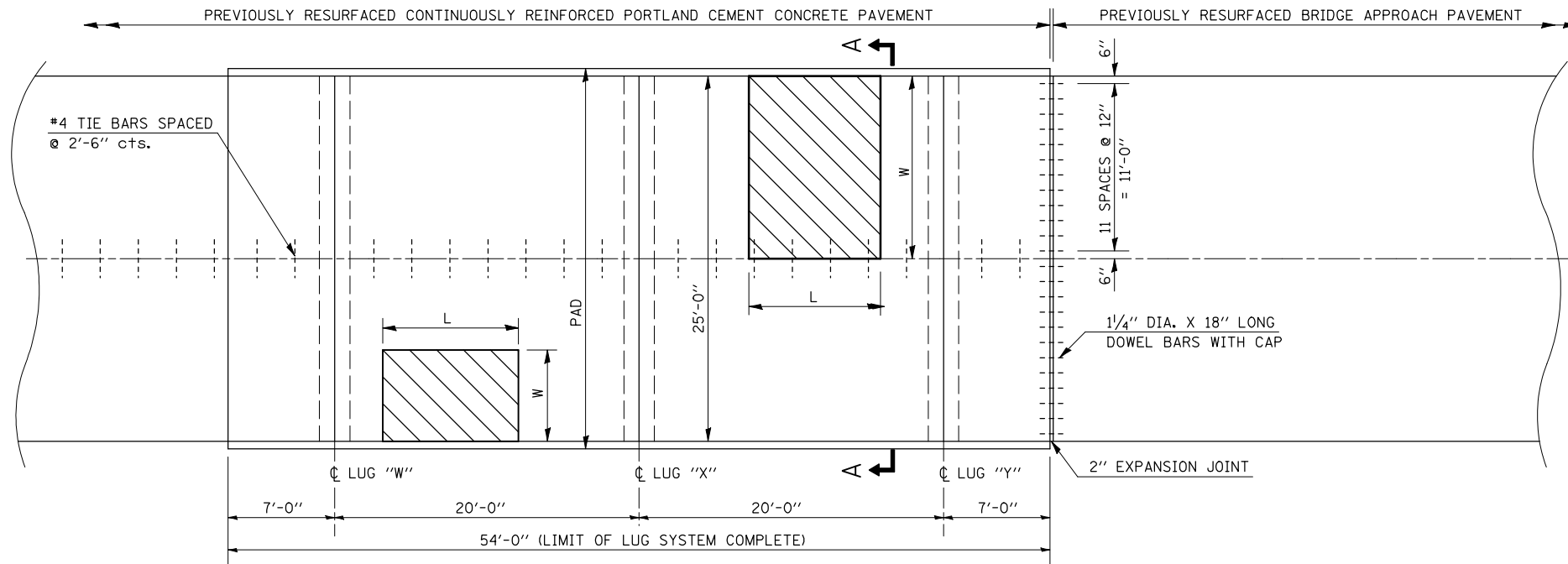


F.A.I. RTE.	SECTION	COUNTY	TOTAL SHEETS	SHEET NO.
74	(20-1)RS-2	DEWITT	97	55

DETAIL FOR PARTIAL DEPTH PATCHING AT LUGS



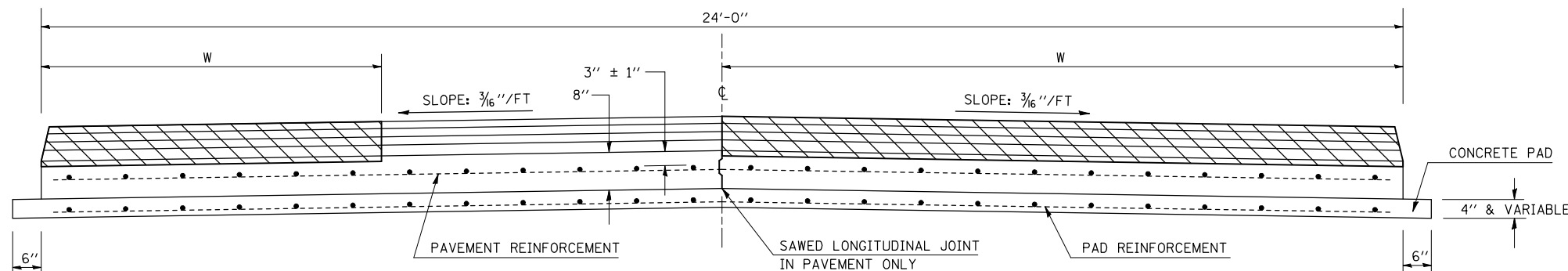
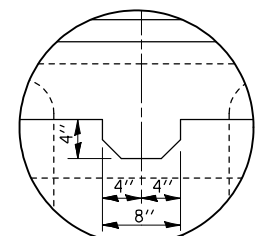
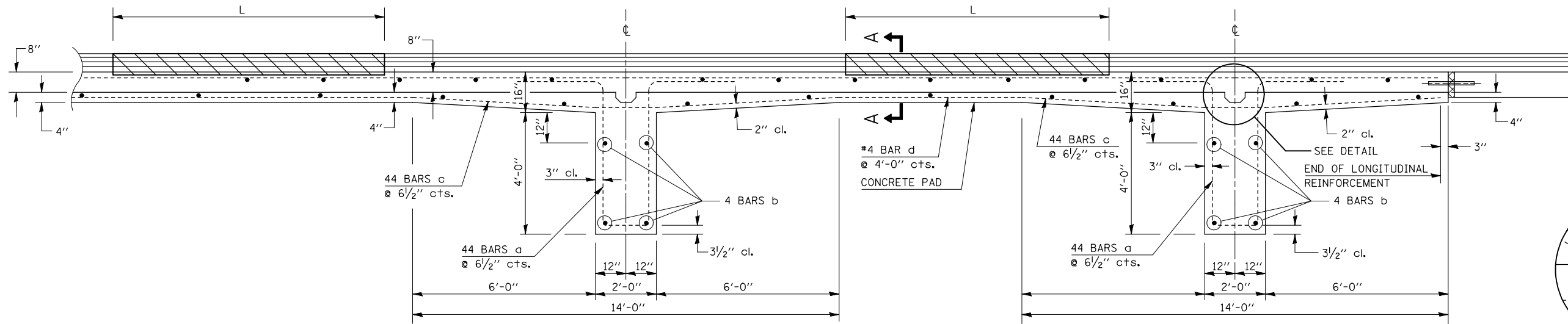
DETAIL NOTES:

PAVEMENT SHALL BE MILLED A MAXIMUM OF 3" INTO THE EXISTING CRC PAVEMENT. ANY LOOSE MATERIAL SHALL BE REMOVED BY COMPRESSED AIR.

THE WORK REQUIRED TO CONSTRUCT THE PARTIAL DEPTH PATCH SHALL BE IN ACCORDANCE WITH AND PAID FOR AS SPECIFIED IN THE SPECIAL PROVISIONS ENTITLED - PAVEMENT PATCHING (PARTIAL DEPTH).



SEE SCHEDULE OF QUANTITIES (SHEET 13) FOR LOCATIONS AND DIMENSIONS.



ILLINOIS DEPARTMENT OF TRANSPORTATION
DETAIL FOR PARTIAL DEPTH PATCHING AT LUGS
 F.A.I. ROUTE 74
 SECTION (20-1)RS-2
 DEWITT COUNTY

SCALE: NONE
 DATE: 03-10-08

DRAWN BY: CADD
 CHECKED BY:

PLOT DATE = 3/28/2008
 FILE NAME = c:\projects\4582285 (v8)\70475detail.dgn
 PLOT SCALE = 42.3525 / IN.
 USER NAME = collierb