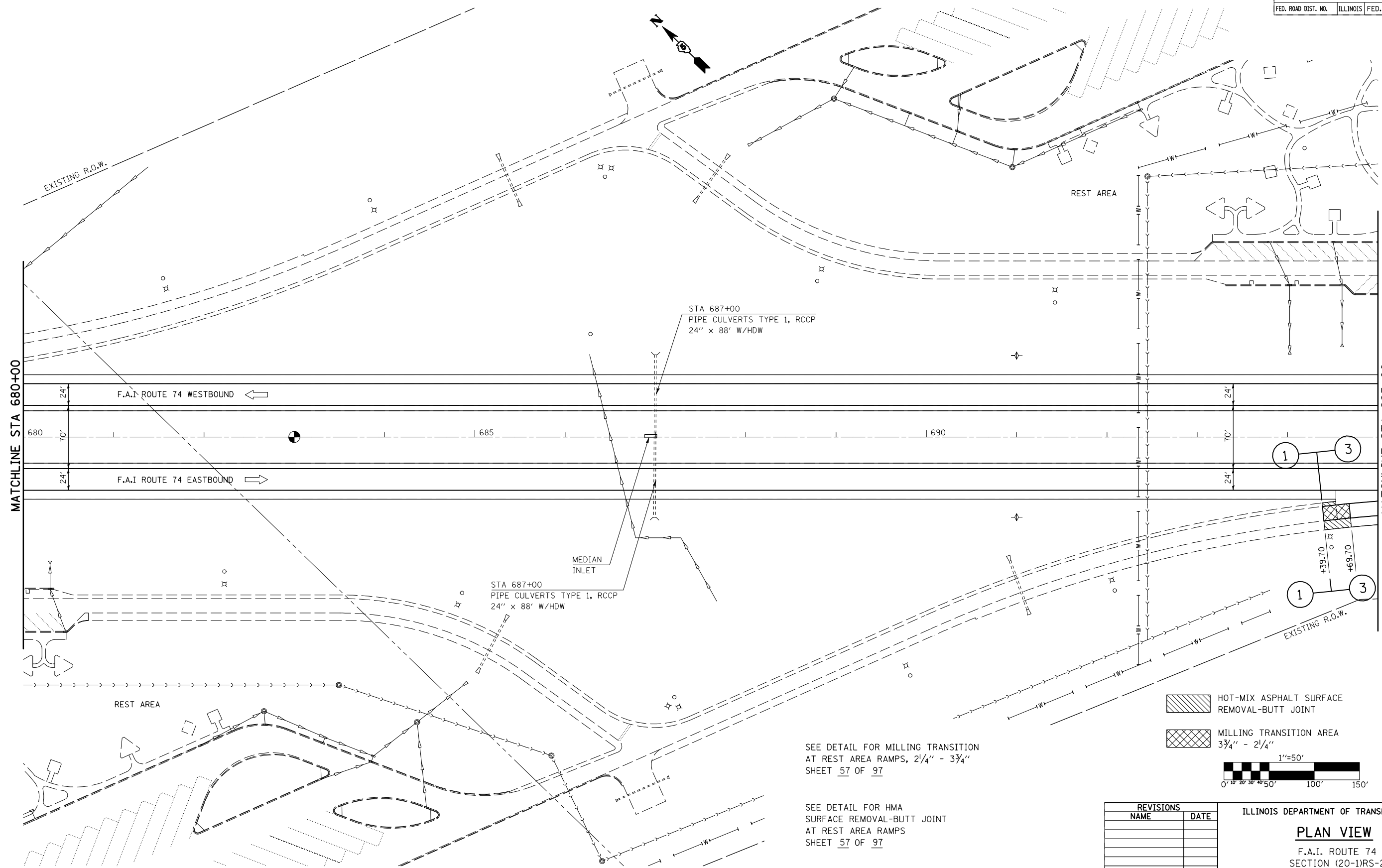


F.A.I. RTE.	SECTION	COUNTY	TOTAL SHEETS	SHEET NO.
74	(20-1)RS-2	DEWITT	97	33
STA. 680+00		TO STA. 695+00		
FED. ROAD DIST. NO.	ILLINOIS	FED. AID PROJECT		



MATCHLINE STA 680+00

MATCHLINE STA 695+00

F.A.I. ROUTE 74 WESTBOUND ←

F.A.I. ROUTE 74 EASTBOUND →

STA 687+00
PIPE CULVERTS TYPE 1, RCCP
24" x 88' W/HDW

STA 687+00
PIPE CULVERTS TYPE 1, RCCP
24" x 88' W/HDW

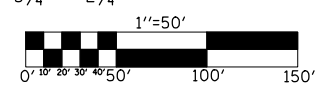
MEDIAN
INLET

REST AREA

REST AREA

HOT-MIX ASPHALT SURFACE
REMOVAL-BUTT JOINT

MILLING TRANSITION AREA
3 3/4" - 2 1/4"



SEE DETAIL FOR MILLING TRANSITION
AT REST AREA RAMPS, 2 1/4" - 3 3/4"
SHEET 57 OF 97

SEE DETAIL FOR HMA
SURFACE REMOVAL-BUTT JOINT
AT REST AREA RAMPS
SHEET 57 OF 97

REVISIONS	
NAME	DATE

ILLINOIS DEPARTMENT OF TRANSPORTATION
PLAN VIEW
F.A.I. ROUTE 74
SECTION (20-1)RS-2
DEWITT COUNTY

SCALE: VERT. 1"=50'
HORIZ. 1"=50'
DATE: 06/24/05
DRAWN BY: JRP
CHECKED BY:

PLOT DATE = 3/28/2008
FILE NAME = c:\projects\4582285 (v8)\reference\70475.dgn
PLOT SCALE = 1/8"=1'-0" / IN.
USER NAME = collierb