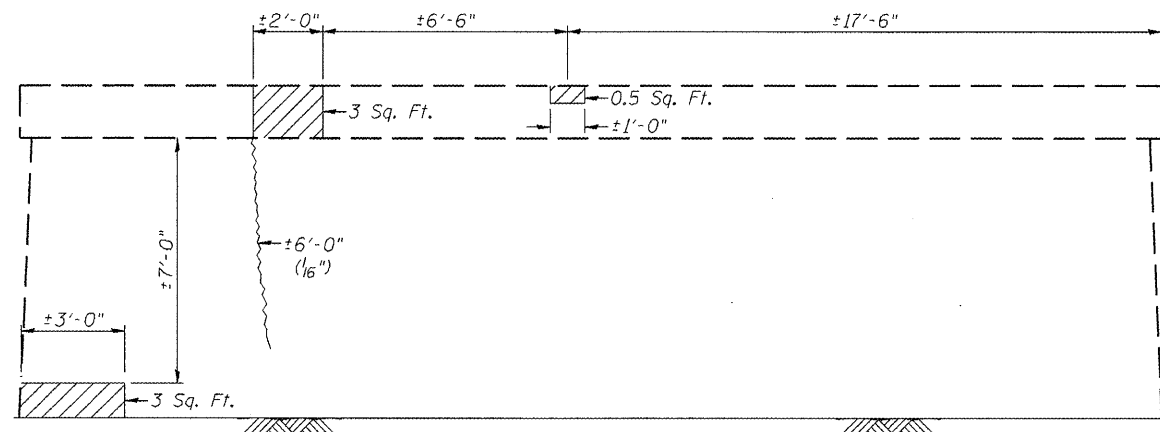
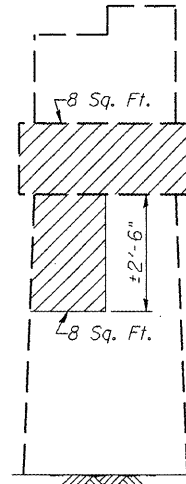


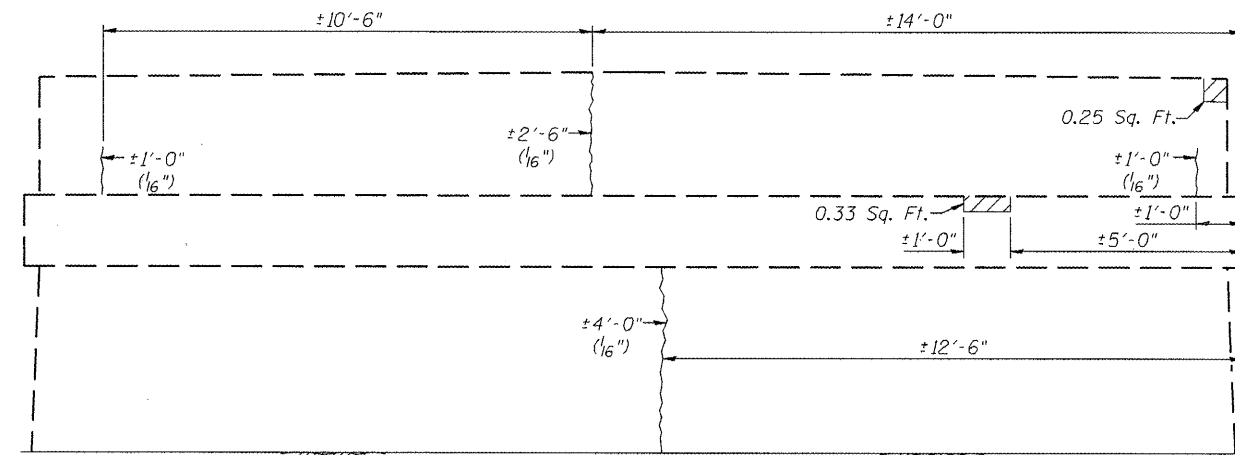
PIER 7
(EAST END)



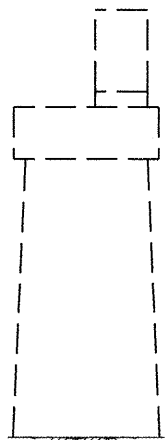
PIER 7 (NORTH SIDE)



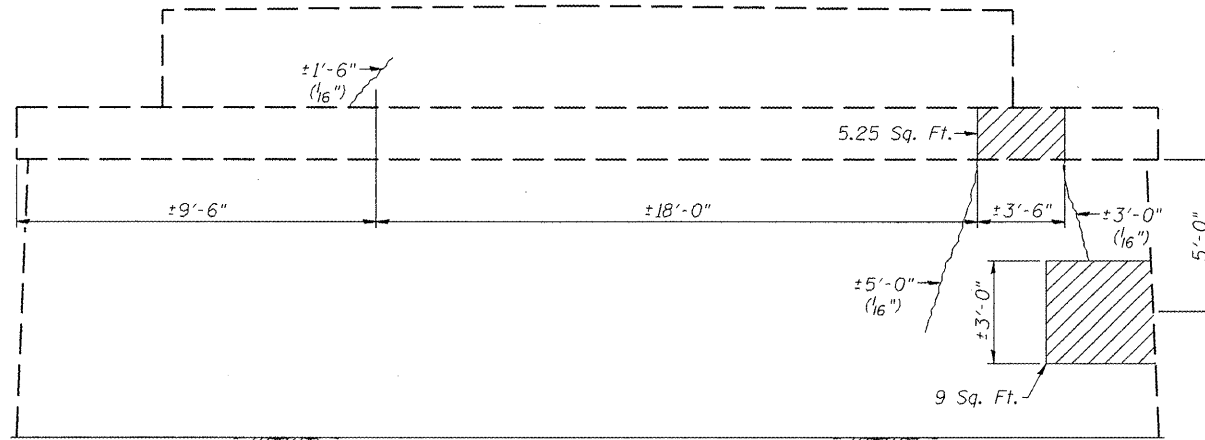
PIER 8
(EAST END)



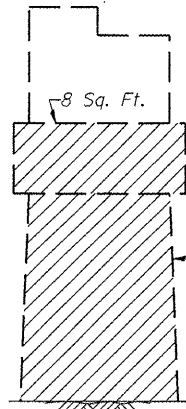
PIER 8 (NORTH SIDE)



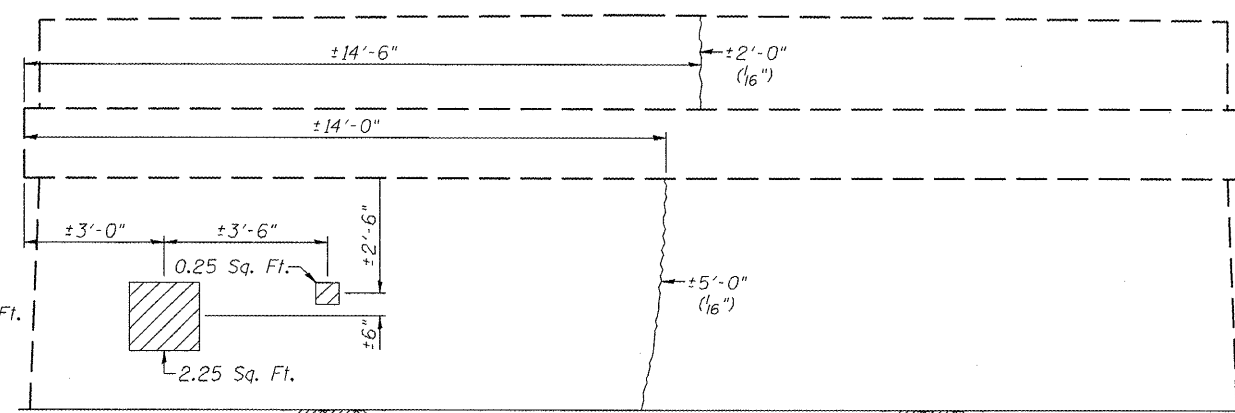
PIER 7
(WEST END)



PIER 7 (SOUTH SIDE)



PIER 8
(WEST END)



PIER 8 (SOUTH SIDE)

BILL OF MATERIAL

ITEM	UNIT	QUANTITY
Structural Repair of Concrete (Depth Equal to or Less Than 5")	Sq. Ft.	69
Epoxy Crack Injection	Foot	31

- LEGEND**
- Structural Repair of Concrete
(Depth Equal to or Less Than 5")
 - Epoxy Crack Injection

PIERS 7 & 8 REPAIR
F.A.S. ROUTE 744 (OLD IL 121)
OVER MACKINAW RIVER
SECTION 108B-I-2
TAZEWELL COUNTY
STATION 667+55.00
STRUCTURE NO. 090-0087