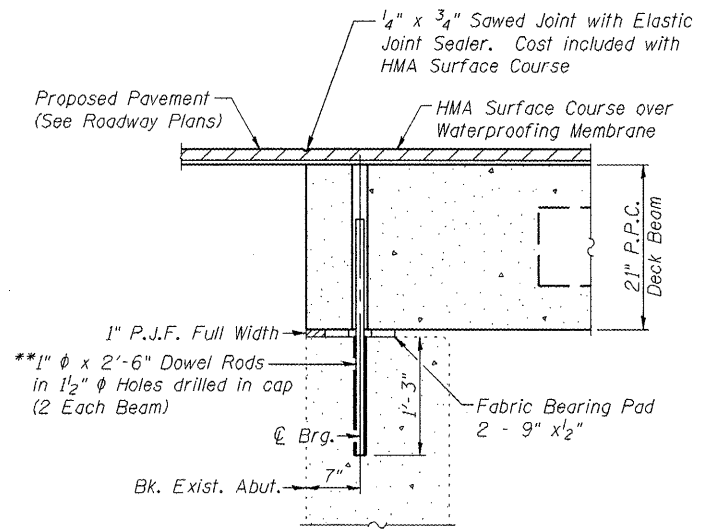


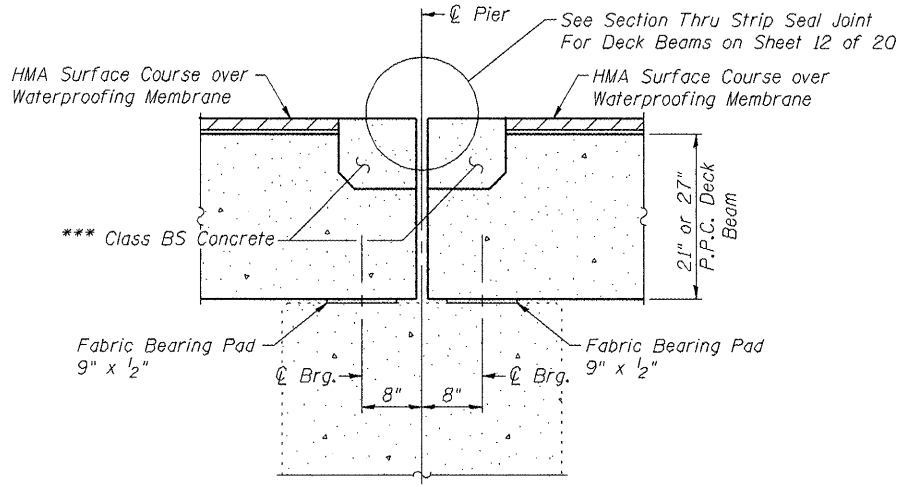
ROUTE NO.	SECTION	COUNTY	SHEET	SHEET
F.A.P. 744	108B-1-2	TAZEWELL	29	18
FED. ROAD DIST. NO. 7	ILLINOIS	FED. AID PROJECT		

SHEET NO. 11
20 SHEETS

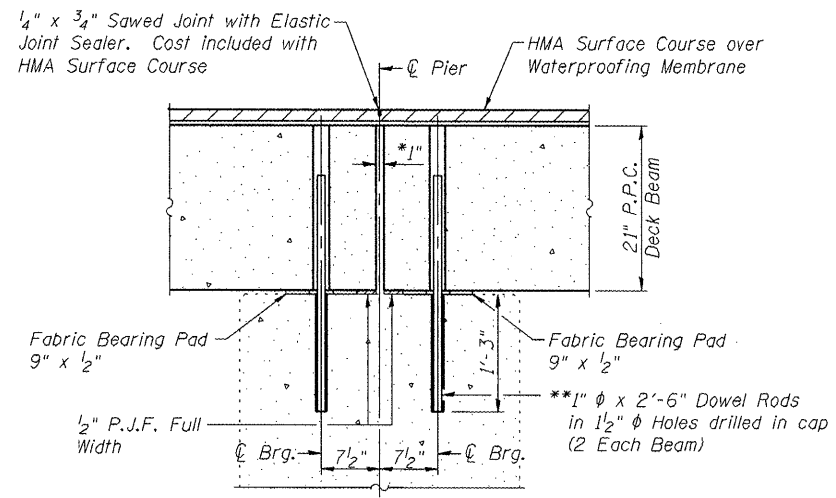
Contract # 68485



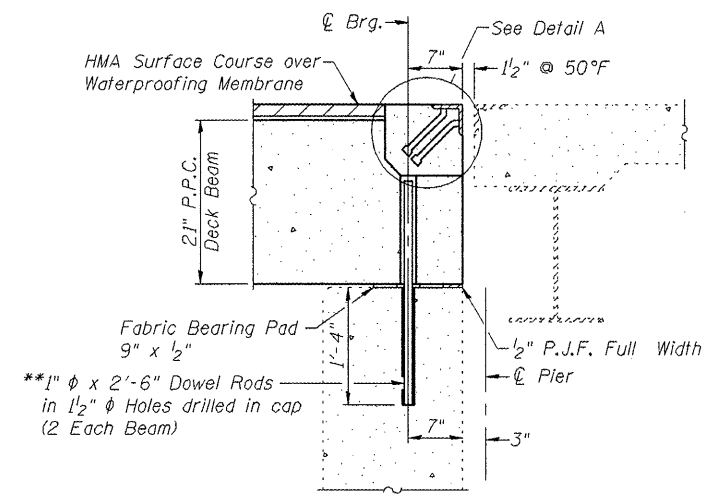
SECTION THRU NORTH ABUTMENT



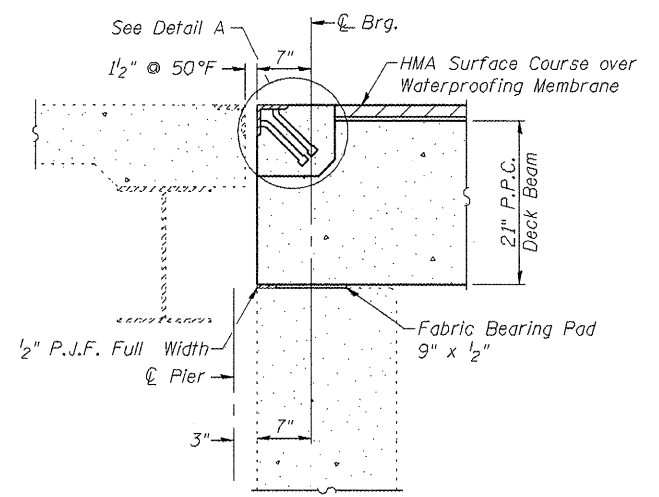
SECTION THRU PIERS 1, 3, 5, & 9



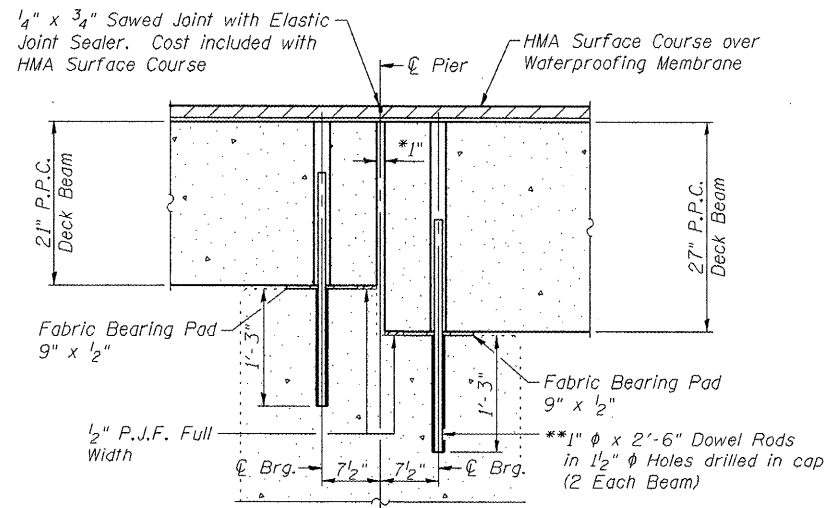
SECTION THRU PIERS 2 & 4



SECTION THRU PIER 6



SECTION THRU PIER 7

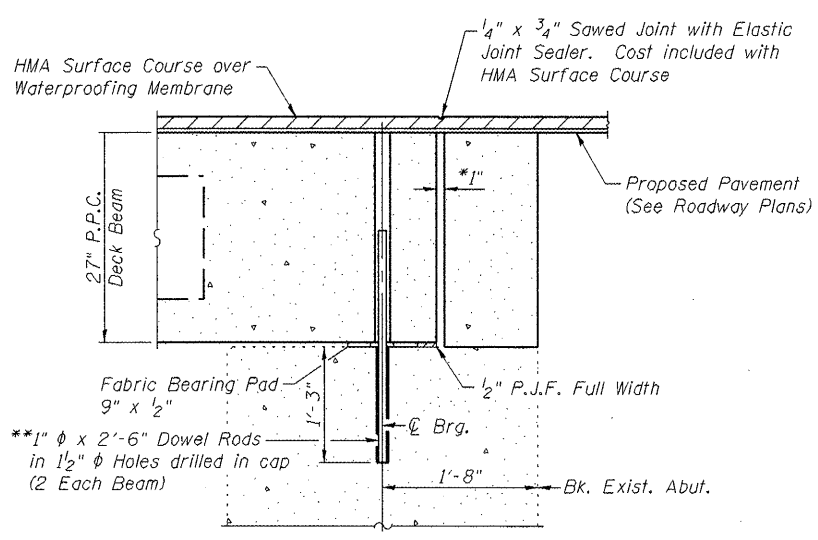


SECTION THRU PIER 8

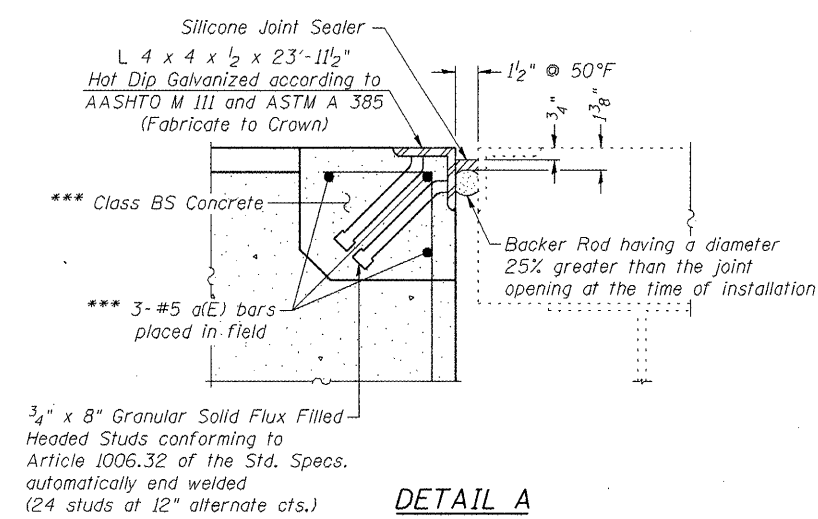
BAR LIST

(For information only)

Bar	No.	Size	Length	Shape
a(E)	30	#5	23'-8"	—



SECTION THRU SOUTH ABUTMENT



DETAIL A

- * 1" joint shall be filled with non-shrink grout. 1" dimension may vary to accommodate tolerance in beam lengths.
- ** After beams have been erected, holes shall be drilled into the substructure and anchor dowels placed. Dowel holes shall be filled with non-shrink grout to the top of beam and allowed to cure a minimum of 24 hours prior to grouting the shear keys.
- *** Cost of Class BS Concrete and reinforcement bars is included with P.P.C. Deck Beams

Note: Existing dowel rods at the piers and abutments shall be burned off flush with the top of the existing concrete, ground smooth, and sealed with epoxy. Cost included with Removal of Existing Superstructures.

BILL OF MATERIAL

ITEM	UNIT	QUANTITY
Silicone Joint Sealer, 1 1/2"	Foot	48
Preformed Joint Strip Seal	Foot	104
Furnishing and Erecting Structural Steel	Pound	615
Stud Shear Connectors	Each	48

SUPERSTRUCTURE DETAILS
F.A.S. ROUTE 744 (OLD IL121)
OVER MACKINAW RIVER
SECTION 108B-1-2
TAZEWELL COUNTY
STATION 667+55.00
STRUCTURE NO. 090-0087