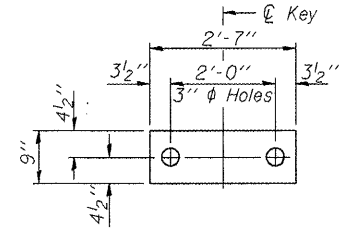
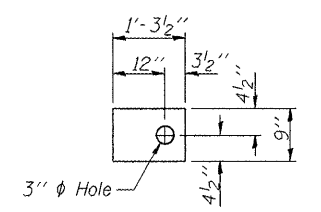


ROUTE NO.	SECTION	COUNTY	TOTAL SHEETS	SHEET	SHEET NO.
F.A.P. 744	108B-1-2	TAZEWELL	29	15	20 SHEETS
FED. ROAD DIST. NO. 7		ILLINOIS	FED. AID PROJECT-		

Contract # 68485



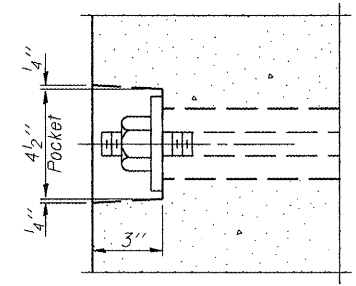
**FABRIC BEARING PAD**  
(Interior)



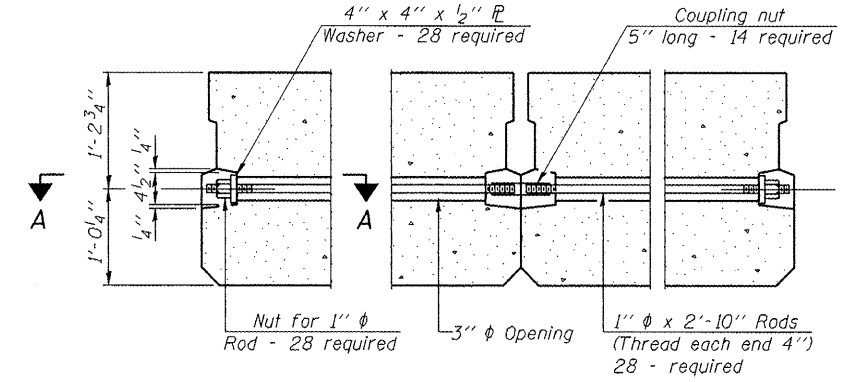
**FABRIC BEARING PAD**  
(Exterior)

**FIXED**

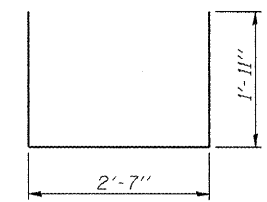
Note: Omit holes when using expansion bearings.



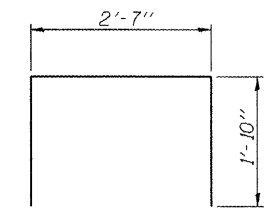
**SECTION A-A**



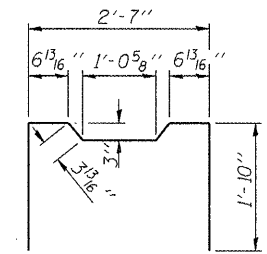
**TYPICAL TRANSVERSE TIE ASSEMBLY**



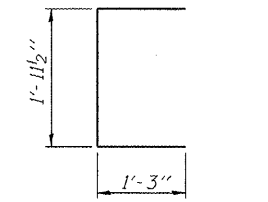
**BAR S(E)**



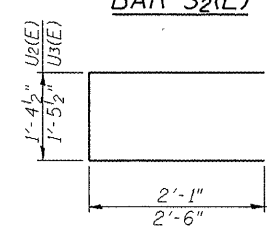
**BAR S1(E)**



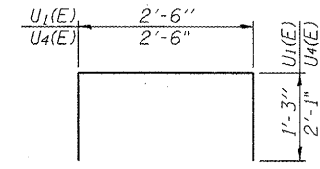
**BAR S2(E)**



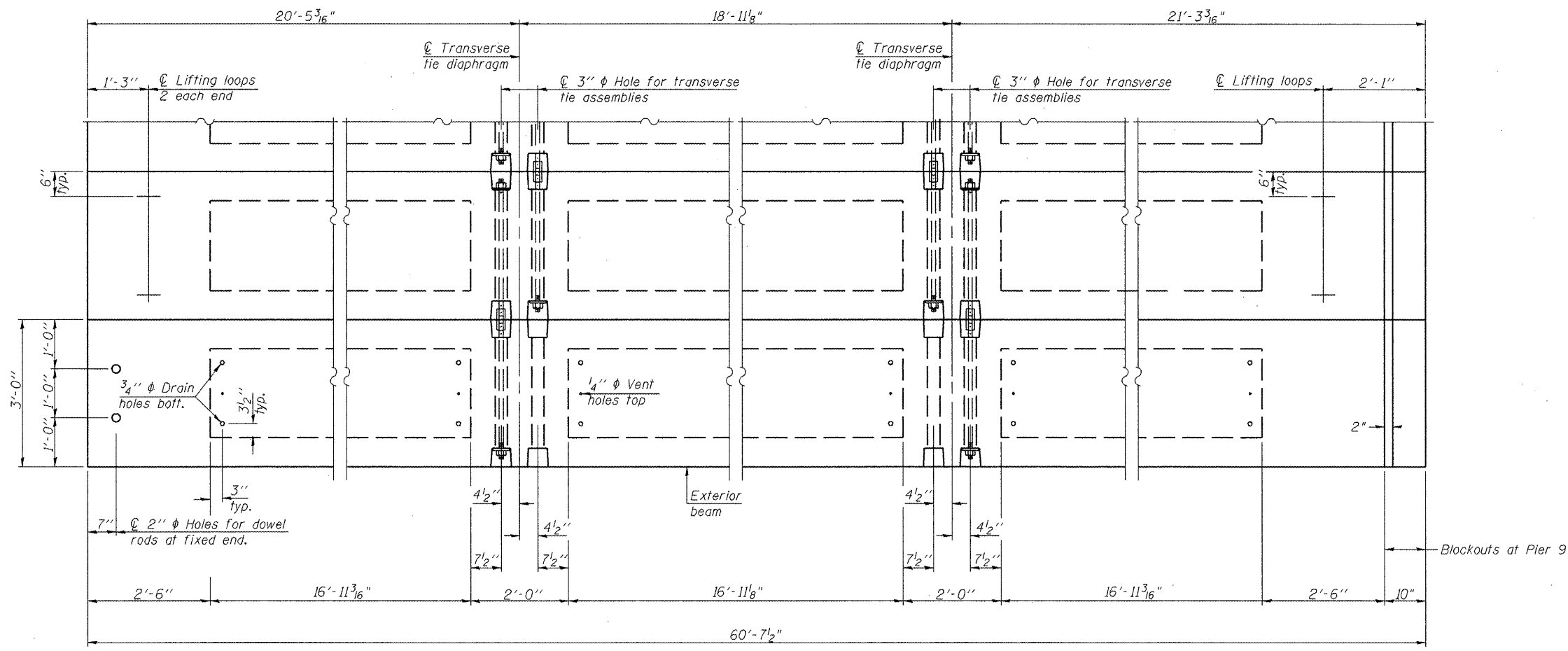
**BAR U(E)**



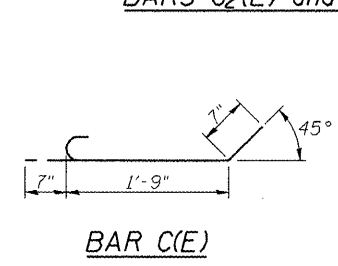
**BARS U2(E) and U3(E)**



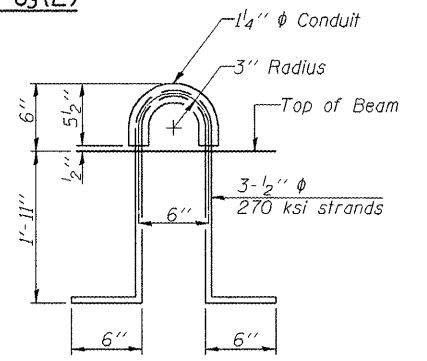
**BARS U1(E) and U4(E)**



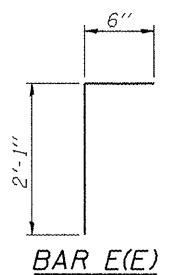
**PLAN VIEW**



**BAR C(E)**



**LIFTING LOOP DETAIL**



**BAR E(E)**

**BILL OF MATERIAL**

Precast Prestressed Conc. Deck Bms. (27" depth)	Sq. Ft.	1455
---	---------	------

**27 x 36 DECK BEAM DETAILS**  
**SPAN 9**  
**F.A.S. ROUTE 744 (OLD IL 121)**  
**OVER MACKINAW RIVER**  
**SECTION 108B-1-2**  
**TAZEWELL COUNTY**  
**STATION 667+55.00**  
**STRUCTURE NO. 090-0087**

Notes: Connect beams in pairs with the transverse tie configuration shown.  
The top surface of the beams shall be finished according to the IDOT Manual for Fabrication of Precast Prestressed Concrete Products.

**NOTES**

Prestressing steel shall be uncoated high strength, low relaxation 7-wire strand, Grade 270. The nominal diameter shall be 1/2" and the nominal cross-sectional area shall be 0.153 sq. in. The 1" rods in the transverse tie assembly shall be tightened to a snug fit and the threads set. Pockets on exterior faces of bridge shall be filled with grout after transverse tie assembly is in place.  
Reinforcement bars shall conform to ASTM A 706 (IL MOD), Grade 60. (See Special Provisions)  
Two 1/8" fabric adjusting shims of the dimensions of the exterior bearing pad shall be provided for each bearing pad location.  
A minimum 2 1/2" diameter lifting pin shall be used to engage the lifting loops during handling.  
Corrosion Inhibitor, per Article 1020.05(b)(12) and 1021.06 of the Standard Specifications, shall be used in the concrete for precast prestressed concrete deck beams.  
Compressive strength of prestressed concrete, f'c, shall be 6000 psi.  
Compressive strength of prestressed concrete at release, f'ci, shall be 5000 psi.