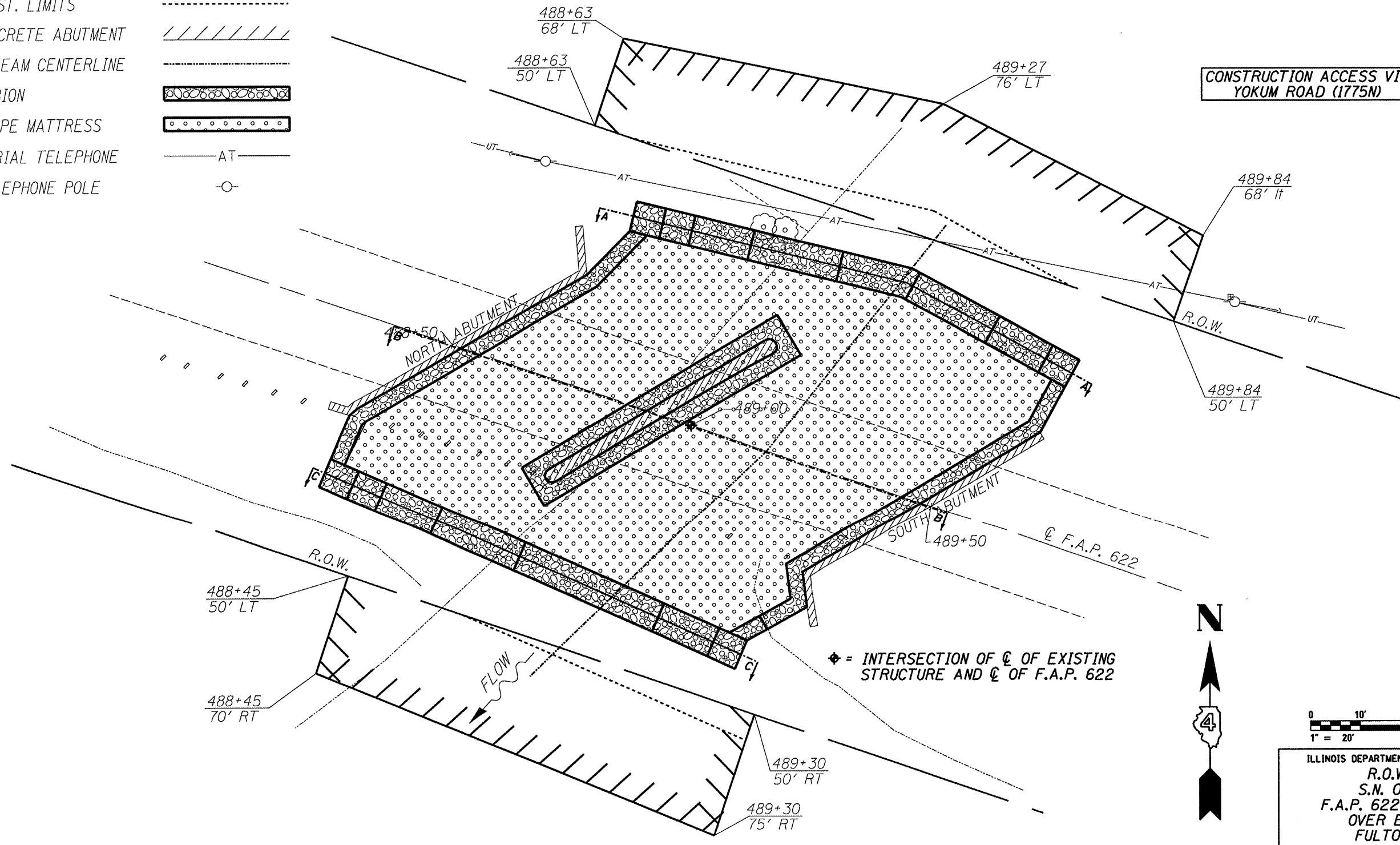


LEGEND

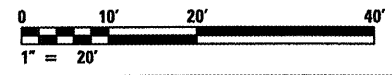
- EXIST. R.O.W. LINE
- TEMPORARY EASEMENT
- CONST. LIMITS
- CONCRETE ABUTMENT
- STREAM CENTERLINE
- GABION
- SLOPE MATTRESS
- AERIAL TELEPHONE —AT
- TELEPHONE POLE ○

ROUTE NO.	SECTION	COUNTY	TOTAL SHEETS	SHEET NO.
VAR	*	VAR	66	17
FED. ROAD DIST. NO. 4		ILLINOIS	FED. AID PROJECT	

*** D4 SCOUR MITIGATION 2006**



CONSTRUCTION ACCESS VIA
YOKUM ROAD (1775N)



ILLINOIS DEPARTMENT OF TRANSPORTATION
R.O.W. PLAN
S.N. 029-0027
F.A.P. 622 (IL. RTE. 97)
OVER BIG CREEK
FULTON COUNTY
SHEET 2 OF 8

SCALE: 1" = 20'