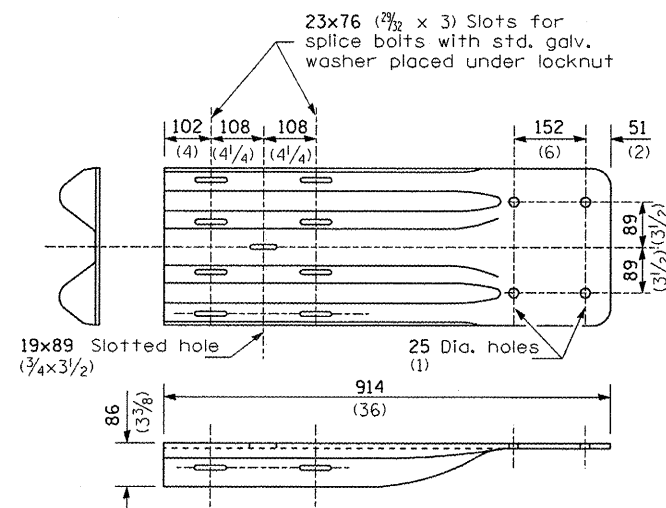
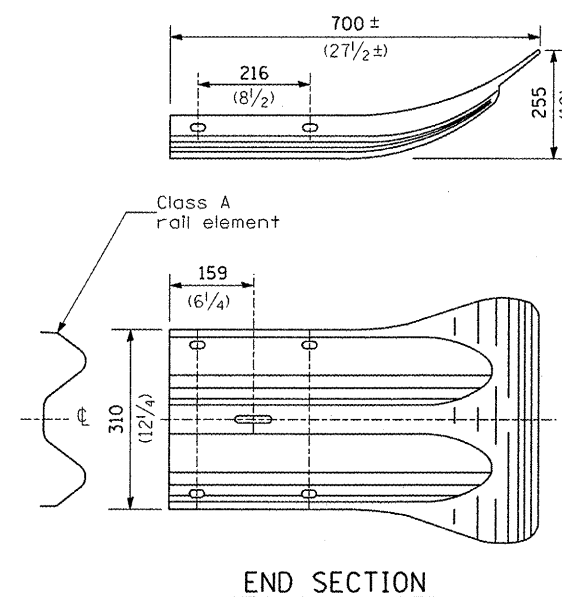
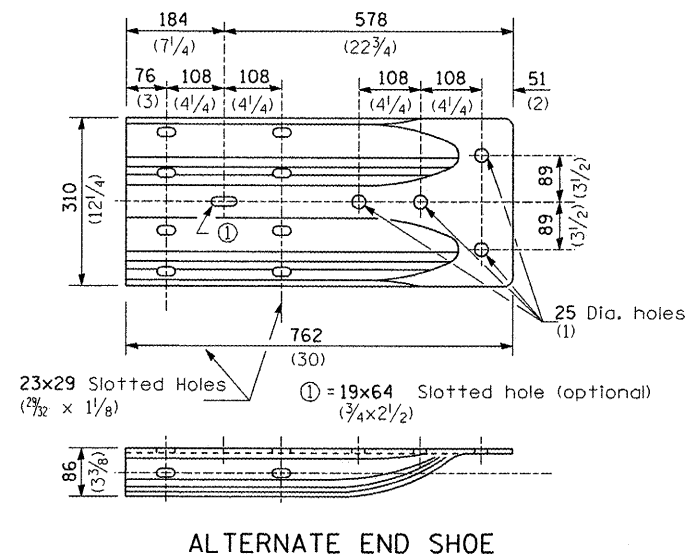


NOTE
Anchor plate T shall be used to attach cable assembly to guardrail when required on traffic barrier terminals.



NOTE
When end shoe is attached to a bridge parapet which has an expansion joint, the bolts shall be provided with a locknut or double nut and shall be tightened only to a point that will allow guardrail movement.
The standard end shoe shall be attached to the concrete with pre-drilled or self-drilling anchor bolts. The anchor cone shall be set flush with the surface of the concrete.
Externally threaded studs protruding from the surface of the concrete will not be permitted.



FILE NAME =	USER NAME = schwanberg	DESIGNED -	REVISED -
c:\projects\66812\66812-sht-details.dgn		DRAWN -	REVISED -
		CHECKED -	REVISED -
		DATE -	REVISED -

STATE OF ILLINOIS
DEPARTMENT OF TRANSPORTATION

PRE-MGS EFFECTIVE 4-1-06
STEEL PLATE BEAM GUARDRAIL
STANDARD 630001-06 (Sheet 3 of 4)

F.A. RTE.	SECTION	COUNTY	TOTAL SHEETS	SHEET NO.
VAR.	*	VAR.	36	18
FED. ROAD DIST. NO.			ILLINOIS FED. AID PROJECT	

D-3 HIGHWAY DAMAGE REPAIR 2009

CONTRACT NO. 66812