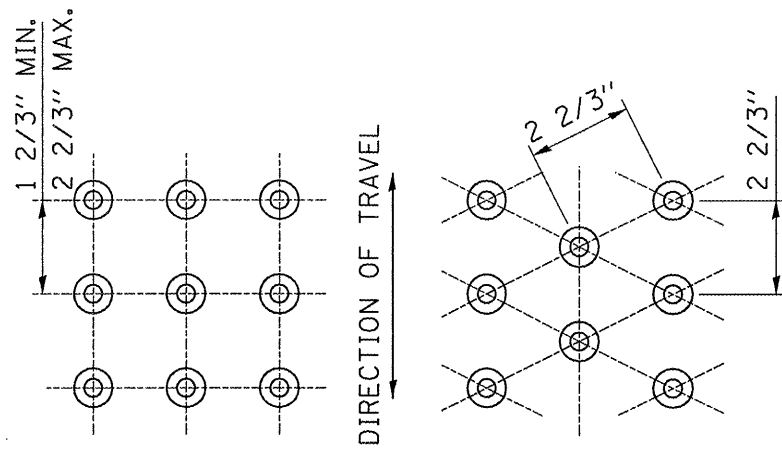
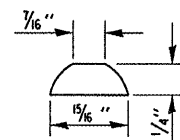


**PLAN**



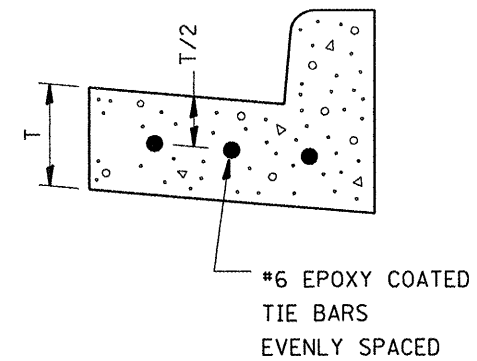
**SQUARE PATTERN  
(PARALLEL ALIGNMENT)**

**TRIANGULAR PATTERN**



**TRUNCATED DOME DETAIL**

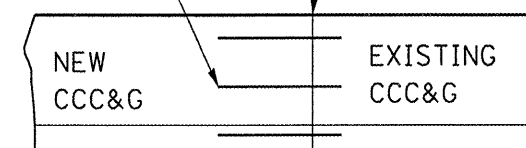
**DETECTABLE WARNING DETAIL**



**ELEVATION**

DRIL AND EPOXY GROUT #6 EPOXY COATED TIE BARS A MIN. OF 9" INTO EXISTING CCC&G

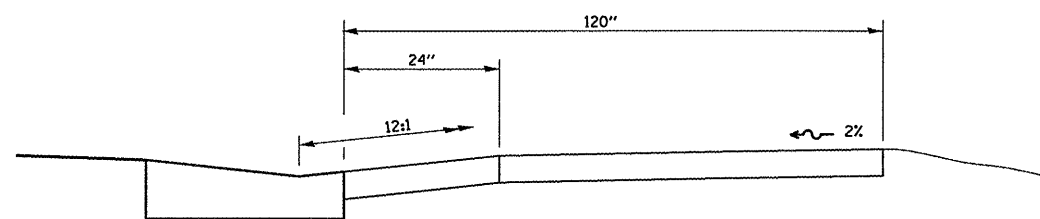
CONST. JT.



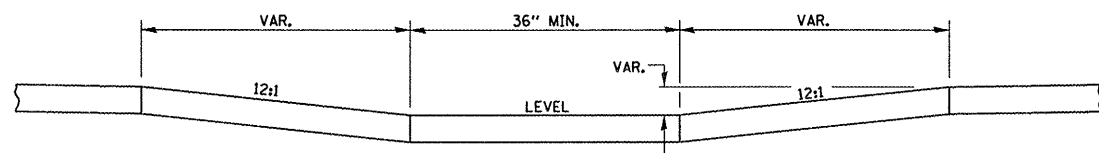
**PLAN**

**TIE BAR DETAIL  
FOR  
COMBINATION CONCRETE  
CURB AND GUTTER  
TYPE B-6.24**

TIE BARS SHALL NOT BE PAID FOR SEPARATELY BUT WILL BE INCLUDED IN THE CONTRACT UNIT PRICE FOR CC&G.



**SECTION A-A**



**SECTION B-B**

**NOTES:**

THIS DETAIL TO BE USED IN CONJUNCTION WITH STATE STANDARD 424001.

THE MAXIMUM ALLOWABLE CROSS SLOPE FOR SIDEWALK IS 2%.

THE MAXIMUM ALLOWABLE SIDEWALK GRADE IS 8%.

IF SPACE LIMITATIONS PROHIBIT THE USE OF THE 12:1 SLOPE, THEN SLOPES BETWEEN 10:1 AND 12:1 ARE PERMITTED FOR A MAXIMUM RISE OF 6". SLOPES 8:1 AND 10:1 ARE ALLOWED FOR A MAXIMUM RISE OF 3". SLOPES STEEPER THAN 8:1 ARE NOT PERMITTED.

THE DEPRESSED CURB IS NOT STANDARD. THE RISE IS 1/2" INSTEAD OF 1 1/2".

FILE NAME =	USER NAME = woodshankr1	DESIGNED - RLW	REVISED - ---
ci:\projects\vesters\limestone\66811\66811.dgn		DRAWN - RLW	REVISED - ---
		CHECKED - ---	REVISED - ---
		DATE - ---	REVISED - ---

**STATE OF ILLINOIS  
DEPARTMENT OF TRANSPORTATION**

**DETAILS**

SCALE: \_\_\_\_\_ SHEET NO. 1 OF 1 SHEETS STA. \_\_\_\_\_ TO STA. \_\_\_\_\_

F.A.I. RTE.	SECTION	COUNTY	TOTAL SHEETS	SHEET NO.
55	(53-6)RA-3	LIVINGSTON	6	6
CONTRACT NO. 66811				
FED. ROAD DIST. NO. - [ILLINOIS] FED. AID PROJECT				