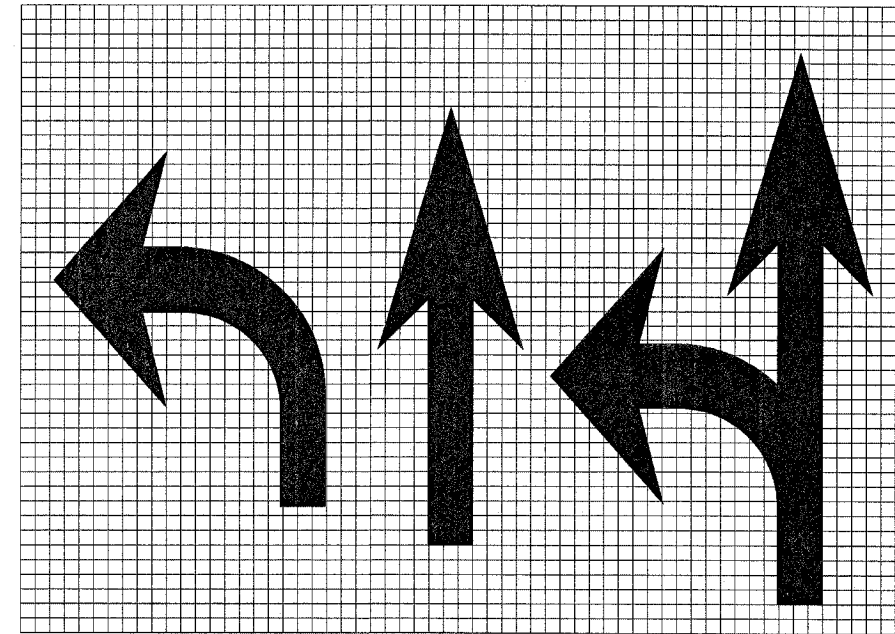


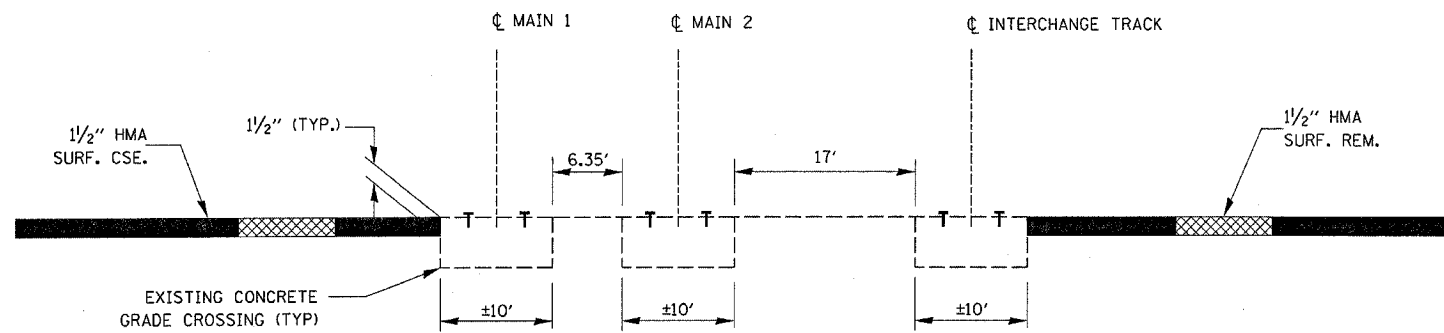
**PROPOSED RESURFACING DETAIL
AT NORFOLK SOUTHERN RR GRADE CROSSING**

IL 18 - NORFOLK SOUTHERN RAILWAY (DOT/AAR NO. 534 407 M)



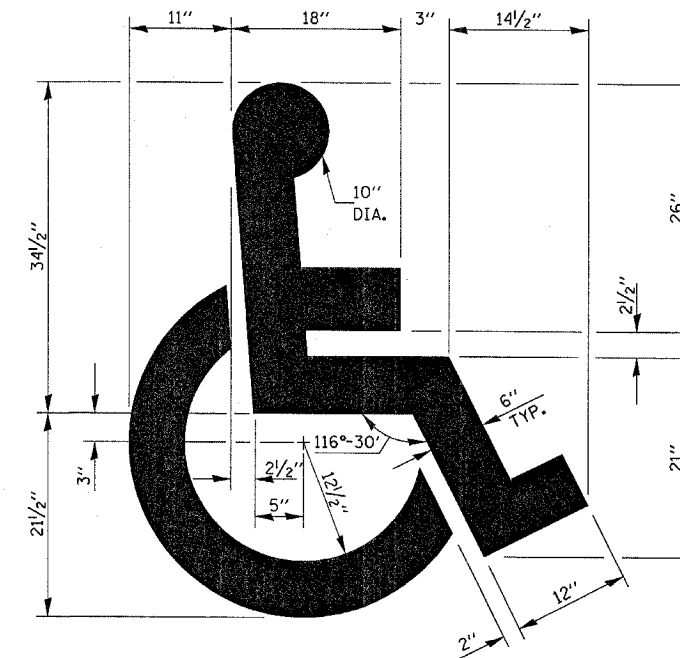
LEGEND HEIGHT	ARROW SIZE	a
6'	SMALL	2.9
8'	LARGE	3.8

ARROW GRID SCALE



**PROPOSED RESURFACING DETAIL
AT BNSF RR GRADE CROSSING**

IL 18 - BNSF RAILWAY (DOT/AAR NO. 004 481 J)



**TYPICAL DETAIL FOR
PAINTING HANDICAP MARKINGS**

FILE NAME =	USER NAME = carpenterdj	DESIGNED -	REVISED -	STATE OF ILLINOIS DEPARTMENT OF TRANSPORTATION	DETAILS				F.A.P. RTE.	SECTION	COUNTY	TOTAL SHEETS	SHEET NO.	
ca\projects\4366886\4366886-sht-details.dgn	PLOT SCALE = 50.0000' / IN.	DRAWN -	REVISED -		SCALE:	SHEET NO.	OF SHEETS	STA.	TO STA.	653	(8,29)RS-3	ASALLE	12	11
PLOT DATE = Mar 25, 2008 - 01:57:59 PM	DATE -	CHECKED -	REVISED -		CONTRACT NO. 66806									
		DATE -	REVISED -		FED. ROAD DIST. NO. ILLINOIS FED. AID PROJECT									