

F.A.P. RTE.	SECTION	COUNTY	TOTAL SHEETS	SHEET NO.
330	(1R-B)I-3	KANKAKEE	20	1

**INDEX OF SHEETS**

1. COVER SHEET
2. GENERAL NOTES
- 3-4. SUMMARY OF QUANTITIES
5. TYPICAL SECTIONS
6. SCHEDULES
7. GENERAL PLAN & ELEVATION
8. EXISTING DECK DETAILS
9. PROTECTIVE SHIELD DETAILS
10. DECK SLAB REPAIR DETAILS (FULL DEPTH)
11. EXISTING ABUTMENT DETAILS
12. PROPOSED DECK DETAILS
13. PROPOSED ABUT. DETAILS
14. STRUCTURAL REPAIR OF CONCRETE
15. EXPANSION JOINT DETAILS
16. BAR SPLICER ASSEMBLY DETAILS
17. CRACK AND JOINT SEALING AT SLOPE WALLS
18. TRAFFIC CONTROL STAGING
19. WIDTH RESTRICTION SIGNING
20. TYPICAL PAVEMENT MARKINGS

**STANDARDS**

- 000001-05 STANDARD SYMBOLS, ABBREVIATIONS AND PATTERNS
- 001001-01 AREAS OF REINFORCEMENT BARS
- 001006 DECIMAL OF AN INCH AND OF A FOOT
- 701101-01 OFF-ROAD OPERATIONS MULTILANE, 4.5 m (15') TO 600 mm (24") FROM PAVEMENT EDGE
- 701106-01 OFF-ROAD OPERATIONS, MULTILANE, MORE THAN 4.5 m (15') AWAY
- 701422-01 LANE CLOSURE, MULTILANE, FOR SPEEDS ≥ 45 MPH TO 55 MPH
- 701426-02 LANE CLOSURE, MULTILANE INTERMITTENT OR MOVING OPERATION, FOR SPEEDS ≥ 45 MPH
- 701901 TRAFFIC CONTROL DEVICES
- 781001-02 TYPICAL APPLICATIONS RAISED REFLECTIVE PAVEMENT MARKERS

MICROFILMED \_\_\_\_\_  
 REEL NUMBER \_\_\_\_\_  
 AWARDED \_\_\_\_\_  
 RESIDENT ENGINEER \_\_\_\_\_  
 AS BUILT CHANGES WERE MADE  
 ON THE FOLLOWING SHEETS \_\_\_\_\_

J.U.L.I.E.  
 JOINT UTILITY LOCATION INFORMATION FOR EXCAVATION  
 1-800-892-0123

DISTRICT 3 NO. (815) 434-6131

PROJECT ENGINEER: JOE KANNEL  
 UNIT CHIEF: RON WOODSHANK  
 TOWNSHIP: AROMA

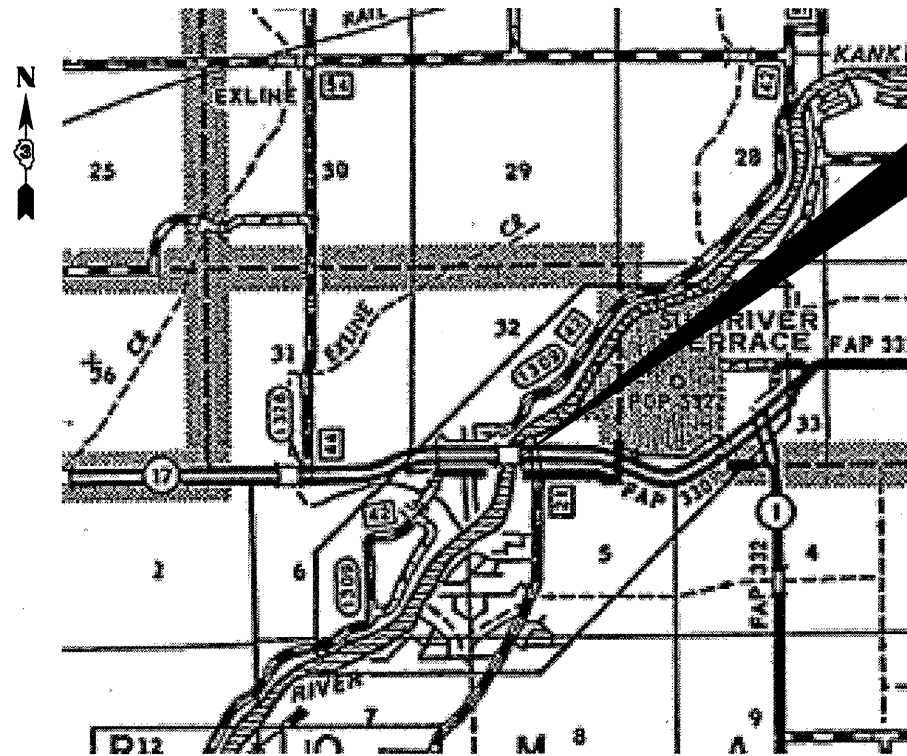
CONTRACT NO. 66713

STATE OF ILLINOIS  
 DEPARTMENT OF TRANSPORTATION  
 DIVISION OF HIGHWAYS

**PROPOSED  
 HIGHWAY PLANS**

FAP ROUTE 330 (IL 17)  
 SECTION (1R-B)I-3

KANKAKEE COUNTY  
 C-93-051-07  
 BRIDGE REPAIR



**LOCATION MAP  
 NOT TO SCALE**

POINT LOCATION

**PROJECT LOCATION**

SN 046-0039 (EB)  
 SN 046-0040 (WB)



FUNCTIONAL CLASSIFICATION  
 RURAL OTHER PRINCIPAL ARTERIAL  
 F.A.P. ROUTE 330 (IL 17)  
 2005 ADT = 13400  
 P.V. = 73.1%    M.U. = 20.9%    S.U. = 6.0%

STATE OF ILLINOIS  
 DEPARTMENT OF TRANSPORTATION  
 DIVISION OF HIGHWAYS

SUBMITTED 3/25 20 08

*George F. [Signature]*  
 DEPUTY DIRECTOR OF HIGHWAYS, REGION ENGINEER

May 9, 20 08  
*Eric E. [Signature]*  
 ENGINEER OF DESIGN AND ENVIRONMENT

May 9, 20 08  
*Christine M. [Signature]*  
 DIRECTOR OF HIGHWAYS, CHIEF ENGINEER

**PRINTED BY THE AUTHORITY  
 OF THE STATE OF ILLINOIS**

Mar 05, 2008 08:32 AM  
 c:\pcc\lects\cma\m09\cm30\defcal1.s.dgn

F.A.P. RTE.	SECTION	COUNTY	TOTAL SHEETS	SHEET NO.
330	(1R-B)I-3	KANKAKEE	20	2

GENERAL NOTES

PLAN DIMENSIONS AND DETAILS RELATIVE TO EXISTING PLANS ARE SUBJECT TO ROUTINE VARIATIONS. THE CONTRACTOR SHALL FIELD VERIFY EXISTING DIMENSIONS AND DETAILS AFFECTING NEW CONSTRUCTION AND MAKE NECESSARY APPROVED ADJUSTMENTS PRIOR TO CONSTRUCTION OR OREDERING OF MATERIALS. SUCH VARIATIONS SHALL NOT BE CAUSE FOR ADDITIONAL COMPENSATION FOR A CHANGE IN THE SCOPE OF THE WORK, HOWEVER, THE CONTRACTOR WILL BE PAID FOR THE QUANTITY ACTUALLY FURNISHED BASED UPON THE UNIT BID PRICE FOR THE WORK.

FOR STABILIZATION, ALL TYPE III BARRICADES SHALL REQUIRE A MINIMUM OF FOUR SAND BAGS PER BARRICADE.

THE CONTRACTOR SHALL BE RESPONSIBLE FOR PROTECTING UTILITY PROPERTY FROM CONSTRUCTION OPERATIONS AS OUTLINED IN ARTICLE 107.31 OF THE STANDARD SPECIFICATIONS. THE "JULIE" NUMBER IS 1-800-892-0123. A MINIMUM OF FORTY-EIGHT (48) HOURS ADVANCE NOTICE IS REQUIRED.

THE COST OF ANY SAW CUTS MADE TO COMPLETE THE WORK AS DESCRIBED IN PLAN DETAILS, UNLESS OTHERWISE NOTED SHALL NOT BE PAID FOR SEPARATELY BUT SHALL BE INCLUDED WITH THE VARIOUS PAY REMOVAL PAY ITEMS INVOLVED.

WHERE SECTION OR SUBSECTION MONUMENTS ARE ENCOUNTERED, THE ENGINEER SHALL BE NOTIFIED BEFORE SUCH MONUMENTS ARE REMOVED. THE CONTRACTOR SHALL PROTECT AND CAREFULLY PRESERVE ALL MONUMENTS UNTIL AN AUTHORIZED SURVEYOR OR AGENT HAS WITNESSED OR OTHERWISE REFERENCED THEIR LOCATION. THE CONTRACTOR SHALL BE RESPONSIBLE FOR HAVING AN AUTHORIZED SURVEYOR REESTABLISH ANY SECTION OR SUBSECTION MONUMENTS DESTROYED BY HIS OPERATIONS.

ABANDONED UNDERGROUND UTILITIES THAT CONFLICT WITH CONSTRUCTION SHALL BE DISPOSED OF OUTSIDE THE LIMITS OF THE RIGHT OF WAY ACCORDING TO ARTICLE 202.03 OF THE STANDARD SPECIFICATIONS AND AS DIRECTED BY THE ENGINEER. THIS WORK WILL NOT BE PAID FOR SEPARATELY BUT SHALL BE INCLUDED IN THE COST OF EARTH EXCAVATION.

REINFORCEMENT BARS SHALL CONFORM TO THE REQUIREMENTS OF ASTM A 706 GR 60 (IL MODIFIED). SEE SPECIAL PROVISIONS.

REINFORCEMENT BARS DESIGNATED (E) SHALL BE EPOXY COATED.

ALL STRUCTURAL STEEL SHALL BE AASHTO M 270 GRADE 50 EXCEPT EXPANSION JOINT PLATES AND ATTACHED BARS WHICH SHALL BE AASHTO M 270 GRADE 36.

ALL STRUCTURAL STEEL SHALL BE SHOP PAINTED WITH THE INORGANIC ZINC RICH PRIMER PER AASHTO M300, TYPE 1. COST SHALL BE INCLUDED IN THE UNIT BID PRICE FOR "PERFORMED JOINT STRIP SEAL, SPECIAL.

JOINT OPENINGS SHALL BE ADJUSTED ACCORDING TO ARTICLE 520.04 OF THE STANDARD SPECIFICATIONS WHEN THE DECK IS POURED AT AN AMBIENT TEMPERATURE OTHER THAN 50° F.

EXISTING REINFORCEMENT BARS EXTENDING INTO REMOVAL AREA SHALL BE CLEANED, STRAIGHTENED AND INCORPORATED INTO THE NEW CONSTRUCTION. ANY REINFORCEMENT BARS THAT ARE DAMAGED DURING CONCRETE REMOVAL SHALL BE REPLACED WITH AN APPROVED BAR SPLICER OR ANCHORAGE SYSTEM. COST INCLUDED WITH CONCRETE REMOVAL.

DATE: 3.25.08

PREPARED BY: R. J. Powell  
DISTRICT STUDIES & PLANS ENGINEER

EXAMINED BY: Herbert K. Jang  
DISTRICT CONSTRUCTION ENGINEER

Bruce Jackson  
DISTRICT MATERIALS ENGINEER  
Bruce Jackson  
DISTRICT OPERATIONS ENGINEER

REVISIONS	
NAME	DATE

ILLINOIS DEPARTMENT OF TRANSPORTATION  
**GENERAL NOTES**  
FAP 330 (IL 17) SECTION (1R-B)I-3  
KANKAKEE COUNTY  
STA. 228 + 10.95  
SN 046-0039 (EB) & SN 046-0040 (WB)

Mar 05, 2008 - 08:37:41 AM  
 c:\p\c\lectr\c\cmal\109\cm303\der\01\ls.dgn

F.A.P. RTE.	SECTION	COUNTY	TOTAL SHEETS	SHEET NO.
330	(1R-B)I-3	KANKAKEE	20	3

SUMMARY OF QUANTITIES

CONSTRUCTION CODE SFTY-2A

CODE NO.	ITEM	UNIT	TOTAL QUANTITY	RURAL 100% STATE	
				SN 046-0039 (EB) PPS# 0-00859-3003	SN 046-0040 (WB) PPS# 0-00859-3004
50102400	CONCRETE REMOVAL	CU YD	17	8.5	8.5
50157300	PROTECTIVE SHIELD	SQ YD	1334	667	667
50300225	CONCRETE STRUCTURES	CU YD	7.4	3.7	3.7
50300255	CONCRETE SUPERSTRUCTURE	CU YD	9.6	4.8	4.8
50300260	BRIDGE DECK GROOVING	SQ YD	2080	1040	1040
50800205	REINFORCEMENT BARS, EPOXY COATED	POUND	3200	1600	1600
50800515	BAR SPLICERS	EACH	64	32	32
52000110	PREFORMED JOINT STRIP SEAL	FOOT	148	74	74
59300100	CONTROLLED LOW-STRENGTH MATERIAL	CU YD	9	4.5	4.5
67100100	MOBILIZATION	L SUM	1	0.5	0.5
70100315	TRAFFIC CONTROL AND PROTECTION, STANDARD 701422	EACH	2	1	1
70103815	TRAFFIC CONTROL SURVEILLANCE	CAL DA	30	15	15

Mar 27, 2008 - 07:40:00 AM  
c:\pco\lect\5\ema\109\cm303\der\c11s.dgn

REVISIONS	
NAME	DATE

ILLINOIS DEPARTMENT OF TRANSPORTATION  
**SUMMARY OF QUANTITIES**  
 FAP 330 (IL 17) SECTION (1R-B)I-3  
 KANKAKEE COUNTY  
 STA. 228+10.95  
 SN 046-0039 (EB) & SN 046-0040 (WB)

F.A.P. RTE.	SECTION	COUNTY	TOTAL SHEETS	SHEET NO.
330	(1R-B)I-3	KANKAKEE	20	4

SUMMARY OF QUANTITIES

CONSTRUCTION CODE SFTY-2A

CODE NO.	ITEM	UNIT	TOTAL QUANTITY	RURAL 100% STATE	
				SN 046-0039 (EB) PPS# 0-00859-3003	SN 046-0040 (WB) PPS# 0-00859-3004
70300220	TEMPORARY PAVEMENT MARKING - LINE 4"	FOOT	8104	4052	4052
70301000	WORK ZONE PAVEMENT MARKING REMOVAL	SQ FT	2676	1338	1338
* 78008210	POLYUREA PAVEMENT MARKING TYPE I - LINE 4"	FOOT	5312	2656	2656
* 78008230	POLYUREA PAVEMENT MARKING TYPE I - LINE 6"	FOOT	1036	518	518
* 78100105	RAISED REFLECTIVE PAVEMENT MARKER (BRIDGE)	EACH	16	8	8
78300100	PAVEMENT MARKING REMOVAL	SQ FT	2116	1058	1058
X0325305	STRUCTURAL REPAIR OF CONCRETE (DEPTH EQUAL TO OR LESS THAN 5 INCHES)	SQ FT	1176	596	580
* X7200201	WIDTH RESTRICTION SIGNING	L SUM	1	0.5	0.5
Z0006100	BRIDGE DECK LATEX CONCRETE OVERLAY	SQ YD	2228	1114	1114
Z0006150	BRIDGE DECK HYDRO-SCARIFICATION	SQ YD	2228	1114	1114
Z0016001	DECK SLAB REPAIR (FULL DEPTH, TYPE I)	SQ YD	200	100	100
Z0032470	JOINT SEALER	FOOT	470	235	235

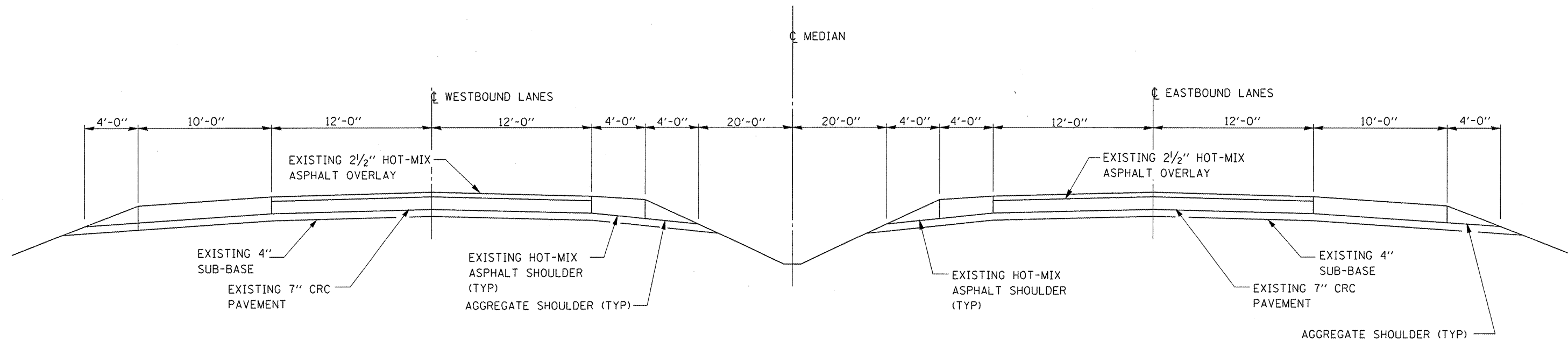
\* SPECIALTY ITEM

REVISIONS	
NAME	DATE

ILLINOIS DEPARTMENT OF TRANSPORTATION  
**SUMMARY OF QUANTITIES**  
 FAP 330 (IL 17) SECTION (1R-B)I-3  
 KANKAKEE COUNTY  
 STA. 228+10.95  
 SN 046-0039 (EB) & SN 046-0040 (WB)

Mar 27, 2008 - 08:00:47 AM  
 c:\pro\lects\cma\in09\cm303\def\011s.dgn

F.A.P. RTE.	SECTION	COUNTY	TOTAL SHEETS	SHEET NO.
330	(1R-B)I-3	KANKAKEE	20	5



**TYPICAL SECTION  
IL 17  
LOOKING EAST**

Mar 05, 2008 - 08:38:09 AM  
 c:\projects\cm303\cm303\detail\is.dgn

REVISIONS	
NAME	DATE

ILLINOIS DEPARTMENT OF TRANSPORTATION

**TYPICAL SECTIONS**

FAP 330 (IL 17) SECTION (1R-B)I-3  
 KANKAKEE COUNTY  
 STA. 228+10.95  
 SN 046-0039 (EB) & SN 046-0040 (WB)

F.A.P. RTE.	SECTION	COUNTY	TOTAL SHEETS	SHEET NO.
330	(1R-B)I-3	KANKAKEE	20	6

SCHEDULE				
LOCATION	BRIDGE DECK HYDRO SCARIFICATION	BRIDGE DECK LATEX CONCRETE OVERLAY	BRIDGE DECK GROOVING	PROTECTIVE SHIELD
	SQ YD	SQ YD	SQ YD	SQ YD
SN 046-0039 (EB)				
STAGE I	594	557	520	400
STAGE II	520	557	520	267
SUBTOTAL	1114	1114	1040	667
SN 046-0040 (WB)				
STAGE I	594	557	520	400
STAGE II	520	557	520	267
SUBTOTAL	1114	1114	1040	667
TOTAL	2228	2228	2080	1334

SCHEDULE				
LOCATION	CONCRETE REMOVAL	CONCRETE SUPERSTRUCTURE	CONCRETE STRUCTURE	PREFORMED JOINT STRIP SEAL,
	CU YD	CU YD	CU YD	FEET
SN 046-0039 (EB)				
STAGE I	4.5	2.4	1.8	37
STAGE II	4.0	2.4	1.8	37
SUBTOTAL	8.5	4.8	3.7	74
SN 046-0040 (WB)				
STAGE I	4.5	2.4	1.8	37
STAGE II	4.0	2.4	1.8	37
SUBTOTAL	8.5	4.8	3.7	74
TOTAL	17.0	9.6	7.4	148

SCHEDULE	
LOCATION	STRUCTURAL REPAIR OF CONCRETE (DEPTH EQUAL TO OR LESS THEN 5")
	SQ FT
SN 046-0039 (EB)	
EAST ABUT.	48
WEST ABUT.	46
N. CURB	251
S. CURB	251
SUBTOTAL	596
SN 046-0040 (WB)	
EAST ABUT.	39
WEST ABUT.	39
N. CURB	251
S. CURB	251
SUBTOTAL	580
TOTAL	1176

SCHEDULE						
LOCATION	PAVEMENT MARKING REMOVAL	TEMPORARY PAVEMENT MARKING LINE 4"	WORK ZONE PAVEMENT MARKING REMOVAL	POLYUREA PAVEMENT MARKING TYPE 1 4"	POLYUREA PAVEMENT MARKING TYPE 1 6"	RAISED REFLECTIVE PAVEMENT MARKER (BRIDGE)
	SQ FT	FEET	SQ FT	FEET	FEET	EACH
SN 046-0039 (EB)						
STAGE I	529	2026	669	1328.0		
STAGE II	529	2026	669	1328	518	8
SUBTOTAL	1058	4052	1338	2656	518	8
SN 046-0040 (WB)						
STAGE I	529	2026	669	1328		
STAGE II	529	2026	669	1328	518	8
SUBTOTAL	1058	4052	1338	2656	518	8
TOTAL	2116	8104	2676	5312	1036	16

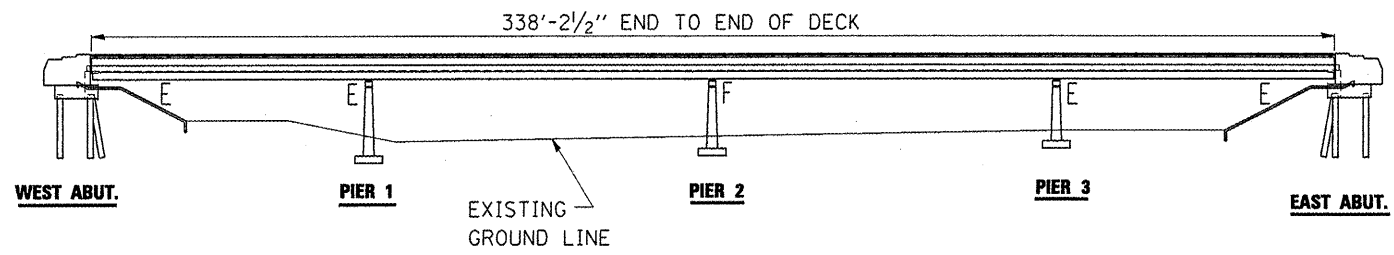
SCHEDULE		
LOCATION	CONTROLLED LOW-STRENGTH MATERIAL	JOINT SEALER
	CU YD	FOOT
WEST ABUTMENT	5	260
EAST ABUTMENT	4	210
TOTAL	9	470

REVISIONS	
NAME	DATE

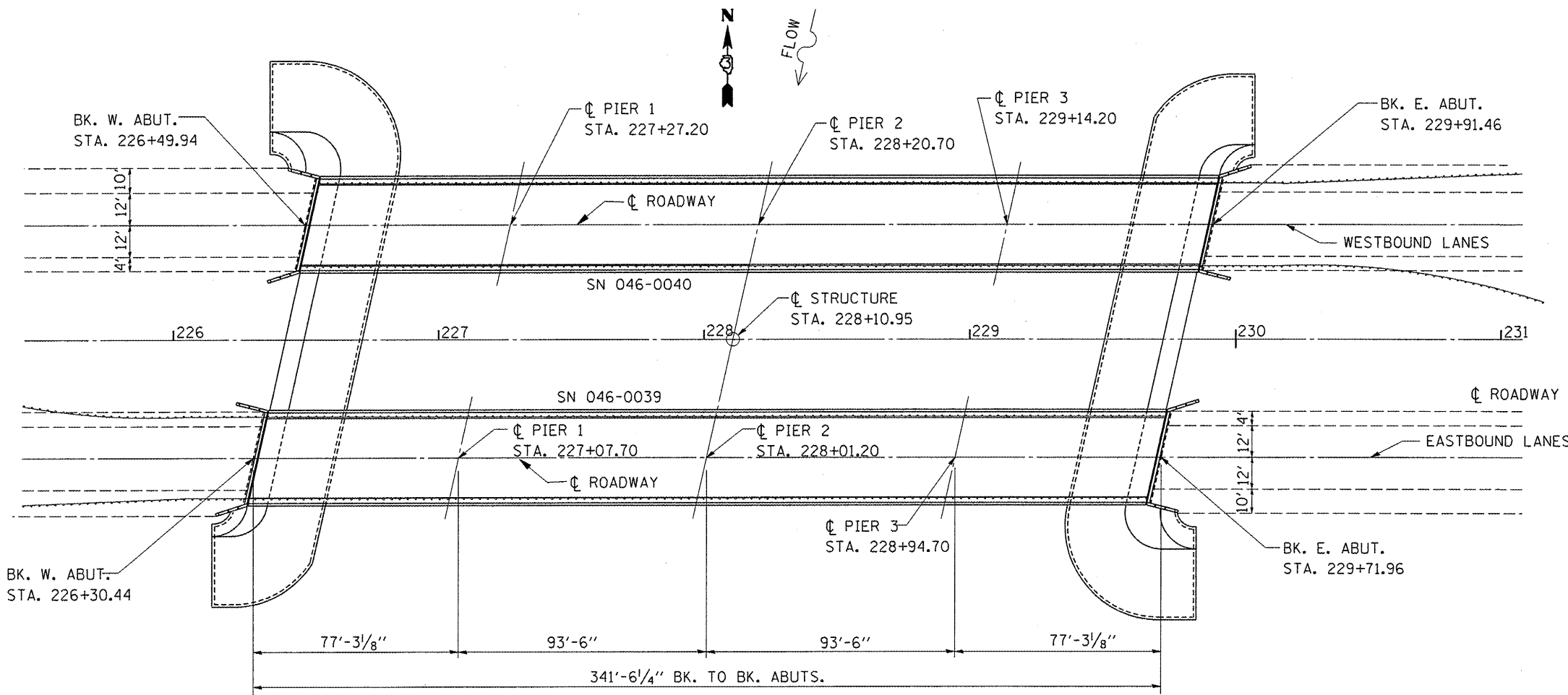
ILLINOIS DEPARTMENT OF TRANSPORTATION  
**SCHEDULES**  
 FAP 330 (IL 17) SECTION (1R-B)I-3  
 KANKAKEE COUNTY  
 STA. 228 + 10.95  
 SN 046-0039 (EB) & SN 046-0040 (WB)

Mar 05, 2008 - 08:38:17 AM  
 c:\p\proj\sect\sl\cma\fn09\cm303\def\al1.s.dgn

F.A.P. RTE.	SECTION	COUNTY	TOTAL SHEETS	SHEET NO.
330	(1R-B)I-3	KANKAKEE	20	7



**ELEVATION**



**PLAN**

Mar 05, 2008 - 08:38:26 AM  
 c:\pco\lectis\cma\trn99\cm30\over\11s.dgn

REVISIONS	
NAME	DATE

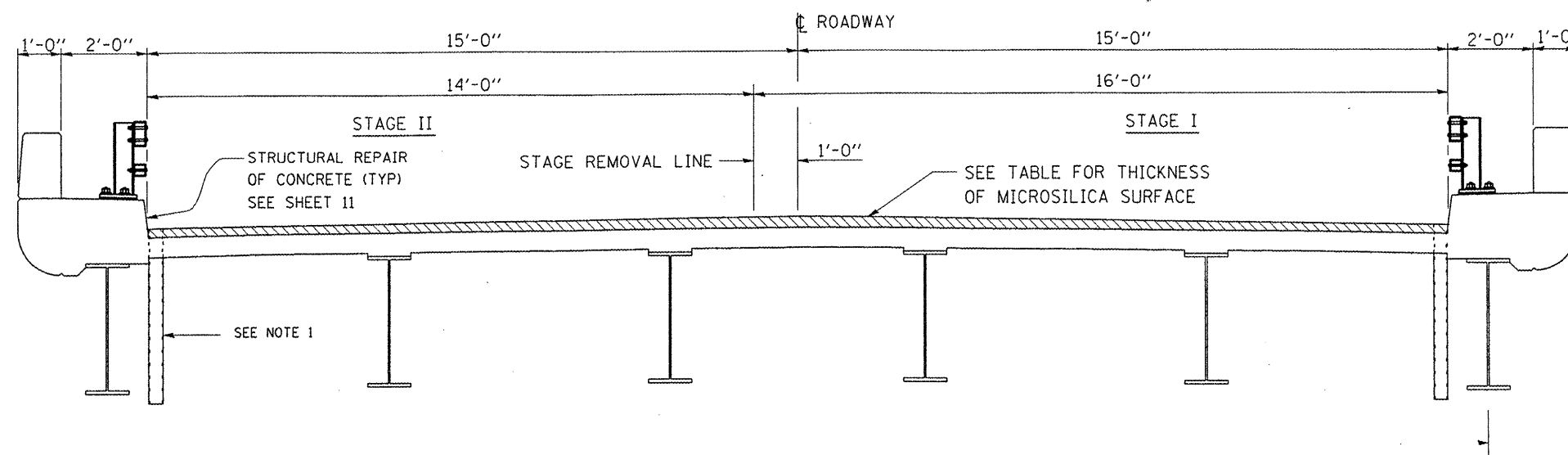
ILLINOIS DEPARTMENT OF TRANSPORTATION  
**GENERAL PLAN & ELEVATION**  
 FAP 330 (IL 17) SECTION (1R-B)I-3  
 KANKAKEE COUNTY  
 STA. 228+10.95  
 SN 046-0039 (EB) & SN 046-0040 (WB)

F.A.P. RTE.	SECTION	COUNTY	TOTAL SHEETS	SHEET NO.
330	(1R-B)1-3	KANKAKEE	20	8

**MICROSILICA SURFACE**

DISTANCE FROM $\phi$	THICKNESS
0	3.41"
1'	3.23"
2'	3.06"
3'	2.90"
4'	2.75"
5'	2.67"
6'	2.59"
7'	2.53"
8'	2.51"
9'	2.50"
10'	2.52"
11'	2.57"
12'	2.65"
13'	2.70"
14'	2.78"
15'	2.85"

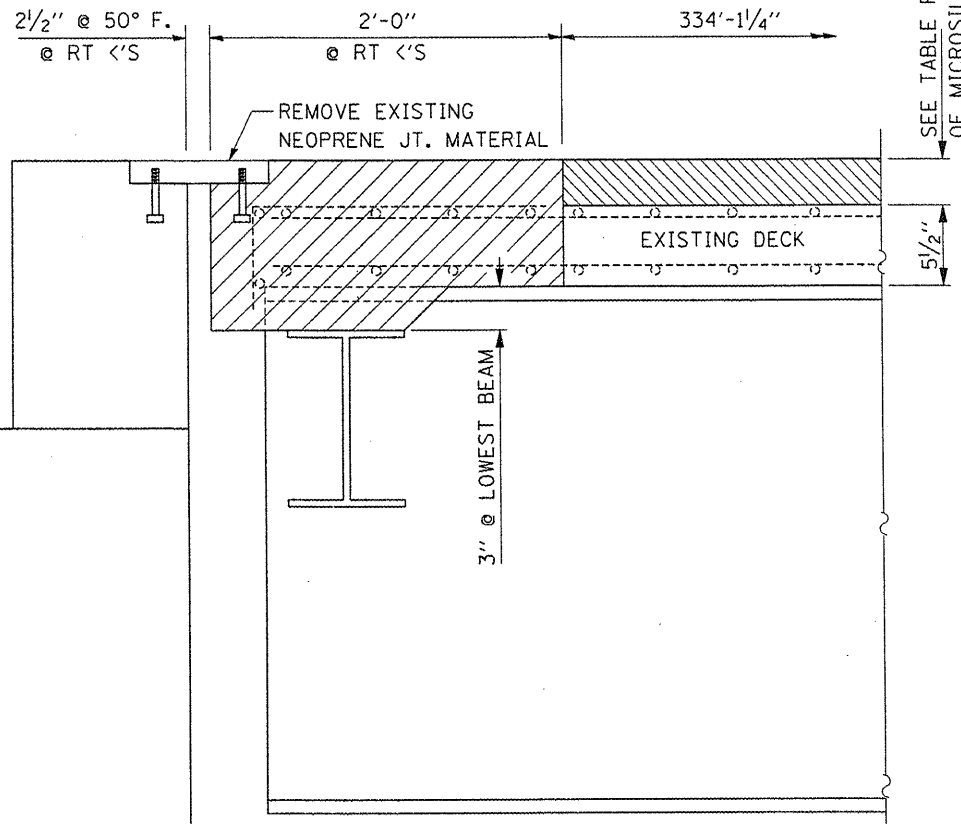
FOR INFORMATION ONLY  
SEE SHEET 10 OF 20  
FOR LIMIT OF REMOVAL



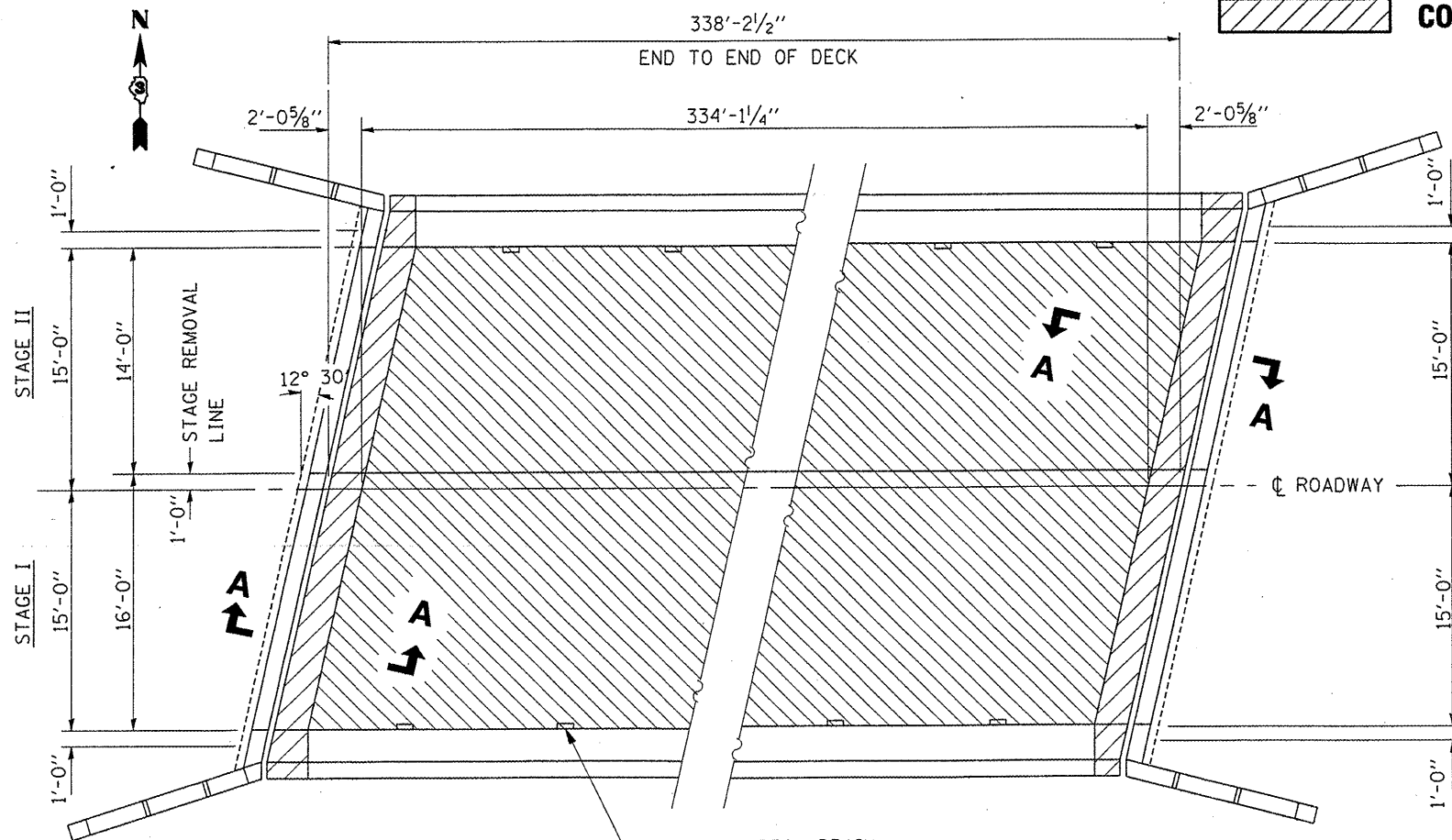
**CROSS SECTION  
LOOKING EAST**

NOTE 1 EXISTING DECK DRAINS ARE TO REMAIN IN PLACE (TYP)

- BRIDGE DECK HYDRO-SCARIFICATION
- CONCRETE REMOVAL



**SECTION A-A**



**PLAN AT ABUTS.**

NOTE: THE CONTRACTOR SHALL MONITOR THE BRIDGE DECK HYDRO-SCARIFICATION OPERATIONS TO VERIFY ALL EXISTING MICROSILICA SURFACE IS BEING REMOVED.

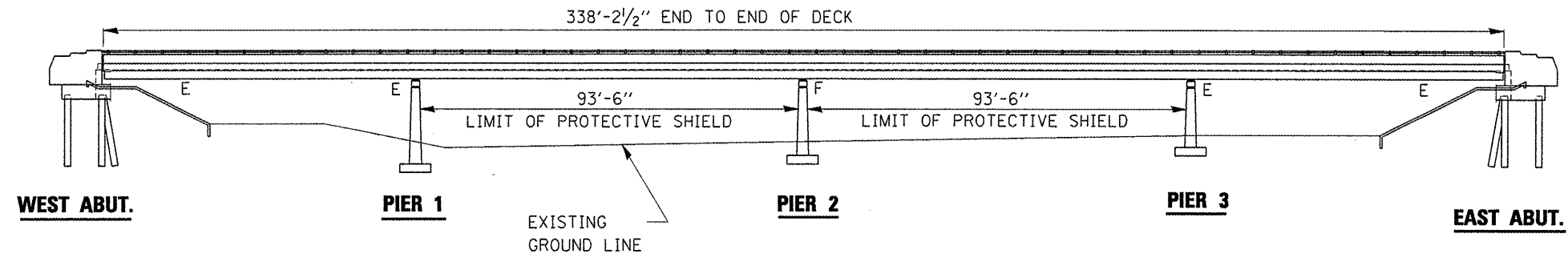
REVISIONS	
NAME	DATE

ILLINOIS DEPARTMENT OF TRANSPORTATION  
**EXISTING DECK DETAILS**  
FAP 330 (IL 17) SECTION (1R-B)1-3  
KANKAKEE COUNTY  
STA. 228+10.95  
SN 046-0039 (EB) & SN 046-0040 (WB)

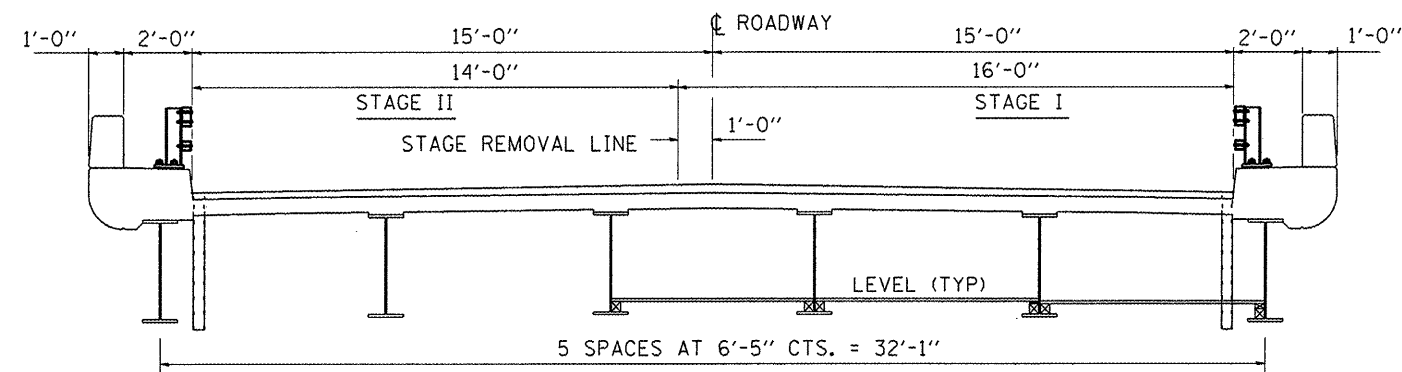
Mar 05, 2008 - 08:39:03 AM  
C:\p\o\lects\cma\In09\cm30\1\der.ctb



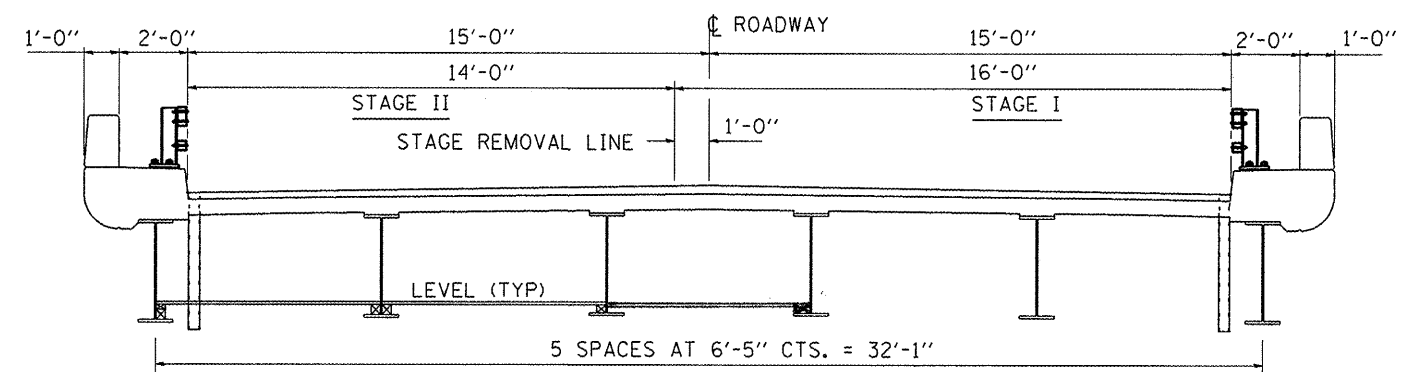
F.A.P. RTE.	SECTION	COUNTY	TOTAL SHEETS	SHEET NO.
330	(1R-B)I-3	KANKAKEE	20	9



**ELEVATION**



**CROSS SECTION**  
LOOKING EAST  
STAGE I



**CROSS SECTION**  
LOOKING EAST  
STAGE II

REVISIONS	
NAME	DATE

ILLINOIS DEPARTMENT OF TRANSPORTATION

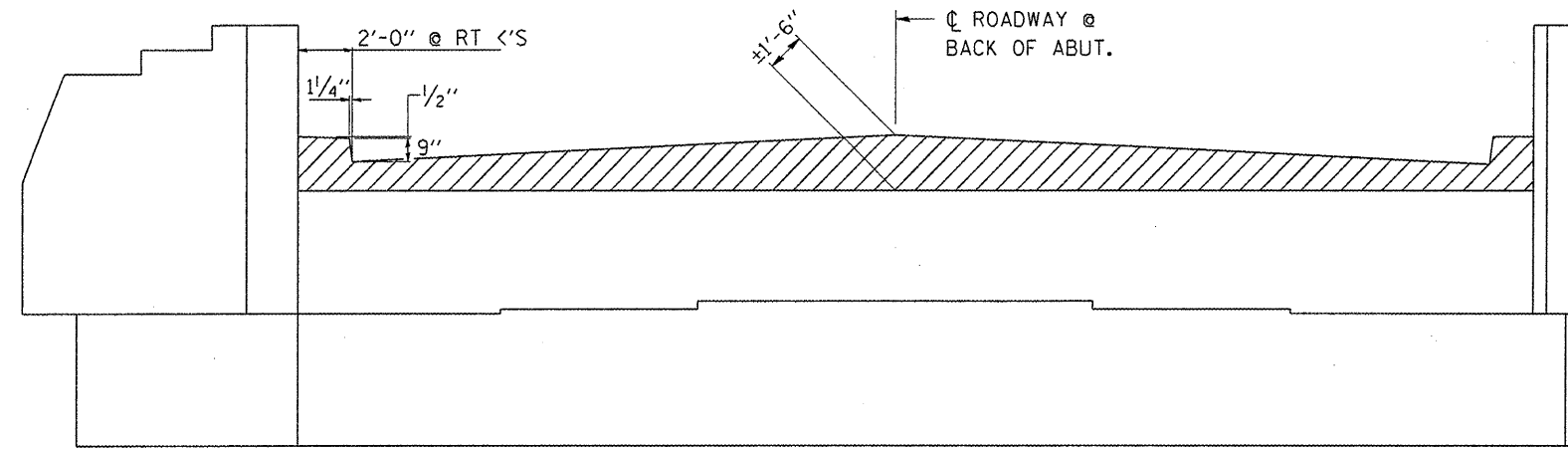
**PROTECTIVE SHIELD DETAILS**

FAP 330 (IL 17) SECTION (1R-B)I-3  
KANKAKEE COUNTY  
STA. 228 + 10.95  
SN 046-0039 (EB) & SN 046-0040 (WB)

Mar 05, 2008 - 08:39:08 AM  
 c:\pco\lectr\cmal\m09\cm303\derat1.is.dgn



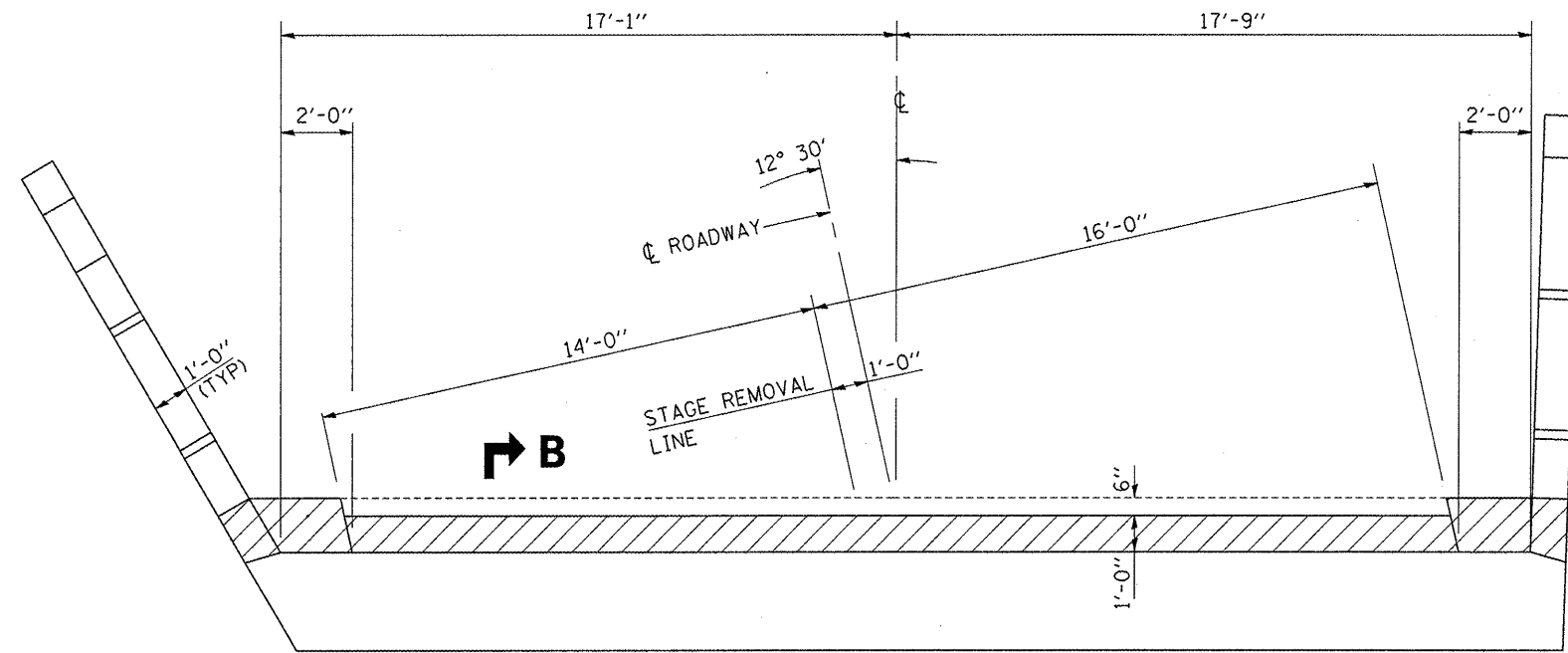
F.A.P. RTE.	SECTION	COUNTY	TOTAL SHEETS	SHEET NO.
330	(1R-B)I-3	KANKAKEE	20	11



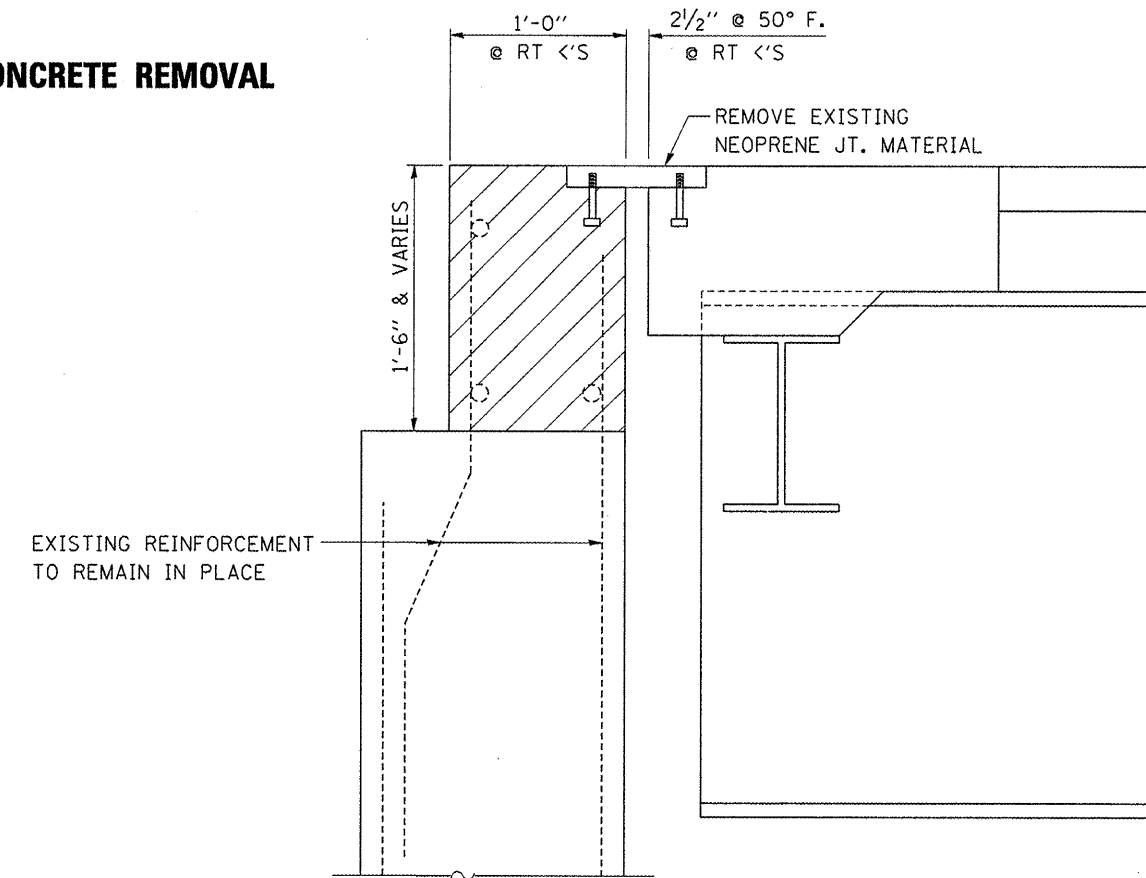
**ELEVATION**

LOOKING EAST

 **CONCRETE REMOVAL**



**PLAN**



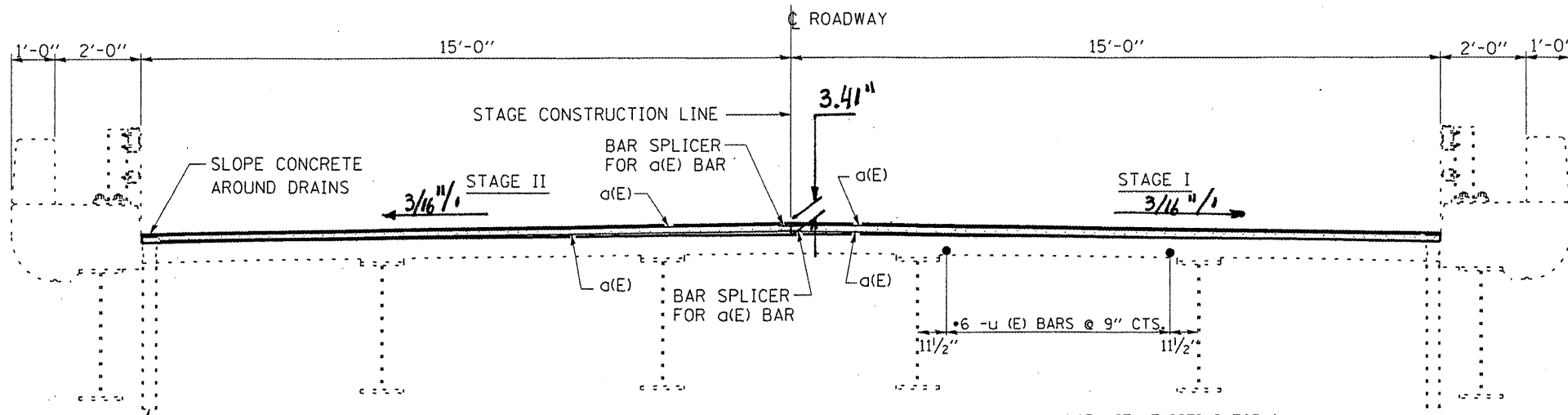
**SECTION B-B**

Mar 05, 2008 08:39:44 AM  
 c:\projects\cmal\m09\cm303\detail11.dgn

REVISIONS	
NAME	DATE

ILLINOIS DEPARTMENT OF TRANSPORTATION  
**EXISTING ABUTMENT DETAILS**  
 FAP 330 (IL 17) SECTION (1R-B)I-3  
 KANKAKEE COUNTY  
 STA. 228+10.95  
 SN 046-0039 (EB) & SN 046-0040 (WB)

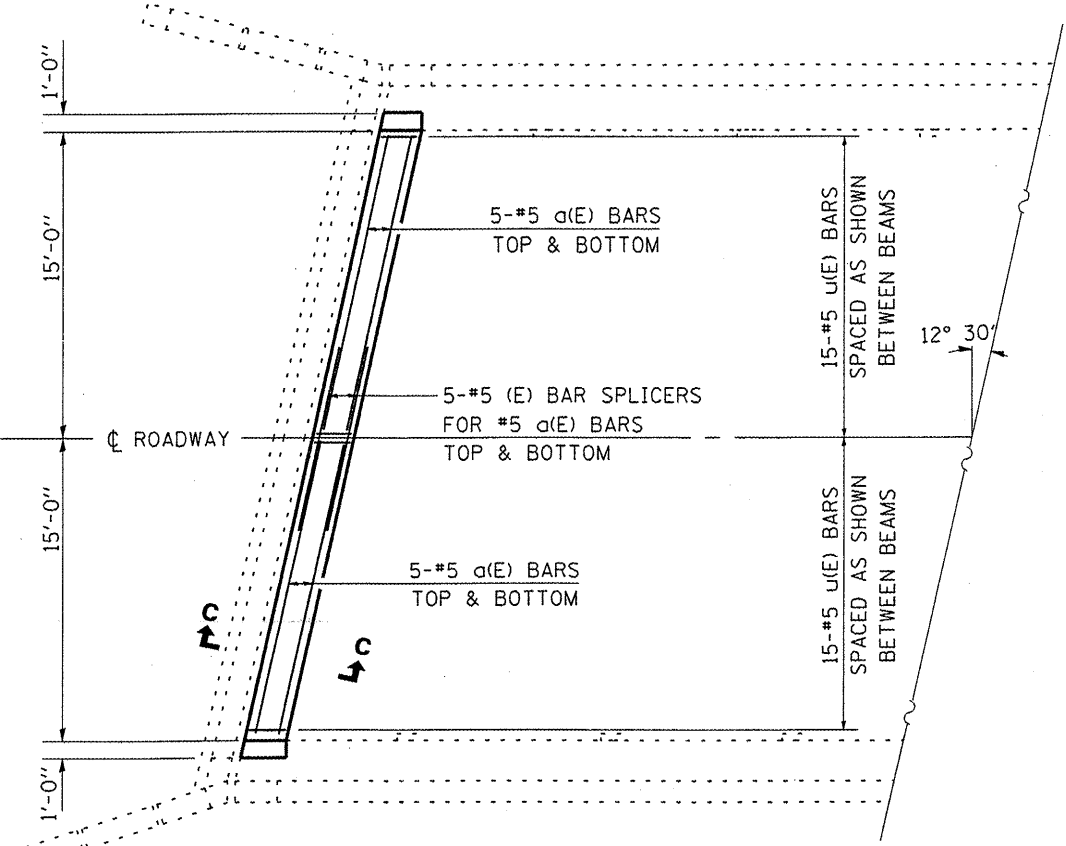
F.A.P. RTE.	SECTION	COUNTY	TOTAL SHEETS	SHEET NO.
330	(1R-B)1-3	KANKAKEE	20	12



**CROSS SECTION**

EXISTING DECK DRAINS ARE TO REMAIN IN PLACE (TYP)

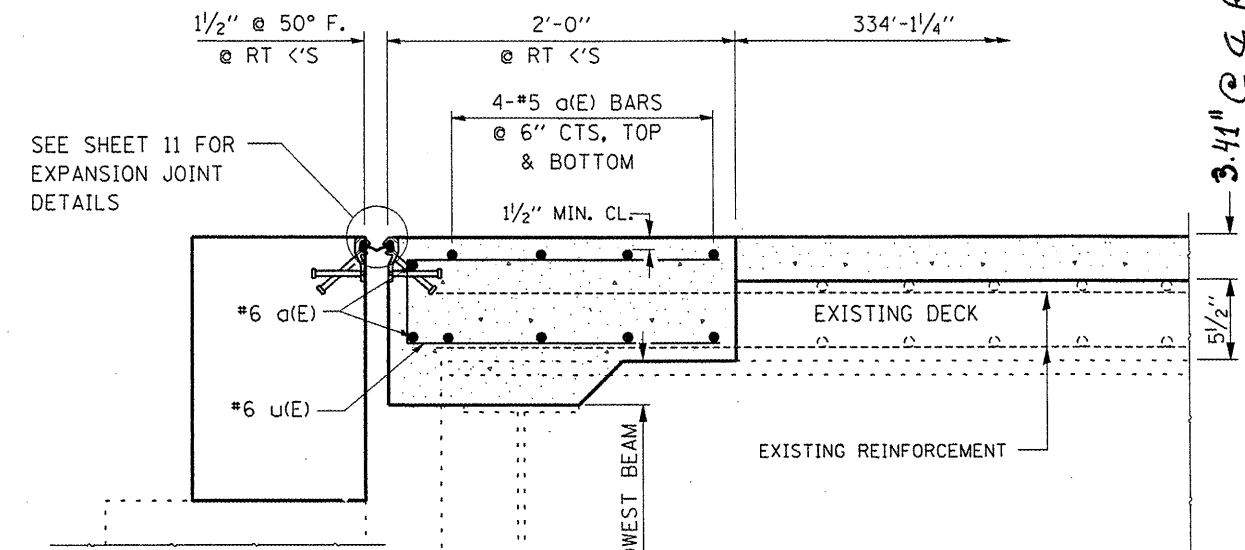
\*LAP WITH EXISTING TOP & BOTTOM REINFORCEMENT



**WEST ABUT.**

EAST ABUT. SYMM. BY ROTATING 180°

**PLAN AT ABUT.**



**SECTION C-C**

**SUPERSTRUCTURE REINFORCEMENT**

Bar	No.	Size	Length	Shape
alpha(E)	20	#5	15'-0"	—
u(E)	30	#5	3'-11"	□
Bar Splicers			Each	10
Epoxy Coated				
Reinforcement Bars,			Pound	440
Epoxy Coated				

Reinforcement bars designated (E) shall be epoxy coated.

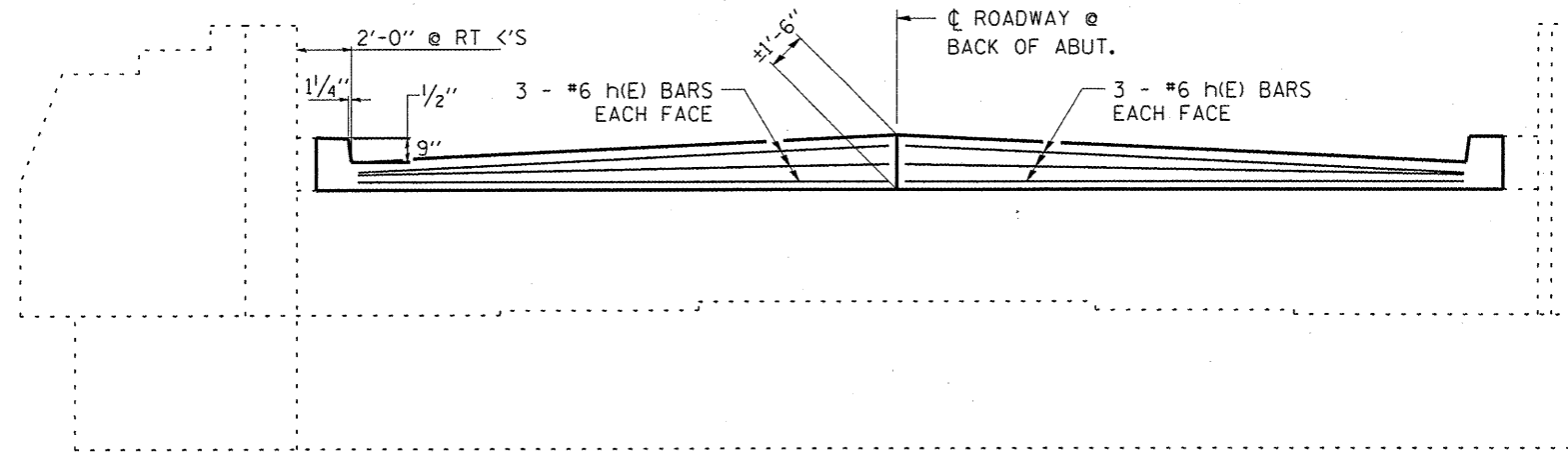
Quantities shown are calculated for "One" abutment only

REVISIONS	
NAME	DATE

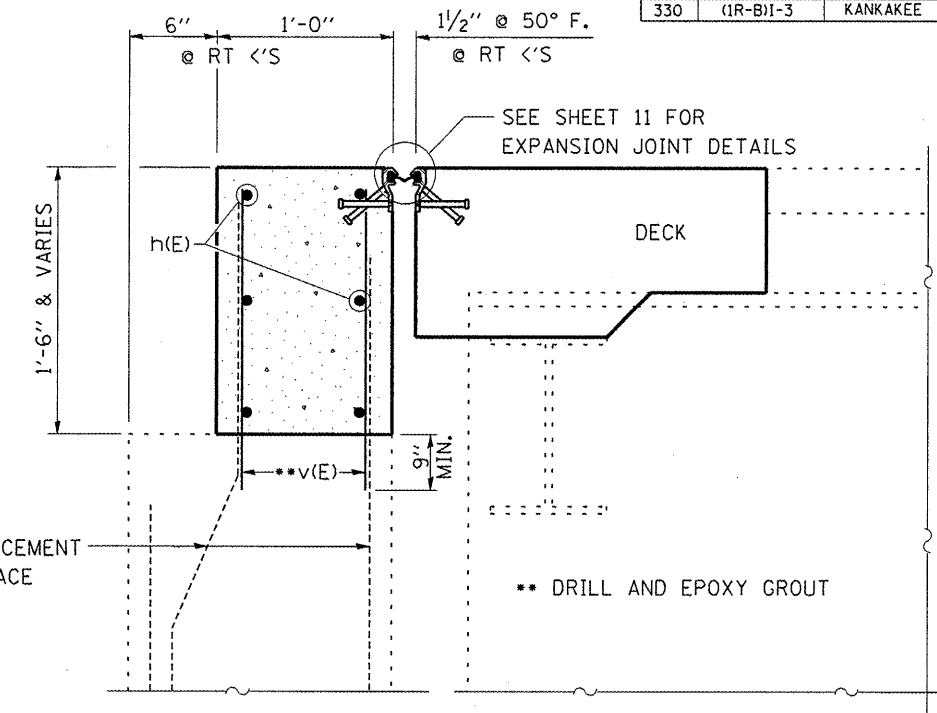
ILLINOIS DEPARTMENT OF TRANSPORTATION  
**PROPOSED DECK DETAILS**  
 FAP 330 (IL 17) SECTION (1R-B)1-3  
 KANKAKEE COUNTY  
 STA. 228+10.95  
 SN 046-0039 (EB) & SN 046-0040 (WB)

Mar 05, 2008 - 08:39:51 AM  
 c:\pro\ecrs\cma\in09\cm303\detail1.s.dgn

F.A.P. RTE.	SECTION	COUNTY	TOTAL SHEETS	SHEET NO.
330	(1R-B)I-3	KANKAKEE	20	13



**ELEVATION**



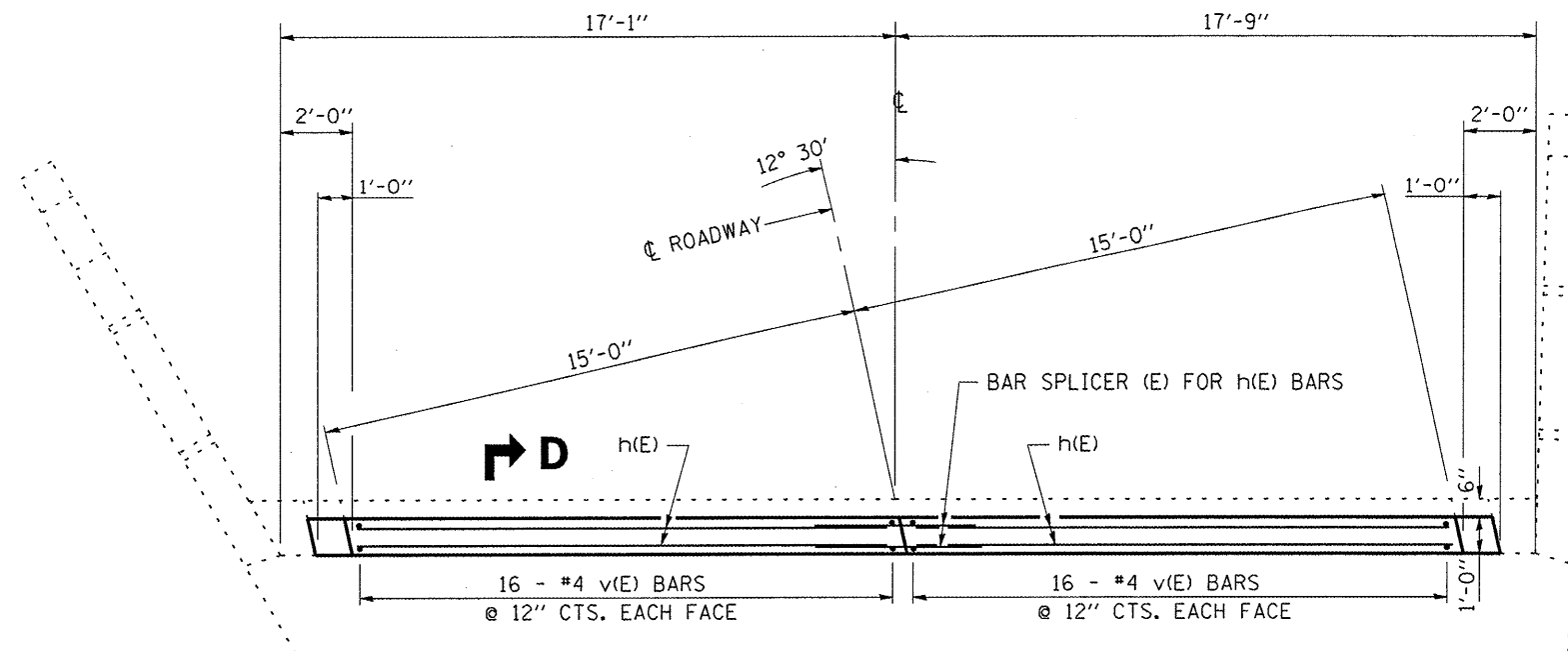
**SECTION D-D**

**ABUTMENT REINFORCEMENT**

Bar	No.	Size	Length	Shape
h(E)	12	#6	15'-0"	—
v(E)	64	#4	2'-1"	—
Bar Splicers Epoxy Coated			Each	6
Reinforcement Bars, Epoxy Coated			Pound	360

Reinforcement bars designated (E) shall be epoxy coated.

Quantities shown are calculated for "One" abutment only



**PLAN**

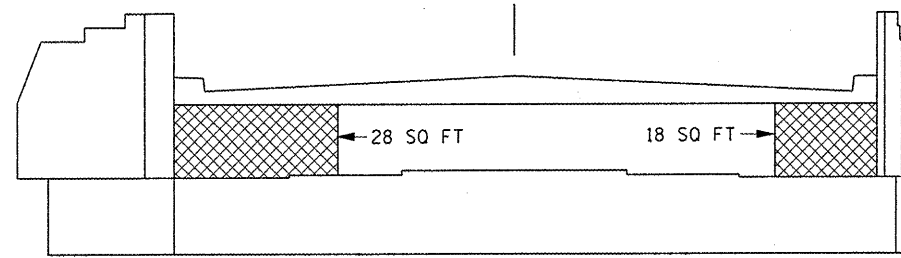
LOOKING WITH DIRECTION OF TRAFFIC

REVISIONS	
NAME	DATE

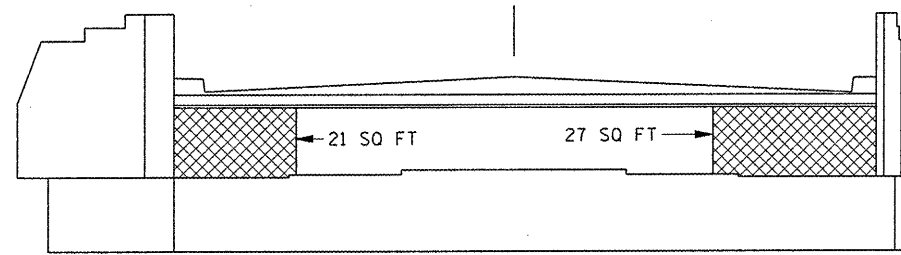
ILLINOIS DEPARTMENT OF TRANSPORTATION  
**PROPOSED ABUT. DETAILS**  
 FAP 330 (IL 17) SECTION (1R-B)I-3  
 KANKAKEE COUNTY  
 STA. 228+10.95  
 SN 046-0039 (EB) & SN 046-0040 (WB)

Mar 05, 2008 - 08:40:00 AM  
 G:\pro\lect\5\cama\1\09\cm303\der\al1s.dgn

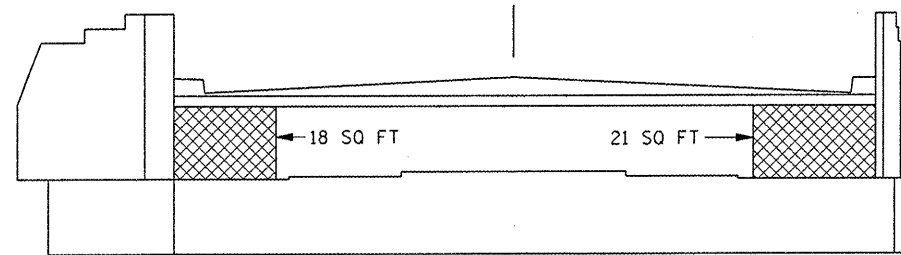
F.A.P. RTE.	SECTION	COUNTY	TOTAL SHEETS	SHEET NO.
330	(1R-B)I-3	KANKAKEE	20	14



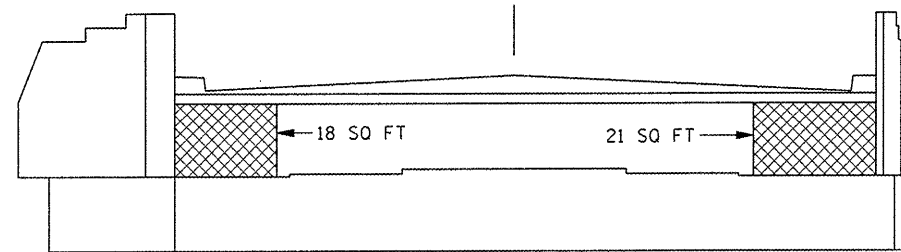
**SN 046-0039 (EB)  
WEST ABUTMENT**



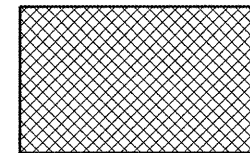
**SN 046-0039 (EB)  
EAST ABUTMENT**



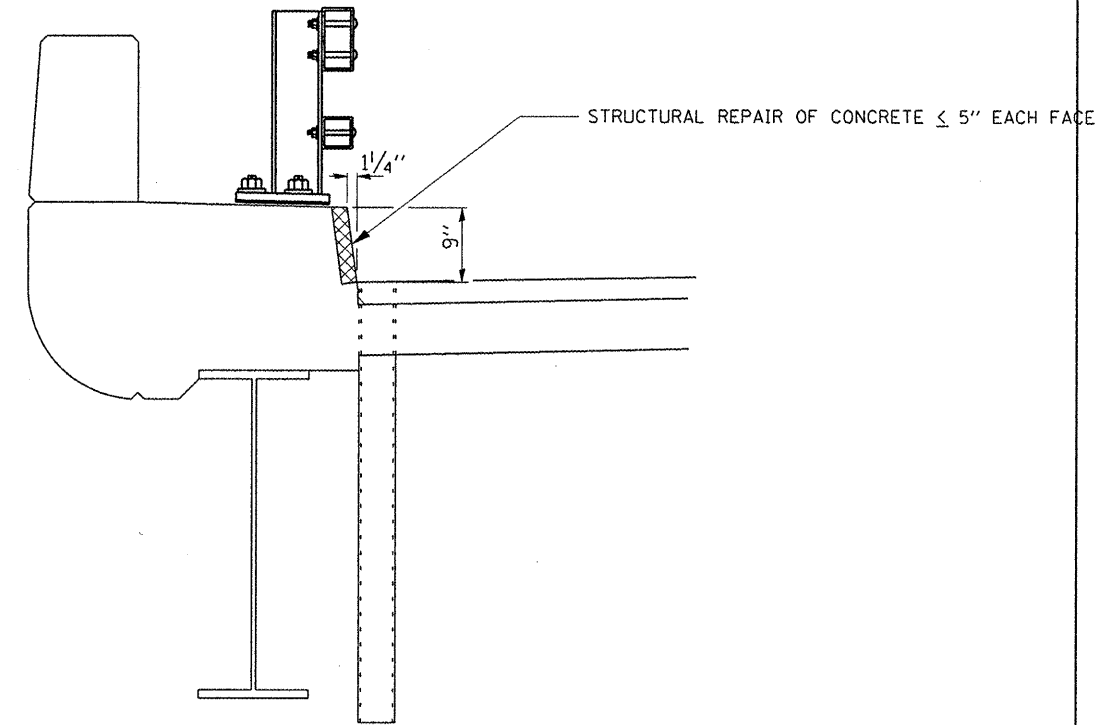
**SN 046-0040 (WB)  
WEST ABUTMENT**



**SN 046-0040 (WB)  
EAST ABUTMENT**



**STRUCTURAL REPAIR OF CONCRETE  
(DEPTH EQUAL TO OR LESS THEN 5")**



**CURB DETAIL**

Mar 05, 2008 - 08:40:18 AM  
 c:\pro\lects\cma1r09\cm303\def011s.dgn

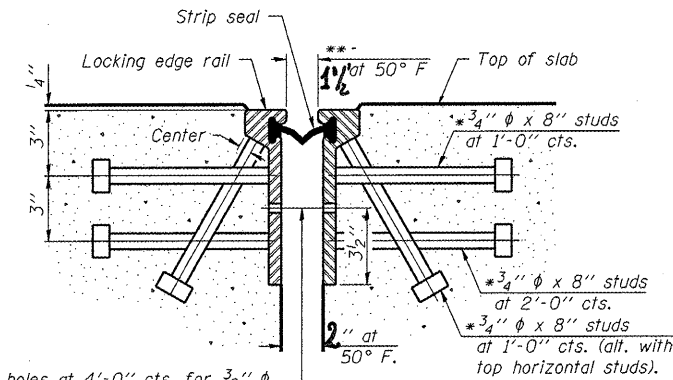
REVISIONS	
NAME	DATE

ILLINOIS DEPARTMENT OF TRANSPORTATION  
**STRUCTURAL REPAIR  
 OF CONCRETE**  
 FAP 330 (IL 17) SECTION (1R-B)I-3  
 KANKAKEE COUNTY  
 STA. 228+10.95  
 SN 046-0039 (EB) & SN 046-0040 (WB)

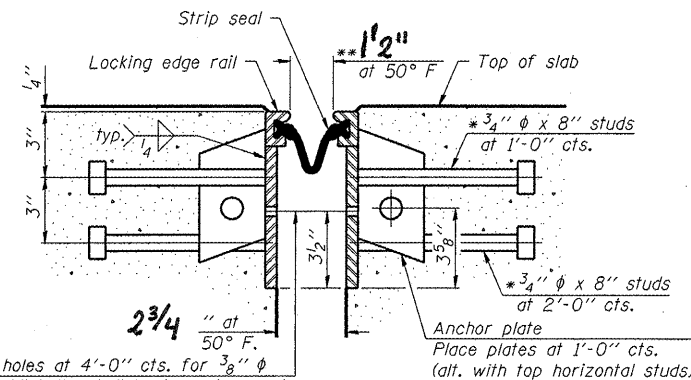
F.A.P. RTE.	SECTION	COUNTY	TOTAL SHEETS	SHEET NO.
330	(1R-B)I-3	KANKAKEE	20	15

\* Granular or solid flux filled headed studs conforming to Article 1006.32 of the Std. Specs., automatically end welded.

\*\* When joint is fixed, dimension is set at 1 1/2".



7/16"  $\phi$  holes at 4'-0" cts. for 3/8"  $\phi$  bolts. All bolts shall be burned, sawed, or chipped off flush with the plates after forms are removed, typ.



7/16"  $\phi$  holes at 4'-0" cts. for 3/8"  $\phi$  bolts. All bolts shall be burned, sawed, or chipped off flush with the plates after forms are removed, typ.

Notes:

The strip seal shall be made continuous and shall have a minimum thickness of 1/4". The configuration of the strip seal shall match the configuration of the Locking Edge Rails. Open or "webbed" strip seal gland configurations are not permitted. The gland shall be sized for a maximum rated movement of 4 inches.

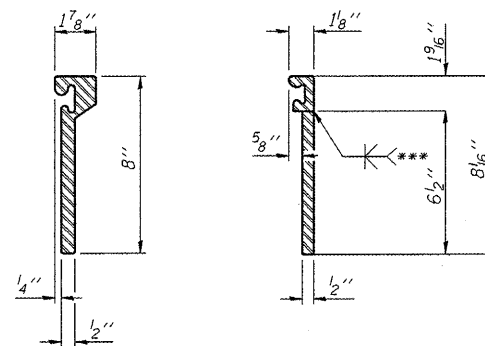
The height and thickness of the Locking Edge Rails shown are minimum dimensions. The actual configuration of the Locking Edge Rails and matching strip seal may vary from manufacturer to manufacturer. Flanged edge rails will not be allowed. Locking Edge Rails may be spliced at slope discontinuities and stage construction joints.

The manufacturer's recommended installation methods shall be followed. The joint opening and deck dimensions detailed on the superstructure are based on a rolled rail expansion joint. If the Contractor elects to use the welded rail expansion joint, the opening and deck dimensions shall be modified according to the dimensions detailed on this sheet. Required modifications shall be made at no additional cost to the State.

All steel components shall be galvanized after fabrication according to Article 520.03 of the Standard Specifications.

SECTION THRU ROLLED RAIL JOINT

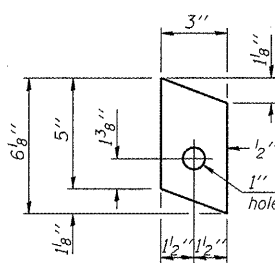
SECTION THRU WELDED RAIL JOINT



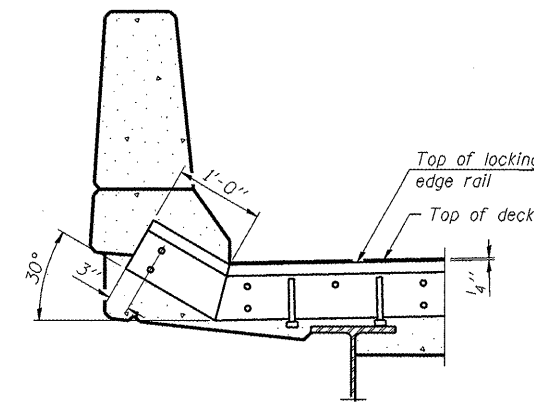
\*\*\* Back gouge not required if complete joint penetration is verified by mock-up.

LOCKING EDGE RAIL SPLICE

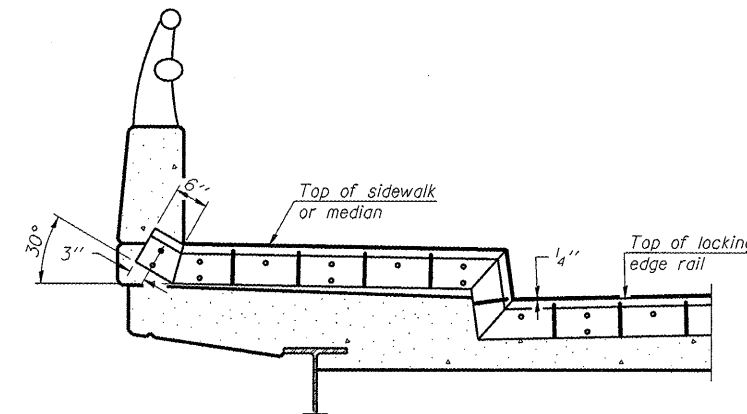
The inside of the locking edge rail groove shall be free of weld residue.



ANCHOR PLATE (for welded rail)



AT PARAPET

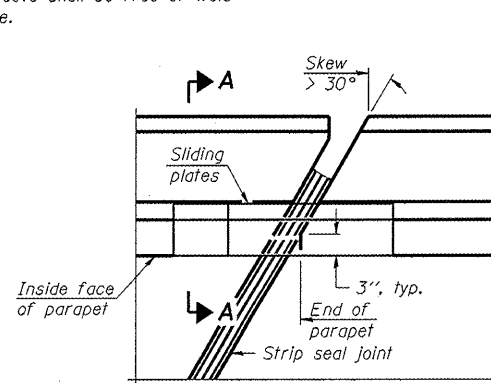


AT SIDEWALK OR MEDIAN

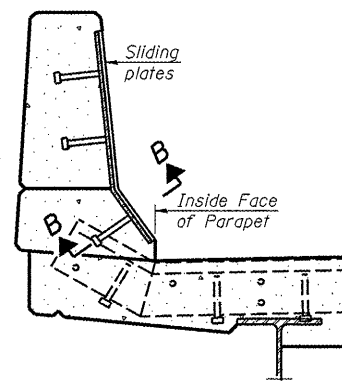
Shorter plates with a single row of studs at 12" cts. may be necessary on medians which are shallower than 9". See manufacturer's recommendation.

ROLLED (EXTRUDED) RAIL WELDED RAIL

LOCKING EDGE RAILS



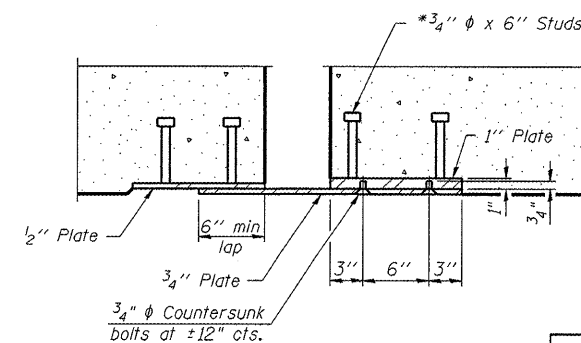
PLAN



SECTION A-A

POINT BLOCK DETAILS (for skews > 30°)

TYPICAL END TREATMENTS



SECTION B-B

BILL OF MATERIAL

Item	Unit	Total
Prefabricated Joint Strip Seal	Foot	37

Quantities shown are calculated for "One" abutment only

REVISIONS	
NAME	DATE

ILLINOIS DEPARTMENT OF TRANSPORTATION  
**EXPANSION JOINT DETAILS**  
 FAP 330 (IL 17) SECTION (1R-B)I-3  
 KANKAKEE COUNTY  
 STA. 228+10.95  
 SN 046-0039 (EB) & SN 046-0040 (WB)

F.A.P. RTE.	SECTION	COUNTY	TOTAL SHEETS	SHEET NO.
330	(1R-B)I-3	KANKAKEE	20	16

**NOTES**

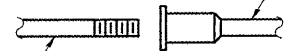
Bar splicer assemblies shall be of an approved type and shall develop in tension at least 125 percent of the yield strength of the lapped reinforcement bars.  
 Splicer rods shall be of minimum 60 ksi yield strength, threaded or coiled full length.  
 All reinforcement bars shall be lapped and tied to the splicer rods or dowel bars.  
 Bar splicer assemblies shall be epoxy coated according to the requirements for reinforcement bars.  
 Other systems of similar design may be submitted to the Engineer for approval. Approval shall be based on certified test results from an approved testing laboratory that the proposed bar splicer assembly satisfies the following requirements:

- ① Minimum Capacity (Tension in kips) =  $1.25 \times f_y \times A_s$
- ② Minimum \*Pull-out Strength (Tension in kips) =  $0.66 \times f_y \times A_s$

Where  $f_y$  = Yield strength of lapped reinforcement bars in ksi.  
 $A_s$  = Tensile stress area of lapped reinforcement bars.  
 \* = 28 day concrete

Bar Size to be Spliced	Splicer Rod or Dowel Bar Length	Strength Requirements	
		Min. Capacity kips - tension	Min. Pull-Out Strength kips - tension
#4	1'-8"	14.7	7.9
#5	2'-0"	23.0	12.3
#6	2'-7"	33.1	17.4
#7	3'-5"	45.1	23.8
#8	4'-6"	58.9	31.3
#9	5'-9"	75.0	39.6
#10	7'-3"	95.0	50.3
#11	9'-0"	117.4	61.8

The diameter of this part is equal or larger than the diameter of bar spliced.



**ROLLED THREAD DOWEL BAR**



**\*\* ONE PIECE**

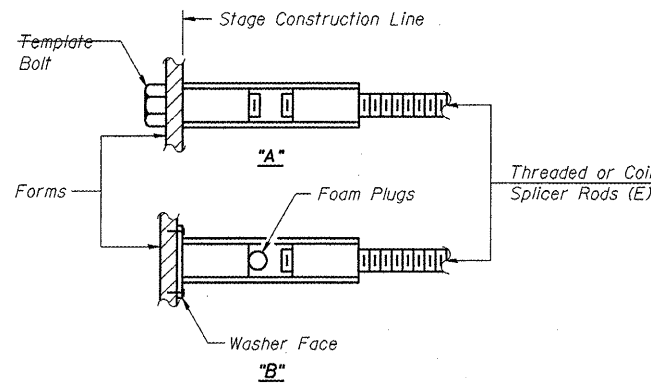
Wire Connector



**WELDED SECTIONS**

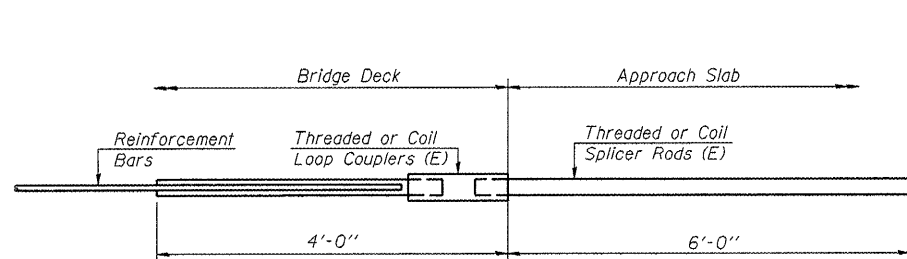
**BAR SPLICER ASSEMBLY ALTERNATIVES**

\*\* Heavy Hex Nuts conforming to ASTM A 563, Grade C, D or DH may be used.



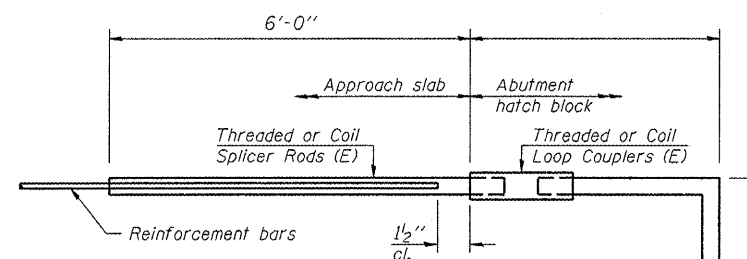
**INSTALLATION AND SETTING METHODS**

"A" : Set bar splicer assembly by means of a template bolt.  
 "B" : Set bar splicer assembly by nailing to wood forms or cementing to steel forms.  
 (E) : Indicates epoxy coating.



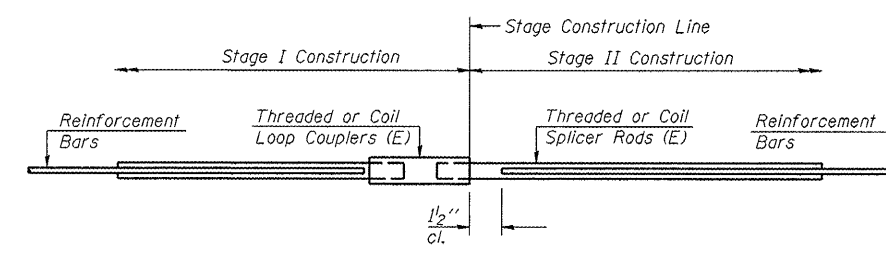
**FOR INTEGRAL OR SEMI-INTEGRAL ABUTMENTS**

Bar Splicer for #5 bar
Min. Capacity = 23.0 kips - tension
Min. Pull-out Strength = 12.3 kips - tension
No. Required =



**FOR STUB ABUTMENTS**

Bar Splicer for #5 bar
Min. Capacity = 23.0 kips - tension
Min. Pull-out Strength = 12.3 kips - tension
No. Required =



**STANDARD**

Bar Size	No. Assemblies Required	Location
#5	10	DECK
#6	6	ABUTMENT

Quantities shown are calculated for "One" abutment only

REVISIONS	
NAME	DATE

ILLINOIS DEPARTMENT OF TRANSPORTATION  
**BAR SPLICER ASSEMBLY DETAILS**  
 FAP 330 (IL 17) SECTION (1R-B)I-3  
 KANKAKEE COUNTY  
 STA. 228 + 10.95  
 SN 046-0039 (EB) & SN 046-0040 (WB)

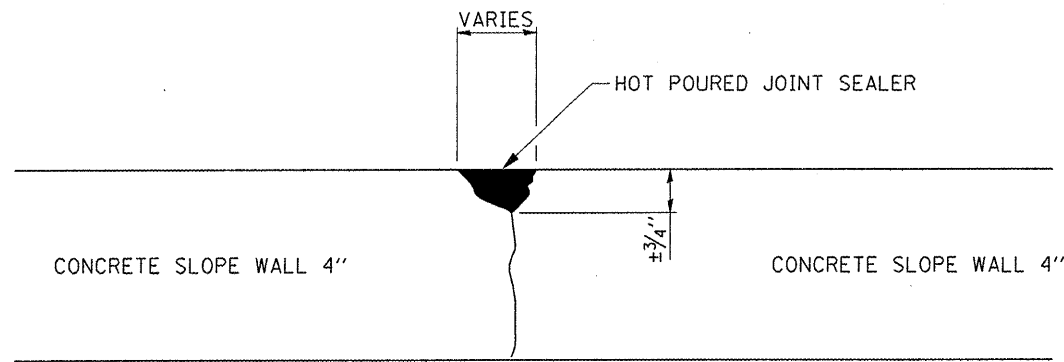
Mar 05, 2008 - 08:56:31 AM  
 c:\pro\lects\cma\tr09\cm303\der\011s.dgn

BSD-1

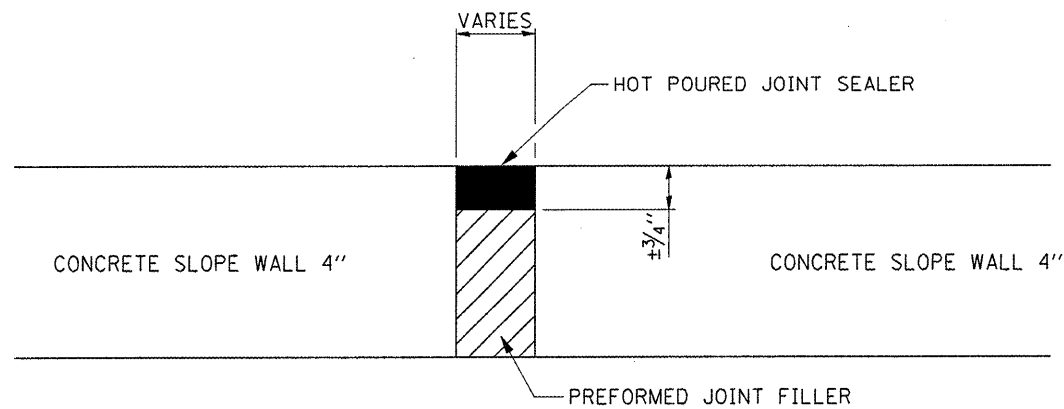
11-1-06



F.A.P. RTE.	SECTION	COUNTY	TOTAL SHEETS	SHEET NO.
330	(1R-B)I-3	KANKAKEE	20	17



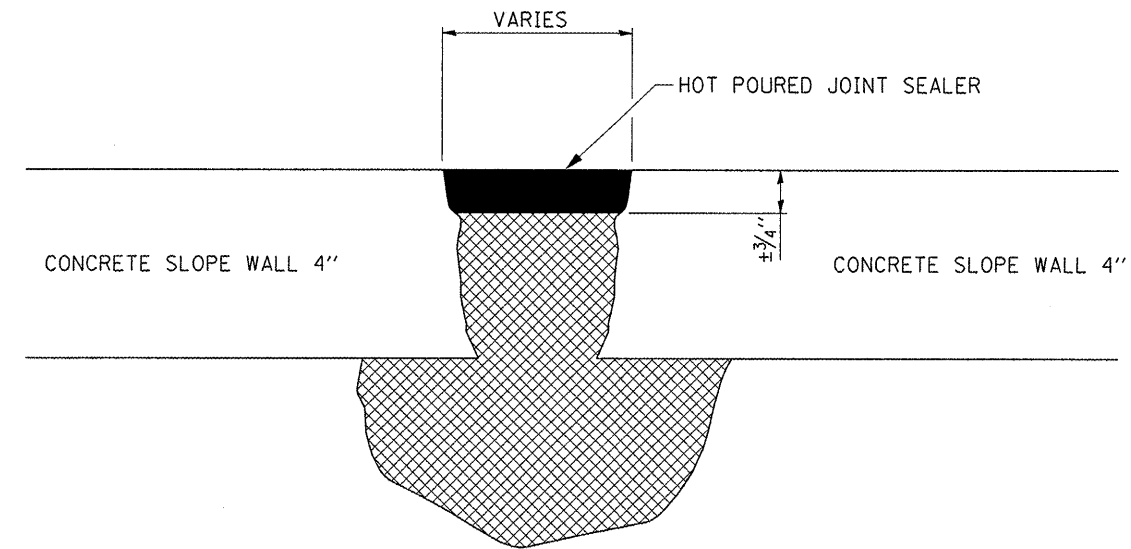
**CRACK SEALING**



**JOINT SEALING**



**CONTROLLED LOW-STRENGTH MATERIAL**



**VOID SEALING**

**NOTES:**

ALL CRACKS, JOINTS AND VOIDS SHALL BE FILLED AND SEALED ACROSS THE ENTIRE WIDTH OF SLOPE WALL (OUT TO OUT OF STRUCTURES).

CRACKS NARROWER THAN 1/4" SHALL BE ROUTED TO A WIDTH OF ±3/4"

CONTROLLED LOW-STRENGTH MATERIAL SHALL BE ACCORDING TO SECTION 593 OF THE STANDARD SPECIFICATIONS.

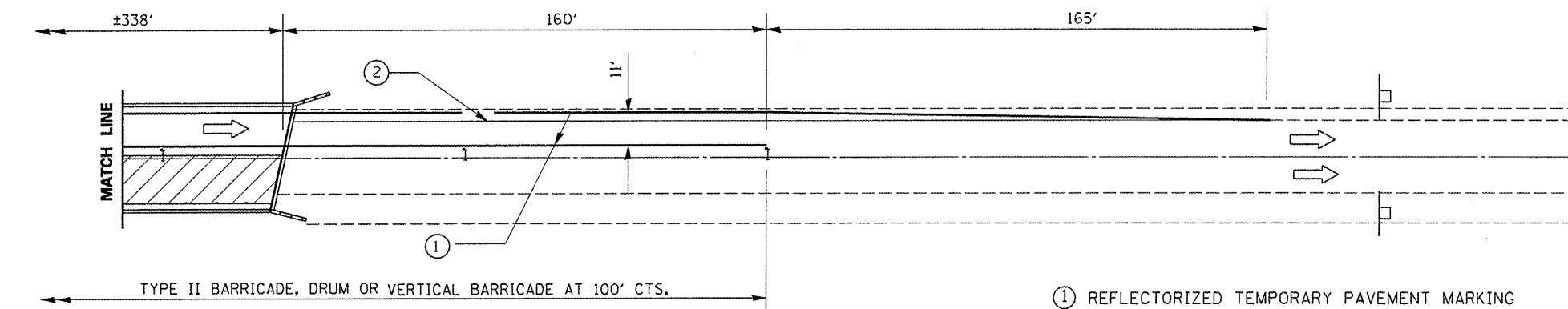
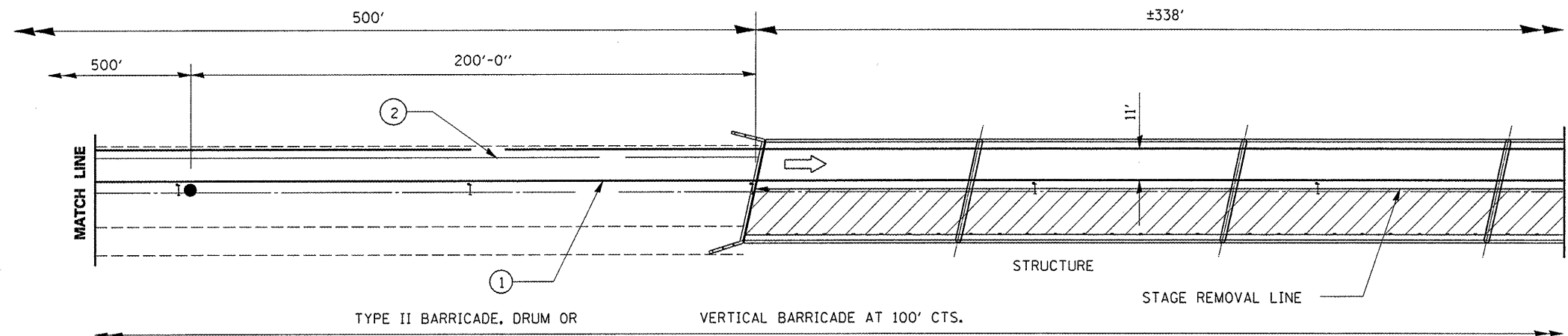
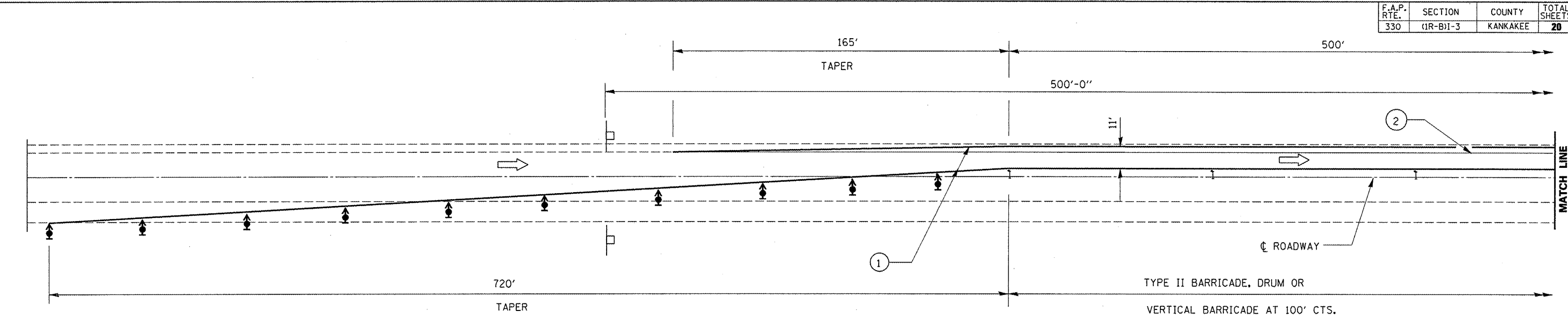
JOINT ROUTING AND SEALING SHALL BE ACCORDING TO SECTION 452 OF THE STANDARD SPECIFICATIONS.

REVISIONS	
NAME	DATE

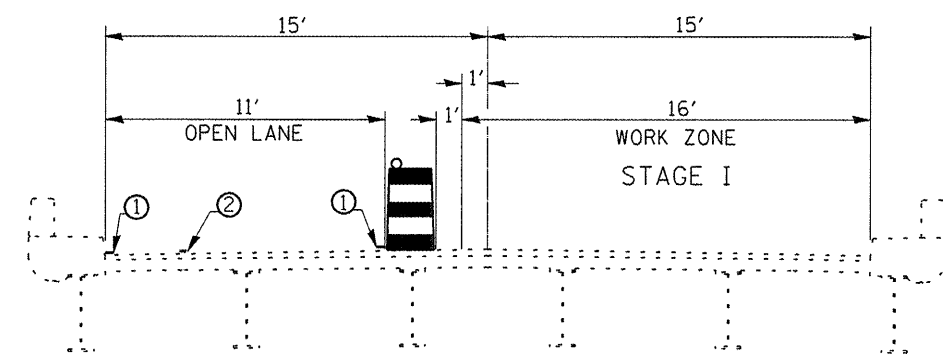
ILLINOIS DEPARTMENT OF TRANSPORTATION  
**CRACK AND JOINT SEALING**  
**AT SLOPE WALLS**  
 FAP 330 (IL 17) SECTION (1R-B)I-3  
 KANKAKEE COUNTY  
 STA. 228+10.95  
 SN 046-0039 (EB) & SN 046-0040 (WB)

Mar 05, 2008 08:44:26 AM  
 c:\pcc\lects\cma\nc09\cm303\det.d\11s.dgn

F.A.P. RTE.	SECTION	COUNTY	TOTAL SHEETS	SHEET NO.
330	(1R-B)I-3	KANKAKEE	20	18



- SYMBOLS**
- ↑ Arrow board
  - ▨ Work area
  - ⊥ Sign
  - ⬆ Direction indicator barricade with steady burn monodirectional light
  - I Type II barricade, drum, or vertical barricade
  - ◆ Type II barricade, drum, or vertical barricade with steady burn monodirectional light
  - Flagger with traffic control sign



**CROSS SECTION**

- ① REFLECTORIZED TEMPORARY PAVEMENT MARKING TAPE SHALL BE PLACED AS SHOWN. THE EDGE LINE SHALL BE WHITE FOR RIGHT LANE CLOSURES AND YELLOW FOR LEFT LANE CLOSURES.
- ② PAVEMENT MARKING REMOVAL.

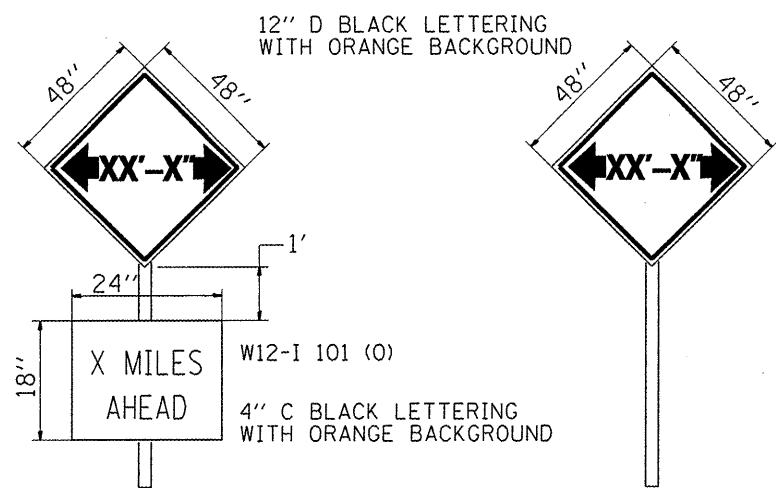
NOTE: STAGE I SHOWN STAGE II SYMM. ABOUT  $\phi$  ROADWAY

REVISIONS	
NAME	DATE

ILLINOIS DEPARTMENT OF TRANSPORTATION  
**TRAFFIC CONTROL STAGING**  
 FAP 330 (IL 17) SECTION (1R-B)I-3  
 KANKAKEE COUNTY  
 STA. 228+10.95  
 SN 046-0039 (EB) & SN 046-0040 (WB)

Mar 05, 2008 - 08:44:33 AM  
 c:\p\projects\cma\in091\cm303\overalls.dgn

F.A.P. RTE.	SECTION	COUNTY	TOTAL SHEETS	SHEET NO.
330	(1R-B)-3	KANKAKEE	20	19

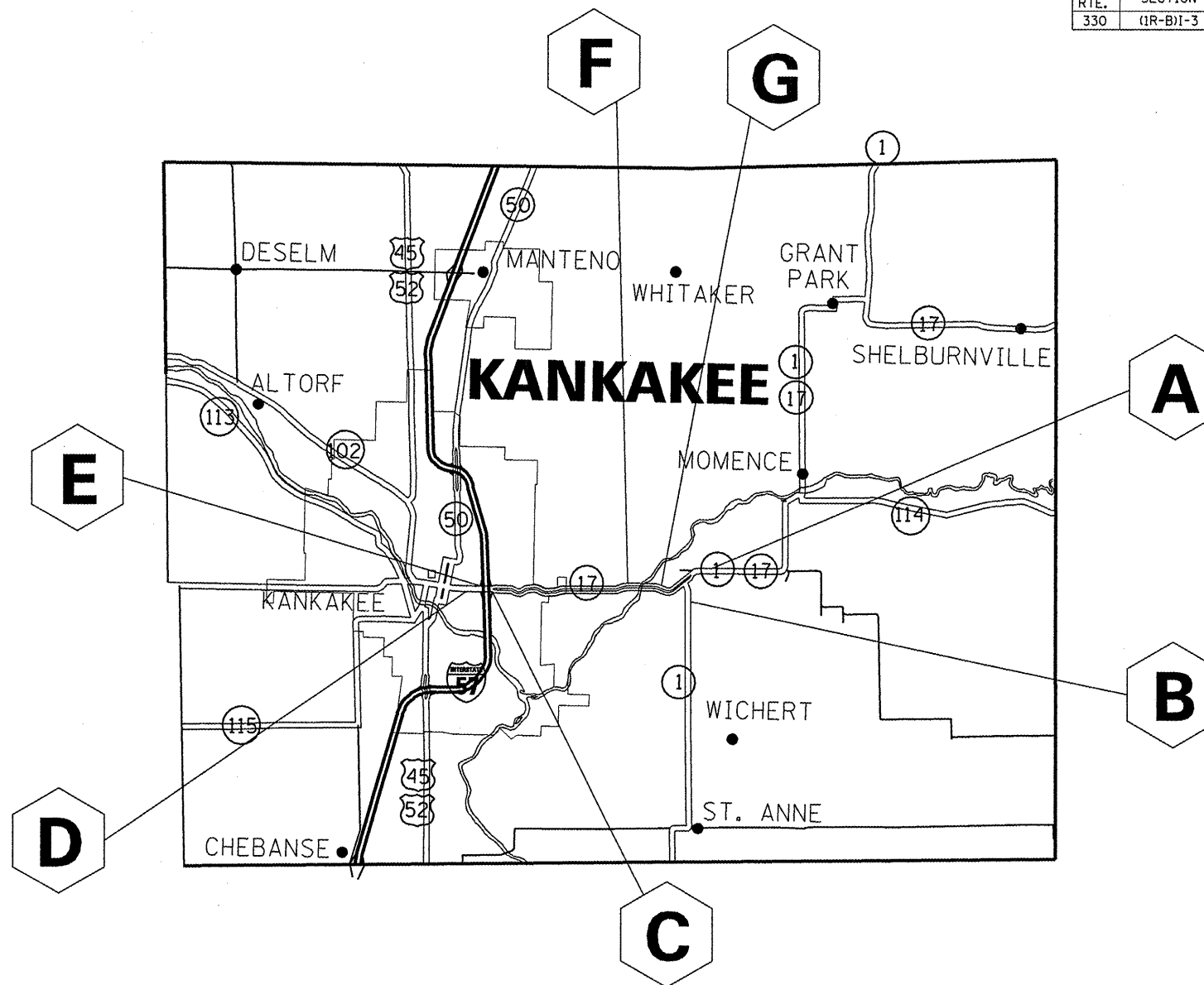


TO BE POST MOUNTED AS SHOWN ELSEWHERE IN THE PLANS.

THE ENGINEER WILL NOTIFY DISTRICT 3 BUREAU OF OPERATIONS 14 CALENDAR DAYS PRIOR TO INSTALLING ANY TRAFFIC CONTROL DEVICES THAT WILL RESTRICT THE PAVEMENT WIDTH.

THE CONTRACTOR SHALL BE RESPONSIBLE FOR COORDINATING WITH THE ENGINEER TO MEET THIS REQUIREMENT.

**WIDTH RESTRICTION SIGNING DETAILS**



**NOTE:**  
THE CONTRACTOR SHALL FURNISH ERECT AND MAINTAIN THE ABOVE SIGNS.



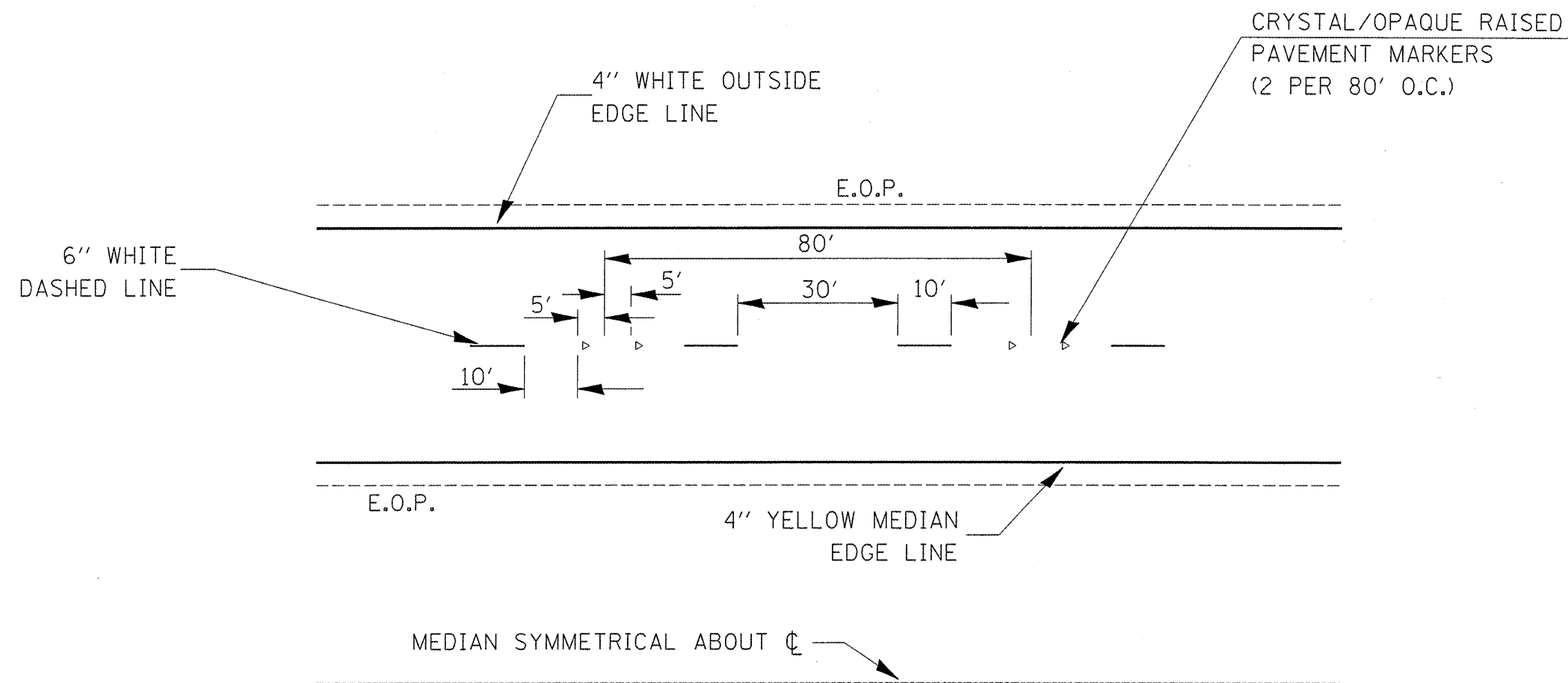
TABLE OF WIDTH RESTRICTION SIGNS				
NO. OF SIGNS	TYPE OF SIGN	SIGN	LOCATION	WIDTH RESTRICTION & MILES AHEAD
2	WIDTH RESTRICTION with W12-I101(O) & M6-3	A	IL 1/17 WESTBOUND 500' EAST OF IL 1 & IL 17 JUNCTION	9'-6" 1.5 MI AHEAD
1	WIDTH RESTRICTION with W12-I101(O) & M6-1	B	IL 1 NORTHBOUND 500' SOUTH OF IL 1 & IL 17 JUNCTION	9'-6" 1.5 MI AHEAD
1	WIDTH RESTRICTION with W12-I101(O) & M6-1	C	I-57 NORTHBOUND TOP OF EXIT RAMP ADJACENT TO IL 17	9'-6" 4.4 MI AHEAD
1	WIDTH RESTRICTION with W12-I101(O) & M6-3	D	IL 17 EASTBOUND 500' WEST OF I-57	9'-6" 4.6 MI AHEAD
1	WIDTH RESTRICTION with W12-I101(O) & M6-1	E	I-57 SOUTHBOUND TOP OF EXIT RAMP ADJACENT TO IL 17	9'-6" 4.5 MI AHEAD
2	WIDTH RESTRICTION	F	IL 17 EASTBOUND WITHIN TC & P 701422	9'-6"
2	WIDTH RESTRICTION	G	IL 17 WESTBOUND WITHIN TC & P 701422	9'-6"

REVISIONS	
NAME	DATE

ILLINOIS DEPARTMENT OF TRANSPORTATION  
**WIDTH RESTRICTION SIGNING**  
 FAP 330 (IL 17) SECTION (1R-B)-3  
 KANKAKEE COUNTY  
 STA. 228 + 10.95  
 SN 046-0039 (EB) & SN 046-0040 (WB)

Mar 05, 2008 - 08:44:41 AM c:\p\proj\lectr\loma\l09\cm303\ref\11s.dgn

F.A.P. RTE.	SECTION	COUNTY	TOTAL SHEETS	SHEET NO.
330	(1R-B)I-3	KANKAKEE	20	20



## TYPICAL PAVEMENT MARKINGS

Mar 05, 2008 - 08:36:29 AM  
c:\proj\ecvs\cmal\m09\cm303\deral\ls.dgn

REVISIONS	
NAME	DATE

ILLINOIS DEPARTMENT OF TRANSPORTATION  
**TYPICAL PAVEMENT MARKINGS**  
 FAP 330 (IL 17) SECTION (1R-B)I-3  
 KANKAKEE COUNTY  
 STA. 228+10.95  
 SN 046-0039 (EB) & SN 046-0040 (WB)