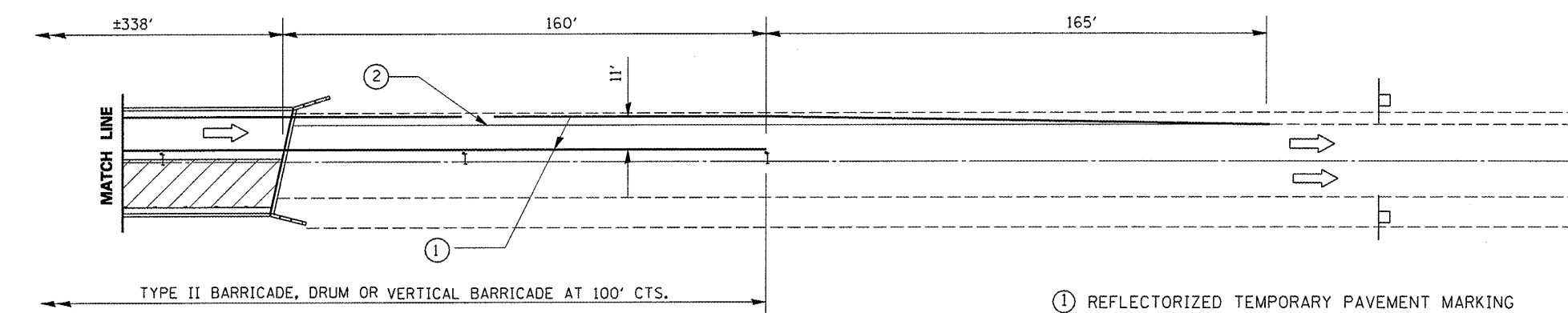
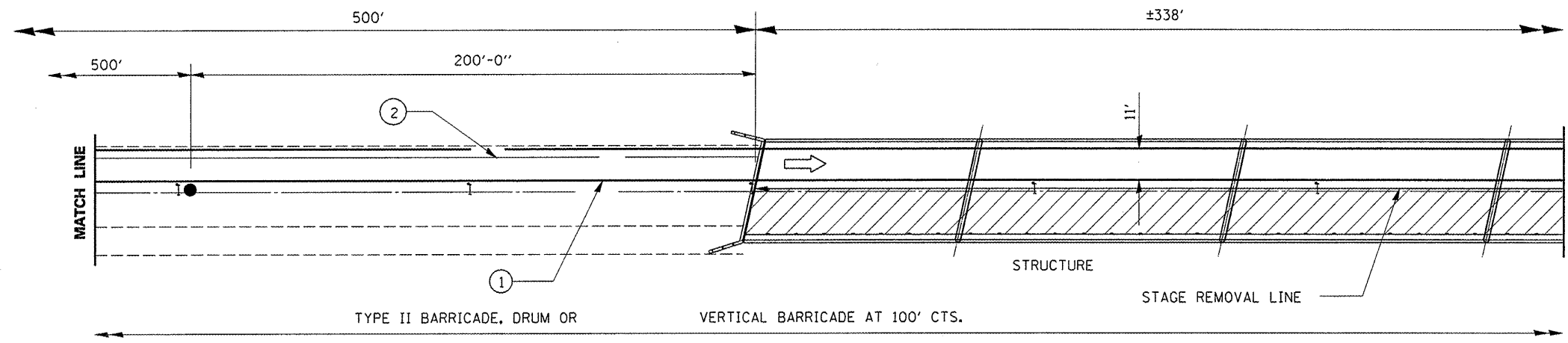
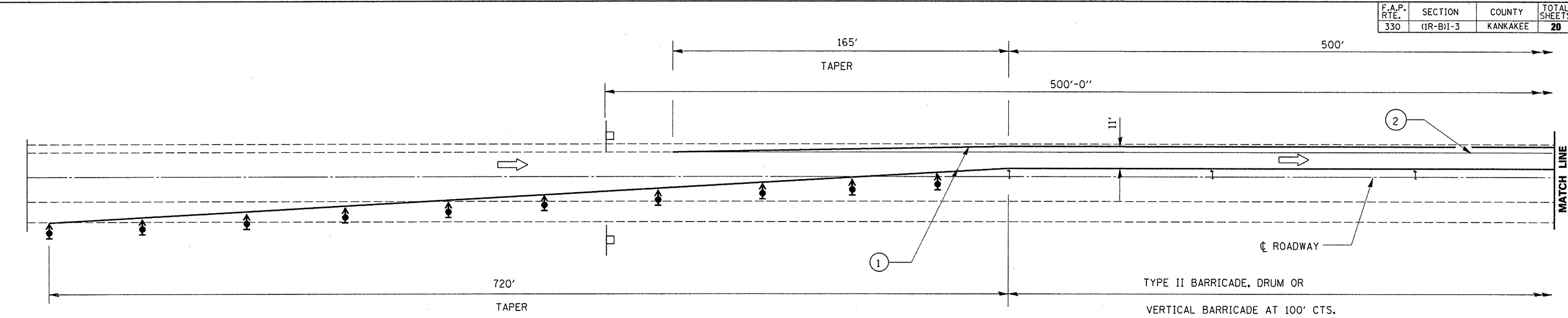
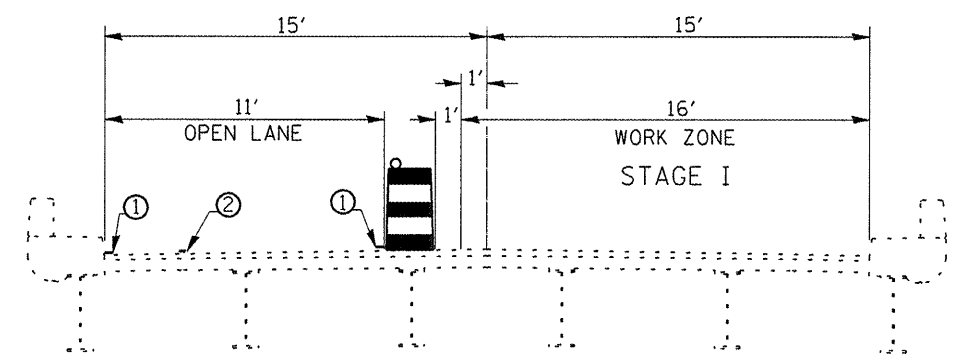


F.A.P. RTE.	SECTION	COUNTY	TOTAL SHEETS	SHEET NO.
330	(1R-B)I-3	KANKAKEE	20	18



- SYMBOLS**
- ↑ Arrow board
 - ▨ Work area
 - ⊥ Sign
 - ↕ Direction indicator barricade with steady burn monodirectional light
 - I Type II barricade, drum, or vertical barricade
 - ◆ Type II barricade, drum, or vertical barricade with steady burn monodirectional light
 - Flagger with traffic control sign



CROSS SECTION

- ① REFLECTORIZED TEMPORARY PAVEMENT MARKING TAPE SHALL BE PLACED AS SHOWN. THE EDGE LINE SHALL BE WHITE FOR RIGHT LANE CLOSURES AND YELLOW FOR LEFT LANE CLOSURES.
- ② PAVEMENT MARKING REMOVAL.

NOTE: STAGE I SHOWN STAGE II SYMM. ABOUT CL ROADWAY

REVISIONS	
NAME	DATE

ILLINOIS DEPARTMENT OF TRANSPORTATION
TRAFFIC CONTROL STAGING
 FAP 330 (IL 17) SECTION (1R-B)I-3
 KANKAKEE COUNTY
 STA. 228+10.95
 SN 046-0039 (EB) & SN 046-0040 (WB)

Mar 05, 2008 - 08:44:33 AM
 c:\p\projects\cma\in091\cm303\overalls.dgn