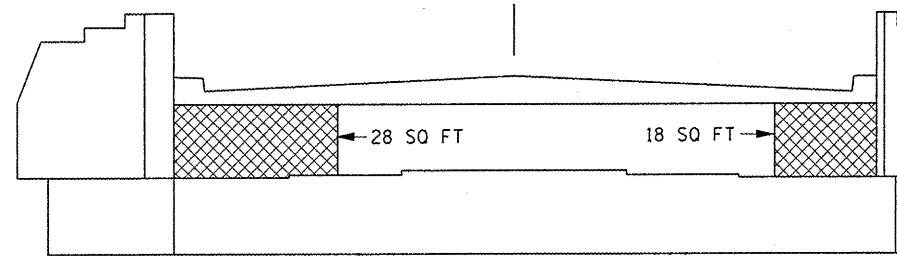
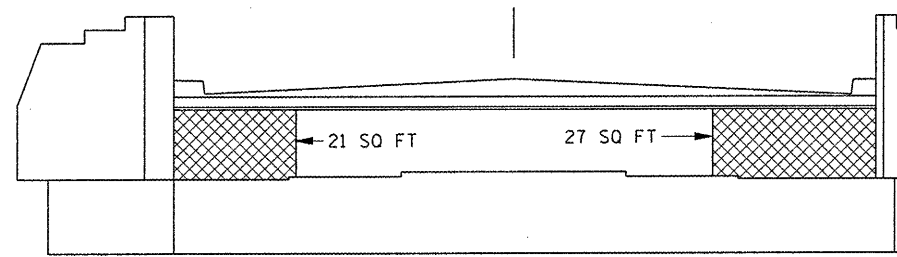


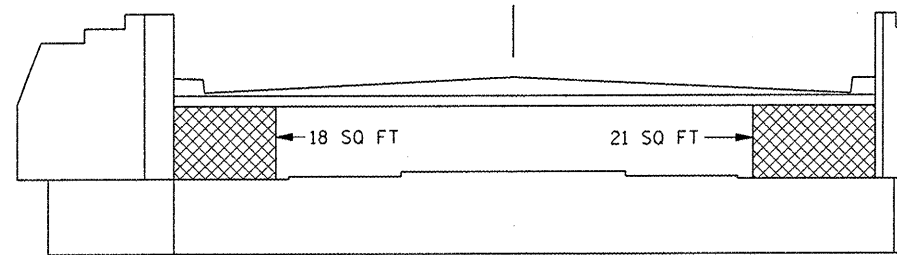
F.A.P. RTE.	SECTION	COUNTY	TOTAL SHEETS	SHEET NO.
330	(1R-B)I-3	KANKAKEE	20	14



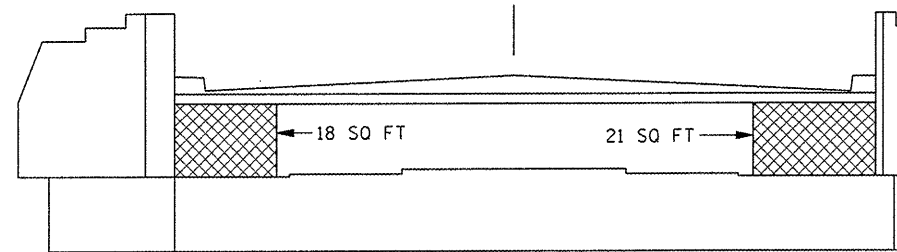
**SN 046-0039 (EB)  
WEST ABUTMENT**



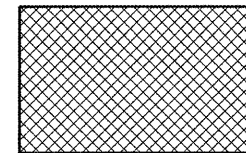
**SN 046-0039 (EB)  
EAST ABUTMENT**



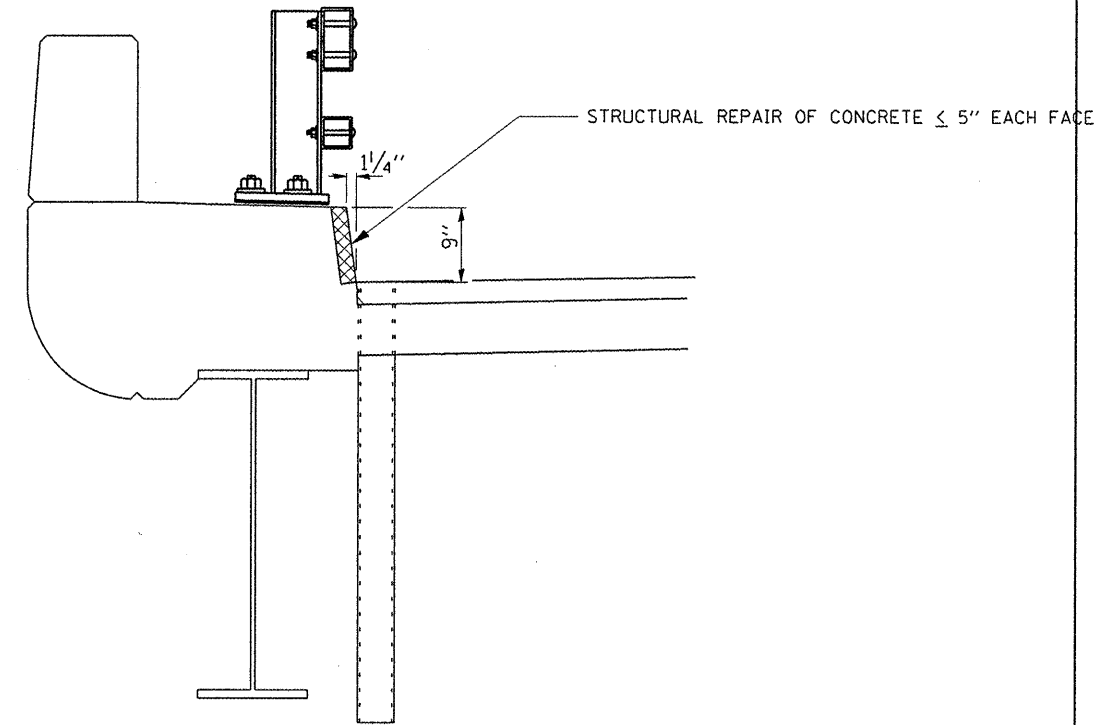
**SN 046-0040 (WB)  
WEST ABUTMENT**



**SN 046-0040 (WB)  
EAST ABUTMENT**



**STRUCTURAL REPAIR OF CONCRETE  
(DEPTH EQUAL TO OR LESS THEN 5")**



**CURB DETAIL**

REVISIONS	
NAME	DATE

ILLINOIS DEPARTMENT OF TRANSPORTATION  
**STRUCTURAL REPAIR  
 OF CONCRETE**  
 FAP 330 (IL 17) SECTION (1R-B)I-3  
 KANKAKEE COUNTY  
 STA. 228+10.95  
 SN 046-0039 (EB) & SN 046-0040 (WB)

Mar 05, 2008 - 08:40:18 AM  
 c:\pro\lects\cma1r09\cm303\def011s.dgn