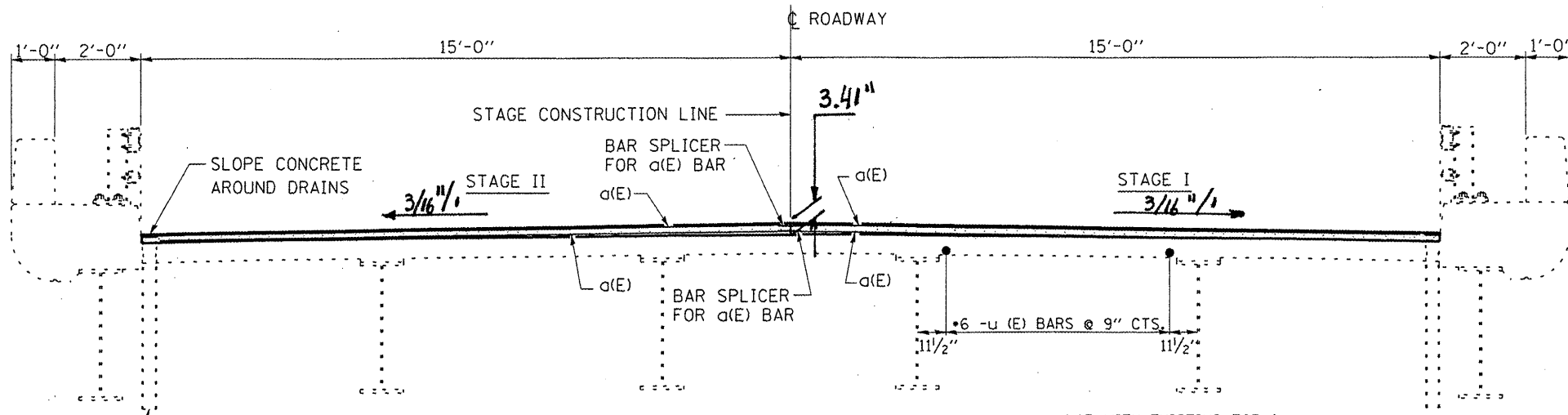
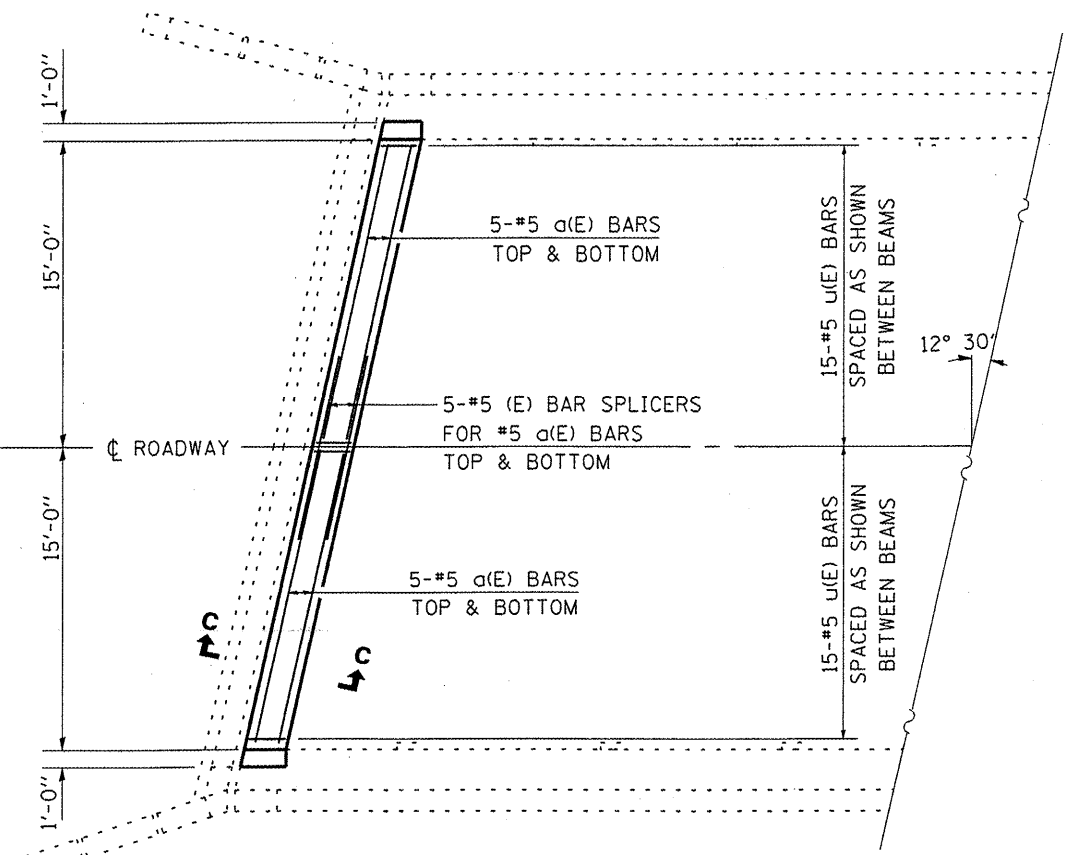


F.A.P. RTE.	SECTION	COUNTY	TOTAL SHEETS	SHEET NO.
330	(1R-B)I-3	KANKAKEE	20	12



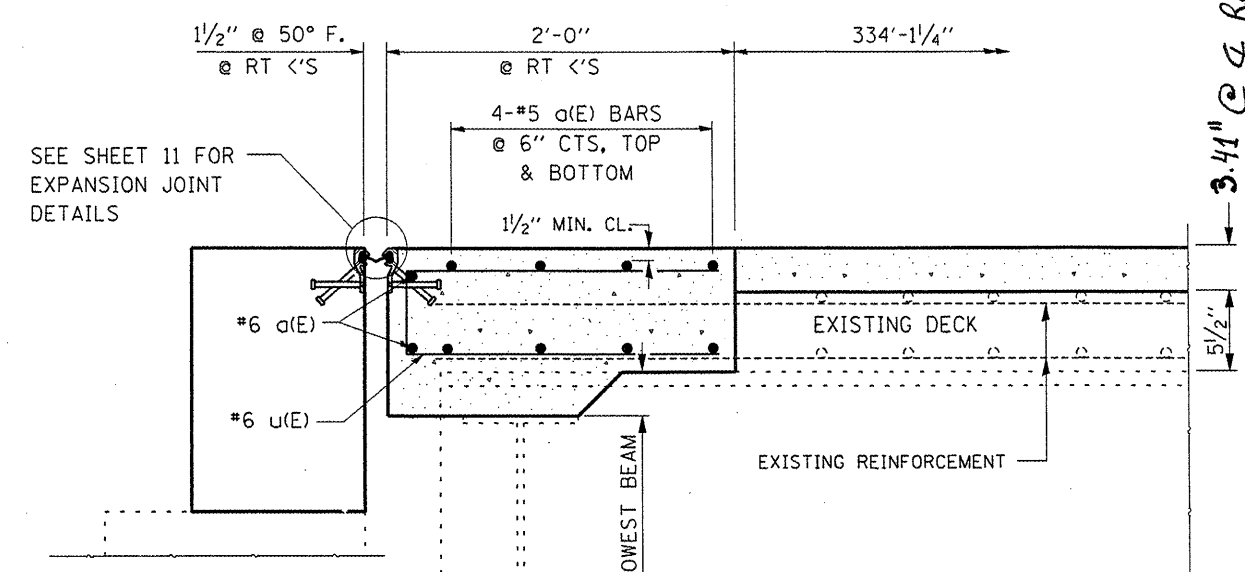
CROSS SECTION



WEST ABUT.

EAST ABUT. SYMM.
BY ROTATING 180°

PLAN AT ABUT.



SECTION C-C

SUPERSTRUCTURE REINFORCEMENT

Bar	No.	Size	Length	Shape
alpha(E)	20	#5	15'-0"	—
u(E)	30	#5	3'-11"	□
Bar Splicers		Epoxy Coated	Each	10
Reinforcement Bars,		Epoxy Coated	Pound	440

Reinforcement bars designated (E) shall be epoxy coated.

Quantities shown are calculated for "One" abutment only

REVISIONS	
NAME	DATE

ILLINOIS DEPARTMENT OF TRANSPORTATION
PROPOSED DECK DETAILS
 FAP 330 (IL 17) SECTION (1R-B)I-3
 KANKAKEE COUNTY
 STA. 228+10.95
 SN 046-0039 (EB) & SN 046-0040 (WB)

Mar 05, 2008 - 08:39:51 AM
 c:\pro\ecrs\cma\In09\cm303\detail1.s.dgn