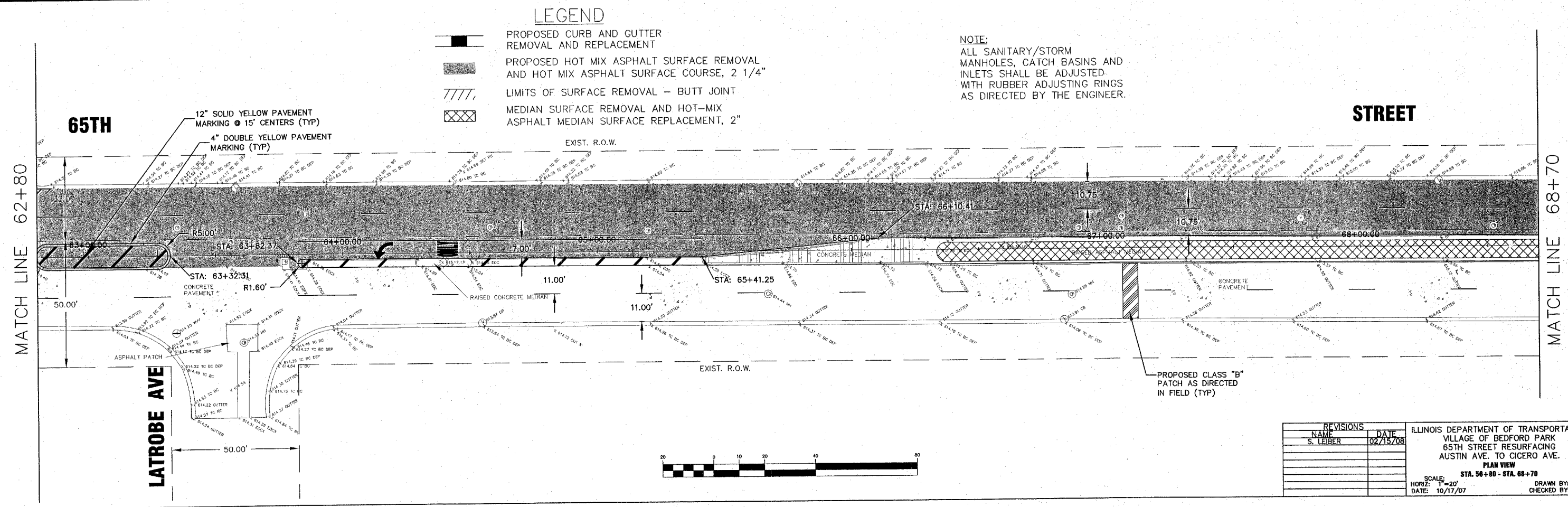
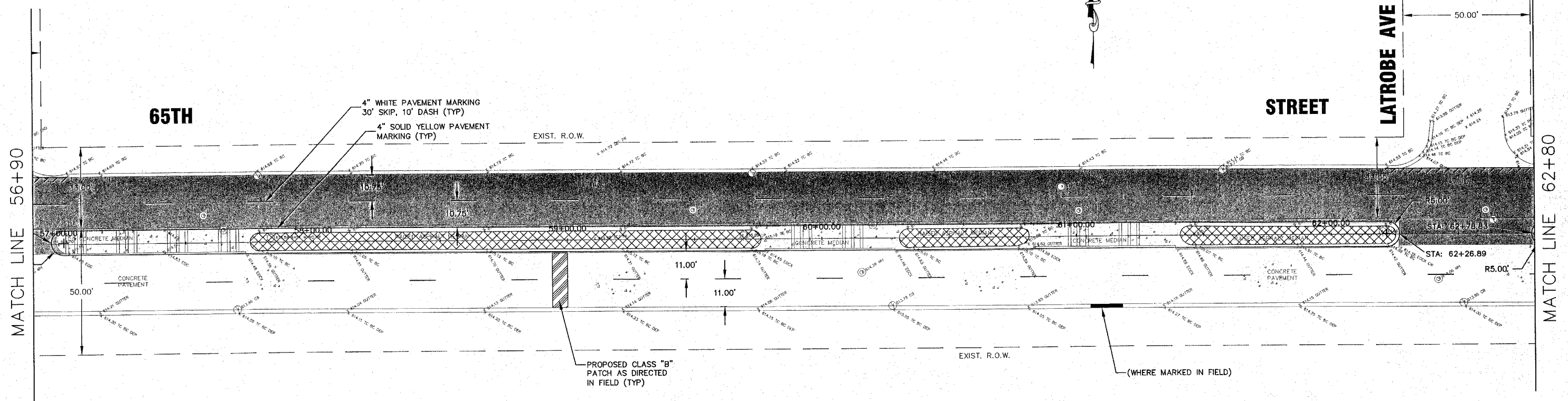


FAU RTE.	SECTION	COUNTY	TOTAL SHEETS	SHEET NO.
1524	08-00027-00-RS	COOK	15	8
STA. 10+00		TO STA. 88+81.23		
FED. ROAD DIST. NO.		ILLINOIS	FED. AID PROJECT	
CONTRACT NO. 63017				



- LEGEND**
- PROPOSED CURB AND GUTTER REMOVAL AND REPLACEMENT
 - PROPOSED HOT MIX ASPHALT SURFACE REMOVAL AND HOT MIX ASPHALT SURFACE COURSE, 2 1/4"
 - LIMITS OF SURFACE REMOVAL - BUTT JOINT
 - MEDIAN SURFACE REMOVAL AND HOT-MIX ASPHALT MEDIAN SURFACE REPLACEMENT, 2"

NOTE:
ALL SANITARY/STORM MANHOLES, CATCH BASINS AND INLETS SHALL BE ADJUSTED WITH RUBBER ADJUSTING RINGS AS DIRECTED BY THE ENGINEER.



nbe
Hoeflerle-Butler Engineering, Inc.
Consulting Civil Engineers - Land Surveyors
PROFESSIONAL DESIGN FIRM LICENSE NO. 084-000619
874 S. ROBERTS ROAD HICKORY HILLS, ILLINOIS 60457
(708) 599-6980 FAX (708) 599-8790

REVISIONS		DATE
NAME		
S. LEIBER		02/15/08

ILLINOIS DEPARTMENT OF TRANSPORTATION
VILLAGE OF BEDFORD PARK
65TH STREET RESURFACING
AUSTIN AVE. TO CICERO AVE.
PLAN VIEW
SCALE: STA. 56+90 - STA. 68+70
HORIZ: 1"=20'
DATE: 10/17/07
DRAWN BY: ECC
CHECKED BY: SAL