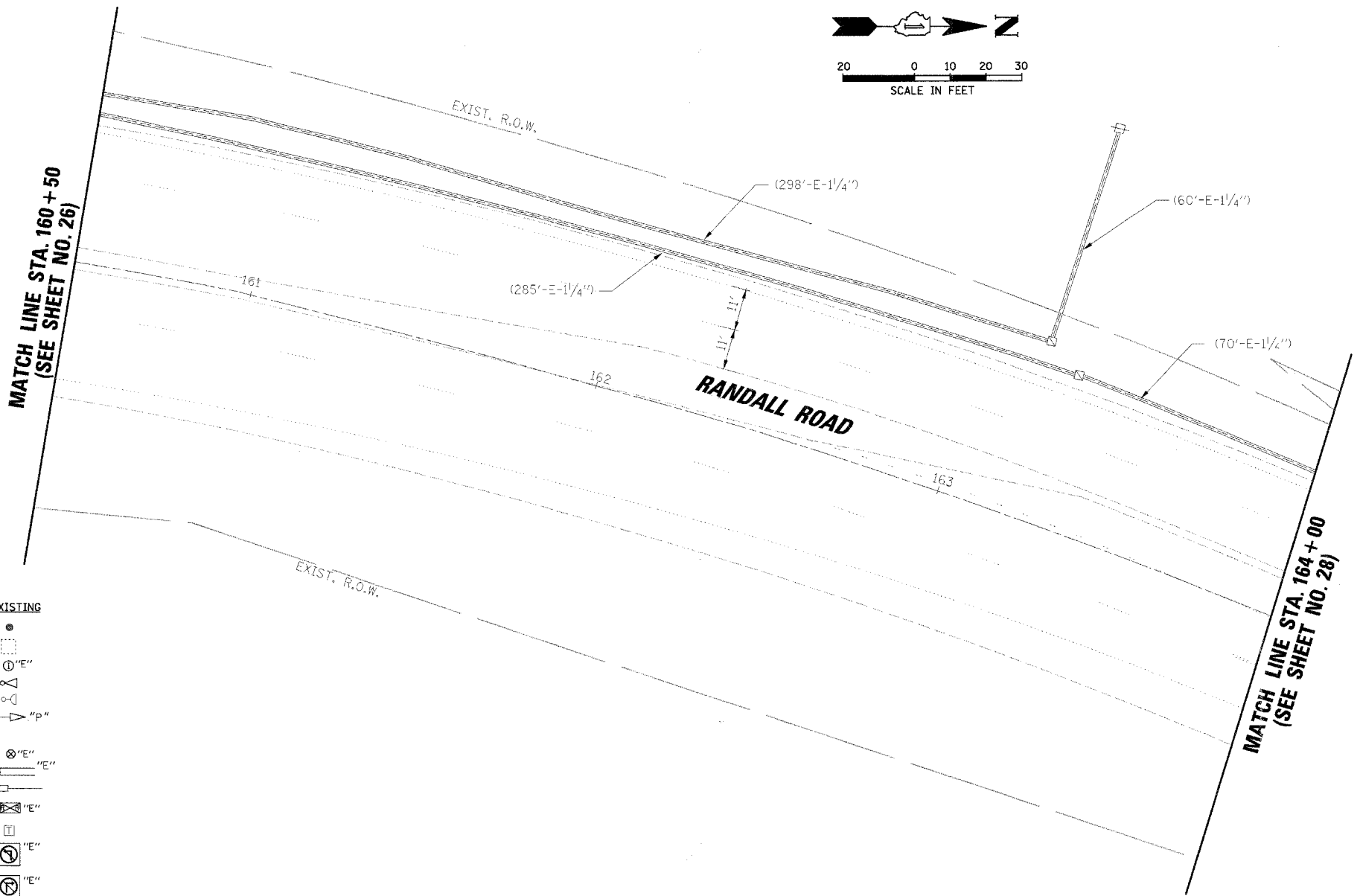
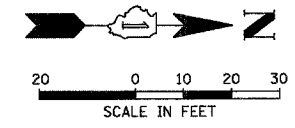


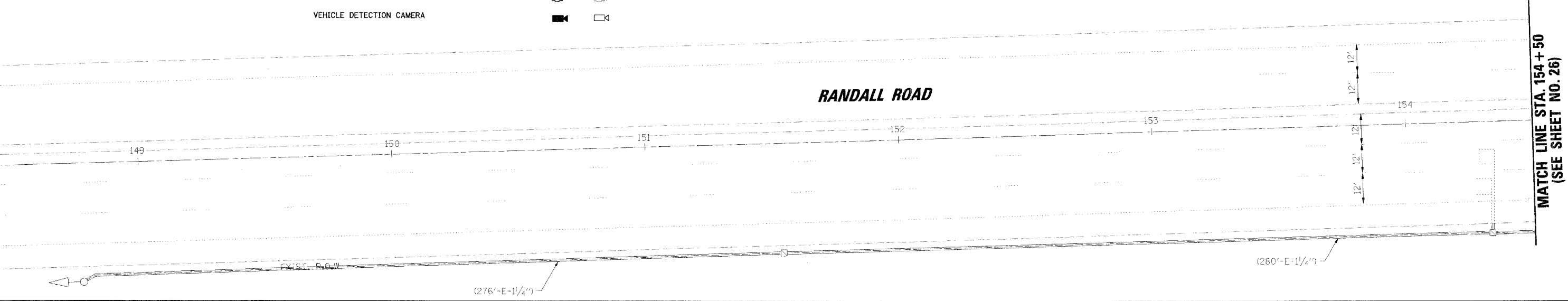
RESTORATION OF WORK AREA. RESTORATION OF THE TRAFFIC SIGNAL WORK AREA SHALL BE INCIDENTAL TO THE RELATED PAY ITEM SUCH AS FOUNDATION, CONDUIT, HANDHOLE, TRENCH AND BACKFILL, ETC., AND NO EXTRA COMPENSATION SHALL BE ALLOWED. ALL ROADWAY SURFACES SUCH AS SHOULDERS, MEDIANS, SIDEWALKS, PAVEMENT, ETC. SHALL BE REPLACED IN KIND. ALL DAMAGE TO MOWED LAWNS SHALL BE REPLACED WITH AN APPROVED SOD, AND ALL DAMAGE TO UNMOWED FIELDS SHALL BE SEEDDED IN ACCORDANCE WITH STANDARD SPECIFICATIONS 252 AND 250 RESPECTIVELY.

NOTE:
THE TRAFFIC SIGNAL CONTROLLER EQUIPMENT FOR THIS PROJECT SHALL BE "EAGLE" TO MATCH THE EXISTING ADJACENT SYSTEM.



TRAFFIC SIGNAL LEGEND

PROPOSED	EXISTING	PROPOSED	EXISTING
CONTROLLER CABINET		PEDESTRIAN PUSHBUTTON DETECTOR	
SERVICE INSTALLATION		DETECTOR LOOP	
SIGNAL HEAD		CAST IRON JUNCTION BOX	
SIGNAL HEAD WITH BACKPLATE		EMERGENCY VEHICLE LIGHT DETECTOR	
SIGNAL HEAD, PEDESTRIAN		CONFIRMATION BEACON	
SIGNAL POST		SIGNAL HEAD OPTICALLY PROGRAMMED	
MAST ARM ASSEMBLY AND POLE, STEEL		CONDUIT SPLICE	
MAST ARM ASSEMBLY AND POLE, ALUMINUM		WOOD POLE	
COMBINATION MAST ARM ASSEMBLY AND POLE, STEEL WITH LUMINAIRE		RACEWAY FOR MAGNETIC DETECTOR, TYPE I OR TYPE II	
UNIT DUCT	UD	VEHICLE DETECTOR, NON COMPENSATED MAGNETIC TYPE	
COMMON TRENCH	CT	RAILROAD CONTROL CABINET	
HANDHOLE		TELEPHONE CONNECTION	
HEAVY DUTY HANDHOLE		ILLUMINATED SIGN "NO LEFT TURN"	
DOUBLE HANDHOLE		ILLUMINATED SIGN "NO RIGHT TURN"	
G.S. CONDUIT IN TRENCH (T) OR PUSHED (P)		UNINTERRUPTABLE POWER SUPPLY	
		DOMI CAMERA (PAN/TILT/ZOOM)	
		VEHICLE DETECTION CAMERA	



DATE	BY	DATE	BY
DATE	BY	DATE	BY

PROFILE	DATE	BY

PLAN	DATE	BY

FILE NAME = N:\kane\count\070616\Traffic\4002_284.bdg

USER NAME = MWILLIAM
 PLOT SCALE = 20"
 PLOT DATE = 1/29/2008

DESIGNED -
 DRAWN -
 CHECKED -
 DATE -

REVISED -
 REVISED -
 REVISED -

**STATE OF ILLINOIS
DEPARTMENT OF TRANSPORTATION**

TRAFFIC SIGNAL MODIFICATION PLAN
 RANDALL ROAD AT U.S. 20 RAMPS A & B (FOOTHILL RD.)

F.A.P. RTE. 336	SECTION 06-00346-00-TL	COUNTY KANE	TOTAL SHEETS 69	SHEET NO. 27
CONTRACT NO. 63011				
FED. ROAD DIST. NO. ILLINOIS FED. AID PROJECT				

SCALE: