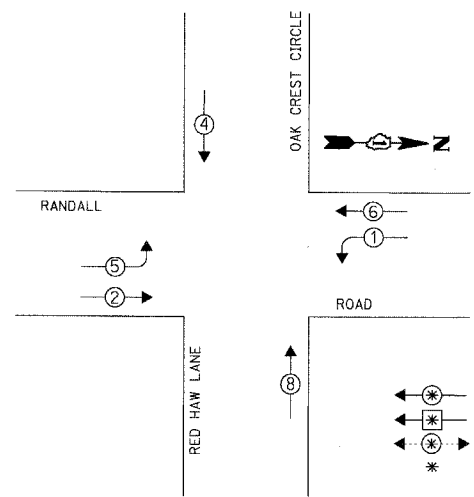


DATE: _____ BY: _____
 SURVEYED: _____ PLOTTED: _____ CHECKED: _____
 PROFILE: _____ NOTED: _____ B.M. NOTED: _____
 STRUCTURE NOTATIONS: CPAD

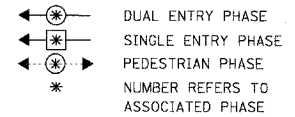
CHRISTOPHER B. BURKE ENGINEERING LTD.
 9575 West Higgins Road, Suite 600
 Rosemont, Illinois 60018
 (847) 823-0500

CONTROLLER SEQUENCE



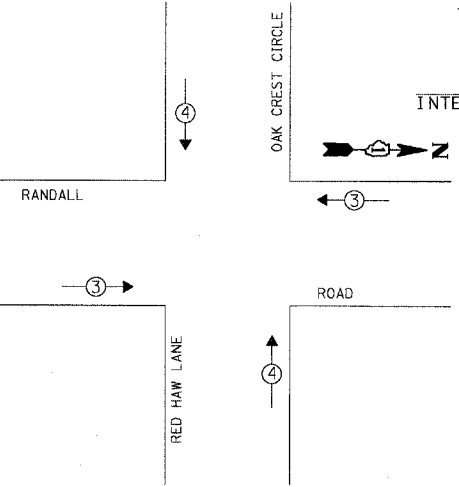
RESTORATION OF WORK AREA. RESTORATION OF THE TRAFFIC SIGNAL WORK AREA SHALL BE INCIDENTAL TO THE RELATED PAY ITEM SUCH AS FOUNDATION, CONDUIT, HANDHOLE, TRENCH AND BACKFILL, ETC., AND NO EXTRA COMPENSATION SHALL BE ALLOWED. ALL ROADWAY SURFACES SUCH AS SHOULDERS, MEDIANS, SIDEWALKS, PAVEMENT, ETC. SHALL BE REPLACED IN KIND. ALL DAMAGE TO MOWED LAWNS SHALL BE REPLACED WITH AN APPROVED SOD, AND ALL DAMAGE TO UNMOWED FIELDS SHALL BE SEEDDED IN ACCORDANCE WITH STANDARD SPECIFICATIONS 252 AND 250 RESPECTIVELY.

LEGEND



PHASE DESIGNATION DIAGRAM

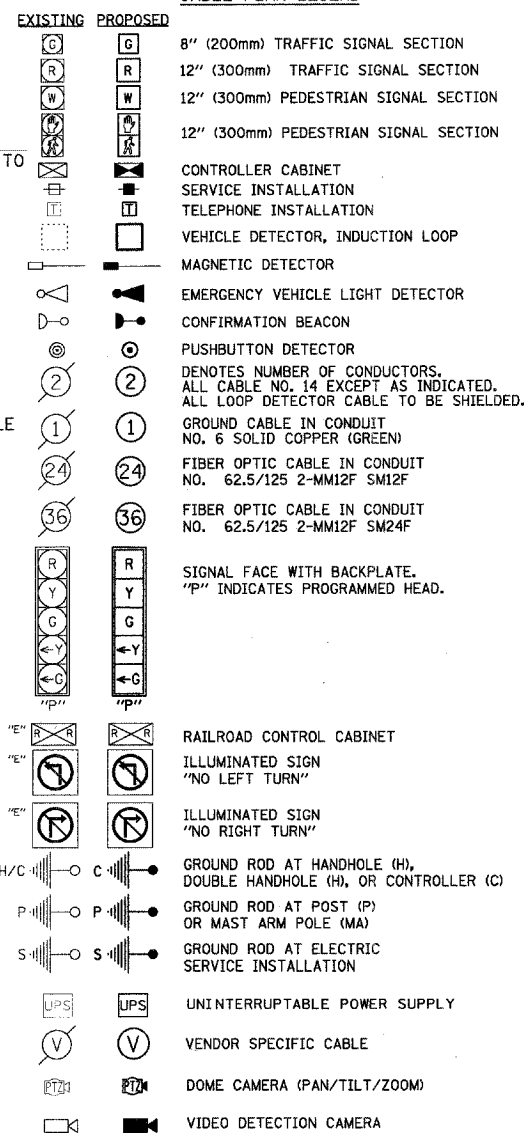
EMERGENCY VEHICLE PREEMPTION SEQUENCE



EXISTING EMERGENCY VEHICLE PREEMPTORS

EMERGENCY VEHICLE PREEMPTOR	3	4
MOVEMENT	←	↑

CABLE PLAN LEGEND



SCHEDULE OF QUANTITIES

ITEM	UNIT	TOTAL
MAINTENANCE OF EXISTING TRAFFIC SIGNAL INSTALLATION	EACH	1
FULL-ACTUATED CONTROLLER IN EXISTING CABINET, SPECIAL	EACH	1
MODIFY EXISTING CONTROLLER CABINET	EACH	1
REMOVE EXISTING TRAFFIC SIGNAL EQUIPMENT	EACH	1
RE-OPTIMIZE TRAFFIC SIGNAL SYSTEM LEVEL II	EACH	1
UNINTERRUPTIBLE POWER SUPPLY	EACH	1
ETHERNET KIT	EACH	1
CONFLICT MONITOR	EACH	1

CONSTRUCTION NOTES:

- REPLACE EXISTING CONTROLLER AND CONFLICT MONITOR.
- INSTALL ETHERNET KIT.
- INSTALL UPS UNIT IN SIDE MOUNTED CABINET ATTACHED TO EXISTING TRAFFIC SIGNAL CABINET.

THE FOLLOWING ITEMS SHALL BE REMOVED BY THE CONTRACTOR AND SHALL BE DISPOSED OF BY THEM OUTSIDE THE RIGHT-OF-WAY AT THEIR EXPENSE. THE SALVAGE VALUE OF THE REMOVED EQUIPMENT SHALL BE REFLECTED IN THE CONTRACT BID PRICE.

1 EACH CONTROLLER AND CONFLICT MONITOR

I.D.O.T. TRAFFIC SIGNAL INSTALLATION ELECTRICAL SERVICE REQUIREMENTS

TYPE	NO. OF LAMPS	WATTAGE X INCAND. LED X % OPERATION	TOTAL WATTAGE
SIGNAL (RED)	12	17	102.00
(YELLOW)	12	25	75.00
(GREEN)	12	15	45.00
ARROW	8	12	9.60
PED. SIGNAL	-	25	-
CONTROLLER	1	100	100.00
ILLUM. SIGN	-	25	-
VIDEO SYSTEM	-	150	-
FLASHER	-	0.50	-

ENERGY COSTS TO: TOTAL = 331.60
 KANE COUNTY DIVISION OF TRANSPORTATION
 41W011 BURLINGTON ROAD
 ST. CHARLES, IL 60175
 ENERGY SUPPLY: CONTACT: MIKE WIDHALM
 PHONE: (847) 608-2376
 COMPANY: COMED

FOUNDATION (DEPTH)	FT. (m)	CABLE SLACK	FT. (m)	VERTICAL	FT. (m)
TYPE A - POST	4 (1.2)	HANDHOLE	6.5 (2.0)	ALL FOUNDATIONS	3.5 (1.0)
D - CONTROLLER	4 (1.2)	DOUBLE HANDHOLE	13 (4.0)	MAST ARM (L) POLE	20'+L-2' = (6m+L-0.6m)
E - M. ARM POLE	10 (3.0)	SIGNAL POST	2 (1.0)	BRACKET MOUNTED	13 (4.0)
24" (600mm)	10 (3.0)	CONTROLLER CAB.	1 (0.5)	PED. PUSHBUTTON	4 (1.2)
30" (750mm)	15 (4.6)	FIBER OPTIC	13 (4.0)	ELECTRIC SERVICE	13.5 (4.1)
36" (900mm)	15 (4.6)	ELECTRIC SERVICE	1 (0.5)	SERVICE TO GROUND	13.5 (4.1)
		GROUND CABLE	1 (0.5)	POST MOUNTED	6 (1.8)

NOTE:
 THE TRAFFIC SIGNAL CONTROLLER EQUIPMENT FOR THIS PROJECT SHALL BE "EAGLE" TO MATCH THE EXISTING ADJACENT SYSTEM.