

F.A.P. RTE.	SECTION	COUNTY	TOTAL SHEETS	SHEET NO.
336	06-00346-00-TL	KANE	69	1
FED. ROAD DIST. NO. 1 ILLINOIS		FED. AID PROJECT		

**INDEX OF SHEETS**

SHEET NO.	DESCRIPTION
1	TITLE SHEET
2-3	SUMMARY OF QUANTITIES
4	RANDALL ROAD AT RED HAW LANE SCHEDULE OF QUANTITIES, CABLE PLAN AND PHASE DESIGNATION DIAGRAM
5	RANDALL ROAD AT CRANE ROAD TEMPORARY TRAFFIC SIGNAL AND REMOVE TRAFFIC SIGNAL EQUIPMENT
6	RANDALL ROAD AT CRANE ROAD TRAFFIC SIGNAL INSTALLATION PLAN
7	RANDALL ROAD AT CRANE ROAD SCHEDULE OF QUANTITIES, CABLE PLAN AND PHASE DESIGNATION DIAGRAM
8	RANDALL ROAD AT RED GATE ROAD EXISTING CABLE PLAN
9	RANDALL ROAD AT BOLCUM ROAD/RIDGEWOOD DRIVE SCHEDULE OF QUANTITIES, CABLE PLAN AND PHASE DESIGNATION DIAGRAM
10	RANDALL ROAD AT SILVER GLEN ROAD TRAFFIC SIGNAL MODIFICATION PLAN
11	RANDALL ROAD AT SILVER GLEN ROAD SCHEDULE OF QUANTITIES, CABLE PLAN AND PHASE DESIGNATION DIAGRAM
12	RANDALL ROAD AT COMMERCIAL ENTRANCE SCHEDULE OF QUANTITIES, CABLE PLAN AND PHASE DESIGNATION DIAGRAM
13	RANDALL ROAD AT THORNWOOD AVENUE SCHEDULE OF QUANTITIES, CABLE PLAN AND PHASE DESIGNATION DIAGRAM
14	RANDALL ROAD AT MCDONALD ROAD SCHEDULE OF QUANTITIES, CABLE PLAN AND PHASE DESIGNATION DIAGRAM
15	MCDONALD ROAD AT ACCESS DRIVE SCHEDULE OF QUANTITIES, CABLE PLAN AND PHASE DESIGNATION DIAGRAM
16	RANDALL ROAD AT GYORR ROAD SCHEDULE OF QUANTITIES, CABLE PLAN AND PHASE DESIGNATION DIAGRAM
17-18	RANDALL ROAD AT HOPPS ROAD TRAFFIC SIGNAL MODIFICATION PLAN
19	RANDALL ROAD AT HOPPS ROAD SCHEDULE OF QUANTITIES, CABLE PLAN AND PHASE DESIGNATION DIAGRAM
20	RANDALL ROAD AT BOWES ROAD SCHEDULE OF QUANTITIES, CABLE PLAN AND PHASE DESIGNATION DIAGRAM
21	RANDALL ROAD AT COLLEGE GREEN DRIVE SCHEDULE OF QUANTITIES, CABLE PLAN AND PHASE DESIGNATION DIAGRAM
22	RANDALL ROAD AT SOUTH STREET SCHEDULE OF QUANTITIES, CABLE PLAN AND PHASE DESIGNATION DIAGRAM
23	RANDALL ROAD AT WELD ROAD SCHEDULE OF QUANTITIES, CABLE PLAN AND PHASE DESIGNATION DIAGRAM
24	RANDALL ROAD AT U.S. 20 RAMP C AND D TRAFFIC SIGNAL MODIFICATION PLAN
25	RANDALL ROAD AT U.S. 20 RAMP C AND D SCHEDULE OF QUANTITIES, CABLE PLAN AND PHASE DESIGNATION DIAGRAM
26-28	RANDALL ROAD AT U.S. 20 RAMP A AND B TRAFFIC SIGNAL MODIFICATION PLAN
29	RANDALL ROAD AT U.S. 20 RAMP A AND B SCHEDULE OF QUANTITIES, CABLE PLAN AND PHASE DESIGNATION DIAGRAM
30	RANDALL ROAD AT HIGHLAND AVENUE SCHEDULE OF QUANTITIES, CABLE PLAN AND PHASE DESIGNATION DIAGRAM
31	RANDALL ROAD AT ROYAL BOULEVARD TRAFFIC SIGNAL MODIFICATION PLAN
32	RANDALL ROAD AT ROYAL BOULEVARD SCHEDULE OF QUANTITIES, CABLE PLAN AND PHASE DESIGNATION DIAGRAM
33-34	RANDALL ROAD AT BIG TIMBER ROAD TRAFFIC SIGNAL MODIFICATION PLAN
35	RANDALL ROAD AT BIG TIMBER ROAD SCHEDULE OF QUANTITIES, CABLE PLAN AND PHASE DESIGNATION DIAGRAM
35	RANDALL ROAD AT FOX LANE SCHEDULE OF QUANTITIES, CABLE PLAN AND PHASE DESIGNATION DIAGRAM
37	RANDALL ROAD AT ALF LANE SCHEDULE OF QUANTITIES, CABLE PLAN AND PHASE DESIGNATION DIAGRAM
38	RANDALL ROAD AT I-90 RAMP B AND D TRAFFIC SIGNAL MODIFICATION PLAN
39	RANDALL ROAD AT I-90 RAMP B AND D SCHEDULE OF QUANTITIES, CABLE PLAN AND PHASE DESIGNATION DIAGRAM
40-41	RANDALL ROAD AT I-90 RAMP A AND C TRAFFIC SIGNAL MODIFICATION PLAN
42	RANDALL ROAD AT I-90 RAMP A AND C SCHEDULE OF QUANTITIES, CABLE PLAN AND PHASE DESIGNATION DIAGRAM
43	RANDALL ROAD AT POINT BOULEVARD SCHEDULE OF QUANTITIES, CABLE PLAN AND PHASE DESIGNATION DIAGRAM
44	RANDALL ROAD AT JOY LANE/NORTHWEST PARKWAY SCHEDULE OF QUANTITIES, CABLE PLAN AND PHASE DESIGNATION DIAGRAM
45-46	RANDALL ROAD AT IL ROUTE 72 TRAFFIC SIGNAL MODIFICATION PLAN
47	RANDALL ROAD AT IL ROUTE 72 SCHEDULE OF QUANTITIES, CABLE PLAN AND PHASE DESIGNATION DIAGRAM
48-53	INTERCONNECT PLANS
54-56	INTERCONNECT SCHEMATIC
57-60	ETHERNET SYSTEM SCHEMATIC
61-63	FIBER OPTIC TERMINATION SCHEMATIC
64	STREET NAME SIGNS
65-68	DISTRICT 1 STANDARD TRAFFIC SIGNAL DESIGN DETAILS
69	VIDEO MOUNTING DETAILS

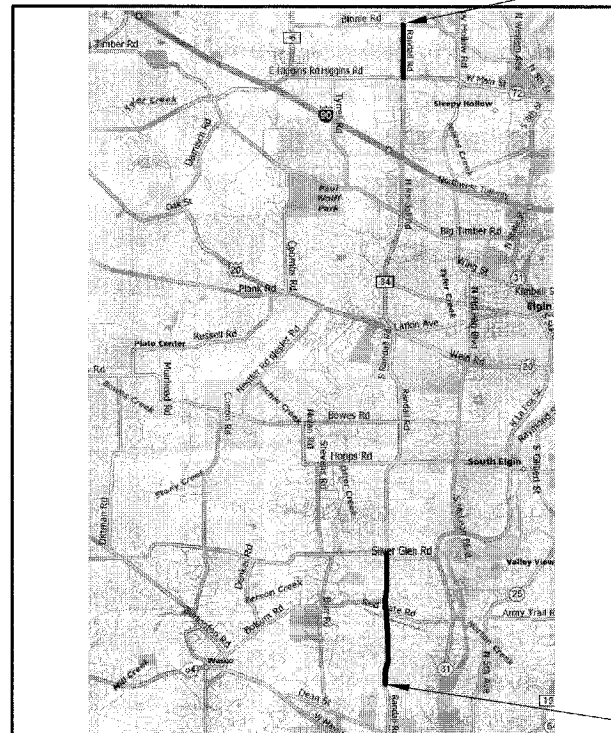
STATE OF ILLINOIS  
DEPARTMENT OF TRANSPORTATION  
DIVISION OF HIGHWAYS  
**PLANS FOR PROPOSED  
TRAFFIC SIGNAL INTERCONNECT**

DISTRICT 1

**CONGESTION MITIGATION AIR QUALITY  
F.A.P. 336 RANDALL ROAD  
FROM RED HAW LANE TO SILVER GLEN ROAD  
AND  
FROM IL RTE 72 TO BINNIE ROAD  
FEDERAL PROJECT NO.: CMM-8003(759)  
SECTION 06-00346-00-TL  
KANE COUNTY  
JOB NO: C-91-153-07**



PROJECT ENDS  
RANDALL ROAD AT BINNIE ROAD

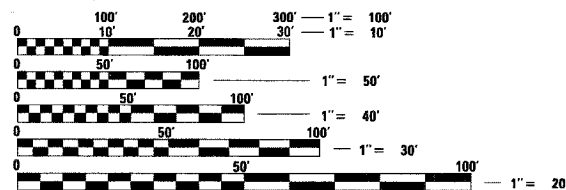


PROJECT BEGINS  
RANDALL ROAD AT RED HAW LANE

STANDARD NO.	DESCRIPTION
STD. 000001-05	STANDARD SYMBOLS, ABBREVIATIONS AND PATTERNS
STD. 701011-01	OFF ROAD MOVING OPERATIONS, 2L 2W, DAY ONLY
STD. 701011-01	OFF ROAD OPERATIONS, MULTILANE, 15' TO 24' FROM PAVEMENT EDGE
STD. 701106-01	OFF ROAD OPERATIONS, MULTILANE, MORE THAN 15' AWAY
STD. 701301-02	LANE CLOSURE, 2L, 2W, SHORT TIME OPERATIONS
STD. 701601-05	URBAN LANE CLOSURE, MULTILANE, 2W WITH NON-TRAVERSABLE MEDIAN
STD. 701602-03	URBAN LANE CLOSURE, MULTILANE, 2W WITH BIDIRECTIONAL LEFT TURN LANE
STD. 701701-05	URBAN LANE CLOSURE, MULTI-LANE INTERSECTION
STD. 701801-03	LANE CLOSURE, MULTI-LANE, 1W OR 2W CROSSWALK OR SIDEWALK CLOSURE
STD. 701901	TRAFFIC CONTROL DEVICES
STD. 720001	SIGN PANEL MOUNTING DETAILS
STD. 720006	SIGN PANEL ERECTION DETAILS
STD. 780001-C1	TYPICAL PAVEMENT MARKINGS
STD. 814001-01	CONCRETE HANDHOLES
STD. 814006-01	DOUBLE HANDHOLES
STD. 857001	STANDARD PHASE DESIGNATION DIAGRAMS AND PHASE SEQUENCES
STD. 862001	UNINTERRUPTABLE POWER SUPPLY (UPS)
STD. 877001-03	STEEL MAST ARM ASSEMBLY AND POLE 16' THROUGH 55'
STD. 878001-06	CONCRETE FOUNDATION DETAILS
STD. 880006	TRAFFIC SIGNAL MOUNTING DETAILS

**LOCATION MAP**

LENGTH OF IMPROVEMENTS =  
4.0 MILES



FULL SIZE PLANS HAVE BEEN PREPARED USING STANDARD ENGINEERING SCALES. REDUCED SIZED PLANS WILL NOT CONFORM TO STANDARD SCALES. IN MAKING MEASUREMENTS ON REDUCED PLANS, THE ABOVE SCALES MAY BE USED.

J.U.L.I.E.  
JOINT UTILITY LOCATION INFORMATION FOR EXCAVATION  
1-800-892-0123

**CONTRACT NO. 63011**

**ILLINOIS DEPARTMENT OF TRANSPORTATION**

APPROVED JANUARY 30 20 08  
*[Signature]* KANE COUNTY ENGINEER  
LOCAL AGENCY, POSITION

PASSED FEBRUARY 13 2008  
*[Signature]* DISTRICT ONE ENGINEER OF LOCAL ROADS & STREETS

RELEASING FOR BID  
BASED ON LIMITED REVIEW  
FEBRUARY 14, 20 08  
*[Signature]* DEPUTY DIRECTOR OF HIGHWAYS, REGION ONE ENGINEER

**PRINTED BY THE AUTHORITY  
OF THE STATE OF ILLINOIS**

*[Signature]* 2-7-2008  
ENGINEER DATE

GEORGE M. ZIEGLER  
ILLINOIS REGISTRATION No. 062-45853  
EXPIRATION DATE: 11-30-2009  
PROFESSIONAL DESIGN FIRM No.: 184-001742  
EXPIRATION DATE: 04-30-2009

**CHRISTOPHER B. BURKE**  
ENGINEERING LTD.  
9575 West Higgins Road, Suite 600  
Rosemont, Illinois 60018  
(847) 823-0500

**FEDERAL AID DESIGN ENGINEER: PHIL MARCYN**  
(847) 705-4189