

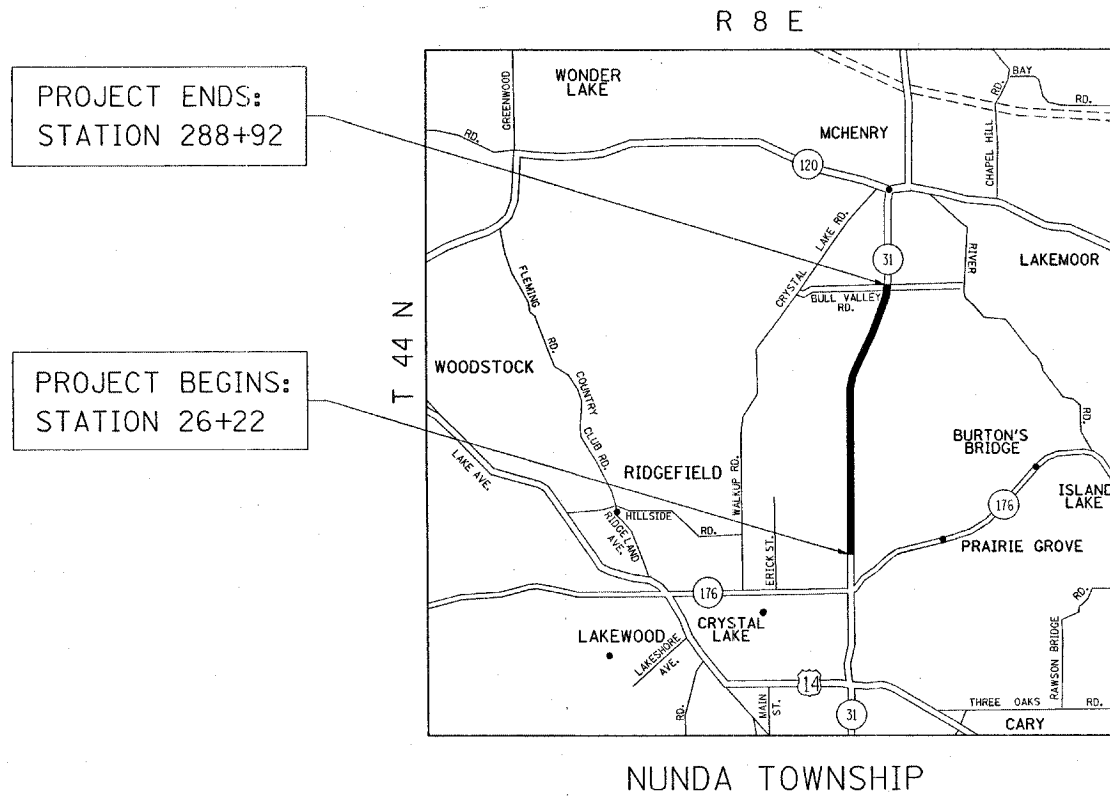
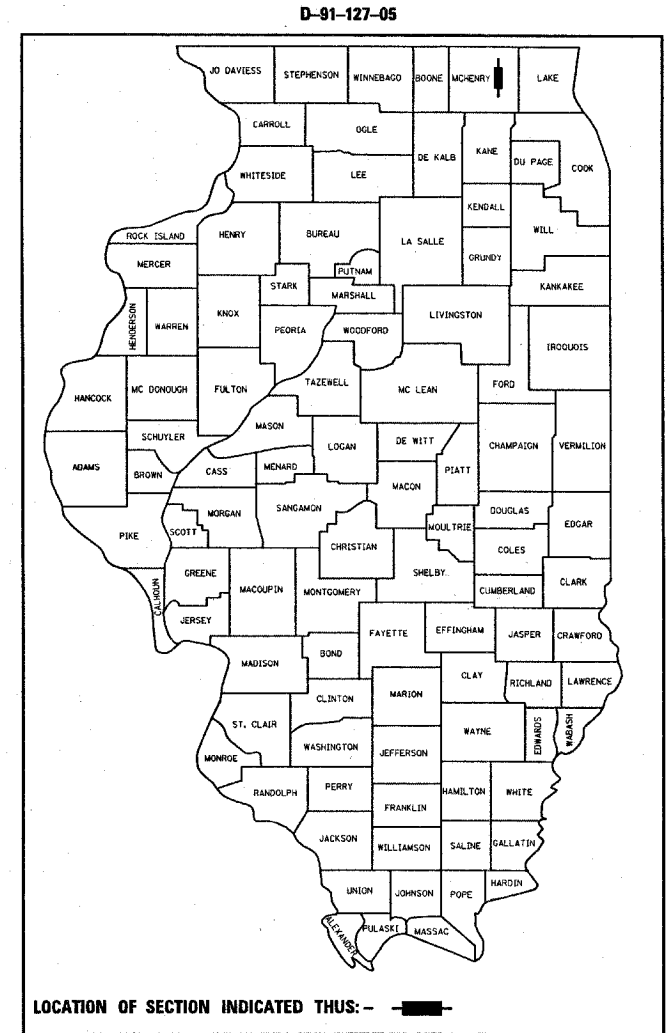
F.A.P. RTE.	SECTION	COUNTY	TOTAL SHEETS	SHEET NO.
336	112RS-4	MCHENRY	31	1
FED. ROAD DIST. NO. 1		ILLINOIS	CONTRACT NO. 62913	

STATE OF ILLINOIS  
DEPARTMENT OF TRANSPORTATION  
DIVISION OF HIGHWAYS  
**PROPOSED HIGHWAY PLANS**

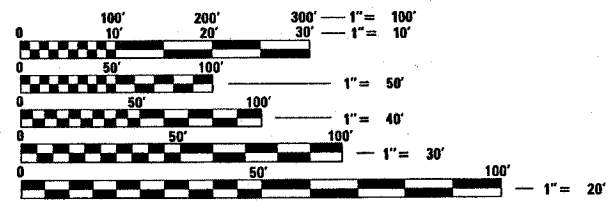
FOR INDEX OF SHEETS, SEE SHEET NO. 2

PROJECT LOCATED IN THE CITIES OF CRYSTAL LAKE AND MCHENRY AND THE VILLAGE OF PRAIRIE GROVE

F.A.P. ROUTE 336: IL 31  
IL 176 TO BULL VALLEY RD.  
SECTION: 112RS-4  
RESURFACING (MAINTENANCE)  
PROJECT: ACNHF-0336(047)  
MCHENRY COUNTY  
C-91-127-05



TRAFFIC DATA  
2005 ADT = 24,800  
POSTED SPEED = 40-55 MPH



FULL SIZE PLANS HAVE BEEN PREPARED USING STANDARD ENGINEERING SCALES. REDUCED SIZED PLANS WILL NOT CONFORM TO STANDARD SCALES. IN MAKING MEASUREMENTS ON REDUCED PLANS, THE ABOVE SCALES MAY BE USED.

J.U.L.I.E.  
JOINT UTILITY LOCATION INFORMATION FOR EXCAVATION  
1-800-892-0123  
OR 811

PROJECT ENGINEER: JENPAI CHANG (847) 705-4432  
PROJECT MANAGER: KEN ENG

GROSS AND NET LENGTH OF PROJECT = 26,270 FEET (4.98 MILES)

CONTRACT NO. 62913

STATE OF ILLINOIS  
DEPARTMENT OF TRANSPORTATION  
DIVISION OF HIGHWAYS

SUBMITTED MARCH 31, 2008

*Diana M. D'Keefe*  
DEPUTY DIRECTOR OF HIGHWAYS, REGION ENGINEER

May 9, 2008  
*Eric E. Harrel*  
INTERIM ENGINEER OF DESIGN AND ENVIRONMENT

May 9, 2008  
*Christine M. Reed*  
DIRECTOR OF HIGHWAYS, CHIEF ENGINEER

**PRINTED BY THE AUTHORITY  
OF THE STATE OF ILLINOIS**