

F.A.P. RTE.	SECTION	COUNTY	TOTAL SHEETS	SHEET NO.
345	16-2-1-K-RS	COOK	31	1
FED. ROAD DIST. NO. 1	ILLINOIS	CONTRACT NO. 60E26		

STATE OF ILLINOIS
DEPARTMENT OF TRANSPORTATION
DIVISION OF HIGHWAYS

**PROPOSED
HIGHWAY PLANS**

F.A.P. ROUTE 345 /ELGIN-O'HARE (FRONTAGE ROAD)
SPRINGINGGUTH RD. TO WRIGHT BLVD.
SECTION: 16-2-1-K-RS
RESURFACING (MAINTENANCE)
COOK COUNTY
C-91-347-08

D-91-347-08

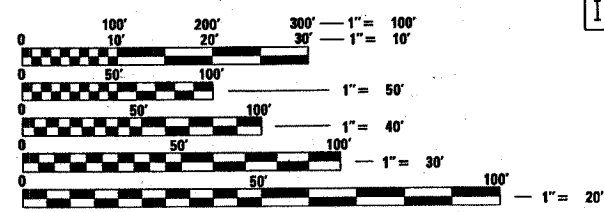


LOCATION OF SECTION INDICATED THUS: - ■ -

FOR INDEX OF SHEETS, SEE SHEET NO. 2

IMPROVEMENT IS LOCATED IN THE VILLAGE
OF SCHAUMBURG

DISTRICT ONE DESIGN PLAN PREPARATION ENGINEER:
KEN ENG (847) 705-4247

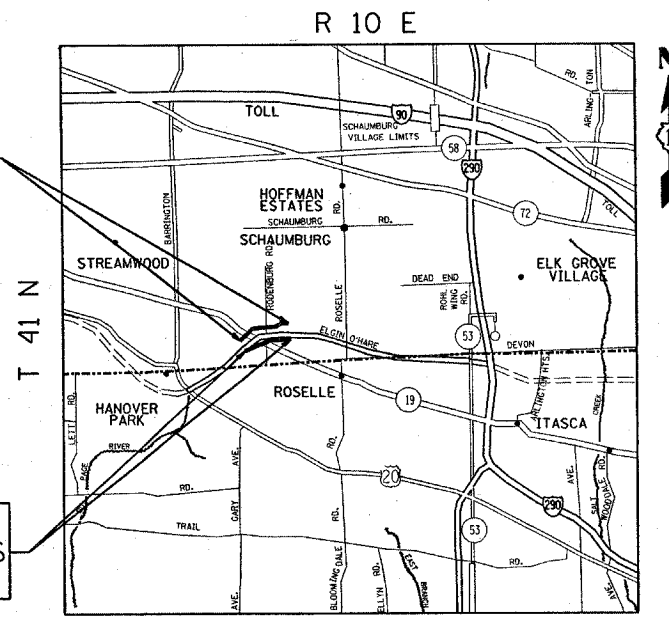


FULL SIZE PLANS HAVE BEEN PREPARED USING STANDARD
ENGINEERING SCALES. REDUCED SIZED PLANS WILL NOT
CONFORM TO STANDARD SCALES. IN MAKING MEASUREMENTS
ON REDUCED PLANS, THE ABOVE SCALES MAY BE USED.

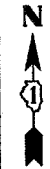
J.U.L.I.E.
JOINT UTILITY LOCATION INFORMATION FOR EXCAVATION
1-800-892-0123
OR 811

WB FRONTAGE RD
IMPROVEMENT BEGINS STA. 9+50
IMPROVEMENT ENDS STA 61+10

EB FRONTAGE RD
IMPROVEMENT BEGINS STA. 10+36
IMPROVEMENT ENDS STA 59+21



SCHAUMBURG TOWNSHIP



TRAFFIC DATA
SPEED LIMIT: 40 MPH
ADT: NOT COUNTED

PROJECT ENGINEER: ANA ABREU
PROJECT MANAGER: KEN ENG

CONTRACT NO. 60E26

GROSS LENGTH OF PROJECT = 10,045 FEET (1.9 MILES)
NET LENGTH OF PROJECT = 10,045 FEET (1.9 MILES)

STATE OF ILLINOIS
DEPARTMENT OF TRANSPORTATION
DIVISION OF HIGHWAYS

SUBMITTED March 26, 2008

Don Okin
DEPUTY DIRECTOR OF HIGHWAYS, REGION ENGINEER

May 9, 2008
Eric F. Harrod
Interim ENGINEER OF DESIGN AND ENVIRONMENT

May 9, 2008
Christina M. Reed
DIRECTOR OF HIGHWAYS, CHIEF ENGINEER

PRINTED BY THE AUTHORITY
OF THE STATE OF ILLINOIS