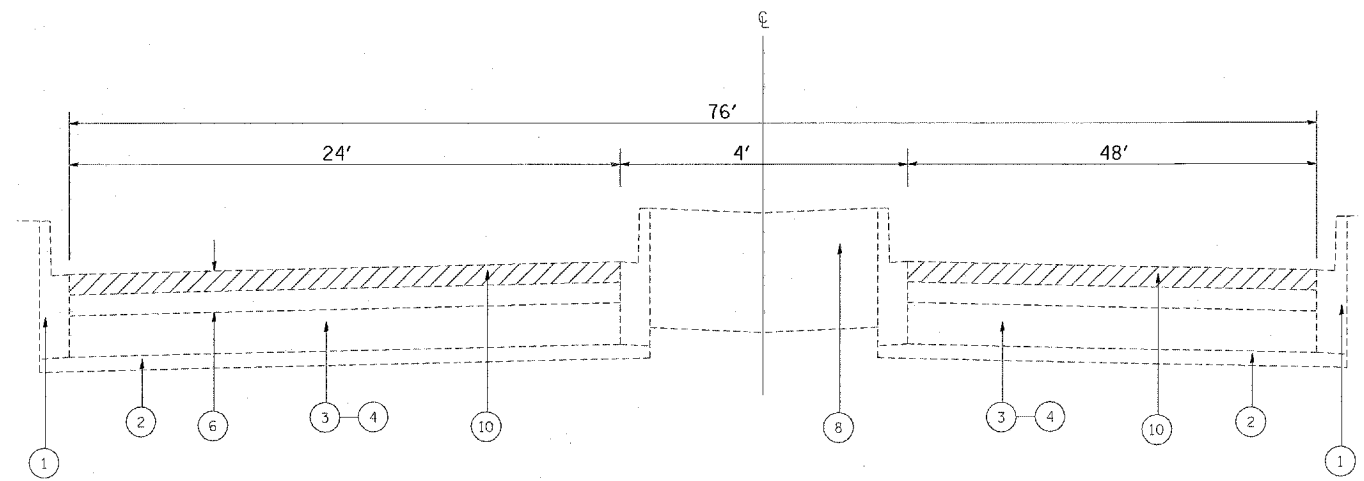
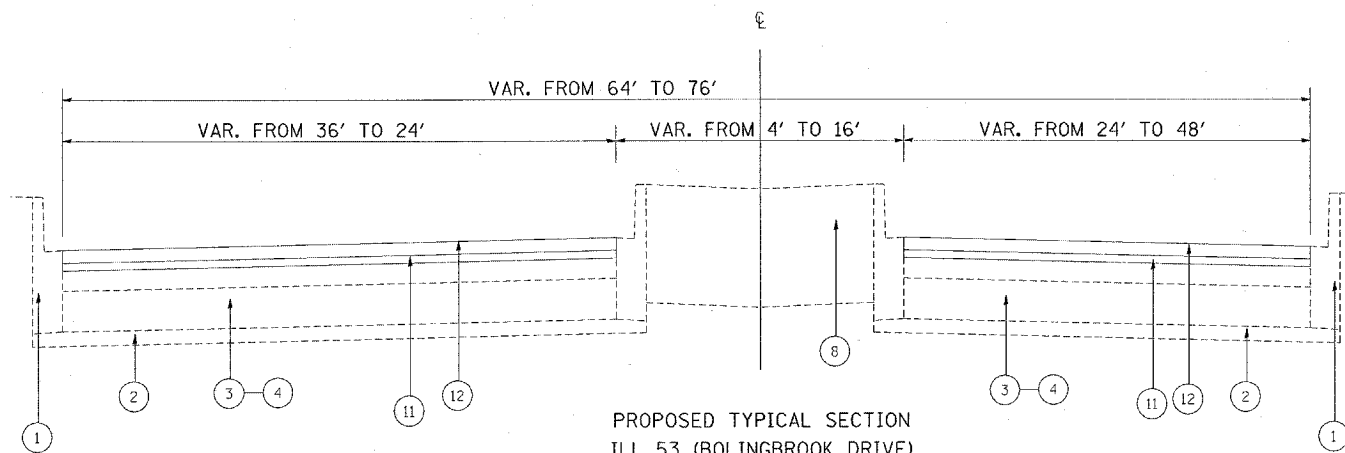


EXISTING TYPICAL SECTION  
ILL 53 (BOLINGBROOK DRIVE)  
STA. 88+91 TO STA. 90+84  
STA. 78+02 TO STA. 80+35  
STA. 168+31 TO STA. 169+68  
STA. 173+94 TO STA. 175+45  
STA. 178+07 TO STA. 179+47

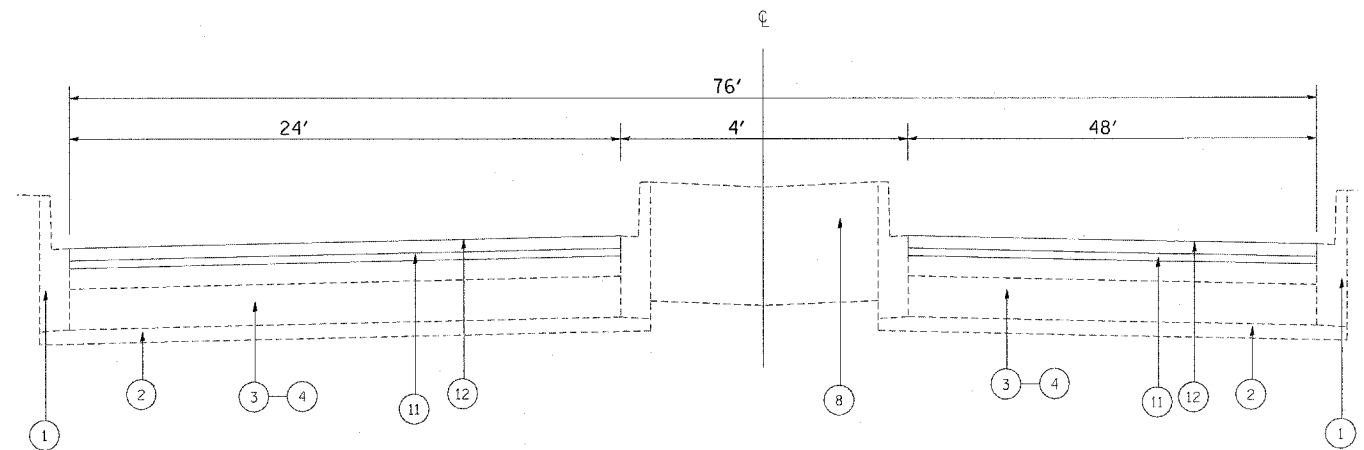


EXISTING TYPICAL SECTION  
ILL 53 (BOLINGBROOK DRIVE)  
STA. 76+64 TO STA. 78+02  
STA. 90+84 TO STA. 97+70\*\*\*  
STA. 169+68 TO STA. 172+00  
STA. 175+45 TO STA. 177+00  
STA. 179+47 TO STA. 181+00

\*\*\* (PAINTED MEDIAN BETWEEN STA. 96+53 AND STA. 97+70)



PROPOSED TYPICAL SECTION  
ILL 53 (BOLINGBROOK DRIVE)  
STA. 88+91 TO STA. 90+84  
STA. 78+02 TO STA. 80+35  
STA. 168+31 TO STA. 169+68  
STA. 173+94 TO STA. 175+45  
STA. 178+07 TO STA. 179+47



PROPOSED TYPICAL SECTION  
ILL 53 (BOLINGBROOK DRIVE)  
STA. 76+64 TO STA. 78+02  
STA. 90+84 TO STA. 97+70\*\*\*  
STA. 169+68 TO STA. 172+00  
STA. 175+45 TO STA. 177+00  
STA. 179+47 TO STA. 181+00

\*\*\* (PAINTED MEDIAN BETWEEN STA. 96+53 AND STA. 97+70)

**LEGEND**

- |                                                                                     |                                                                                |
|-------------------------------------------------------------------------------------|--------------------------------------------------------------------------------|
| ① EXISTING COMBINATION CONCRETE CURB AND GUTTER                                     | ⑧ EXISTING P.C. CONCRETE BARRIER MEDIAN (PLANTED MEDIAN)                       |
| ② EXISTING SUB-GRADE                                                                | ** ⑨ EXISTING ASPHALT MOUNTABLE MEDIAN                                         |
| ③ EXISTING HOT-MIX ASPHALT BASE COURSE 10"<br>(NOTE: BETWEEN STA. 117+49 TO 272+53) | ⑩ PROPOSED HOT-MIX ASPHALT SURFACE REMOVAL, 2 1/2"                             |
| ④ EXISTING PCC BASE COURSE 9"<br>(NOTE: BETWEEN 46+98 TO 100+96)                    | ⑪ PROPOSED POLYMERIZED LEVELING BINDER (MACHINE METHOD),<br>IL-4.75, N50, 3/4" |
| ⑤ EXISTING PCC BASE COURSE 10"                                                      | ⑫ PROPOSED POLYMERIZED HOT-MIX ASPHALT SURFACE COURSE,<br>MIX "F", N90, 1 3/4" |
| ⑥ EXISTING HOT-MIX ASPHALT OVERLAY                                                  |                                                                                |
| ⑦ EXISTING HMA SHOULDER 8"                                                          |                                                                                |

FILE NAME =  
c:\projects\116908\116908.dgn

USER NAME = abreugh  
PLOT SCALE = 50.0000' / 1" IN.  
PLOT DATE = 2/28/2008

DESIGNED -  
DRAWN -  
CHECKED -  
DATE -

REVISED -  
REVISED -  
REVISED -  
REVISED -

**STATE OF ILLINOIS  
DEPARTMENT OF TRANSPORTATION**

**ILL 53 (BOLINGBROOK DRIVE)  
TYPICAL SECTIONS**

SCALE: SHEET NO. OF SHEETS STA. 17+49 TO STA. 172+53

F.A.P. RTE. 870	SECTION 534 RS-3	COUNTY WILL	TOTAL SHEETS 41	SHEET NO. 8
CONTRACT NO. 60E08			ILLINOIS FED. AID PROJECT	