

| | | | | |
|-----------------------|-----------|--------------------|--------------|-----------|
| F.A.U. RTE. | SECTION | COUNTY | TOTAL SHEETS | SHEET NO. |
| 2660 | 540R-1-RS | COOK | 31 | 1 |
| FED. ROAD DIST. NO. 1 | ILLINOIS | CONTRACT NO. 60649 | | |

STATE OF ILLINOIS
DEPARTMENT OF TRANSPORTATION
DIVISION OF HIGHWAYS

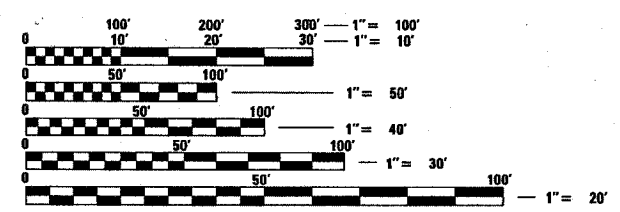
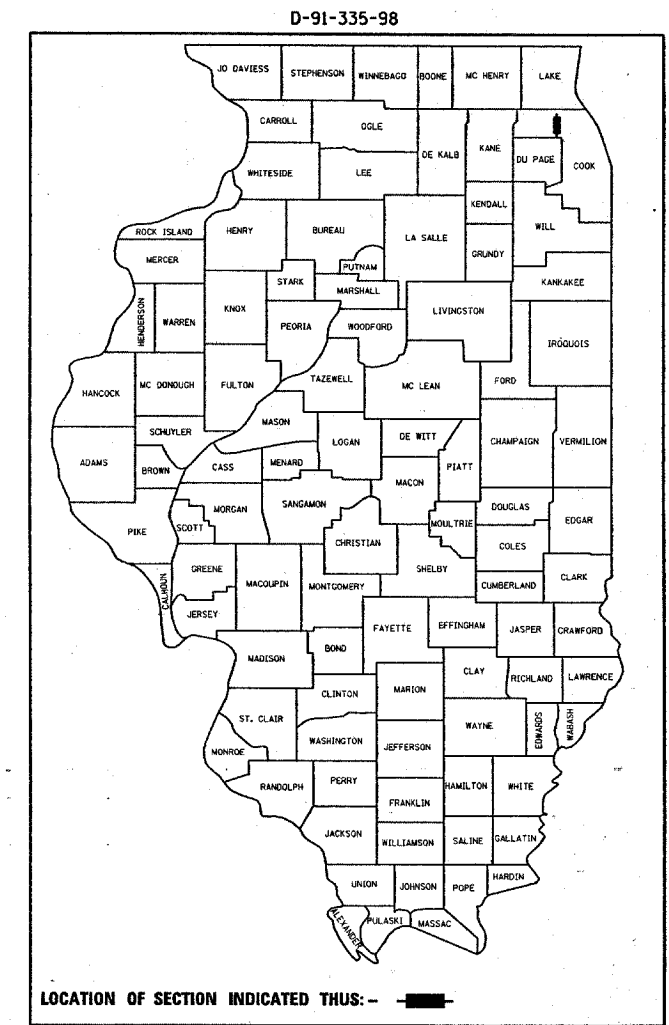
PROPOSED
HIGHWAY PLANS

FAU ROUTE 2660: BUSSE RD
IL 58 (GOLF RD) TO IL 72 (HIGGINS RD)
SECTION 540R-1-RS
PROJECT NO. ACM-2660(001)
RESURFACING (MAINTENANCE)
COOK COUNTY
C-91-335-98

FOR INDEX OF SHEETS, SEE SHEET NO. 2

THIS PROJECT IS LOCATED
 IN THE VILLAGES OF MOUNT PROSPECT
 AND ELK GROVE VILLAGE

TRAFFIC DATA:
 2007 ADT: 34,700
 SPEED LIMIT: 35 MPH TO 40 MPH

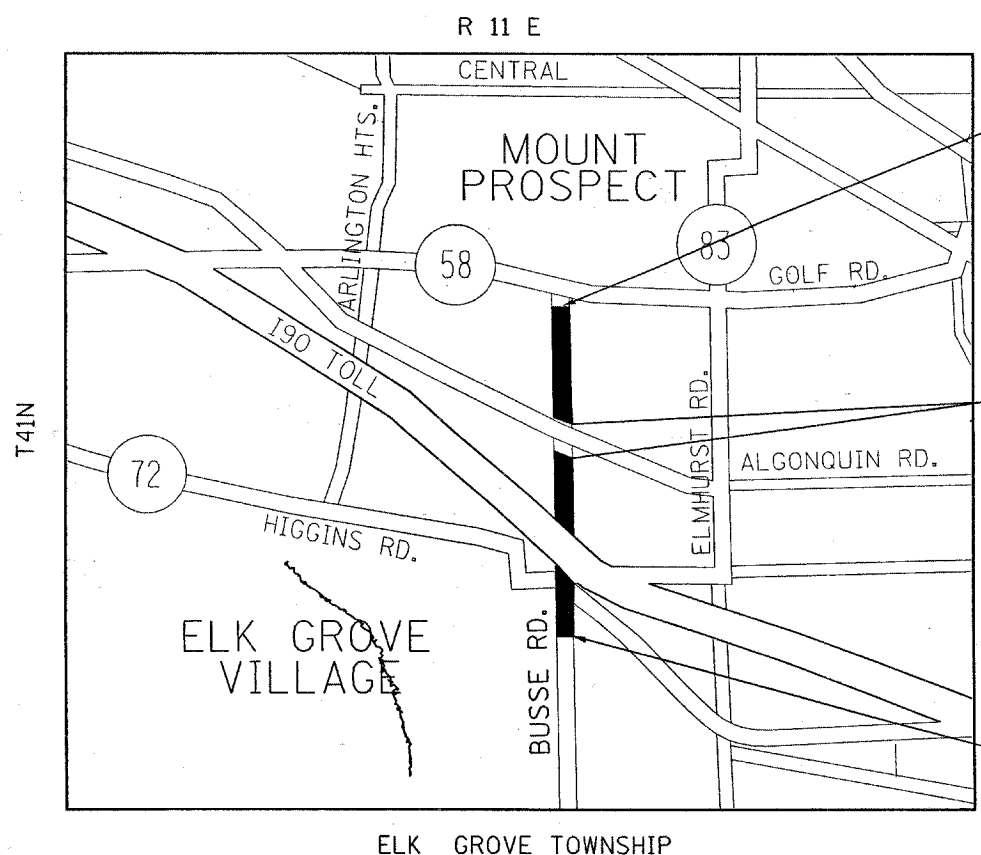


FULL SIZE PLANS HAVE BEEN PREPARED USING STANDARD ENGINEERING SCALES. REDUCED SIZED PLANS WILL NOT CONFORM TO STANDARD SCALES. IN MAKING MEASUREMENTS ON REDUCED PLANS, THE ABOVE SCALES MAY BE USED.

J.U.L.I.E.
 JOINT UTILITY LOCATION INFORMATION FOR EXCAVATION
 1-800-892-0123
 OR 811

PROJECT ENGINEER ROBERT BORO (847) 705-4178
 PROJECT MANAGER KEN ENG

CONTRACT NO. 60649



PROJECT ENDS
 STATION 258+09

OMISSION STATION 206+45
 TO STATION 216+56

PROJECT BEGINS
 STATION 162+02



T41N

ELK GROVE TOWNSHIP

GROSS LENGTH OF PROJECT = 9,607 FT = 1.82 MILES
 NET LENGTH OF PROJECT = 8,596 FT = 1.63 MILES

STATE OF ILLINOIS
 DEPARTMENT OF TRANSPORTATION
 DIVISION OF HIGHWAYS

SUBMITTED APRIL 16, 2008

Diana M. O'Keefe
 DEPUTY DIRECTOR OF HIGHWAYS, REGION ENGINEER

May 9, 2008
Eric E. Harak
 INTERIM ENGINEER OF DESIGN AND ENVIRONMENT

May 9, 2008
Christine M. Reed
 DIRECTOR OF HIGHWAYS, CHIEF ENGINEER

PRINTED BY THE AUTHORITY
OF THE STATE OF ILLINOIS