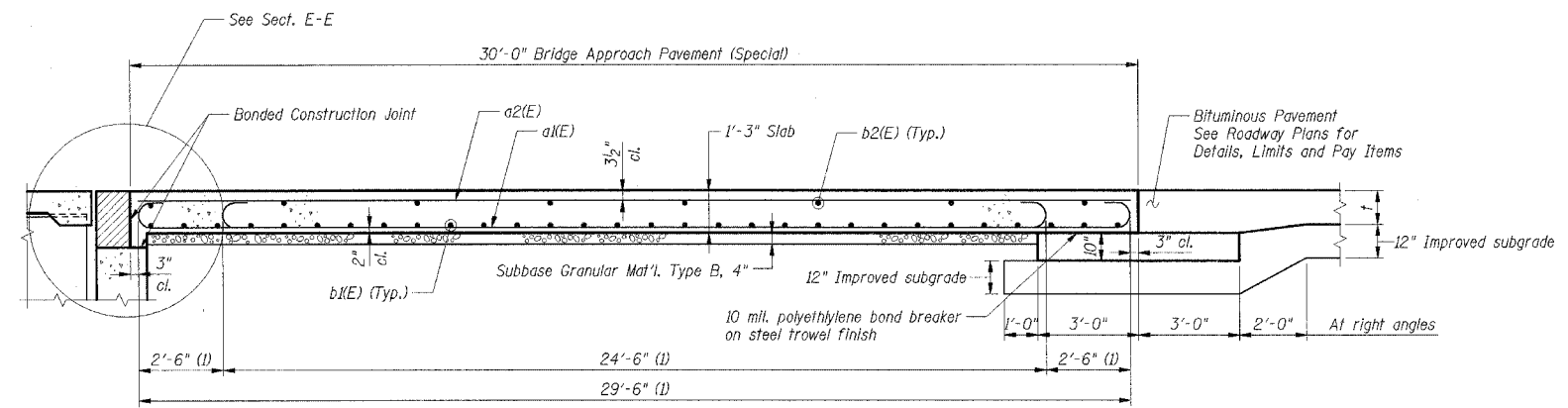
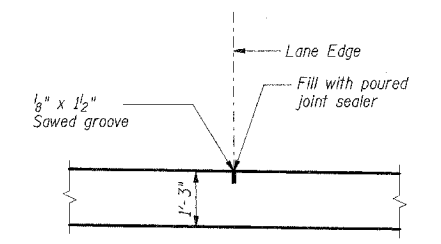


F.A.I. RTE.	SECTION	COUNTY	TOTAL SHEETS	SHEET NO.
59	*	WILL.	608	407
STA.		TO STA.		
FED. ROAD DIST. NO. 1		ILLINOIS FED. AID PROJECT		
* (26, 26HB-1 & 114) R-2 CONTRACT NO. 60363				



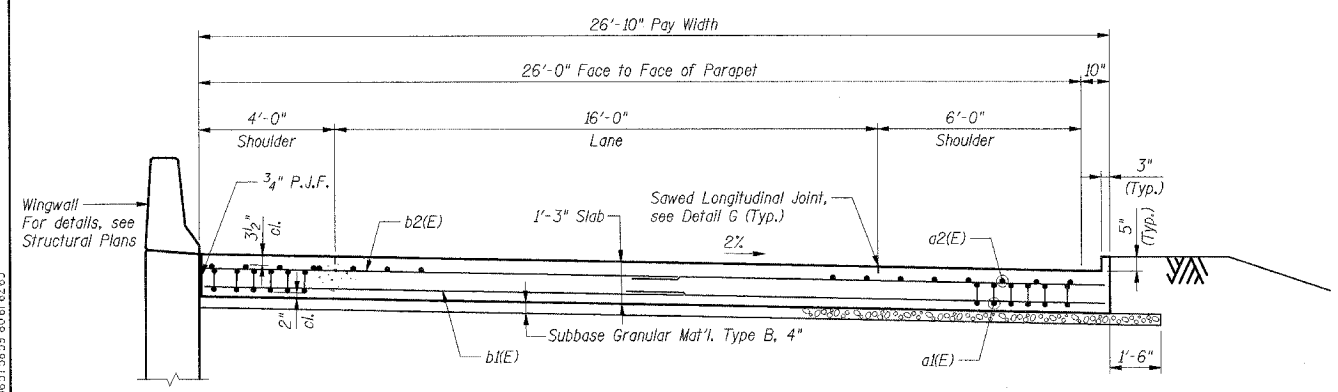
**SECTION A-A**

(I) Stagger a1(E) bars as shown on plan - full width.



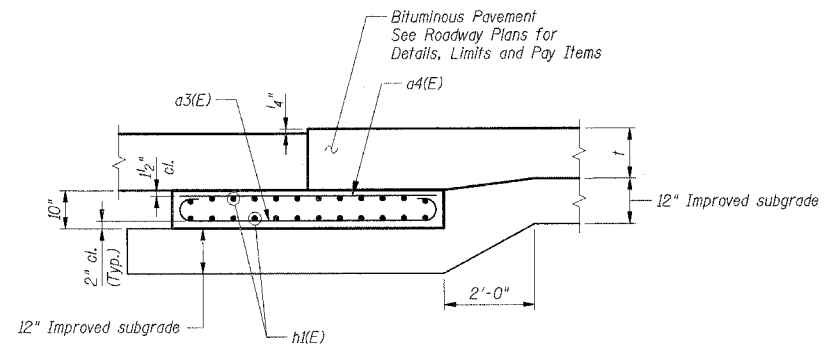
**DETAIL G\***

\* Saw lane edge  
(Reinforcement not shown)



**SECTION B-B**

(Section D-D Opposite Hand)  
(See Plans for Dimensions not shown)



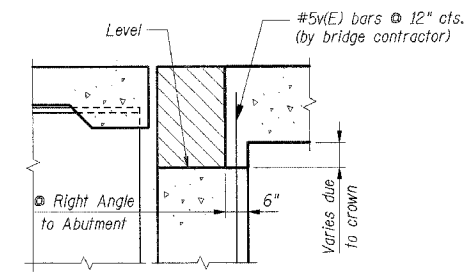
**SECTION F-F**

(Showing Reinforcement)

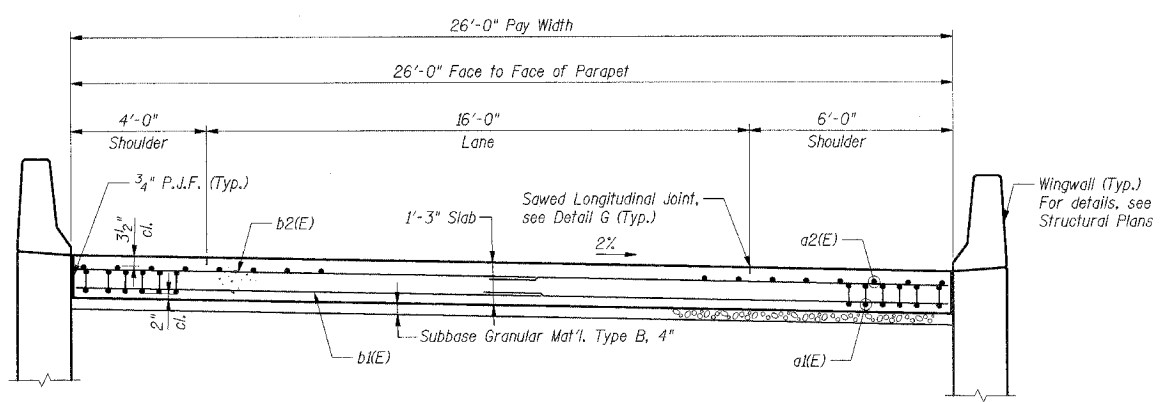
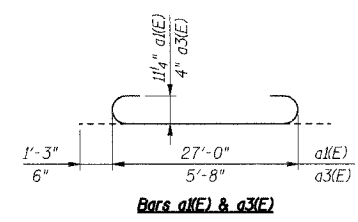
**MATERIAL REQUIRED FOR BRIDGE APPROACH PAVEMENT (SPECIAL)**

Bar	No.	Size	Length	Shape
a1(E)	104	#9	29'-6"	U
a2(E)	52	#5	29'-6"	—
a3(E)	60	#4	6'-8"	U
a4(E)	60	#4	5'-8"	—
b1(E)	120	#5	15'-0"	—
b2(E)	32	#4	14'-10"	—
h1(E)	48	#5	28'-4"	—
Item	Unit	Total		
Concrete Structures	Cu Yd	73.9	**	
Reinforcement Bars, Epoxy Coated	Lbs	16,140	**	
Polyethylene Bond Breaker	Sq Yd	39	**	
Concrete Pad	Sq Yd	39	**	

\*\* Item included in the cost for Bridge Approach Pavement (Special).



**SECTION E-E**



**SECTION C-C**

(See Plans for Dimensions not shown)

- Notes**
1. Work this sheet with Sheet 406.
  2. Reinforcement bars designated (E) shall be epoxy coated.
  3. Thickness "t" = Thickness of Pavement.

**APS-2 REVISIONS**

NAME	DATE

ILLINOIS DEPARTMENT OF TRANSPORTATION  
 FAI 55 AT FAP 338 ILLINOIS ROUTE 59  
 SECTION: (26, 26HB-1 & 114) R-2  
**NB IL 59 EXIT RAMP BRIDGE  
 BRIDGE APPROACH PAVEMENT  
 DETAILS**

DATE: 03/14/08  
 DRAWN BY: TMH  
 CHECKED BY:

**TENG**

TENG & ASSOCIATES, INC.  
 PROFESSIONAL ENGINEERS  
 205 N. MICHIGAN AVE. CHICAGO, IL 60601  
 TEL: 312.587.8000

BONDHULLO  
 2008.08.16.16.17.18.19.20.21.22.23.24.25.26.27.28.29.30.31.32.33.34.35.36.37.38.39.40.41.42.43.44.45.46.47.48.49.50.51.52.53.54.55.56.57.58.59.60.61.62.63  
 APS00VH4.DGN ATTOR:RPH/LGN  
 2008.08.16.16.17.18.19.20.21.22.23.24.25.26.27.28.29.30.31.32.33.34.35.36.37.38.39.40.41.42.43.44.45.46.47.48.49.50.51.52.53.54.55.56.57.58.59.60.61.62.63