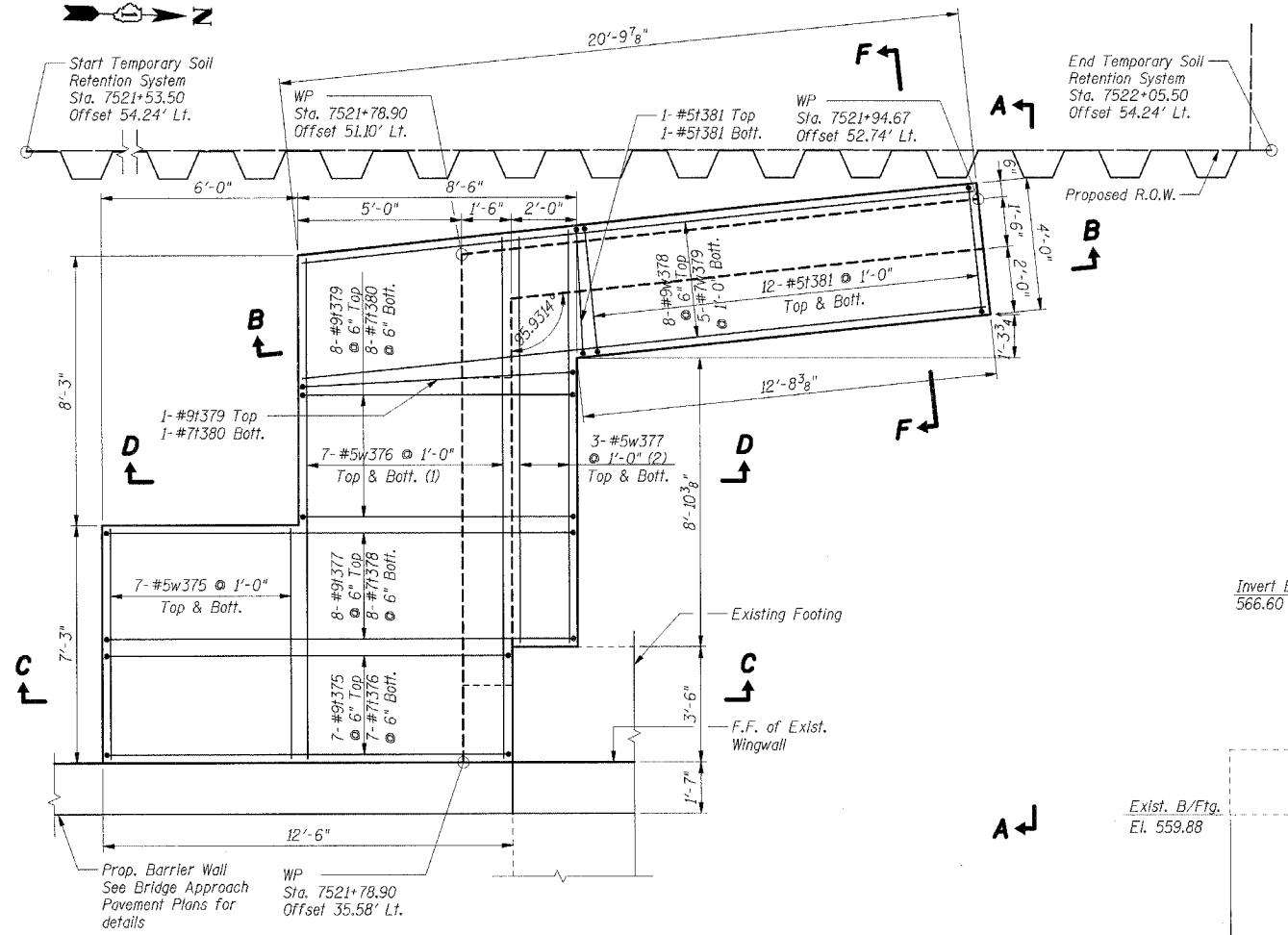
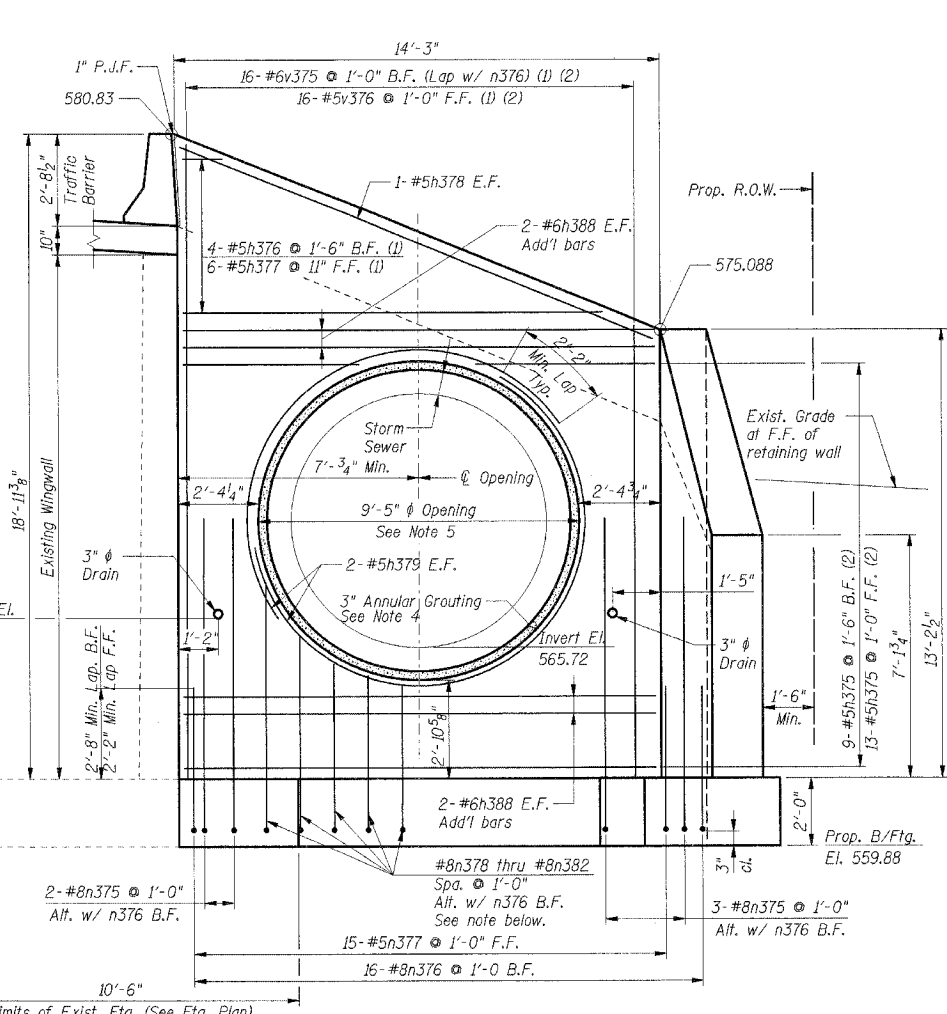


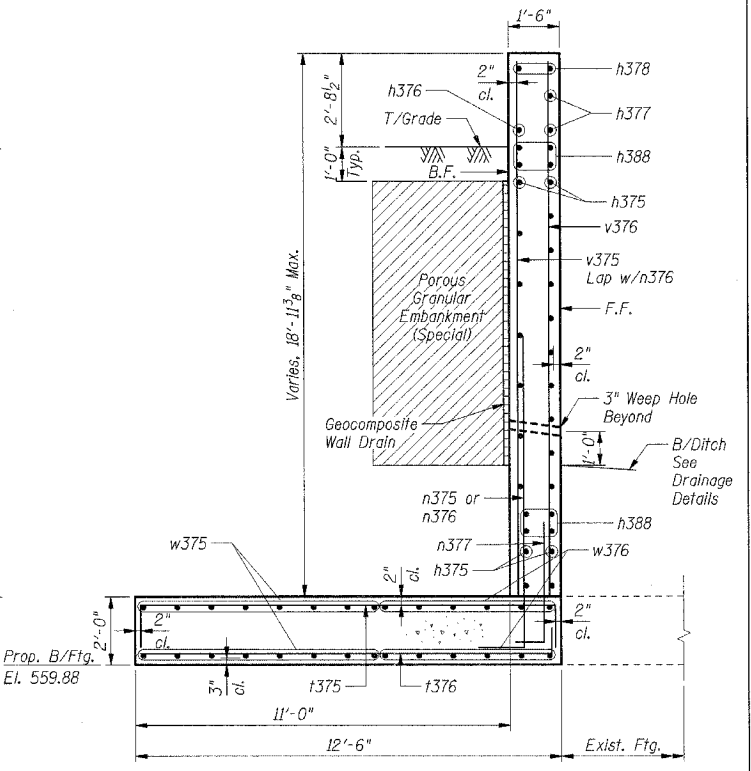
F.A.I. RTE.	SECTION	COUNTY	TOTAL SHEETS	SHEET NO.
59	*	WILL	608	397
STA.		TO STA.		
FED. ROAD DIST. NO. 1		ILLINOIS FED. AID PROJECT		
* (26, 26HB-1 & 114) R-2				
CONTRACT NO. 60363				



FOOTING PLAN

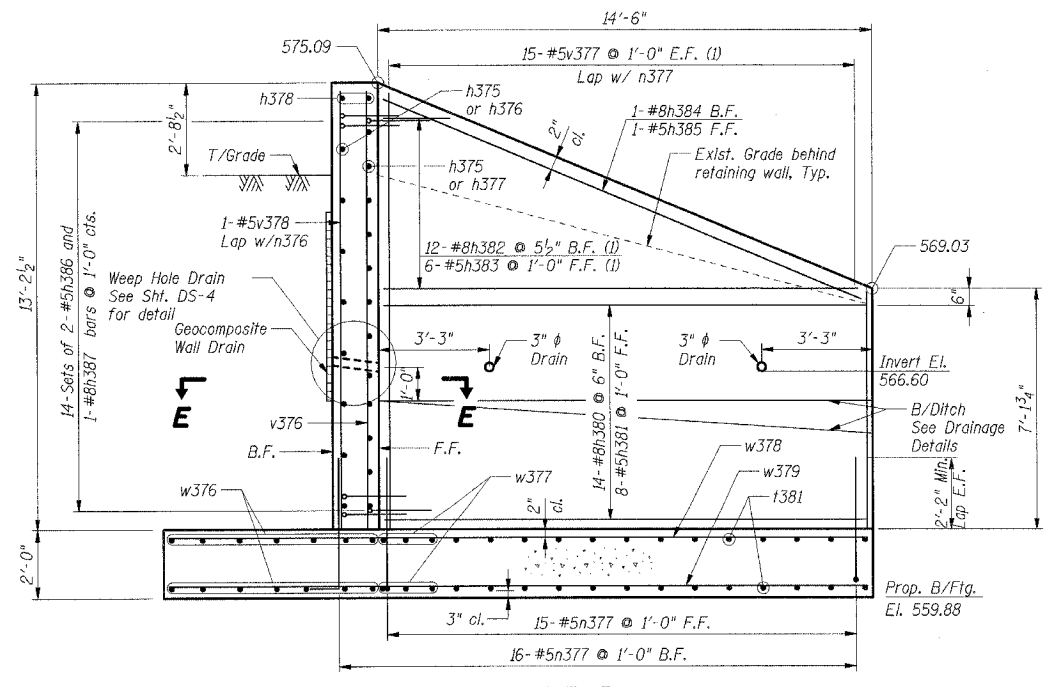


ELEVATION A-A

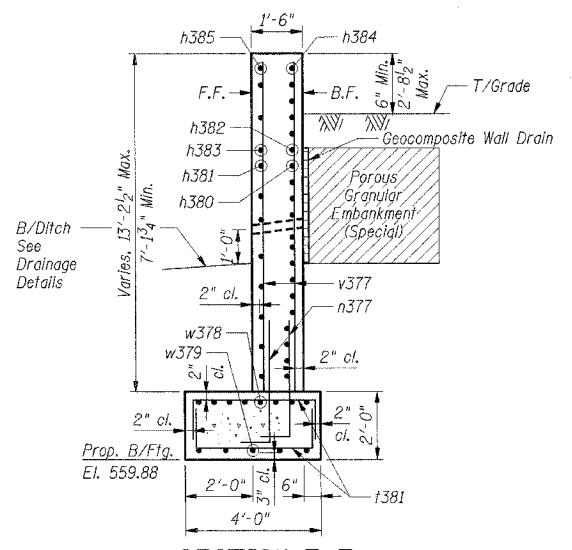


SECTION C-C

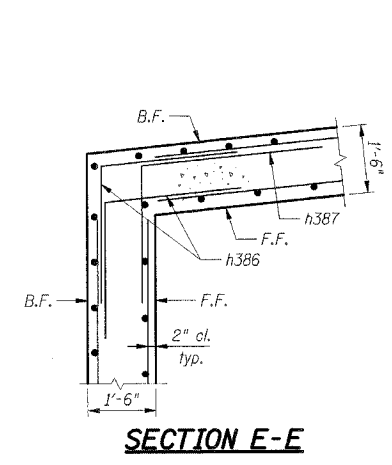
(Some reinforcement left off for clarity)



SECTION B-B



SECTION F-F



SECTION E-E

n379 thru n383

- 1-#8n378 @ 1'-0" from n375 each side B.F.
- 1-#8n379 @ 1'-0" from n378 each side B.F.
- 1-#8n380 @ 1'-0" from n379 each side B.F.
- 1-#8n381 @ 1'-0" from n380 each side B.F.
- 1-#8n382 @ 1'-0" from n381 each side B.F.

- Reinforcing Notes:**
- (1) Cut bars according to cutting diagrams.
 - (2) Cut bars in field to fit.

- Notes:**
1. Work this Sheet with Sheets DS-1 and DS-4.
 2. For bar cutting and bending diagrams, See Sht. DS-4.
 3. E.F. denotes Each Face. F.F. denotes Front Face. B.F. denotes Back Face.
 4. For 3" Annular Grouting, see Detail on Sht. DS-7.
 5. For Grate Frame Details at Opening, see Sht. DS-4.
 6. Maximum Applied Bearing Pressure $Q_{max} = 4.2$ ksf

SHT. DS-3 OF DS-11

REVISIONS	
NAME	DATE

ILLINOIS DEPARTMENT OF TRANSPORTATION
 FAI 55 AT FAP 338 ILLINOIS ROUTE 59
 SECTION: (26, 26HB-1 & 114) R-2

DRAINAGE STRUCTURE 1
 PLAN AND DETAILS

DATE: 03/14/08
 DRAWN BY: PA
 CHECKED BY: BGK

TENG

TENG & ASSOCIATES, INC.
 200 N. MICHIGAN AVE. CHICAGO, IL 60601
 TELEPHONE 312.641.0000

\VTTCORR\LDGN... \ALTOGR\LDGN... \DRACORP\LDGN... \VPEORP\LDGN... \ROWORP\LDGN... \URDOOR\LDGN... \DRDOOR\LDGN... \BENHUJ...
 3-13-2008, 2:47:36
 T:\DOCUMENT\932790\STRUCT\DRDOOR\LDGN...
 color Table: K:\STANDARD\TENC\DATA\COLORTABLE.TBL