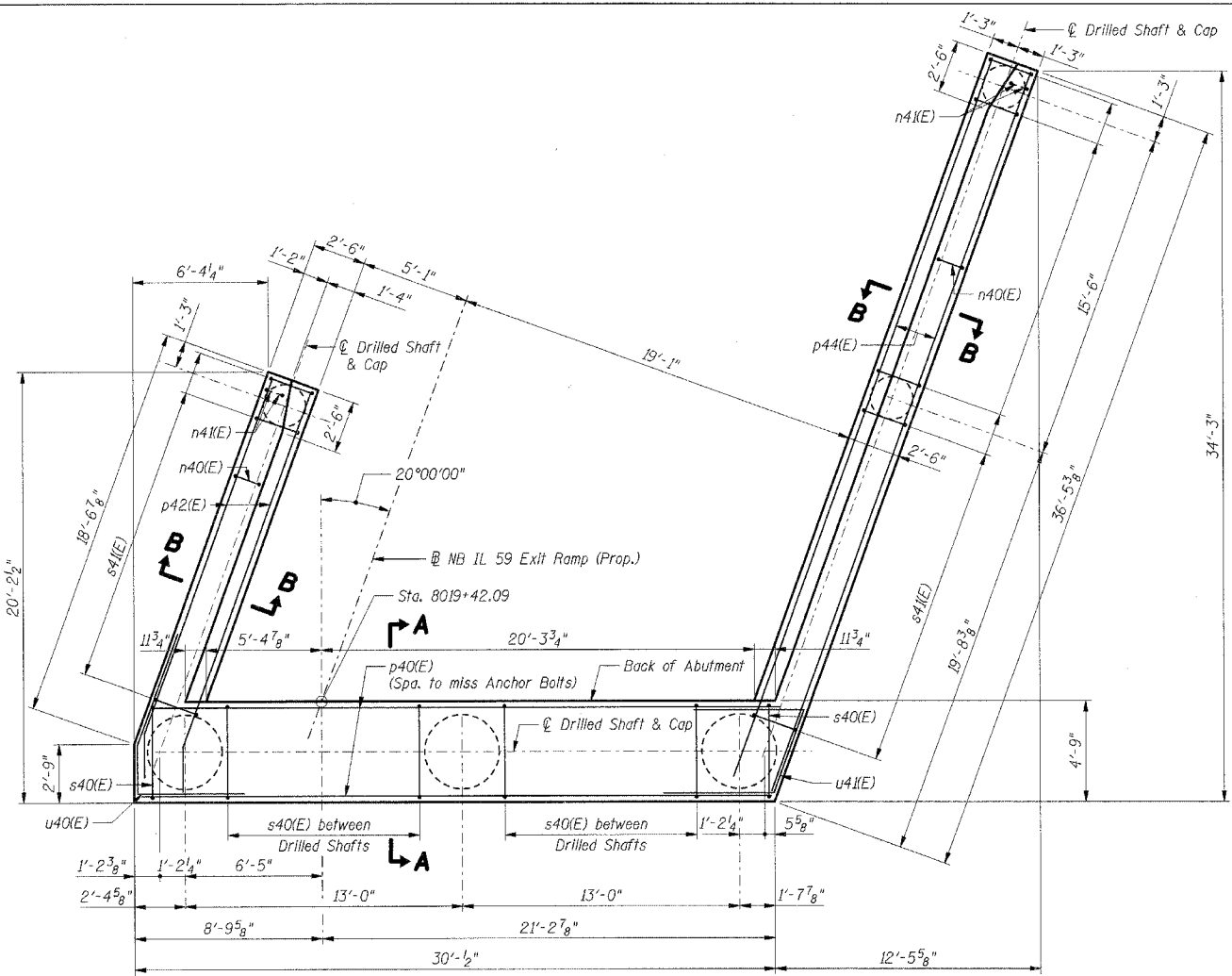


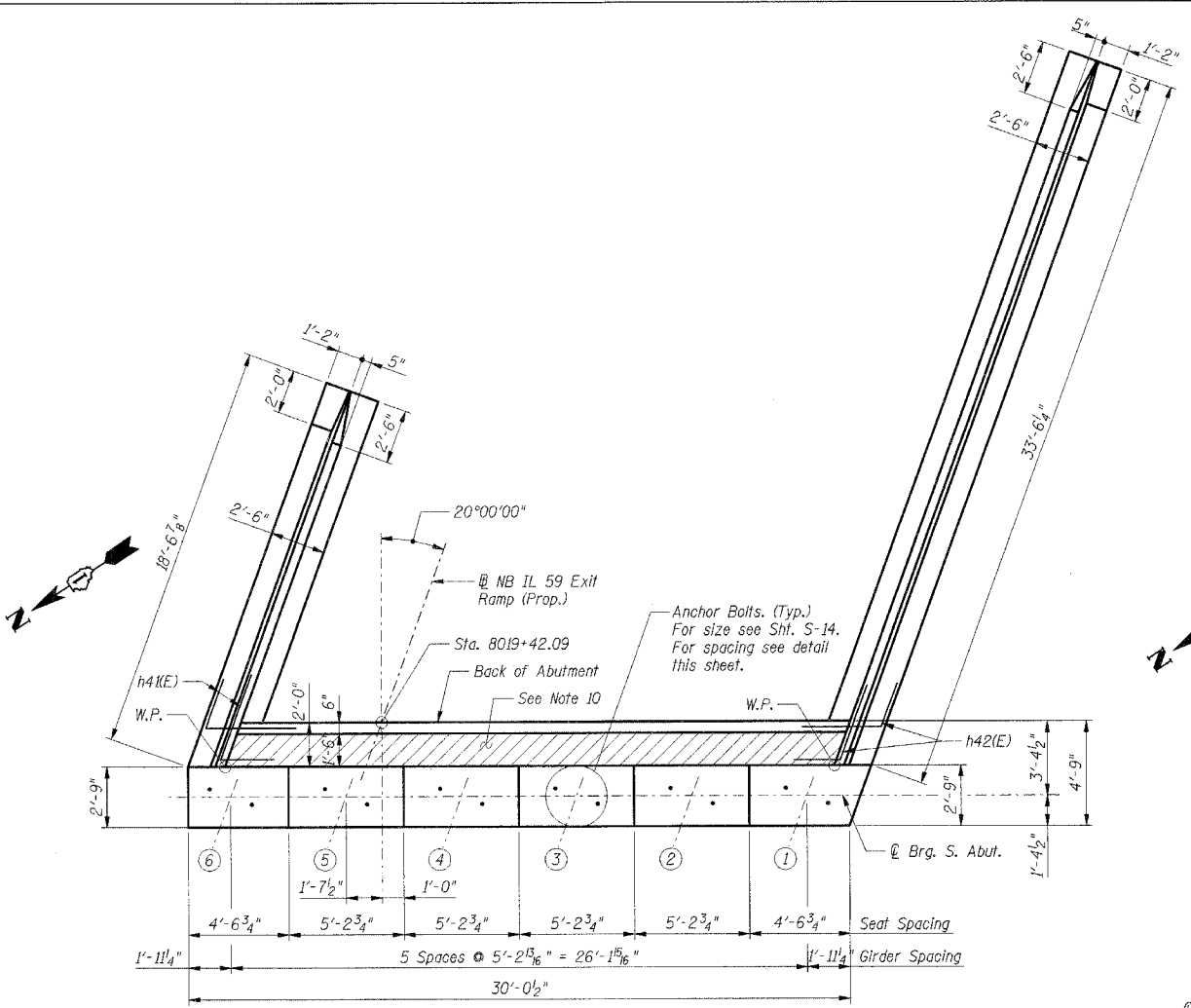
F.A.I. RTE.	SECTION	COUNTY	TOTAL SHEETS	SHEET NO.
59	•	WILL	608	361
STA.	TO STA.		FED. AID PROJECT	
• (26, 26HB-1 & 114) R-2				
CONTRACT NO. 60363				

Girder	Elevation
1	615.13
2	615.07
3	615.00
4	614.94
5	614.88
6	614.82

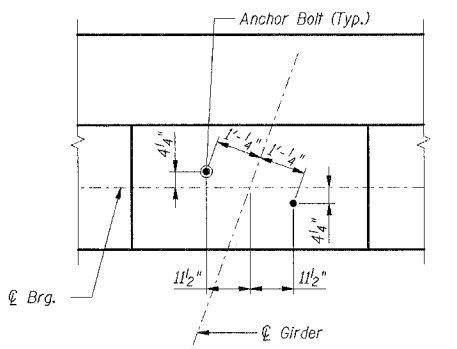
BEARING SEAT ELEVATIONS



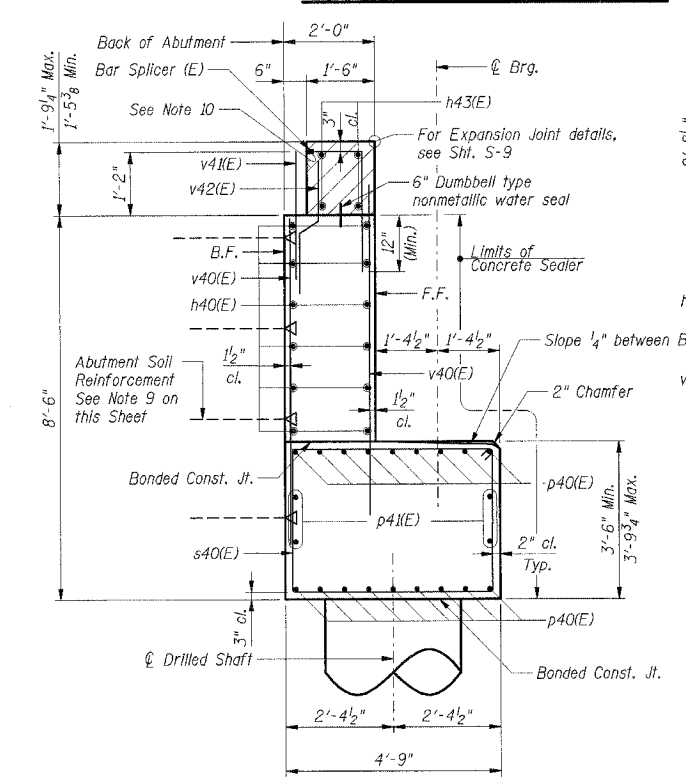
DRILLED SHAFT CAP PLAN



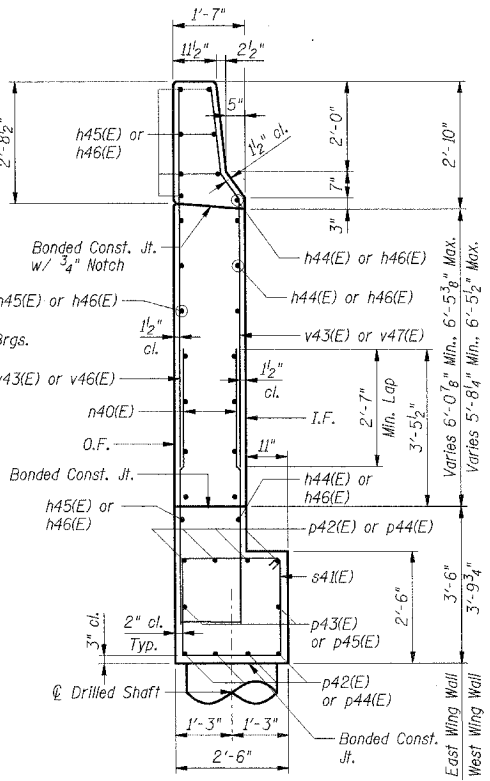
TOP VIEW



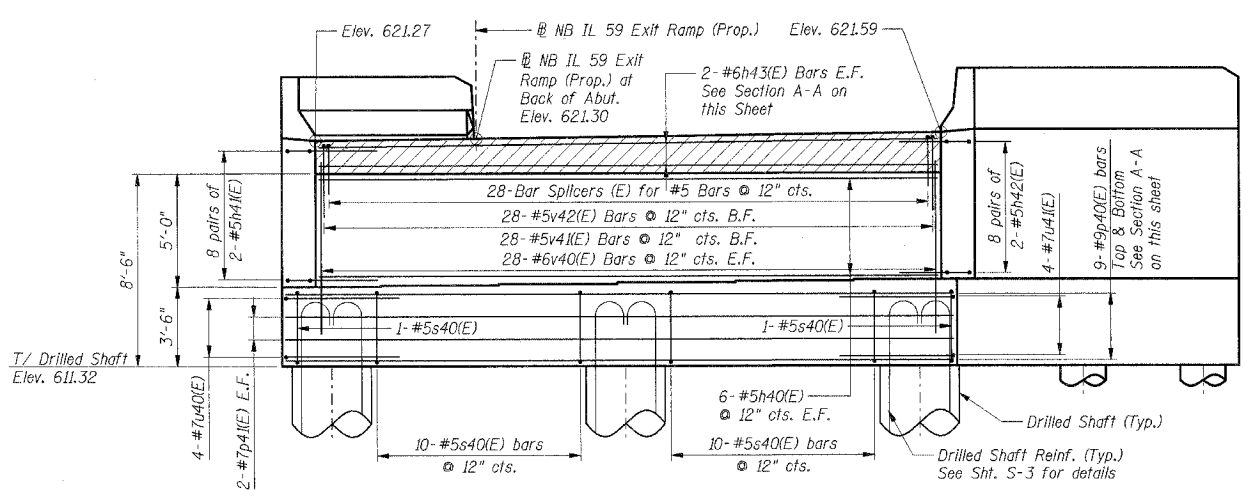
ANCHOR BOLT LAYOUT



SECTION A-A



SECTION B-B



ELEVATION
(Looking South)

- Notes:**
1. Work this Sheet with Sht. S-16.
 2. Reinforcement bars designated (E) shall be epoxy coated.
 3. Bars indicated thus: 4x2-#5 etc. indicate 4 lines of bars with 2 lengths per line.
 4. Space reinforcement in cap to miss anchor bolts.
 5. All edges shall have standard 3/4" chamfers except as noted.
 6. Pour steps monolithically with cap.
 7. F.F. indicates Front Face
B.F. indicates Back Face
E.F. indicates Each Face.
 8. For Substructure Layout and drilled shaft details, see Sht. S-3.
 9. M.S.E. Wall Supplier shall design and supply system to transfer earth pressure of 40 pcf equivalent fluid weight to the back of abutment and backwall, plus a longitudinal force of 15.5 k transmitted by the bearings applied to the bridge seats.
 10. Hatched area to be poured after superstructure forms have been removed. Quantity of concrete included with Concrete Superstructure.

SHT. S-15 OF S-24

REVISIONS	
NAME	DATE

ILLINOIS DEPARTMENT OF TRANSPORTATION
 F.A.P. ROUTE 338 (ILLINOIS ROUTE 59)
 IL ROUTE 59 OVER F.A.I. 55 (I-55)
 SECTION (26, 26HB-1 & 114) R-2
 STRUCTURE NUMBER 099-4642
 STATION 8021+17.13, WILL COUNTY

**SOUTH ABUTMENT
 PLAN AND ELEVATION**

DRAWN BY: MX
 CHECKED BY: MDB

DATE: 03/14/08

TENG
TENG & ASSOCIATES, INC.
 305 N. MICHIGAN AVE. CHICAGO, IL 60610
 TELEPHONE: 312.644.9000

I:\PROJECTS\2008\1250239\1\DOCUMENTS\10327500\STRUCTURE\ABUTMENTS\CDCH BOROHLIO
 3-13-2008 12:52:39
 pen table: N/A
 c:\p\table: K:\STANDARD\TENG\DATA\COLORTABLE.TBL