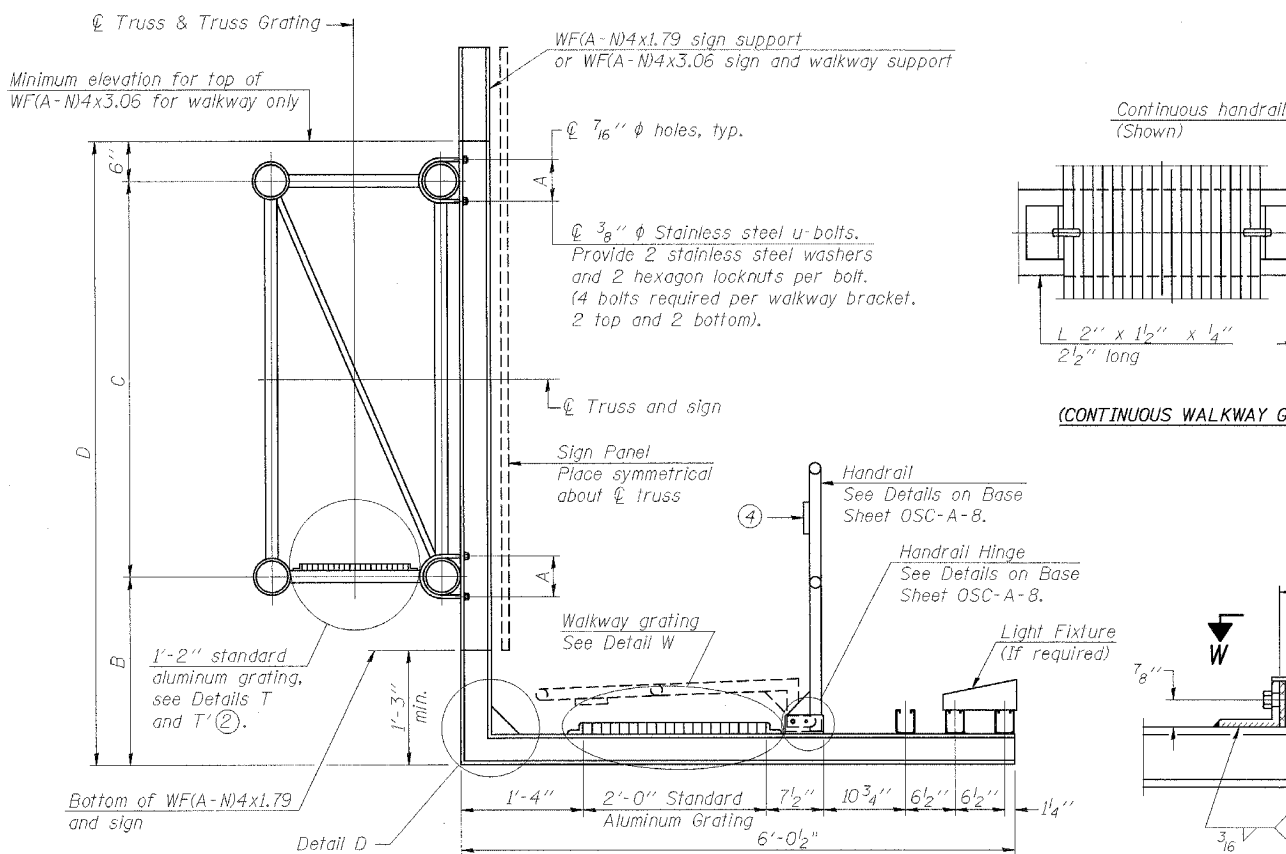
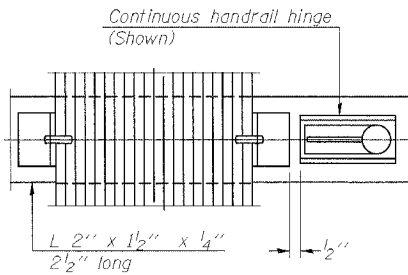


F.A.I. RTE.	SECTION	COUNTY	TOTAL SHEETS	SHEET NO.
59		WILL	608	304
STA.		TO STA.		
FED. ROAD DIST. NO. 1		ILLINOIS	FED. AID PROJECT	
• (26, 26HB-1 & 114) R-2				
CONTRACT NO. 60363				



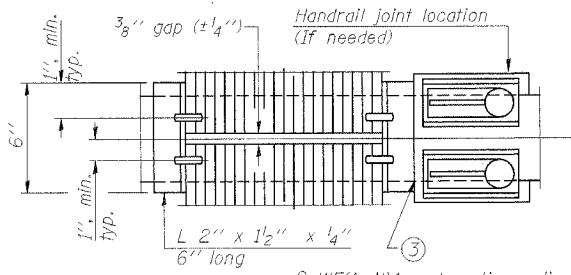
**SECTION B-B**

Sign shall be even with the top of the bracket, but it may extend no more than 6" above the top of the bracket for field adjustments.



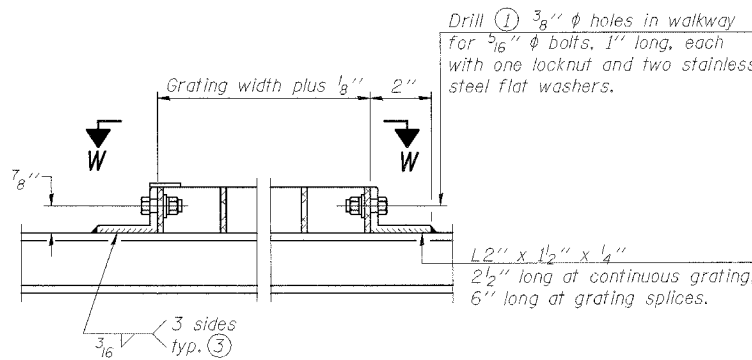
(CONTINUOUS WALKWAY GRATING)

**SECTION W-W**



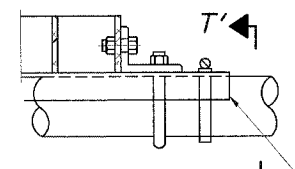
(AT WALKWAY GRATING SPLICE)

**SECTION W-W**



**DETAIL W**

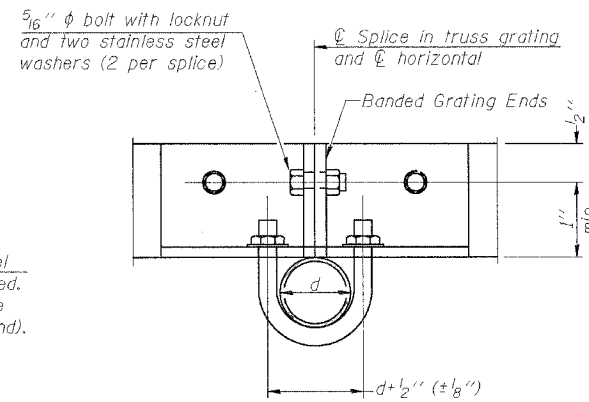
(Walkway grating)



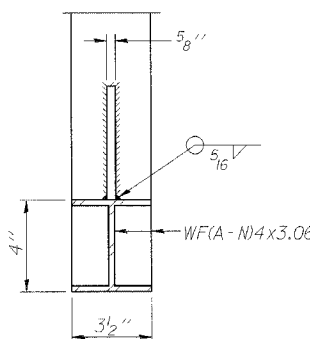
**DETAIL T'**

(Truss grating splice)

Details not shown same as Detail T. Alternate materials may be used subject to the Engineer's review and approval.

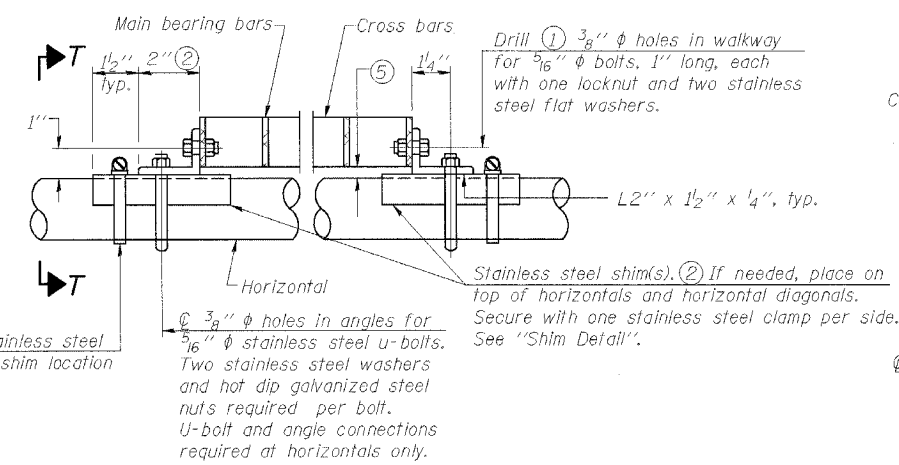


**SECTION T'-T'**



**SECTION D-D**

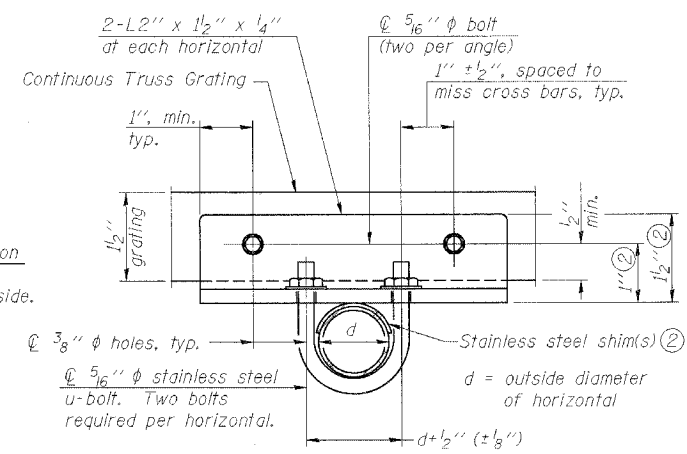
Screw type stainless steel tube clamp at shim location



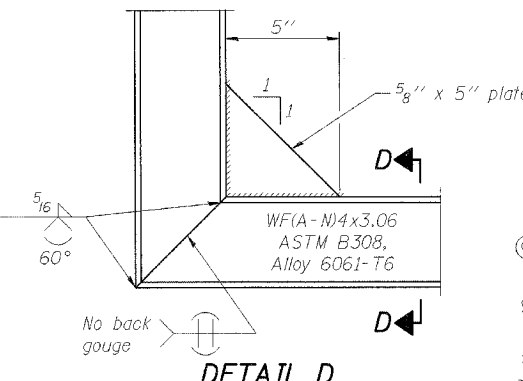
**DETAIL T**

(Continuous Truss grating)

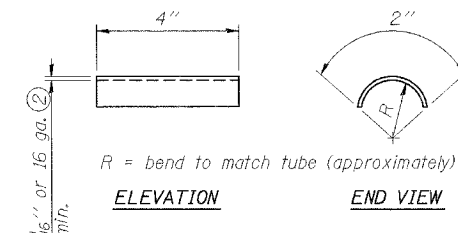
- Drilling holes in grating may be done in shop or field, based on Contractor's preference and subject to accurate alignment.
- Stainless steel shims shall be placed as shown in Detail T if needed to compensate for alignment variations between horizontal and diagonal pipes beyond adjustment provided by angles. Thicker shims may be used subject to shims performing properly.
- If Handrail Joint present, weld angle to WF(A-N)4 and 1/4" extension bars. (See Base Sheet OSC-A-8.)
- 1/8" x 1/2" x 2" welded to handrail posts to protect locations that contact grating.
- Tube to grating gap may vary from 0 to 1/2", max. to align walkway, allow for camber, etc.



**SECTION T-T**



**DETAIL D**



**SHIM DETAIL**

Structure Number	Station	A	B	C	D
IC0991055R250.46	63+00	7"	5'-9"	5'-6"	11'-9"
IC0991055R250.76	79+00	7"	5'-9"	5'-6"	11'-9"
IC0991055L250.93	88+00	7"	4'-6"	5'-6"	10'-6"

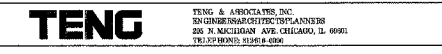
NUMBER	REVISION	DATE

REVISIONS	
NAME	DATE

ILLINOIS DEPARTMENT OF TRANSPORTATION  
FAI 55 AT FAP 338 ILLINOIS ROUTE 59  
SECTION: (26, 26HB-1 & 114) R-2

WALKWAY DETAILS  
ALUMINUM TRUSS & STEEL POST  
DRAWN BY: MDB  
CHECKED BY:  

DATE: 03/14/08



T:\DOCUMENT\932790\STRUCT\03\5600202.DGN  
 BONDHUIJ  
 3-13-2008 12:26:22  
 color TABLE.tbl  
 T:\BONDHUIJ\932790\STRUCT\03\5600202.DGN  
 color TABLE.tbl  
 3-13-2008 12:26:22  
 pen table: N/A