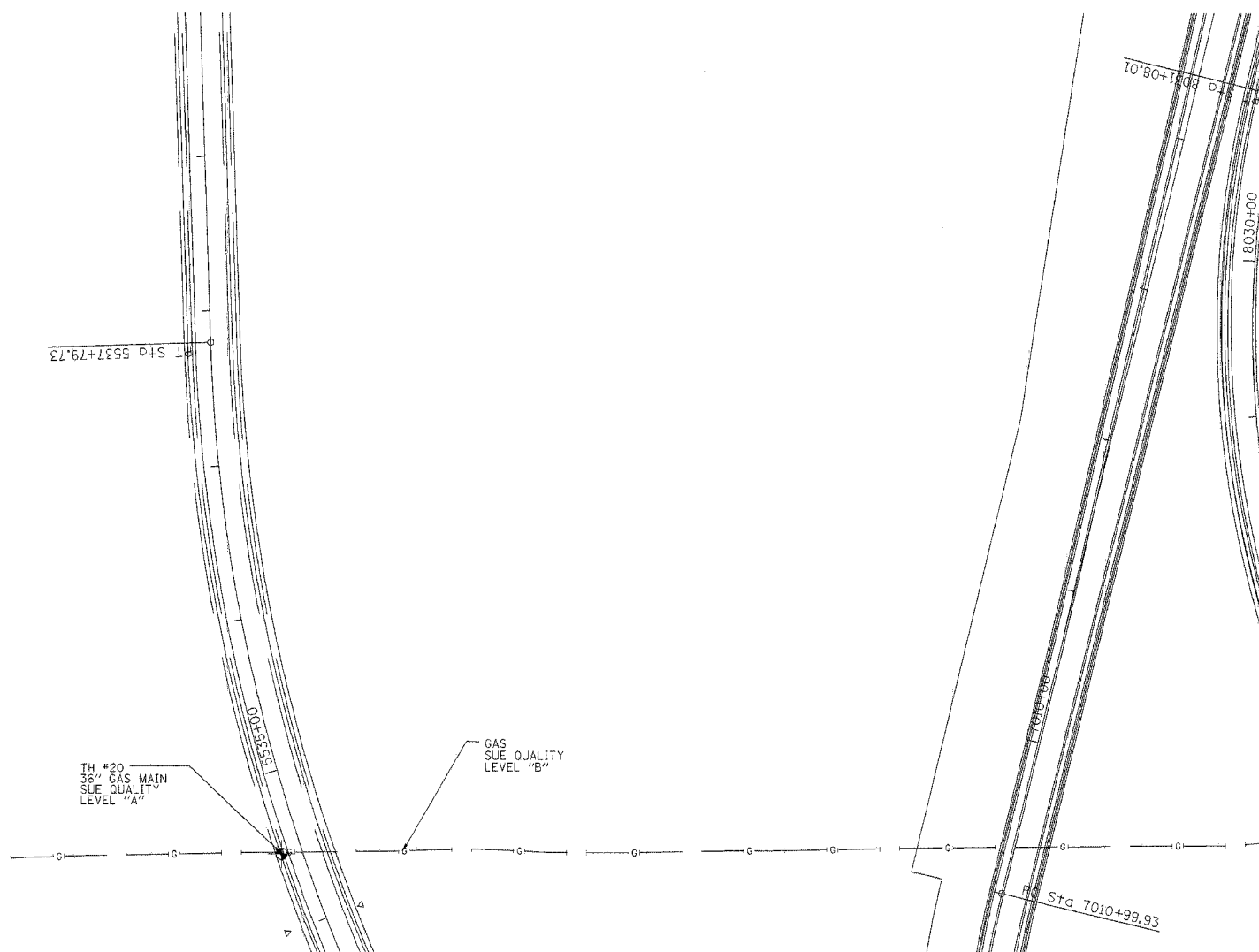
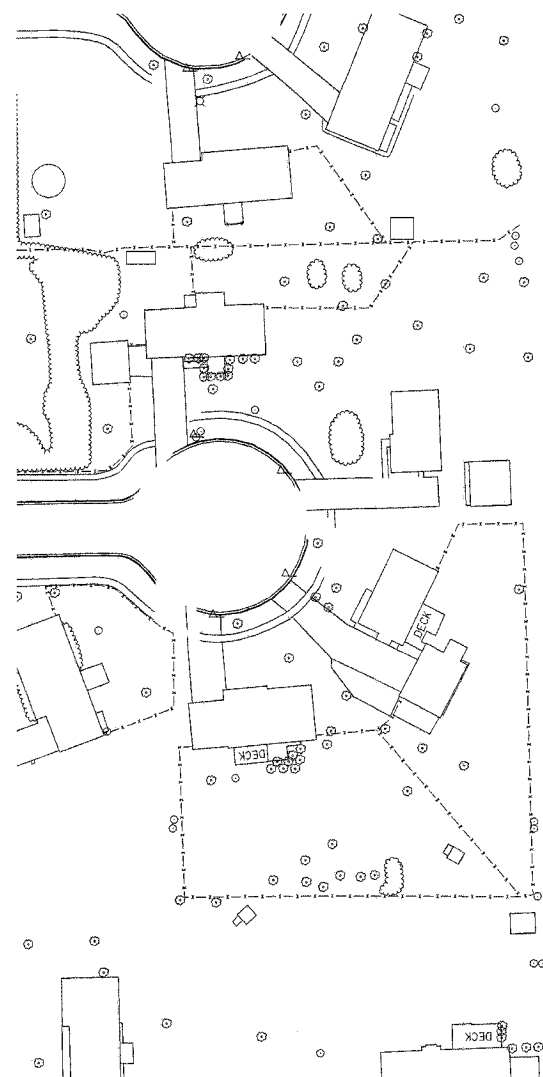


F.A. RTE.	SECTION	COUNTY	TOTAL SHEETS	SHEET NO.
	*	WILL	608	229
STA.		TO STA.		
FED. ROAD DIST. NO.	ILLINOIS	FED. AID PROJECT		

\*(26, 26HB-1&114) R-2  
CONTRACT NO. 60363



MATCH TO PAGE 11

The SBC locations depicted have been obtained through the application of geophysical methods to determine the existence and approximate horizontal position of these facilities. However, SBC will not provide TBE Group, Inc. with utility records nor allow access to their field closures (pedestals/manholes etc.), to help verify the locations of their existing underground facilities. Therefore, TBE is unable to verify the completeness of the SBC locations depicted in accordance with the CI/ASCE Standard 38-02.

Utilities shown on these plans as depicted in the legend have been investigated by TBE Group, Inc in accordance with SUE Industry Standards. All other information shown has been provided to TBE Group, Inc by others. Changes to utilities after dates shown may have been made and therefore may result in variances from this plan. Consideration should be given to updating this plan if deemed advisable prior to final design and construction.



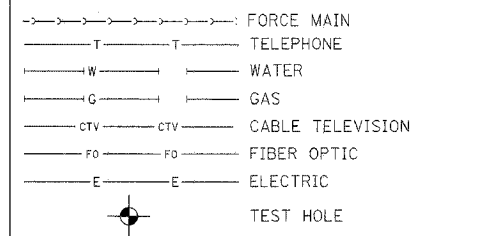
**TBE GROUP, INC.**  
CIVIL ENGINEERING • TRANSPORTATION • ENVIRONMENTAL  
PLANNING • UTILITY ENGINEERING/LOCATING


IL09500132, 142, 158, 229, 245

TBE SUE PAGE NO: 12 of 31

Checked by: *[Signature]*

Utility Quality Level "A" : Test Holes  
Utility Quality Level "B" : Designating



  
205 W. WACKER DRIVE  
SUITE 1020  
CHICAGO, IL 60606  
(312) 704-1970

REVISIONS	
NAME	DATE

ILLINOIS DEPARTMENT OF TRANSPORTATION  
  
SUE Investigation of Underground Utilities  
I-55/I-80 from US RT. 30 to Weber Road  
Section No. 99 11&2) WRS-1  
Contract No. 62895 and 62896  
Will County  
  
SOL "A" DATE : 1/04/05  
SOL "B" DATE : 1/13/03  
DRAWN BY : KLC  
SCALE : 1" = 50'