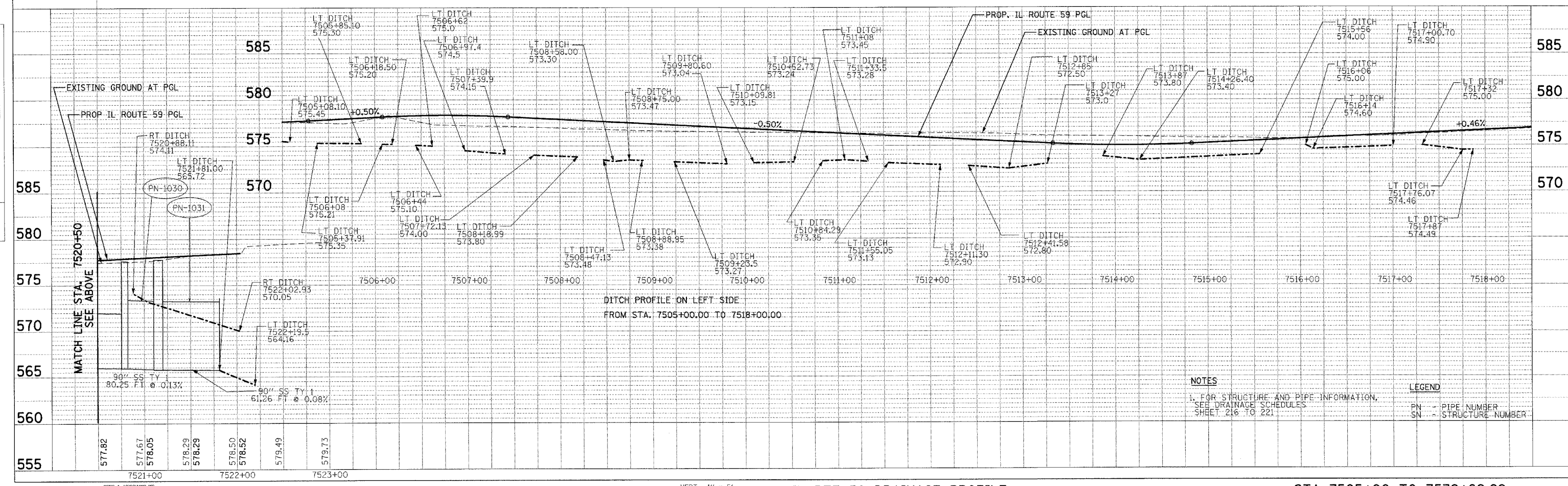
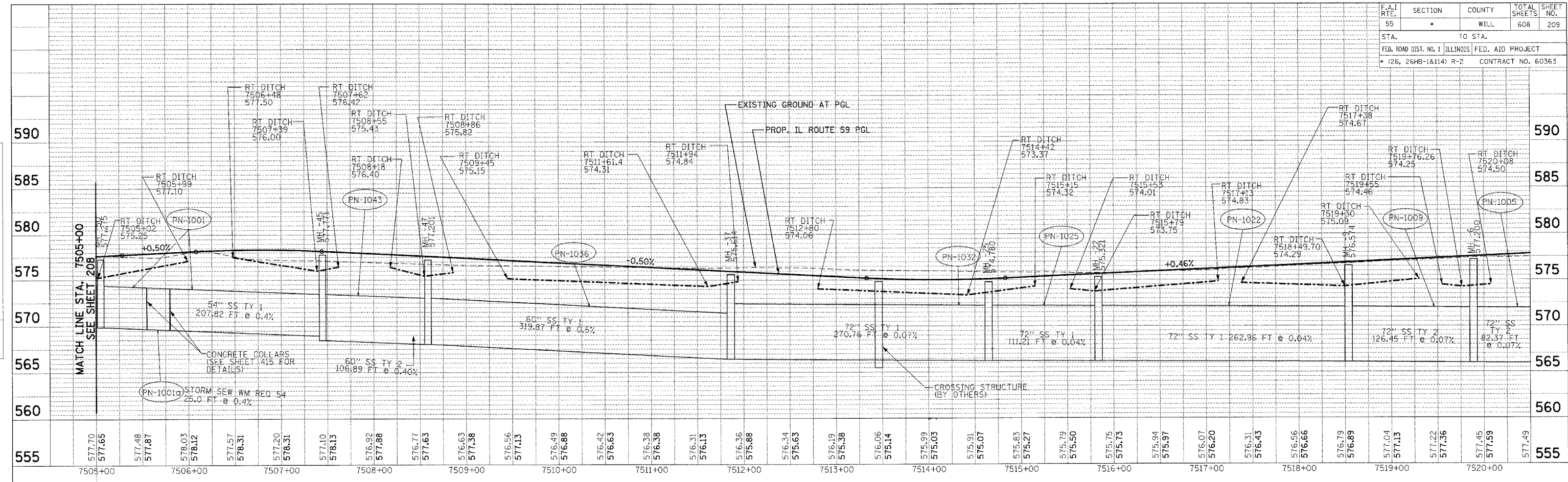


F.A.I. RTE.	SECTION	COUNTY	TOTAL SHEETS	SHEET NO.
55	•	WILL	608	209
STA.		TO STA.		
FED. ROAD DIST. NO. 1		ILLINOIS FED. AID PROJECT		
• (26, 26HB-1&114) R-2		CONTRACT NO. 60363		

PLAN	SURVEYED	DATE
NO.	BY	
	CHECKED	
	DATE	
	PAID FILE NO.	

PROFILE	SURVEYED	DATE
NO.	BY	
	CHECKED	
	DATE	
	STRUCTURE NOTATIONS CHD	



NOTES
 1. FOR STRUCTURE AND PIPE INFORMATION, SEE DRAINAGE SCHEDULES SHEET 216 TO 221.

LEGEND
 PN - PIPE NUMBER
 SN - STRUCTURE NUMBER

\VRF00R2.DGN, \VTBORDER.DGN, \VRF00R1.DGN, \VRF00R2.DGN, \VRF00R3.DGN, \VRF00R4.DGN, \VRF00R5.DGN, \VRF00R6.DGN, \VRF00R7.DGN, \VRF00R8.DGN, \VRF00R9.DGN, \VRF00R10.DGN, \VRF00R11.DGN, \VRF00R12.DGN, \VRF00R13.DGN, \VRF00R14.DGN, \VRF00R15.DGN, \VRF00R16.DGN, \VRF00R17.DGN, \VRF00R18.DGN, \VRF00R19.DGN, \VRF00R20.DGN, \VRF00R21.DGN, \VRF00R22.DGN, \VRF00R23.DGN, \VRF00R24.DGN, \VRF00R25.DGN, \VRF00R26.DGN, \VRF00R27.DGN, \VRF00R28.DGN, \VRF00R29.DGN, \VRF00R30.DGN, \VRF00R31.DGN, \VRF00R32.DGN, \VRF00R33.DGN, \VRF00R34.DGN, \VRF00R35.DGN, \VRF00R36.DGN, \VRF00R37.DGN, \VRF00R38.DGN, \VRF00R39.DGN, \VRF00R40.DGN, \VRF00R41.DGN, \VRF00R42.DGN, \VRF00R43.DGN, \VRF00R44.DGN, \VRF00R45.DGN, \VRF00R46.DGN, \VRF00R47.DGN, \VRF00R48.DGN, \VRF00R49.DGN, \VRF00R50.DGN, \VRF00R51.DGN, \VRF00R52.DGN, \VRF00R53.DGN, \VRF00R54.DGN, \VRF00R55.DGN, \VRF00R56.DGN, \VRF00R57.DGN, \VRF00R58.DGN, \VRF00R59.DGN, \VRF00R60.DGN, \VRF00R61.DGN, \VRF00R62.DGN, \VRF00R63.DGN, \VRF00R64.DGN, \VRF00R65.DGN, \VRF00R66.DGN, \VRF00R67.DGN, \VRF00R68.DGN, \VRF00R69.DGN, \VRF00R70.DGN, \VRF00R71.DGN, \VRF00R72.DGN, \VRF00R73.DGN, \VRF00R74.DGN, \VRF00R75.DGN, \VRF00R76.DGN, \VRF00R77.DGN, \VRF00R78.DGN, \VRF00R79.DGN, \VRF00R80.DGN, \VRF00R81.DGN, \VRF00R82.DGN, \VRF00R83.DGN, \VRF00R84.DGN, \VRF00R85.DGN, \VRF00R86.DGN, \VRF00R87.DGN, \VRF00R88.DGN, \VRF00R89.DGN, \VRF00R90.DGN, \VRF00R91.DGN, \VRF00R92.DGN, \VRF00R93.DGN, \VRF00R94.DGN, \VRF00R95.DGN, \VRF00R96.DGN, \VRF00R97.DGN, \VRF00R98.DGN, \VRF00R99.DGN, \VRF00R100.DGN