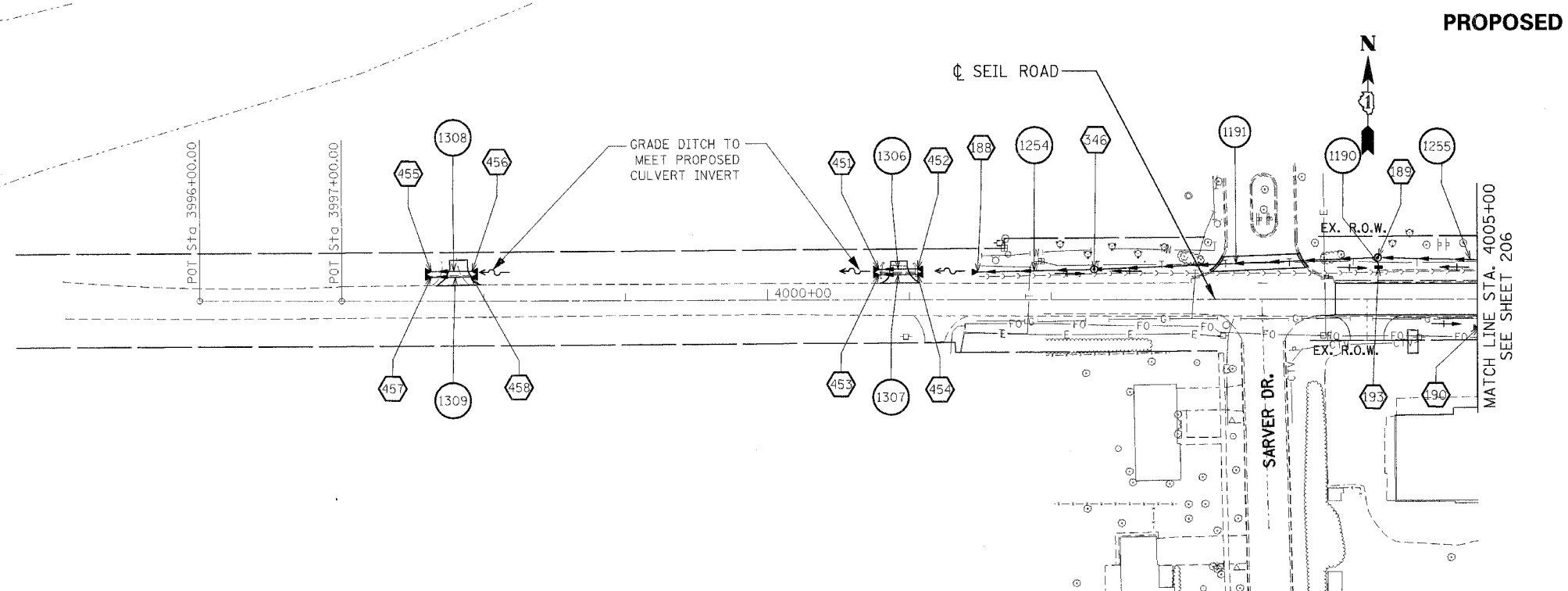
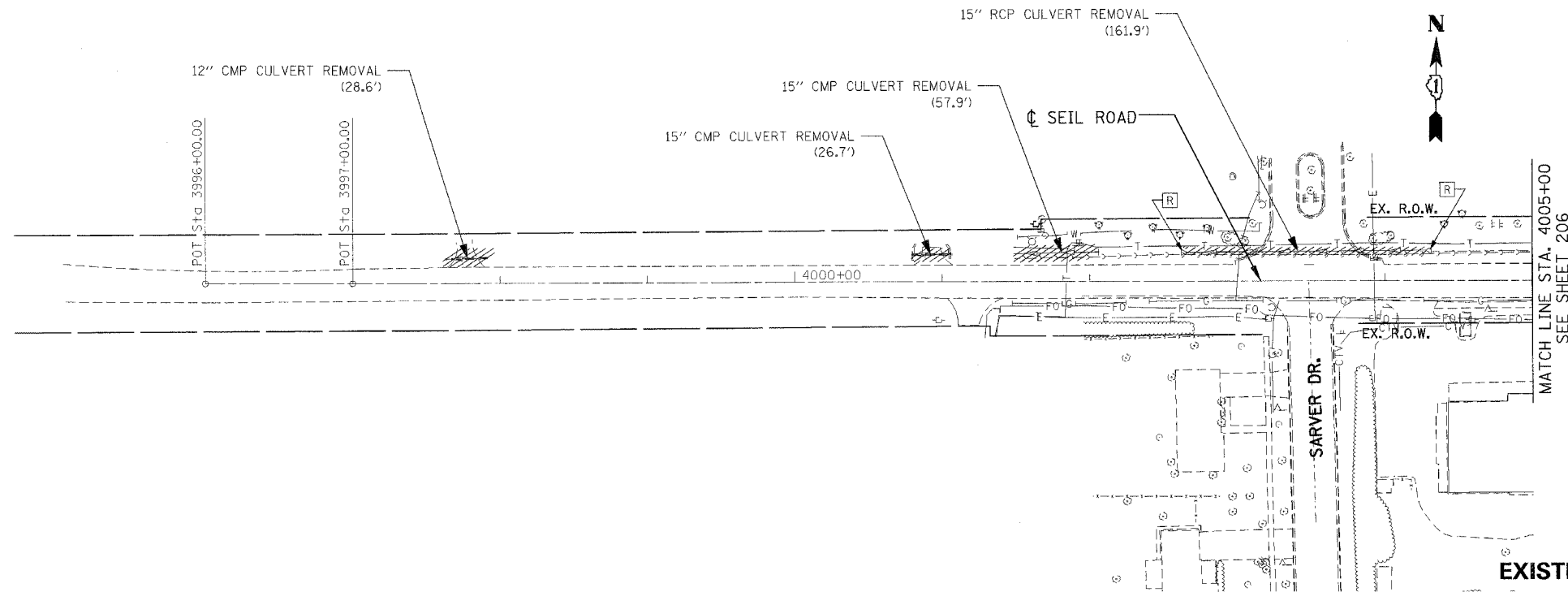


I:\PROJECTS\03-14-08\114\DRAWING\EXISTING AND PROPOSED SEIL RD DRAINAGE AND UTILITIES STA. 4002+18 TO STA. 4005+00.dwg
 3/14/08 10:53 AM
 1.2, 3.3, 5.5, 6.7, 8.10, 11, 12, 13, 14, 15, 16, 17, 19, 20, 21, 22, 23, 24, 25, 26, 27, 28, 29, 30, 31, 32, 33, 34, 35, 36, 37, 38, 39, 40, 41, 42, 43, 44, 45, 46, 47, 48, 49, 50, 51, 52, 53, 54, 55, 56, 57, 58, 59, 60, 61, 62, 63
 KARMATMR

F.A.I. RTE.	SECTION	COUNTY	TOTAL SHEETS	SHEET NO.
55	*	WILL	608	205
STA.	TO STA.			
FED. ROAD DIST. NO. 1		ILLINOIS	FED. AID PROJECT	
* (26, 26HB-1&114) R-2		CONTRACT NO. 60363		



LEGEND

- | | | | | | | | | | |
|--|-----------------------------------|--|--------------------|--|-------------------|--|--------------------------------------------------|--|---------------------------------|
| | STRUCTURE NUMBER | | EX. MANHOLE | | PROP. STORM SEWER | | FILL STRUCTURE | | EX. FIBER OPTIC |
| | PIPE NUMBER | | EX. CATCH BASIN | | PROP. STORM SEWER | | ADJUST STRUCTURE | | EX. TELEPHONE |
| | PIPE REMOVAL | | EX. SANITARY SEWER | | PROP. STORM SEWER | | MOVE STRUCTURE | | EX. GAS |
| | CONCRETE HEADWALL FOR PIPE DRAINS | | EX. DITCH | | PROP. SWALE | | ADJUST FRAME & LID | | EX. WATER |
| | | | | | PROP. SWALE | | RECONSTRUCT STR. | | EX. ELECTRIC |
| | | | | | PROP. SWALE | | CLEAN STRUCTURE | | EX. CABLE TV |
| | | | | | PROP. SWALE | | PROP. PIPE UNDERDRAINS, 6" OR 4" (SEE SCHEDULES) | | |
| | | | | | PROP. SWALE | | | | PROPOSED UTILITY PROTECTION PAD |

NOTES:
 1. FOR STRUCTURE AND PIPE INFORMATION, SEE DRAINAGE SCHEDULES SHEET 216 TO 221.

REVISIONS	
NAME	DATE

ILLINOIS DEPARTMENT OF TRANSPORTATION
 FAI 55 AT FAP 338 ILLINOIS ROUTE 59
 SECTION: (26, 26HB-1&114) R-2
EXISTING AND PROPOSED SEIL RD DRAINAGE & UTILITIES STA. 4002+18 TO STA. 4005+00
 SCALE: 1" = 50'
 DATE: 03/14/08
 DRAWN BY: MRK
 CHECKED BY: TKL
TENG
TENG & ASSOCIATES, INC.
 ENGINEERS/ARCHITECTS/PLANNERS
 205 N. MICHIGAN, 4TH FLOOR, CHICAGO, IL 60601
 TELEPHONE: 312.616.8800