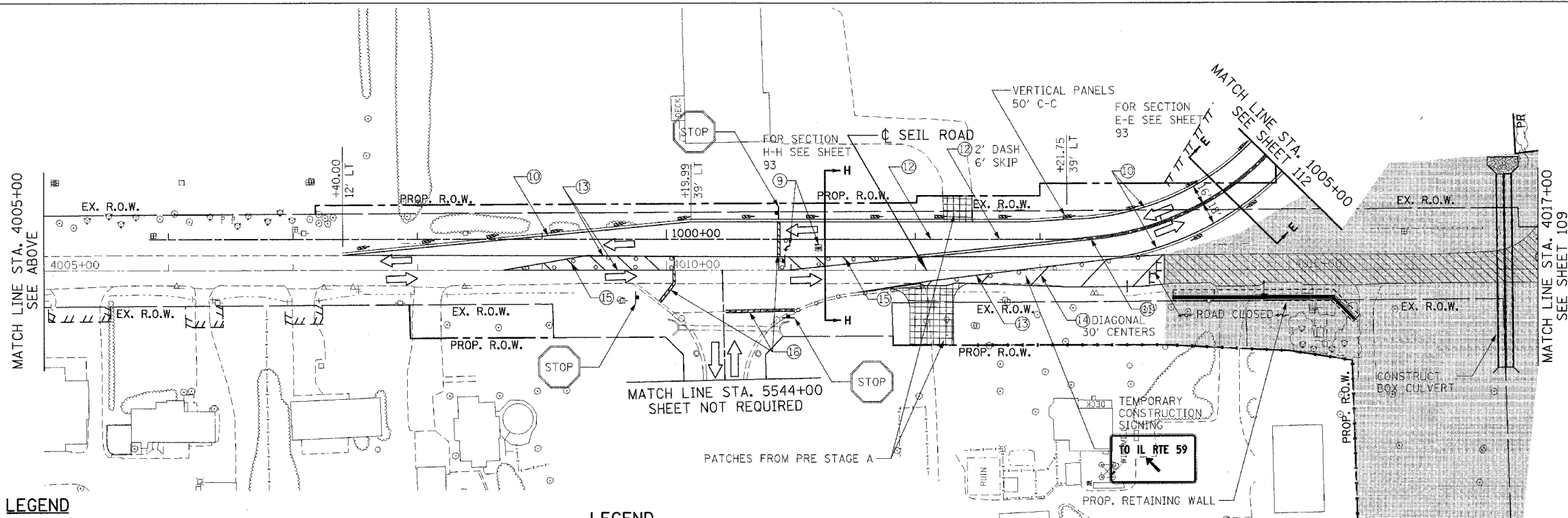
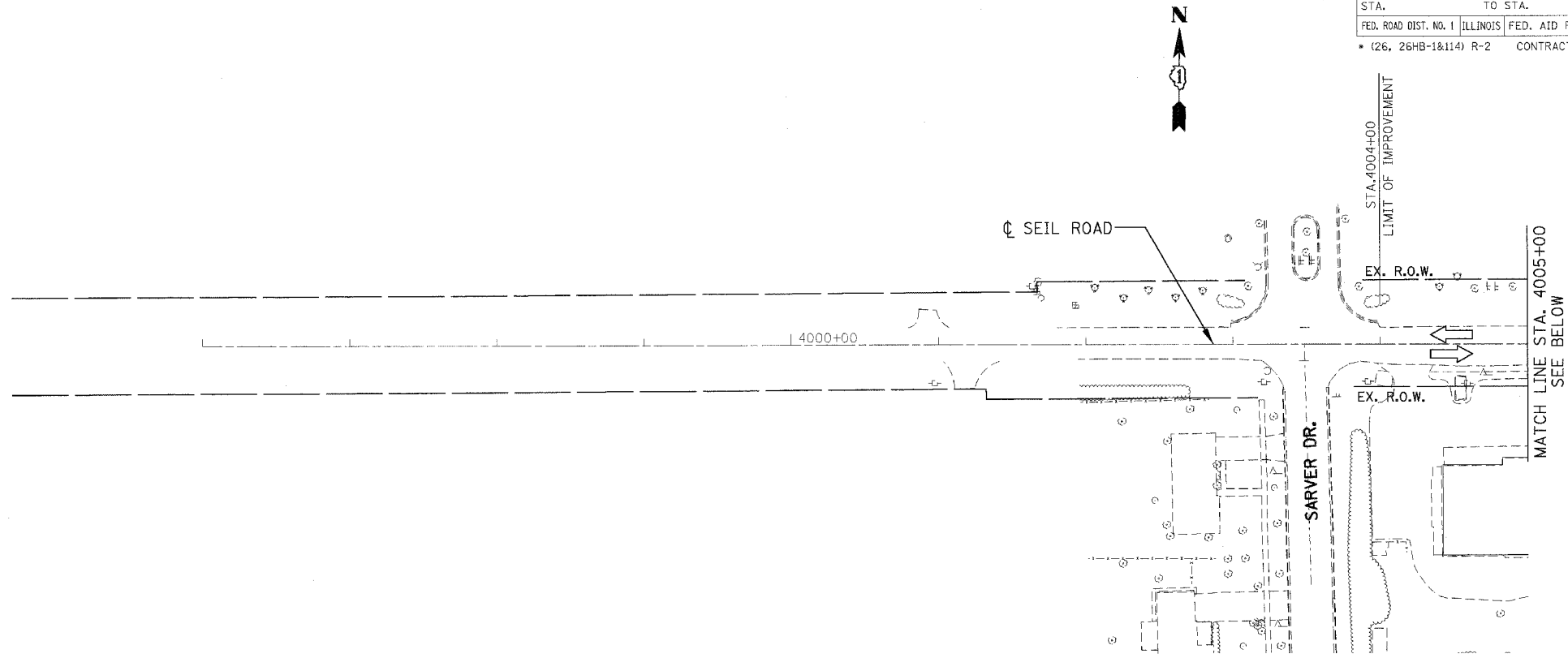


**NOTES :**

1. TRAFFIC CONTROL AND PROTECTION FOR THE TEMPORARY RUNAROUND SHALL BE IN ACCORDANCE WITH STANDARD 701331.
2. THE CONTRACTOR SHALL STAGE HIS OPERATION SO AS TO PERMIT ACCESS TO LOCAL RESIDENCES AND COMMERCIAL SHOPS.
3. ANY CONFLICTING PAVEMENT MARKING SHALL BE REMOVED.



**LEGEND**

- WORK ZONE
- TEMPORARY PAVEMENT
- TEMP. PVMT - PREVIOUS STAGE
- CLASS D PATCHES (TYPE AND THICKNESS SPECIFIED AT EACH PATCH LOCATION)
- PAVEMENT REMOVAL
- PAVED SHOULDER REMOVAL (INCL. GORES)
- TRAFFIC FLOW

**LEGEND**

- ① EPOXY PAVEMENT MARKING - LINE 4" (WHITE)
- ② TEMPORARY PAVEMENT MARKING - 4" (WHITE)
- ③ TEMPORARY PAVEMENT MARKING - 4" (YELLOW)
- ④ EPOXY PAVEMENT MARKING - LINE 4" (YELLOW)
- ⑤ TEMPORARY PAVEMENT MARKING - 8" (WHITE)
- ⑥ TEMPORARY PAVEMENT MARKING - 12" (WHITE)
- ⑦ EPOXY PAVEMENT MARKING - LINE 5" (WHITE), 10' DASH-30' SKIP
- ⑧ TEMPORARY PAVEMENT MARKING - 24" (WHITE)
- ⑨ PAVEMENT MARKING TAPE, TYPE III - LETTERS AND SYMBOLS
- ⑩ PAVEMENT MARKING TAPE, TYPE III - 4" (WHITE)
- ⑪ PAVEMENT MARKING TAPE, TYPE III - 4" (YELLOW)
- ⑫ PAVEMENT MARKING TAPE, TYPE III - 6" (WHITE)
- ⑬ PAVEMENT MARKING TAPE, TYPE III - 8" (WHITE)
- ⑭ PAVEMENT MARKING TAPE, TYPE III - 12" (WHITE)
- ⑮ PAVEMENT MARKING TAPE, TYPE III - 12" (YELLOW)
- ⑯ PAVEMENT MARKING TAPE, TYPE III - 24" (WHITE)
- ⑰ PAVEMENT MARKING TAPE, TYPE III - 5" (WHITE), 10' DASH-30' SKIP

**MOT24 REVISIONS**

NAME	DATE

ILLINOIS DEPARTMENT OF TRANSPORTATION  
FAI 55 AT FAP 338 ILLINOIS ROUTE 59  
SECTION: (26, 26HB-1&114) R-2  
**MAINTENANCE OF TRAFFIC  
PRE STAGE B  
STA. 4002+18 TO STA. 4017+00**

SCALE: 1" = 50'  
DATE: 03/14/08  
DRAWN BY: JB  
CHECKED BY: ACL

**TENG**  
TENG & ASSOCIATES, INC.  
ENGINEERS/ARCHITECTS/PLANNERS  
215 N. MEADOW AVE. CHICAGO, IL 60601  
TELEPHONE: 312.943.8600