

F.A.I. RTE.	SECTION	COUNTY	TOTAL SHEETS	SHEET NO.
55		WILL	608	77
STA.		TO STA.		
FED. ROAD DIST. NO. 1		ILLINOIS FED. AID PROJECT		
		CONTRACT NO. 60363		

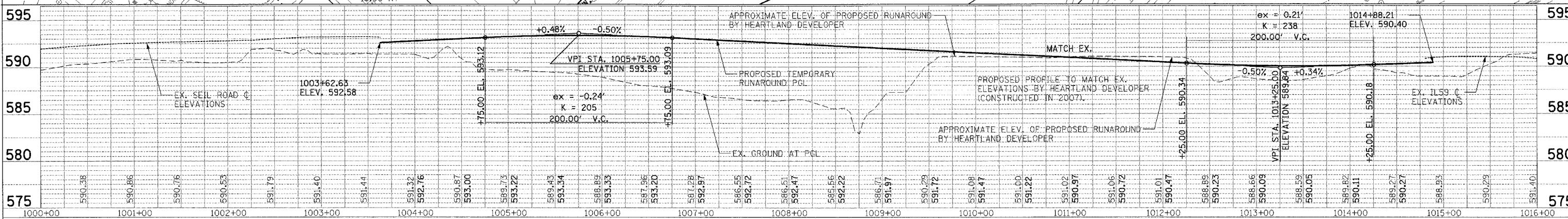
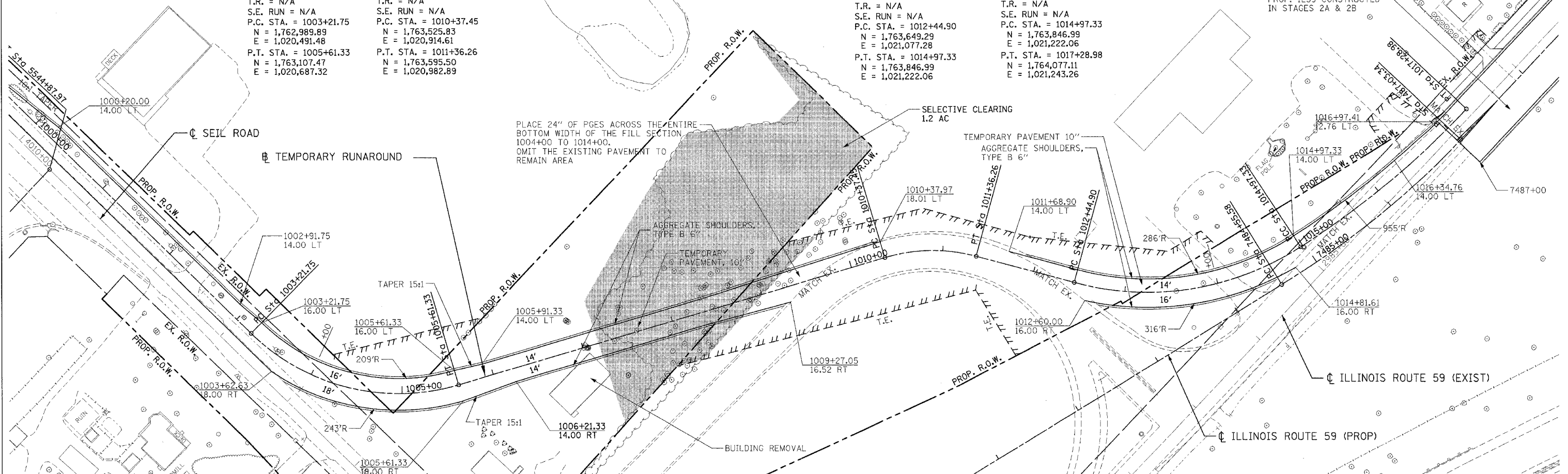
PROP. CURVE 1
 PI STA. = 1004+54.31
 N = 1,762,990.99
 E = 1,020,624.03
 $\Delta = 61^\circ 00' 32''$ (LT)
 D = 25° 27' 53"
 R = 225.00'
 T = 132.56'
 L = 239.58'
 E = 36.15'
 $e = 0.02$
 T.R. = N/A
 S.E. RUN = N/A
 P.C. STA. = 1003+21.75
 N = 1,762,989.89
 E = 1,020,491.48
 P.T. STA. = 1005+61.33
 N = 1,763,107.47
 E = 1,020,687.32

PROP. CURVE 2
 PI STA. = 1010+88.16
 N = 1,763,570.39
 E = 1,020,938.83
 $\Delta = 31^\circ 48' 25''$ (RT)
 D = 32° 11' 19"
 R = 178.00'
 T = 50.72'
 L = 98.81'
 E = 7.08'
 $e = N/A$
 T.R. = N/A
 S.E. RUN = N/A
 P.C. STA. = 1010+37.45
 N = 1,763,525.83
 E = 1,020,914.61
 P.T. STA. = 1011+36.26
 N = 1,763,595.50
 E = 1,020,982.89

TEMPORARY RUNAROUND
 SEE SHEET 76 FOR
 START OF TEMP RUNAROUND
 STA. 995+84.99
 N = 1,762,983.78
 E = 1,019,754.75
 STA. 1017+28.98
 N = 1,764,077.11
 E = 1,021,243.26

PROP. CURVE 3
 PI STA. = 1013+79.13
 N = 1,763,715.75
 E = 1,021,193.90
 $\Delta = 48^\circ 12' 41''$ (LT)
 D = 19° 05' 55"
 R = 300.00'
 T = 134.23'
 L = 252.43'
 E = 28.66'
 $e = 0.02$
 T.R. = N/A
 S.E. RUN = N/A
 P.C. STA. = 1012+44.90
 N = 1,763,649.29
 E = 1,021,077.28
 P.T. STA. = 1014+97.33
 N = 1,763,846.99
 E = 1,021,222.06

PROP. CURVE 4
 PI STA. = 1016+13.71
 N = 1,763,960.78
 E = 1,021,246.48
 $\Delta = 13^\circ 41' 49''$ (LT)
 D = 5° 54' 46"
 R = 969.00'
 T = 116.38'
 L = 231.65'
 E = 6.96'
 $e = 0.02$
 T.R. = N/A
 S.E. RUN = N/A
 P.C. STA. = 1014+97.33
 N = 1,763,846.99
 E = 1,021,222.06
 P.T. STA. = 1017+28.98
 N = 1,764,077.11
 E = 1,021,243.26



LEGEND

	PAVEMENT REMOVAL
	PAVED SHOULDER REMOVAL (INCLUDES GORE AREAS)
	DRIVEWAY PAVEMENT REMOVAL (INCL. PARKING LOTS)
	AGGREGATE REMOVAL TO BE PAID FOR AS EARTH EXCAVATION
	HOT-MIX ASPHALT SURFACE REMOVAL, 2" SEE SHEET 422 FOR DETAILS
	LINEAR REMOVALS
	TREE REMOVAL (WITH DIAMETER)
	BUSH/ SHRUB REMOVAL (REMOVED INCLUDED IN COST OF EARTHWORK)
	TREE TRUNK PROTECTION (TTP)

- ① NB & SB IL59 RAMP
PCC PVT 9 3/4 JOINT
STAB SUBBASE HMA 4
AGG SUBGRADE 12
- ② HMA SHOULDERS 8
AGG SUBGRADE 12
- ③ I-55 AUX LANE WIDENING
HMA PAVT FD 17
AGG SUBGRADE 12
- ④ HMA SHOULDERS 13
AGG SUBGRADE 12
- ⑤ IL ROUTE 59
PCC PVT 9 3/4 JOINT
AGG SUBGRADE 12

- ⑥ SEIL ROAD
HMA PAVT FD 15 1/4
AGG SUBGRADE 12
- ⑦ EAST FRONTAGE ROAD
HMA PAVT FD 9
AGG SUBGRADE 12
- ⑧ PCC DRIVEWAY PAVT 8
- ⑨ PCC DRIVEWAY PAVT 6

NOTES:

- SEE SHEET 216 TO SHEET 220 FOR DRAINAGE SCHEDULE.
- COST OF PLANTER REMOVAL SHALL BE INCLUDED IN THE COST OF PAVEMENT REMOVAL.
- SEE SHEET 421 FOR DRIVEWAY SCH. ALL IL59 DRIVEWAYS SHALL BE HMA BEYOND R.O.W. LIMITS EXCEPT AS NOTED.

REVISIONS	
NAME	DATE

ILLINOIS DEPARTMENT OF TRANSPORTATION
 F.A.I. 59 AT F.A.P. 338 ILLINOIS ROUTE 59
 SECTION: (26, 26HB-1&114) R-2

PROPOSED TEMPORARY RUNAROUND DETAIL

SCALE: VERT. 1" = 5'
 HORIZ. 1" = 50'

DATE: 03/14/08

DRAWN BY: JB
 CHECKED BY: ACL

TENG

TENG & ASSOCIATES, INC.
 ENGINEERING ARCHITECTURE INTERIORS
 286 N. MICHIGAN AVE. CHICAGO, IL 60601
 TEL: 312.427.0000