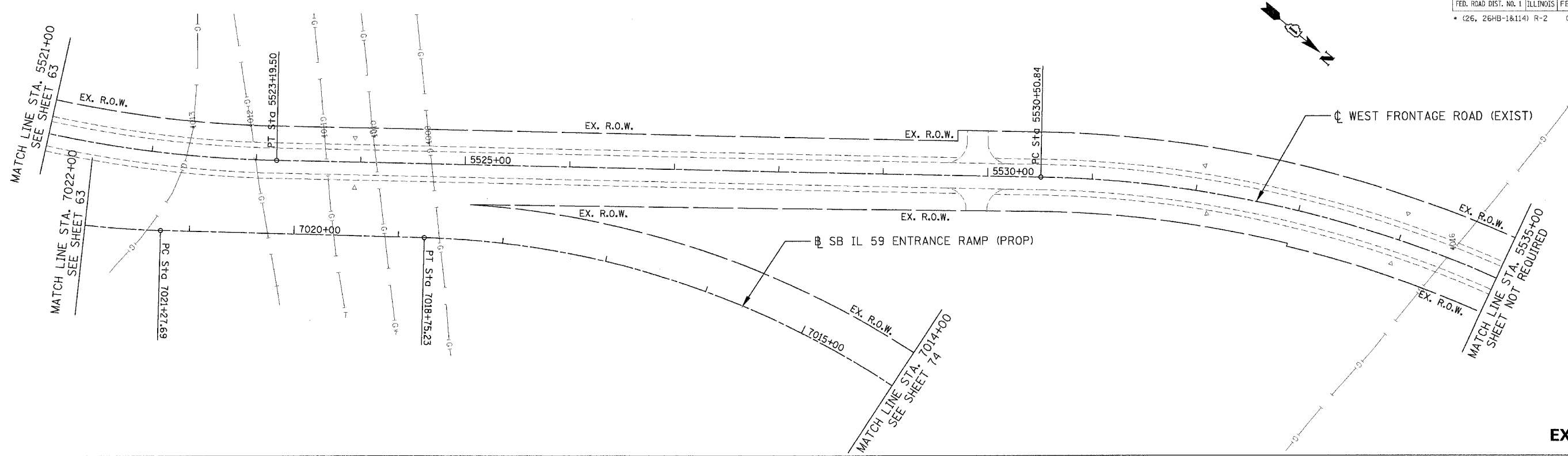
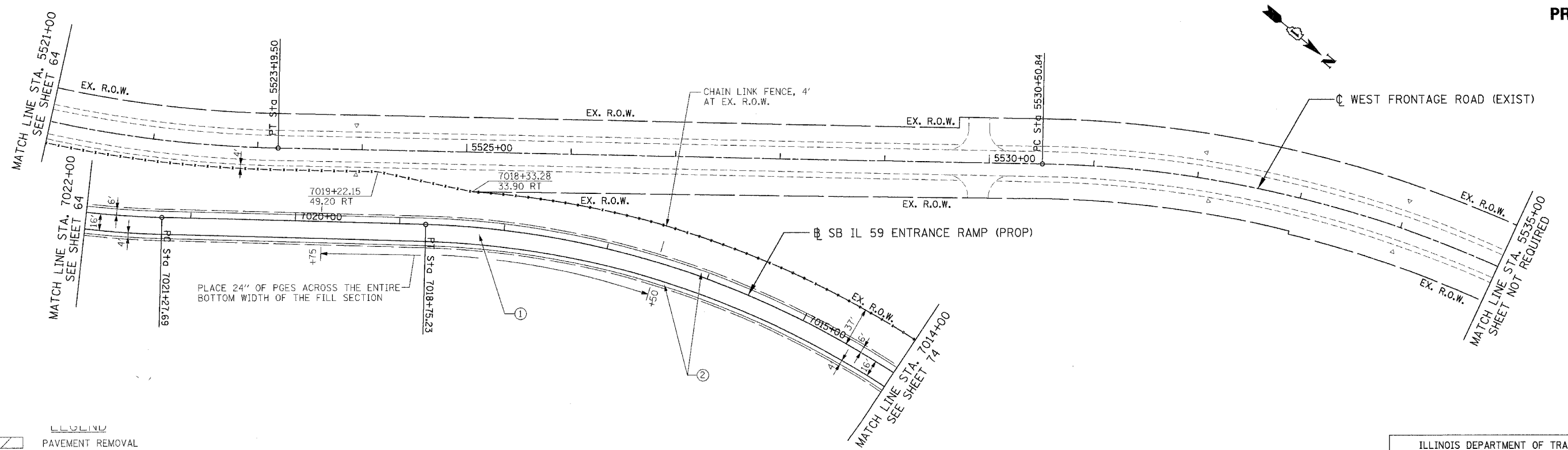


F.A.I. RTE.	SECTION	COUNTY	TOTAL SHEETS	SHEET NO.
55	*	WILL	608	73
STA.		TO STA.		
FED. ROAD DIST. NO. 1		ILLINOIS		FED. AID PROJECT
				* (26, 26HB-1&114) R-2 CONTRACT NO. 60363



EXISTING



PROPOSED

D:\T\0266\0266.DWG, ... SURFACE.DWG, ... 2/23/08 13:50:00

LEGEND

	PAVEMENT REMOVAL
	PAVED SHOULDER REMOVAL (INCLUDES GORE AREAS)
	DRIVEWAY PAVEMENT REMOVAL (INCL. PARKING LOTS)
	AGGREGATE REMOVAL TO BE PAID FOR AS EARTH EXCAVATION
	HOT-MIX ASPHALT SURFACE REMOVAL, 2\"/>

- | | |
|--|---|
| <p>① NB & SB IL59 RAMPS
PCC PVT 9 3/4\"/> </p> | <p>④ HMA SHOULDERS 13
AGG SUBGRADE 12</p> |
| <p>② HMA SHOULDERS 8
AGG SUBGRADE 12</p> | <p>⑤ IL ROUTE 59
PCC PVT 9 3/4\"/> </p> |
| <p>③ I-55 AUX LANE WIDENING
HMA PAVT FD 17
AGG SUBGRADE 12</p> | <p>⑥ SEIL ROAD
HMA PAVT FD 15 3/4\"/> </p> |
| | <p>⑦ EAST FRONTAGE ROAD
HMA PAVT FD 9
AGG SUBGRADE 12</p> |
| | <p>⑧ PCC DRIVEWAY PAVT 8</p> |
| | <p>⑨ PCC DRIVEWAY PAVT 6</p> |

NOTES:

- SEE SHEET 216 TO SHEET 220 FOR DRAINAGE SCHEDULE.
- COST OF PLANTER REMOVAL SHALL BE INCLUDED IN THE COST OF PAVEMENT REMOVAL.
- SEE SHEET 421 FOR DRIVEWAY SCH. ALL IL59 DRIVEWAYS SHALL BE HMA BEYOND R.O.W. LIMITS EXCEPT AS NOTED.

REVISIONS	
NAME	DATE

9 OF 12

ILLINOIS DEPARTMENT OF TRANSPORTATION
 FAI 55 AT FAP 338 ILLINOIS ROUTE 59
 SECTION: (26, 26HB-1&114) R-2

**EXISTING AND PROPOSED
 IL59 SB RAMP ROADWAY PLAN
 STA. 7014+00 TO STA 7022+00**

SCALE: 1" = 50'
 DATE: 03/14/08

DRAWN BY: JB
 CHECKED BY: ACL

TENG

TENG & ASSOCIATES, INC.
 ENGINEERS AND PLANNERS
 260 N. MICHIGAN AVE. CHICAGO, IL 60601
 TEL: 312.467.8200