

STATE OF ILLINOIS
DEPARTMENT OF TRANSPORTATION

F.A.P. RTE.	SECTION	COUNTY	TOTAL SHEETS	SHEET NO.
609	761	ST CLAIR	7	1
		ILLINOIS	CONTRACT NO. 76U75	

PROPOSED HIGHWAY PLANS

FAP ROUTE 609 (IL 163)
SECTION 761
MISCELLANEOUS IMPROVEMENTS AT
BRIDGE APPROACH ROADWAY - CM
ST CLAIR COUNTY

C-98-139-25

D-98-070-25



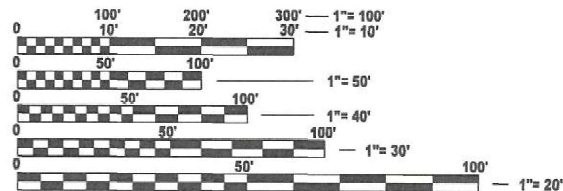
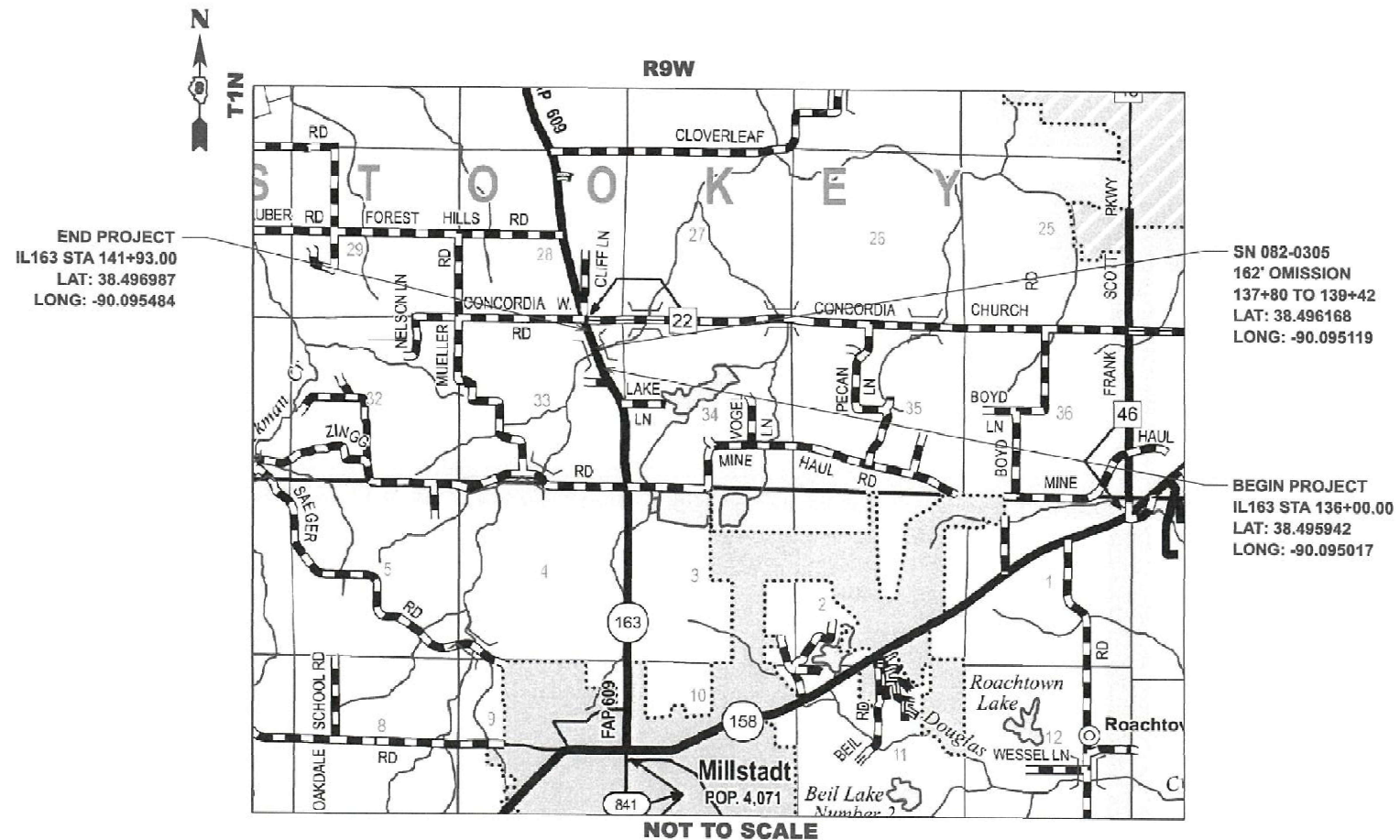
FOR INDEX OF SHEETS, SEE SHEET NO. 2

TRAFFIC DATA

IL 163

2023 ADT = 3500 (ACTUAL)
2026 ADT = 3550 (ESTIMATED)
2046 ADT = 3900 (ESTIMATED)
SU = 6.6% MU = 2.6%

FUNCTIONAL CLASSIFICATION: MINOR ARTERIAL



FULL SIZE PLANS HAVE BEEN PREPARED USING STANDARD ENGINEERING SCALES. REDUCED SIZED PLANS WILL NOT CONFORM TO STANDARD SCALES. IN MAKING MEASUREMENTS ON REDUCED PLANS, THE ABOVE SCALES MAY BE USED.

J.U.L.I.E.
JOINT UTILITY LOCATION INFORMATION FOR EXCAVATION
1-800-892-0123
OR 811

PROJECT ENGINEER: BILLIE OWEN
PROJECT MANAGER: MIKE BERG

CONTRACT NO. 76U75

GROSS LENGTH = 593 FT. = 0.112 MILE
NET LENGTH = 431 FT. = 0.081 MILE

SN 082-0305
162' OMISSION
137+80 TO 139+42
LAT: 38.496168
LONG: -90.095119

BEGIN PROJECT
IL163 STA 136+00.00
LAT: 38.495942
LONG: -90.095017

STATE OF ILLINOIS
DEPARTMENT OF TRANSPORTATION

SUBMITTED Feb. 5 2026
Zia T... REGIONAL ENGINEER

March 20, 2026
[Signature] ENGINEER OF DESIGN AND ENVIRONMENT

March 20, 2026
[Signature] DIRECTOR OF HIGHWAYS PROJECT IMPLEMENTATION

PRINTED BY THE AUTHORITY
OF THE STATE OF ILLINOIS

CODE NO.	ITEM	UNIT	TOTAL QUANTITY	CONSTR. CODE	
				100% STATE IL 163	
				ROADWAY	
				0005	RURAL
40600990	TEMPORARY RAMP	SQ YD	62	62	
40602970	HOT-MIX ASPHALT BINDER COURSE, IL-9.5FG, N70	TON	80	80	
40604052	HOT-MIX ASPHALT SURFACE COURSE, IL-9.5, MIX "C", N70	TON	97	97	
40800029	BITUMINOUS MATERIALS (TACK COAT)	POUND	776	776	
44000160	HOT-MIX ASPHALT SURFACE REMOVAL, 2 3/4"	SQ YD	1149	1149	
67100100	MOBILIZATION	L SUM	1	1	
70100450	TRAFFIC CONTROL AND PROTECTION, STANDARD 701201	L SUM	1	1	
70100460	TRAFFIC CONTROL AND PROTECTION, STANDARD 701306	L SUM	1	1	
70107025	CHANGEABLE MESSAGE SIGN	CAL DA	64	64	
70300100	SHORT TERM PAVEMENT MARKING	FOOT	52	52	
70300150	SHORT TERM PAVEMENT MARKING REMOVAL	SQ FT	10	10	
70300221	TEMPORARY PAVEMENT MARKING - LINE 4"- PAINT	FOOT	1490	1490	
* 78000200	THERMOPLASTIC PAVEMENT MARKING - LINE 4"	FOOT	1490	1490	
* 78100100	RAISED REFLECTIVE PAVEMENT MARKER	EACH	5	5	

* SPECIALTY ITEM

MODEL - Summary of Quantities (Sheet)
FILE NAME: c:\p\work\76U75\01\David.L.Shook@Illinois.gov\1141711\0876U75-sht-SOO.dgn

USER NAME = david.l.shook	DESIGNED -	REVISED -	STATE OF ILLINOIS DEPARTMENT OF TRANSPORTATION	SUMMARY OF QUANTITIES				F.A.P. RTE.	SECTION	COUNTY	TOTAL SHEETS	SHEET NO.
	DRAWN -	REVISED -						609	76I	ST CLAIR	7	3
	CHECKED -	REVISED -		CONTRACT NO. 76U75								
PLOT DATE = 1/5/2026	DATE -	REVISED -		SCALE:	SHEET 1	OF 2	SHEETS	STA.	TO STA.	ILLINOIS FED. AID PROJECT		

RESURFACING SCHEDULE									
STATION			LENGTH	WIDTH	HMA SURFACE REMOVAL 2 3/4"	BITUMINOUS MATERIALS (TACK COAT)	HMA BINDER COURSE 1 1/4"	HMA SURFACE COURSE 1 1/2"	
			FEET	FEET	SQ YD	POUND	TON	TON	
136+00	TO	137+80	180	24	480	324	34	40	
137+80	TO	139+42	Bridge Omission						
139+42	TO	141+93	251	24	669	452	47	56	
TOTAL					1149	776	80	97	

PAVEMENT MARKING SCHEDULE											
STATION			THERMOPLASTIC AND TEMPORARY PAVEMENT MARKING			RAISED REFLECTIVE PAVEMENT MARKER	RAISED REFLECTIVE PAVEMENT MARKER REMOVAL	PAVEMENT MARKING REMOVAL - WATER BLASTING	SHORT TERM PAVEMENT MARKING (2 APPLICATIONS)	SHORT TERM PAVEMENT MARKING REMOVAL	
			LINE - 4" THERMOPLASTIC MARKING								TWO WAY AMBER
			YELLOW SOLID	YELLOW SKIP DASH	WHITE SOLID	EACH					
			FEET	FEET	FEET		EACH				
136+00	TO	137+80	180	50	360	2	2	197	20	4	
137+80	TO	139+42	Bridge Omission								
139+42	TO	141+93	328	70	502	3	3	300	32	6	
TOTAL			508	120	862	5	5	497	52	10	
ABSOLUTE TOTAL			1490								

TEMPORARY RAMP SCHEDULE				
CL OF ENTRANCE OR SIDEROAD	LOCATION	LENGTH	WIDTH	TEMPORARY RAMP
		FEET	FEET	SQ YD
136+00	BEGIN PROJECT	5	24	13
137+80	Bridge Approach SE	5	24	13
139+42	Bridge Approach NW	5	24	13
140+56	Bridge Lane Entrance	1.5	50	8
141+93	END PROJECT	5	24	13
TOTAL				62

MODEL: Schedules (Sheet)
 FILE NAME: c:\p\work\pav\10\141711\0876U75-sht-schedule.dgn

USER NAME = david.l.shook	DESIGNED -	REVISED -
	DRAWN -	REVISED -
	CHECKED -	REVISED -
PLOT DATE = 12/12/2025	DATE -	REVISED -

STATE OF ILLINOIS
DEPARTMENT OF TRANSPORTATION

SCALE:				SHEET 1	OF 1	SHEETS	STA.	TO STA.
--------	--	--	--	---------	------	--------	------	---------

F.A.P RTE.	SECTION	COUNTY	TOTAL SHEETS	SHEET NO.
609	76I	ST CLAIR	7	6
CONTRACT NO. 76U75				
ILLINOIS FED. AID PROJECT				

