

STATE OF ILLINOIS  
DEPARTMENT OF TRANSPORTATION

F.A. RTE.	SECTION	COUNTY	TOTAL SHEETS	SHEET NO.
**	2025-2034-LR	ILLINOIS	5	1
			CONTRACT NO. 80B80	

\*\*FAI 94, FAP 346 \*COOK, LAKE

D-91-033-26

FOR INDEX OF SHEETS, SEE SHEET NO. 2

**PROPOSED  
HIGHWAY PLANS**

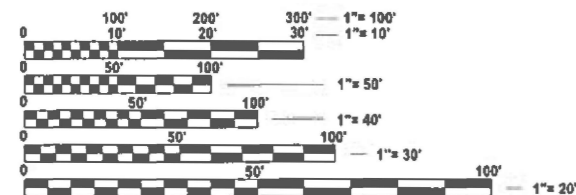
**FAI ROUTE 94 / FAP ROUTE 346: I-94 (EDENS EXPWY)  
US 41 (SKOKIE HWY)  
CLAVEY RD TO I-90 (KENNEDY EXPWY)  
SECTION 2025-2034-LR**

**EXPRESSWAY HIGHWAY CLEANING (DEBRIS/LITTER PICKING)  
COOK AND LAKE COUNTIES**

C-91-039-26



**LOCATION MAP - SEE  
SHEET INDEX**



FULL SIZE PLANS HAVE BEEN PREPARED USING STANDARD ENGINEERING SCALES. REDUCED SIZED PLANS WILL NOT CONFORM TO STANDARD SCALES. IN MAKING MEASUREMENTS ON REDUCED PLANS, THE ABOVE SCALES MAY BE USED.

J.U.L.I.E.  
JOINT UTILITY LOCATION INFORMATION FOR EXCAVATION  
1-800-892-0123  
OR 811

PROJECT ENGINEER OSCAR OLIVEROS - (847) 705-4548  
PROJECT MANAGER JACEK EJMONT - (847) 705-4641

CONTRACT NO. 80B80

GROSS LENGTH = x.xx FT. = x.xxx MILE  
NET LENGTH = x.xx FT. = x.xxx MILE

STATE OF ILLINOIS  
DEPARTMENT OF TRANSPORTATION

SUBMITTED Dec 12 2025  
*[Signature]* REGIONAL ENGINEER

March 20 2026  
*[Signature]* ENGINEER OF DESIGN AND ENVIRONMENT

March 20 2026  
*[Signature]* DIRECTOR OF HIGHWAYS PROJECT IMPLEMENTATION

**PRINTED BY THE AUTHORITY  
OF THE STATE OF ILLINOIS**

**INDEX OF SHEETS**

**SHEET NO.**

**DESCRIPTION**

1	TITLE SHEET
2	INDEX OF SHEETS, STATE STANDARDS
3	GENERAL NOTES, SUMMARY OF QUANTITIES, & TYPICAL EXPRESSWAY CROSS-SECTIONS
4	EXPRESSWAY CLEANING MAP I-94 (EDENS EXPWY) & US-41 (SKOKIE HWY)
5	TRAFFIC CONTROL DETAILS FOR FREEWAY SHOULDER CLOSURES AND PARTIAL RAMP CLOSURES (TC-17)

**STATE STANDARDS**

**STANDARD NO.**

**DESCRIPTION**

701106-02	OFF-ROAD OPERATION MULTILANE, MORE THAN 15' AWAY
701426-09	LANE CLOSURE, MULTILANE, INTERMITTENT OR MOVING OPER., FOR SPEEDS ≥ 45 MPH
701901-11	TRAFFIC CONTROL DEVICES

MODEL: GenNote01 [Sheet]  
FILE NAME: c:\p\work\pwr\thanh.vo\illinois.gov\1168315\103326-shr-gennote.dgn

USER NAME = thanh.vo	DESIGNED -	REVISED -
	DRAWN -	REVISED -
	CHECKED -	REVISED -
PLOT DATE = 10/24/2025	DATE -	REVISED -

**STATE OF ILLINOIS  
DEPARTMENT OF TRANSPORTATION**

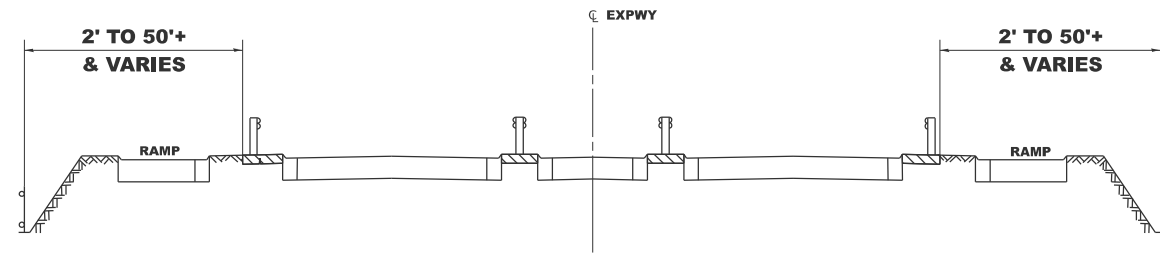
**INDEX OF SHEETS AND STATE STANDARDS**

SCALE: NONE SHEET 000 OF # SHEETS STA. TO STA.

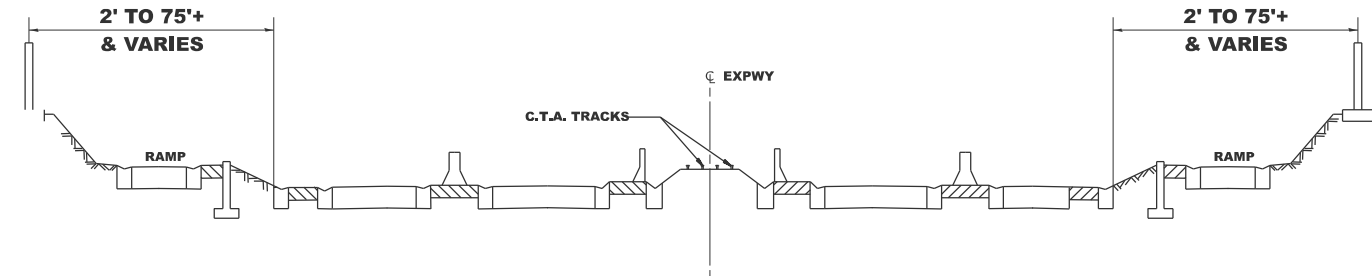
F.A.I RTE.	SECTION	COUNTY	TOTAL SHEETS	SHEET NO.
**	2025-2034-LR	*	5	2
CONTRACT NO. 80B80				
ILLINOIS		FED. AID PROJECT		

\*\*I-94 / U.S. ROUTE 41

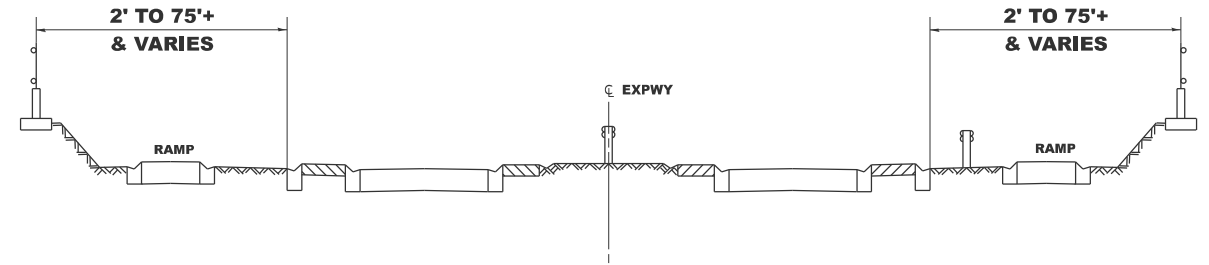
\*COOK, LAKE



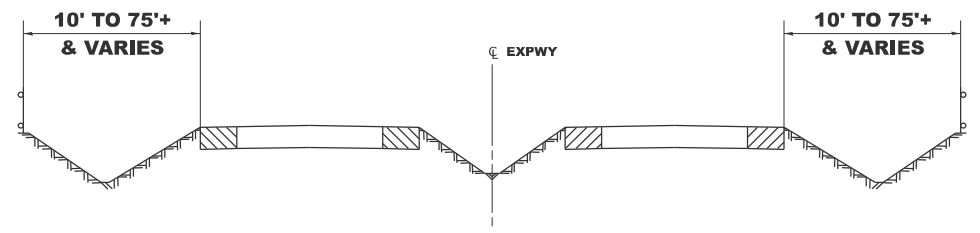
**TYPICAL EXPRESSWAY CROSS-SECTION NO. 1**



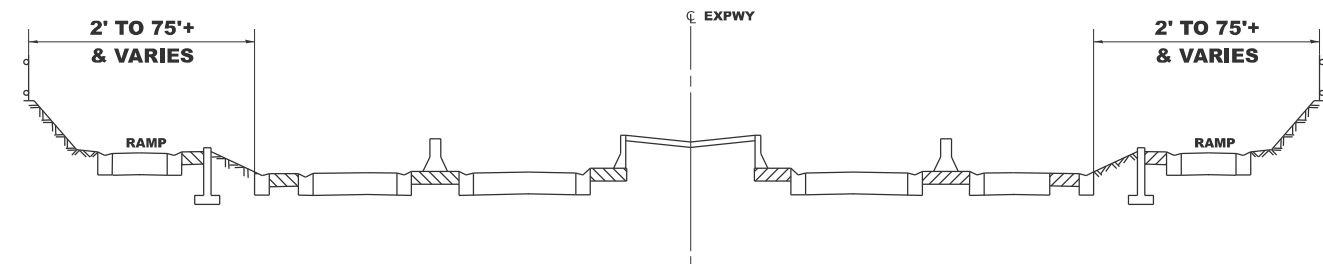
**TYPICAL EXPRESSWAY CROSS-SECTION NO. 2**



**TYPICAL EXPRESSWAY CROSS-SECTION NO. 3**



**TYPICAL EXPRESSWAY CROSS-SECTION NO. 4**



**TYPICAL EXPRESSWAY CROSS-SECTION NO. 5**

**NOTES:**

1. SCHEDULE MAY VARY AS DIRECTED BY THE ENGINEER.
2. NO DAILY CONTRACTOR WORK REQUESTS/SCHEDULING SHALL BE AUTHORIZED OR APPROVED TO START WHEN IT IS DETERMINED BY THE ENGINEER THAT WEATHER CONDITIONS WILL BE UNFAVORABLE. APPROVAL OF DAILY CONTRACTOR WORK SCHEDULE REQUEST SHALL BE SOLELY DETERMINED BY THE ENGINEER.
3. ALL SHOULDER CLOSURES SHALL BE IMMEDIATELY REMOVED DURING ALL ADVERSE WEATHER CONDITIONS WITHOUT EXCEPTION, INCLUDING BUT NOT LIMITED TO RAIN, WET ROAD SURFACE (SPRAY FROM TIRES), MIST, DRIZZLE, SLEET, SNOW, FOG AND ANY OTHER CIRCUMSTANCE DETERMINED UNSAFE BY THE ENGINEER. THE CONTRACTOR SHALL IMPLEMENT THIS CONTRACT REQUIREMENT IMMEDIATELY WITHOUT WAITING FOR DEPARTMENT'S INSTRUCTION.
4. NO WORK WILL BE ALLOWED ON THE FOLLOWING LEGAL HOLIDAYS UNLESS IT IS CONSIDERED AN EMERGENCY, IMMEDIATE HAZARD OR ANY WORK AS DESIGNATED BY THE DEPARTMENT THAT REQUIRES FIRST PRIORITY CORRECTIVE ACTION:  
  
 EASTER HOLIDAY  
 MEMORIAL DAY HOLIDAY  
 INDEPENDENCE DAY HOLIDAY  
 LABOR DAY HOLIDAY  
 THANKSGIVING HOLIDAY  
 CHRISTMAS HOLIDAY  
 NEW YEARS HOLIDAY

**SUMMARY OF QUANTITIES**

CODE NO.	ITEM	UNIT	COOK LAKE		
			URBAN	100 % STATE 0044	100 % STATE 0044
X0326643	LITTER PICKING	MILE	375.1	356.3	18.8

MODEL: \jrd (Sheet)  
 FILE NAME: c:\p\work\pwr\thanh.vo\illmod\gov\1168315\103326-shr-typical.dgn

USER NAME = thanh.vo	DESIGNED -	REVISED -
	DRAWN -	REVISED -
	CHECKED -	REVISED -
PLOT DATE = 10/16/2025	DATE -	REVISED -

**STATE OF ILLINOIS  
DEPARTMENT OF TRANSPORTATION**

**GENERAL NOTES, SUMMARY OF QUANTITIES, &  
TYPICAL EXPRESSWAY CROSS-SECTIONS**

SCALE: SHEET 1 OF 1 SHEETS STA. TO STA.

F.A.I RTE.	SECTION	COUNTY	TOTAL SHEETS	SHEET NO.
**	2025-2034-LR	*	5	3
CONTRACT NO. 80B80			ILLINOIS FED. AID PROJECT	

- DISTRICT NO. 1
- STATE HIGHWAYS & EXPRESSWAYS WITHIN STATE JURISDICTION (EXCEPT TOLLWAYS)
  - STATE HIGHWAYS & EXPRESSWAYS TO BE CLEANED
  - FUTURE HIGHWAYS
  - VARIOUS AGENCIES HIGHWAYS



MODEL: MAPS (Sheet)  
 FILE NAME: c:\p\work\wv\tothanh.vo\illmodr.gov\1168315\103326-sh-detais.dgn

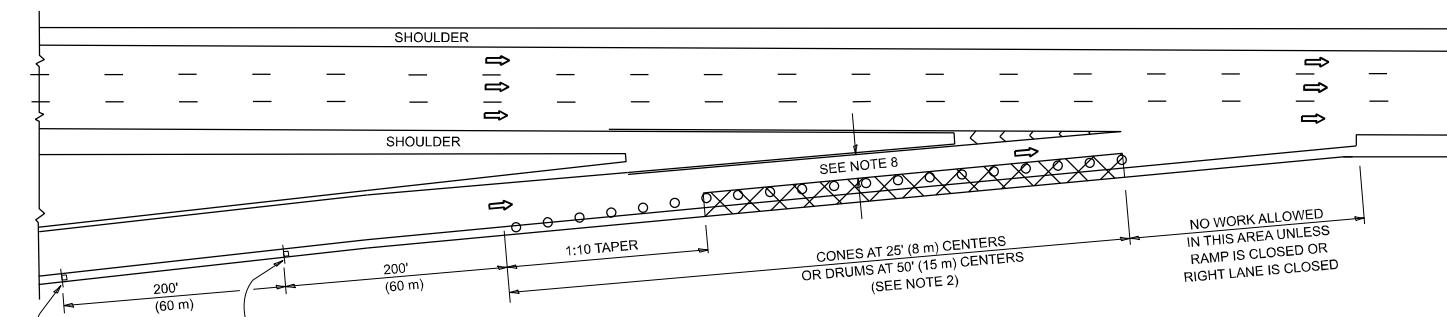
USER NAME = thanh.vo	DESIGNED -	REVISED -
	DRAWN -	REVISED -
PLOT SCALE = \$SCALE\$	CHECKED -	REVISED -
PLOT DATE = 10/16/2025	DATE -	REVISED -

**STATE OF ILLINOIS**  
**DEPARTMENT OF TRANSPORTATION**

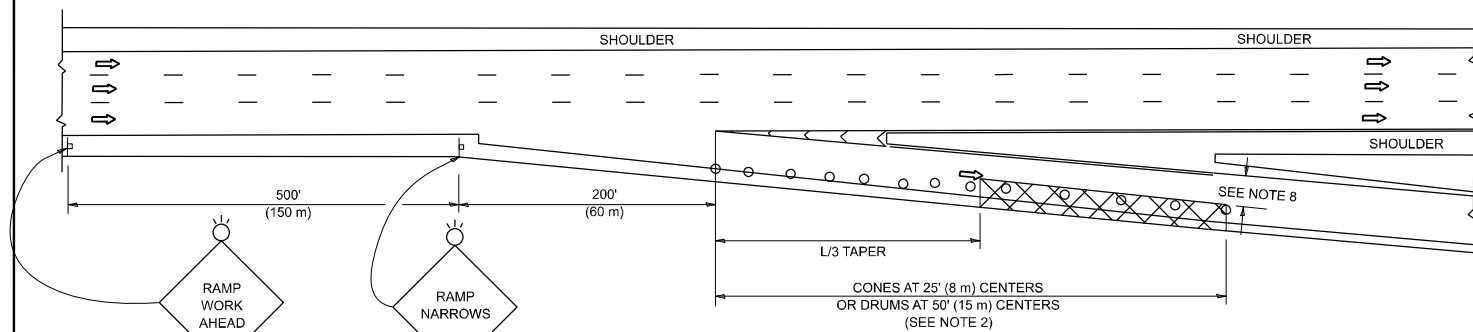
<b>EXPRESSWAY CLEANING MAP</b>	
<b>I-94 (EDENS EXPWY) &amp; US-41 (SKOKIE HWY)</b>	
SCALE:	ST. TO STA.
SHEET	OF 2 SHEETS

F.A.I RTE.	SECTION	COUNTY	TOTAL SHEETS	SHEET NO.
**	2025-2034-LR		5	4
CONTRACT NO. 80B80				
ILLINOIS		FED. AID PROJECT		

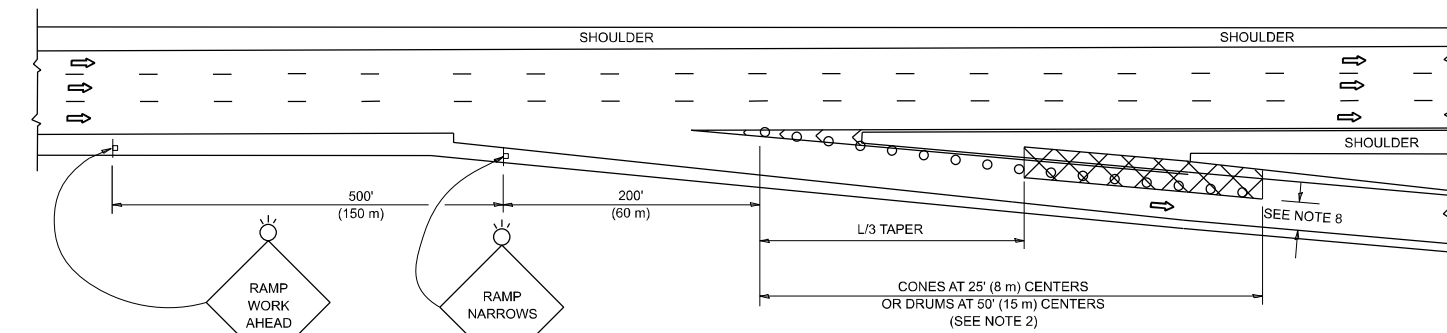
**PARTIAL RAMP CLOSURE DETAILS**



**TYPICAL ENTRANCE RAMP**



**TYPICAL EXIT RAMP**



**TYPICAL EXIT RAMP**

**SYMBOLS**

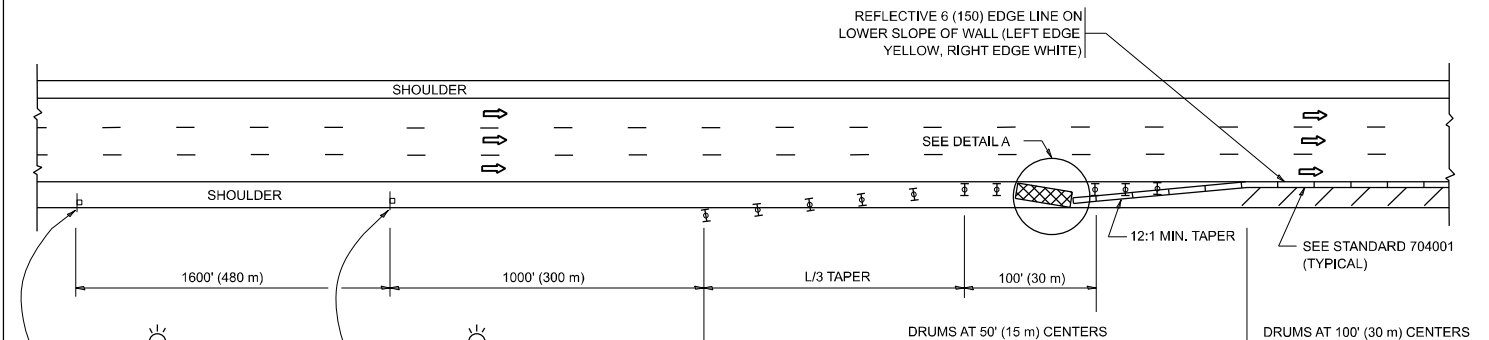
- ACTIVE WORK AREA
- SIGN ON PORTABLE OR PERMANENT SUPPORT
- FLAGGER WITH CONTROL SIGN
- TYPE II BARRICADE OR DRUM
- CONE, DRUM OR BARRICADE
- IMPACT ATTENUATOR OF TYPE AND TEST LEVEL SPECIFIED

**GENERAL NOTES:**

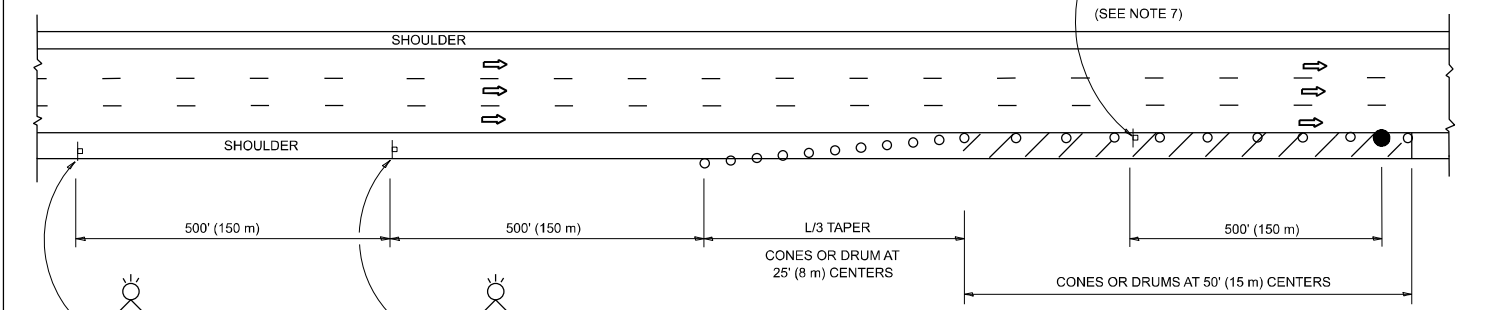
- THE "L" DISTANCE EQUALS:  

<b>SPEED LIMIT</b>	<b>FORMULAS</b>
45 mph (80 km/h)	METRIC ENGLISH
OR GREATER:	$L=0.65(W)(S)$ $L=(W)(S)$
W = WIDTH OF OFFSET IN FEET (METERS)	
S = NORMAL POSTED SPEED MPH (KM/H)	
- TYPE II BARRICADES OR DRUMS ARE REQUIRED FOR ALL NIGHTTIME CLOSURES. TYPE II BARRICADES OR DRUMS WITH MONODIRECTIONAL STEADY BURN LIGHTS ARE REQUIRED FOR DELINEATING OBSTACLES, EXCAVATIONS, OR HAZARDS EXCEEDING 100 FT (30m) IN LENGTH AT NIGHT.
- ALL SIGNS SHALL BE POST MOUNTED IF THE CLOSURE TIME EXCEEDS FOUR DAYS.
- FLASHING LIGHTS SHALL BE USED DURING THE HOURS OF DARKNESS AND SHALL BE INSTALLED ABOVE THE FIRST TWO SETS OF SIGNS.

**SHOULDER CLOSURE DETAILS**

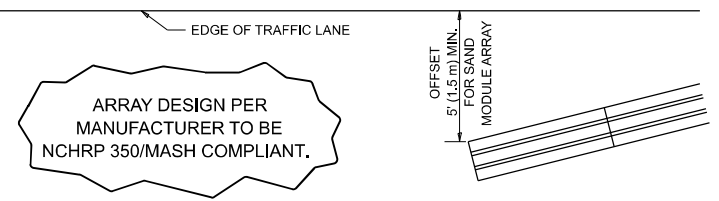


**PERMANENT SHOULDER CLOSURE**



**TEMPORARY SHOULDER CLOSURE**

- THIS DETAIL IS USED WHERE:
- VEHICLES, EQUIPMENT, WORKERS OR THEIR ACTIVITIES ENCR OACH IN AN AREA CLOSER THAN 15' (4.5 m) TO THE EDGE OF PAVEMENT FOR A PERIOD IN EXCESS OF 15 MINUTES.



**DETAIL "A"  
IMPACT ATTENUATOR, TEMPORARY  
(SEE NOTE 5)**

- THE IMPACT ATTENUATOR, TEMPORARY IS NOT REQUIRED WHEN THE TEMPORARY CONCRETE BARRIER WALL IS PROTECTED BY OR IS TIED INTO THE EXISTING GUARDRAIL. IF OFFSET IS LESS THAN 5 FEET USE NARROW USE TYPE DEVICE TO MEET NCHRP350/MASH.
- AUTHORIZATION FROM THE DISTRICT'S BUREAU OF TRAFFIC IS REQUIRED FOR ALL FREEWAY CLOSURES.
- THE FLAGGER AND FLAGGER SIGN ARE REQUIRED AT THE ABOVE WORK SITES WHEN:
  - FOUR OR MORE WORK VEHICLES ENTER THE TRAFFIC LANES IN A ONE HOUR PERIOD.
  - THE WORK ACTIVITY REQUIRES FREQUENT ENCR OACHMENT INTO THE LANE OPEN TO TRAFFIC.
 THE FLAGGER SHALL BE STATIONED APPROXIMATELY 100' (30 m) TO 200' (60 m) IN ADVANCE OF THE WORKERS.

- 12' MIN. WIDTH TANGENT SECTION  
16' MIN. WIDTH CURVE SECTION.
- TEMPORARY SHOULDER AND NON-SYSTEM INTERCHANGE PARTIAL CLOSURES ARE ALLOWED WEEKDAYS BETWEEN 9:00 A.M. AND 3:00 P.M. AND BETWEEN 7:00 P.M. AND 5:00 A.M. OR AS APPROVED BY THE EXPRESSWAY TRAFFIC OPERATIONS ENGINEER. PERMANENT SHOULDER AND PARTIAL RAMP CLOSURES WILL ONLY BE PERMITTED IF CALLED FOR IN THE PLANS OR AS APPROVED BY THE EXPRESSWAY OPERATIONS ENGINEER.

ALL DIMENSIONS ARE IN INCHES (MILLIMETERS) UNLESS OTHERWISE SHOWN.

MODEL: TC17 (Sheet)  
FILE NAME: c:\p\work\wv\illmod\gov\1168315\103326-shl-Dist-DistSigs.dgn

USER NAME = thanh.vo	DESIGNED -	REVISED - M.D. 06-13
	DRAWN - D.W.S.	REVISED - M.D. 01-18
	CHECKED -	REVISED - M.D. 10-20
PLOT DATE = 10/16/2025	DATE - 11-96	REVISED - D.S. 05-24

**STATE OF ILLINOIS  
DEPARTMENT OF TRANSPORTATION**

**TRAFFIC CONTROL DETAILS FOR FREEWAY  
SHOULDER CLOSURES AND PARTIAL RAMP CLOSURES**

SCALE: NONE SHEET 1 OF 1 SHEETS STA. TO STA.

F.A.I RTE.	SECTION	COUNTY	TOTAL SHEETS	SHEET NO.
**	2025-2034-LR	*	5	5
<b>TC-17</b>		CONTRACT NO. 80B80		
ILLINOIS FED. AID PROJECT				

\*\*1-94 / U.S. ROUTE 41

\*COOK, LAKE