

STATE OF ILLINOIS
DEPARTMENT OF TRANSPORTATION

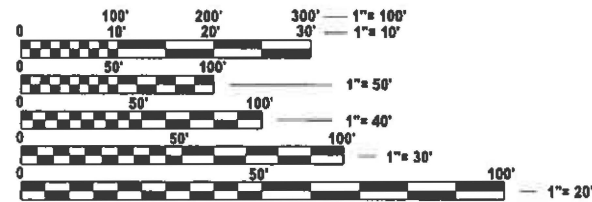
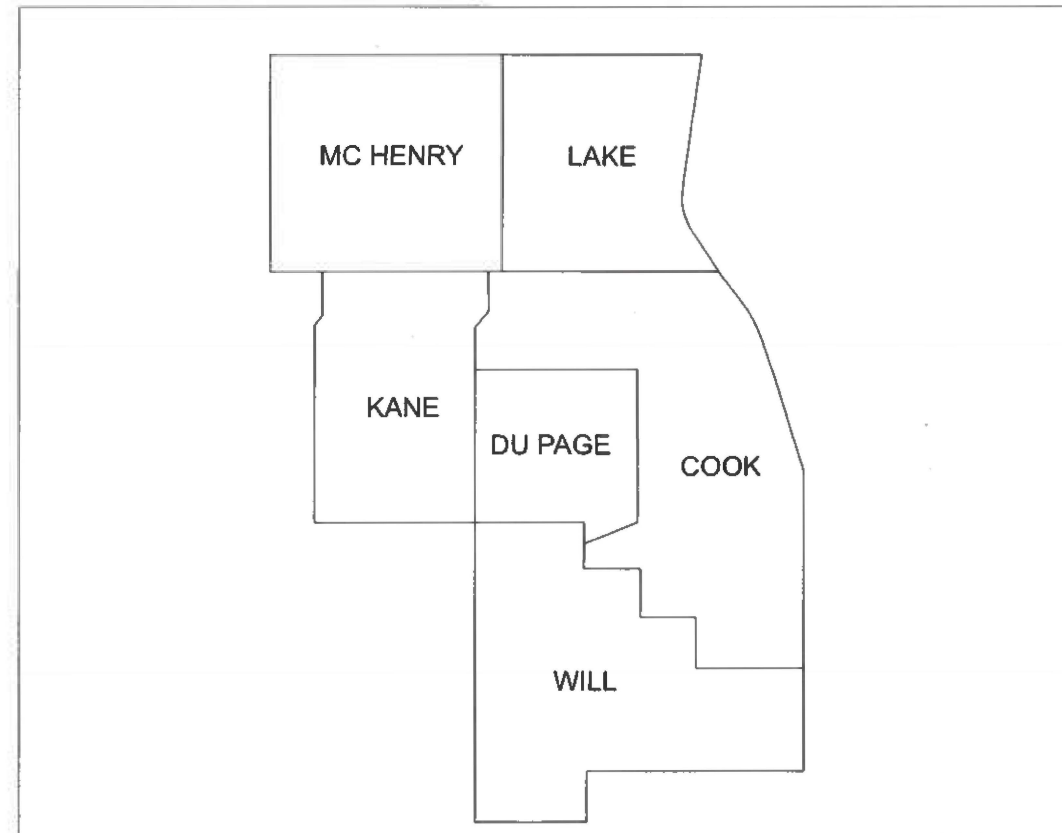
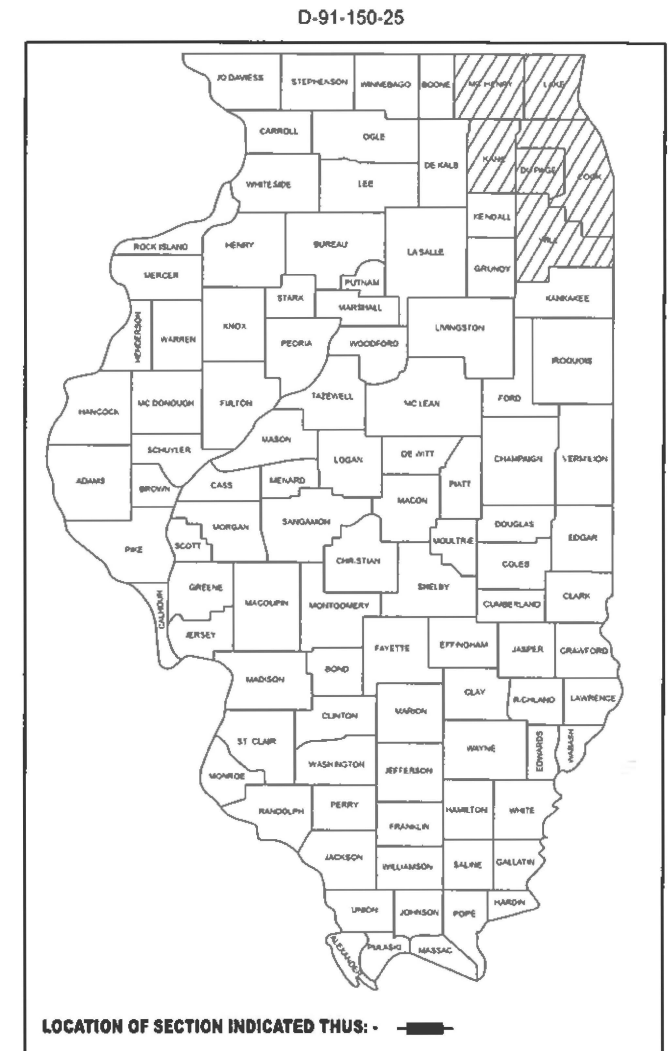
F.A.P. RTE	SECTION	COUNTY	TOTAL SHEETS	SHEET NO.
VAR	2025-1084-ECO,LS	VARIOUS	50	1
		ILLINOIS	CONTRACT NO. 62Y31	

FOR INDEX OF SHEETS, SEE SHEET NO. 2

PROPOSED HIGHWAY PLANS

ROUTE VARIOUS
SECTION: 2025-1084-ECO,LS
PROJECT N/A
LANDSCAPE REPAIR
VARIOUS COUNTY

C-91-227-25



FULL SIZE PLANS HAVE BEEN PREPARED USING STANDARD ENGINEERING SCALES. REDUCED SIZED PLANS WILL NOT CONFORM TO STANDARD SCALES. IN MAKING MEASUREMENTS ON REDUCED PLANS, THE ABOVE SCALES MAY BE USED.

J.U.L.I.E.
JOINT UTILITY LOCATION INFORMATION FOR EXCAVATION
1-800-892-0123
OR 811

PROJECT ENGINEER: MELISSA DEL ROSARIO (847) 705-4391
PROJECT MANAGER: GIOVANNA ZAFFINA

CONTRACT NO. 62Y31

STATE OF ILLINOIS
DEPARTMENT OF TRANSPORTATION

SUBMITTED Jan 23 2026
Joseph Ross, JR
REGIONAL ENGINEER

March 20 2026
Scott E. [Signature]
ENGINEER OF DESIGN AND ENVIRONMENT

March 20 2026
[Signature]
DIRECTOR OF HIGHWAYS PROJECT IMPLEMENTATION

PRINTED BY THE AUTHORITY
OF THE STATE OF ILLINOIS

INDEX OF SHEETS

STATE STANDARDS

GENERAL NOTES

SHEET NO.

DESCRIPTION

STANDARD NO.

DESCRIPTION

1	COVER SHEET
2	INDEX OF SHEETS, HIGHWAY STANDARDS AND GENERAL NOTES
3-4	SUMMARY OF QUANTITIES
5	CALENDAR OF CONSTRUCTION & ESTABLISHMENT WORK
6	WORK ORDER
8-47	LOCATION AND WORK SCHEDULE, SPECIFIC LOCATIONS AND WORK SUMMARIES
48	TRAFFIC CONTROL AND PROTECTION SIDE ROADS, INTERSECTIONS, AND DRIVEWAYS (TC-10)
49-50	TRAFFIC CONTROL DETAIL FOR FREEWAY SHOULDER CLOSURES AND PARTIAL RAMP CLOSURE (TC-17)

701001-02	OFF-ROAD OPERATIONS, 2L, 2W, MORE THAN 15' AWAY
701006-05	OFF-ROAD OPERATIONS, 2L, 2W, 15' TO 24" FROM PAVEMENT
701106-02	OFF-ROAD OPERATIONS, MORE THAN 15' AWAY
701201-05	LANE CLOSURE, 2L, 2W, DAY ONLY, FOR SPEEDS ≥ 45 MPH
701301-04	LANE CLOSURE, 2L, 2W, SHORT TIME OPERATIONS
701311-03	LANE CLOSURE, 2L, 2W, MOVING OPERATIONS - DAY ONLY
701421-08	LANE CLOSURE, MULTILANE, DAY OPERATION ONLY, FOR SPEEDS ≥ 45 MPH TO 55 MPH
701422-10	LANE CLOSURE, MULTILANE, FOR SPEEDS ≥ 45 MPH TO 55 MPH
701427-05	LANE CLOSURE, MULTILANE, INTERMITTENT OR MOVING OPERATIONS, FOR SPEEDS ≤ 40 MPH
701501-06	URBAN LANE CLOSURE, 2L, 2W, UNDIVIDED
701502-09	URBAN LANE CLOSURE, 2L, 2W, BI-DIRECTIONAL LEFT TURN LANE
701601-09	URBAN LANE CLOSURE, MULTILANE, 1W OR 2W WITH NON-TRANVERSABLE MEDIAN
701606-10	URBAN SINGLE LANE CLOSURE, MULTILANE, 2W WITH MOUNTABLE MEDIAN
701611-01	URBAN HALF CLOSURE, MULTILANE, 2W WITH MOUNTABLE MEDIAN
701701-10	URBAN LANE CLOSURE, MULTILANE INTERSECTION
701801-06	SIDEWALK, CORNER OR CROSSWALK CLOSURE
701901-11	TRAFFIC CONTROL DEVICES

1. BEFORE STARTING ANY EXCAVATION, THE CONTRACTOR SHALL CALL "JULIE AT (800) 892-0123 OR 811 FOR FIELD LOCATIONS OF BURIED ELECTRIC, TELEPHONE AND GAS FACILITIES, (48 HOURS NOTIFICATION IS REQUIRED).
2. THE CONTRACTOR WILL NOT BE ALLOWED TO SET UP A YARD OR FIELD OFFICE ON STATE PROPERTY WITHOUT WRITTEN PERMISSION FROM THE DEPARTMENT.
3. IT SHALL BE THE CONTRACTOR'S RESPONSIBILITY TO VERIFY ALL CONDITIONS EXISTING IN THE FIELD PRIOR TO STARTING WORK ORDERS.
4. THE CONTRACTOR SHALL CONTACT DISTRICT ONE TRAFFIC CONTROL SUPERVISOR (847) 705-4470 A MINIMUM OF 72 HOURS IN ADVANCE OF BEGINNING WORK.
5. THE CONTRACTOR SHALL REQUEST AND GAIN APPROVAL FROM THE ILLINOIS DEPARTMENT OF TRANSPORTATION'S EXPRESSWAY TRAFFIC OPERATIONS ENGINEER AT WWW.IDOTLCS.COM TWENTY-FOUR (24) HOURS IN ADVANCE OF DAILY LANE, RAMP AND SHOULDER CLOSURES AND 7 DAYS IN ADVANCE OF ALL PERMANENT AND WEEKEND CLOSURES ON ALL FREEWAYS AND/OR EXPRESSWAYS IN DISTRICT ONE. THIS ADVANCE NOTIFICATION IS CALCULATED BASED ON WORKWEEK OF MONDAY THROUGH FRIDAY AND SHALL NOT INCLUDE WEEKENDS OR HOLIDAYS.
6. THE CONTRACTOR SHALL BE REQUIRED TO PROVIDE ACCESS TO ABUTTING PROPERTY AT ALL TIMES DURING THE CONSTRUCTION OF THIS PROJECT.
7. THE CONTRACTOR SHALL USE CARE IN CONSTRUCTION OPERATIONS NEAR ANY AND ALL EXISTING ITEMS THAT WILL NOT BE REMOVED. ANY DAMAGE DONE TO EXISTING ITEMS BY THE CONTRACTOR SHALL BE REPAIRED AT THE CONTRACTOR'S OWN EXPENSE TO THE SATISFACTION OF THE ENGINEER.
8. THE CONTRACTOR SHALL MAINTAIN PEDESTRIAN ACCESS AT ALL TIMES DURING CONSTRUCTION.
9. DURING CONSTRUCTION OPERATIONS, WHEN ANY LOOSE MATERIAL IS DEPOSITED IN THE FLOW LINE OF DITCHES, GUTTERS, OR DRAINAGE STRUCTURES SO THAT THE NATURAL FLOW OF WATER IS OBSTRUCTED, THE MATERIAL SHALL BE REMOVED AT THE CLOSE OF EACH WORKING DAY. THIS WORK IS CONSIDERED AS PART OF CLEAN-UP.
10. THE CONTRACTOR SHALL ADHERE TO ARTICLE 107.23 OF THE CURRENT IDOT STANDARD SPECIFICATIONS BOOK.
11. WHEN HERBICIDE WORK IS SPECIFIED AND AUTHORIZED, THE CONTRACTOR SHALL HAVE A LICENSED APPLICATOR ON THE WORK SITE TO PERFORM SAID WORK UNDER THE DIRECT SUPERVISION OF THE RESIDENT ENGINEER.
12. DO NOT SCALE PLANS FOR CONSTRUCTION DIMENSIONS.
13. SITE CLEAN-UP SHALL BE PERFORMED ON A DAILY BASIS, SIDEWALKS, PARKING LOTS, ROADWAYS, ETC. SHALL BE KEPT CLEAN AT ALL TIMES.
14. CONTRACTOR'S STAFF SHALL MEET ALL THE REQUIREMENTS AS SPECIFIED IN THE SPECIAL PROVISIONS.
15. CONTRACTOR'S EQUIPMENT SHALL MEET ALL THE REQUIREMENTS AS SPECIFIED IN THE SPECIAL PROVISIONS.
16. THE CONTRACTOR SHALL CONTACT THE IDOT EXPRESSWAY TRAFFIC CONTROL SUPERVISOR DISTRICT ONE CARLOS AT CARLOS.MUNOZ@ILLINOIS.GOV A MINIMUM OF 72 HOURS IN ADVANCE OF BEGINNING OF WORK.

MODEL: GenNotesSh01 [Sheet]
 FILE NAME: c:\pw_wor\k\w\idot\yuyang.deng@illinois.gov\d1194688D115025-shh-gemnote.dgn

	USER NAME = Yuyang.Deng	DESIGNED -	REVISED -	STATE OF ILLINOIS DEPARTMENT OF TRANSPORTATION	INDEX OF SHEETS, HIGHWAY STANDARDS AND GENERAL NOTES	F.A. RTE.	SECTION	COUNTY	TOTAL SHEETS	SHEET NO.	
		DRAWN -	REVISED -			VAR	2025-1084-ECO.LS	VARIOUS	50	2	
	PLOT SCALE = 0.16666633' / in.	CHECKED -	REVISED -			CONTRACT NO. 62Y31					
	PLOT DATE = 2/4/2026	DATE -	REVISED -			ILLINOIS FED. AID PROJECT					
						SCALE:	SHEET OF 1 SHEETS	STA.	TO STA.		

62Y31 - SCHEDULE OF LANDSCAPE CONSTRUCTION AND ESTABLISHMENT WORK

ITEM	2026												2027												2028								
	JUNE	JULY	AUGUST	SEPTEMBER	OCTOBER	NOVEMBER	DECEMBER	JANUARY	FEBRUARY	MARCH	APRIL	MAY	JUNE	JULY	AUGUST	SEPTEMBER	OCTOBER	NOVEMBER	DECEMBER	JANUARY	FEBRUARY	MARCH	APRIL	MAY	JUNE								
Plant Material Inspections	Submit completed plant inspection forms to IDOT by: FALL Planting Season: July 15 SPRING Planting Season: December 15			Submit completed plant inspection sheets to IDOT for FALL 2026 plantings (Initial Installations)			IDOT inspects FALL 2026 plant material at various nurseries			Submit completed plant inspection sheets to IDOT for SPRING 2027 plantings (Initial Installations)			IDOT inspects SPRING 2027 plant material at various nurseries						Submit completed plant inspection sheets to IDOT for FALL 2027 replacement plantings (IF NECESSARY)			Submit completed plant inspection sheets to IDOT for SPRING 2028 Replacement Plantings (IF NECESSARY)			IDOT inspects SPRING 2028 plant material at various nurseries (IF NECESSARY)								
Tree, Shrub, & Vine Plantings	FALL plantings: EVERGREENS: August 15 to October 15 DECIDUOUS: October 1 to November 30			FALL EVERGREEN PLANTINGS (INITIAL INSTALLATION)			FALL DECIDUOUS PLANTINGS (INITIAL INSTALLATION)									PERIOD OF ESTABLISHMENT INSPECTION BY IDOT																	
	SPRING plantings of balled and burlapped: EVERGREENS: March 15 to April 30 DECIDUOUS: March 15 - May 30									SPRING PLANTINGS (INITIAL INSTALLATION)						PERIOD OF ESTABLISHMENT INSPECTION BY IDOT																	
	Period of Establishment Plant Care: Weed & Water - Included in cost of installation of trees, shrubs, & vines)			1	1	1						1	1	1	1	1	1	1															
	Supplemental Watering (WOODY PLANTS)			2	2	2						2	2	2	2	2	2	2							IF NEEDED, AS DIRECTED BY ENGINEER								
	REPLACEMENT PLANTINGS FALL: October 15 to November 30 SPRING: March 15 to May 15															FALL REPLACEMENT PLANTINGS (IF REQUIRED)						SPRING REPLACEMENT PLANTINGS (IF REQUIRED)											
Perennial Plantings	Perennial Plants INSTALLATION SPRING: May 1 to June 15 LATE SUMMER: August 15 to September 15									SPRING PERENNIAL PLANTINGS (INITIAL INSTALLATION)						LATE SUMMER PERENNIAL PLANTINGS (REPLACEMENTS - IF REQUIRED)																	
	Period of Establishment Plant Care: Weed & Water (Included in cost of perennial plant installation)									WEED AND WATER (FOR 30 DAYS AFTER INSTALLATION)						WEED AND WATER REPLACEMENTS (FOR 30 DAYS AFTER INSTALLATION)																	
	Supplemental Watering (PERENNIALS)												PERENNIAL PLANT CARE (AS DIRECTED BY THE ENGINEER)																				
	Perennial Plant Care			PERENNIAL PLANT CARE OF EXISTING PERENNIAL BEDS												SUPPLEMENTAL WATERING OF PERENNIALS (AS DIRECTED BY THE ENGINEER)																	
Turf Restoration	Weed Control, Native Landscape Enhancement SPRING, SUMMER, FALL, & WINTER			AS DIRECTED BY THE ENGINEER																													
	Weed Control, Non-Selective & Non-Residual SPRING, SUMMER, FALL, & WINTER			AS DIRECTED BY THE ENGINEER																													
	Mowing & Mowing Special (ACRE)			AS DIRECTED BY THE ENGINEER												AS DIRECTED BY THE ENGINEER												AS DIRECTED BY THE ENGINEER					
	Seeding, Class 1B & 2A SPRING: April 1 to June 15 FALL: August 1 to November 1 DORMANT: November 2 to November 30			FALL SEEDING			DORMANT SEEDING						SPRING SEEDING						FALL SEEDING						SPRING SEEDING								
	Interseeding, Class 4A (Modified) DORMANT: Nov 1 to March 15						DORMANT SEEDING															DORMANT SEEDING											
	Sodding, Salt Tolerant SPRING: April 1 to June 30 FALL: September 1 to November 30			FALL SODDING									SPRING SODDING						FALL SODDING						SPRING SODDING								

MODEL: Schedule03 (Sheet)
FILE NAME: c:\pwworking\dyuyang.dwg@illinois.gov\1154688D\15025-sht-schedule.dwg

USER NAME = Yuyang.Deng	DESIGNED -	REVISED -
PLOT SCALE = \$SCALE\$	DRAWN -	REVISED -
PLOT DATE = 1/27/2026	CHECKED -	REVISED -
	DATE -	REVISED -

**STATE OF ILLINOIS
DEPARTMENT OF TRANSPORTATION**

CALENDAR OF CONSTRUCTION & ESTABLISHMENT WORK

SCALE: SHEET OF 4 SHEETS STA. TO STA.

F.A. RTE.	SECTION	COUNTY	TOTAL SHEETS	SHEET NO.
VAR	2025-1084-ECO,LS	VARIOUS	50	5
CONTRACT NO. 62Y31				
ILLINOIS FED. AID PROJECT				

DESCRIPTION	SIZE	TOTAL QUANTITIES (THIS SHEET)	LOCATIONS														QUANTITIES (GRAND TOTAL)	
			CENTRAL COOK				SOUTH COOK			DUPAGE				WILL				DISTRICT ONE
			1-90 (JFK) WB (FULTON ST TO LAKE ST) IN CHICAGO	NORTH ORLEANS ST & OHIO ST TRIANGLE IN CHICAGO	IDOT LANDSCAPE MAINTENANCE YARD 1260 AUGUSTA BLVD IN CHICAGO	I-55 AT DUSABLE/LAKE SHORE DRIVE IN CHICAGO	US 45 (CALUMET SAG CHANNEL TO 119TH ST) IN PALOS PARK	I-57 AT SAUK TRAIL IN RICHTON PARK	I-80/I-94 WB AT WENTWORTH AVE IN LANSING	US 20/LAKE ST AT GARY AVE IN KEENEYVILLE	IL 53 AT WOODRIDGE DR ALONG SUMMERALL DR IN WOODRIDGE	IL 83 (I-290 TO IL 38) IN ELMHURST	I-290 AT US 20 IN ELMHURST	159TH ST (RAVINIA AVE TO CRYSTAL CREEK DR) IN HOMER GLEN	US 6 AT MARLEY CREEK IN MOKENA	CENTER ST (MCDONOUGH ST TO HYDE PARK AVE) JOLIET		AS NEEDED
CARPNIUS BETULUS 'FASTIGIATA'	2.5"	0																1
CELTIS OCCIDENTALIS	2"	7			2											5		7
GLEDITSIA TRIACANTHOS VAR INERMIS 'IMPERIAL'	2"	4									4							4
GYMNOCLADUS DIOICUS	2"	4									4							4
QUERCUS BICOLOR	2"	4									4							4
TAXODIUM DISTICHUM	2"	5		5														5
TILIA AMERICANA 'REDMOND'	2"	0																5
30																		
AMELANCHIER X GRANDIFLORA 'AUTUMN BRILLIANCE'	6'	0																3
CERCIS CANADENSIS	6'	0																3
CRATAEGUS PHAENOPYRUM	6'	7	7															7
MALUS 'ADAMS'	2"	0																2
15																		
JUNIPERUS VIRGINIANA	6'	0																2
PINUS FLEXILIS 'VANDERWOLF'S PYRAMID'	6'	17		7											10			17
19																		
AESCULUS PARVIFLORA	#5	3			3													3
ARONIA MELANOCARPA 'MORTON'	#5	19			19													19
FORSYTHIA 'MINDOR'	#3	20			20													20
ILEX VERTICILLATA 'BERRY POPPINS'	#3	0																8
ILEX VERTICILLATA 'FARROWMRP'	#3	0																2
JUNIPERUS PROCUMBENS 'NANA'	#5	12			12													12
PYSOCARPUS OPULIFOLIUS 'DONNA MAY'	#5	17			17													17
RHUS TYPHINA 'BAILTIGER'	#5	0																38
ROSA 'NOALA' (CORAL FLOWER CARPET ROSE)	#3	81	81															81
ROSA 'NOALESA' (YELLOW FLOWER CARPET ROSE)	#3	82	82															82
ROSA 'NOARE' (RED FLOWER CARPET ROSE)	#3	82	82															82
VIBURNUM DENTATUM	#5	0																4
368																		
VIRGINIA CREEPER 'ENGELMANNII'	GAL	60						60										623
623																		
PERENNIAL PLANTS, ORNAMENTAL TYPE, GALLON POT	GAL	0.33			0.33													0.33
PERENNIAL PLANT CARE	SQ YDS	100			100													1350
1350																		
MOWING	ACRE	30.98				2.5	1.5	3.5		2.5		8.52	2	2.26	0.75		7.45	55
MOWING (SPECIAL)	ACRE	5.25								0.5			0.6	1.75			2.4	8
WEED CONTROL, NATIVE LANDSCAPE ENHANCEMENT	ACRE	49.89				4.62	2.9	9.2	0.1	1.5		8.52	4.5	5.7	8.45		4.4	103
WEED CONTROL, NON-SELECTIVE & NON-RESIDUAL	GALLON	25						10					5	5			5	40
TOPSOIL FURNISH AND PLACE, 2"	SQ YD	1000															1000	1000
TOPSOIL FURNISH AND PLACE, 4"	SQ YD	1000															1000	1000
NITROGEN FERTILIZER NUTRIENT	POUND	167			6		59						54				48	245
PHOSPHORUS FERTILIZER NUTRIENT	POUND	167			6		59						54				48	245
POTASSIUM FERTILIZER NUTRIENT	POUND	167			6		59						54				48	245
SEEDING, CLASS 1B	ACRE	0.9					0.65										0.25	245
SEEDING, CLASS 2A	ACRE	1.1											0.6				0.5	0.9
EROSION CONTROL BLANKET (REG)	SQ YD	2420															2420	2420
SODDING, SALT TOLERANT	SQ YD	729			471												258	729
WILDLIFE FRIENDLY EROSION CONTROL BLANKET	SQ YD	6470					3146						2904				420	10100
INTERSEEDING, CLASS 4A (MODIFIED)	ACRE	1.7					1.45										0.25	3.2
SUPPLEMENTAL WATERING	UNIT	98.83	27.93	3.78	45				2.52		3.78					4.28	11.54	115

MODEL: Schedule01 (Sheet)
 FILE NAME: c:\p\work\w\yuyang.dwg@illinois.gov\1184688D\15025-sht-schedule.dwg

USER NAME = Yuyang.Deng	DESIGNED -	REVISED -
PLOT SCALE = 0.16666633 / in.	DRAWN -	REVISED -
PLOT DATE = 1/27/2026	CHECKED -	REVISED -
	DATE -	REVISED -

**STATE OF ILLINOIS
DEPARTMENT OF TRANSPORTATION**

SCHEDULE OF QUANTITIES SOUTH LOCATIONS			
SCALE:	SHEET	OF 4 SHEETS	STA. TO STA.

F.A. RTE.	SECTION	COUNTY	TOTAL SHEETS	SHEET NO.
VAR	2025-1084-ECO,LS	VARIOUS	50	8
CONTRACT NO. 62Y31			ILLINOIS FED. AID PROJECT	



IL 31 BYPASS (IL 62 TO N. MAIN ST) IN ALGONQUIN

Legend

- - - Fence
- Guardrail
- NAW
- Wall_Conc_Barrier
- Wall_other
- Management units
- Restrictionsfor TESpecies
- RestrictionsforINAINPSites

Treatment areas and pay items will be specified on Work orders



MODEL: 23 (Sheet)
FILE NAME: c:\p\work\paw\byyang.deng@illinois.gov\1184688D\118025-sht-landsdp.dgn

USER NAME = Yuyang.Deng	DESIGNED -	REVISED -
	DRAWN -	REVISED -
	CHECKED -	REVISED -
PLOT DATE = 1/27/2026	DATE -	REVISED -

**STATE OF ILLINOIS
DEPARTMENT OF TRANSPORTATION**

**IL 31 BYPASS (IL 62 TO N. MAIN ST.)
ALGONQUIN**

SCALE: SHEET 9 OF 40 SHEETS STA. 0+00.00 TO STA. 0+00.00

F.A. RTE.	SECTION	COUNTY	TOTAL SHEETS	SHEET NO.
VAR	2025-1084-ECO,LS	VARIOUS	50	9
CONTRACT NO. 62Y31				
ILLINOIS FED. AID PROJECT				



IL 47 AND KISHWAUKEE RIVER IN WOODSTOCK

Legend

- Fence
- Wall_Conc_Barrier
- RestrictionsforTESpecies
- Guardrail
- Wall_other
- RestrictionsforINAINPSites
- NAW
- ▨ Managment units

Treatment areas and pay items will be specified on Work orders



MODEL: 24 (Sheet)
FILE NAME: c:\p\work\pawf\yuyang.deng@illinois.gov\1154688D\115025-sht-landsdp.dgn

USER NAME = Yuyang.Deng	DESIGNED -	REVISED -
	DRAWN -	REVISED -
	CHECKED -	REVISED -
PLOT DATE = 1/27/2026	DATE -	REVISED -

**STATE OF ILLINOIS
DEPARTMENT OF TRANSPORTATION**

**IL 47 AND KISHWAUKEE RIVER
WOODSTOCK**

SCALE: SHEET 10 OF 40 SHEETS STA. TO STA.

F.A. RTE.	SECTION	COUNTY	TOTAL SHEETS	SHEET NO.
VAR	2025-1084-ECO,LS	VARIOUS	50	10
CONTRACT NO. 62Y31				
ILLINOIS FED. AID PROJECT				



IL-83 & IL-137, GRAYSLAKE, IL 60030

MODEL: 19 (Sheet)
 FILE NAME: c:\p\work\paw\byyang.deng@illinois.gov\1184688D\118025-sht-landscep.dgn

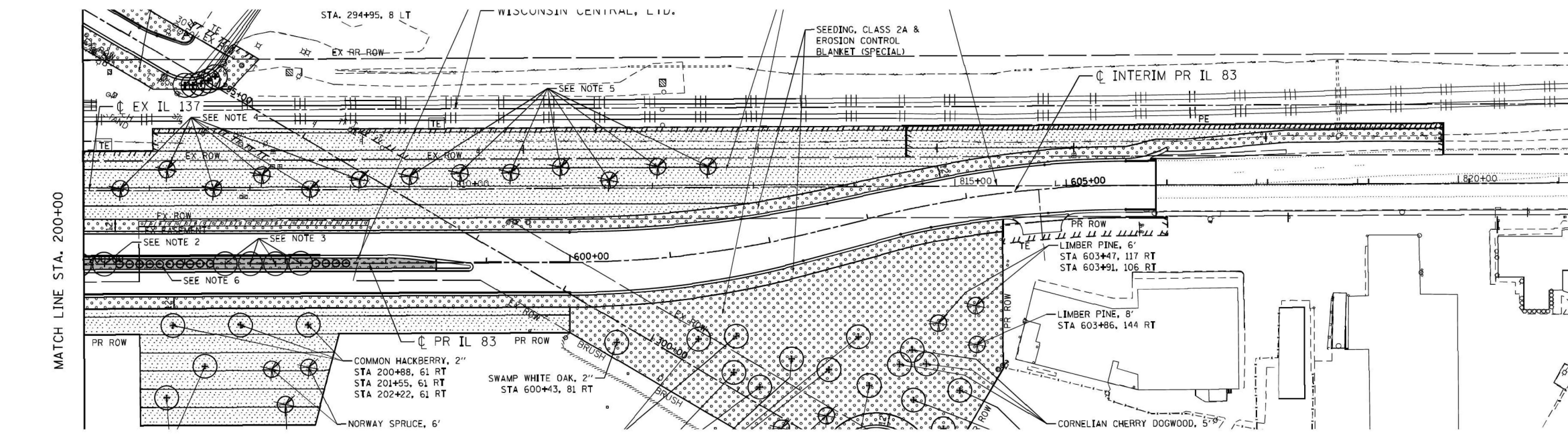
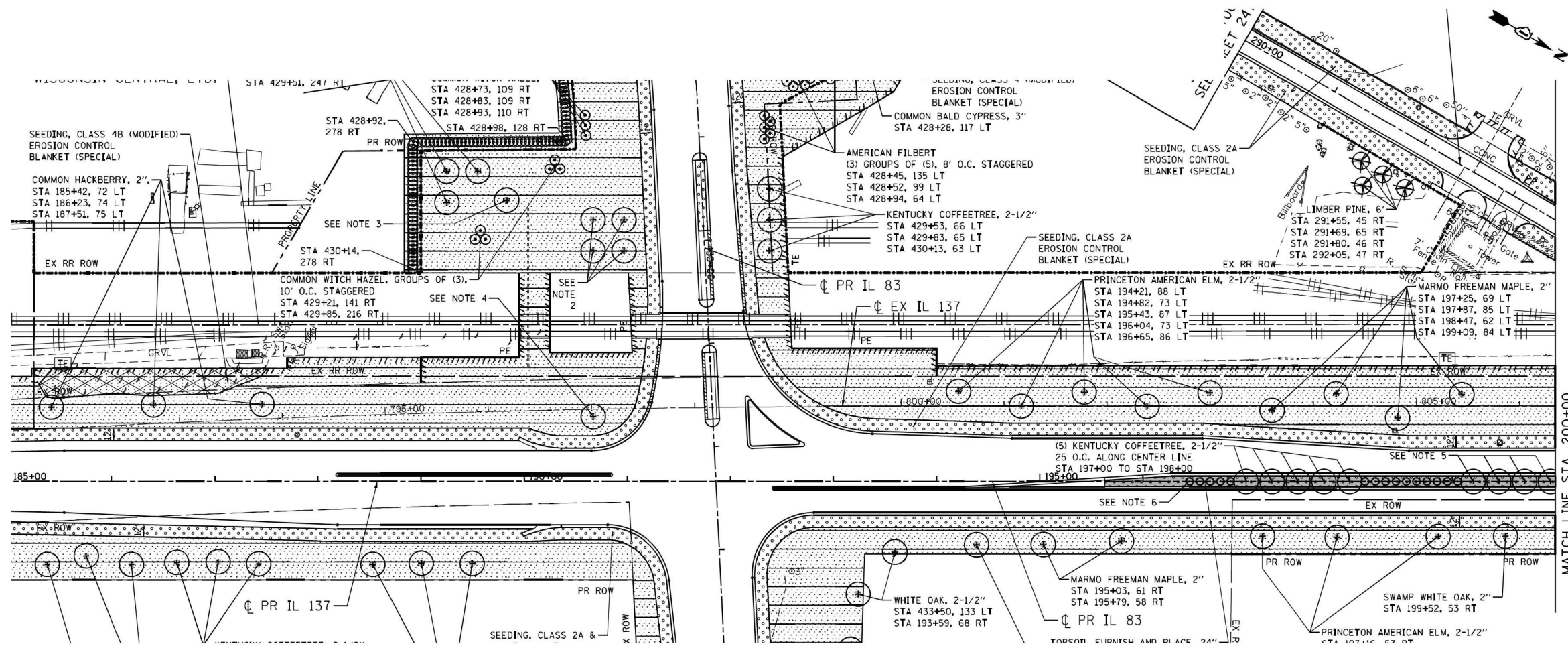
USER NAME = Yuyang.Deng	DESIGNED -	REVISED -
	DRAWN -	REVISED -
	CHECKED -	REVISED -
PLOT DATE = 1/27/2026	DATE -	REVISED -

STATE OF ILLINOIS
 DEPARTMENT OF TRANSPORTATION

IL 83 AND IL 137
 GRAYSLAKE

SCALE: SHEET 11 OF 40 SHEETS STA. TO STA.

F.A. RTE.	SECTION	COUNTY	TOTAL SHEETS	SHEET NO.
VAR	2025-1084-ECO,LS	VARIOUS	50	11
CONTRACT NO. 62Y31				
ILLINOIS FED. AID PROJECT				



NOTE: PERENNIAL PLANT CARE SHALL BE DONE AT TWO LOCATIONS: IL 83 AT RR (ONE MEDIAN) AND IL 137 (ONE MEDIAN WEST OF IL 83).

MODEL: 20 (Sheet)
FILE NAME: c:\pwworking\yuyang.deng@illinois.gov\d1184688D\15025-shl-landscp.dgn

USER NAME = Yuyang.Deng	DESIGNED -	REVISED -
	DRAWN -	REVISED -
	CHECKED -	REVISED -
PLOT DATE = 1/27/2026	DATE -	REVISED -

**STATE OF ILLINOIS
DEPARTMENT OF TRANSPORTATION**

**IL 83 AT IL 137
MEDIANS**

SCALE: SHEET 12 OF 40 SHEETS STA. TO STA.

F.A. RTE.	SECTION	COUNTY	TOTAL SHEETS	SHEET NO.
VAR	2025-1084-ECO,LS	VARIOUS	50	12
CONTRACT NO. 62Y31				
ILLINOIS FED. AID PROJECT				



US 41 AT KENNEDY RD IN LAKE FOREST

Legend

- - - - Fence
- Guardrail
- NAW
- ▨ Wall_Conc_Barrier
- Wall_other
- ▨ Managment units
- Restrictionsfor TESpecies
- RestrictionsforINAINPSites

Treatment areas and pay items will be specified on Work orders



MODEL: 25 (Sheet)
FILE NAME: c:\p\work\paw\yuyang.deng@illinois.gov\1154688D\115025-sht-landsdp.dgn

USER NAME = Yuyang.Deng	DESIGNED -	REVISED -
	DRAWN -	REVISED -
	CHECKED -	REVISED -
PLOT DATE = 1/27/2026	DATE -	REVISED -

**STATE OF ILLINOIS
DEPARTMENT OF TRANSPORTATION**

**US 41 AT KENNEDY ROAD
LAKE FOREST**

SCALE: SHEET 13 OF 40 SHEETS STA. TO STA.

F.A. RTE.	SECTION	COUNTY	TOTAL SHEETS	SHEET NO.
VAR	2025-1084-ECO.LS	VARIOUS	50	13
			CONTRACT NO. 62Y31	
		ILLINOIS	FED. AID PROJECT	



US 45 & MILBURN RD IN OLD MILL CREEK 1 of 2

Legend

- - - - Fence
- Guardrail
- NAW
- Wall_Conc_Barrier
- Wall_other
- Management units
- RestrictionsforTESpecies
- RestrictionsforINAINPSites

Treatment areas and pay items will be specified on Work orders



MODEL: 26 (Sheet)
FILE NAME: c:\p\work\paw\byyang.deng@illinois.gov\1184688D\118025-sht-landscep.dgn

USER NAME = Yuyang.Deng	DESIGNED -	REVISED -
	DRAWN -	REVISED -
	CHECKED -	REVISED -
PLOT DATE = 1/27/2026	DATE -	REVISED -

**STATE OF ILLINOIS
DEPARTMENT OF TRANSPORTATION**

**US 45 AND MILBURN ROAD
OLD MILL CREEK**

SCALE: SHEET 14 OF 40 SHEETS STA. TO STA.

F.A. RTE.	SECTION	COUNTY	TOTAL SHEETS	SHEET NO.
VAR	2025-1084-ECO,LS	VARIOUS	50	14
CONTRACT NO. 62Y31				
ILLINOIS FED. AID PROJECT				



Sources: Esri, TomTom, Garmin, FAO, NOAA, USGS, © OpenStreetMap contributors, and the GIS User Community

Microsoft, Vantor, Sources: Esri, TomTom, Garmin, FAO, NOAA, USGS, © OpenStreetMap contributors, and the GIS User Community

US 45 & MILBURN RD IN OLD MILL CREEK 2 of 2

Legend

- Fence
- Wall_Conc_Barrier
- █ Restrictionsfor TESpecies
- Guardrail
- Wall_other
- █ RestrictionsforINAINPSites
- NAW
- ▨ Managment units

Treatment areas and pay items will be specified on Work orders



MODEL: 27 (Sheet)
FILE NAME: c:\pw\work\paw\byyang.deng@illinois.gov\1184688D\11825-shr-lansdcp.dgn

USER NAME = Yuyang.Deng	DESIGNED -	REVISED -
	DRAWN -	REVISED -
	CHECKED -	REVISED -
PLOT DATE = 1/27/2026	DATE -	REVISED -

**STATE OF ILLINOIS
DEPARTMENT OF TRANSPORTATION**

**US 45 AND MILBURN ROAD
OLD MILL CREEK**

SCALE: SHEET 15 OF 40 SHEETS STA. TO STA.

F.A. RTE.	SECTION	COUNTY	TOTAL SHEETS	SHEET NO.
VAR	2025-1084-ECO,LS	VARIOUS	50	15
CONTRACT NO. 62Y31				
ILLINOIS FED. AID PROJECT				



IL 312 & SAND LAKE RD IN LINDENHURST

Legend

- Fence
- Wall_Conc_Barrier
- Restrictionsfor TESpecies
- Guardrail
- Wall_other
- RestrictionsforINAINPSites
- NAW
- Managment units

Treatment areas and pay items will be specified on Work orders

Date Exported: 1/22/2026 1:48 PM



MODEL: 20 (Sheet)
FILE NAME: c:\p\work\paw\byyang.deng@illinois.gov\1154688D\115025-sht-landsdp.dgn

USER NAME = Yuyang.Deng	DESIGNED -	REVISED -
	DRAWN -	REVISED -
	CHECKED -	REVISED -
PLOT DATE = 1/27/2026	DATE -	REVISED -

**STATE OF ILLINOIS
DEPARTMENT OF TRANSPORTATION**

**IL 132 & SAND LAKE ROAD
LINDENHURST**

SCALE: SHEET 16 OF 40 SHEETS STA. TO STA.

F.A. RTE.	SECTION	COUNTY	TOTAL SHEETS	SHEET NO.
VAR	2025-1084-ECO,LS	VARIOUS	50	16
ILLINOIS FED. AID PROJECT			CONTRACT NO. 62Y31	



816 - 818 WOODBINE CIRCLE, LAKE ZURICH, IL 60047

Note: Landscape location is directly behind 816 to 818 Woodbine Circle along US 12/Rand Road.

MODEL: 1 (Sheet)
FILE NAME: c:\p\work\paw\byyang.deng@illinois.gov\1154688D\115025-sht-landscape.dgn

USER NAME = Yuyang.Deng	DESIGNED -	REVISED -
	DRAWN -	REVISED -
	CHECKED -	REVISED -
PLOT DATE = 1/27/2026	DATE -	REVISED -

**STATE OF ILLINOIS
DEPARTMENT OF TRANSPORTATION**

**US 12 / RAND RD (150' SOUTH OF CUBA RD)
LAKE ZURICH**

SCALE: SHEET 17 OF 40 SHEETS STA. TO STA.

F.A. RTE.	SECTION	COUNTY	TOTAL SHEETS	SHEET NO.
VAR	2025-1084-ECO,LS	VARIOUS	50	17
CONTRACT NO. 62Y31				
ILLINOIS FED. AID PROJECT				



PLANT LIST						
KEY	QTY	SCIENTIFIC NAME	COMMON NAME	SIZE	SPACING	COMMENTS
ORNAMENTAL TREE						
AG	3	Amelanchier x grandiflora 'Autumn Brilliance'	Autumn Brilliance Serviceberry	6' h, multi-stem	on plan	
CC	3	Cercis canadensis	Eastern Redbud	6' h, multi-stem	on plan	
MA	2	Malus 'Adams'	Adams Crabapple	2" cal.	on plan	
SHRUB						
IV	10	Ilex verticillata 'FarrowMrP'	Mr. Poppins Winterberry Holly	#3	4' o.c.	
RT	8	Rhus typhina 'Bailtiger'	Tiger Eyes Sumac	#5	8' o.c.	
VD	4	Viburnum dentatum	Arrowwood Viburnum	#5	10' o.c.	

NOTES:
 1. THE CONTRACTOR SHALL NOTIFY THE ROADSIDE DEVELOPMENT UNIT AT 847-705-4171 AT LEAST 48 HOURS PRIOR TO PLANTING FOR LAYOUT.

MODEL: 2 [Sheet]
 FILE NAME: c:\pwworking\pwworking.dwg
 USER: yuyang.deng
 DATE: 1/27/2026

USER NAME = Yuyang.Deng	DESIGNED -	REVISED -
	DRAWN -	REVISED -
	CHECKED -	REVISED -
PLOT DATE = 1/27/2026	DATE -	REVISED -

STATE OF ILLINOIS
DEPARTMENT OF TRANSPORTATION

US 12 / RAND RD (150' S/O CUBA RD.)
PLANTING PLAN

SCALE: SHEET 18 OF 40 SHEETS STA. TO STA.

F.A. RTE.	SECTION	COUNTY	TOTAL SHEETS	SHEET NO.
VAR	2025-1084-ECO,LS	VARIOUS	50	18
CONTRACT NO. 62Y31				
ILLINOIS FED. AID PROJECT				



US 41 (DUNDEE RD TO CENTRAL AVE)

- Legend**
- Fence
 - Wall_Conc_Barrier
 - RestrictionsforTESpecies
 - Guardrail
 - Wall_other
 - RestrictionsforINAINPSites
 - NAW
 - ▨ Managment units

Treatment areas and pay items will be specified on Work orders



MODEL: 30 (Sheet)
FILE NAME: c:\p\work\paw\byyang.deng@illinois.gov\1154688D\115025-sht-landscp.dgn

USER NAME = Yuyang.Deng	DESIGNED -	REVISED -
	DRAWN -	REVISED -
	CHECKED -	REVISED -
PLOT DATE = 1/27/2026	DATE -	REVISED -

**STATE OF ILLINOIS
DEPARTMENT OF TRANSPORTATION**

**US 41 (DUNDEE RD TO CENTRAL AVE)
NORTHBROOK & HIGHLAND PARK**

SCALE: SHEET 19 OF 40 SHEETS STA. TO STA.

F.A. RTE.	SECTION	COUNTY	TOTAL SHEETS	SHEET NO.
VAR	2025-1084-ECO,LS	VARIOUS	50	19
CONTRACT NO. 62Y31				
ILLINOIS FED. AID PROJECT				



NW CORNER OF US 14 & N COOLIDGE AVE, PALATINE, IL 60067

MODEL: 9 [Sheet]
 FILE NAME: c:\p\work\palatinyuyang.deng@illinois.gov\1154688D\115025-sht-landscp.dgn

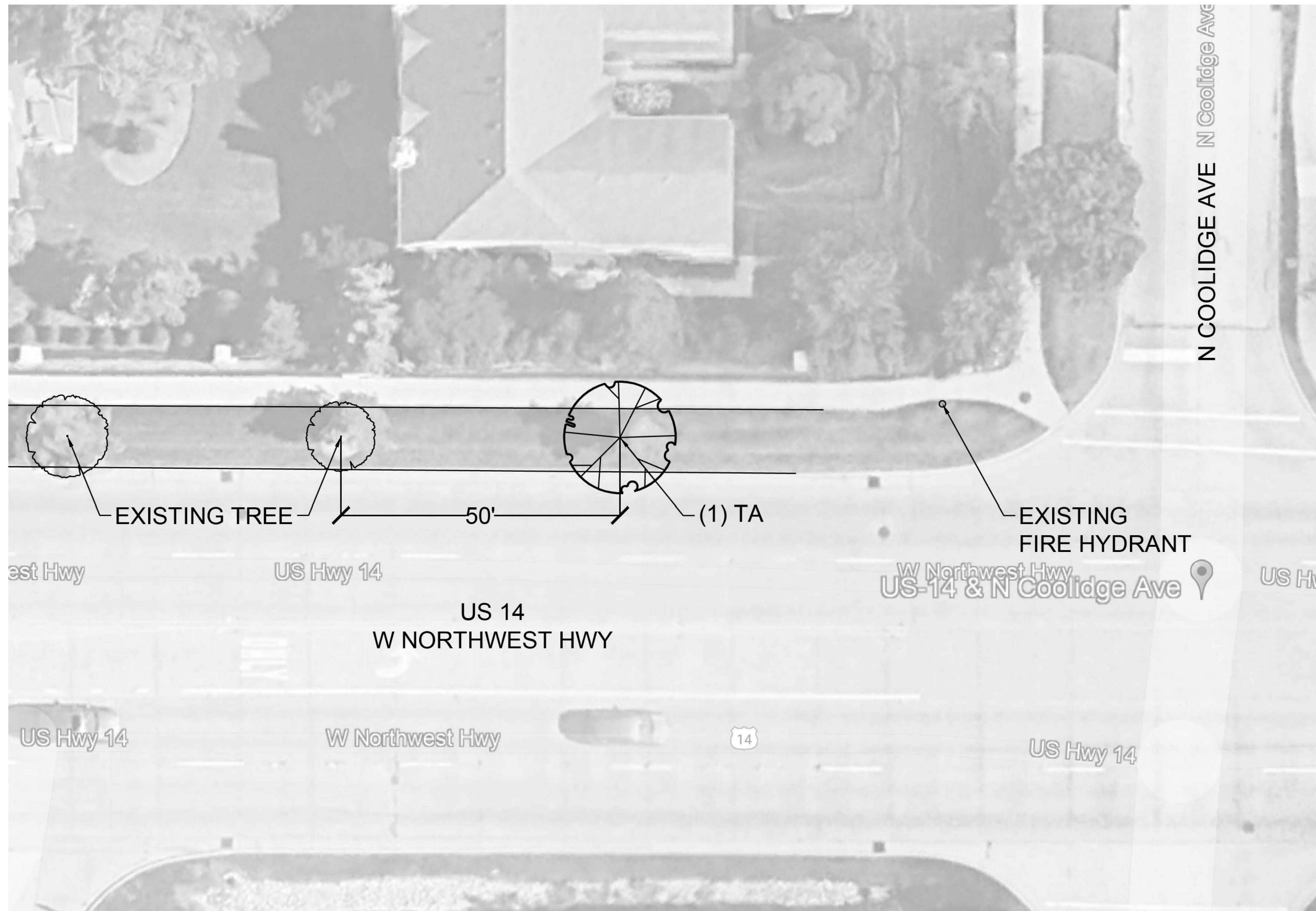
USER NAME = Yuyang.Deng	DESIGNED -	REVISED -
	DRAWN -	REVISED -
	CHECKED -	REVISED -
PLOT DATE = 1/27/2026	DATE -	REVISED -

STATE OF ILLINOIS
 DEPARTMENT OF TRANSPORTATION

US 14 & N COOLIDGE AVE
 PALATINE

SCALE: SHEET 20 OF 40 SHEETS STA. TO STA.

F.A. RTE.	SECTION	COUNTY	TOTAL SHEETS	SHEET NO.
VAR	2025-1084-ECO,LS	VARIOUS	50	20
CONTRACT NO. 62Y31				
ILLINOIS FED. AID PROJECT				



PLANT LIST						
KEY	QTY	SCIENTIFIC NAME	COMMON NAME	SIZE	SPACING	COMMENTS
DECIDUOUS TREE						
TA	1	Tilia americana 'Redmond'	Redmond American Linden	2" Cal	on plan	

NOTE:

1. THE CONTRACTOR SHALL NOTIFY THE ROADSIDE DEVELOPMENT UNIT AT 847-705-4171 AT LEAST 48 HOURS PRIOR TO PLANTING FOR LAYOUT.

MODEL: 10 (Sheet)
FILE NAME: c:\pw\work\paw\yuyang.deng@illinois.gov\d1184688D\15025-sht-landscp.dgn

USER NAME = Yuyang.Deng	DESIGNED -	REVISED -
	DRAWN -	REVISED -
	CHECKED -	REVISED -
PLOT DATE = 1/27/2026	DATE -	REVISED -

**STATE OF ILLINOIS
DEPARTMENT OF TRANSPORTATION**

**US 14 & COOLIDGE AVE.
PLANTING PLAN**

SCALE: SHEET 21 OF 40 SHEETS STA. TO STA.

F.A. RTE.	SECTION	COUNTY	TOTAL SHEETS	SHEET NO.
VAR	2025-1084-ECO,LS	VARIOUS	50	21
CONTRACT NO. 62Y31				
ILLINOIS FED. AID PROJECT				



E PALATINE RD & BARRINGTON RD, BARRINGTON HILLS, IL 60010

MODEL: 13 (Sheet)
 FILE NAME: c:\pw\work\paw\yuyang.deng@illinois.gov\1154688D\115025-sht-landscp.dgn

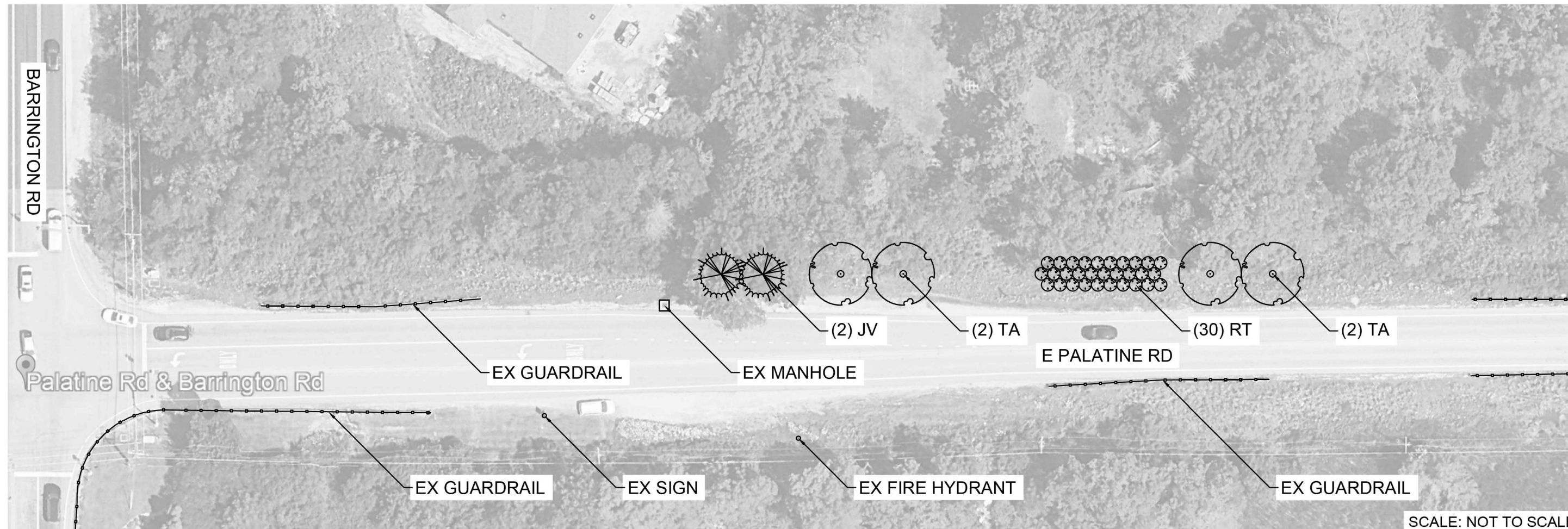
USER NAME = Yuyang.Deng	DESIGNED -	REVISED -
	DRAWN -	REVISED -
	CHECKED -	REVISED -
PLOT DATE = 1/27/2026	DATE -	REVISED -

**STATE OF ILLINOIS
 DEPARTMENT OF TRANSPORTATION**

**PALATINE RD EAST OF BARRINGTON RD
 BARRINGTON HILLS**

SCALE: SHEET 22 OF 40 SHEETS STA. TO STA.

F.A. RTE.	SECTION	COUNTY	TOTAL SHEETS	SHEET NO.
VAR	2025-1084-ECO,LS	VARIOUS	50	22
CONTRACT NO. 62Y31				
ILLINOIS FED. AID PROJECT				



PLANT LIST						
KEY	QTY	SCIENTIFIC NAME	COMMON NAME	SIZE	SPACING	COMMENTS
DECIDUOUS TREE						
TA	4	Tilia americana 'Redmond'	Redmond Linden	2" cal	30' o.c.	
EVERGREEN TREE						
JV	2	Juniperus virginiana	Eastern Red Cedar	6' h	20' o.c.	
SHRUB						
RT	30	Rhus typhina 'Bailtiger'	Tiger Eyes Sumac	#5	6' o.c.	

NOTE:

1. THE LOCATIONS OF PROPOSED PLANTING MATERIALS ARE APPROXIMATE. THE CONTRACTOR SHALL NOTIFY THE ROADSIDE DEVELOPMENT UNIT AT 847-705-4171 AT LEAST 48 HOURS PRIOR TO PLANTING FOR LAYOUT.

MODEL: 14 (Sheet)
 FILE NAME: c:\p\work\palatinyang.deng@illinois.gov\1184688D\15025-srh-lansdscp.dgn

USER NAME = Yuyang.Deng	DESIGNED -	REVISED -
	DRAWN -	REVISED -
	CHECKED -	REVISED -
PLOT DATE = 1/27/2026	DATE -	REVISED -

STATE OF ILLINOIS
DEPARTMENT OF TRANSPORTATION

PALATINE RD EAST OF BARRINGTON RD
PLANTING PLAN

SCALE: SHEET 23 OF 40 SHEETS STA. TO STA.

F.A. RTE.	SECTION	COUNTY	TOTAL SHEETS	SHEET NO.
VAR	2025-1084-ECO,LS	VARIOUS	50	23
			CONTRACT NO. 62Y31	
ILLINOIS FED. AID PROJECT				



1200 HIGHLAND BLVD, HOFFMAN ESTATES, IL 60169

MODEL: 11 (Sheet)
FILE NAME: c:\p\work\pawfob\yuyang.deng@illinois.gov\1154688D\115025-sht-landscp.dgn

USER NAME = Yuyang.Deng	DESIGNED -	REVISED -
	DRAWN -	REVISED -
	CHECKED -	REVISED -
PLOT DATE = 1/27/2026	DATE -	REVISED -

STATE OF ILLINOIS
DEPARTMENT OF TRANSPORTATION

GOLF RD AND HIGHLAND BLVD
HOFFMAN ESTATES

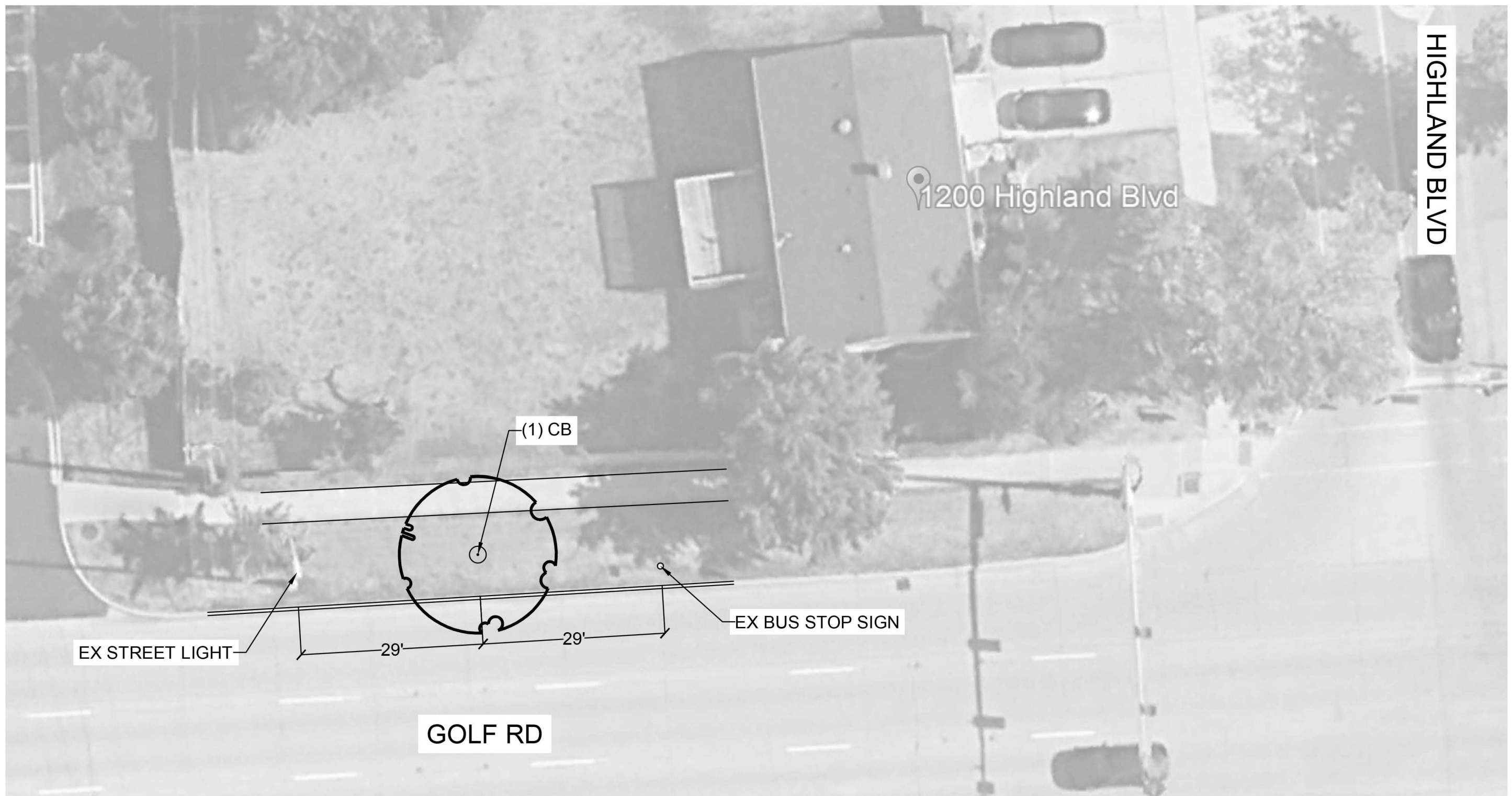
SCALE: SHEET 24 OF 40 SHEETS STA. TO STA.

F.A. RTE.	SECTION	COUNTY	TOTAL SHEETS	SHEET NO.
VAR	2025-1084-ECO,LS	VARIOUS	50	24
CONTRACT NO. 62Y31				
ILLINOIS FED. AID PROJECT				



HIGHLAND BLVD

1200 Highland Blvd



PLANT LIST						
KEY	QTY	SCIENTIFIC NAME	COMMON NAME	SIZE	SPACING	COMMENTS
DECIDUOUS TREE						
CB	1	Carpinus betulus 'Fastigiata'	Pyramidal European Hornbeam	2.5" Cal	on plan	

NOTE:
 1. THE CONTRACTOR SHALL NOTIFY THE ROADSIDE DEVELOPMENT UNIT AT 847-705-4171 AT LEAST 48 HOURS PRIOR TO PLANTING FOR LAYOUT.

MODEL: 12 (Sheet)
 FILE NAME: c:\p\work\paw\yuyang.deng@illinois.gov\1184688D\15025-sht-landscp.dgn

USER NAME = Yuyang.Deng	DESIGNED -	REVISED -
	DRAWN -	REVISED -
	CHECKED -	REVISED -
PLOT DATE = 1/27/2026	DATE -	REVISED -

STATE OF ILLINOIS
 DEPARTMENT OF TRANSPORTATION

GOLF RD. AND HIGHLAND BLVD.
 PLANTING PLAN

SCALE: SHEET 25 OF 40 SHEETS STA. TO STA.

F.A. RTE.	SECTION	COUNTY	TOTAL SHEETS	SHEET NO.
VAR	2025-1084-ECO,LS	VARIOUS	50	25
CONTRACT NO. 62Y31				
ILLINOIS FED. AID PROJECT				



I-90 AT CUMBERLAND AVE IN CHICAGO

- Legend**
- Fence
 - Wall_Conc_Barrier
 - Restrictionsfor TESpecies
 - Guardrail
 - Wall_other
 - RestrictionsforINAINPSites
 - NAW
 - ▨ Managment units

Treatment areas and pay items will be specified on Work orders



MODEL: 31 (Sheet)
FILE NAME: c:\p\work\paw\yuyang.deng@illinois.gov\1154688D\115025-sht-landsdp.dgn

USER NAME = Yuyang.Deng	DESIGNED -	REVISED -
	DRAWN -	REVISED -
	CHECKED -	REVISED -
PLOT DATE = 1/27/2026	DATE -	REVISED -

**STATE OF ILLINOIS
DEPARTMENT OF TRANSPORTATION**

**I-90 AT CUMBERLAND AVE.
CHICAGO**

SCALE: SHEET 26 OF 40 SHEETS STA. TO STA.

F.A. RTE.	SECTION	COUNTY	TOTAL SHEETS	SHEET NO.
VAR	2025-1084-ECO,LS	VARIOUS	50	26
CONTRACT NO. 62Y31				
ILLINOIS FED. AID PROJECT				



IL 59 & US 20 IN BARTLETT

Legend

- Fence
- Guardrail
- NAW
- Wall_Conc_Barrier
- Wall_other
- ▨ Managment units
- RestrictionsforTESpecies
- ▨ RestrictionsforINAINPSites

Treatment areas and pay items will be specified on Work orders

Date Exported: 1/22/2026 1:57 PM



MODEL: 32 (Sheet)
FILE NAME: c:\p\work\paw\yuyang.deng@illinois.gov\1154688D\115025-sht-handssp.dgn

USER NAME = Yuyang.Deng	DESIGNED -	REVISED -
	DRAWN -	REVISED -
	CHECKED -	REVISED -
PLOT DATE = 1/27/2026	DATE -	REVISED -

**STATE OF ILLINOIS
DEPARTMENT OF TRANSPORTATION**

**IL 59 AND US 20
BARTLETT**

SCALE: SHEET 27 OF 40 SHEETS STA. TO STA.

F.A. RTE.	SECTION	COUNTY	TOTAL SHEETS	SHEET NO.
VAR	2025-1084-ECO,LS	VARIOUS	50	27
CONTRACT NO. 62Y31				
ILLINOIS FED. AID PROJECT				



E OF I-90, BETWEEN W FULTON ST AND W LAKE ST, CHICAGO, IL 60661

MODEL: 7 [Sheet]
 FILE NAME: c:\p\work\paw\byyang.deng@illinois.gov\115025-sht-landscp.dgn

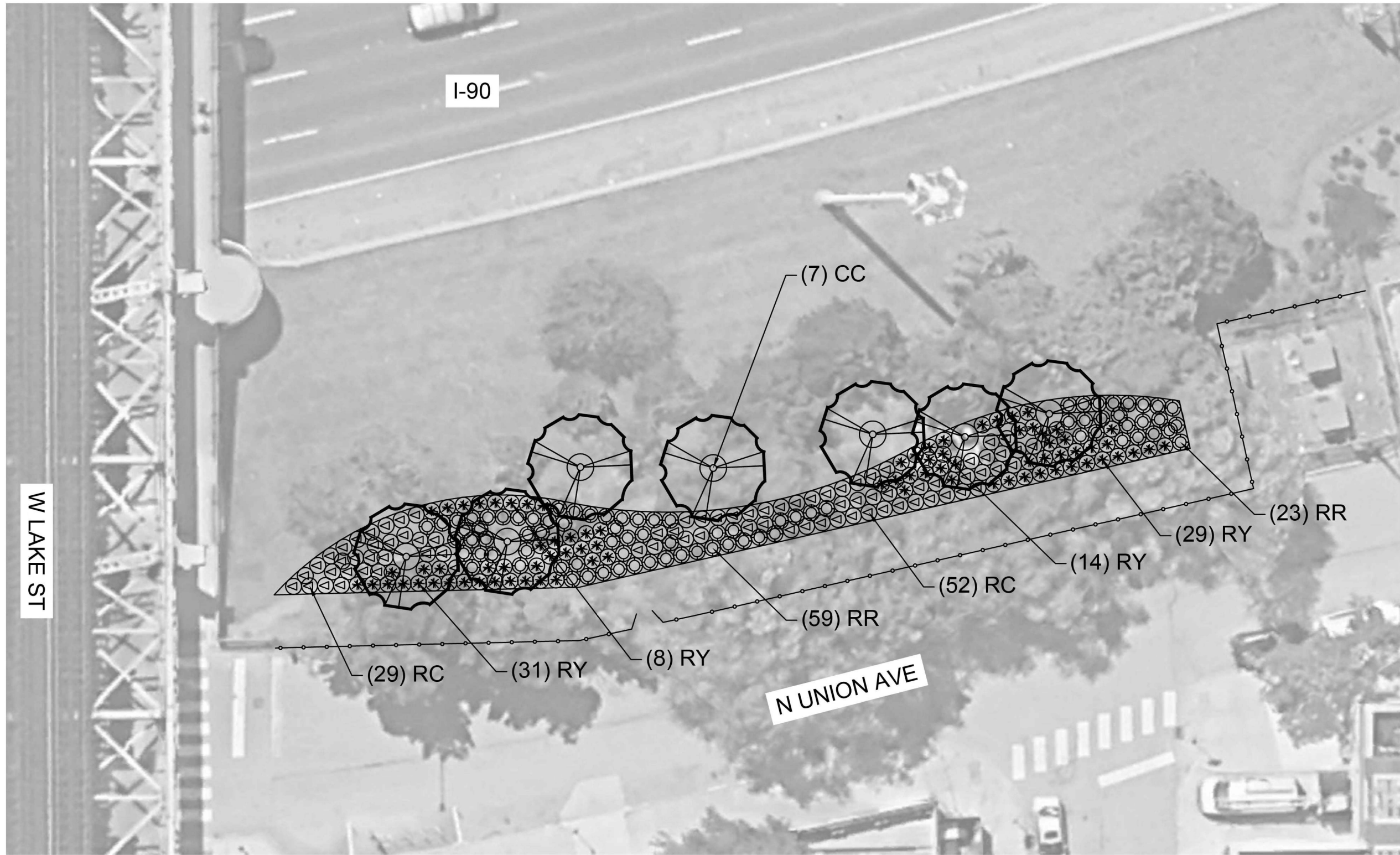
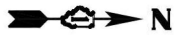
USER NAME = Yuyang.Deng	DESIGNED -	REVISED -
	DRAWN -	REVISED -
	CHECKED -	REVISED -
PLOT DATE = 1/27/2026	DATE -	REVISED -

STATE OF ILLINOIS
 DEPARTMENT OF TRANSPORTATION

I-90 W: BETWEEN FULTON ST AND LAKE ST
 CHICAGO

SCALE: SHEET 28 OF 40 SHEETS STA. TO STA.

F.A. RTE.	SECTION	COUNTY	TOTAL SHEETS	SHEET NO.
VAR	2025-1084-ECO,LS	VARIOUS	50	28
CONTRACT NO. 62Y31				
ILLINOIS FED. AID PROJECT				



PLANT LIST						
KEY	QTY	SCIENTIFIC NAME	COMMON NAME	SIZE	SPACING	COMMENTS
ORNAMENTAL TREE						
CC	7	Crataegus crus-galli	Cockspur Hawthorn	6' h. Multi-stem	on plan	
SHRUB						
⊙ RC	81	Rosa 'Noala'	Coral Flower Carpet Rose	#3	36" o.c.	
⊗ RY	82	Rosa 'Noalesa'	Yellow Flower Carpet Rose	#3	36" o.c.	
⊙ RR	82	Rosa 'Noare'	Red Flower Carpet Rose	#3	36" o.c.	

NOTE:
 1. THE CONTRACTOR SHALL NOTIFY THE ROADSIDE DEVELOPMENT UNIT AT 847-705-4171 AT LEAST 48 HOURS PRIOR TO PLANTING FOR LAYOUT.

MODEL: 8 (Sheet)
 FILE NAME: c:\pwworking\yuyang.deng@illinois.gov\d1184688D\15025-sht-landscp.dgn

USER NAME = Yuyang.Deng	DESIGNED -	REVISED -
	DRAWN -	REVISED -
	CHECKED -	REVISED -
PLOT DATE = 1/27/2026	DATE -	REVISED -

STATE OF ILLINOIS
 DEPARTMENT OF TRANSPORTATION

I-90 W: BETWEEN FULTON ST TO LAKE ST
 PLANTING PLAN
 SCALE: SHEET 29 OF 40 SHEETS STA. TO STA.

F.A. RTE.	SECTION	COUNTY	TOTAL SHEETS	SHEET NO.
VAR	2025-1084-ECO,LS	VARIOUS	50	29
CONTRACT NO. 62Y31				
ILLINOIS FED. AID PROJECT				



NORTH ORLEANS TRIANGLE

541 W OHIO ST, CHICAGO, IL 60654

MODEL: 5 (Sheet)
FILE NAME: c:\p\work\pow\byyang.deng@illinois.gov\1154688D\115025-sht-landscp.dgn

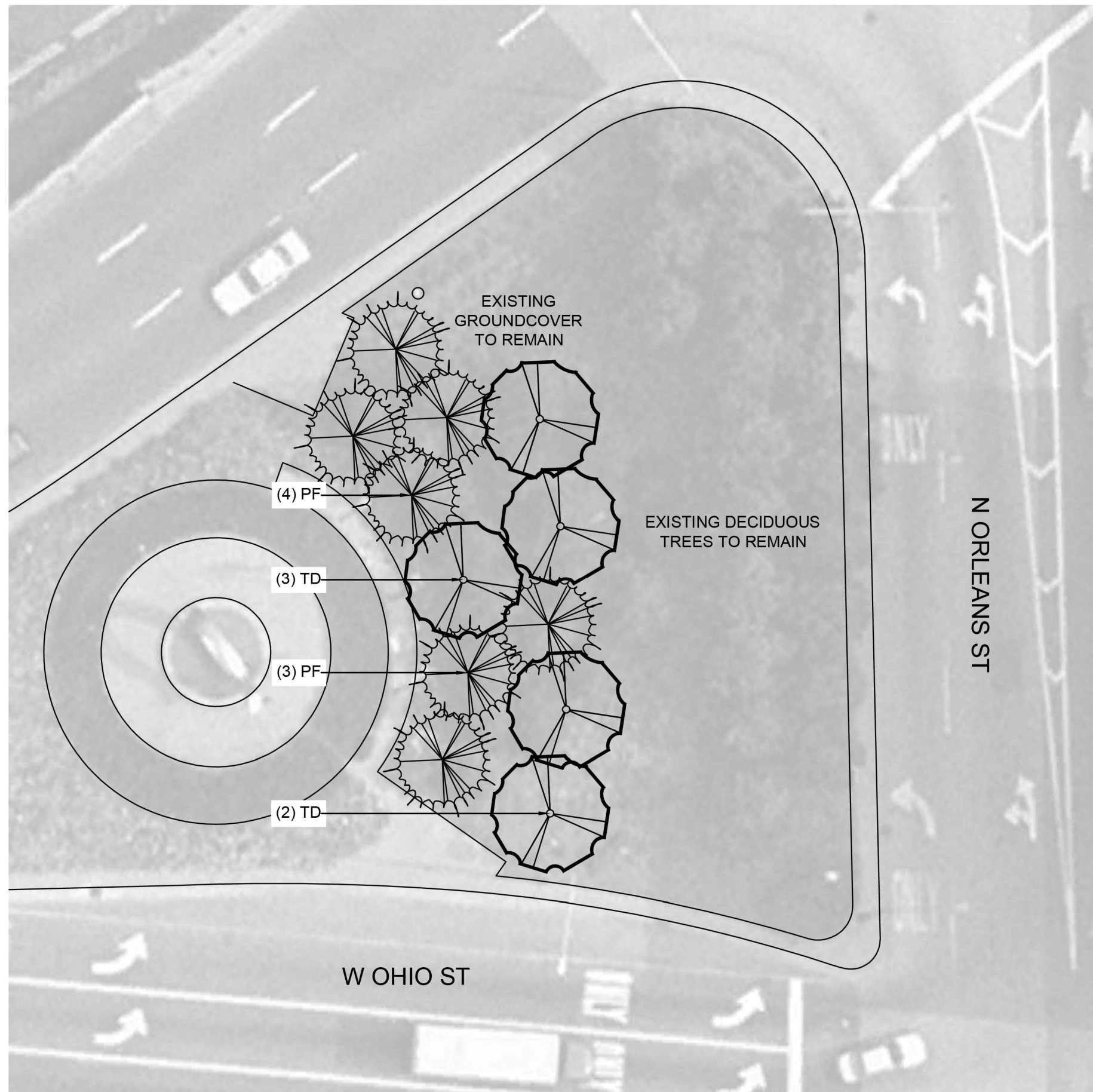
USER NAME = Yuyang.Deng	DESIGNED -	REVISED -
	DRAWN -	REVISED -
	CHECKED -	REVISED -
PLOT DATE = 1/27/2026	DATE -	REVISED -

**STATE OF ILLINOIS
DEPARTMENT OF TRANSPORTATION**

**NORTH ORLEANS TRIANGLE
CHICAGO**

SCALE: SHEET 30 OF 40 SHEETS STA. TO STA.

F.A. RTE.	SECTION	COUNTY	TOTAL SHEETS	SHEET NO.
VAR	2025-1084-ECO,LS	VARIOUS	50	30
CONTRACT NO. 62Y31				
ILLINOIS FED. AID PROJECT				



NOTE:

1. THE CONTRACTOR SHALL NOTIFY THE ROADSIDE DEVELOPMENT UNIT AT 847-705-4171 AT LEAST 48 HOURS PRIOR TO PLANTING FOR LAYOUT.

PLANT LIST

KEY	QTY	SCIENTIFIC NAME	COMMON NAME	SIZE	SPACING	COMMENTS
DECIDUOUS TREE						
TD	5	Taxodium distichum	Bald Cypress	2.5" Cal	on plan	
EVERGREEN TREE						
PF	7	Pinus flexilis	Limber Pine	7' H	on plan	

MODEL: 6 (Sheet) FILE NAME: c:\pwworkspace\yuyang.deng@illinois.gov\d1184688D11825-sht-landscp.dgn

USER NAME = Yuyang.Deng	DESIGNED -	REVISED -
	DRAWN -	REVISED -
	CHECKED -	REVISED -
PLOT DATE = 1/27/2026	DATE -	REVISED -

**STATE OF ILLINOIS
DEPARTMENT OF TRANSPORTATION**

**N ORLEANS ST & OHIO ST TRIANGLE
PLANTING PLAN**

SCALE: SHEET 31 OF 40 SHEETS STA. TO STA.

F.A. RTE.	SECTION	COUNTY	TOTAL SHEETS	SHEET NO.
	2025-1084-ECO,LS	VARIOUS	50	31
CONTRACT NO. 62Y31				
ILLINOIS FED. AID PROJECT				



IDOT KENNEDY LANDSCAPE YARD

1260 W AUGUSTA BLVD, CHICAGO, IL 60622

MODEL: 3 [Sheet]
FILE NAME: c:\p\work\pawfob\yuyang.deng@illinois.gov\d1184688D\115025-sht-landscape.dgn

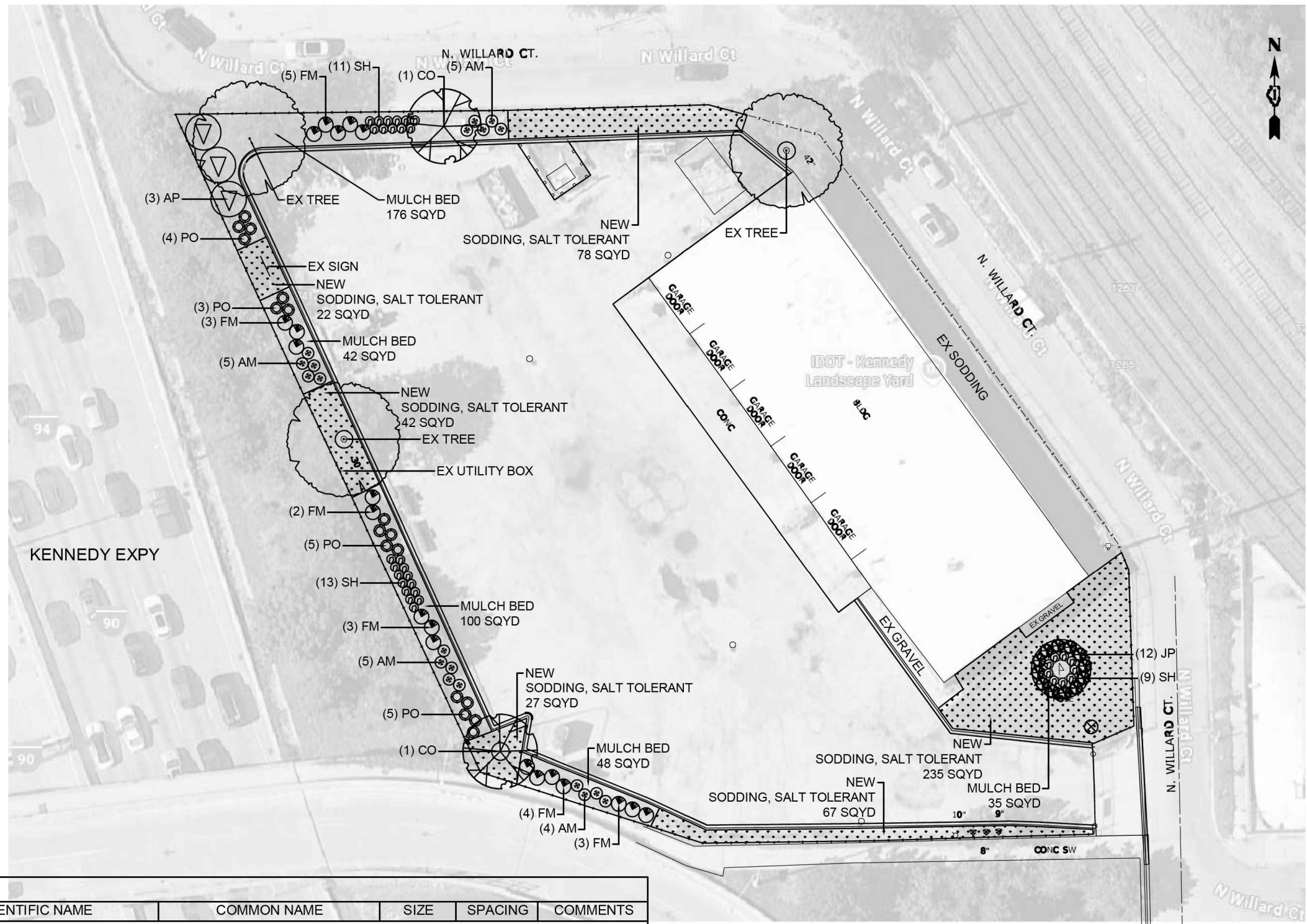
USER NAME = Yuyang.Deng	DESIGNED -	REVISED -
	DRAWN -	REVISED -
	CHECKED -	REVISED -
PLOT DATE = 1/27/2026	DATE -	REVISED -

STATE OF ILLINOIS
DEPARTMENT OF TRANSPORTATION

IDOT LANDSCAPE MAINTENANCE YARD
1260 W. AUGUSTA BLVD, CHICAGO

SCALE: SHEET 32 OF 40 SHEETS STA. TO STA.

F.A. RTE.	SECTION	COUNTY	TOTAL SHEETS	SHEET NO.
VAR	2025-1084-ECO,LS	VARIOUS	50	32
CONTRACT NO. 62Y31				
ILLINOIS FED. AID PROJECT				



PLANT LIST						
KEY	QTY	SCIENTIFIC NAME	COMMON NAME	SIZE	SPACING	COMMENTS
SHADE TREE						
CO	2	<i>Celtis occidentalis</i>	Common Hackberry	2.5" Cal.	on plan	
SHRUB						
AP	3	<i>Aesculus parviflora</i>	Bottlebrush Buckeye	#5	12' o.c.	
AM	19	<i>Aronia melanocarpa 'Morton'</i>	Iroquois Beauty Chokeberry	#5	4' o.c.	
FM	20	<i>Forsythia 'Mindor'</i>	Forsythia Show Off	#3	5' o.c.	
JP	12	<i>Juniperus procumbens 'Nana'</i>	Dwarf Japanese Garden Juniper	#5	4' o.c.	Evergreen
PO	17	<i>Physocarpus opulifolius 'Donna May'</i>	Little Devil Ninebark	#5	4' o.c.	
GRASS						
SH	33	<i>Sporobolus heterolepis</i>	Prairie Dropseed	#1	3' o.c.	

NEW SODDING, SALT TOLERANT: 470 SQYD
 MULCH*: 399 SQYD

* THE COST OF MULCH IS INCLUDED IN THE COST OF PROPOSED PLANTINGS.

MODEL: 4 (Sheet)
 FILE NAME: c:\pwworking\idot\yuyang.deng\1184688D\118025-sht-landscape.dgn



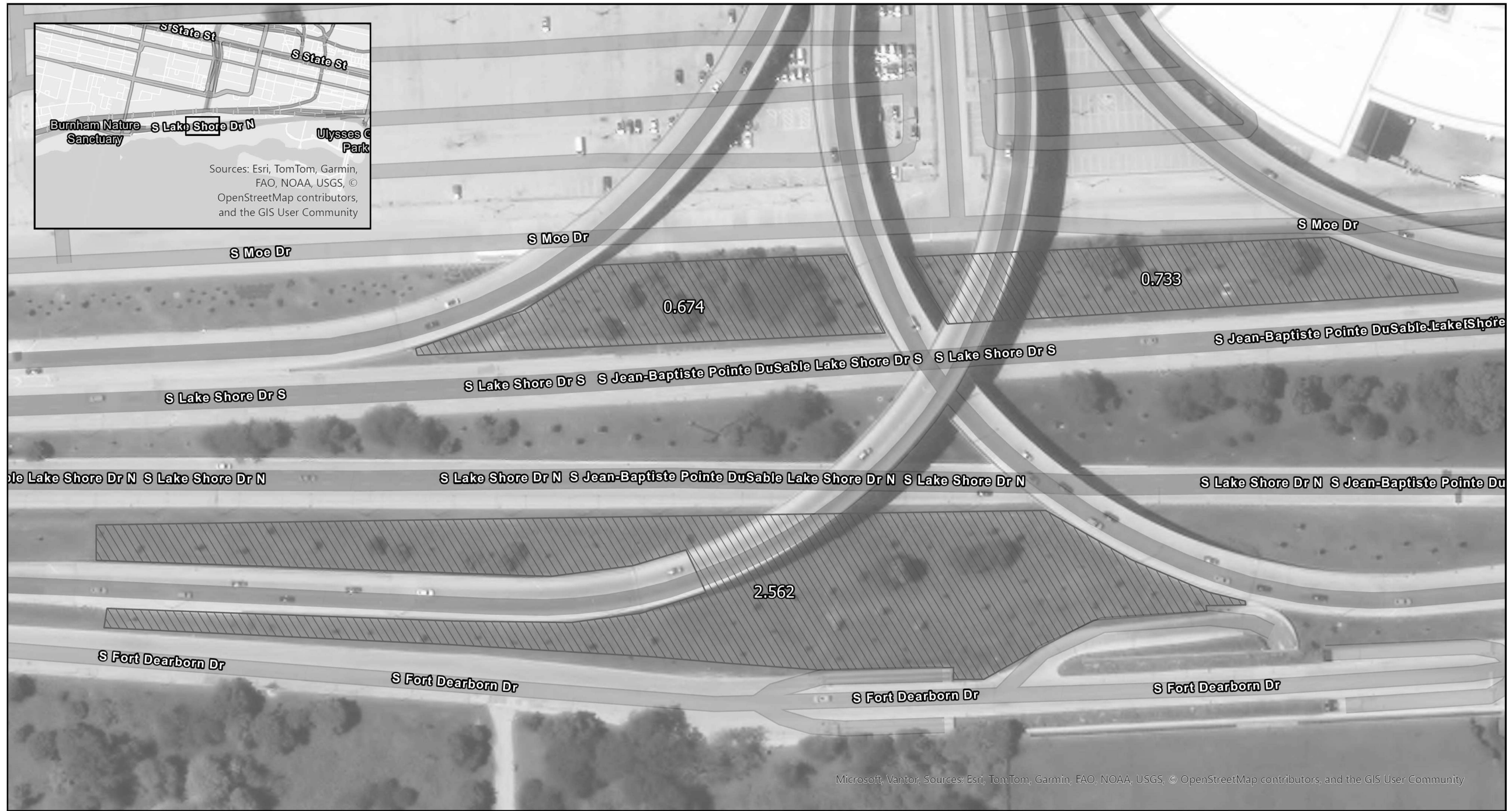
USER NAME = Yuyang.Deng	DESIGNED -	REVISED -
	DRAWN -	REVISED -
	CHECKED -	REVISED -
PLOT DATE = 1/27/2026	DATE -	REVISED -

**STATE OF ILLINOIS
 DEPARTMENT OF TRANSPORTATION**

**IDOT LANDSCAPE YARD
 PLANTING PLAN**

SCALE: SHEET 33 OF 40 SHEETS STA. TO STA.

F.A. RTE.	SECTION	COUNTY	TOTAL SHEETS	SHEET NO.
VAR	2025-1084-ECO,LS	VARIOUS	50	33
CONTRACT NO. 62Y31				
ILLINOIS FED. AID PROJECT				



I-55 AT DUSABLE/ (US41) LAKE SHORE DRIVE

Legend

- Fence
- Wall_Conc_Barrier
- Restrictionsfor TESpecies
- Guardrail
- Wall_other
- RestrictionsforINAINPSites
- NAW
- ▨ Managment units

Treatment areas and pay items will be specified on Work orders



MODEL: 33 (Sheet)
FILE NAME: c:\p\work\paw\yuyang.deng@illinois.gov\1184688D\118025-sht-landsdp.dgn

USER NAME = Yuyang.Deng	DESIGNED -	REVISED -
	DRAWN -	REVISED -
	CHECKED -	REVISED -
PLOT DATE = 1/27/2026	DATE -	REVISED -

**STATE OF ILLINOIS
DEPARTMENT OF TRANSPORTATION**

**I-55 AT DUSABLE/LAKE SHORE DRIVE
CHICAGO**

SCALE: SHEET 34 OF 40 SHEETS STA. TO STA.

F.A. RTE.	SECTION	COUNTY	TOTAL SHEETS	SHEET NO.
VAR	2025-1084-ECO,LS	VARIOUS	50	34
CONTRACT NO. 62Y31				
ILLINOIS FED. AID PROJECT				



County of Will, Microsoft, Vantor. Sources: Esri, TomTom, Garmin, FAO, NOAA, USGS, © OpenStreetMap contributors, and the GIS User Community

US 45 (CALUMET SAG CHANNEL TO 119TH ST)

Legend

- Fence
- Guardrail
- NAW
- Wall_Conc_Barrier
- Wall_other
- Managment units
- Restrictionsfor TESpecies
- RestrictionsforINAINPSites

Treatment areas and pay items will be specified on Work orders



MODEL: 34 (Sheet)
FILE NAME: c:\p\work\palos\yuyang.deng@illinois.gov\1184688D\118025-sht-handsep.dgn

USER NAME = Yuyang.Deng	DESIGNED -	REVISED -
	DRAWN -	REVISED -
	CHECKED -	REVISED -
PLOT DATE = 1/27/2026	DATE -	REVISED -

**STATE OF ILLINOIS
DEPARTMENT OF TRANSPORTATION**

**US 45 (CALUMET SAG CHANNEL TO 119TH ST)
PALOS PARK**

SCALE: SHEET 35 OF 40 SHEETS STA. TO STA.

F.A. RTE.	SECTION	COUNTY	TOTAL SHEETS	SHEET NO.
VAR	2025-1084-ECO,LS	VARIOUS	50	35
CONTRACT NO. 62Y31				
ILLINOIS FED. AID PROJECT				



I-57 AT SAUK TRAIL IN RICHTON PARK

Legend

- Fence
- Wall_Conc_Barrier
- Restrictions for TESpecies
- Guardrail
- Wall_other
- Restrictions for INAINPSites
- NAW
- ▨ Management units

Treatment areas and pay items will be specified on Work orders



MODEL: 35 (Sheet)
FILE NAME: c:\p\work\paw\paw\yuyang.deng@illinois.gov\1154688D\115025-sht-landscp.dgn

USER NAME = Yuyang.Deng	DESIGNED -	REVISED -
	DRAWN -	REVISED -
	CHECKED -	REVISED -
PLOT DATE = 1/27/2026	DATE -	REVISED -

**STATE OF ILLINOIS
DEPARTMENT OF TRANSPORTATION**

**I-57 AT SAUK TRAIL
RICHTON PARK**

SCALE: SHEET 36 OF 40 SHEETS STA. TO STA.

F.A. RTE.	SECTION	COUNTY	TOTAL SHEETS	SHEET NO.
VAR	2025-1084-ECO,LS	VARIOUS	50	36
CONTRACT NO. 62Y31				
ILLINOIS FED. AID PROJECT				



I-80 / I-94 / US 6 & WENTWORTH AVE, LANSING, IL 60438

MODEL: 17 (Sheet)
 FILE NAME: c:\pw_work\pw\byyang.deng@illinois.gov\1184688D\118025-sht-landsdp.dgn

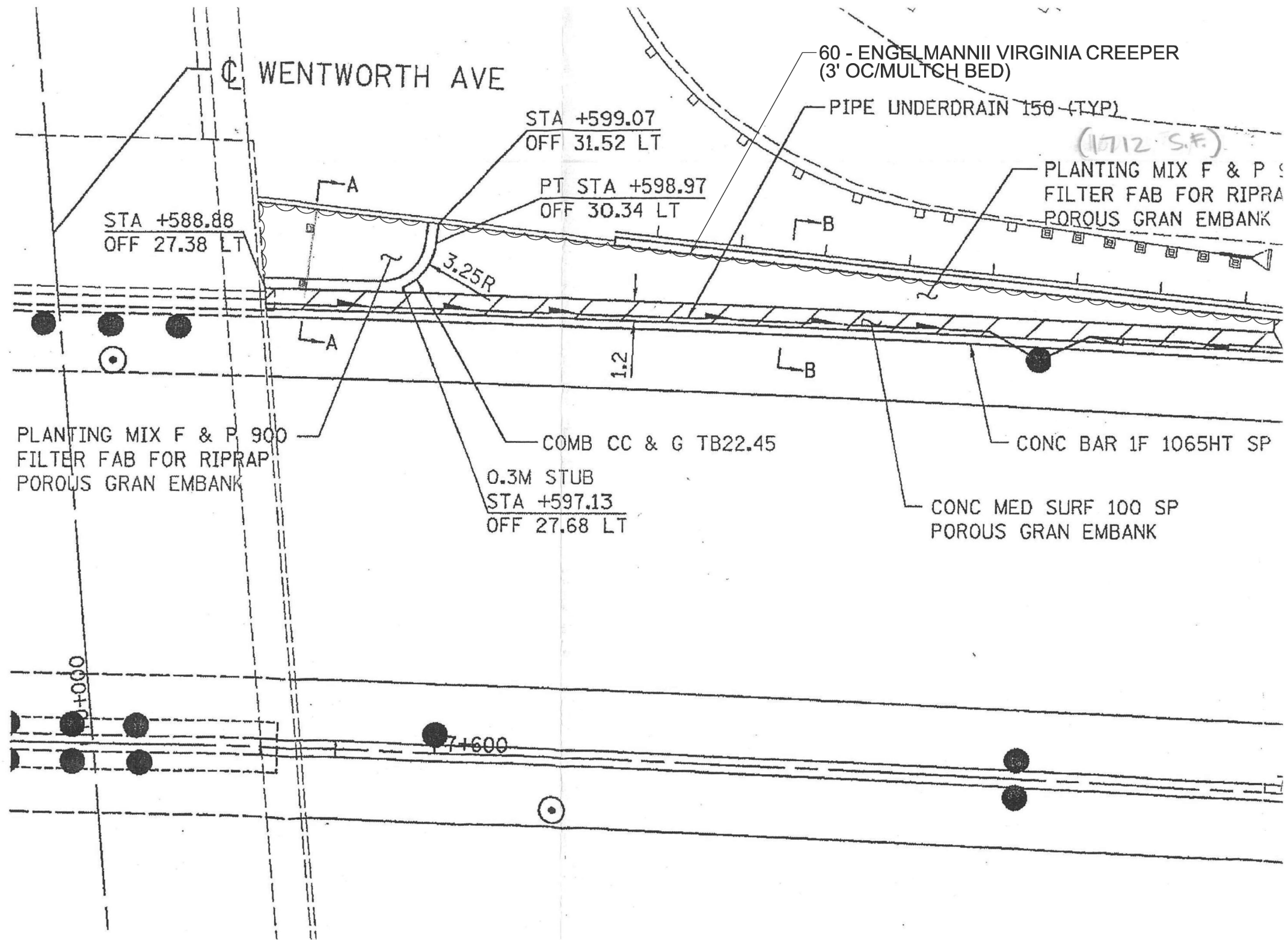
USER NAME = Yuyang.Deng	DESIGNED -	REVISED -
	DRAWN -	REVISED -
	CHECKED -	REVISED -
PLOT DATE = 1/27/2026	DATE -	REVISED -

STATE OF ILLINOIS
 DEPARTMENT OF TRANSPORTATION

I-80/I-94 AT WENTWORTH AVE
 LANSING

SCALE: SHEET 37 OF 40 SHEETS STA. TO STA.

F.A. RTE.	SECTION	COUNTY	TOTAL SHEETS	SHEET NO.
VAR	2025-1084-ECO,LS	VARIOUS	50	37
CONTRACT NO. 62Y31				
ILLINOIS FED. AID PROJECT				



NOTE: THE CONTRACTOR SHALL NOTIFY THE ROADSIDE DEVELOPMENT UNIT AT 847-705-4171 AT LEAST 2 WEEKS PRIOR TO PLANTING FOR DIRECTION AND LAYOUT.

MODEL: 18 (Sheet)
 FILE NAME: c:\p\work\paw\yuyang.deng@illinois.gov\1184688D\15025-sht-landspp.dgn

USER NAME = Yuyang.Deng	DESIGNED -	REVISED -
	DRAWN -	REVISED -
	CHECKED -	REVISED -
PLOT DATE = 1/27/2026	DATE -	REVISED -

STATE OF ILLINOIS
DEPARTMENT OF TRANSPORTATION

I-80/94 WB AT WENTWORTH AVE
PLANTING AREA

SCALE: SHEET 38 OF 40 SHEETS STA. TO STA.

F.A. RTE.	SECTION	COUNTY	TOTAL SHEETS	SHEET NO.
VAR	2025-1084-ECO,LS	VARIOUS	50	38
			CONTRACT NO. 62Y31	
ILLINOIS FED. AID PROJECT				



**US 20/LAKE ST AT GARY AVE
KEENEYVILLE, IL 60172**

Legend

- Fence
- Wall_Conc_Barrier
- Restrictionsfor TESpecies
- Guardrail
- Wall_other
- RestrictionsforINAINPSites
- NAW
- ▨ Managment units

Treatment areas and pay items will be specified on Work orders

Date Exported: 1/27/2026 12:51 PM



MODEL: 41 (Sheet)
FILE NAME: c:\p\work\paw\yuyang.deng@illinois.gov\1154688D\115025-sht-landsdp.dgn

USER NAME = Yuyang.Deng	DESIGNED -	REVISED -
	DRAWN -	REVISED -
	CHECKED -	REVISED -
PLOT DATE = 1/27/2026	DATE -	REVISED -

**STATE OF ILLINOIS
DEPARTMENT OF TRANSPORTATION**

**US 20/LAKE ST AT GARY AVE
KEENEYVILLE**

SCALE: SHEET 39 OF 40 SHEETS STA. TO STA.

F.A. RTE.	SECTION	COUNTY	TOTAL SHEETS	SHEET NO.
VAR	2025-1084-ECO,LS	VARIOUS	50	39
CONTRACT NO. 62Y31				
ILLINOIS FED. AID PROJECT				



IL-53 & WOODRIDGE DR, WOODRIDGE, IL 60517

MODEL: 21 (Sheet)
 FILE NAME: c:\p\work\paw\paw\yuyang.deng@illinois.gov\1154688D\115025-sht-landscp.dgn

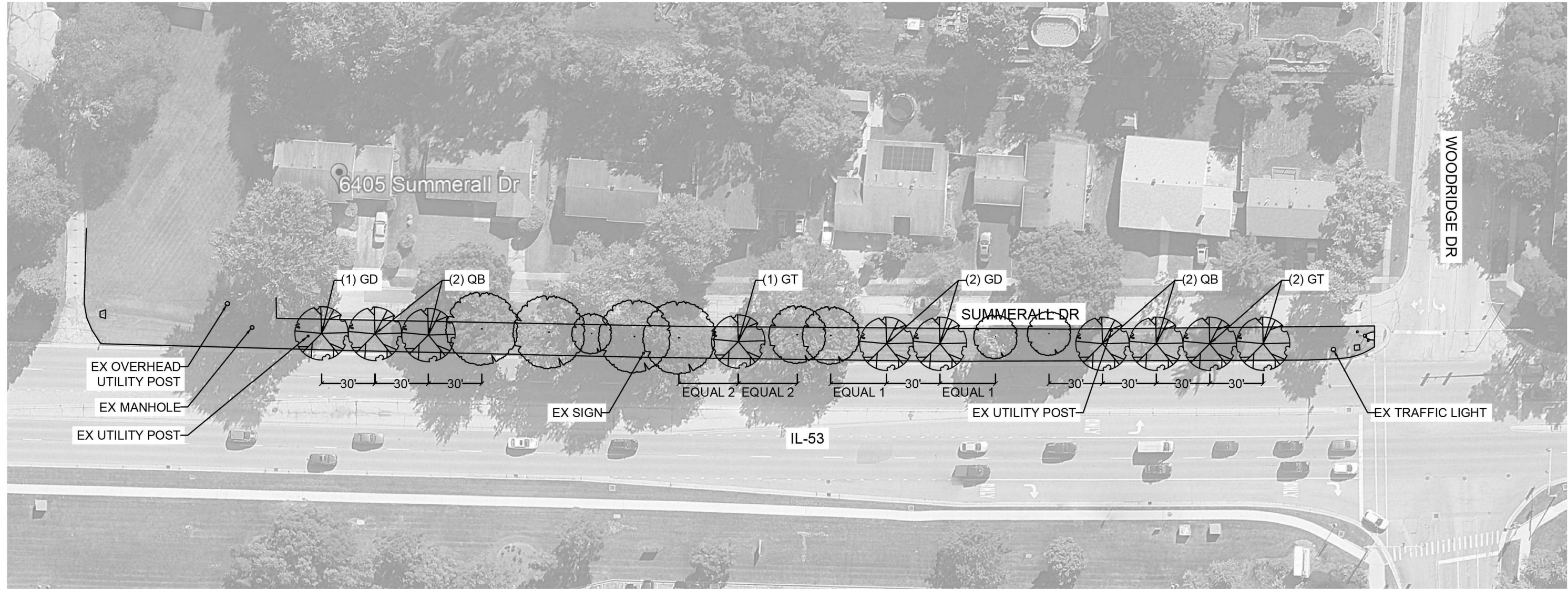
USER NAME = Yuyang.Deng	DESIGNED -	REVISED -
	DRAWN -	REVISED -
	CHECKED -	REVISED -
PLOT DATE = 1/27/2026	DATE -	REVISED -

STATE OF ILLINOIS
 DEPARTMENT OF TRANSPORTATION

IL 53 AT WOODRIDGE DR ALONG SUMMERALL DR
 WOODRIDGE



SCALE: SHEET 40 OF 40 SHEETS STA. TO STA.

F.A. RTE.	SECTION	COUNTY	TOTAL SHEETS	SHEET NO.
VAR	2025-1084-ECO,LS	VARIOUS	50	40
CONTRACT NO. 62Y31				
ILLINOIS FED. AID PROJECT				



PLANT LIST						
KEY	QTY	SCIENTIFIC NAME	COMMON NAME	SIZE	SPACING	COMMENTS
DECIDUOUS TREE						
GT	3	Gleditsia triacanthos 'Impcole'	Imperial Honeylocust	2" Cal	on plan	
GD	3	Gymnocladus dioicus	Kentucky Coffeetree	2.5" Cal	on plan	
QB	4	Quercus bicolor	Swamp White Oak	2" Cal	on plan	

LEGEND

-  EXISTING TREE
-  PROPOSED TREE

NOTE:

- THE CONTRACTOR SHALL NOTIFY THE ROADSIDE DEVELOPMENT UNIT AT 847-705-4171 AT LEAST 48 HOURS PRIOR TO PLANTING FOR LAYOUT.



MODEL: 22 (Sheet)
FILE NAME: c:\pw\work\paw\yuyang.deng@illinois.gov\1184688D\118025-sht-landscp.dgn

USER NAME = Yuyang.Deng	DESIGNED -	REVISED -
	DRAWN -	REVISED -
	CHECKED -	REVISED -
PLOT DATE = 1/27/2026	DATE -	REVISED -

STATE OF ILLINOIS
DEPARTMENT OF TRANSPORTATION

IL 53 AT WOODRIDGE DR. ALONG SUMMERALL DR.
PLANTING PLAN

SCALE: SHEET 41 OF 40 SHEETS STA. TO STA.

F.A. RTE.	SECTION	COUNTY	TOTAL SHEETS	SHEET NO.
VAR	2025-1084-ECO,LS	VARIOUS	50	41
CONTRACT NO. 62Y31				
ILLINOIS FED. AID PROJECT				



IL 83 (I-290 TO IL 38) IN ELMHURST

Legend

- - - Fence
- Wall_Conc_Barrier
- Guardrail
- NAW
- ▨ Management units
- RestrictionsforTESpecies
- ▬ RestrictionsforINAINPSites

Treatment areas and pay items will be specified on Work orders



MODEL: 38 (Sheet)
FILE NAME: c:\p\work\paw\yuyang.deng@illinois.gov\1184688D\118025-sht-landsdp.dgn

USER NAME = Yuyang,Deng	DESIGNED -	REVISED -
	DRAWN -	REVISED -
	CHECKED -	REVISED -
PLOT DATE = 1/27/2026	DATE -	REVISED -

**STATE OF ILLINOIS
DEPARTMENT OF TRANSPORTATION**

**IL 83 (I-290 TO IL 38)
ELMHURST**

SCALE: SHEET 42 OF 40 SHEETS STA. TO STA.

F.A. RTE.	SECTION	COUNTY	TOTAL SHEETS	SHEET NO.
VAR	2025-1084-ECO,LS	VARIOUS	50	42
CONTRACT NO. 62Y31				
ILLINOIS FED. AID PROJECT				



I-290 AT US 20 IN ELMHURST

Legend

- Fence
- Wall_Conc_Barrier
- RestrictionsforTESpecies
- Guardrail
- Wall_other
- RestrictionsforINAINPSites
- NAW
- ▨ Management units

Treatment areas and pay items will be specified on Work orders



MODEL: 37 (Sheet)
FILE NAME: c:\p\work\paw\yuyang.deng@illinois.gov\1184688D\118025-sht-landsdp.dgn

USER NAME = Yuyang.Deng	DESIGNED -	REVISED -
	DRAWN -	REVISED -
	CHECKED -	REVISED -
PLOT DATE = 1/27/2026	DATE -	REVISED -

**STATE OF ILLINOIS
DEPARTMENT OF TRANSPORTATION**

**I-290 AT US 20
ELMHURST**

SCALE: SHEET 43 OF 40 SHEETS STA. TO STA.

F.A. RTE.	SECTION	COUNTY	TOTAL SHEETS	SHEET NO.
VAR	2025-1084-ECO,LS	VARIOUS	50	43
CONTRACT NO. 62Y31				
ILLINOIS FED. AID PROJECT				



159TH ST (RAVINIA AVE TO CRYSTAL CREEK DR) 1 of 2

Legend

- Fence
- Wall_Conc_Barrier
- RestrictionsforTESpecies
- Guardrail
- Wall_other
- RestrictionsforINAINPSites
- NAW
- ▨ Managment units

Treatment areas and pay items will be specified on Work orders



MODEL: 38 (Sheet)
FILE NAME: c:\p\work\paw\byyang.deng@illinois.gov\1184688D\15025-sht-landsdp.dgn

USER NAME = Yuyang.Deng	DESIGNED -	REVISED -
	DRAWN -	REVISED -
	CHECKED -	REVISED -
PLOT DATE = 1/27/2026	DATE -	REVISED -

**STATE OF ILLINOIS
DEPARTMENT OF TRANSPORTATION**

**159TH ST (RAVINIA AVE TO CRYSTAL CREEK DR)
HOMER GLEN**

SCALE: SHEET 44 OF 40 SHEETS STA. TO STA.

F.A. RTE.	SECTION	COUNTY	TOTAL SHEETS	SHEET NO.
VAR	2025-1084-ECO,LS	VARIOUS	50	44
CONTRACT NO. 62Y31				
ILLINOIS FED. AID PROJECT				



159TH ST (RAVINIA AVE TO CRYSTAL CREEK DR) 2 of 2

Legend

- - - Fence
- Wall_Conc_Barrier
- Wall_other
- NAW
- ▨ Managment units
- Restrictionsfor TESpecies
- ▬ RestrictionsforINAINPSites

Treatment areas and pay items will be specified on Work orders



MODEL: 39 (Sheet)
FILE NAME: c:\p\work\paw\yuyang.deng@illinois.gov\1154688D\15025-sht-landsep.dgn

USER NAME = Yuyang.Deng	DESIGNED -	REVISED -
	DRAWN -	REVISED -
	CHECKED -	REVISED -
PLOT DATE = 1/27/2026	DATE -	REVISED -

**STATE OF ILLINOIS
DEPARTMENT OF TRANSPORTATION**

159TH ST (RAVINIA AVE TO CRYSTAL CREEK DR) HOMER GLEN			
SCALE:	SHEET 45	OF 40 SHEETS	STA. TO STA.

F.A. RTE.	SECTION	COUNTY	TOTAL SHEETS	SHEET NO.
VAR	2025-1084-ECO,LS	VARIOUS	50	45
CONTRACT NO. 62Y31				
ILLINOIS FED. AID PROJECT				

MODEL: 40 (Sheet)
FILE NAME: c:\p\work\pvt\yuyang.deng@illinois.gov\1184688D115025-eh-handssp.dgn

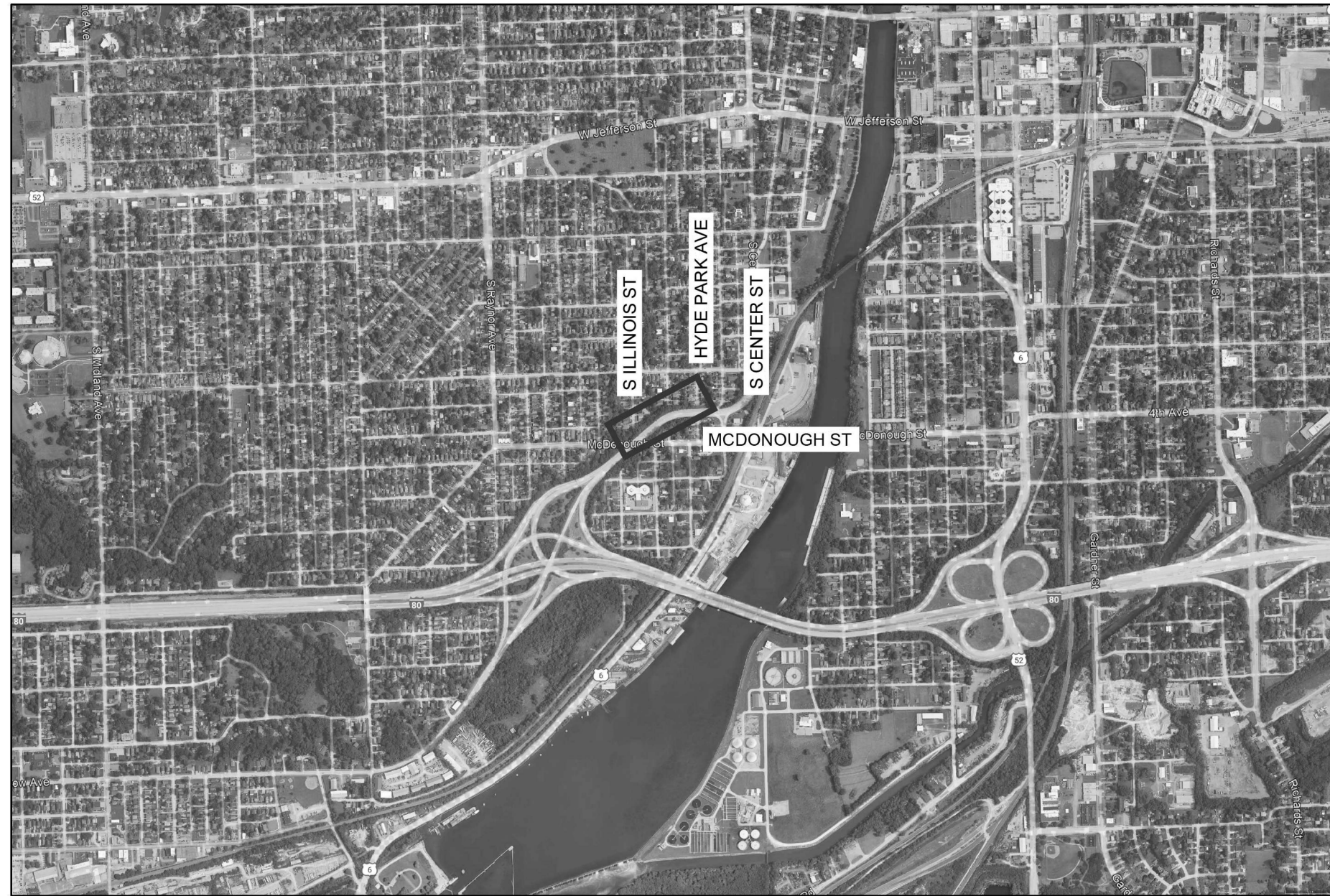
USER NAME = Yuyang.Deng	DESIGNED -	REVISED -
	DRAWN -	REVISED -
	CHECKED -	REVISED -
PLOT DATE = 1/27/2026	DATE -	REVISED -

**STATE OF ILLINOIS
DEPARTMENT OF TRANSPORTATION**

**US 6 AT MARLEY CREEK
MOKENA**

SCALE: SHEET 46 OF 40 SHEETS STA. TO STA.

F.A. RTE.	SECTION	COUNTY	TOTAL SHEETS	SHEET NO.
VAR	2025-1084-ECO,LS	VARIOUS	50	46
CONTRACT NO. 62Y31				
ILLINOIS				FED. AID PROJECT



S CENTER ST, FROM S ILLINOIS ST TO HYDE PARK AVE, JOLIET, IL 60436

MODEL: 15 (Sheet)
 FILE NAME: c:\p\work\paw\yuyang.deng@illinois.gov\1154688D\115025-sht-landscp.dgn

USER NAME = Yuyang.Deng	DESIGNED -	REVISED -
	DRAWN -	REVISED -
	CHECKED -	REVISED -
PLOT DATE = 1/27/2026	DATE -	REVISED -

STATE OF ILLINOIS
 DEPARTMENT OF TRANSPORTATION

CENTER ST (MCDONOUGH ST TO HYDE PARK AVE)
 JOLIET

SCALE: SHEET 47 OF 40 SHEETS STA. TO STA.

F.A. RTE.	SECTION	COUNTY	TOTAL SHEETS	SHEET NO.
VAR	2025-1084-ECO,LS	VARIOUS	50	47
CONTRACT NO. 62Y31				
ILLINOIS FED. AID PROJECT				



NOTE: THE CONTRACTOR SHALL NOTIFY THE ROADSIDE DEVELOPMENT UNIT AT 847-705-4171 AT LEAST 48 HOURS PRIOR TO PLANTING FOR LAYOUT.

MODEL: 16 (Sheet)
 FILE NAME: c:\p\work\powell\yuyang.dwg@illinois.gov\d1184688D\15025-sht-landsdp.dgn

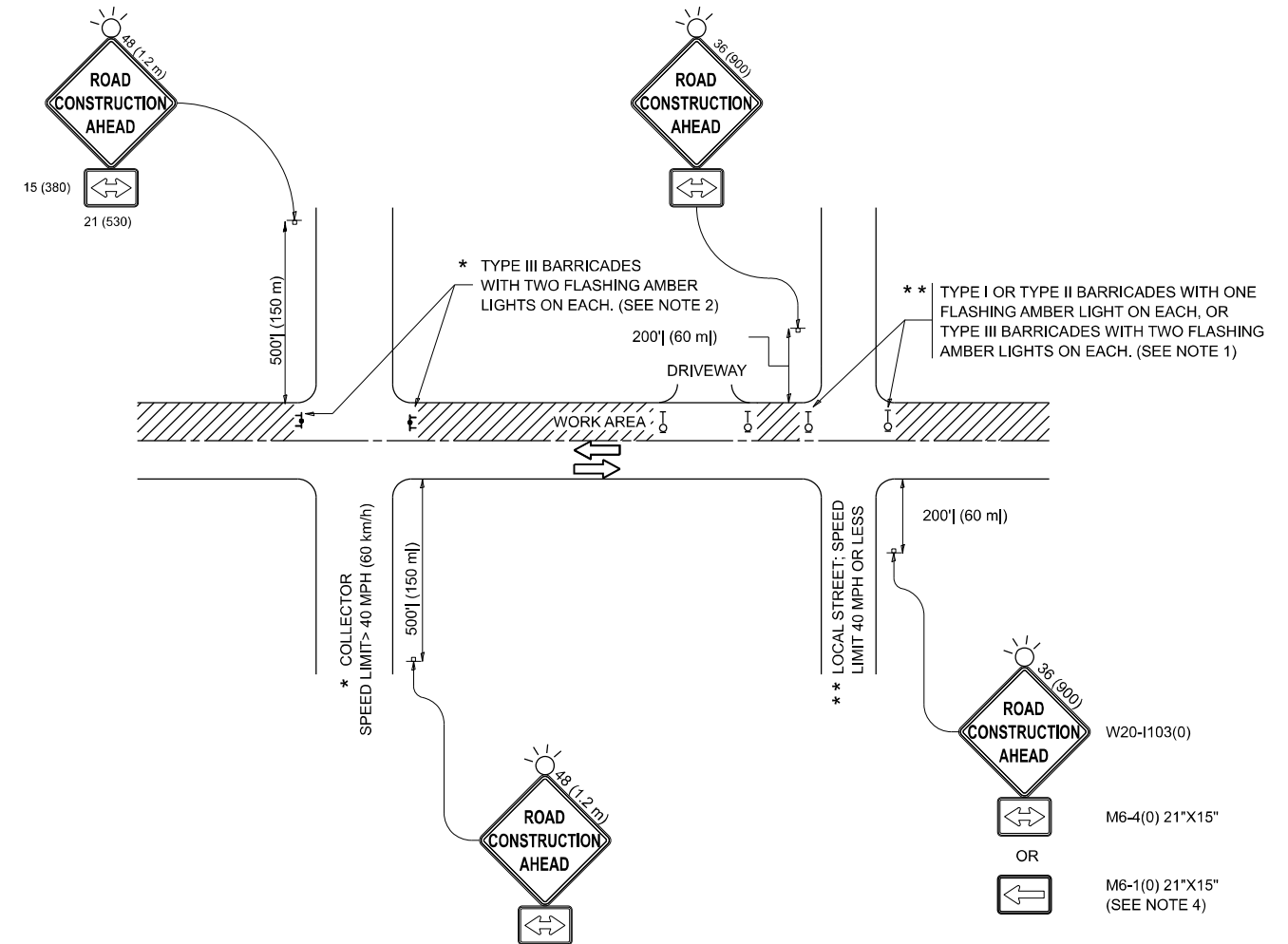
USER NAME = Yuyang.Deng	DESIGNED -	REVISED -
	DRAWN -	REVISED -
	CHECKED -	REVISED -
PLOT DATE = 1/27/2026	DATE -	REVISED -

STATE OF ILLINOIS
 DEPARTMENT OF TRANSPORTATION

CENTER ST (MCDONOUGH ST TO HYDE PARK AVE)
 LOCATION AREA

SCALE: SHEET 48 OF 40 SHEETS STA. TO STA.

F.A. RTE.	SECTION	COUNTY	TOTAL SHEETS	SHEET NO.
VAR	2025-1084-ECO,LS	VARIOUS	50	48
CONTRACT NO. 62Y31				
ILLINOIS FED. AID PROJECT				



NOTES:

1. SIDE ROAD WITH A SPEED LIMIT OF 40 MPH (60 km/h) OR LESS AS SHOWN ON THE DRAWING AND AS DIRECTED BY THE ENGINEER:
 - a) ONE "ROAD CONSTRUCTION AHEAD" SIGN 36 x 36 (900x900) WITH A FLASHER MOUNTED ON IT APPROXIMATELY 200' (60 m) IN ADVANCE OF THE MAIN ROUTE.
 - b) THE CLOSED PORTION OF THE MAIN ROUTE SHALL BE PROTECTED BY BLOCKING WITH TYPE I, TYPE II OR TYPE III BARRICADES, 1/3 OF THE CROSS SECTION OF THE CLOSED PORTION.
2. SIDE ROAD WITH A SPEED LIMIT GREATER THAN 40 MPH (60 km/h) AS SHOWN ON THE DRAWING AND AS DIRECTED BY THE ENGINEER:
 - a) ONE "ROAD CONSTRUCTION AHEAD" SIGN 48 x 48 (1.2 m x 1.2 m) WITH A FLASHER MOUNTED ON IT APPROXIMATELY 500' (150 m) IN ADVANCE OF THE MAIN ROUTE.
 - b) THE CLOSED PORTION OF THE MAIN ROUTE SHALL BE PROTECTED BY BLOCKING WITH TYPE III BARRICADES, 1/2 OF THE CROSS SECTION OF THE CLOSED PORTION.
3. CONES MAY BE SUBSTITUTED FOR BARRICADES OR DRUMS AT HALF THE SPACING DURING DAY OPERATIONS. CONES SHALL BE A MINIMUM OF 28 (710) IN HEIGHT.
4. WHEN THE SIDE ROAD LIES BETWEEN THE BEGINNING OF THE MAINLINE SIGNING AND THE WORK ZONE, A SINGLE HEADED ARROW (M6-1) SHALL BE USED IN LIEU OF THE DOUBLE HEADED ARROW (M6-4).
5. WHEN WORK IS BEING PERFORMED ON A SIDE ROAD OR DRIVEWAY, FOLLOW THE APPLICABLE STANDARD(S). THE DIRECTIONAL ARROW (M6-1 OR M6-4) SHALL BE COVERED OR REMOVED WHEN NO LONGER CONSISTENT WITH THE TRAFFIC CONTROL SET-UP.
6. ADVANCE WARNING SIGNS ARE TO BE OMITTED ON DRIVEWAYS UNLESS OTHERWISE SPECIFIED IN THE PLANS OR BY THE ENGINEER.
7. THE TRAFFIC CONTROL AND PROTECTION FOR SIDE ROADS, INTERSECTIONS, AND DRIVEWAYS SHALL BE INCLUDED IN THE COST OF SPECIFIED TRAFFIC CONTROL STANDARDS OR ITEMS.

All dimensions are in inches (millimeters) unless otherwise shown.

MODEL: TC-10 (Sheet)
FILE NAME: c:\p\work\yuyang.deng@illinois.gov\1184688D\1184688D\1184688D\1184688D.dgn

USER NAME = Yuyang.Deng	DESIGNED - L.H.A.	REVISED - T. RAMMACHER 01-06-00
	DRAWN -	REVISED - A. SCHUETZE 07-01-13
	CHECKED -	REVISED - A. SCHUETZE 09-15-06
PLOT DATE = 1/26/2026	DATE - 06-89	REVISED - D. SENDERAK 05-03-24

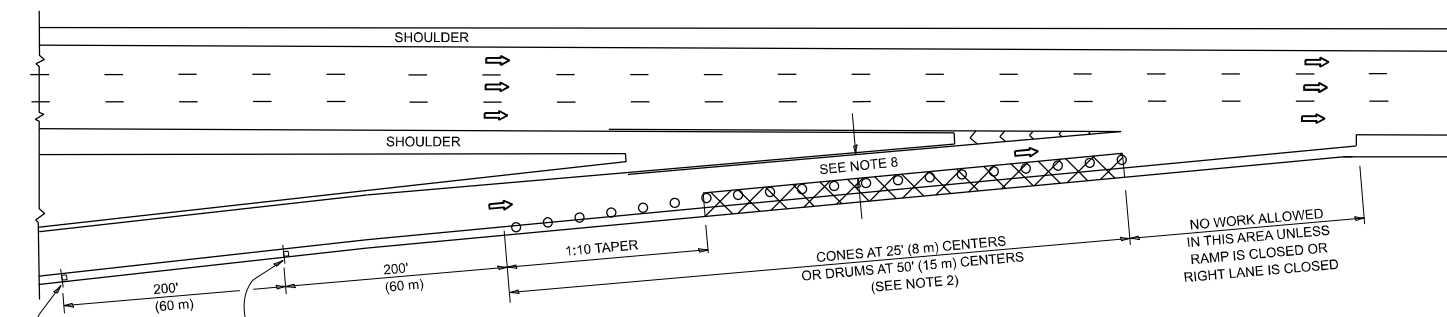
**STATE OF ILLINOIS
DEPARTMENT OF TRANSPORTATION**

**TRAFFIC CONTROL AND PROTECTION FOR
SIDE ROADS, INTERSECTIONS, AND DRIVEWAYS**

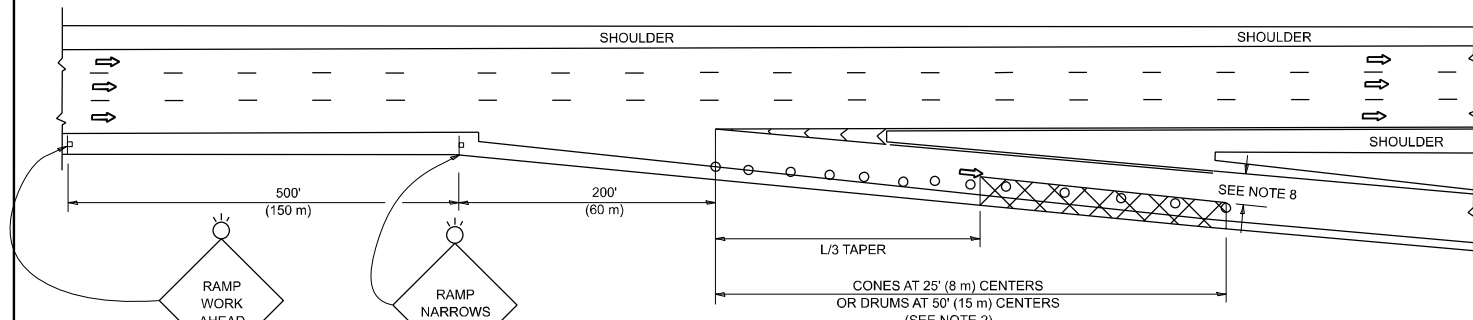
SCALE: SHEET OF SHEETS STA. TO STA.

F.A. RTE.	SECTION	COUNTY	TOTAL SHEETS	SHEET NO.
VAR	2025-1084-ECO.LS	VARIOUS	50	49
TC-10			CONTRACT NO. 62Y31	
		ILLINOIS	FED. AID PROJECT	

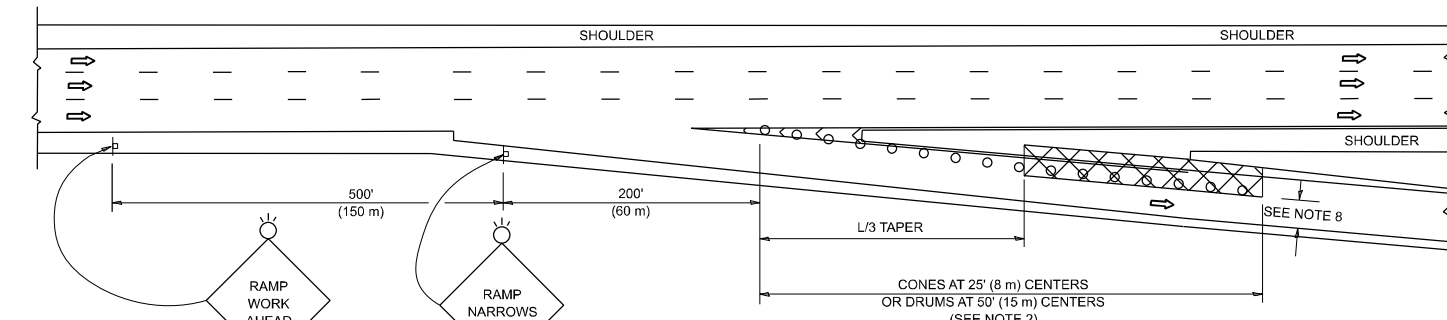
PARTIAL RAMP CLOSURE DETAILS



TYPICAL ENTRANCE RAMP



TYPICAL EXIT RAMP



TYPICAL EXIT RAMP

SYMBOLS

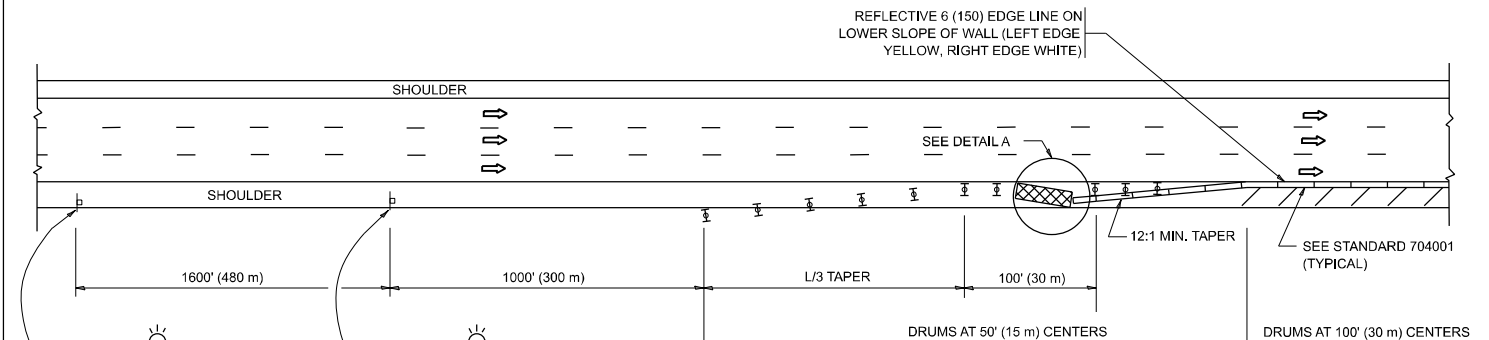
- ACTIVE WORK AREA
- SIGN ON PORTABLE OR PERMANENT SUPPORT
- FLAGGER WITH CONTROL SIGN
- TYPE II BARRICADE OR DRUM
- CONE, DRUM OR BARRICADE
- IMPACT ATTENUATOR OF TYPE AND TEST LEVEL SPECIFIED

GENERAL NOTES:

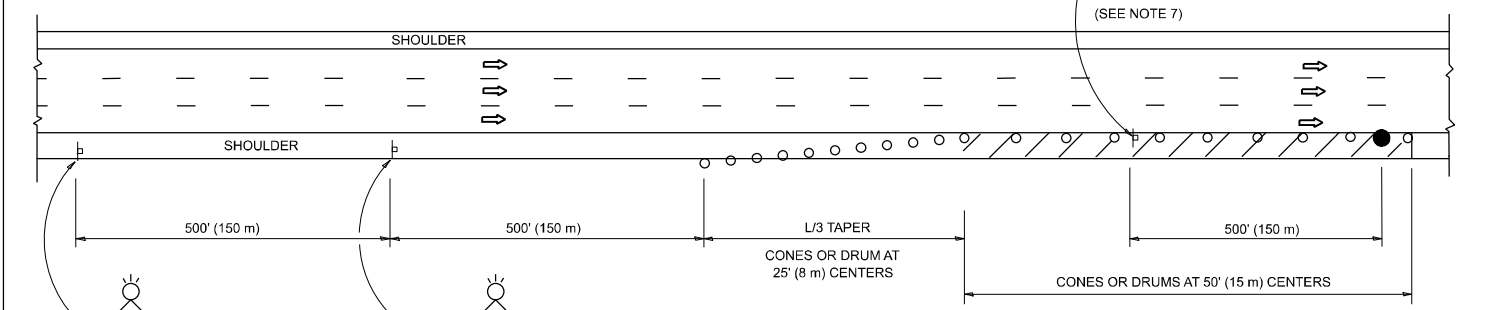
- THE "L" DISTANCE EQUALS:

SPEED LIMIT	FORMULAS
45 mph (80 km/h)	METRIC ENGLISH
OR GREATER:	$L=0.65(W)(S)$ $L=(W)(S)$
	W = WIDTH OF OFFSET IN FEET (METERS)
	S = NORMAL POSTED SPEED MPH (KM/H)
- TYPE II BARRICADES OR DRUMS ARE REQUIRED FOR ALL NIGHTTIME CLOSURES. TYPE II BARRICADES OR DRUMS WITH MONODIRECTIONAL STEADY BURN LIGHTS ARE REQUIRED FOR DELINEATING OBSTACLES, EXCAVATIONS, OR HAZARDS EXCEEDING 100 FT (30m) IN LENGTH AT NIGHT.
- ALL SIGNS SHALL BE POST MOUNTED IF THE CLOSURE TIME EXCEEDS FOUR DAYS.
- FLASHING LIGHTS SHALL BE USED DURING THE HOURS OF DARKNESS AND SHALL BE INSTALLED ABOVE THE FIRST TWO SETS OF SIGNS.

SHOULDER CLOSURE DETAILS

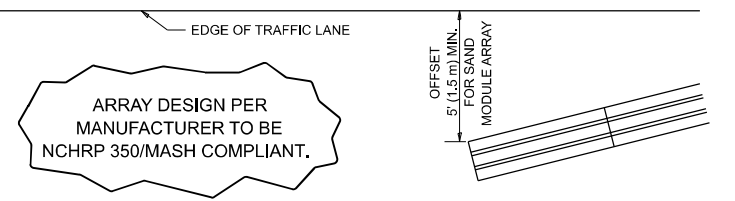


PERMANENT SHOULDER CLOSURE



TEMPORARY SHOULDER CLOSURE

- THIS DETAIL IS USED WHERE:
- VEHICLES, EQUIPMENT, WORKERS OR THEIR ACTIVITIES ENCRUSH IN AN AREA CLOSER THAN 15' (4.5 m) TO THE EDGE OF PAVEMENT FOR A PERIOD IN EXCESS OF 15 MINUTES.



**DETAIL "A"
IMPACT ATTENUATOR, TEMPORARY
(SEE NOTE 5)**

- THE IMPACT ATTENUATOR, TEMPORARY IS NOT REQUIRED WHEN THE TEMPORARY CONCRETE BARRIER WALL IS PROTECTED BY OR IS TIED INTO THE EXISTING GUARDRAIL. IF OFFSET IS LESS THAN 5 FEET USE NARROW USE TYPE DEVICE TO MEET NCHRP350/MASH.
- AUTHORIZATION FROM THE DISTRICT'S BUREAU OF TRAFFIC IS REQUIRED FOR ALL FREEWAY CLOSURES.
- THE FLAGGER AND FLAGGER SIGN ARE REQUIRED AT THE ABOVE WORK SITES WHEN:
 - FOUR OR MORE WORK VEHICLES ENTER THE TRAFFIC LANES IN A ONE HOUR PERIOD.
 - THE WORK ACTIVITY REQUIRES FREQUENT ENCRUSHMENT INTO THE LANE OPEN TO TRAFFIC.
 THE FLAGGER SHALL BE STATIONED APPROXIMATELY 100' (30 m) TO 200' (60 m) IN ADVANCE OF THE WORKERS.

- 12' MIN. WIDTH TANGENT SECTION
16' MIN. WIDTH CURVE SECTION.

- TEMPORARY SHOULDER AND NON-SYSTEM INTERCHANGE PARTIAL CLOSURES ARE ALLOWED WEEKDAYS BETWEEN 9:00 A.M. AND 3:00 P.M. AND BETWEEN 7:00 P.M. AND 5:00 A.M. OR AS APPROVED BY THE EXPRESSWAY TRAFFIC OPERATIONS ENGINEER. PERMANENT SHOULDER AND PARTIAL RAMP CLOSURES WILL ONLY BE PERMITTED IF CALLED FOR IN THE PLANS OR AS APPROVED BY THE EXPRESSWAY OPERATIONS ENGINEER.

ALL DIMENSIONS ARE IN INCHES (MILLIMETERS) UNLESS OTHERWISE SHOWN.

MODEL: TC-17 (Sheet)
FILE NAME: c:\p\work\wv\wv\yuyang.dwg

USER NAME = Yuyang,Deng	DESIGNED -	REVISED - M.D. 06-13
	DRAWN - D.W.S.	REVISED - M.D. 01-18
	CHECKED -	REVISED - M.D. 10-20
PLOT DATE = 1/27/2026	DATE - 11-96	REVISED - D.S. 05-24

**STATE OF ILLINOIS
DEPARTMENT OF TRANSPORTATION**

**TRAFFIC CONTROL DETAILS FOR FREEWAY
SHOULDER CLOSURES AND PARTIAL RAMP CLOSURES**

SCALE: NONE SHEET 1 OF 1 SHEETS STA. TO STA.

F.A. RTE.	SECTION	COUNTY	TOTAL SHEETS	SHEET NO.
VAR	2025-1084-ECO.LS	VARIOUS	50	50
TC-17			CONTRACT NO. 62Y31	
ILLINOIS FED. AID PROJECT				