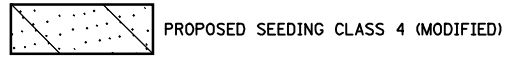


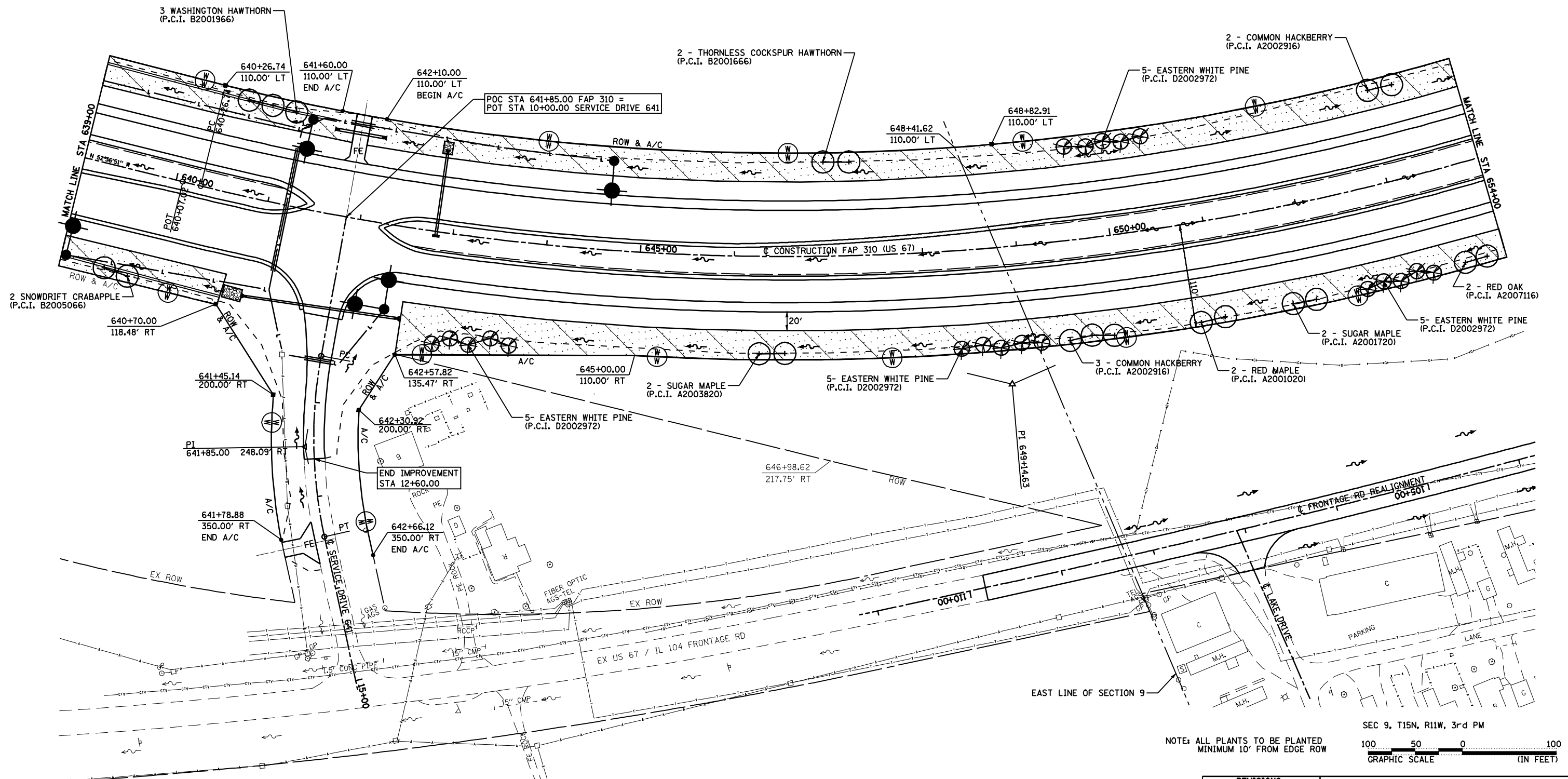
F.A.P. RTE.	SECTION	COUNTY	TOTAL SHEETS	SHEET NO.
310	69-2LS	MORGAN	16	5
STA.		TO STA.		
FED. ROAD DIST. NO.		ILLINOIS FED. AID PROJECT		

SEEDING LEGEND



SEC 10, T15N, R11W, 3rd PM

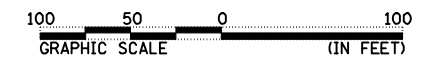
SEC 9, T15N, R11W, 3rd PM



SEC 10, T15N, R11W, 3rd PM

SEC 9, T15N, R11W, 3rd PM

NOTE: ALL PLANTS TO BE PLANTED
MINIMUM 10' FROM EDGE ROW



REVISIONS	
NAME	DATE

ILLINOIS DEPARTMENT OF TRANSPORTATION
LANDSCAPING PLAN
FAP 310 (US 67)
SECTION 69-2(2B)
MORGAN COUNTY

SCALE: VERT. _____
HORIZ. _____
DATE _____

DRAWN BY _____
CHECKED BY _____

FAP 310 STA 639+00 TO STA 654+00

FAP 310 STA 639+00 TO STA 654+00

FAP 310 STA 639+00 TO STA 654+00