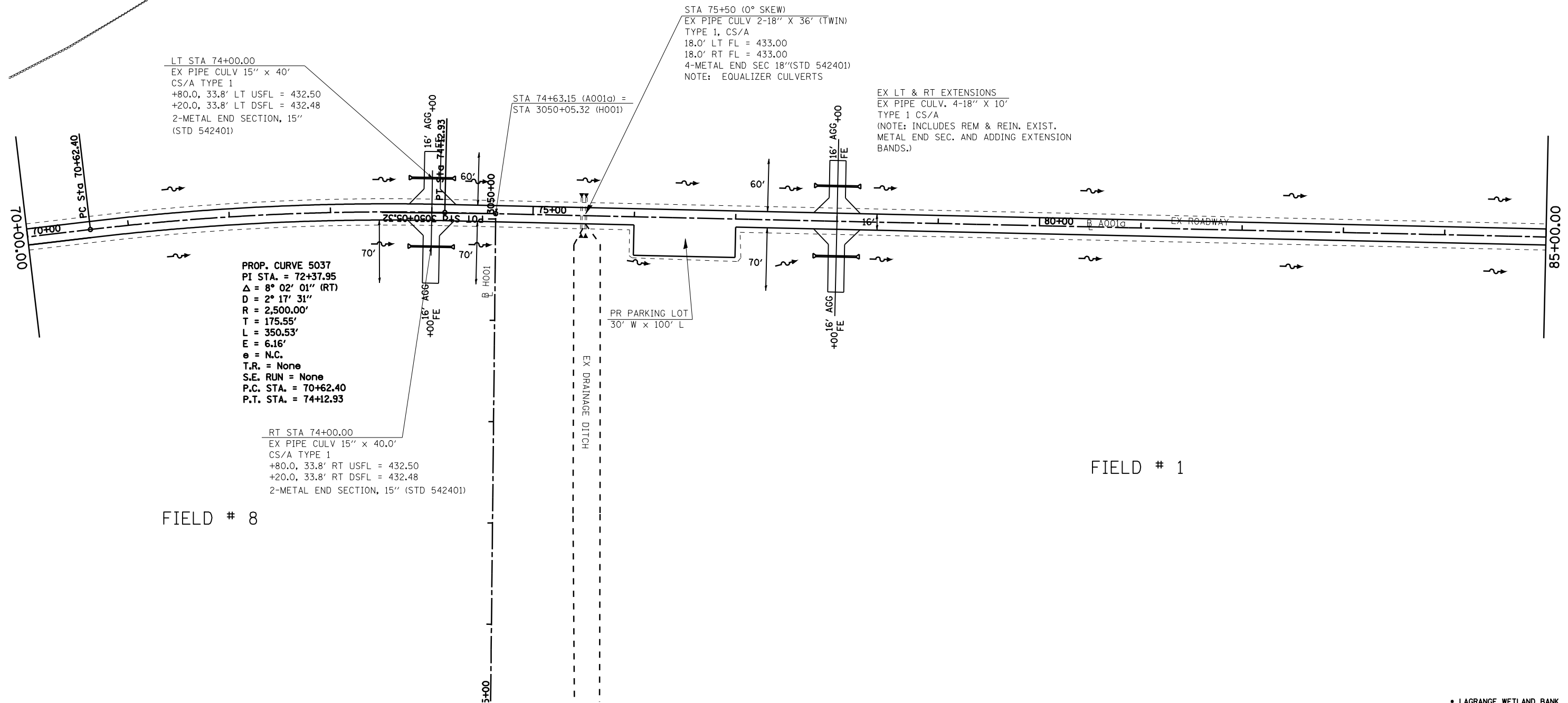


FIELD # 5

FIELD # 6



FIELD # 8

FIELD # 1

LT STA 74+00.00  
EX PIPE CULV 15" x 40'  
CS/A TYPE 1  
+80.0, 33.8' LT USFL = 432.50  
+20.0, 33.8' LT DSFL = 432.48  
2-METAL END SECTION, 15"  
(STD 542401)

STA 75+50 (0° SKEW)  
EX PIPE CULV 2-18" X 36' (TWIN)  
TYPE 1, CS/A  
18.0' LT FL = 433.00  
18.0' RT FL = 433.00  
4-METAL END SEC 18"(STD 542401)  
NOTE: EQUALIZER CULVERTS

EX LT & RT EXTENSIONS  
EX PIPE CULV. 4-18" X 10'  
TYPE 1 CS/A  
(NOTE: INCLUDES REM & REIN. EXIST.  
METAL END SEC. AND ADDING EXTENSION  
BANDS.)

PROP. CURVE 5037  
PI STA. = 72+37.95  
 $\Delta = 8^\circ 02' 01''$  (RT)  
 $D = 2^\circ 17' 31''$   
 $R = 2,500.00'$   
 $T = 175.55'$   
 $L = 350.53'$   
 $E = 6.16'$   
 $e = \text{N.C.}$   
T.R. = None  
S.E. RUN = None  
P.C. STA. = 70+62.40  
P.T. STA. = 74+12.93

RT STA 74+00.00  
EX PIPE CULV 15" x 40.0'  
CS/A TYPE 1  
+80.0, 33.8' RT USFL = 432.50  
+20.0, 33.8' RT DSFL = 432.48  
2-METAL END SECTION, 15" (STD 542401)

• LAGRANGE WETLAND BANK  
•• D6 WETLAND MITIGATION 4

FILE NAME =	USER NAME = laughlinr1	DESIGNED -	REVISED -
et:\pwork\pwidot\LAUGHLINRL\dms28174\SttPlanA001a.dgn		DRAWN - EJW	REVISED -
	PLOT SCALE = 100.0000' / IN.	CHECKED - JCN	REVISED -
	PLOT DATE = Feb-03-2010 04:31:07PM	DATE -	REVISED -

**STATE OF ILLINOIS**  
**DEPARTMENT OF TRANSPORTATION**

**PLAN SHEET - A001a**

SCALE: SHEET NO. OF SHEETS STA. TO STA.

F.A.P. RTE.	SECTION	COUNTY	TOTAL SHEETS	SHEET NO.
*	**	BROWN	37	21
CONTRACT NO. 72969				
FED. ROAD DIST. NO. ILLINOIS FED. AID PROJECT				