

ELEVATION

Showing Anchor Bars and Dimensions (Looking North)

END VIEW

Showing Anchor Bars and Dimensions

**Piers 1, 2, 3, 5, 6, 7, 9, 10 & 11
 ***Piers 4 & 8

NOTE:

The Contractor shall take the necessary means to ensure that the concrete between the bottom of the existing cap and the top of the new cantilever support is properly consolidated. The method of consolidation shall be approved by the Engineer.
 The Contractor shall take precautions that no live loads be allowed on the outside beam during the concrete removal from the west pier nose and until the proposed concrete has cured.

NOTES:

Existing reinforcement extending into the new construction shall be cleaned and incorporated into the new construction. Cost included with Concrete Removal.
 Any existing reinforcement bars which are intended to be incorporated into the new construction that are damaged during concrete removal operations shall be repaired or replaced using an approved bar splicer or anchorage system. Cost included with Concrete Removal.
 All exposed edges shall have 2" chamfers.

**BILL OF MATERIAL
 ONE SUPPORT BRACKET
 PIERS 4 & 8**

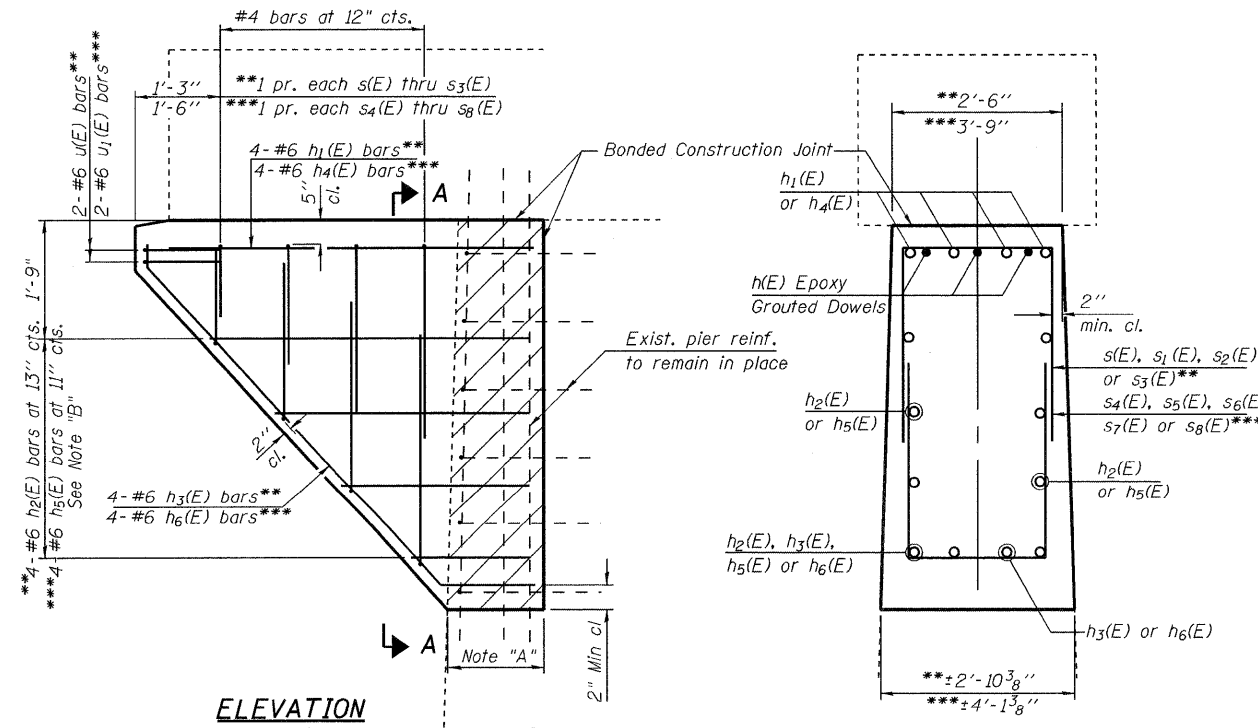
Bar	No.	Size	Length	Shape
h(E)	21	#6	3'-0"	—
h ₄ (E)	4	#6	7'-3"	—
h ₅ (E)	4	#6	9'-0"	—
h ₆ (E)	4	#6	9'-6"	—
s ₄ (E)	2	#4	6'-1"	□
s ₅ (E)	2	#4	7'-1"	□
s ₆ (E)	2	#4	7'-11"	□
s ₇ (E)	2	#4	8'-11"	□
s ₈ (E)	2	#4	9'-9"	□
u ₁ (E)	2	#6	7'-4"	□
Concrete Removal		Cu. Yd.	1.3	
Concrete Structures		Cu. Yd.	4.4	
Reinforcement Bars, Epoxy Coated		Lb.	330	

**BILL OF MATERIAL
 ONE SUPPORT BRACKET
 PIERS 1, 2, 3, 5, 6, 7, 9, 10 & 11**

Bar	No.	Size	Length	Shape
h(E)	21	#6	3'-0"	—
h ₁ (E)	4	#6	5'-8"	—
h ₂ (E)	4	#6	6'-10"	—
h ₃ (E)	4	#6	8'-2"	—
s(E)	2	#4	4'-10"	□
s ₁ (E)	2	#4	5'-10"	□
s ₂ (E)	2	#4	7'-0"	□
s ₃ (E)	2	#4	8'-0"	□
u(E)	2	#6	6'-1"	□
Concrete Removal		Cu. Yd.	0.6	
Concrete Structures		Cu. Yd.	2.3	
Reinforcement Bars, Epoxy Coated		Lb.	270	

*Epoxy grout h(E) bars into 9" drilled holes. See Section 584 of the Standard Specifications.

Note "A":
 Hatched area indicates concrete removal of a portion of the west nose of the existing pier stem. Existing reinforcement in the nose shall be cleaned, straightened and incorporated into the new construction. Cost Included With Concrete Removal.

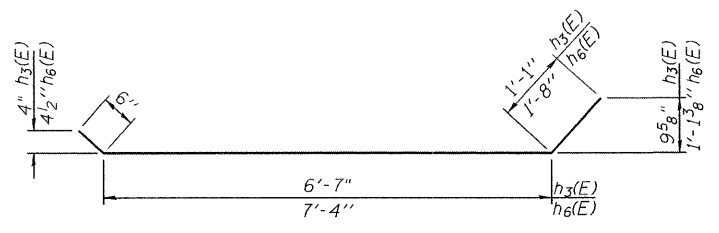


ELEVATION

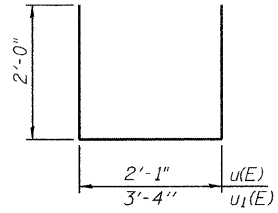
Showing Reinforcement (Looking North)

SECTION A-A

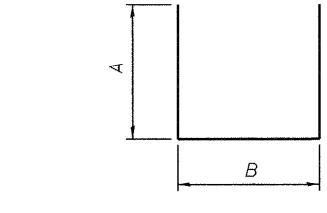
Note "B":
 Order bars full length. Cut to fit and use remainder in opposite face.



BAR h₃(E) or h₆(E)



BAR u(E) & u₁(E)



BARS s(E), s₁(E), s₂(E), s₃(E), s₄(E), s₅(E), s₆(E), s₇(E) & s₈(E)

A & B DIMENSIONS

BAR	A	B
s(E)	1'-4"	2'-2"
s ₁ (E)	1'-10"	2'-2"
s ₂ (E)	2'-5"	2'-2"
s ₃ (E)	2'-11"	2'-2"
s ₄ (E)	1'-4"	3'-5"
s ₅ (E)	1'-10"	3'-5"
s ₆ (E)	2'-3"	3'-5"
s ₇ (E)	2'-9"	3'-5"
s ₈ (E)	3'-2"	3'-5"

MIN BAR LAP

#4 bars 1'-4"

PLOT DATE: 6/25/09
 PLOT SCALE: 1/8" = 1'-0"
 USER NAME: JML

ILLINOIS DEPARTMENT OF TRANSPORTATION

SHEET TITLE

CONCRETE BRACKETS AT PIERS

PROJECT	PROJECT NO.
I-55 SB OVER KANKAKEE RIVER	03095-16
FAI ROUTE 55, SECTION 88(B&B-1)BR	SCALE
WILL COUNTY	DATE
SN 099-0002	6/25/09
	DRAWN BY
	TFG
	CHECKED BY
	KPS/MCB
	DRAWING NO.

COOMBE-BLOXDORF P.C.
 Engineers / Land Surveyors
 Springfield, Illinois
 Design Firm License No. 184-002703

7
OF 9 SHTS