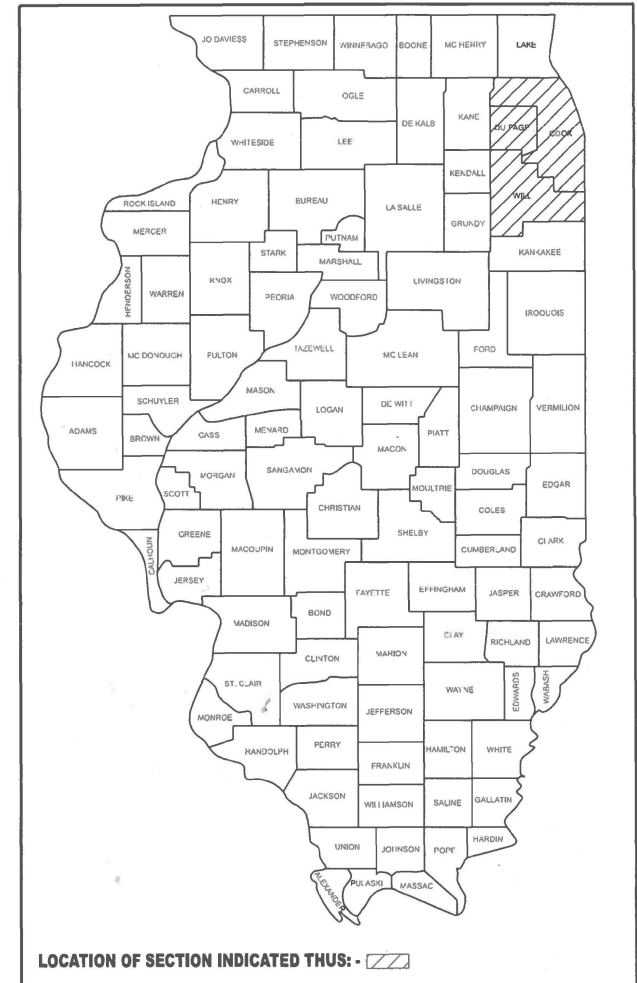


STATE OF ILLINOIS
DEPARTMENT OF TRANSPORTATION

F.A. ** RTE.	SECTION	COUNTY	TOTAL SHEETS	SHEET NO.
VAR	2025-2128-SWP(EXPNT)	*VARIOUS	11	1
		ILLINOIS	CONTRACT NO. 80C91	

**VARIOUS *COOK, DUPAGE, & WILL

D-91-182-26

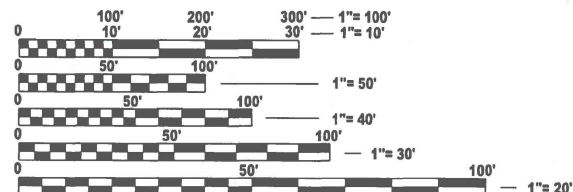


FOR INDEX OF SHEETS, SEE SHEET NO. 2

PROPOSED HIGHWAY PLANS

ROUTE: VARIOUS DISTRICT ONE
SECTION 2025-2128-SWP(EXPNT)
VARIOUS NIGHTTIME EXPRESSWAY SWEEPING
COUNTY: VARIOUS (COOK, DUPAGE, & WILL)

C-91-214-26



FULL SIZE PLANS HAVE BEEN PREPARED USING STANDARD ENGINEERING SCALES. REDUCED SIZED PLANS WILL NOT CONFORM TO STANDARD SCALES. IN MAKING MEASUREMENTS ON REDUCED PLANS, THE ABOVE SCALES MAY BE USED.

J.U.L.I.E.
JOINT UTILITY LOCATION INFORMATION FOR EXCAVATION
1-800-892-0123
OR 811

LOCATION MAPS - SEE INDEX OF SHEETS

PROJECT ENGINEER: OSCAR OLIVEROS 847-705-4548
PROJECT MANAGER: JACEK EJMONT 847-705-4641

CONTRACT NO. 80C91

STATE OF ILLINOIS
DEPARTMENT OF TRANSPORTATION

SUBMITTED Dec 12 20 25 IR
Jacek EJMONT REGIONAL ENGINEER

January 23 20 26
Scott A. [Signature]
ENGINEER OF DESIGN AND ENVIRONMENT

January 23 20 26
[Signature] 5
DIRECTOR OF HIGHWAYS PROJECT IMPLEMENTATION

PRINTED BY THE AUTHORITY
OF THE STATE OF ILLINOIS

INDEX OF SHEETS

SHEET #	DESCRIPTION
1.	TITLE SHEET
2.	INDEX OF SHEETS & APPLICABLE STATE STANDARDS
3.	SUMMARY OF QUANTITIES & GENERAL NOTES
4.	EXPRESSWAY TYPICAL SECTIONS
5.	TYPICAL ROADWAY CLEANING DETAILS
6.	EXPRESSWAY CLEANING LOCATION MAP KENNEDY EXPRESSWAY (I-90, I-90/94, & I-190)
7.	EXPRESSWAY CLEANING LOCATION MAP EISENHOWER (I-290) & STEVENSON (I-55)
8.	EXPRESSWAY CLEANING LOCATION MAP I-55, I-80, & BISHOP FORD (I-94)
9.	ENTRANCE AND EXIT RAMP CLOSURE DETAILS (TC-08)
10.	SINGLE LANE WEAVE AND MULTI LANE WEAVE (TC-09)
11.	TRAFFIC CONTROL DETAILS FOR FREEWAY SHOULDER CLOSURES AND PARTIAL RAMP CLOSURES (TC-17)

STATE STANDARDS

STANDARD NO.	DESCRIPTION
701400-12	APPROACH TO LANE CLOSURE, FREEWAY/EXPRESSWAY
701401-13	LANE CLOSURE, FREEWAY/EXPRESSWAY
701411-09	LANE CLOSURE, MULTILANE, AT ENTRANCE OR EXIT RAMP, FOR SPEEDS ≥ 45 MPH
701426-09	LANE CLOSURE, MULTILANE, INTERMITTENT OR MOVING OPER., FOR SPEEDS > 45 MPH
701428-01	TRAFFIC CONTROL SETUP AND REMOVAL FREEWAY/EXPRESSWAY
701901-11	TRAFFIC CONTROL DEVICES

MODEL: Index of Sheets and State Standards (Sheet)
 FILE NAME: c:\p\work\kwid\thanh.v@illinois.gov\1182722\118226-sh1-gemote.dgn

USER NAME = thanh.vo PLOT DATE = 12/5/2025	DESIGNED - DRAWN - CHECKED - DATE -	REVISED - REVISED - REVISED - REVISED -	STATE OF ILLINOIS DEPARTMENT OF TRANSPORTATION	INDEX OF SHEETS & APPLICABLE STATE STANDARDS	<table border="1" style="width: 100%; border-collapse: collapse;"> <tr> <td style="font-size: 8px;">F.A. ** RTE.</td> <td style="font-size: 8px;">SECTION</td> <td style="font-size: 8px;">COUNTY</td> <td style="font-size: 8px;">TOTAL SHEETS</td> <td style="font-size: 8px;">SHEET NO.</td> </tr> <tr> <td style="font-size: 8px;">VAR</td> <td style="font-size: 8px;">2025-2128-SWP(EXPNT)</td> <td style="font-size: 8px;">**VARIOUS</td> <td style="font-size: 8px;">11</td> <td style="font-size: 8px;">2</td> </tr> <tr> <td colspan="5" style="font-size: 8px; text-align: center;">CONTRACT NO. 80C91</td> </tr> </table>	F.A. ** RTE.	SECTION	COUNTY	TOTAL SHEETS	SHEET NO.	VAR	2025-2128-SWP(EXPNT)	**VARIOUS	11	2	CONTRACT NO. 80C91				
F.A. ** RTE.	SECTION	COUNTY	TOTAL SHEETS	SHEET NO.																
VAR	2025-2128-SWP(EXPNT)	**VARIOUS	11	2																
CONTRACT NO. 80C91																				
			SCALE:	SHEET 1 OF 1 SHEETS	STA. TO STA.	ILLINOIS FED. AID PROJECT	**VARIOUS	*COOK, DUPAGE, & WILL												

SUMMARY OF QUANTITIES

CODE NO.	ITEM	UNIT	URBAN	100 % STATE 0044
			TOTAL QUANTITIES	EXPRESSWAY
Z0010617	SUPPLEMENTAL SWEEPING	MILE	200	200
X0329915	FULL EXPRESSWAY CLEANING CYCLE	EACH	4	4

NOTES:

1. THE CONTRACTOR IS EXPECTED TO COMPLETE A MINIMUM OF TWO CYCLES PER CALENDAR YEAR. THE SCHEDULE MAY VARY AS DIRECTED BY THE ENGINEER.
2. EXPRESSWAY CLEANING CYCLE SCHEDULE WILL BE COORDINATED DURING THE PRE-CONSTRUCTION MEETING. THE CONTRACTOR SHALL NOT START CLEANING CYCLES BEFORE THE DATES SCHEDULED WITHOUT WRITTEN AUTHORIZATION FROM THE ENGINEER.
3. TRAFFIC CONTROL AND PROTECTION WILL NOT BE PAID FOR AS SEPARATE ITEMS, BUT THE COSTS SHALL BE CONSIDERED AS INCLUDED IN THE CONTRACT UNIT PRICES FOR THE CONSTRUCTION ITEMS INVOLVED, AND NO ADDITIONAL COMPENSATION WILL BE ALLOWED.
4. THE CONTRACTOR SHALL REQUEST AND GAIN APPROVAL FROM THE ILLINOIS DEPARTMENT OF TRANSPORTATION'S EXPRESSWAY TRAFFIC OPERATIONS ENGINEER AT WWW.IDOTLCS.COM TWENTY-FOUR (24) HOURS IN ADVANCE OF ALL DAILY LANE, RAMP AND SHOULDER CLOSURES AND 7 DAYS IN ADVANCE OF ALL PERMANENT AND WEEKEND CLOSURES ON ALL FREEWAYS AND/OR EXPRESSWAYS IN DISTRICT ONE.
5. NO DAILY CONTRACTOR WORK REQUESTS / SCHEDULING SHALL BE AUTHORIZED OR APPROVED TO START WHEN IT IS DETERMINED BY THE ENGINEER THAT WEATHER CONDITIONS WILL BE UNFAVORABLE. APPROVAL OF ALL DAILY CONTRACTOR WORK SCHEDULE REQUEST SHALL BE SOLELY DETERMINED BY THE ENGINEER.
6. ALL LANE AND SHOULDER CLOSURES SHALL BE IMMEDIATELY REMOVED DURING ALL ADVERSE WEATHER CONDITIONS WITHOUT EXCEPTION, INCLUDING BUT NOT LIMITED TO RAIN, WET ROAD SURFACE (SPRAY FROM TIRES), MIST, DRIZZLE, SLEET, SNOW, FOG AND ANY OTHER CIRCUMSTANCE DETERMINED UNSAFE BY THE ENGINEER. THE CONTRACTOR SHALL IMPLEMENT THIS CONTRACT REQUIREMENT IMMEDIATELY WITHOUT WAITING FOR DEPARTMENT INSTRUCTIONS.
7. SWEEPING WILL NOT BE ALLOWED WHEN TEMPERATURES OR WIND CHILL FACTORS ARE FORECASTED BY THE DEPARTMENTS CERTIFIED CONSULTING METEOROLOGISTS TO BE AT OR DROP BELOW FREEZING. TEMPERATURE MUST BE ABOVE THIRTY-TWO (32) DEGREES FAHRENHEIT. ALL SHOULDER AND CURB LINES MUST BE FREE OF ANY EXISTING SNOW AND/OR ICE. DRY SWEEPING SHALL BE ALLOWED ONLY IF IT IS CONSIDERED AN EMERGENCY, IMMEDIATE HAZARD, OR ANY WORK AS DESIGNATED BY THE DEPARTMENT THAT REQUIRES FIRST PRIORITY CORRECTIVE ACTION.
8. NO WORK WILL BE ALLOWED DAY OR NIGHT ON THE FOLLOWING DATES UNLESS IT IS CONSIDERED AN EMERGENCY, IMMEDIATE HAZARD OR ANY WORK AS DESIGNATED BY THE DEPARTMENT THAT REQUIRES FIRST PRIORITY CORRECTIVE ACTION:

2026

APRIL 3 - 6	EASTER HOLIDAY
MAY 23 - 27	MEMORIAL DAY HOLIDAY
JULY 3 - 7	INDEPENDENCE DAY HOLIDAY
NOVEMBER 25 - DECEMBER 1	THANKSGIVING HOLIDAY
DECEMBER 21 - JANUARY 1, 2027	CHRISTMAS / NEW YEAR'S HOLIDAY

2027

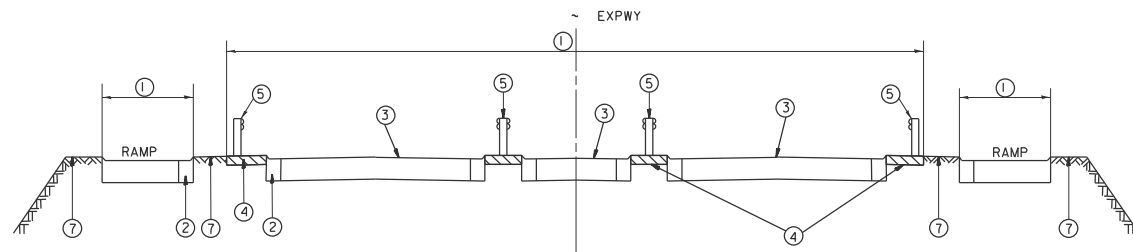
MARCH 26 - 29	EASTER HOLIDAY
MAY 28 - JUNE 4	MEMORIAL DAY HOLIDAY
JULY 2 - 6	INDEPENDENCE DAY HOLIDAY
NOVEMBER 24 - NOVEMBER 30	THANKSGIVING HOLIDAY
DECEMBER 21 - JANUARY 1, 2028	CHRISTMAS / NEW YEAR'S HOLIDAY

MODEL: SOQ and General Notes (Sheet)
FILE NAME: c:\p\work\182722\182722\182722\182722-182722-182722.dgn

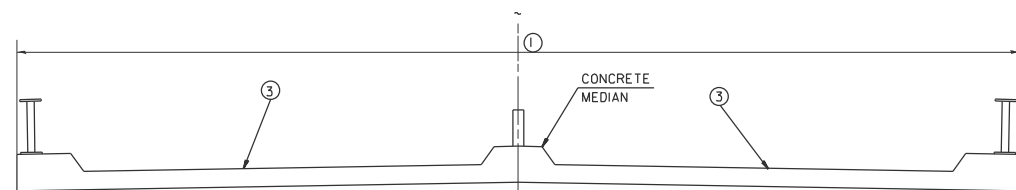
USER NAME = thanh.vo	DESIGNED -	REVISED -	STATE OF ILLINOIS DEPARTMENT OF TRANSPORTATION	SUMMARY OF QUANTITIES & GENERAL NOTES				F.A.** RTE.	SECTION	COUNTY	TOTAL SHEETS	SHEET NO.	
	DRAWN -	REVISED -						VAR	2025-2128-SWP(EXPNT)	*VARIOUS	11	3	
	CHECKED -	REVISED -						CONTRACT NO. 80C91					
PLOT DATE = 12/5/2025	DATE -	REVISED -						SCALE:	SHEET 1	OF 1	SHEETS	STA.	TO STA.

**VARIOUS

*COOK, DUPAGE, & WILL

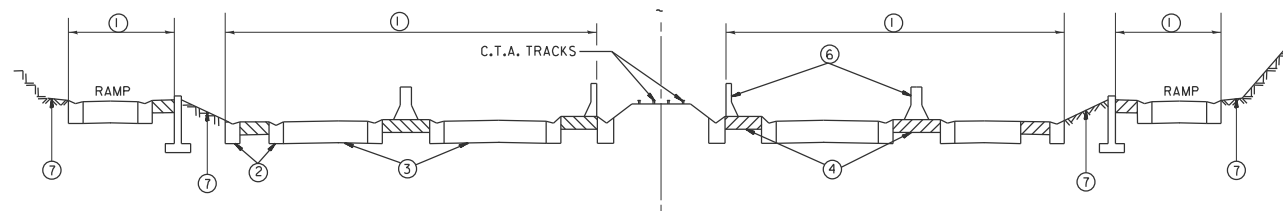


TYPICAL EXPRESSWAY CROSS-SECTION NO. 1

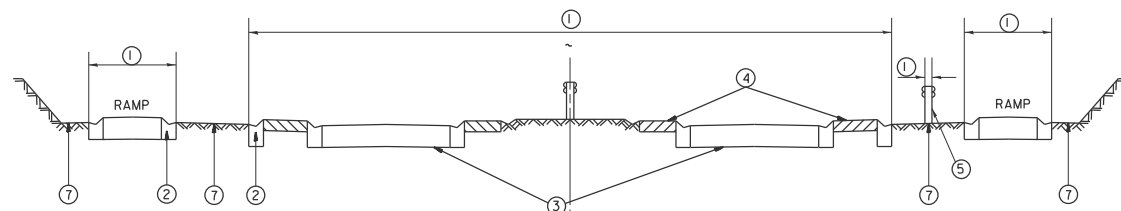


TYPICAL CROSS-SECTION OF ELEVATED ROADWAY

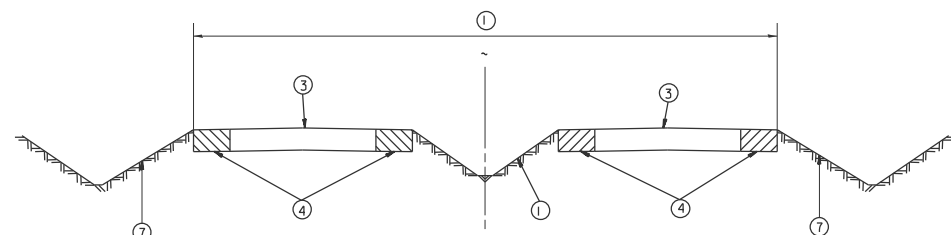
TYPICAL EXPRESSWAY CROSS-SECTION NO. 2



TYPICAL EXPRESSWAY CROSS-SECTION NO. 3



TYPICAL EXPRESSWAY CROSS-SECTION NO. 4



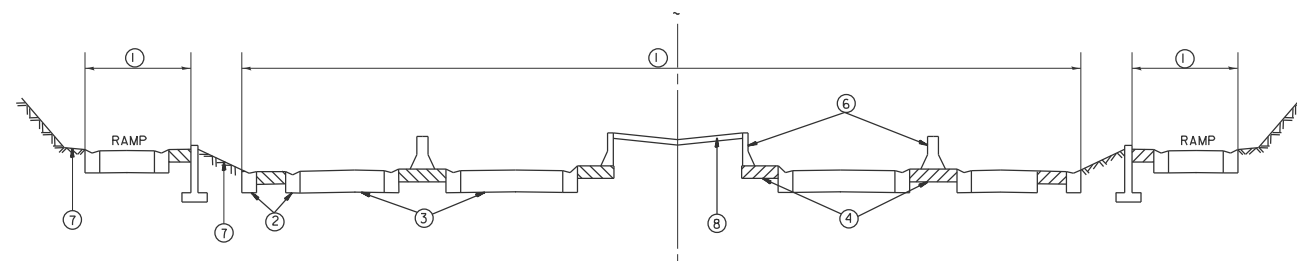
TYPICAL EXPRESSWAY CROSS-SECTION NO. 5

LEGEND

- ① AREA OF ROADWAY CLEANING, DEBRIS AND RUBBISH REMOVAL
- ② CURB AND GUTTER
- ③ TRAVELED ROADWAY
- ④ STABILIZED SHOULDER OR MEDIAN OR SIDEWALK
- ⑤ STEEL PLATE GUARD RAIL (SEE NOTE A)
- ⑥ CONCRETE BARRIER
- ⑦ NON STABILIZED SURFACE
- ⑧ RAISED CONCRETE MEDIAN

NOTE:

- A) ALL MATERIAL/DEBRIS REGARDLESS OF THE THICKNESS AND SIZE SHALL BE REMOVED AND PROPERLY DISPOSED FROM THE STABILIZED SURFACE.
- B) ALL DRAINAGE STRUCTURES MUST BE CLEARED OF DEBRIS WITHIN THE MEDIAN.



TYPICAL EXPRESSWAY CROSS-SECTION NO. 6

MODEL: Typical Section 1 (Sheet)
FILE NAME: c:\p\work\182722\182722\182722-shr-typical.dgn

USER NAME = thanh.vo	DESIGNED -	REVISED -
	DRAWN -	REVISED -
	CHECKED -	REVISED -
PLOT DATE = 12/5/2025	DATE -	REVISED -

STATE OF ILLINOIS
DEPARTMENT OF TRANSPORTATION

TYPICAL EXPRESSWAY CROSS-SECTIONS

SCALE: SHEET 1 OF 2 SHEETS STA. TO STA.

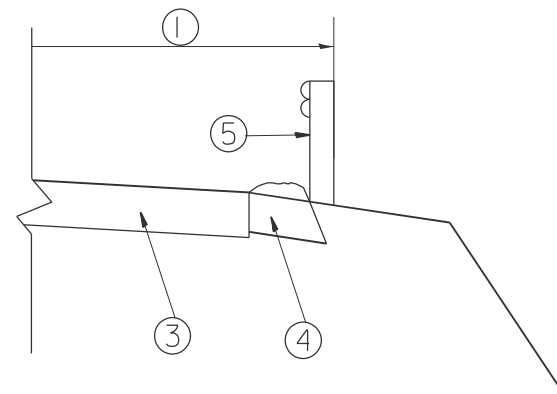
F.A. RTE.	SECTION	COUNTY	TOTAL SHEETS	SHEET NO.
VAR	2025-2128-SWP(EXPNT)	**VARIOUS	11	4
CONTRACT NO. 80C91				

LEGEND

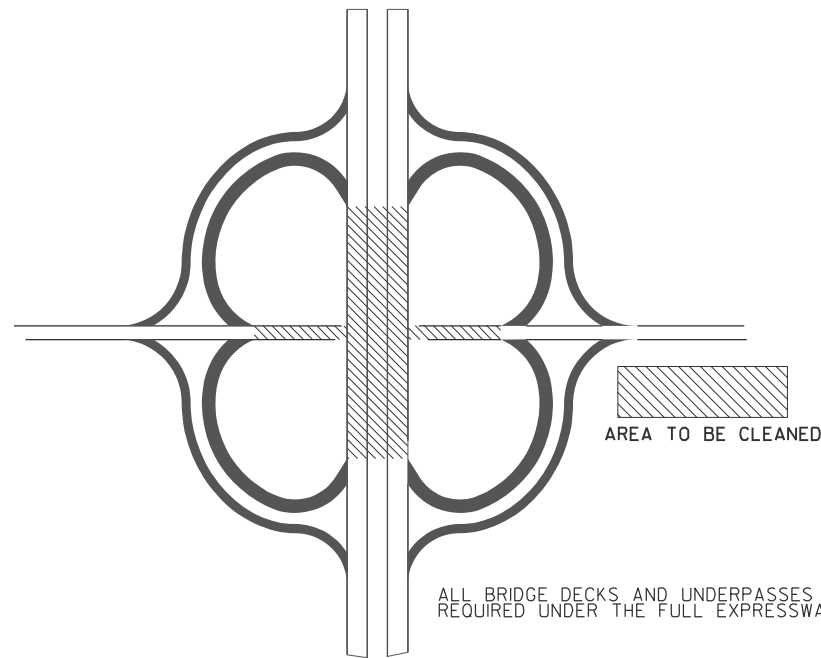
- ① AREA OF ROADWAY CLEANING, DEBRIS AND RUBBISH REMOVAL
- ② CURB AND GUTTER
- ③ TRAVELED ROADWAY
- ④ STABILIZED SHOULDER OR MEDIAN OR SIDEWALK
- ⑤ STEEL PLATE GUARD RAIL (SEE NOTE A)

NOTE:

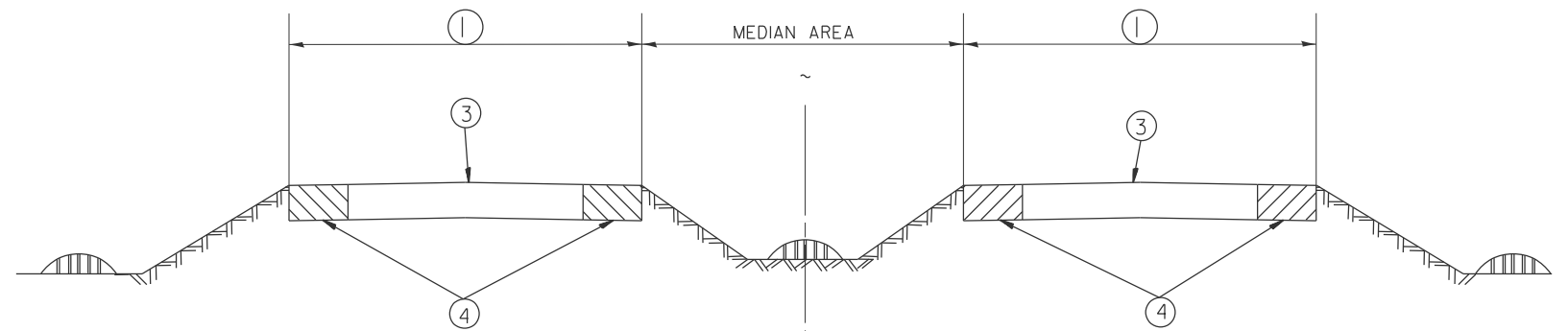
- A) ALL MATERIAL/DEBRIS REGARDLESS OF THE THICKNESS AND SIZE SHALL BE REMOVED AND PROPERLY DISPOSED FROM THE STABILIZED SURFACE.
- B) ALL DRAINAGE STRUCTURES MUST BE CLEARED OF DEBRIS WITHIN THE MEDIAN.



GUARDRAIL LABOR DETAIL



ALL BRIDGE DECKS AND UNDERPASSES MUST BE SWEEP AS REQUIRED UNDER THE FULL EXPRESSWAY CLEANING CYCLE.



CLEANING DETAIL

MODEL: Typical Section 2 (Sheet)
FILE NAME: c:\p\work\pvt\thanh.vo\illinois.gov\1182722\118226-shr-typical.dgn

USER NAME = thanh.vo	DESIGNED -	REVISED -
	DRAWN -	REVISED -
	CHECKED -	REVISED -
PLOT DATE = 12/5/2025	DATE -	REVISED -

**STATE OF ILLINOIS
DEPARTMENT OF TRANSPORTATION**

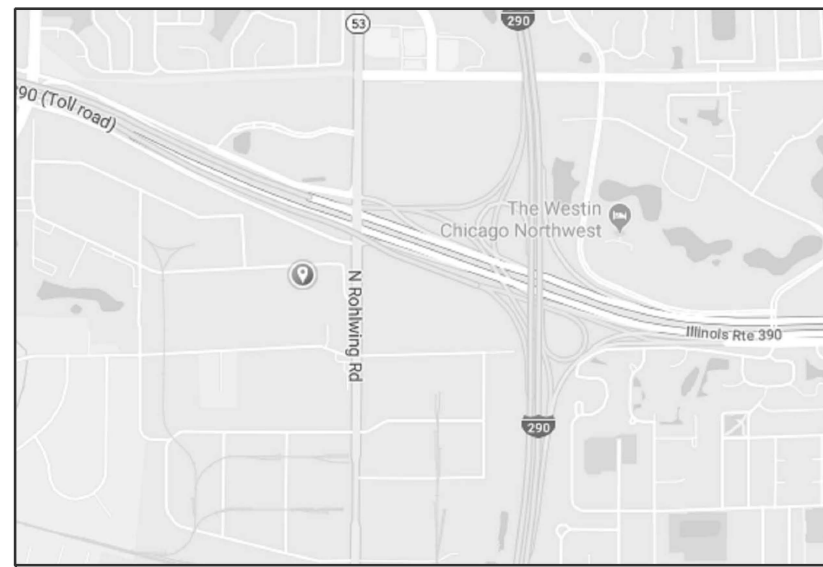
TYPICAL ROADWAY CLEANING DETAILS

SCALE: SHEET 2 OF 2 SHEETS STA. TO STA.

F.A. ** RTE.	SECTION	COUNTY	TOTAL SHEETS	SHEET NO.
VAR	2025-2128-SWP(EXPNT)	**VARIOUS	11	5
CONTRACT NO. 80C91				

**VARIOUS

*COOK, DUPAGE, & WILL



- DISTRICT NO. 1**
- STATE HIGHWAYS & EXPRESSWAYS WITHIN STATE JURISDICTION (EXCEPT TOLLWAYS)
 - STATE HIGHWAYS & EXPRESSWAYS TO BE CLEANED
 - FUTURE HIGHWAYS
 - VARIOUS AGENCIES HIGHWAYS



NIGHT CLEANING ONLY
Kennedy Expressway

Interstate 90/94 from Interstate 290 to Interstate 90/94 junction at Edens Expressway, Interstate 90 from Interstate 90/94 junction at Edens Expressway to Interstate 90/190, Interstate 190 from Interstate 90/190 junction to the east limits of O'Hare International Airport, Interstate 90 from the Interstate 90/190 junction to the tollway turnaround, all ramps from the Jane Byrne Circle Interchange at the Eisenhower Expressway to Lake St, the Ohio Street Feeder, from Orleans Street to Interstate 90/94 and any ramps unable to be swept during the day, if applicable.

MODEL: Kennedy Map (Sheet)
FILE NAME: c:\paw_work\paw\tothanh.vc\illinois.gov\1182722\118226-sht-details.dgn

USER NAME = thanh.vo	DESIGNED -	REVISED -
	DRAWN -	REVISED -
	CHECKED -	REVISED -
PLOT DATE = 12/5/2025	DATE -	REVISED -

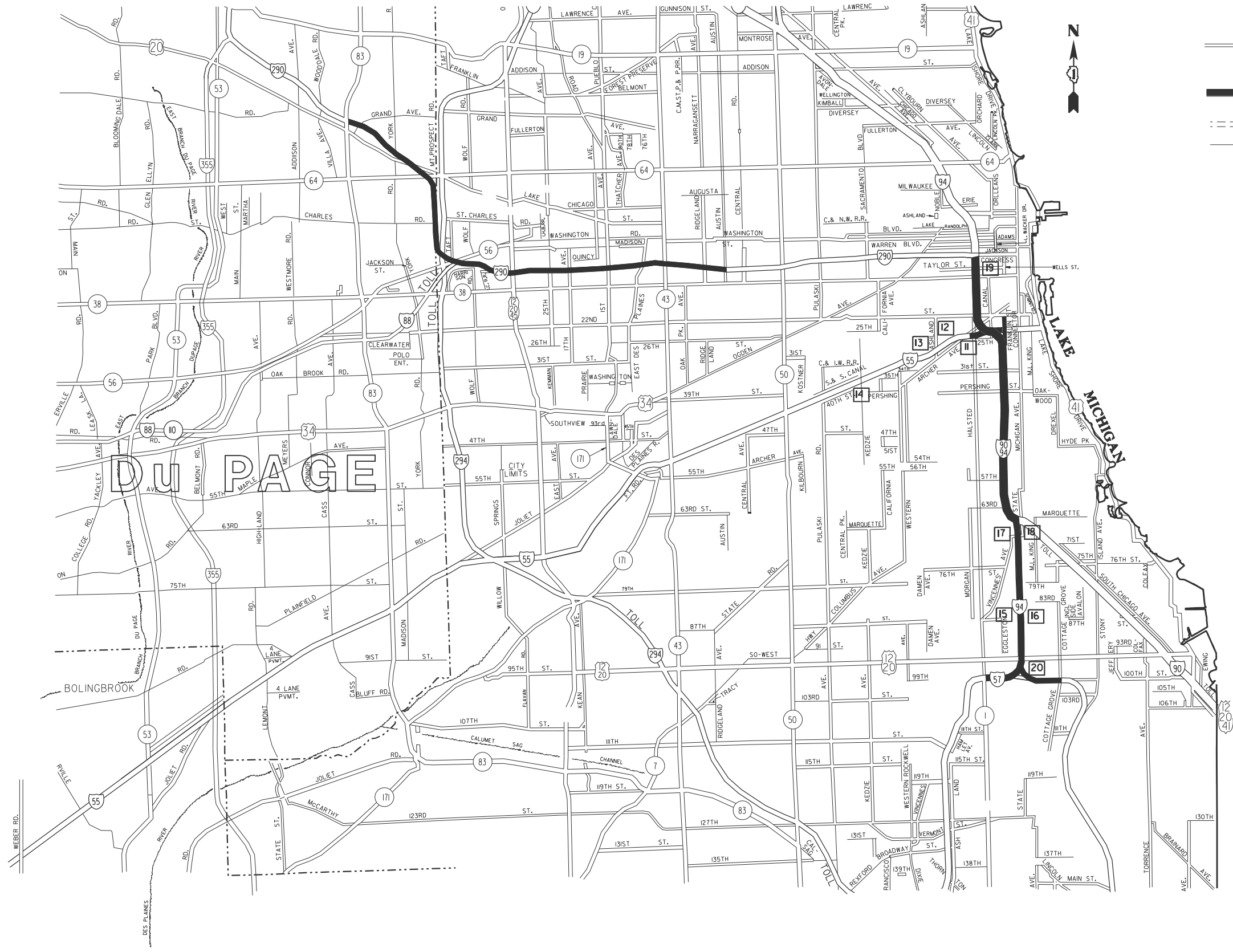
**STATE OF ILLINOIS
DEPARTMENT OF TRANSPORTATION**

**EXPRESSWAY CLEANING LOCATION MAP
I-90, I-90/94, I-190 (KENNEDY EXPY)**

SCALE: SHEET 1 OF 3 SHEETS STA. TO STA.

F.A. RTE.	SECTION	COUNTY	TOTAL SHEETS	SHEET NO.
VAR	2025-2128-SWP(EXPNT)	*VARIOUS	11	6
CONTRACT NO. 80C91				

**VARIOUS ILLINOIS FED. AID PROJECT *COOK, DUPAGE, & WILL



- DISTRICT NO. 1**
- STATE HIGHWAYS & EXPRESSWAYS WITHIN STATE JURISDICTION (EXCEPT TOLLWAYS)
 - STATE HIGHWAYS & EXPRESSWAYS TO BE CLEANED
 - FUTURE HIGHWAYS
 - VARIOUS AGENCIES HIGHWAYS

NIGHT CLEANING ONLY

Eisenhower Expressway (I-290)
 Interstate 290 from Austin Blvd. to IL-63 left hand side only.

Dan Ryan (I-90/94)
 Interstate 94 from Interstate 290 to Cottage Grove Avenue, all ramps from the Jane Byrne Circle Interchange at the Eisenhower Expressway to 31st St. all slip ramps between local and express lanes, Interstate 57 from Interstate 94 to Halsted Street left hand side only, the Franklin Street connector (Chinatown Feeder) from 22nd Street to Interstate 94, interchange with Interstate 55 (Stevenson) and Franklin Street Connector.

Exclusions: The right hand side of local and express lanes and all ramps from Cottage Grove to 31st St.

MODEL: Eisenhower and Dan Ryan (Sheet)
 FILE NAME: c:\pwworking\illinois.gov\118226-sh-1-details.dgn

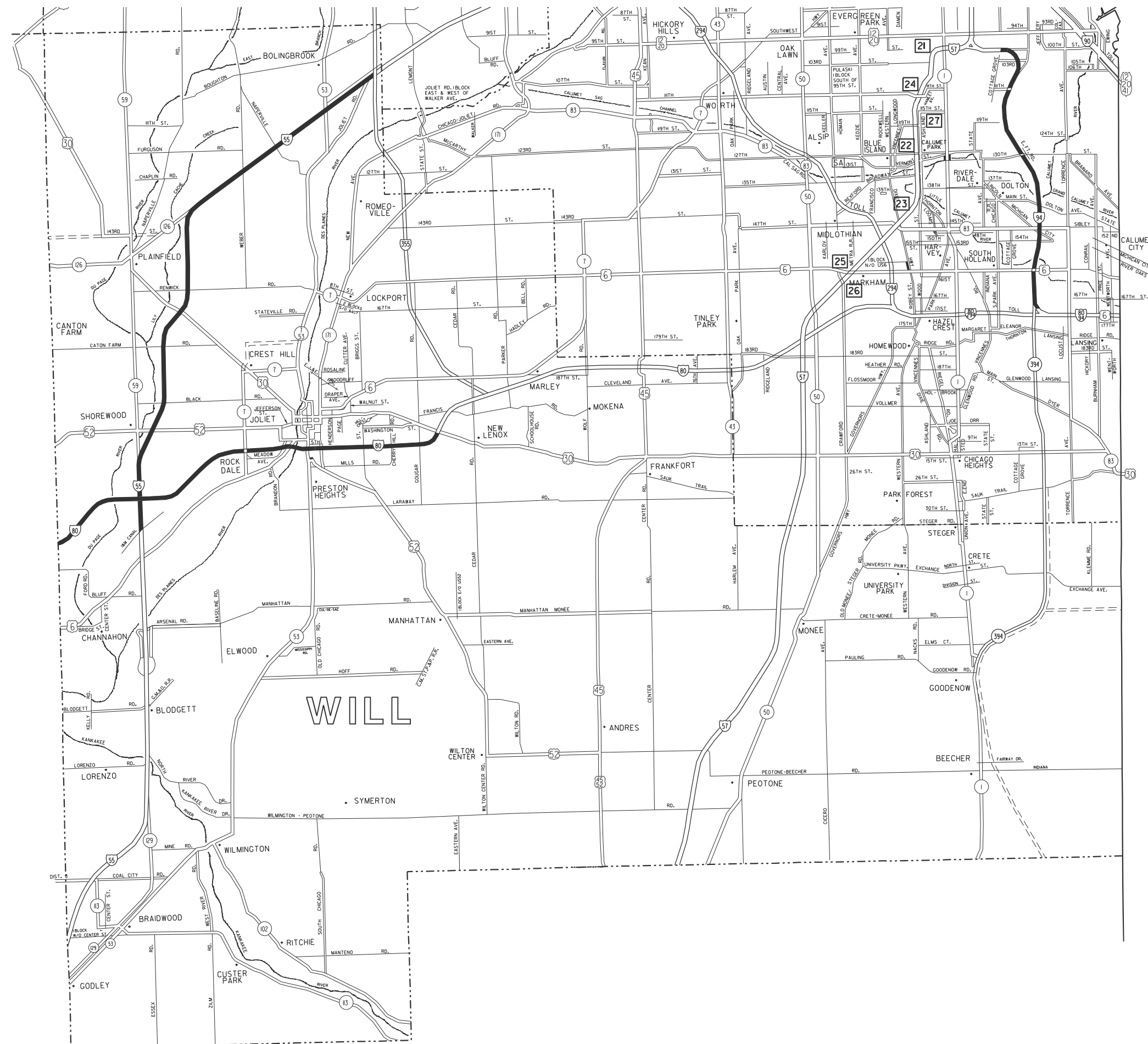
USER NAME	= thanh.vo	DESIGNED	-	REVISED	-
		DRAWN	-	REVISED	-
		CHECKED	-	REVISED	-
PLOT DATE	12/5/2025	DATE	-	REVISED	-

**STATE OF ILLINOIS
 DEPARTMENT OF TRANSPORTATION**

**EXPRESSWAY CLEANING LOCATION MAP
 I-290 (EISENHOWER EXPY) AND I-90/94 (DAN RYAN EXPY)**

SCALE: SHEET 2 OF 3 SHEETS STA. TO STA.

F.A. ** RTE.	SECTION	COUNTY	TOTAL SHEETS	SHEET NO.
VAR	2025-2128-SWP(EXPNT)	*VARIOUS	11	7
CONTRACT NO. 80C91				



NIGHT CLEANING ONLY

Bishop Ford Expressway
Interstate 94 from Cottage Grove Ave. to 171st St.
northbound and southbounds left hand side only.

I-80 Expressway
Interstate 80 from US 30 to Will-Kendall County Line both
sides and ramps

I-55 Expressway
Interstate 55 from I-355 to I&M Canal, left side only.

INDIANA

- DISTRICT NO. 1**
- STATE HIGHWAYS & EXPRESSWAYS WITHIN STATE JURISDICTION (EXCEPT TOLLWAYS)
 - STATE HIGHWAYS & EXPRESSWAYS TO BE CLEANED
 - FUTURE HIGHWAYS
 - VARIOUS AGENCIES HIGHWAYS

MODEL: BISHOP FORD I-55 AND I-80 (Sheet)
FILE NAME: c:\p\work\willcounty\118226-shh-details.dgn

USER NAME =	thanh.vo	DESIGNED -	REVISD -
		DRAWN -	REVISD -
		CHECKED -	REVISD -
PLOT DATE =	12/5/2025	DATE -	REVISD -

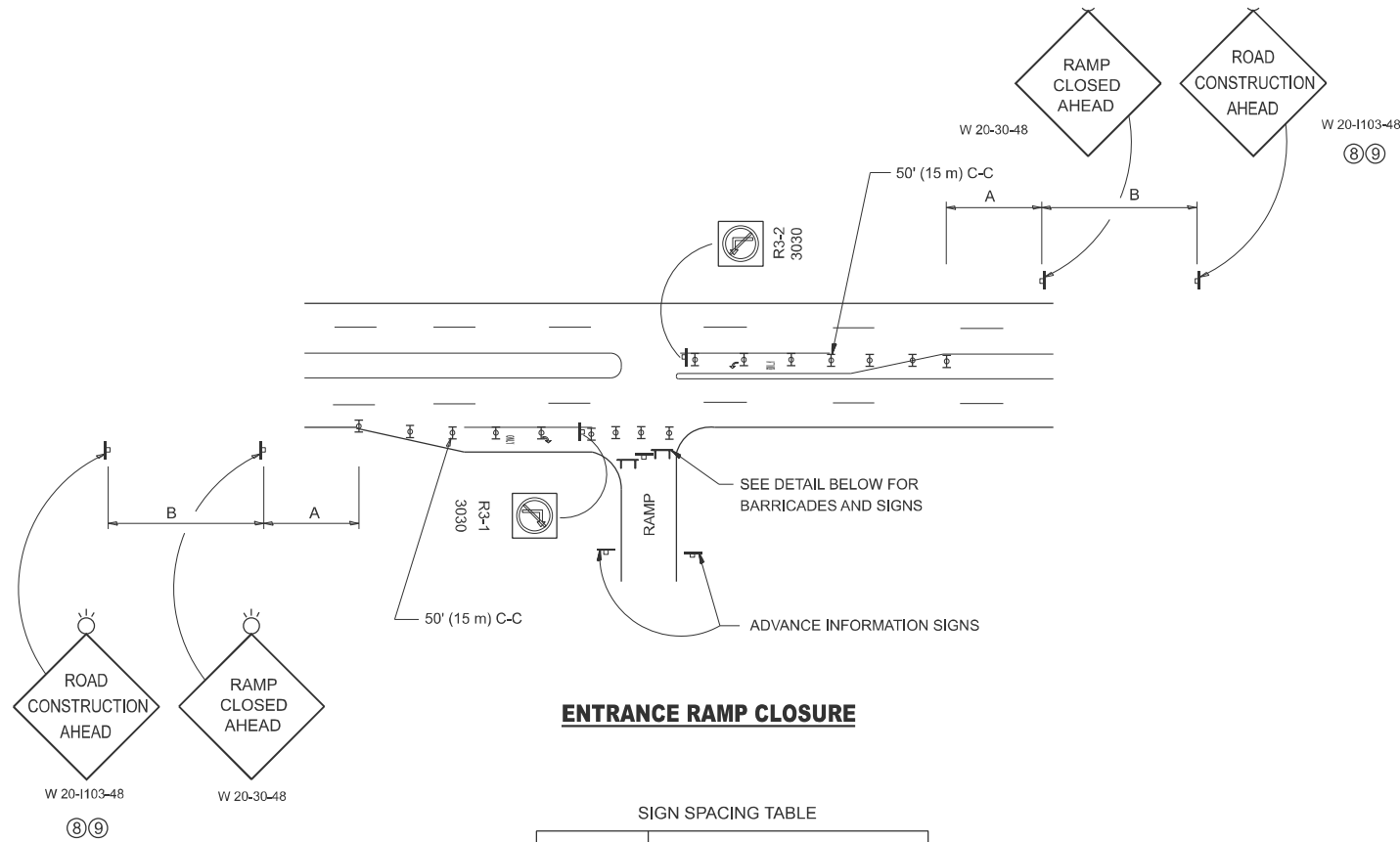
**STATE OF ILLINOIS
DEPARTMENT OF TRANSPORTATION**

**EXPRESSWAY CLEANING LOCATION MAP
I-94 (BISHOP FORD EXPY), I-55, & I-80**

SCALE: SHEET 3 OF 3 SHEETS STA. TO STA.

F.A. RTE.	SECTION	COUNTY	TOTAL SHEETS	SHEET NO.
VAR	2025-2128-SWP(EXPNT)	*VARIOUS	11	8
CONTRACT NO. 80C91				

**VARIOUS ILLINOIS FED. AID PROJECT **COOK, DUPAGE, & WILL

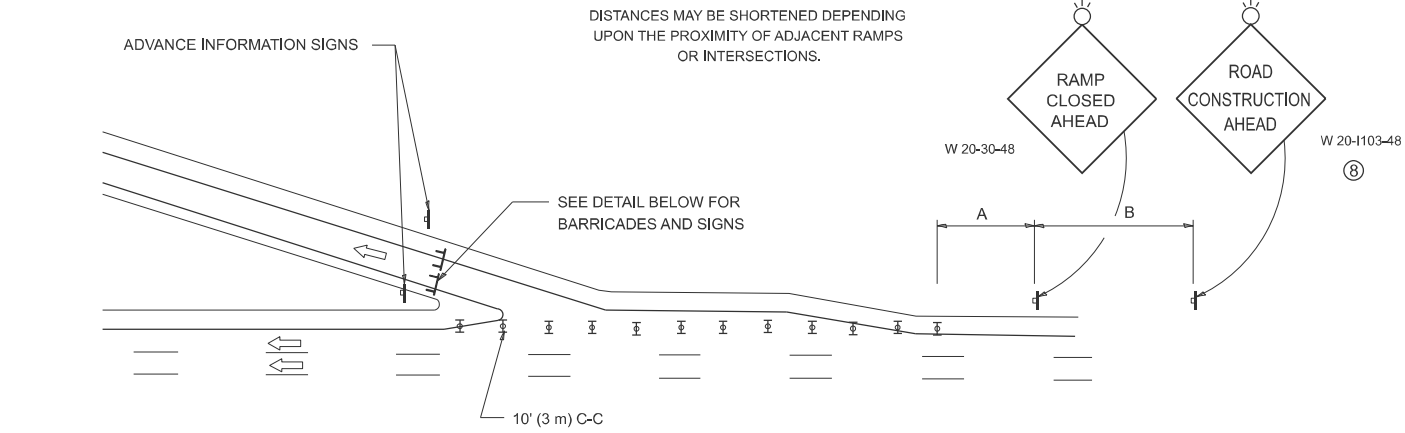


ENTRANCE RAMP CLOSURE

SIGN SPACING TABLE

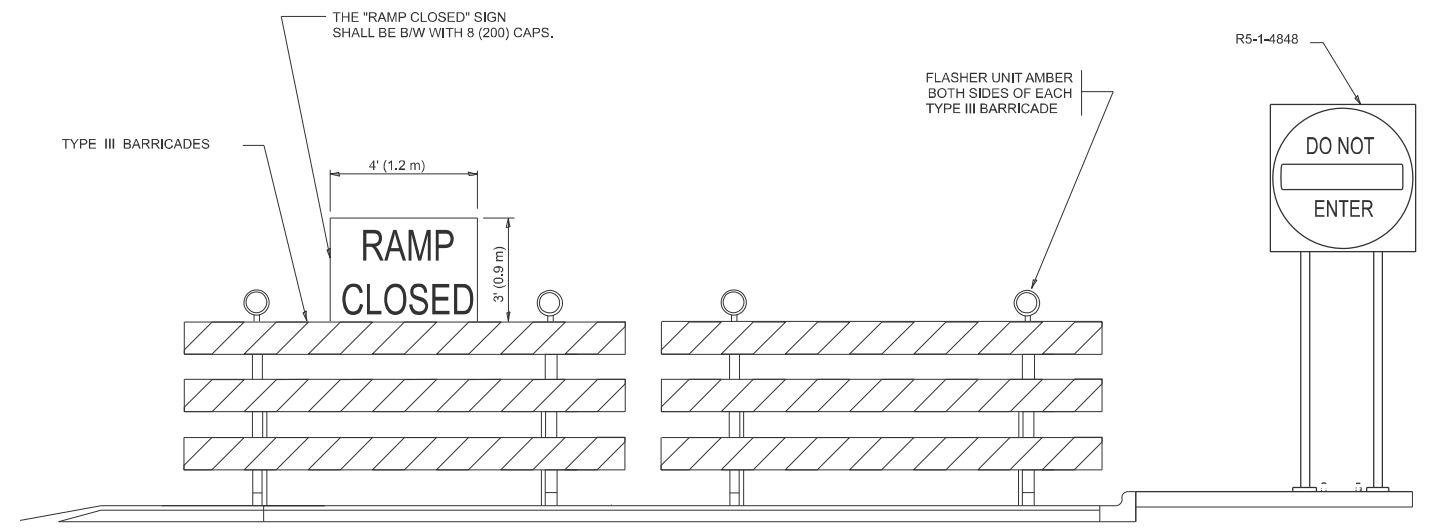
FACILITY	DISTANCE BETWEEN SIGNS	
	A	B
EXPRESSWAY >24 HOURS	1000' (300 m)	1500' (450 m)
EXPRESSWAY ≤24 HOURS	500' (150 m)	500' (150 m)
ARTERIAL 55 MPH	500' (150 m)	500' (150 m)
ARTERIAL 50-45 MPH	350' (100 m)	350' (100 m)
ARTERIAL <45 MPH	200' (60 m)	200' (60 m)

DISTANCES MAY BE SHORTENED DEPENDING UPON THE PROXIMITY OF ADJACENT RAMPS OR INTERSECTIONS.



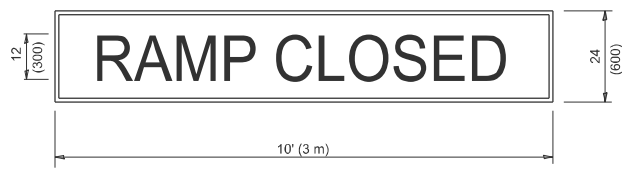
EXIT RAMP CLOSURE

- SYMBOLS**
- II TYPE II BARRICADE OR DRUM
 - III TYPE III BARRICADE WITH 2 FLASHING LIGHTS



DETAIL FOR REQUIRED BARRICADES & SIGNS

RAMP CLOSURE ADVANCE WARNING SIGN

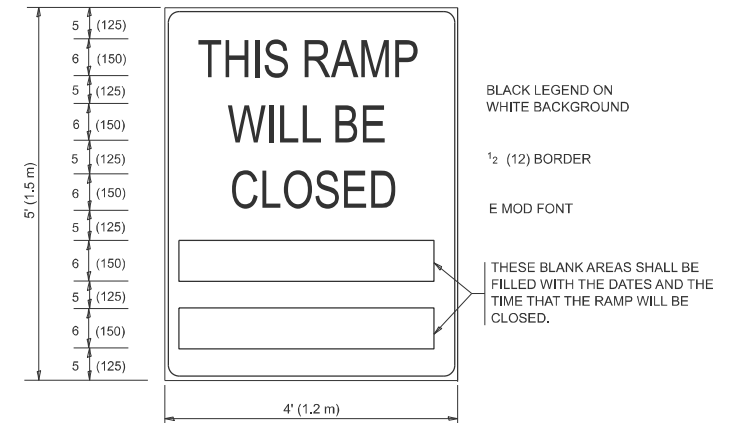


BLACK LEGEND ON ORANGE BACKGROUND MOUNTED DIAGONALLY
E MOD FONT
1 (25) BORDER

THESE SIGNS ARE REQUIRED ON ALL THE EXIT GUIDE SIGNS FOR EXIT RAMPS THAT WILL BE CLOSED FOR MORE THAN FOUR (4) CONSECUTIVE DAYS.

THESE SIGNS ARE REQUIRED ON BOTH SIDES OF THE RAMP, MINIMUM OF 1 WEEK IN ADVANCE OF THE CLOSURE.
THESE SIGNS SHALL BE FABRICATED AND PAID FOR ACCORDING TO THE TEMPORARY INFORMATION SIGNING SPECIAL PROVISION

RAMP CLOSURE ADVANCE INFORMATION SIGN



BLACK LEGEND ON WHITE BACKGROUND
1/2 (12) BORDER
E MOD FONT

THESE BLANK AREAS SHALL BE FILLED WITH THE DATES AND THE TIME THAT THE RAMP WILL BE CLOSED.

GENERAL NOTES:

- CONES MAY BE SUBSTITUTED FOR DRUMS OR TYPE II BARRICADES DURING DAY OPERATIONS. CONES SHALL BE A MINIMUM OF 28 (700) HIGH.
- VERTICAL BARRICADES SHALL NOT BE USED FOR RAMP CLOSURES.
- A FLAGGER SHALL BE POSITIONED AT EACH CLOSED RAMP THAT IS OPEN TO CONSTRUCTION VEHICLES, PRECEDED BY A W20-7 FLAGGER WARNING SIGN.
- ALL ROUTE MARKERS AND TRAILBLAZER ASSEMBLIES WHICH DIRECT MOTORISTS TO A CLOSED ENTRANCE RAMP SHALL BE COVERED WHEN THE RAMP IS CLOSED FOR MORE THAN FOUR (4) DAYS.
- THE SIGNING AND BARRICADING WHICH IS REQUIRED BY THIS DETAIL SHALL BE INCLUDED IN THE COST OF TRAFFIC CONTROL AND PROTECTION (EXPRESSWAYS).
- AUTHORIZATION FROM THE DISTRICT'S BUREAU OF TRAFFIC IS REQUIRED FOR ALL RAMP CLOSURES.
- THE RAMP CLOSURE ADVANCE INFORMATION SIGNS SHALL BE ERECTED IF THE CLOSURE TIME EXCEEDS TWENTY-FOUR (24) HOURS. ADDITIONAL ADVANCE WARNING SIGNS ON EXIT GUIDE SIGNING WILL BE REQUIRED FOR EXIT RAMP CLOSURES THAT EXCEED FOUR (4) DAYS IN LENGTH
- ROAD CONSTRUCTION AHEAD SIGNS MAY BE OMITTED WHEN THIS DETAIL IS USED IN CONJUNCTION WITH OTHER TRAFFIC CONTROL THAT ALREADY INCLUDES A ROAD CONSTRUCTION AHEAD SIGN.
- ARTERIAL ROAD CONSTRUCTION AHEAD SIGNS SHALL BE INSTALLED ON THE LEFT SIDE OF TRAFFIC IF THE MEDIAN IS MORE THAN 10 FT WIDE.

ALL DIMENSIONS ARE IN INCHES (MILLIMETERS) UNLESS OTHERWISE SHOWN.

MODEL: TC_08 (Sheet)
FILE NAME: c:\p\work\vw\thanh.vo\illmod\gov\1182722\118226-shr-Dist\Sts\Sts.dgn

USER NAME = thanh.vo	DESIGNED - D.W.S.	REVISED - S.P.B._12-09
	DRAWN - M.D._06-13	REVISED - M.D._06-13
	CHECKED -	REVISED - M.D._01-18
PLOT DATE = 12/5/2025	DATE - 02-83	REVISED - D.S._05-24

**STATE OF ILLINOIS
DEPARTMENT OF TRANSPORTATION**

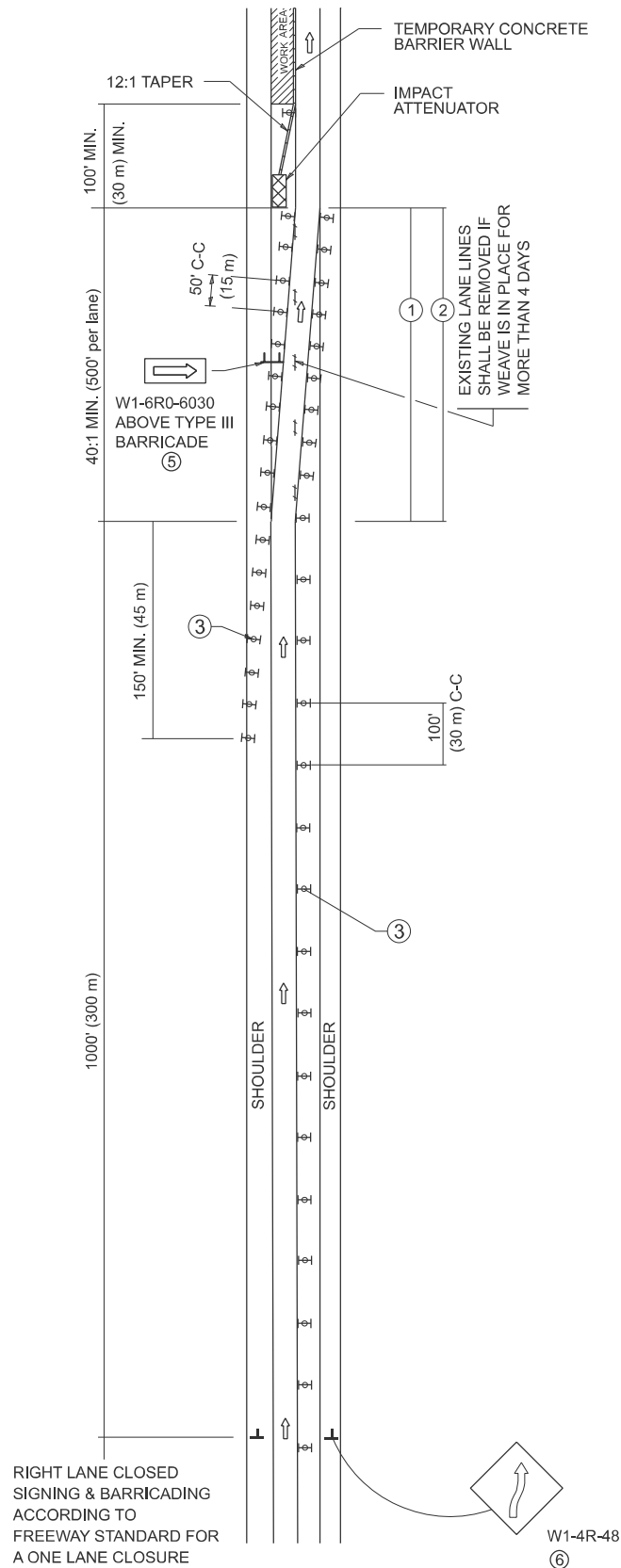
**ENTRANCE AND EXIT RAMP
CLOSURE DETAILS**

SCALE: NONE SHEET 1 OF 1 SHEETS STA. TO STA.

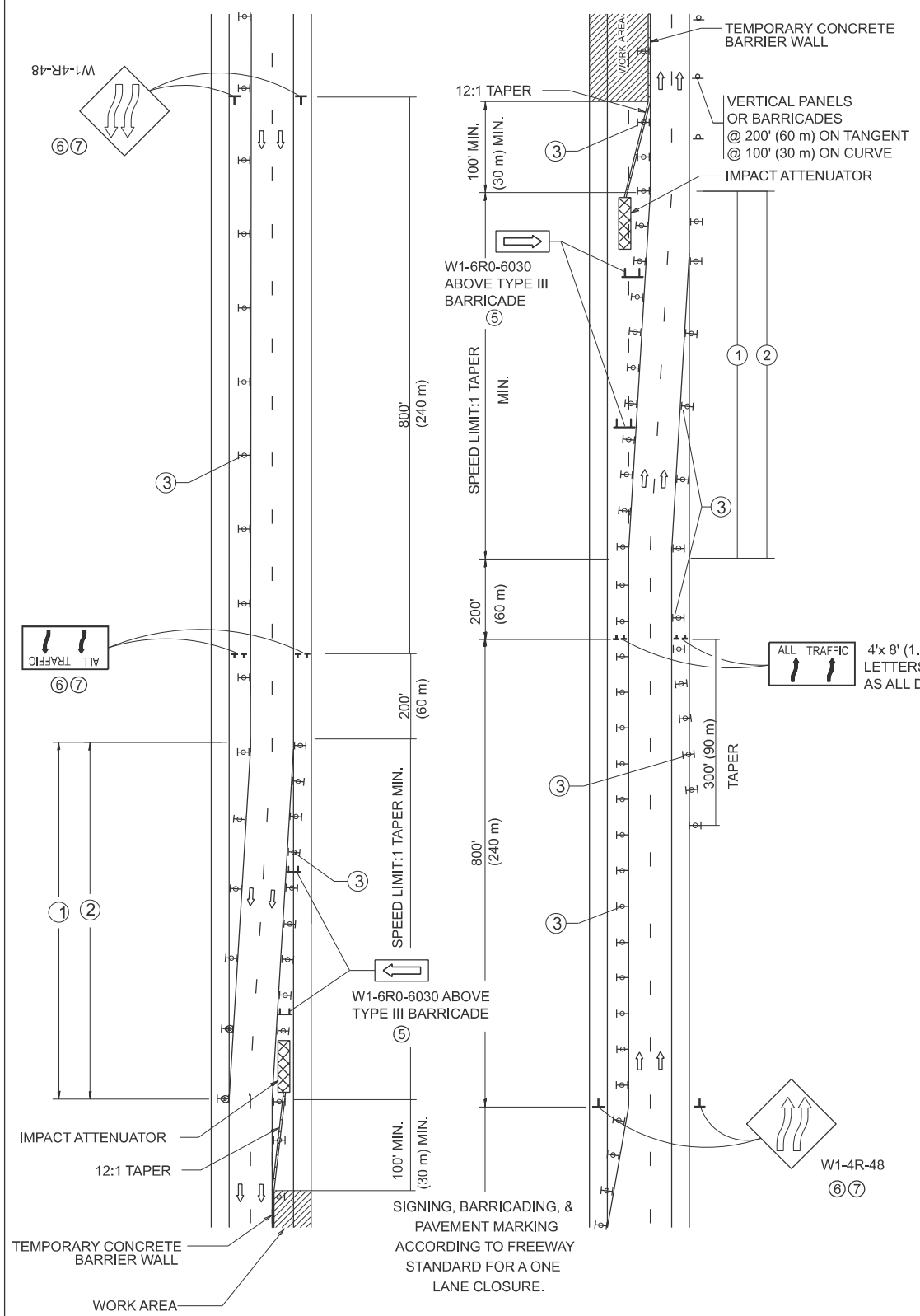
F.A. RTE.	SECTION	COUNTY	TOTAL SHEETS	SHEET NO.
VAR	2025-2128-SWP(EXPNT)	*VARIOUS	11	9
TC-08			CONTRACT NO. 80C91	

ILLINOIS FED. AID PROJECT **VARIOUS *COOK, DUPAGE, & WILL

SINGLE LANE WEAVE



MULTI-LANE WEAVE



GENERAL NOTES:

- ① EXISTING CONFLICTING PAVEMENT MARKING LINES SHALL BE REMOVED. PAVEMENT MARKING REMOVAL SHALL NOT BE REQUIRED FOR SINGLE LANE WEAVES UNDER 4 DAYS IN DURATION.
- ② CONTINUOUS REFLECTIVE TEMPORARY PAVEMENT MARKING TAPE SHALL BE PLACED THROUGHOUT THE TAPER AND FOR 300' (90 m) ALONG SIDE THE WORK AREA WHERE THE CLOSURE TIME IS GREATER THAN FOURTEEN DAYS. THE LEFT EDGE LINE SHALL BE YELLOW AND THE RIGHT EDGE LINE SHALL BE WHITE. FOR MULTI-LANE WEAVES LANE LINES SHALL BE 5 INCH, 10'-30' (3 m-9 m) SKIP DASH, WHITE.
- ③ PLASTIC DRUMS WITH STEADY BURN LIGHTS AT 50' (15 m) C-C SPACING IN TAPERS AND 100' (30 m) C-C SPACING IN TANGENTS.
- ④ ALL SIGNS SHALL BE POST MOUNTED IF THE CLOSURE TIME EXCEEDS FOUR DAYS.
- ⑤ TYPE III BARRICADES MAY BE OMITTED FOR SINGLE-LANE WEAVES UNDER 24-HOURS IN DURATION. W1-6 SIGNS WILL STILL BE REQUIRED. IF THE WIDTH OF OFFSET IS LESS THAN 6' THEN THE TYPE III BARRICADE WITH ATTACHED ARROW SIGN PANEL CAN BE ELIMINATED IN THE TAPER AREAS.
- ⑥ WHEN THE LENGTH OF THE SHIFTED SEGMENT (DISTANCE BETWEEN WEAVE POINTS) IS LESS THAN 1500', DOUBLE REVERSE CURVE SIGNS (W24-1) SHOULD BE USED INSTEAD OF THE REVERSE CURVE (W1-4) SIGNS. ARROWS ON THE 4'X8' "ALL TRAFFIC" SIGNS SHALL BE THE SAME SHAPE.
- ⑦ THE NUMBER OF ARROWS ON THESE SIGNS SHALL MATCH THE NUMBER OF LANES OPEN TO TRAFFIC.

ALL TRAFFIC 4'x 8' (1.2 m x 2.4 m); 1 (25) BORDER; 10 (250) CAPITAL LETTERS BACKGROUND SHEETING SHALL BE THE SAME AS ALL DIAMOND SHAPED CONSTRUCTION SIGNS.

SYMBOLS

- DIRECTION OF TRAFFIC
- WORK AREA
- SIGN ON PORTABLE OR PERMANENT SUPPORT
- TYPE II BARRICADE OR DRUM WITH MONO-DIRECTIONAL STEADY BURNING LIGHT
- TEMPORARY CONCRETE BARRIER WALL
- IMPACT ATTENUATOR
- W1-4R-48
- W24-1-48

ALL DIMENSIONS ARE IN INCHES (MILLIMETERS) UNLESS OTHERWISE SHOWN

MODEL: TC_09 (Sheet)
FILE NAME: c:\p\work\vw\182722\182722-D118226-shh-Dist\Sts.dgn

USER NAME = thanh.vo	DESIGNED - D.W.S.	REVISED - J.A.F. 02-06
	DRAWN -	REVISED - S.P.B. 01-07
	CHECKED -	REVISED - S.P.B. 12-09
PLOT DATE = 12/5/2025	DATE - 02-87	REVISED - M.D. 06-13

STATE OF ILLINOIS
DEPARTMENT OF TRANSPORTATION

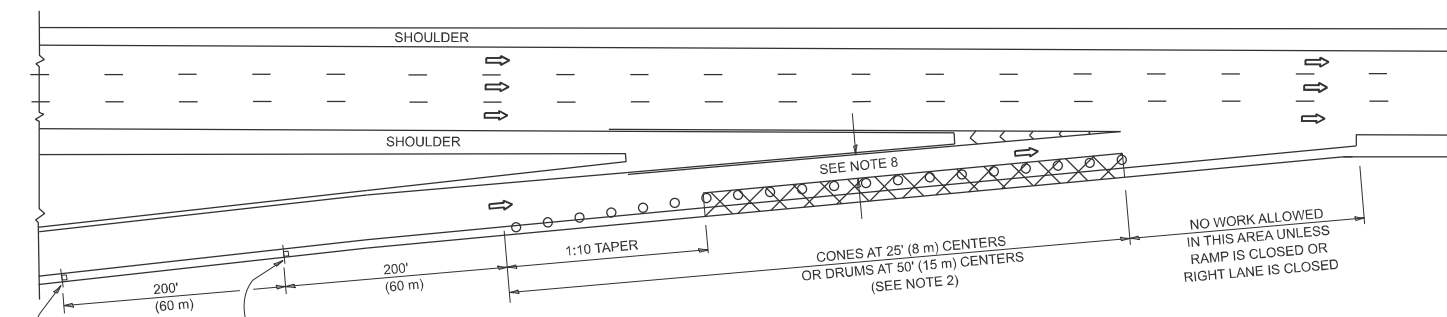
TRAFFIC CONTROL DETAILS FOR
FREEWAY SINGLE & MULTI-LANE WEAVE

SCALE: NONE SHEET 1 OF 8 SHEETS STA. TO STA.

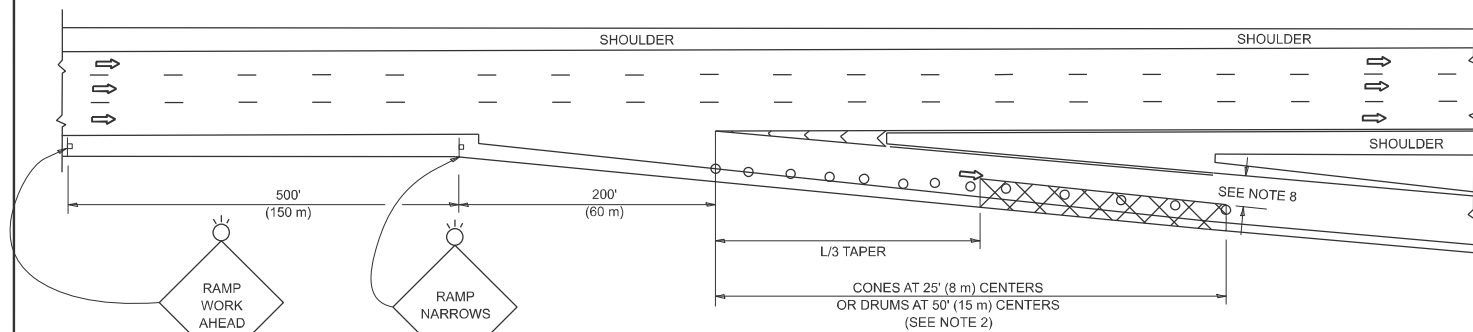
F.A. RTE.	SECTION	COUNTY	TOTAL SHEETS	SHEET NO.
VAR	2025-2128-SWP(EXPNT)	*VARIOUS	11	10
TC-09		CONTRACT NO. 80C91		

ILLINOIS FED. AID PROJECT **VARIOUS **COOK, DUPAGE, & WILL

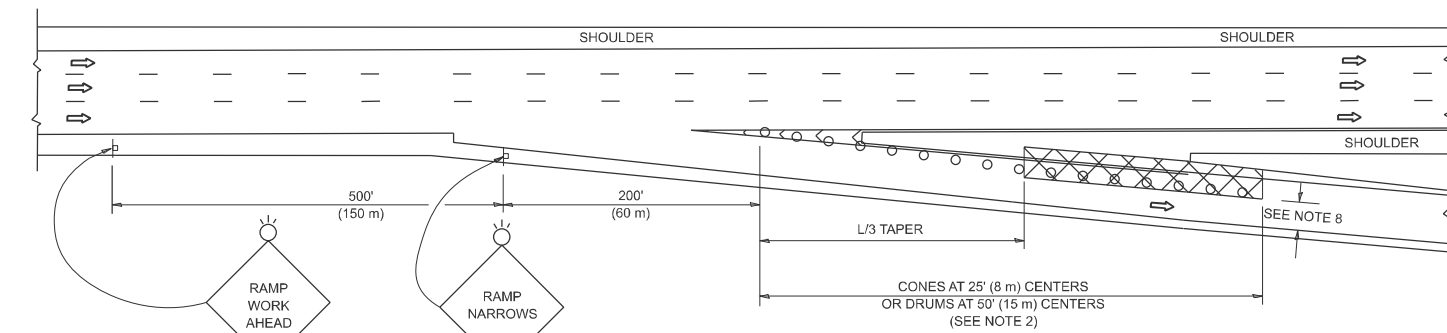
PARTIAL RAMP CLOSURE DETAILS



TYPICAL ENTRANCE RAMP



TYPICAL EXIT RAMP



TYPICAL EXIT RAMP

SYMBOLS

- ACTIVE WORK AREA
- SIGN ON PORTABLE OR PERMANENT SUPPORT
- FLAGGER WITH CONTROL SIGN
- TYPE II BARRICADE OR DRUM
- CONE, DRUM OR BARRICADE
- IMPACT ATTENUATOR OF TYPE AND TEST LEVEL SPECIFIED

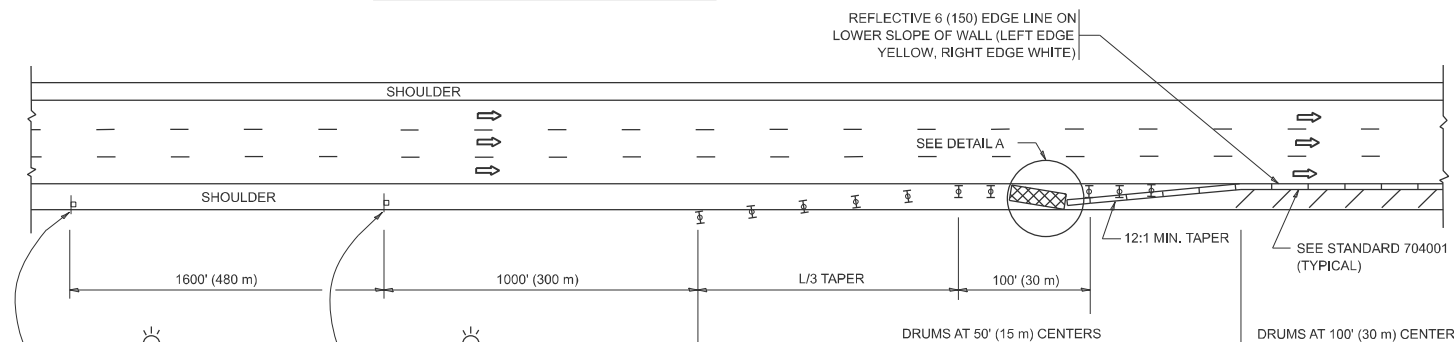
GENERAL NOTES:

- THE "L" DISTANCE EQUALS:

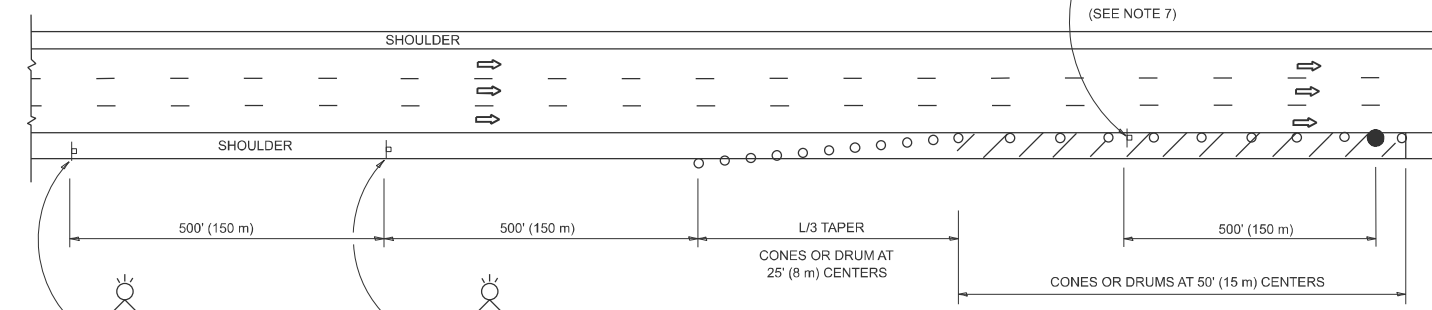
SPEED LIMIT	FORMULAS
45 mph (80 km/h)	METRIC ENGLISH
OR GREATER:	$L=0.65(W)(S)$ $L=(W)(S)$

W = WIDTH OF OFFSET IN FEET (METERS)
 S = NORMAL POSTED SPEED MPH (KM/H)
- TYPE II BARRICADES OR DRUMS ARE REQUIRED FOR ALL NIGHTTIME CLOSURES. TYPE II BARRICADES OR DRUMS WITH MONODIRECTIONAL STEADY BURN LIGHTS ARE REQUIRED FOR DELINEATING OBSTACLES, EXCAVATIONS, OR HAZARDS EXCEEDING 100 FT (30m) IN LENGTH AT NIGHT.
- ALL SIGNS SHALL BE POST MOUNTED IF THE CLOSURE TIME EXCEEDS FOUR DAYS.
- FLASHING LIGHTS SHALL BE USED DURING THE HOURS OF DARKNESS AND SHALL BE INSTALLED ABOVE THE FIRST TWO SETS OF SIGNS.

SHOULDER CLOSURE DETAILS

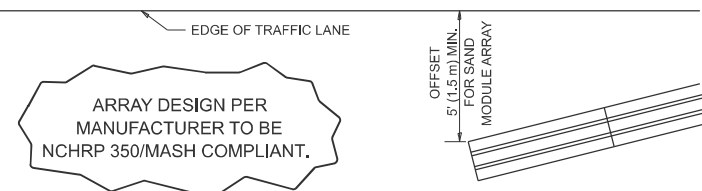


PERMANENT SHOULDER CLOSURE



TEMPORARY SHOULDER CLOSURE

- THIS DETAIL IS USED WHERE:
- VEHICLES, EQUIPMENT, WORKERS OR THEIR ACTIVITIES ENCR OACH IN AN AREA CLOSER THAN 15' (4.5 m) TO THE EDGE OF PAVEMENT FOR A PERIOD IN EXCESS OF 15 MINUTES.



**DETAIL "A"
IMPACT ATTENUATOR, TEMPORARY
(SEE NOTE 5)**

- THE IMPACT ATTENUATOR, TEMPORARY IS NOT REQUIRED WHEN THE TEMPORARY CONCRETE BARRIER WALL IS PROTECTED BY OR IS TIED INTO THE EXISTING GUARDRAIL. IF OFFSET IS LESS THAN 5 FEET USE NARROW USE TYPE DEVICE TO MEET NCHRP350/MASH.
- AUTHORIZATION FROM THE DISTRICT'S BUREAU OF TRAFFIC IS REQUIRED FOR ALL FREEWAY CLOSURES.
- THE FLAGGER AND FLAGGER SIGN ARE REQUIRED AT THE ABOVE WORK SITES WHEN:
 - FOUR OR MORE WORK VEHICLES ENTER THE TRAFFIC LANES IN A ONE HOUR PERIOD.
 - THE WORK ACTIVITY REQUIRES FREQUENT ENCR OACHMENT INTO THE LANE OPEN TO TRAFFIC.
 THE FLAGGER SHALL BE STATIONED APPROXIMATELY 100' (30 m) TO 200' (60 m) IN ADVANCE OF THE WORKERS.

- 12' MIN. WIDTH TANGENT SECTION
16' MIN. WIDTH CURVE SECTION.
- TEMPORARY SHOULDER AND NON-SYSTEM INTERCHANGE PARTIAL CLOSURES ARE ALLOWED WEEKDAYS BETWEEN 9:00 A.M. AND 3:00 P.M. AND BETWEEN 7:00 P.M. AND 5:00 A.M. OR AS APPROVED BY THE EXPRESSWAY TRAFFIC OPERATIONS ENGINEER. PERMANENT SHOULDER AND PARTIAL RAMP CLOSURES WILL ONLY BE PERMITTED IF CALLED FOR IN THE PLANS OR AS APPROVED BY THE EXPRESSWAY OPERATIONS ENGINEER.

ALL DIMENSIONS ARE IN INCHES (MILLIMETERS) UNLESS OTHERWISE SHOWN.

MODEL: TC_17 (Sheet)
 FILE NAME: c:\p\work\vw\illmod\182722\182722-shr-Dist-Stds.dgn

USER NAME = thanh.vo	DESIGNED -	REVISED - M.D. 06-13
	DRAWN - D.W.S.	REVISED - M.D. 01-18
	CHECKED -	REVISED - M.D. 10-20
PLOT DATE = 12/5/2025	DATE - 11-96	REVISED - D.S. 05-24

**STATE OF ILLINOIS
DEPARTMENT OF TRANSPORTATION**

**TRAFFIC CONTROL DETAILS FOR FREEWAY
SHOULDER CLOSURES AND PARTIAL RAMP CLOSURES**

SCALE: NONE SHEET 1 OF 1 SHEETS STA. TO STA.

F.A. RTE.	SECTION	COUNTY	TOTAL SHEETS	SHEET NO.
VAR	2025-2128-SWP(EXPNT)	*VARIOUS	11	11
TC-17			CONTRACT NO. 80C91	

ILLINOIS FED. AID PROJECT **VARIOUS **COOK, DUPAGE, & WILL