

STATE OF ILLINOIS  
DEPARTMENT OF TRANSPORTATION

F.A.I. RTE.	SECTION	COUNTY	TOTAL SHEETS	SHEET NO.
57	2025-2030-LR	ILLINOIS	5	1
ILLINOIS			CONTRACT NO. 80B84	
			COOK & WILL	

FAI 94 /FAP 341 /FAI 1574 /FAI 394

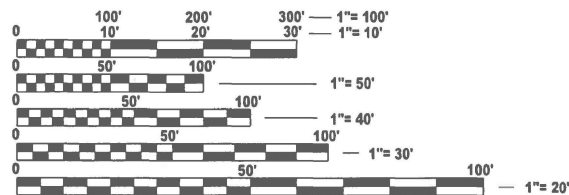
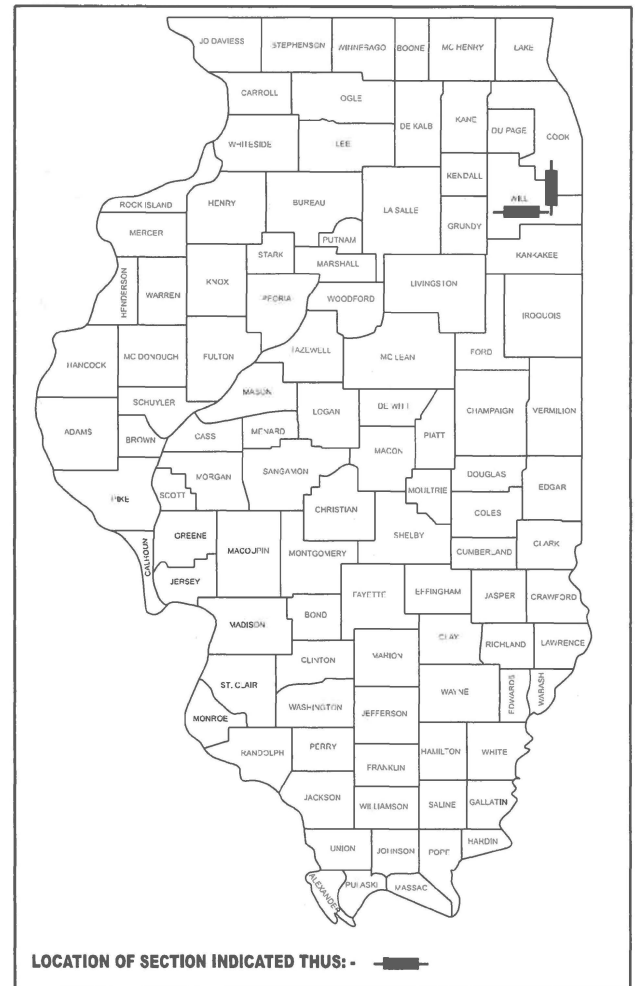
D-91-037-26

FOR INDEX OF SHEETS, SEE SHEET NO. 2

PROPOSED  
HIGHWAY PLANS

FAI ROUTE 57 (I-57 (DAN RYAN EXPWY))  
I-90/94 (DAN RYAN EXPWY) TO WILL/KANKAKEE COUNTY LINE  
SECTION 2025-2030-LR

EXPRESSWAY CLEANING (DEBRIS/LITTER REMOVAL)  
COOK AND WILL COUNTIES  
C-91-043-26



FULL SIZE PLANS HAVE BEEN PREPARED USING STANDARD ENGINEERING SCALES. REDUCED SIZED PLANS WILL NOT CONFORM TO STANDARD SCALES. IN MAKING MEASUREMENTS ON REDUCED PLANS, THE ABOVE SCALES MAY BE USED.

J.U.L.I.E.  
JOINT UTILITY LOCATION INFORMATION FOR EXCAVATION  
1-800-892-0123  
OR 811

PROJECT ENGINEER OSCAR OLIVEROS - (847) 705-4548  
PROJECT MANAGER JACEK EJMONT - (847) 705-4641

GROSS LENGTH = x.xx FT. = x.xxx MILE  
NET LENGTH = x.xx FT. = x.xxx MILE

CONTRACT NO. 80B84

STATE OF ILLINOIS  
DEPARTMENT OF TRANSPORTATION

SUBMITTED Dec 12 2025  
*Josef J. J...* REGIONAL ENGINEER

January 23 2026  
*Scott A. Etk...* ENGINEER OF DESIGN AND ENVIRONMENT

January 23 2026  
*John J. ...* DIRECTOR OF HIGHWAYS PROJECT IMPLEMENTATION

PRINTED BY THE AUTHORITY  
OF THE STATE OF ILLINOIS

## INDEX OF SHEETS

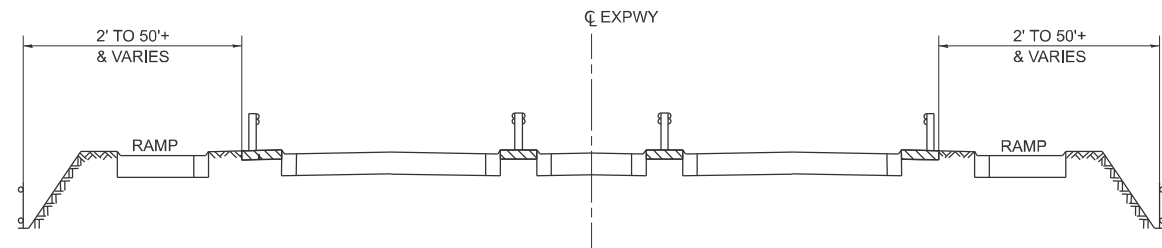
1. TITLE SHEET
2. INDEX OF SHEETS AND STATE STANDARDS
3. GENERAL NOTES, SUMMARY OF QUANTITIES, & TYPICAL EXPRESSWAY CROSS-SECTIONS
4. I-57 EXPRESSWAY CLEANING LOCATION MAP
5. TRAFFIC CONTROL DETAILS FOR FREEWAY SHOULDER CLOSURES AND PARTIAL RAMP CLOSURES (TC-17)

## STATE STANDARDS

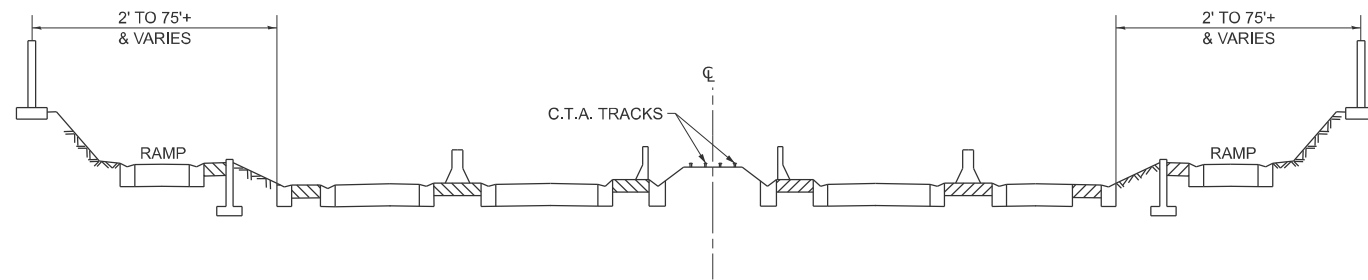
- 701106-02 OFF-ROAD OPERATION MULTILANE, MORE THAN 15' AWAY
- 701426-09 LANE CLOSURE, MULTILANE, INTERMITTENT OR MOVING OPER., FOR SPEEDS  $\geq$  45 MPH
- 701901-11 TRAFFIC CONTROL DEVICES

MODEL: GenNote01 [Sheet]  
 FILE NAME: c:\p\work\pwr\thanh.vo@illinois.gov\1168563\103726-shr-gennote.dgn

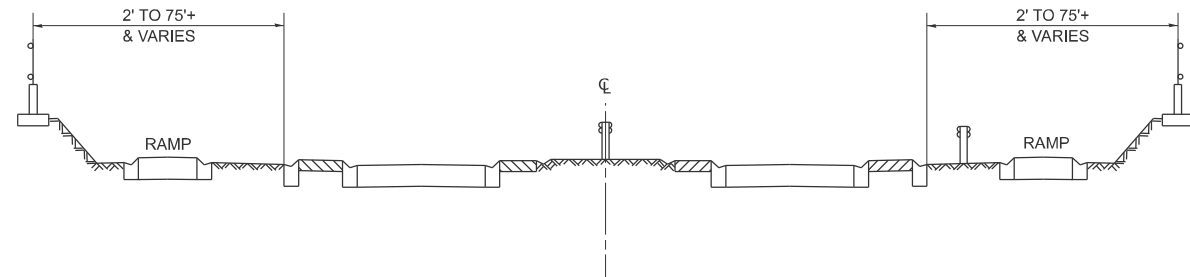
USER NAME = thanh.vo	DESIGNED -	REVISED -	<b>STATE OF ILLINOIS DEPARTMENT OF TRANSPORTATION</b>	<b>INDEX OF SHEETS AND STATE STANDARDS</b>	F.A.I RTE.	SECTION	COUNTY	TOTAL SHEETS	SHEET NO.	
	DRAWN -	REVISED -			57	2025-2030-LR	*	5	2	
	CHECKED -	REVISED -			CONTRACT NO. 80B84					
PLOT DATE = 10/7/2025	DATE -	REVISED -			SCALE:	SHEET 1	OF 1	SHEETS	STA.	TO STA.
				ILLINOIS   FED. AID PROJECT						
				FAI 94/FAP 341/ FAI 1574/FAI 394						
				COOK & WILL						



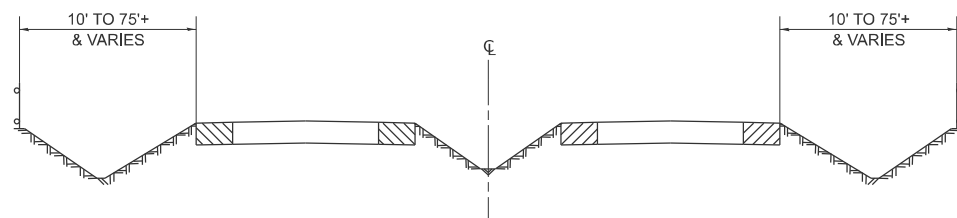
**TYPICAL EXPRESSWAY CROSS-SECTION NO. 1**



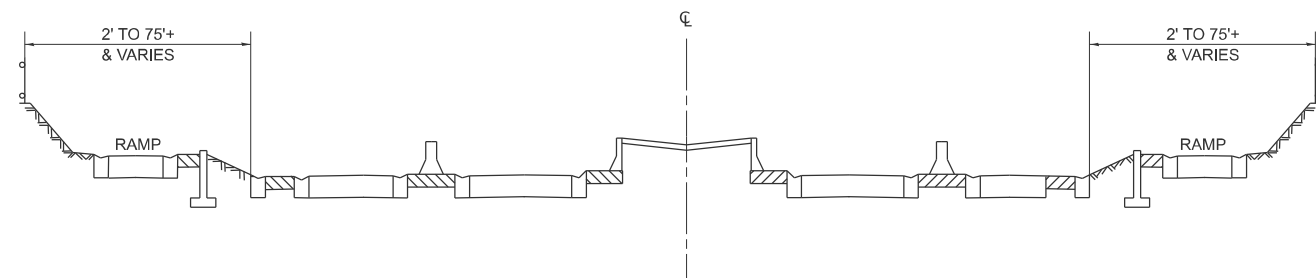
**TYPICAL EXPRESSWAY CROSS-SECTION NO. 2**



**TYPICAL EXPRESSWAY CROSS-SECTION NO. 3**



**TYPICAL EXPRESSWAY CROSS-SECTION NO. 4**



**TYPICAL EXPRESSWAY CROSS-SECTION NO. 5**

**NOTES:**

1. SCHEDULE MAY VARY AS DIRECTED BY THE ENGINEER.
2. NO DAILY CONTRACTOR WORK REQUESTS/SCHEDULING SHALL BE AUTHORIZED OR APPROVED TO START WHEN IT IS DETERMINED BY THE ENGINEER THAT WEATHER CONDITIONS WILL BE UNFAVORABLE. APPROVAL OF DAILY CONTRACTOR WORK SCHEDULE REQUEST SHALL BE SOLELY DETERMINED BY THE ENGINEER.
3. ALL SHOULDER CLOSURES SHALL BE IMMEDIATELY REMOVED DURING ALL ADVERSE WEATHER CONDITIONS WITHOUT EXCEPTION, INCLUDING BUT NOT LIMITED TO RAIN, WET ROAD SURFACE (SPRAY FROM TIRES), MIST, DRIZZLE, SLEET, SNOW, FOG AND ANY OTHER CIRCUMSTANCE DETERMINED UNSAFE BY THE ENGINEER. THE CONTRACTOR SHALL IMPLEMENT THIS CONTRACT REQUIREMENT IMMEDIATELY WITHOUT WAITING FOR DEPARTMENT'S INSTRUCTION.
4. NO WORK WILL BE ALLOWED ON THE FOLLOWING LEGAL HOLIDAYS UNLESS IT IS CONSIDERED AN EMERGENCY, IMMEDIATE HAZARD OR ANY WORK AS DESIGNATED BY THE DEPARTMENT THAT REQUIRES FIRST PRIORITY CORRECTIVE ACTION:

- EASTER HOLIDAY
- MEMORIAL DAY HOLIDAY
- INDEPENDENCE DAY HOLIDAY
- LABOR DAY HOLIDAY
- THANKSGIVING HOLIDAY
- CHRISTMAS HOLIDAY
- NEW YEARS HOLIDAY

**SUMMARY OF QUANTITIES**

CODE NO.	ITEM	UNIT	COOK		WILL
			URBAN	100 % STATE 0044	100 % STATE 0044
			TOTAL QUANTITIES	EXPRESSWAY	EXPRESSWAY
X0326643	LITTER PICKING	MILE	563.4	355.5	207.9

MODEL: TYP (Sheet)  
FILE NAME: c:\p\work\will\thanh.vo\illmod\gov\1168683\103726-shr-typical.dgn

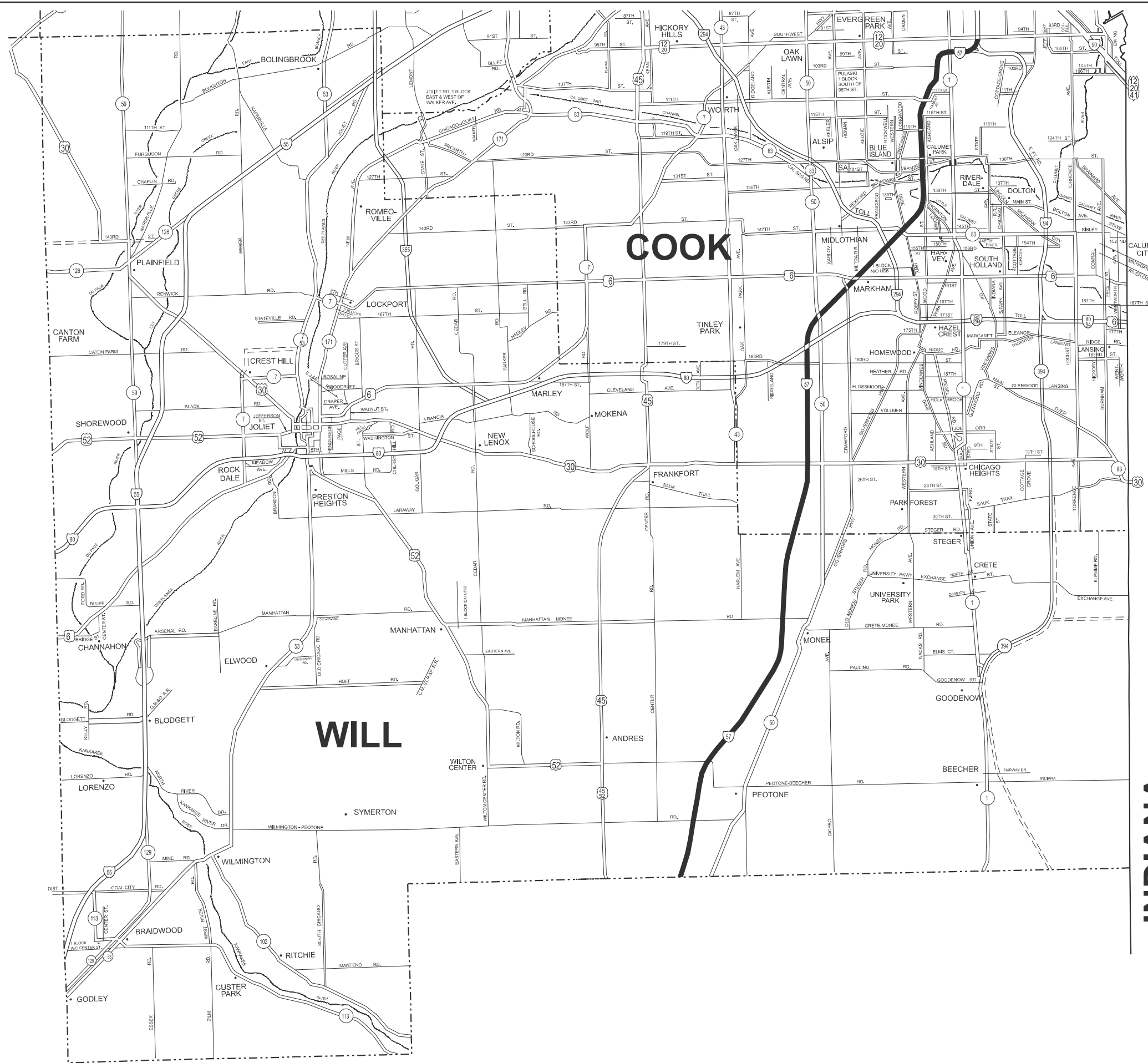
USER NAME = thanh.vo	DESIGNED -	REVISED -
	DRAWN -	REVISED -
	CHECKED -	REVISED -
PLOT DATE = 10/16/2025	DATE -	REVISED -

**STATE OF ILLINOIS  
DEPARTMENT OF TRANSPORTATION**

**GENERAL NOTES, SUMMARY OF QUANTITIES, &  
TYPICAL EXPRESSWAY CROSS-SECTIONS**

SCALE: NONE SHEET 1 OF 1 SHEETS STA. TO STA.

F.A.I RTE.	SECTION	COUNTY	TOTAL SHEETS	SHEET NO.
57	2025-2030-LR	*	5	3
CONTRACT NO. 80B84				



**DISTRICT NO. 1**

- STATE HIGHWAYS & EXPRESSWAYS WITHIN STATE JURISDICTION (EXCEPT TOLLWAYS)
- STATE HIGHWAYS & EXPRESSWAYS TO BE CLEANED
- - - FUTURE HIGHWAYS
- VARIOUS AGENCIES HIGHWAYS

MODEL: MAPS (Sheet)  
 FILE NAME: c:\pwworking\willcounty\h.v.2\illmod\gov\1168563\103726-sh-detailed.dgn

USER NAME =	thanh.vo	DESIGNED -		REVISED -	
		DRAWN -		REVISED -	
		CHECKED -		REVISED -	
PLOT DATE =	10/7/2025	DATE -		REVISED -	

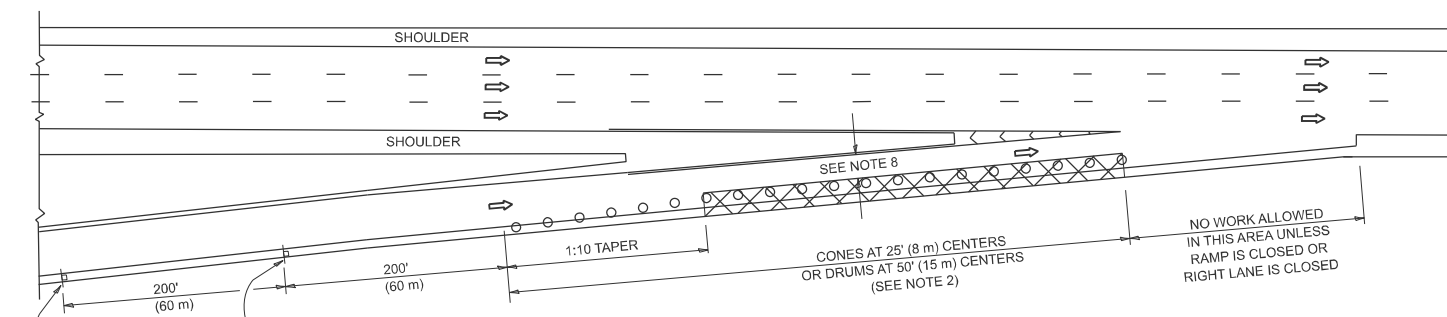
**STATE OF ILLINOIS  
DEPARTMENT OF TRANSPORTATION**

**I-57 EXPRESSWAY CLEANING LOCATION MAP**

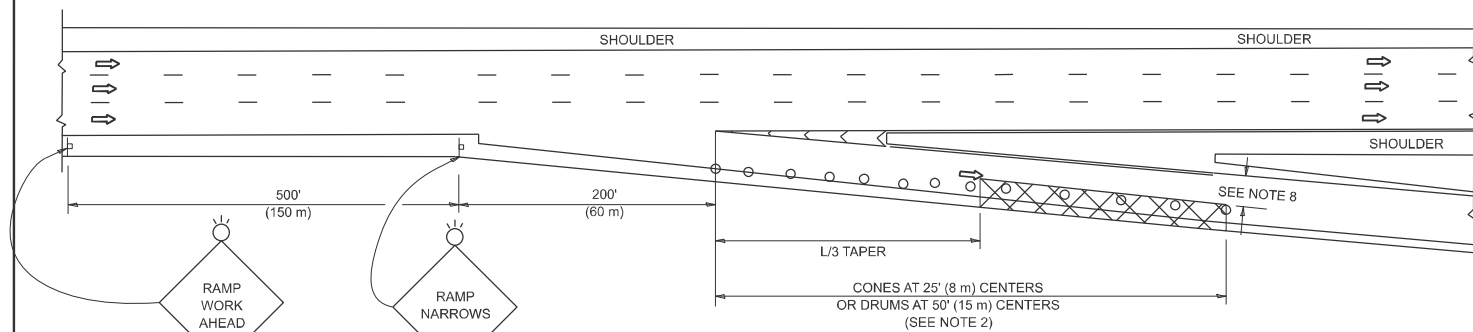
SCALE: NONE    SHEET 1 OF 1 SHEETS    STA.    TO STA.

F.A.I. RTE.	SECTION	COUNTY	TOTAL SHEETS	SHEET NO.
57	2025-2030-LR		5	4
CONTRACT NO. 80B84				
ILLINOIS FED. AID PROJECT				

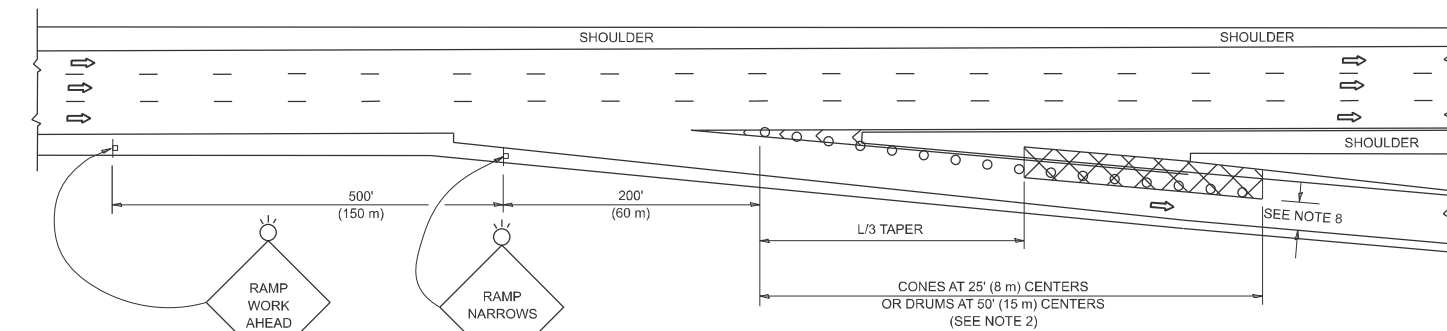
**PARTIAL RAMP CLOSURE DETAILS**



**TYPICAL ENTRANCE RAMP**



**TYPICAL EXIT RAMP**



**TYPICAL EXIT RAMP**

**SYMBOLS**

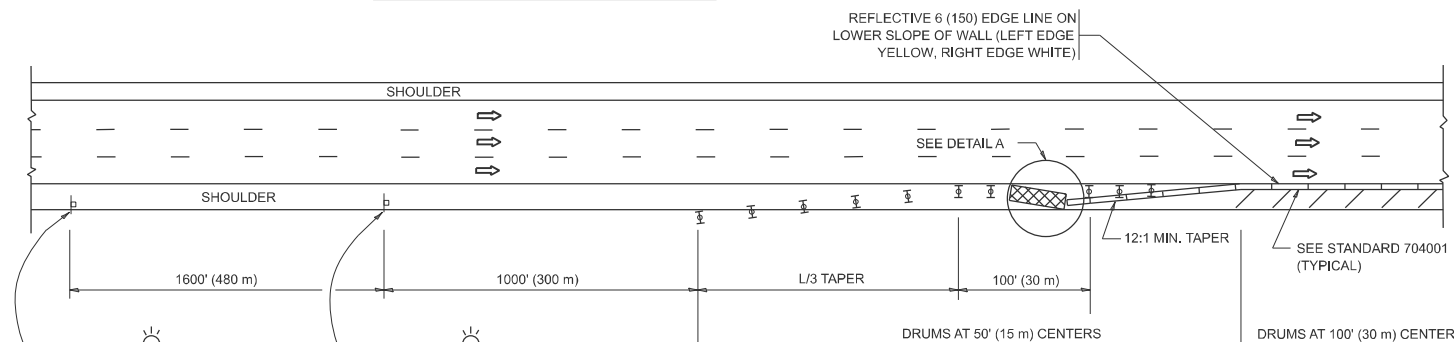
- ACTIVE WORK AREA
- SIGN ON PORTABLE OR PERMANENT SUPPORT
- FLAGGER WITH CONTROL SIGN
- TYPE II BARRICADE OR DRUM
- CONE, DRUM OR BARRICADE
- IMPACT ATTENUATOR OF TYPE AND TEST LEVEL SPECIFIED

**GENERAL NOTES:**

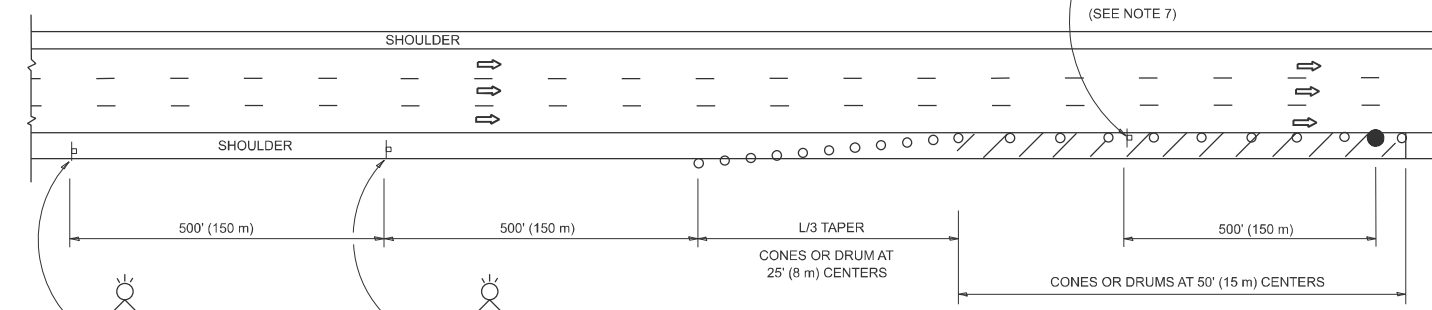
- THE "L" DISTANCE EQUALS:  

<b>SPEED LIMIT</b>	<b>FORMULAS</b>
45 mph (80 km/h) OR GREATER:	METRIC ENGLISH L=0.65(W)(S) L=(W)(S)
W = WIDTH OF OFFSET IN FEET (METERS)	
S = NORMAL POSTED SPEED MPH (KM/H)	
- TYPE II BARRICADES OR DRUMS ARE REQUIRED FOR ALL NIGHTTIME CLOSURES. TYPE II BARRICADES OR DRUMS WITH MONODIRECTIONAL STEADY BURN LIGHTS ARE REQUIRED FOR DELINEATING OBSTACLES, EXCAVATIONS, OR HAZARDS EXCEEDING 100 FT (30m) IN LENGTH AT NIGHT.
- ALL SIGNS SHALL BE POST MOUNTED IF THE CLOSURE TIME EXCEEDS FOUR DAYS.
- FLASHING LIGHTS SHALL BE USED DURING THE HOURS OF DARKNESS AND SHALL BE INSTALLED ABOVE THE FIRST TWO SETS OF SIGNS.

**SHOULDER CLOSURE DETAILS**

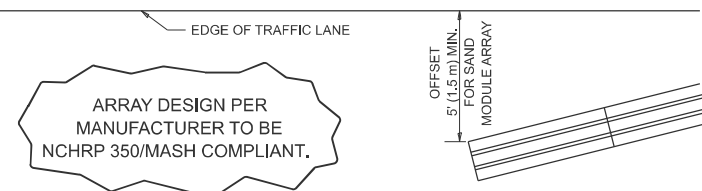


**PERMANENT SHOULDER CLOSURE**



**TEMPORARY SHOULDER CLOSURE**

THIS DETAIL IS USED WHERE:  
 1. VEHICLES, EQUIPMENT, WORKERS OR THEIR ACTIVITIES ENCR OACH IN AN AREA CLOSER THAN 15' (4.5 m) TO THE EDGE OF PAVEMENT FOR A PERIOD IN EXCESS OF 15 MINUTES.



**DETAIL "A"  
IMPACT ATTENUATOR, TEMPORARY  
(SEE NOTE 5)**

- THE IMPACT ATTENUATOR, TEMPORARY IS NOT REQUIRED WHEN THE TEMPORARY CONCRETE BARRIER WALL IS PROTECTED BY OR IS TIED INTO THE EXISTING GUARDRAIL. IF OFFSET IS LESS THAN 5 FEET USE NARROW USE TYPE DEVICE TO MEET NCHRP350/MASH.
- AUTHORIZATION FROM THE DISTRICT'S BUREAU OF TRAFFIC IS REQUIRED FOR ALL FREEWAY CLOSURES.
- THE FLAGGER AND FLAGGER SIGN ARE REQUIRED AT THE ABOVE WORK SITES WHEN:  
 a. FOUR OR MORE WORK VEHICLES ENTER THE TRAFFIC LANES IN A ONE HOUR PERIOD.  
 b. THE WORK ACTIVITY REQUIRES FREQUENT ENCR OACHMENT INTO THE LANE OPEN TO TRAFFIC.  
 THE FLAGGER SHALL BE STATIONED APPROXIMATELY 100' (30 m) TO 200' (60 m) IN ADVANCE OF THE WORKERS.

8. 12' MIN. WIDTH TANGENT SECTION  
16' MIN. WIDTH CURVE SECTION.

9. TEMPORARY SHOULDER AND NON-SYSTEM INTERCHANGE PARTIAL CLOSURES ARE ALLOWED WEEKDAYS BETWEEN 9:00 A.M. AND 3:00 P.M. AND BETWEEN 7:00 P.M. AND 5:00 A.M. OR AS APPROVED BY THE EXPRESSWAY TRAFFIC OPERATIONS ENGINEER. PERMANENT SHOULDER AND PARTIAL RAMP CLOSURES WILL ONLY BE PERMITTED IF CALLED FOR IN THE PLANS OR AS APPROVED BY THE EXPRESSWAY OPERATIONS ENGINEER.

ALL DIMENSIONS ARE IN INCHES (MILLIMETERS) UNLESS OTHERWISE SHOWN.

MODEL: TC17 (Sheet)  
 FILE NAME: c:\p\work\wv\illmod\168563\103726-shl-Dist-DistSigs.dgn

USER NAME = thanh.vo	DESIGNED -	REVISED - M.D. 06-13
	DRAWN - D.W.S.	REVISED - M.D. 01-18
	CHECKED -	REVISED - M.D. 10-20
PLOT DATE = 10/7/2025	DATE - 11-96	REVISED - D.S. 05-24

**STATE OF ILLINOIS  
DEPARTMENT OF TRANSPORTATION**

**TRAFFIC CONTROL DETAILS FOR FREEWAY  
SHOULDER CLOSURES AND PARTIAL RAMP CLOSURES**

SCALE: NONE SHEET 1 OF 1 SHEETS STA. TO STA.

F.A.I. RTE.	SECTION	COUNTY	TOTAL SHEETS	SHEET NO.
57	2025-2030-LR	*	5	5
<b>TC-17</b>		CONTRACT NO. 80B84		
ILLINOIS   FED. AID PROJECT				