

STATE OF ILLINOIS  
DEPARTMENT OF TRANSPORTATION

F.A. RTE.	SECTION	COUNTY	TOTAL SHEETS	SHEET NO.
**	2025-1078-FNC		22	1
		ILLINOIS	CONTRACT NO. 62Y37	
**VARIOUS		*COOK, DUPAGE, KANE, LAKE, MCHENRY, & WILL		

D-91-156-25



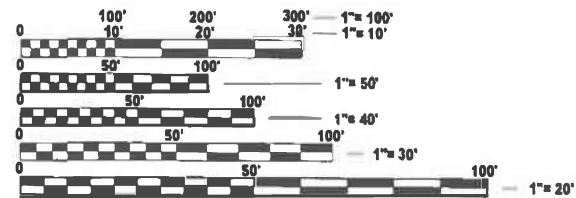
FOR INDEX OF SHEETS, SEE SHEET NO. 2

**PROPOSED  
HIGHWAY PLANS**

**ROUTE: VARIOUS EXPRESSWAYS AND ARTERIAL  
HIGHWAYS - DISTRICT ONE  
SECTION 2025-1078-FNC  
FENCE REPAIR  
COUNTY: VARIOUS**

C-91-233-25

**SEE LOCATION MAPS  
SHEETS 4 THRU 12**



FULL SIZE PLANS HAVE BEEN PREPARED USING STANDARD ENGINEERING SCALES. REDUCED SIZED PLANS WILL NOT CONFORM TO STANDARD SCALES. IN MAKING MEASUREMENTS ON REDUCED PLANS, THE ABOVE SCALES MAY BE USED.

J.U.L.I.E.  
JOINT UTILITY LOCATION INFORMATION FOR EXCAVATION  
1-800-892-0123  
OR 811

PROJECT ENGINEER: OSCAR OLIVEROS (847) 705-4548  
PROJECT MANAGER: JACEK EJMONT (847) 705-4641

CONTRACT NO. 62Y37

STATE OF ILLINOIS  
DEPARTMENT OF TRANSPORTATION

SUBMITTED Dec 15 20 25  
Jose Rios IR  
REGIONAL ENGINEER

January 23 20 26  
[Signature]  
ENGINEER OF DESIGN AND ENVIRONMENT

January 23 20 26  
[Signature] 5  
DIRECTOR OF HIGHWAYS PROJECT IMPLEMENTATION

**PRINTED BY THE AUTHORITY  
OF THE STATE OF ILLINOIS**

**INDEX OF SHEETS**

- 1 COVER SHEET
- 2 INDEX OF SHEETS, STATE STANDARDS, AND GENERAL NOTES
- 3 SUMMARY OF QUANTITIES
- 4 FENCE REPAIR LOCATION MAP COOK COUNTY (NORTH OF ILL 38)
- 5 FENCE REPAIR LOCATION MAP COOK COUNTY (SOUTH OF ILL 38)
- 6 FENCE REPAIR LOCATION MAP DUPAGE COUNTY (NORTH OF ILL 38)
- 7 FENCE REPAIR LOCATION MAP DUPAGE COUNTY (SOUTH OF ILL 38)
- 8 FENCE REPAIR LOCATION MAP KANE COUNTY (NORTH OF ILL 38)
- 9 FENCE REPAIR LOCATION MAP KANE COUNTY (SOUTH OF ILL 38)
- 10 FENCE REPAIR LOCATION MAP WILL COUNTY
- 11 FENCE REPAIR LOCATION MAP LAKE COUNTY
- 12 FENCE REPAIR LOCATION MAP MCHENRY COUNTY
- 13 DETAILS OF PEDESTRIAN BARRIER TYPE III (STD. 10-SS-514R)
- 14 CHAIN LINK FENCE (STD 10-SS-506B)
- 15 CHAIN LINK FENCE POST SLEEVE REPAIR DETAIL
- 16 PROPOSED PEDESTRIAN BARRIER AND CHAIN LINK FENCE WITH TENSION WIRE AND FENCE RAIL REMOVAL
- 17 SPECIAL FENCE DETAILS
- 18 ENTRANCE AND EXIT RAMP CLOSURE DETAILS (TC-08)
- 19 TRAFFIC CONTROL AND PROTECTION FOR SIDE ROADS, INTERSECTIONS AND DRIVEWAYS (TC-10)
- 20 TRAFFIC CONTROL AND PROTECTION AT TURN BAYS (TO REMAIN OPEN TO TRAFFIC) (TC-14)
- 21 TRAFFIC CONTROL DETAILS FOR FREEWAY SHOULDER CLOSURE AND PARTIAL RAMP CLOSURES (TC-17)
- 22 FREEWAY / EXPRESSWAY SIGNING FOR FLAGGING OPERATIONS AT WORK ZONE OPENINGS ON FREEWAYS / EXPRESSWAYS (TC-18)

**GENERAL NOTES**

- 1. BEFORE STARTING ANY EXCAVATION, THE CONTRACTOR SHALL CALL "J.U.L.I.E" AT (800) 892-0123 OR 811 FOR FIELD LOCATIONS OF BURIED ELECTRIC, TELEPHONE, AND GAS UTILITIES. 48-HOUR NOTIFICATION IS REQUIRED.
- \*2. THE CONTRACTOR SHALL CONTACT THE DISTRICT ONE TRAFFIC CONTROL SUPERVISOR AT (847) 705-4155 FOR EXPRESSWAYS AND KALPANA.KANNAN-HOSADURGA@ILLINOIS.GOV FOR ARTERIALS. A MINIMUM OF (72) HOURS IN ADVANCE OF BEGINNING WORK.
- 3. THE CONTRACTOR SHALL SUBMIT ALL DAILY LANE, RAMP, AND SHOULDER CLOSURES VIA WWW.IDOTLCS.COM AT LEAST (24) HOURS IN ADVANCE OF ALL DAILY LANE, AND RAMP AND SHOULDER CLOSURES. THE CONTRACTOR SHALL REQUEST AND GAIN THE APPROVAL FROM THE ILLINOIS DEPARTMENT OF TRANSPORTATION'S EXPRESSWAY TRAFFIC OPERATIONS ENGINEER AT (847) 705-4151 OR (847) 705-4155.

**STATE STANDARDS**

- 664001 – 02
- 665001 – 02
- \* 701001 – 02
- \* 701006 – 05
- \* 701101 – 05
- \* 701106 – 02
- \* 701201 – 05
- \* 701301 – 04
- \* 701306 – 04
- \* 701311 – 03
- \* 701336 – 07
- \* 701400 – 12
- \* 701401 – 13
- \* 701411 – 09
- \* 701421 – 08
- \* 701426 – 09
- \* 701427 – 05
- \* 701428 – 01
- \* 701501 – 06
- \* 701502 – 09
- \* 701601 – 09
- \* 701602 – 10
- \* 701606 – 10
- 701701 – 10
- 701801 – 06
- 701901 – 11

**DESCRIPTION**

- CHAIN LINK FENCE
- WOVEN WIRE FENCE
- OFF-ROAD OPERATIONS, 2L, 2W, MORE THAN 15' AWAY
- OFF-ROAD OPERATIONS, 2L, 2W, 15' TO 24' FROM PAVEMENT EDGE
- OFF-ROAD OPERATIONS, MULTILANE, 15' (4.5 M) TO 24" (600 MM) FROM PAVEMENT EDGE
- OFF-ROAD OPERATIONS, MULTILANE, MORE THAN 15' AWAY
- LANE CLOSURE, 2L, 2W, DAY ONLY, FOR SPEEDS ≥ 45 MPH
- LANE CLOSURE, 2L, 2W, SHORT TIME OPERATIONS
- LANE CLOSURE, 2L, 2W, SLOW MOVING OPERATIONS DAY ONLY, FOR SPEEDS ≥ 45 MPH
- LANE CLOSURE, 2L, 2W, MOVING OPERATIONS – DAY ONLY
- LANE CLOSURE, 2L, 2W, WORK AREAS IN SERIES, FOR SPEEDS ≥ 45 MPH
- APPROACH TO LANE CLOSURE, FREEWAY / EXPRESSWAY
- LANE CLOSURE, FREEWAY / EXPRESSWAY
- LANE CLOSURE, MULTILANE, AT ENTRANCE OR EXIT RAMP, FOR SPEEDS ≥ 45 MPH
- LANE CLOSURE, MULTILANE, DAY OPERATIONS ONLY, FOR SPEEDS ≥ 45 MPH TO 55 MPH
- LANE CLOSURE, MULTILANE, INTERMITTENT OF MOVING OPERATIONS, FOR SPEEDS ≥ 45 MPH
- LANE CLOSURE, MULTILANE, INTERMITTENT OR MOVING OPERATIONS, FOR SPEEDS ≤ 40 MPH
- TRAFFIC CONTROL SETUP AND REMOVAL FREEWAY / EXPRESSWAY
- URBAN LANE CLOSURE, 2L, 2W, UNDIVIDED
- URBAN LANE CLOSURE, 2L, 2W, WITH BIDIRECTIONAL LEFT TURN LANE
- URBAN LANE CLOSURE, MULTILANE, 1W OR 2W WITH NON-TRAVERSABLE MEDIAN
- URBAN LANE CLOSURE, MULTILANE, 2W WITH BI-DIRECTIONAL LEFT TURN LANE
- URBAN SINGLE LANE CLOSURE, MULTILANE, 2W WITH MOUNTABLE MEDIAN
- URBAN LANE CLOSURE, MULTILANE INTERSECTION
- SIDEWALK, CORNER OR CROSSWALK CLOSURE
- TRAFFIC CONTROL DEVICES

\* MOVING LANE CLOSURES WILL NOT BE PERMITTED ON EXPRESSWAYS

MODEL: GenNotesSh01 [Sheet]  
FILE NAME: c:\p\work\wtd\byuyang.deng@illinois.gov\d117287D115625-shh-egennote.dgn

USER NAME = Yuyang.Deng	DESIGNED -	REVISED -
	DRAWN -	REVISED -
	CHECKED -	REVISED -
PLOT DATE = 12/15/2025	DATE -	REVISED -

**STATE OF ILLINOIS  
DEPARTMENT OF TRANSPORTATION**

**INDEX OF SHEETS AND STATE STANDARDS, AND GENERAL NOTES**

SCALE: SHEET 1 OF 1 SHEETS STA. 0+00.00 TO STA. 0+00.00

F.A. RTE.	SECTION	COUNTY	TOTAL SHEETS	SHEET NO.
**	2025-1078-FCN	*	22	2
CONTRACT NO. 62Y37			ILLINOIS FED. AID PROJECT	

\*COOK, DUPAGE, KANE, LAKE, MCHENRY, & WILL

SUMMARY OF QUANTITIES			TOTAL QUANTITIES	CONSTRUCTION TYPE CODE 0021					
CODE NO	ITEM	UNIT		100% STATE 0021	100% MCHD 0021				
66400505	CHAIN LINK FENCE, 8'	FOOT	200	175	25				
66500105	WOVEN WIRE FENCE, 4'	FOOT	3300	2968	332				
X6640100	FENCE RAIL REMOVAL	FOOT	1570	1450	120				
X6640300	CHAIN LINK FENCE REMOVAL	FOOT	60	56	4				
X6640309	CHAIN LINK GATES (SPECIAL)	SQ FT	700	648	52				
X6640590	CHAIN LINK FENCE POST SLEEVE REPAIR	EACH	430	393	37				
X6640714	CHAIN LINK FABRIC, SPECIAL, 5'-0"	FOOT	45	42	3				
X6640716	CHAIN LINK FABRIC, SPECIAL, 6'-0"	FOOT	1890	1707	183				
x6640718	CHAIN LINK FABRIC, SPECIAL, 7'-0"	FOOT	10	9	1				
x6640720	CHAIN LINK FABRIC, SPECIAL, 8'-0"	FOOT	60	55	5				
X6640722	CHAIN LINK FABRIC, TYPE 1, 4'-0"	FOOT	13771	12441	1330				
X6640724	CHAIN LINK FABRIC, TYPE 3, SPECIAL	FOOT	475	437	38				
Z0020210	PULL POST ARRANGEMENT	EACH	3	2	1				
Z0033200	LINE POST, TYPE 1	EACH	595	543	52				
Z0033305	LINE POST, TYPE 3 (SPECIAL)	EACH	30	25	5				
Z0042500	POST (SPECIAL)	EACH	75	66	9				

SUMMARY OF QUANTITIES			TOTAL QUANTITIES	CONSTRUCTION TYPE CODE 0021					
CODE NO	ITEM	UNIT		100% STATE 0021	100% MCHD 0021				
Z0042505	POST REMOVAL AND REPLACEMENT	EACH	2	1	1				
Z0074000	TERMINAL POST, TYPE 1	EACH	40	36	4				
Z0074010	TERMINAL POST, TYPE 3 SPECIAL	EACH	6	5	1				

MODEL: S0001 [Sheet]  
 FILE NAME: c:\p\work\pww\thanh.vo@illinois.gov\1172870116625-shr-S00.dgn

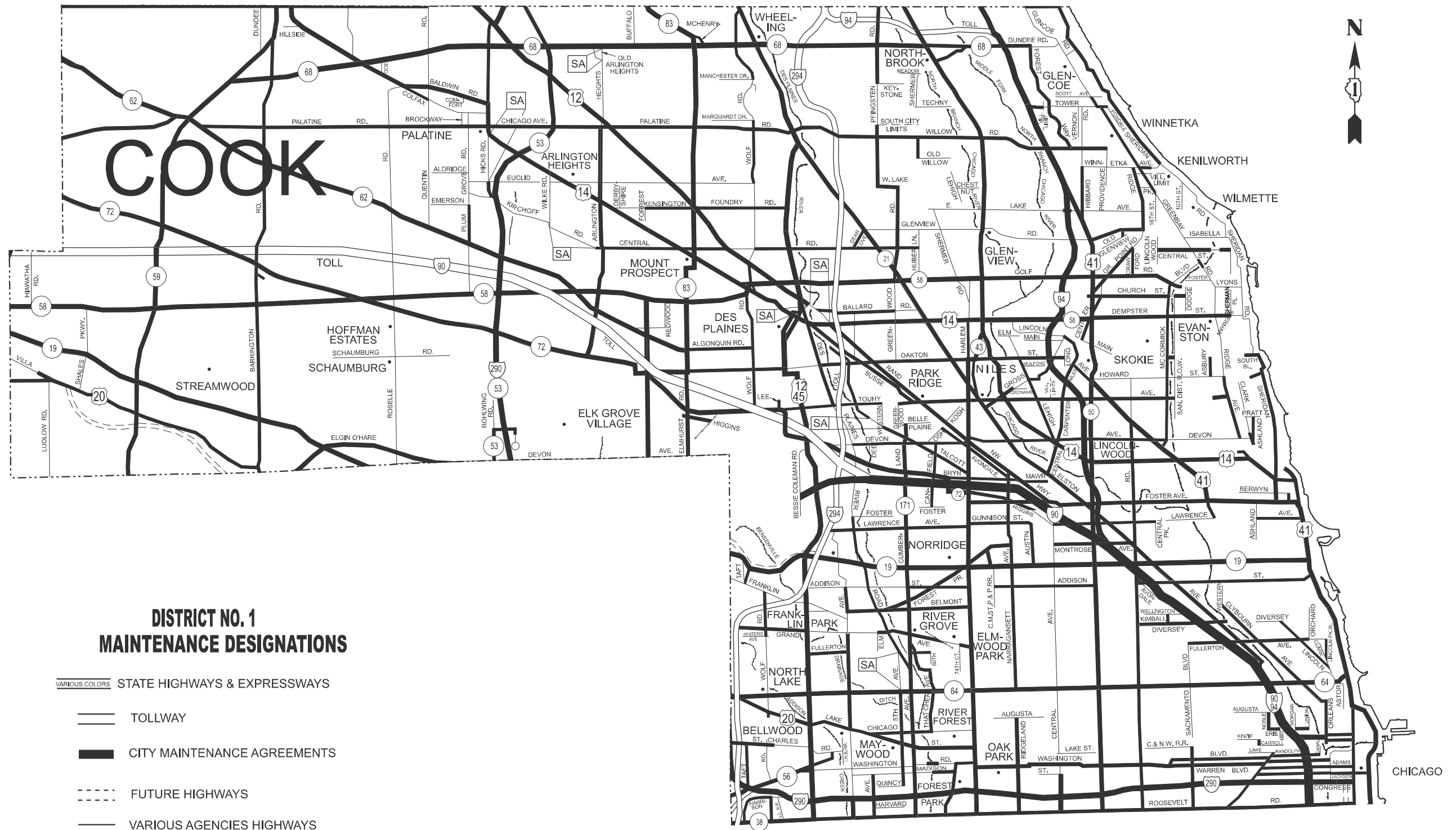
USER NAME = thanh.vo	DESIGNED -	REVISED -
	DRAWN -	REVISED -
	CHECKED -	REVISED -
PLOT DATE = 11/6/2025	DATE -	REVISED -

**STATE OF ILLINOIS  
DEPARTMENT OF TRANSPORTATION**

**SUMMARY OF QUANTITIES**

SCALE: SHEET 1 OF 1 SHEETS STA. 0+00.00 TO STA. 0+00.00

F.A. RTE.	SECTION	COUNTY	TOTAL SHEETS	SHEET NO.
**	2025-1078-FCN	*	22	3
CONTRACT NO. 62Y37				
ILLINOIS FED. AID PROJECT				
**VARIOUS *COOK, DUPAGE, KANE, LAKE, MCHENRY, & WILL				



**DISTRICT NO. 1  
MAINTENANCE DESIGNATIONS**

- VARIOUS COLORS STATE HIGHWAYS & EXPRESSWAYS
- TOLLWAY
- CITY MAINTENANCE AGREEMENTS
- ..... FUTURE HIGHWAYS
- VARIOUS AGENCIES HIGHWAYS

MODEL - North Cook Map (Sheet)  
FILE NAME - c:\p\work\pwrtd\thanh.vo\illmod6.gov\117287\116925-sh1-details.dgn

USER NAME	= thanh.vo	DESIGNED	-	REVISED	-
		DRAWN	-	REVISED	-
		CHECKED	-	REVISED	-
PLOT DATE	= 11/5/2025	DATE	-	REVISED	-

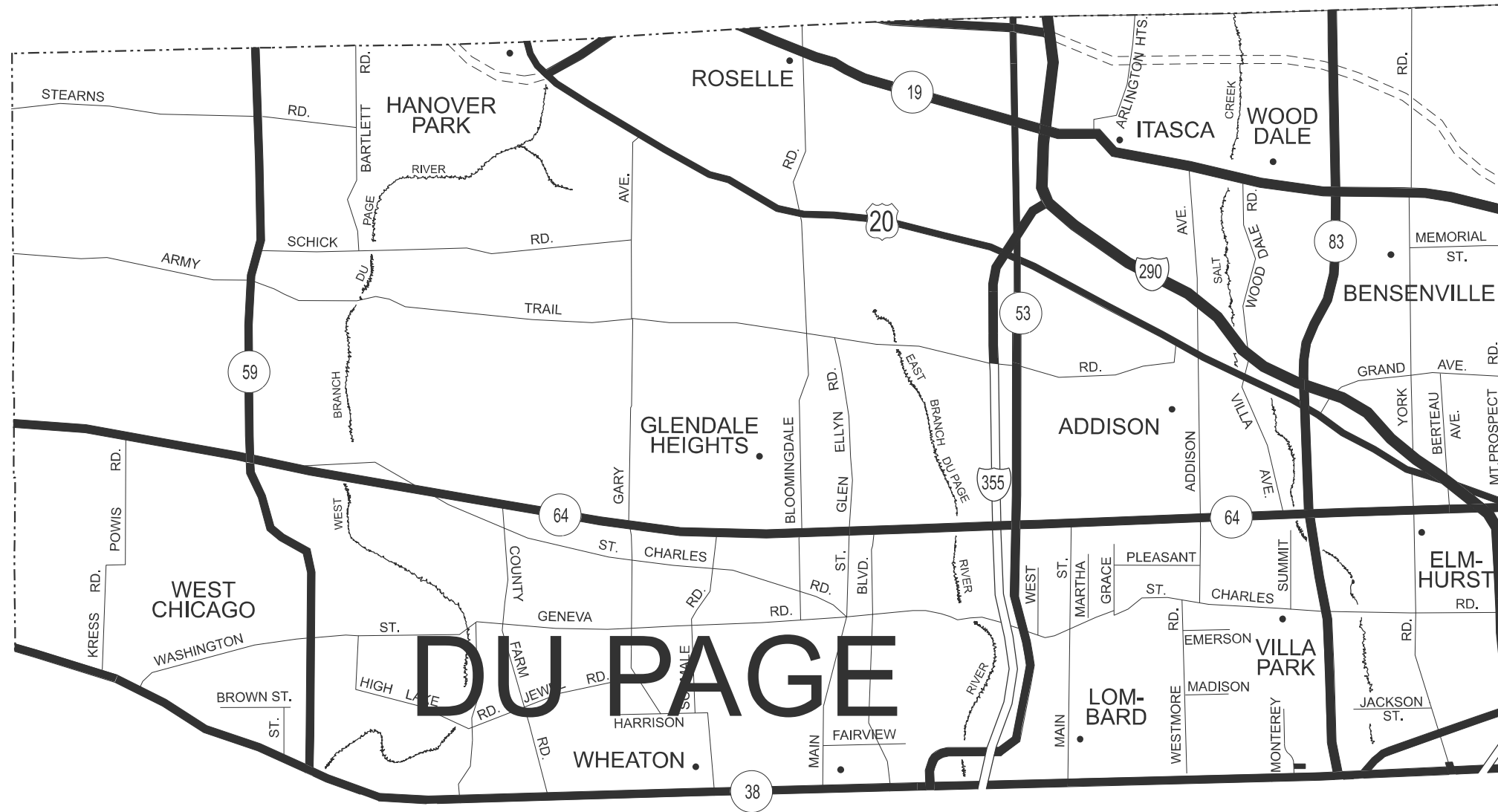
**STATE OF ILLINOIS  
DEPARTMENT OF TRANSPORTATION**

<b>FENCE REPAIR LOCATION MAP COOK COUNTY NORTH OF IL. ROUTE 38</b>	
SCALE:	SHEET 1 OF 14 SHEETS STA. 0+00.00 TO STA. 0+00.00

F.A. RTE.	SECTION	COUNTY	TOTAL SHEETS	SHEET NO.
**	2025-1078-FCN	*	22	4
CONTRACT NO. 62Y37				

ILLINOIS FED. AID PROJECT  
\*COOK, DUPAGE, KANE, LAKE, MCHENRY, & WILL





**DISTRICT NO. 1  
MAINTENANCE DESIGNATIONS**

- VARIOUS COLORS STATE HIGHWAYS & EXPRESSWAYS
- TOLLWAY
- CITY MAINTENANCE AGREEMENTS
- FUTURE HIGHWAYS
- VARIOUS AGENCIES HIGHWAYS

MODEL: Dupage Map-1 | Sheet1  
 FILE NAME: c:\p\work\pwrtd\thanh.vo\illmodr.gov\117287\11625-sht-details.dgn

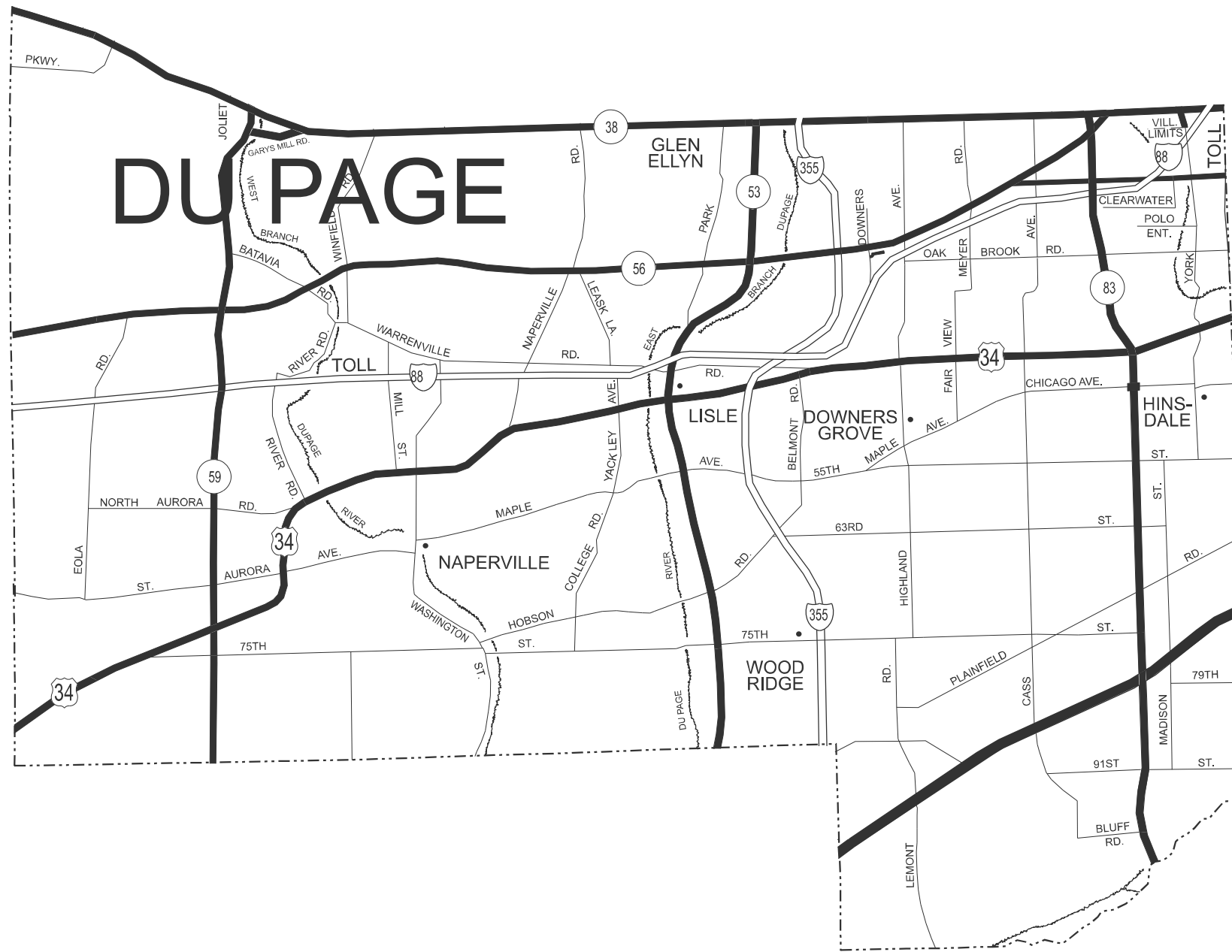
USER NAME = thanh.vo	DESIGNED -	REVISED -
	DRAWN -	REVISED -
	CHECKED -	REVISED -
PLOT DATE = 11/6/2025	DATE -	REVISED -

**STATE OF ILLINOIS  
DEPARTMENT OF TRANSPORTATION**

<b>FENCE REPAIR LOCATION MAP DUPAGE COUNTY NORTH OF IL. ROUTE 38</b>			
SCALE:	SHEET 3	OF 14 SHEETS	TO STA. 0+00.00

F.A. RTE.	SECTION	COUNTY	TOTAL SHEETS	SHEET NO.
**	2025-1078-FCN	*	22	6
CONTRACT NO. 62Y37				

ILLINOIS FED. AID PROJECT  
\*COOK, DUPAGE, KANE, LAKE, MCHENRY, & WILL



### DISTRICT NO. 1 MAINTENANCE DESIGNATIONS

- VARIOUS COLORS STATE HIGHWAYS & EXPRESSWAYS
- TOLLWAY
- CITY MAINTENANCE AGREEMENTS
- FUTURE HIGHWAYS
- VARIOUS AGENCIES HIGHWAYS

MODEL: Dupage Map (Sheet)  
 FILE NAME: c:\p\work\wct\thanh.vo\illmodr.gov\117287\116925-sht-details.dgn

USER NAME = thanh.vo	DESIGNED -	REVISED -
	DRAWN -	REVISED -
	CHECKED -	REVISED -
PLOT DATE = 11/6/2025	DATE -	REVISED -

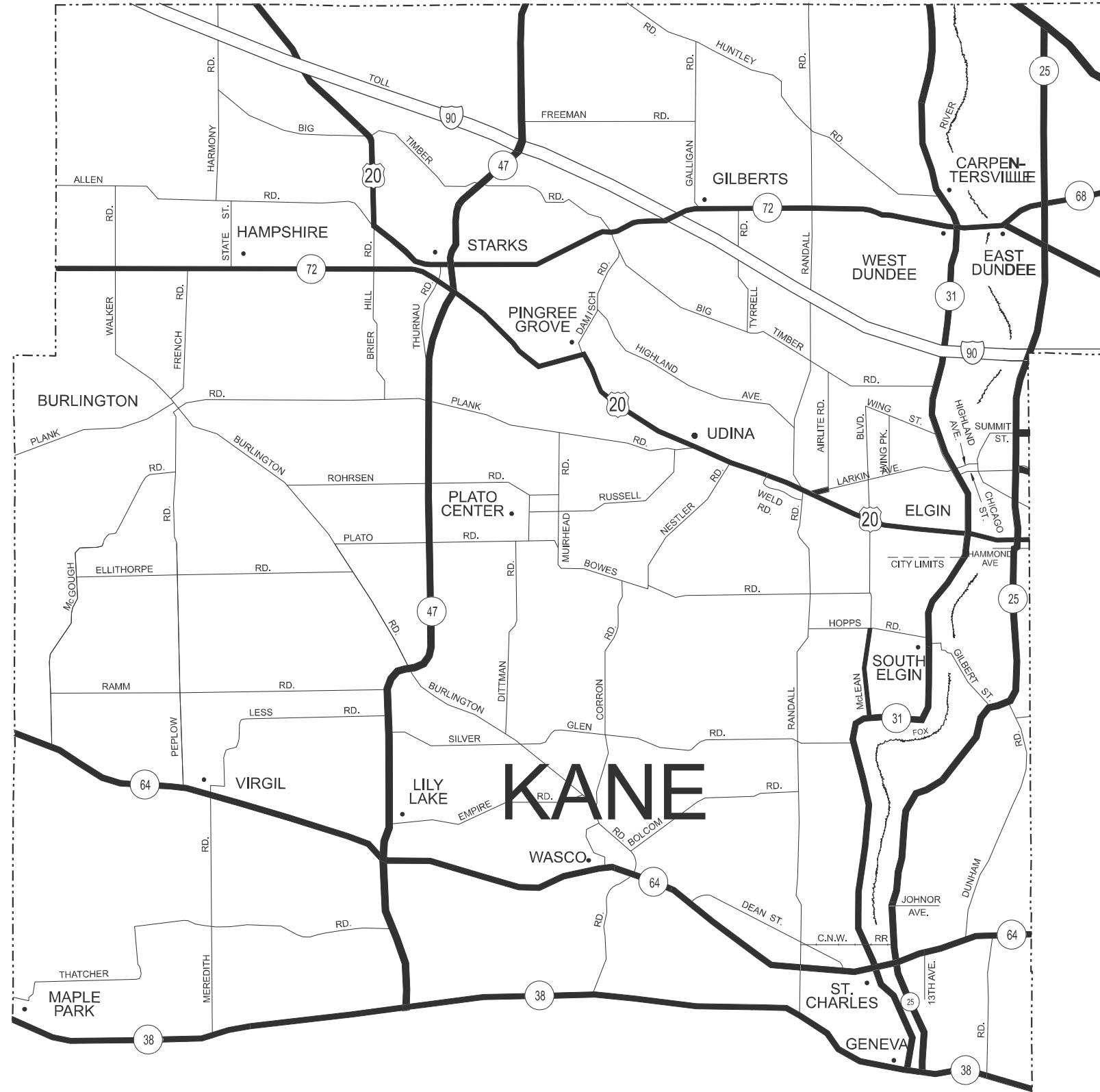
**STATE OF ILLINOIS**  
**DEPARTMENT OF TRANSPORTATION**

**FENCE REPAIR LOCATION MAP**  
**DUPAGE COUNTY SOUTH OF IL. ROUTE 38**

SCALE: SHEET 4 OF 14 SHEETS STA. 0+00.00 TO STA. 0+00.00

F.A. RTE.	SECTION	COUNTY	TOTAL SHEETS	SHEET NO.
**	2025-1078-FCN	*	22	7
CONTRACT NO. 62Y37				

ILLINOIS FED. AID PROJECT  
\*COOK, DUPAGE, KANE, LAKE, MCHENRY, & WILL



### DISTRICT NO. 1 MAINTENANCE DESIGNATIONS

- VARIOUS COLORS STATE HIGHWAYS & EXPRESSWAYS
- TOLLWAY
- CITY MAINTENANCE AGREEMENTS
- FUTURE HIGHWAYS
- VARIOUS AGENCIES HIGHWAYS

MODEL: Kane Map-1 [Sheet]  
 FILE NAME: c:\p\work\kwd\thanh.vo@illmodt\thanh.vo@illmodt\11625-sh1-details.dgn

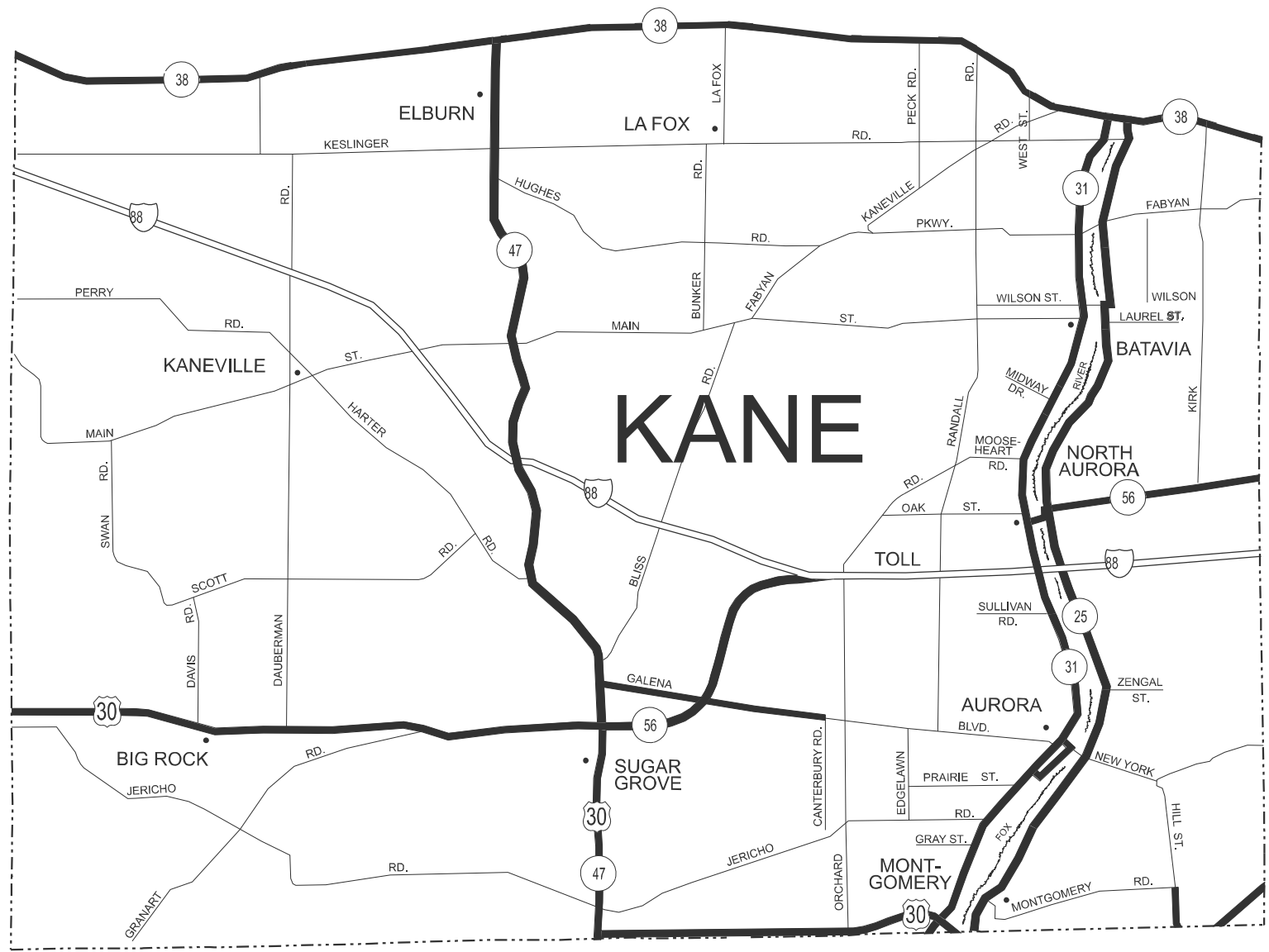
USER NAME = thanh.vo	DESIGNED -	REVISED -
	DRAWN -	REVISED -
	CHECKED -	REVISED -
PLOT DATE = 11/6/2025	DATE -	REVISED -

**STATE OF ILLINOIS**  
**DEPARTMENT OF TRANSPORTATION**

<b>FENCE REPAIR LOCATION MAP</b>			
<b>KANE COUNTY NORTH OF IL. ROUTE 38</b>			
SCALE:	SHEET 5 OF 14 SHEETS	STA. 0+00.00	TO STA. 0+00.00

F.A. RTE.	SECTION	COUNTY	TOTAL SHEETS	SHEET NO.
**	2025-1078-FCN	*	22	8
CONTRACT NO. 62Y37				

\*\*VARIOUS ILLINOIS FED. AID PROJECT \*COOK, DUPAGE, KANE, LAKE, MCHENRY, & WILL



### DISTRICT NO. 1 MAINTENANCE DESIGNATIONS

- VARIOUS COLORS STATE HIGHWAYS & EXPRESSWAYS
- TOLLWAY
- CITY MAINTENANCE AGREEMENTS
- FUTURE HIGHWAYS
- VARIOUS AGENCIES HIGHWAYS

MODEL: Kane Map (Sheet)  
 FILE NAME: c:\p\work\kvd\thanh.vo@illinois.gov\117287\116925-sh1-details.dgn

USER NAME = thanh.vo	DESIGNED -	REVISED -
	DRAWN -	REVISED -
	CHECKED -	REVISED -
PLOT DATE = 11/6/2025	DATE -	REVISED -

**STATE OF ILLINOIS**  
**DEPARTMENT OF TRANSPORTATION**

<b>FENCE REPAIR LOCATION MAP</b>			
<b>KANE COUNTY SOUTH OF IL. ROUTE 38</b>			
SCALE:	SHEET 6	OF 14 SHEETS	TO STA. 0+00.00 TO STA. 0+00.00

F.A. RTE.	SECTION	COUNTY	TOTAL SHEETS	SHEET NO.
**	2025-1078-FCN	*	22	9
CONTRACT NO. 62Y37				

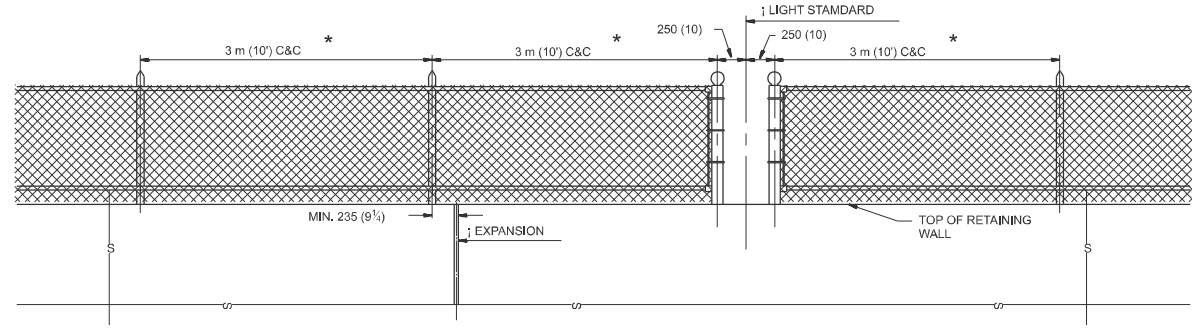
ILLINOIS FED. AID PROJECT  
\*COOK, DUPAGE, KANE, LAKE, MCHENRY, & WILL



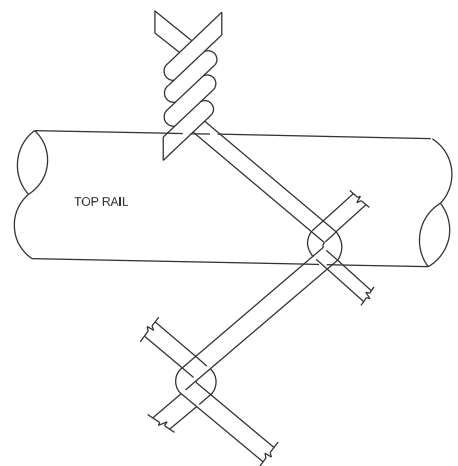




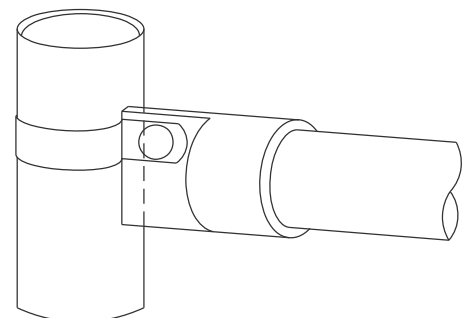
NOTE  
 \* MAXIMUM POST SPACING SHALL BE 3 m (10')  
 \* C&C  
 EXCEPT WHERE OTHERWISE SHOWN ON PLANS



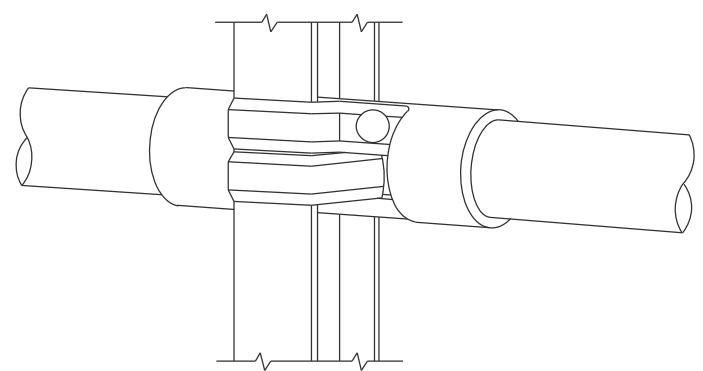
ELEVATION VIEW OF RETAINING WALL WITH PEDESTRIAN BARRIER TYPE III



WIRE MESH FABRIC TO BE BARBED AT THE TOP

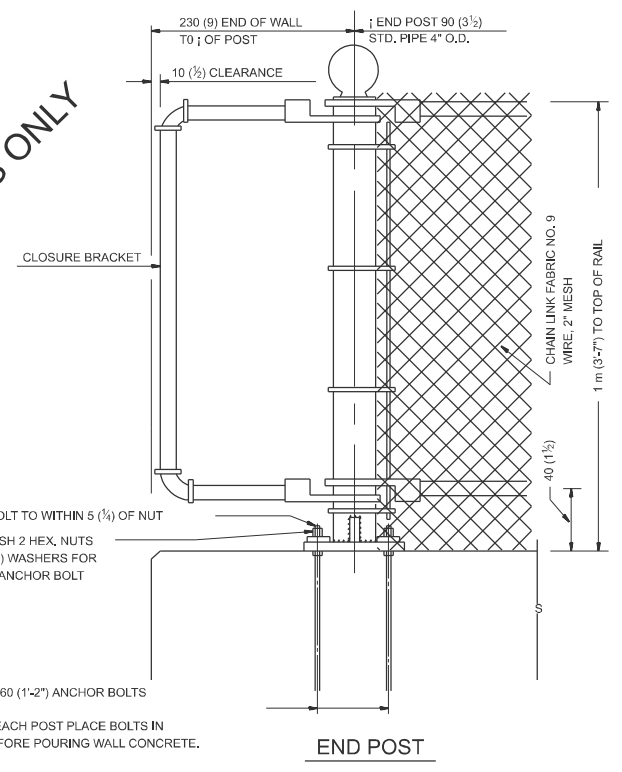


RAIL FITTING AT END POSTS



RAIL FITTING ON SECTION LINE POST

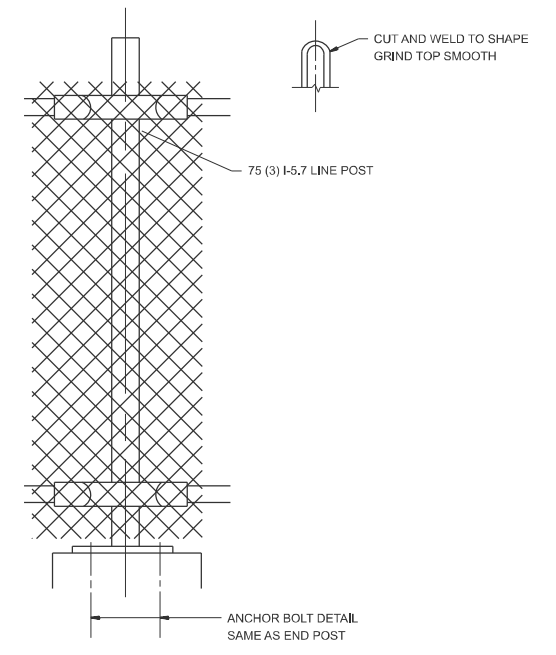
FOR INFORMATIONAL PURPOSES ONLY



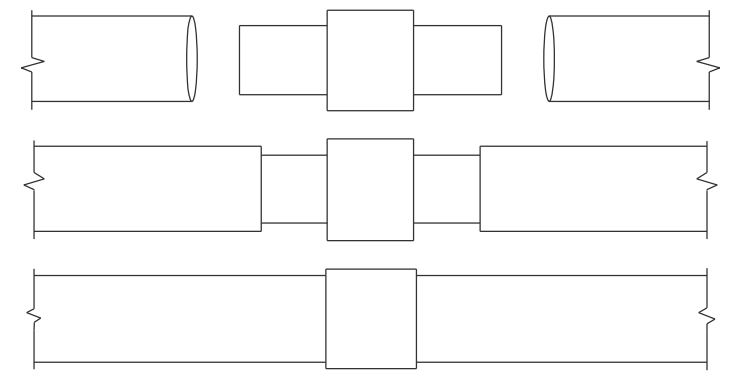
END POST

20 (3/4) 360 (1'-2") ANCHOR BOLTS FURNISH  
 2-50 (2) WASHERS FOR EACH ANCHOR BOLT  
 4 BOLTS EACH POST PLACE BOLTS IN FORM BEFORE POURING WALL CONCRETE.

NOTE:  
 THE COST OF FURNISHING ANCHOR BOLTS, NUTS, & WASHERS TO BE INCIDENTAL

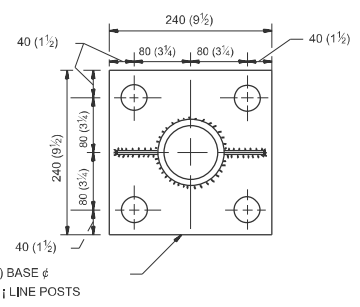


LINE POST



EXPANSION COUPLING DETAIL

NOTE: EXP. COUPLING TO APPEAR IN TOP AND BOTTOM RAILS WHERE EVER EXP. JT. APPEARS IN STRUCTURE.



ANCHOR PLATE DETAILS

NOTE:  
 POST, PLATE AND GUSSET ASSEMBLY SHALL BE GALVANIZED AFTER ALL CUTTING, DRILLING, WELDING, AND FABRICATION HAVE BEEN COMPLETED, THE GALVANIZED COATING SHALL CONFORM TO THE REQUIREMENTS OF AASHTO M 120, THE GALVANIZED COATING SHALL NOT BE LESS THAN 610 G/SQ M (2.0 OZ./SQ. FT.) OF SURFACE.

ALL DIMENSIONS ARE IN MILLIMETERS (INCHES) UNLESS OTHERWISE SHOWN.

MODEL: Ped Barr, Tv III (Sheet)  
 FILE NAME: c:\p\work\pedbarr\thanh.vo@illinois.gov\117287\0115625-sh1-details.dgn

USER NAME = thanh.vo	DESIGNED -	REVISED -
	DRAWN -	REVISED -
	CHECKED -	REVISED -
PLOT DATE = 11/6/2025	DATE -	REVISED -

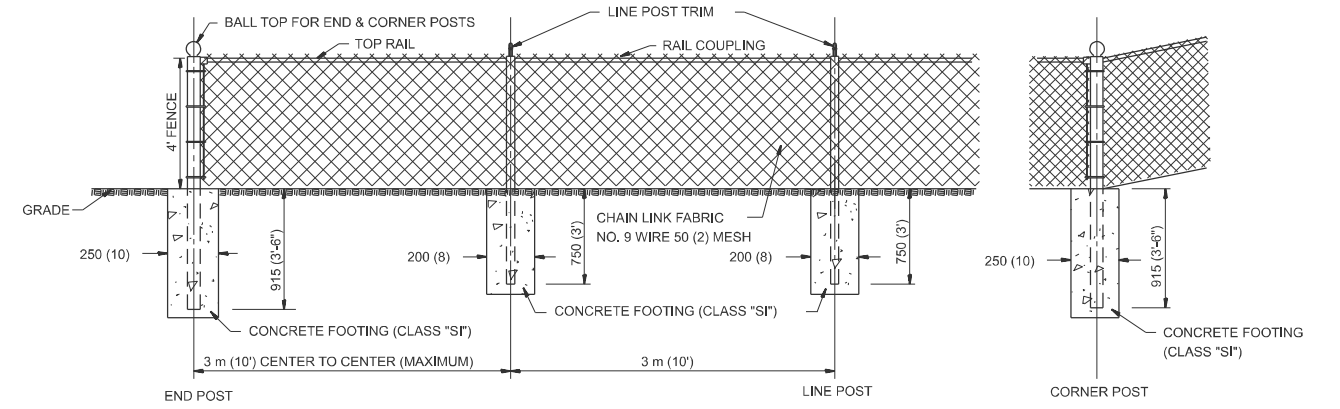
STATE OF ILLINOIS  
 DEPARTMENT OF TRANSPORTATION

PEDESTRIAN BARRIER TYPE III  
 STD. 10-SS-514 R

SCALE: SHEET 10 OF 14 SHEETS STA. 0+00.00 TO STA. 0+00.00

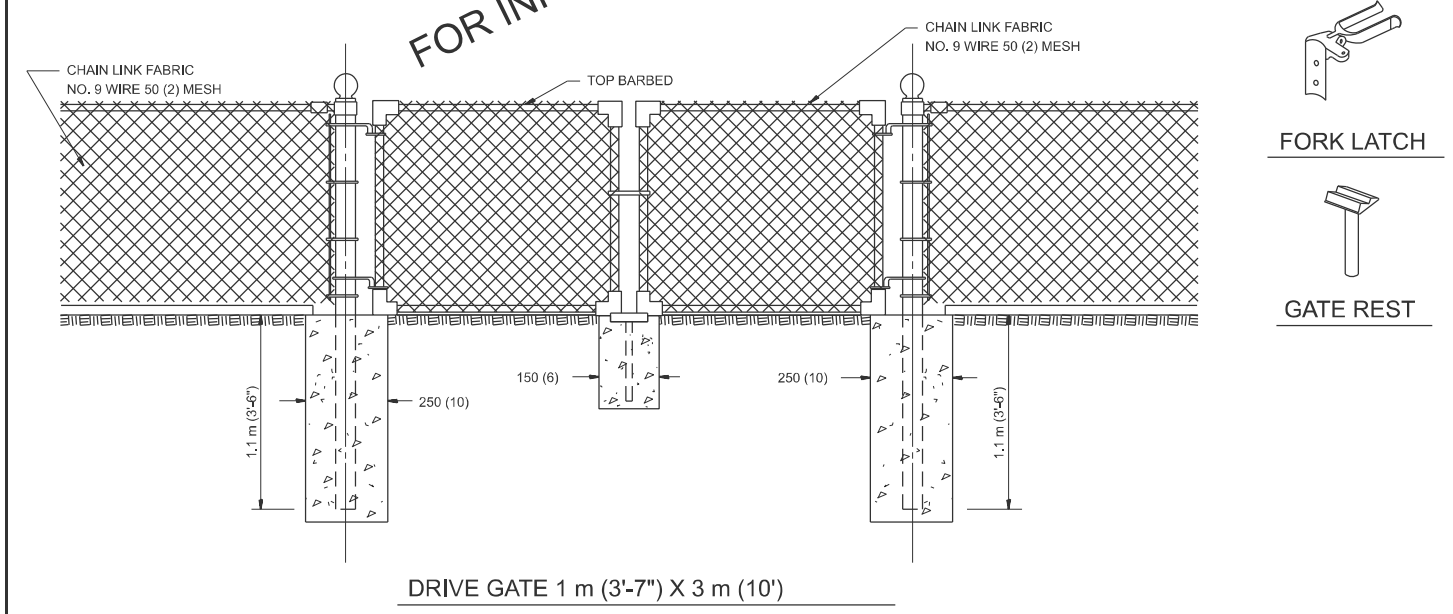
F.A. RTE.	SECTION	COUNTY	TOTAL SHEETS	SHEET NO.
**	2025-1078-FCN	*	22	13
CONTRACT NO. 62Y37				

ILLINOIS FED. AID PROJECT  
 \*\*VARIOUS \*COOK, DUPAGE, KANE, LAKE, MCHENRY, & WILL



CHAIN LINK FENCE

FOR INFORMATIONAL PURPOSES ONLY



DRIVE GATE 1 m (3'-7") X 3 m (10')

ALL DIMENSIONS ARE IN MILLIMETERS (INCHES) UNLESS OTHERWISE SHOWN.

NOTE:  
 THE CHAIN LINK FENCE AS SHOWN HEREIN SHALL BE CONSTRUCTED AT SUCH LOCATIONS AS SHOWN ON PLANS AND IN ACCORDANCE WITH THE SPECIAL PROVISIONS THE ENGINEER SHALL ESTABLISH ALL NECESSARY LINE AND GRADE PRIOR TO THE ERECTION OF THE FENCE IN CONFORMANCE WITH THE PLANS

MODEL: Chain Link Fence (Sheet)  
 FILE NAME: c:\p\work\wv\td\thanh.vo@illinois.gov\117287\116925-sh1-details.dgn

USER NAME = thanh.vo	DESIGNED -	REVISED -
	DRAWN -	REVISED -
	CHECKED -	REVISED -
PLOT DATE = 11/6/2025	DATE -	REVISED -

STATE OF ILLINOIS  
 DEPARTMENT OF TRANSPORTATION

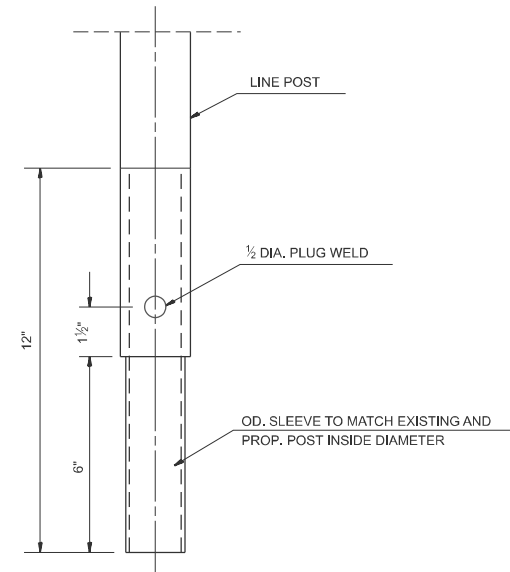
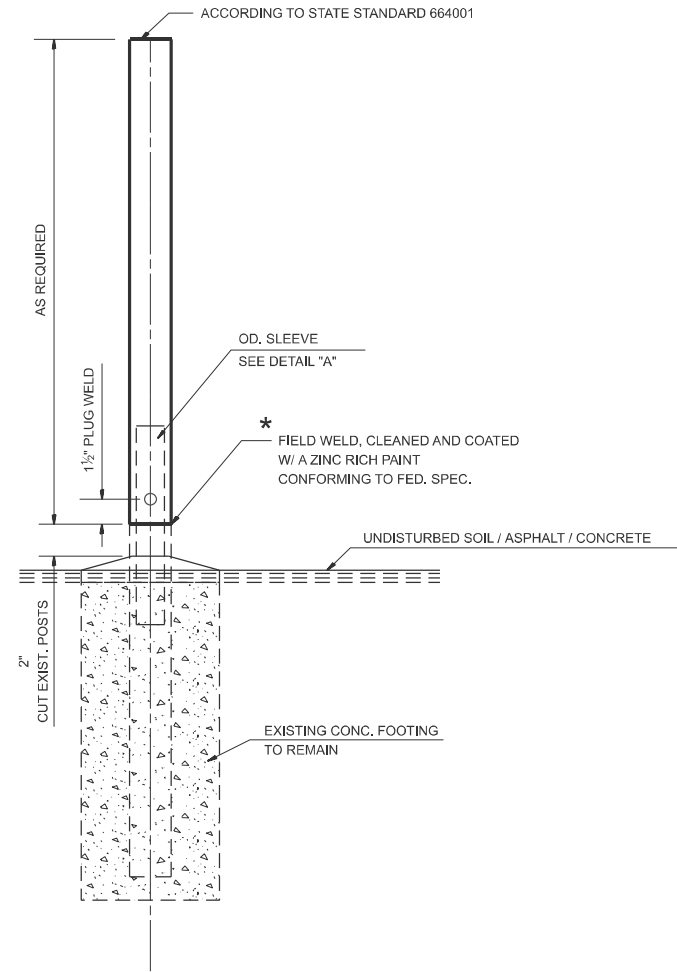
CHAIN LINK FENCE  
 STD 10-SS-506 B

SCALE: SHEET 11 OF 14 SHEETS STA. 0+00.00 TO STA. 0+00.00

F.A. RTE.	SECTION	COUNTY	TOTAL SHEETS	SHEET NO.
**	2025-1078-FCN	*	22	14
CONTRACT NO. 62Y37				

ILLINOIS FED. AID PROJECT  
 \*\*VARIOUS \*COOK, DUPAGE, KANE, LAKE, MCHENRY, & WILL

GENERAL NOTES:  
 THIS WORK CONSISTS OF FURNISHING ALL LABOR, MATERIALS, TOOLS AND EQUIPMENT TO REPAIR CHAIN LINK FENCE POST SLEEVE AS SHOWN ON THE PLANS OR AS DIRECTED BY THE ENGINEER, AND IN ACCORDANCE WITH STATE STANDARD 664001.  
 BASIS OF PAVEMENT: THIS WORK SHALL BE PAID FOR AT THE CONTRACT UNIT PRICE EACH FOR "CHAIN LINK FENCE POST SLEEVE REPAIR" WHICH PRICE SHALL BE PAYMENT IN FULL TO COMPLETE THE WORK AS SPECIFIED HEREIN.



SLEEVE DET. DWG  
 DETAIL "A"  
 SLEEVE DETAIL

\* THIS WORK SHALL BE INCLUDED IN THE COST OF THE PAY ITEM "CHAIN LINK FENCE POST SLEEVE REPAIR"

MODEL: Chain Link Fence Post Sleeve (Sheet)  
 FILE NAME: c:\p\work\pwr\thanh.vo\illmoda.gov\117287\116925-sh1-details.dgn

USER NAME = thanh.vo	DESIGNED -	REVISED -
	DRAWN -	REVISED -
	CHECKED -	REVISED -
PLOT DATE = 11/6/2025	DATE -	REVISED -

**STATE OF ILLINOIS  
 DEPARTMENT OF TRANSPORTATION**

**CHAIN LINK FENCE POST SLEEVE  
 REPAIR DETAIL**

SCALE: SHEET 12 OF 14 SHEETS STA. 0+00.00 TO STA. 0+00.00

F.A. RTE.	SECTION	COUNTY	TOTAL SHEETS	SHEET NO.
**	2025-1078-FCN	*	22	15
CONTRACT NO. 62Y37				

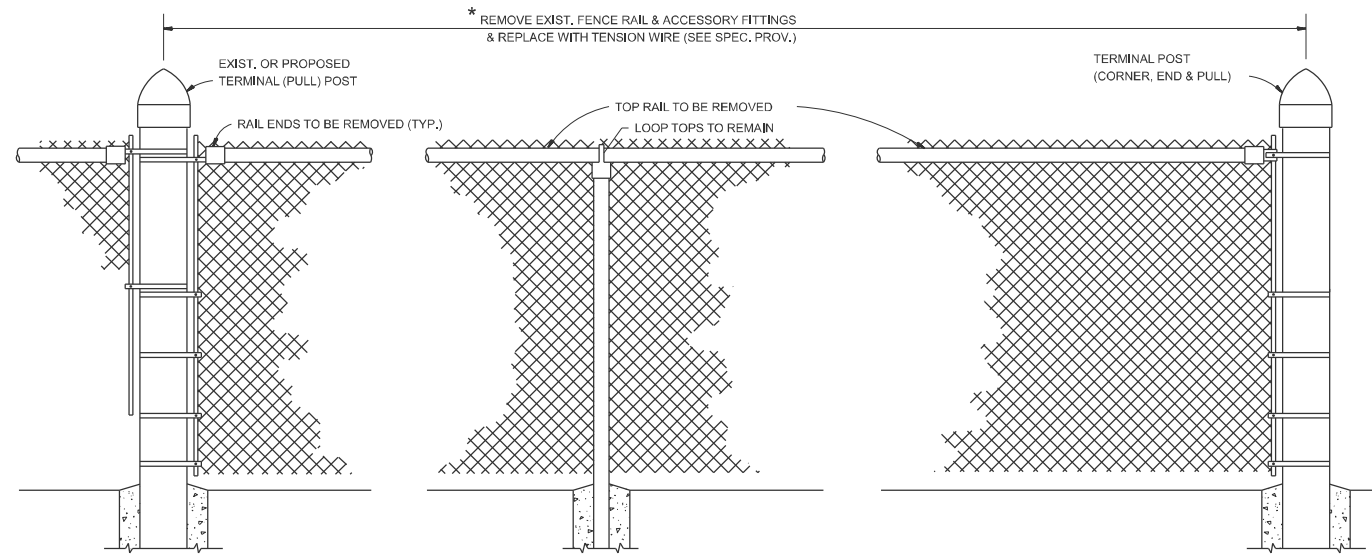
\*\*VARIOUS

ILLINOIS FED. AID PROJECT  
 \*COOK, DUPAGE, KANE, LAKE, MCHENRY, & WILL

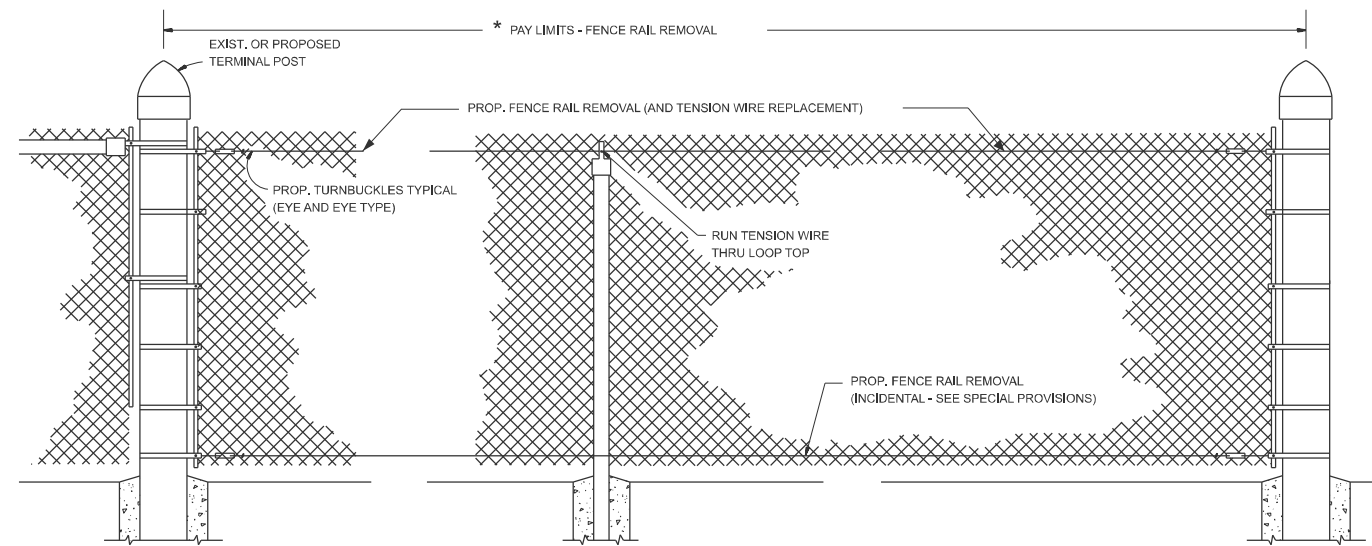
**GENERAL NOTES**

FENCE RAIL REMOVAL: THIS ITEM CONSISTS OF REMOVING EXISTING TOP OR BOTTOM RAIL (DAMAGED OR UNDAMAGED) AND REPLACING WITH TENSION WIRE. BOTTOM TENSION WIRE SHALL BE CONSIDERED INCIDENTAL EXCEPT AT LOCATIONS OF EXISTING BOTTOM RAIL REMOVAL.

TENSION WIRE: THIS ITEM CONSISTS OF INSTALLING TENSION WIRE, TOP OR BOTTOM, WHERE TOP OR BOTTOM RAIL IS NON-EXISTENT, OR WHERE EXISTING DAMAGED TENSION WIRE IS REMOVED AND REPLACED BY NEW TENSION WIRE. ALL WORK AND MATERIALS SHALL BE IN ACCORDANCE WITH THE PLANS, SPECIAL PROVISIONS, STANDARD SPECIFICATIONS AND REQUIREMENTS OF OTHER FENCE COMPONENT PARTS SHALL BE MEASURED AND PAID FOR SEPARATELY AS DESCRIBED IN THE SPECIAL PROVISIONS.

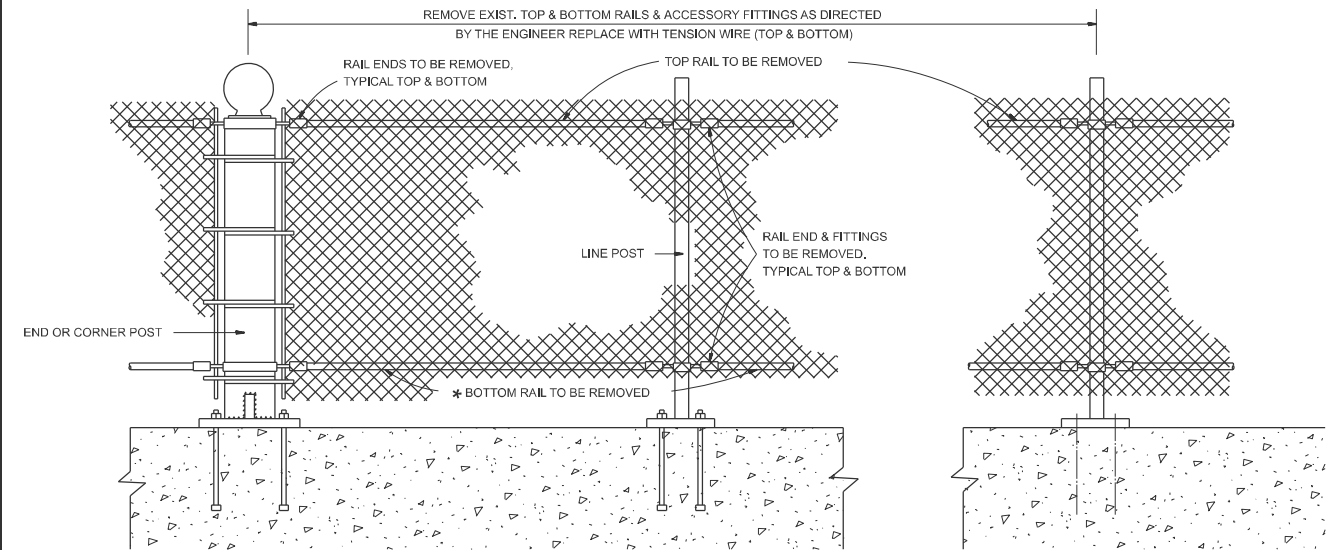


EXIST. CHAIN LINK FENCE WITH TOP RAIL

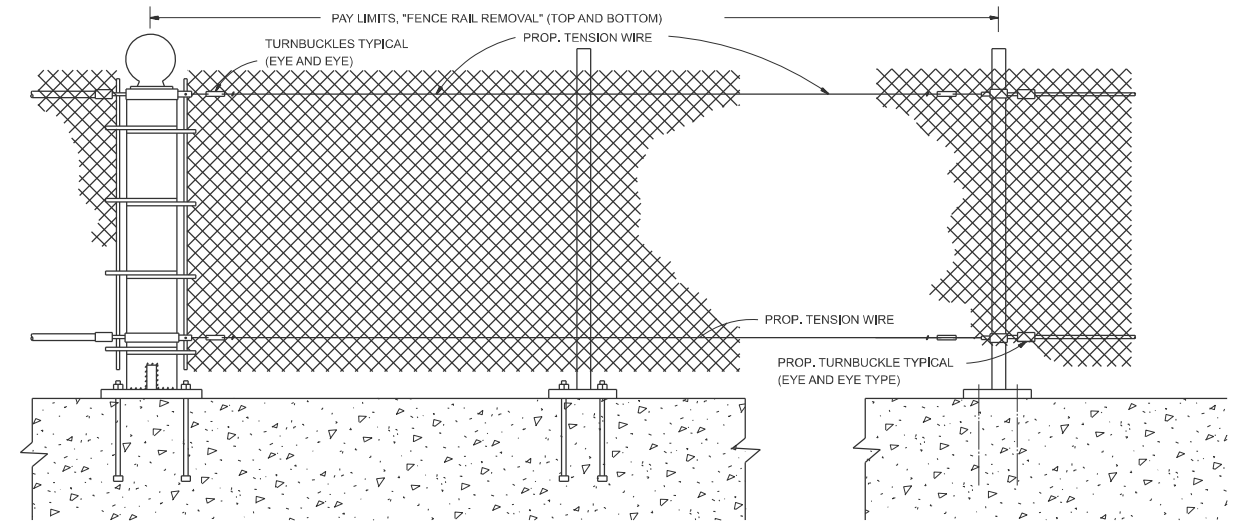


PROP. CHAIN LINK FENCE WITH "FENCE RAIL REMOVAL"

\* THE ENGINEER IN CHARGE SHALL DETERMINE THE LENGTH OF FENCE RAIL TO BE REMOVED & REPLACED WITH "TENSION WIRE"



EXIST. PEDESTRIAN BARRIER TYPE 3 WITH TOP AND BOTTOM RAILS



PROP. PEDESTRIAN BARRIER TYPE 3 WITH FENCE RAIL REMOVAL

ALL DIMENSIONS ARE IN MILLIMETERS (INCHES) UNLESS OTHERWISE SHOWN.

MODEL: PE Ped Barr and Chn Lnk Fnc w Tension Wire and Fen Rail Rem (Sheet)  
FILE NAME: c:\p\work\pedbarr\thanh.vo\illmodr.gpd\11728\116625-shr-details.dgn

USER NAME = thanh.vo	DESIGNED -	REVISED -
	DRAWN -	REVISED -
	CHECKED -	REVISED -
PLOT DATE = 11/6/2025	DATE -	REVISED -

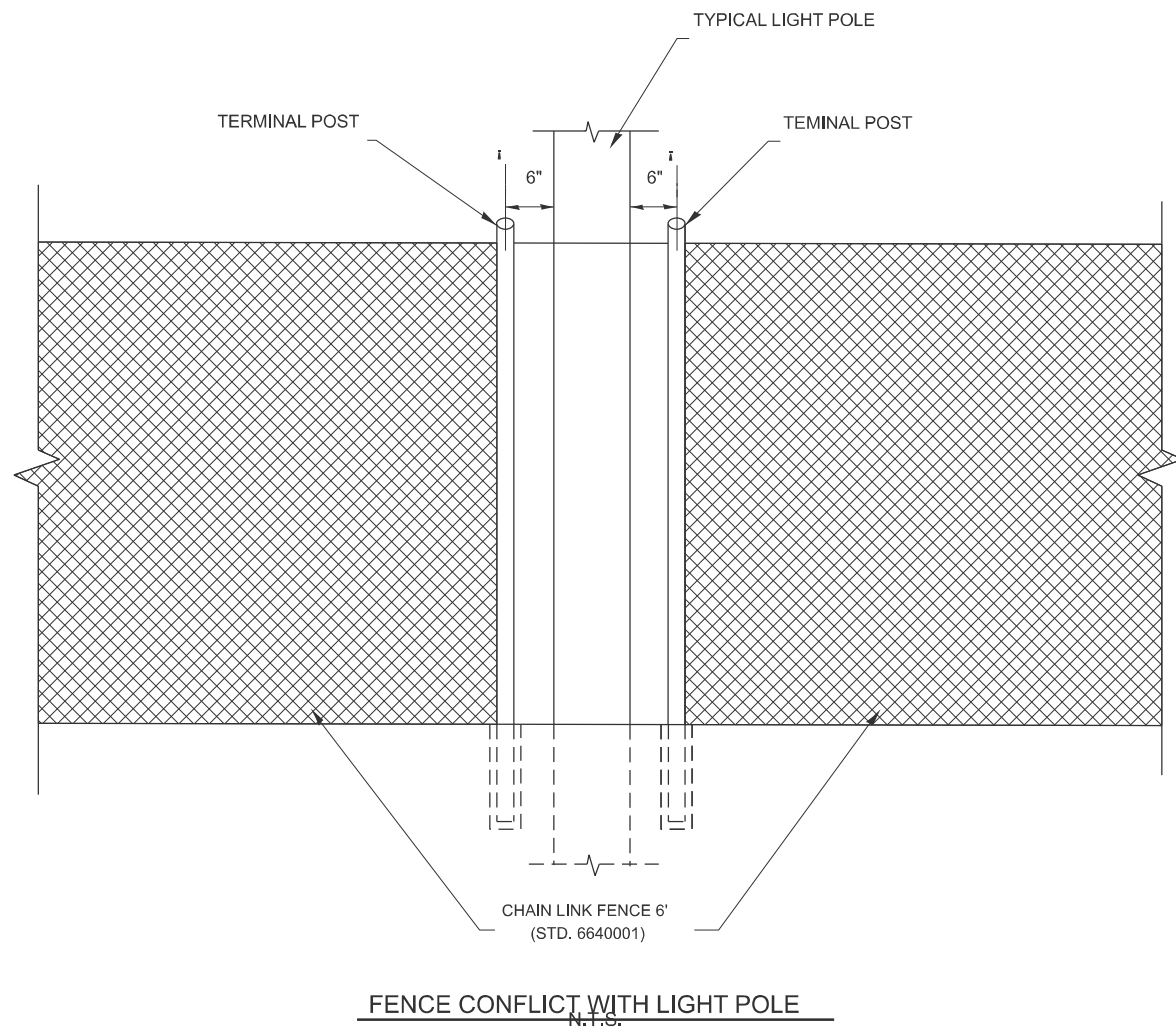
STATE OF ILLINOIS  
DEPARTMENT OF TRANSPORTATION

PROPOSED PEDESTRIAN BARRIER AND CHAIN LINK  
FENCE WITH TENSION WIRE AND FENCE RAIL REMOVAL

SCALE: SHEET 13 OF 14 SHEETS STA. 0+00.00 TO STA. 0+00.00

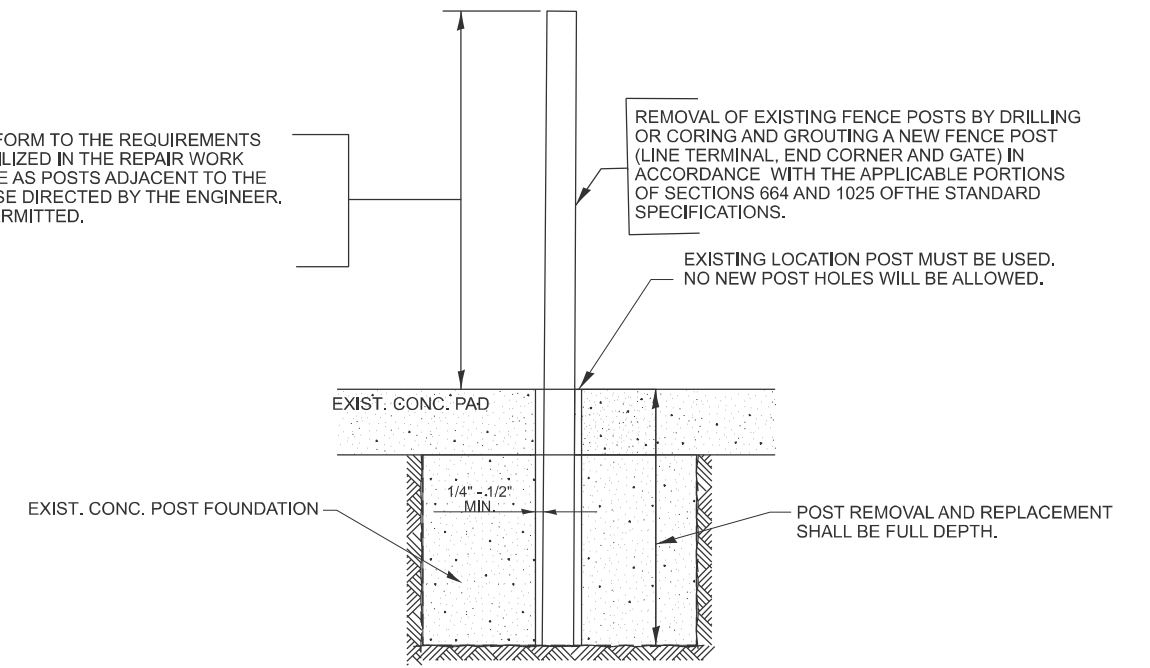
F.A. RTE.	SECTION	COUNTY	TOTAL SHEETS	SHEET NO.
**	2025-1078-FCN	*	22	16
CONTRACT NO. 62Y37				

ILLINOIS FED. AID PROJECT \*COOK, DUPAGE, KANE, LAKE, MCHENRY, & WILL



**FENCE CONFLICT WITH LIGHT POLE**  
N.T.S.

GALVANIZED POSTS SHALL CONFORM TO THE REQUIREMENTS OF STANDARD 864001 POSTS UTILIZED IN THE REPAIR WORK SHALL BE THE SAME TYPE SHAPE AS POSTS ADJACENT TO THE REPAIR AREA UNLESS OTHERWISE DIRECTED BY THE ENGINEER. NO USED MATERIALS WILL BE PERMITTED.



**POST REMOVAL AND REPLACEMENT**

MODEL: special fence details (Sheet)  
FILE NAME: c:\p\work\pwr\td\thanh.vo@illinois.gov\117287\116925-shf-details.dgn

USER NAME = thanh.vo	DESIGNED -	REVISED -
	DRAWN -	REVISED -
	CHECKED -	REVISED -
PLOT DATE = 11/6/2025	DATE -	REVISED -

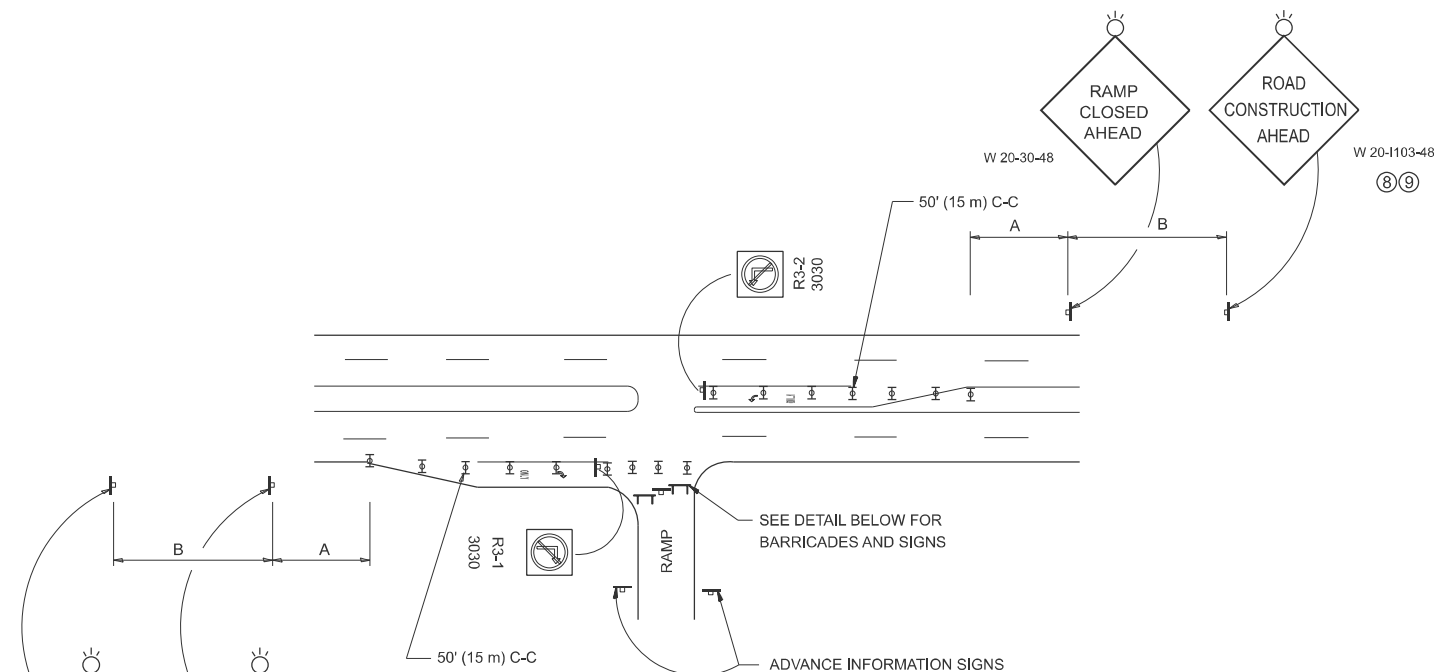
**STATE OF ILLINOIS  
DEPARTMENT OF TRANSPORTATION**

**SPECIAL FENCE DETAILS**

SCALE: SHEET 14 OF 14 SHEETS STA. 0+00.00 TO STA. 0+00.00

F.A. RTE.	SECTION	COUNTY	TOTAL SHEETS	SHEET NO.
**	2025-1078-FCN	*	22	17
CONTRACT NO. 62Y37				

ILLINOIS FED. AID PROJECT  
\*\*VARIOUS \*COOK, DUPAGE, KANE, LAKE, MCHENRY, & WILL

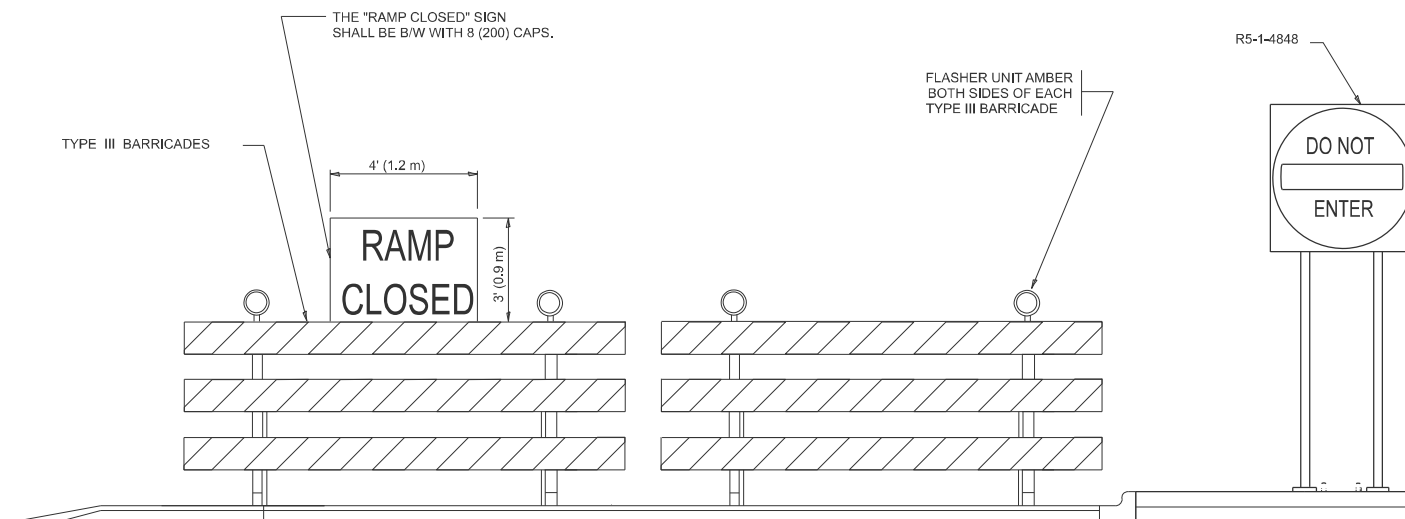
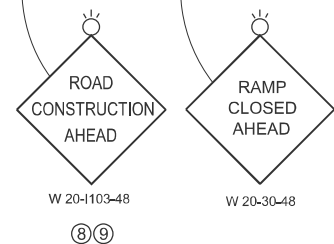


**ENTRANCE RAMP CLOSURE**

SIGN SPACING TABLE

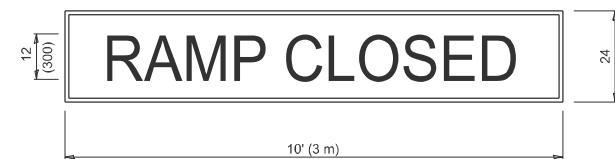
FACILITY	DISTANCE BETWEEN SIGNS	
	A	B
EXPRESSWAY >24 HOURS	1000' (300 m)	1500' (450 m)
EXPRESSWAY ≤24 HOURS	500' (150 m)	500' (150 m)
ARTERIAL 55 MPH	500' (150 m)	500' (150 m)
ARTERIAL 50-45 MPH	350' (100 m)	350' (100 m)
ARTERIAL <45 MPH	200' (60 m)	200' (60 m)

DISTANCES MAY BE SHORTENED DEPENDING UPON THE PROXIMITY OF ADJACENT RAMPS OR INTERSECTIONS.



**DETAIL FOR REQUIRED BARRICADES & SIGNS**

**RAMP CLOSURE ADVANCE WARNING SIGN**



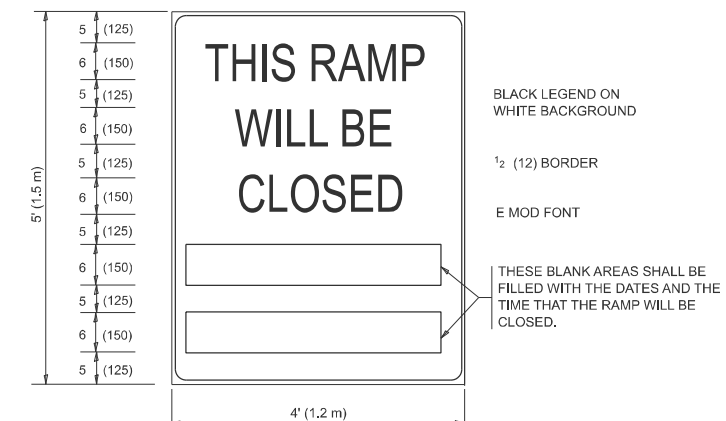
BLACK LEGEND ON ORANGE BACKGROUND MOUNTED DIAGONALLY  
E MOD FONT  
1 (25) BORDER

THESE SIGNS ARE REQUIRED ON ALL THE EXIT GUIDE SIGNS FOR EXIT RAMPS THAT WILL BE CLOSED FOR MORE THAN FOUR (4) CONSECUTIVE DAYS.

THESE SIGNS ARE REQUIRED ON BOTH SIDES OF THE RAMP, MINIMUM OF 1 WEEK IN ADVANCE OF THE CLOSURE.

THESE SIGNS SHALL BE FABRICATED AND PAID FOR ACCORDING TO THE TEMPORARY INFORMATION SIGNING SPECIAL PROVISION

**RAMP CLOSURE ADVANCE INFORMATION SIGN**



BLACK LEGEND ON WHITE BACKGROUND

1/2 (12) BORDER

E MOD FONT

**GENERAL NOTES:**

- CONES MAY BE SUBSTITUTED FOR DRUMS OR TYPE II BARRICADES DURING DAY OPERATIONS. CONES SHALL BE A MINIMUM OF 28 (700) HIGH.
- VERTICAL BARRICADES SHALL NOT BE USED FOR RAMP CLOSURES.
- A FLAGGER SHALL BE POSITIONED AT EACH CLOSED RAMP THAT IS OPEN TO CONSTRUCTION VEHICLES, PRECEDED BY A W20-7 FLAGGER WARNING SIGN.
- ALL ROUTE MARKERS AND TRAILBLAZER ASSEMBLIES WHICH DIRECT MOTORISTS TO A CLOSED ENTRANCE RAMP SHALL BE COVERED WHEN THE RAMP IS CLOSED FOR MORE THAN FOUR (4) DAYS.
- THE SIGNING AND BARRICADING WHICH IS REQUIRED BY THIS DETAIL SHALL BE INCLUDED IN THE COST OF TRAFFIC CONTROL AND PROTECTION (EXPRESSWAYS).
- AUTHORIZATION FROM THE DISTRICT'S BUREAU OF TRAFFIC IS REQUIRED FOR ALL RAMP CLOSURES.
- THE RAMP CLOSURE ADVANCE INFORMATION SIGNS SHALL BE ERECTED IF THE CLOSURE TIME EXCEEDS TWENTY-FOUR (24) HOURS. ADDITIONAL ADVANCE WARNING SIGNS ON EXIT GUIDE SIGNING WILL BE REQUIRED FOR EXIT RAMP CLOSURES THAT EXCEED FOUR (4) DAYS IN LENGTH
- ROAD CONSTRUCTION AHEAD SIGNS MAY BE OMITTED WHEN THIS DETAIL IS USED IN CONJUNCTION WITH OTHER TRAFFIC CONTROL THAT ALREADY INCLUDES A ROAD CONSTRUCTION AHEAD SIGN.
- ARTERIAL ROAD CONSTRUCTION AHEAD SIGNS SHALL BE INSTALLED ON THE LEFT SIDE OF TRAFFIC IF THE MEDIAN IS MORE THAN 10 FT WIDE.

ALL DIMENSIONS ARE IN INCHES (MILLIMETERS) UNLESS OTHERWISE SHOWN.

- SYMBOLS**
- TYPE II BARRICADE OR DRUM
  - TYPE III BARRICADE WITH 2 FLASHING LIGHTS

STATE OF ILLINOIS  
DEPARTMENT OF TRANSPORTATION

ENTRANCE AND EXIT RAMP  
CLOSURE DETAILS

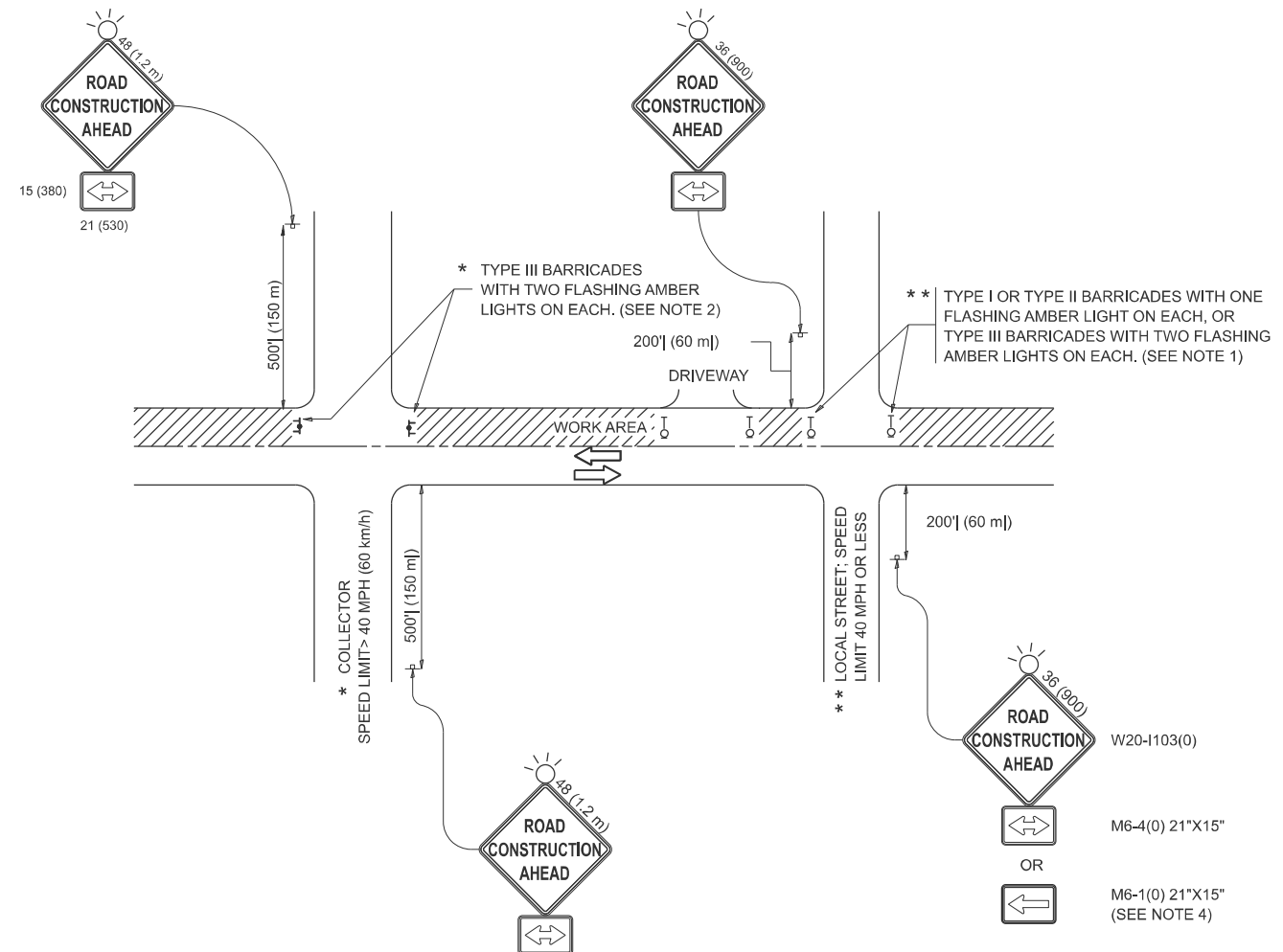
USER NAME = thanh.vo	DESIGNED - D.W.S.	REVISED - S.P.B._12-09
	DRAWN - M.D._06-13	REVISED - M.D._06-13
	CHECKED -	REVISED - M.D._01-18
PLOT DATE = 11/6/2025	DATE - 02-83	REVISED - D.S._05-24

SCALE: NONE SHEET 1 OF 1 SHEETS STA. TO STA.

F.A. RTE.	SECTION	COUNTY	TOTAL SHEETS	SHEET NO.
**	2025-1078-FCN	*	22	18
<b>TC-08</b>		CONTRACT NO. 62Y37		

ILLINOIS FED. AID PROJECT \*VARIOUS \*COOK, DUPAGE, KANE, LAKE, MCHENRY, & WILL

MODEL: TC-08 (Sheet)  
FILE NAME: c:\p\work\wv\thanh.vo\illmod\117287\011625-shr-DistSigs.dgn



**NOTES:**

1. SIDE ROAD WITH A SPEED LIMIT OF 40 MPH (60 km/h) OR LESS AS SHOWN ON THE DRAWING AND AS DIRECTED BY THE ENGINEER:
  - a) ONE "ROAD CONSTRUCTION AHEAD" SIGN 36 x 36 (900x900) WITH A FLASHER MOUNTED ON IT APPROXIMATELY 200' (60 m) IN ADVANCE OF THE MAIN ROUTE.
  - b) THE CLOSED PORTION OF THE MAIN ROUTE SHALL BE PROTECTED BY BLOCKING WITH TYPE I, TYPE II OR TYPE III BARRICADES, 1/3 OF THE CROSS SECTION OF THE CLOSED PORTION.
2. SIDE ROAD WITH A SPEED LIMIT GREATER THAN 40 MPH (60 km/h) AS SHOWN ON THE DRAWING AND AS DIRECTED BY THE ENGINEER:
  - a) ONE "ROAD CONSTRUCTION AHEAD" SIGN 48 x 48 (1.2 m x 1.2 m) WITH A FLASHER MOUNTED ON IT APPROXIMATELY 500' (150 m) IN ADVANCE OF THE MAIN ROUTE.
  - b) THE CLOSED PORTION OF THE MAIN ROUTE SHALL BE PROTECTED BY BLOCKING WITH TYPE III BARRICADES, 1/2 OF THE CROSS SECTION OF THE CLOSED PORTION.
3. CONES MAY BE SUBSTITUTED FOR BARRICADES OR DRUMS AT HALF THE SPACING DURING DAY OPERATIONS. CONES SHALL BE A MINIMUM OF 28 (710) IN HEIGHT.
4. WHEN THE SIDE ROAD LIES BETWEEN THE BEGINNING OF THE MAINLINE SIGNING AND THE WORK ZONE, A SINGLE HEADED ARROW (M6-1) SHALL BE USED IN LIEU OF THE DOUBLE HEADED ARROW (M6-4).
5. WHEN WORK IS BEING PERFORMED ON A SIDE ROAD OR DRIVEWAY, FOLLOW THE APPLICABLE STANDARD(S). THE DIRECTIONAL ARROW (M6-1 OR M6-4) SHALL BE COVERED OR REMOVED WHEN NO LONGER CONSISTENT WITH THE TRAFFIC CONTROL SET-UP.
6. ADVANCE WARNING SIGNS ARE TO BE OMITTED ON DRIVEWAYS UNLESS OTHERWISE SPECIFIED IN THE PLANS OR BY THE ENGINEER.
7. THE TRAFFIC CONTROL AND PROTECTION FOR SIDE ROADS, INTERSECTIONS, AND DRIVEWAYS SHALL BE INCLUDED IN THE COST OF SPECIFIED TRAFFIC CONTROL STANDARDS OR ITEMS.

All dimensions are in inches (millimeters) unless otherwise shown.

MODEL: TC-10 (Sheet)  
FILE NAME: c:\p\work\pwr\thanh.vo\illmodr.gov\117287\116925-shr-Dist5\cls.dgn

USER NAME = thanh.vo	DESIGNED - L.H.A.	REVISED - T. RAMMACHER 01-06-00
	DRAWN -	REVISED - A. SCHUETZE 07-01-13
	CHECKED -	REVISED - A. SCHUETZE 09-15-06
PLOT DATE = 11/6/2025	DATE - 06-89	REVISED - D. SENDEKAK 05-03-24

**STATE OF ILLINOIS  
DEPARTMENT OF TRANSPORTATION**

**TRAFFIC CONTROL AND PROTECTION FOR  
SIDE ROADS, INTERSECTIONS, AND DRIVEWAYS**

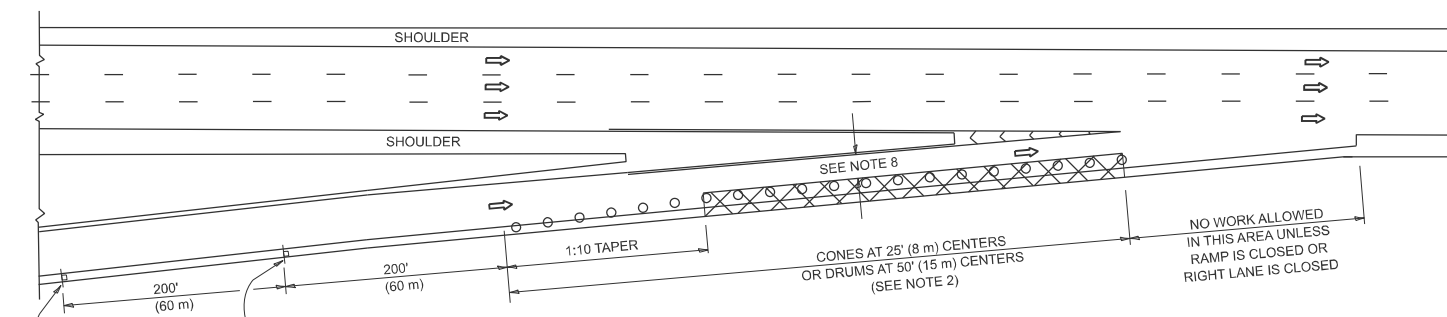
SCALE: SHEET OF SHEETS STA. TO STA.

F.A. RTE.	SECTION	COUNTY	TOTAL SHEETS	SHEET NO.
**	2025-1078-FCN	*	22	19
<b>TC-10</b>			CONTRACT NO. 62Y37	

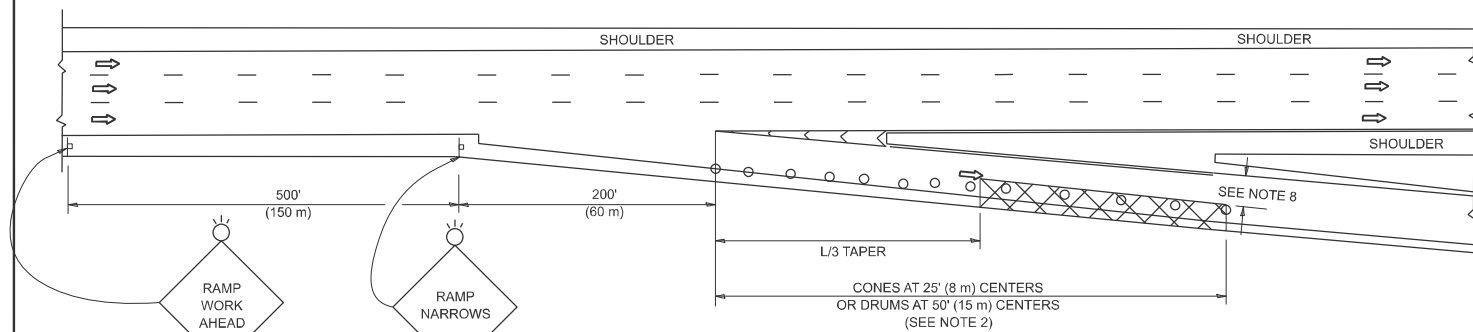
\*\*VARIOUS ILLINOIS FED. AID PROJECT \*COOK, DUPAGE, KANE, LAKE, MCHENRY, & WILL



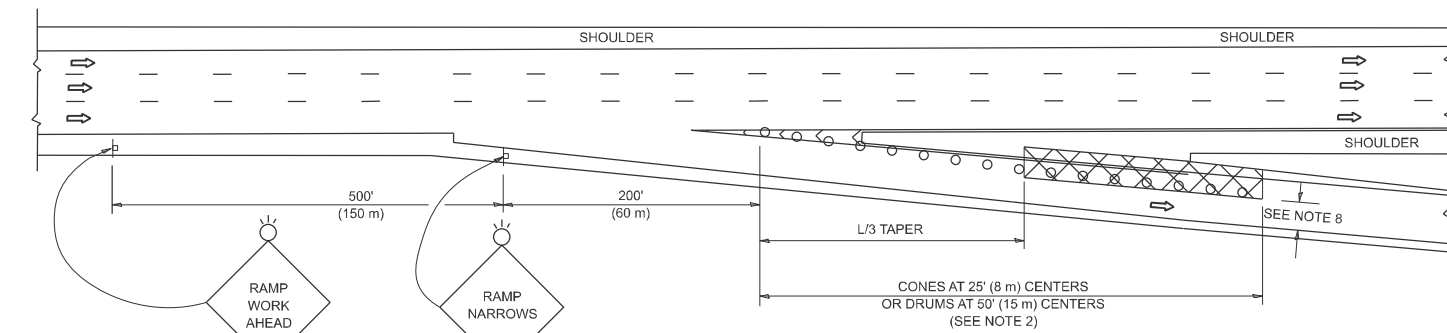
**PARTIAL RAMP CLOSURE DETAILS**



**TYPICAL ENTRANCE RAMP**



**TYPICAL EXIT RAMP**



**TYPICAL EXIT RAMP**

**SYMBOLS**

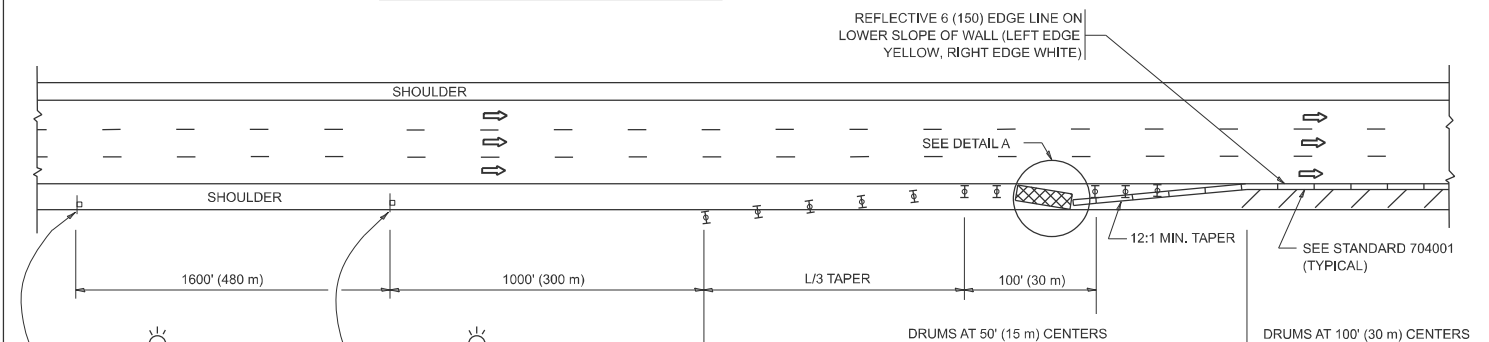
- ACTIVE WORK AREA
- SIGN ON PORTABLE OR PERMANENT SUPPORT
- FLAGGER WITH CONTROL SIGN
- TYPE II BARRICADE OR DRUM
- CONE, DRUM OR BARRICADE
- IMPACT ATTENUATOR OF TYPE AND TEST LEVEL SPECIFIED

**GENERAL NOTES:**

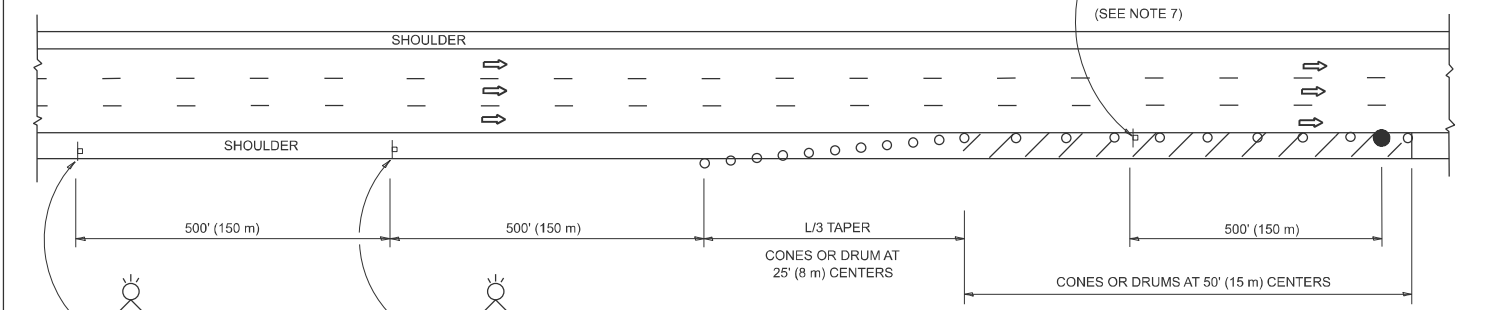
- THE "L" DISTANCE EQUALS:  

<b>SPEED LIMIT</b>	<b>FORMULAS</b>
45 mph (80 km/h) OR GREATER:	METRIC ENGLISH L=0.65(W)(S) L=(W)(S)
W = WIDTH OF OFFSET IN FEET (METERS)	
S = NORMAL POSTED SPEED MPH (KM/H)	
- TYPE II BARRICADES OR DRUMS ARE REQUIRED FOR ALL NIGHTTIME CLOSURES. TYPE II BARRICADES OR DRUMS WITH MONODIRECTIONAL STEADY BURN LIGHTS ARE REQUIRED FOR DELINEATING OBSTACLES, EXCAVATIONS, OR HAZARDS EXCEEDING 100 FT (30m) IN LENGTH AT NIGHT.
- ALL SIGNS SHALL BE POST MOUNTED IF THE CLOSURE TIME EXCEEDS FOUR DAYS.
- FLASHING LIGHTS SHALL BE USED DURING THE HOURS OF DARKNESS AND SHALL BE INSTALLED ABOVE THE FIRST TWO SETS OF SIGNS.

**SHOULDER CLOSURE DETAILS**



**PERMANENT SHOULDER CLOSURE**



**TEMPORARY SHOULDER CLOSURE**

- THIS DETAIL IS USED WHERE:
- VEHICLES, EQUIPMENT, WORKERS OR THEIR ACTIVITIES ENCR OACH IN AN AREA CLOSER THAN 15' (4.5 m) TO THE EDGE OF PAVEMENT FOR A PERIOD IN EXCESS OF 15 MINUTES.



**DETAIL "A"  
IMPACT ATTENUATOR, TEMPORARY  
(SEE NOTE 5)**

- THE IMPACT ATTENUATOR, TEMPORARY IS NOT REQUIRED WHEN THE TEMPORARY CONCRETE BARRIER WALL IS PROTECTED BY OR IS TIED INTO THE EXISTING GUARDRAIL. IF OFFSET IS LESS THAN 5 FEET USE NARROW USE TYPE DEVICE TO MEET NCHRP350/MASH.
- AUTHORIZATION FROM THE DISTRICT'S BUREAU OF TRAFFIC IS REQUIRED FOR ALL FREEWAY CLOSURES.
- THE FLAGGER AND FLAGGER SIGN ARE REQUIRED AT THE ABOVE WORK SITES WHEN:
  - FOUR OR MORE WORK VEHICLES ENTER THE TRAFFIC LANES IN A ONE HOUR PERIOD.
  - THE WORK ACTIVITY REQUIRES FREQUENT ENCR OACHMENT INTO THE LANE OPEN TO TRAFFIC.
 THE FLAGGER SHALL BE STATIONED APPROXIMATELY 100' (30 m) TO 200' (60 m) IN ADVANCE OF THE WORKERS.

- 12' MIN. WIDTH TANGENT SECTION  
16' MIN. WIDTH CURVE SECTION.
- TEMPORARY SHOULDER AND NON-SYSTEM INTERCHANGE PARTIAL CLOSURES ARE ALLOWED WEEKDAYS BETWEEN 9:00 A.M. AND 3:00 P.M. AND BETWEEN 7:00 P.M. AND 5:00 A.M. OR AS APPROVED BY THE EXPRESSWAY TRAFFIC OPERATIONS ENGINEER. PERMANENT SHOULDER AND PARTIAL RAMP CLOSURES WILL ONLY BE PERMITTED IF CALLED FOR IN THE PLANS OR AS APPROVED BY THE EXPRESSWAY OPERATIONS ENGINEER.

ALL DIMENSIONS ARE IN INCHES (MILLIMETERS) UNLESS OTHERWISE SHOWN.

MODEL: TC-17 (Sheet)  
FILE NAME: c:\p\work\vw\thanh.vo\illinois.gov\117287\116925-shr-Dist-Stds.dgn

USER NAME = thanh.vo	DESIGNED -	REVISED - M.D. 06-13
	DRAWN - D.W.S.	REVISED - M.D. 01-18
	CHECKED -	REVISED - M.D. 10-20
PLOT DATE = 11/5/2025	DATE - 11-96	REVISED - D.S. 05-24

**STATE OF ILLINOIS  
DEPARTMENT OF TRANSPORTATION**

**TRAFFIC CONTROL DETAILS FOR FREEWAY  
SHOULDER CLOSURES AND PARTIAL RAMP CLOSURES**

SCALE: NONE SHEET 1 OF 1 SHEETS STA. TO STA.

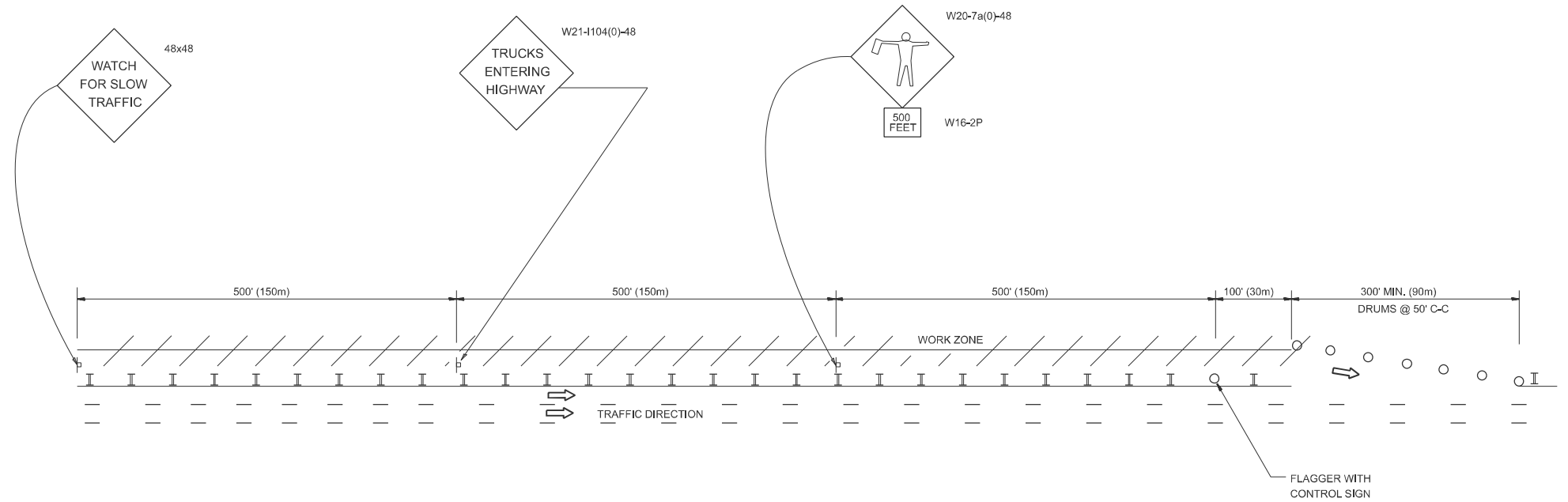
F.A. RTE.	SECTION	COUNTY	TOTAL SHEETS	SHEET NO.
**	2025-1078-FCN	*	22	21
<b>TC-17</b>			CONTRACT NO. 62Y37	

\*\*VARIOUS

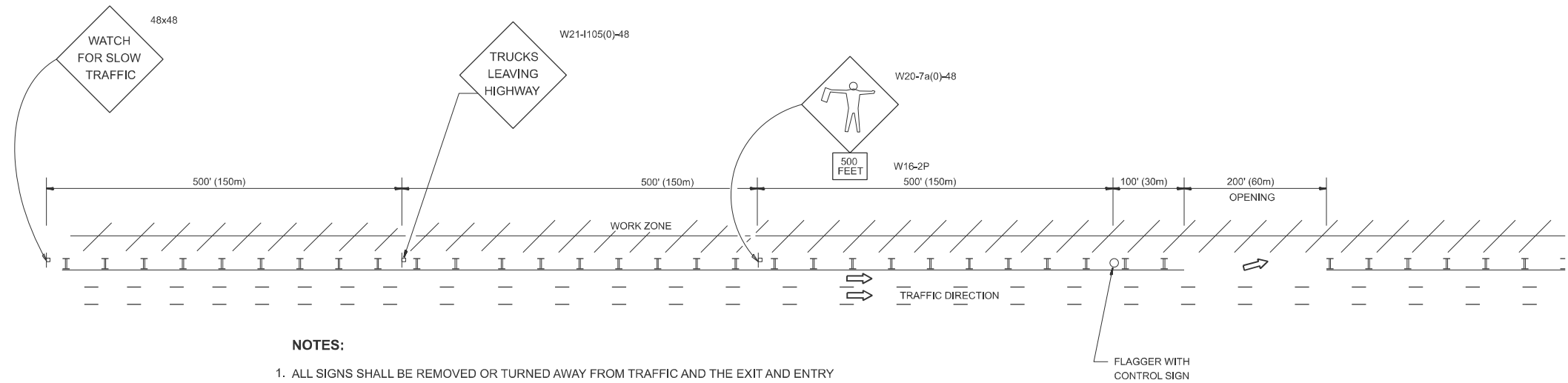
ILLINOIS FED. AID PROJECT  
\*COOK, DUPAGE, KANE, LAKE, MCHENRY, & WILL

SIGNING FOR FLAGGING OPERATIONS AT WORK ZONE OPENINGS

**WORK ZONE EXIT OPENING**



**WORK ZONE ENTRY OPENING**



**NOTES:**

1. ALL SIGNS SHALL BE REMOVED OR TURNED AWAY FROM TRAFFIC AND THE EXIT AND ENTRY OPENINGS SHALL BE CLOSED WHEN THE FLAGGING OPERATION CEASES. NON OPERATING EQUIPMENT SHALL COMPLY WITH ARTICLE 701.11
2. WORK ZONE OPENINGS SHALL BE A MINIMUM OF ONE HALF MILE APART AND A MINIMUM OF ONE QUARTER MILE FROM ALL ENTRANCE AND EXIT RAMPS.
3. EXITING THE WORK ZONE AT ANY PLACE OTHER THAN AT A WORK ZONE EXIT OPENING WILL BE PROHIBITED.
4. ALL VEHICLES SHALL ENTER THE WORK ZONE AT ENTRY OPENINGS, USING THEIR TURN SIGNALS TO WARN MOTORISTS
5. FLAGGERS SHALL NOT STOP TRAFFIC OR DIRECT TRAFFIC INTO AN ADJACENT LANE.

ALL DIMENSIONS ARE IN INCHES (MILLIMETERS) UNLESS OTHERWISE SHOWN

MODEL: TC-18 (Sheet)  
FILE NAME: c:\p\work\pww\thanh.vo\illinois.gov\117287\0116925-shr-Dist\Dist.dgn

USER NAME = thanh.vo	DESIGNED -
	DRAWN -
	CHECKED -
PLOT DATE = 11/6/2025	DATE -

REVISED - J.A.F. 02-06
REVISED - S.P.B. 01-07
REVISED - S.P.B. 12-09
REVISED - M.D.06-13

**STATE OF ILLINOIS  
DEPARTMENT OF TRANSPORTATION**

**FREEWAY / EXPRESSWAY SIGNING FOR FLAGGING OPERATIONS  
AT WORK ZONE OPENINGS ON FREEWAYS / EXPRESSWAYS**

SCALE: NONE SHEET 1 OF 1 SHEETS STA. TO STA.

F.A. RTE.	SECTION	COUNTY	TOTAL SHEETS	SHEET NO.
**	2025-1078-FCN	*	22	22
<b>TC-18</b>			CONTRACT NO. 62Y37	

\*\*VARIOUS

ILLINOIS FED. AID PROJECT  
\*COOK, DUPAGE, KANE, LAKE, MCHENRY, & WILL